

Canon

come

and

see

# Simply advanced

Award winning imageRUNNER ADVANCE  
Office Colour and Black and White range

 **imageRUNNER**  
ADVANCE



# imageRUNNER ADVANCE - working for tomorrow

The workplace is rapidly changing. Flexible start times, working from home, mobile workers who share desks, and employees who cross international boundaries, yet interact as if they were in the same room.

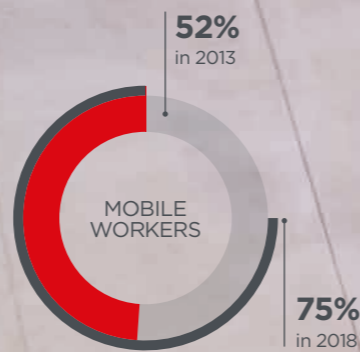
To be successful, businesses must be able to gather and present information quickly, easily share it with those that need it and keep it secure from those that do not. But information management poses an important challenge with multiple documents that co-exist in various printed or digital forms and locations - from employees' desks and office cabinets to cloud servers and mobile devices.

imageRUNNER ADVANCE is a range of multi-functional devices built on an intelligent platform to support and complement every stage of the document lifecycle. From creation to sharing, output to archival, these devices are designed to help you increase productivity and efficiency, meet your security and environmental needs, control costs and optimise your return on investment.

The platform offers a wide range of models and integrated solutions with the proven technology to address the document workflow challenges of evolving work environments - from small workgroups and offices to large departments or print rooms.

## Supporting your business through change

The imageRUNNER ADVANCE portfolio can be easily customised to match the specific requirements of your business, now and in the future, and integrates seamlessly with a range of powerful document capture and output management solutions such as uniFLOW, eCopy, Therefore, IRIS and more.



Mobile workers were estimated at nearly **52%** of the total workforce population in 2013. By 2018, this is forecast to rise to **75%**.

Western Europe Mobile Workforce Forecast Update, 2013-2018, #LM58W

### Cost Management

Identify and address areas for better management of print and document-related costs.

Page 4



### Workflow efficiency

Designed to help save time and resources and increase productivity with efficient workflows and intuitive ease-of-use.

Page 6



### Security

A range of standard and optional security capabilities to help protect sensitive information.

Page 8



Organisational Costs (**33%**), Security (**26%**) & Employee Productivity (**20%**) are top three concerns for organisations today

Western European Hardcopy End-User Study: Print Services Evolution Continues, IDC, #KD57X

### Device and fleet management

Advanced capabilities for efficient fleet management to help ease IT burden and maximize productivity.

Page 9



### Quality and reliability

Outstanding quality and reliable performance to keep environments moving.

Page 10



### Sustainability

Incorporating responsible design and efficient operation to help achieve environmental goals.

Page 11



In the digital universe, the number of gigabytes per IT professional will grow by a factor of 8 between now and 2020, while the number of devices on the Internet of Things grows by a factor of 2.

EMC Digital Universe Study, with data and analysis by IDC, IDC\_1672



# Cost Management

Today's businesses are looking for operational efficiencies and a clear return on their investments. But many are unaware of the true cost of print and information management in their organisation, which can be significant if not managed properly.

The total cost of print includes hidden costs associated with document management and production, optimised output management, IT support and infrastructure and Administration and purchasing. Canon's imageRUNNER ADVANCE portfolio is designed to address these and deliver cost savings to help maximise Return on Investment.

Printing costs can run in the range of **3% - 6%** of revenue.

A CXO's guide to MPS, Photizo Group

## Document management and production

Organisations incur significant costs related to everyday document handling, with inefficiencies in searching for and reusing information, potentially wasting both time and money. The imageRUNNER ADVANCE portfolio can help you reduce hidden costs with fully integrated end-to-end document workflows. This enables quick and effective capture, archiving and sharing of information - reducing your reliance on paper-based manual processes and facilitating efficient collaboration.

## Optimised output management

The imageRUNNER ADVANCE portfolio with integrated solutions gives you the ability to control device access, apply print policies, monitor output and restrict usage by user. This helps to reduce unnecessary printing, encourage cost recovery and save on paper and toner.

Managed Print Services help organisations to optimise their printing environment, manage their printer fleets and save on printing costs. Efficiently managing a printer fleet can reduce printing costs by between **10%** and **30%**. MPS allows for simplified budgeting of output costs by consolidating contracts for hardware, supplies and maintenance, giving businesses a better idea of their spending on print.

Gartner, Hype Cycle for Imaging and Print Services, 2015, 14 July 2015, Tomoko Mitani

## IT support and infrastructure

The IT department is often the first resource for print related issues, which can be a burden. The imageRUNNER ADVANCE portfolio and integrated solutions are designed to help reduce print-related IT costs. Firstly, the devices can be completely configured with your required settings prior to on-site installation. Consistent and intuitive user operation across all devices, as well as common driver and video assistance, simplifies user education and helps reduce escalations.

Support for industry standards such as PCL and PostScript, enables direct integration with your IT systems, while powerful fleet management tools provide remote and centralised control and updating of devices and entire fleets, including the ability to distribute settings, print policies and restrictions efficiently.

## Administration and purchasing

The imageRUNNER ADVANCE portfolio can help address your hidden administrative and management costs, by enabling services such as automatic meter collection and remote consumables management. In addition, Canon's renowned build quality and reliability, combined with remote diagnostics and assistance, can help reduce costs by minimising downtime as well as administrative interventions.

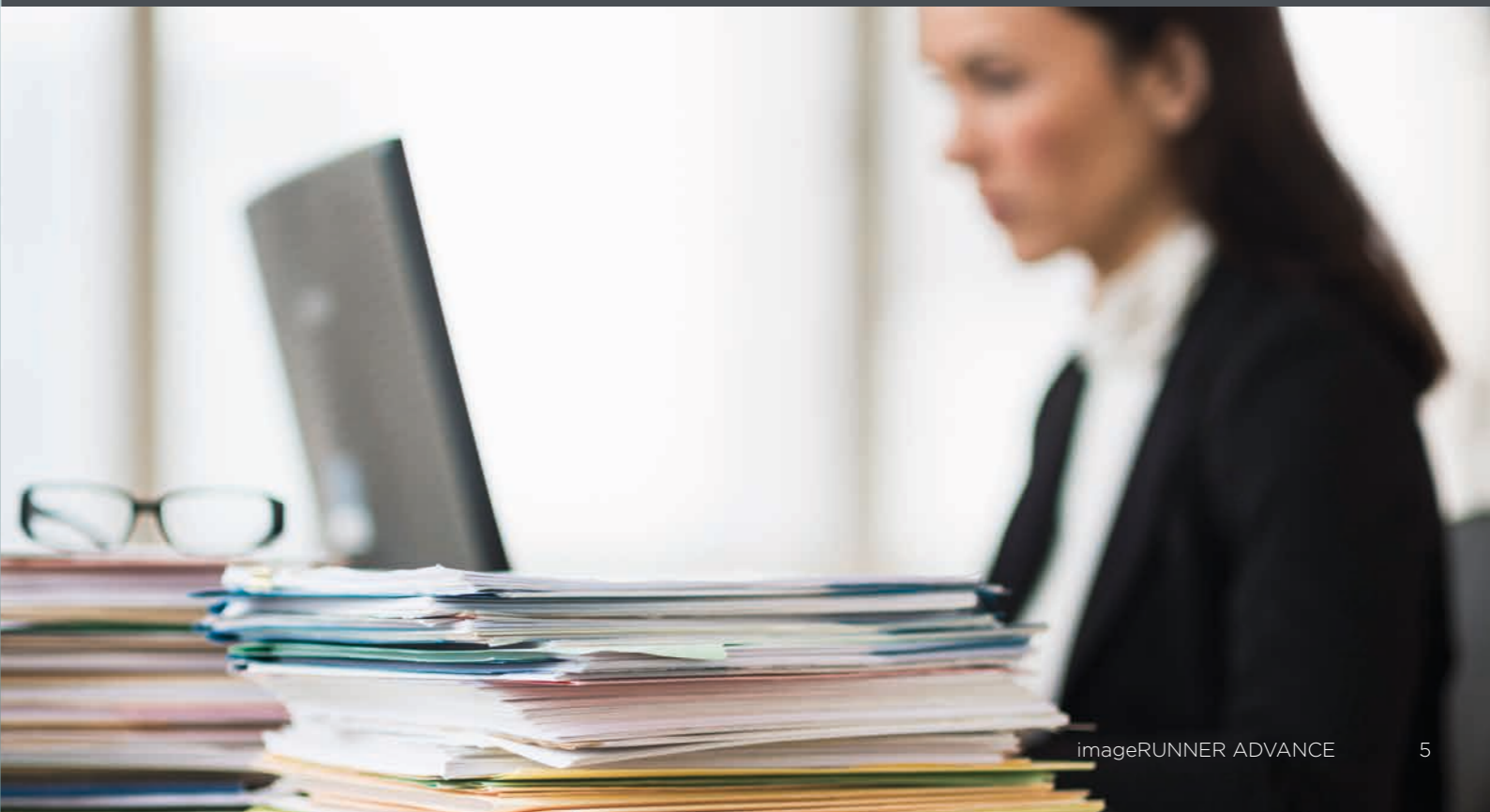
# 3,700

is average number of IT support hours a hardcopy fleet for a firm with 750 employees requires per year.

A CXO's guide to MPS, Photizo Group



**23%** of Help Desk calls are print related and IT spend **15%** of their time on printing-related issues in the average organisation. IDC





# Workflow efficiency

Saving time and resources is a big concern at most companies. With this in mind the imageRUNNER ADVANCE portfolio has been designed to help you increase productivity and grow your business with efficient streamlined workflows.



## Ease of use



A large, responsive and intuitive user interface with colour touch screen makes carrying out tasks quick and effortless. New operations, like flick and pinch features, improve usability and are common with many smartphones\*. A built-in tutorial and support videos assist with basic maintenance to maximise uptime. Plus users will be comfortable with any device in the portfolio thanks to a common platform and operating principles.

## Personalised Experience



The imageRUNNER ADVANCE device is designed to be shared, but also enables a unique, personal experience across a fleet. When an authentication service is activated, individual users can customise their workspace using advanced personalisation\*\* functions. With My Display, users can personalise the user interface including the initial screen after log-in, language display or accessibility settings. My Functions create efficiencies by giving users easy access to unique information that can assist in their workflows, like their personal address books, while My Settings enable personal default settings for Copy, Send, Fax, and Store.

## Support for Mobile Workflows



Scalable support for flexible working practices can help increase efficiency by allowing workers to securely capture or print documents on the move and quickly link their mobile devices directly into business workflows. The imageRUNNER ADVANCE portfolio works with almost any smart device, with support for common applications such as Google Print and Mopria\*, and can connect directly to certain cloud based services.

## Streamlined document capture



Powerful scanning capabilities enable streamlined document capture and digitisation. Simultaneous 2-sided scanning\* delivers fast results and you can easily send documents to a multitude of destinations. Standard support is included for scanning and converting documents to Searchable PDF, Microsoft® Word\* and Microsoft® PowerPoint. For process and workflow optimisation, imageRUNNER ADVANCE devices integrate seamlessly with a range of powerful Canon and third party software thanks to the embedded MEAP and MEAP Web application platforms.

## Built-in intelligence



A range of intelligent features help to streamline document workflows and maximise productivity. Motion sensor technology\* wakes the device from sleep mode to reduce perceived waiting time, while smart media handling capabilities such as skip blank pages\* and multi-sheet feed detection\* help ensure efficient scanning.

## End-to-end document creation



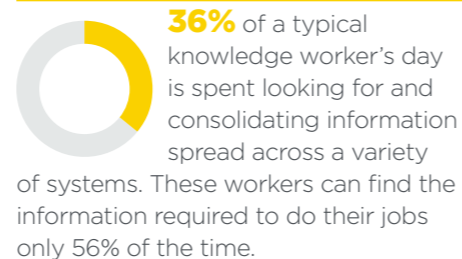
The imageRUNNER ADVANCE portfolio has flexible finishing options\*\*\*, such as stapling, document insertion, hole-punching and booklet printing as well as C and Z folding. This coupled with Canon's iW Desktop publishing software provides simple creation and production of high-quality professional-looking documents, in-house.

The proportion of organisations that have deployed mobile printing

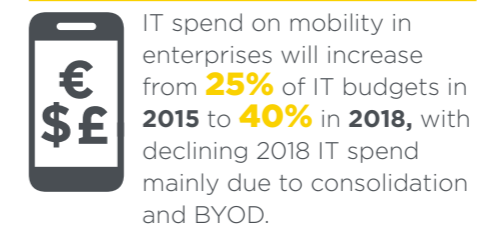


has risen from just **5%** to **14%**, with **35%** planning to implement mobile printing within the next 12 months.

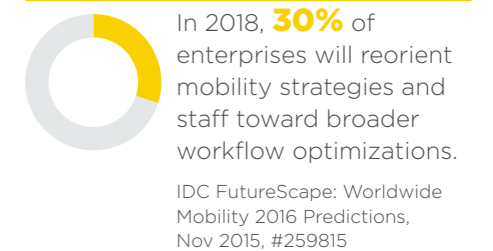
The mobile print enterprise, are businesses ready for mobile printing? Quocirca



Whitepaper - Bridging the Information Worker Productivity Gap, Unlocking the Hidden Value of Information, IDC Multi-client Study, 2014, David Schubmehl and Dan Vesset



IDC FutureScape: Worldwide Mobility 2016 Predictions, Nov 2015, #259815



\* Available on select imageRUNNER ADVANCE models  
 \*\* Certain Advanced Personalisation features are only available on select imageRUNNER ADVANCE models  
 \*\*\* Finishing options vary by model



# Security

By 2020, more than

# 1.5 billion people

will be affected by data breaches.

IDC FutureScape: Worldwide IT Security Products and Services 2016 Predictions, Nov 2015, #259836



# 24%

of breaches are paper based

Beazley plc, 2014



# Device and fleet management

As organizations realize that a well-managed printer fleet could reduce office print spending by **up to 30%**, more organizations are taking measures to optimize their printer fleets, adopting device consolidation and print management software either by themselves or with the assistance of an MPS provider.

Gartner, Forecast Overview: Print Hardware, Software and Services, Worldwide, 2015, 27 July 2015

With confidential data regularly moving between a user's desktop, mobile device and MFP, it is important to take measures to help protect your print environment. The imageRUNNER ADVANCE platform offers a range of security capabilities to help ensure the confidentiality, accessibility and availability of your information.

Canon's multi-layered security solutions help safeguard sensitive information stored on the device and during transmission:



## Device Security

You can control who has access to each device via a log-in service such as Universal Login Manager. With this application, the device can be configured so that sensitive prints can only be retrieved once a user has logged in using picture log-in, PIN code or card access - helping to prevent confidential documents from being left in the output tray. Usage can also be tracked by individual or department.



## Data and network security

- uniFLOW SAM Express Server allows you to monitor and control access to any device as well as enable additional data protection.
- HDD Erase, a standard feature, removes latent images after each task.
- HDD Format removes and overwrites all data on the hard drive at the end of life.
- HDD Data Encryption helps protect information even after hard drive removal, and is now FIPS 140-2 validated on select models.
- A security chip with tamper-resistant hardware helps protect passwords and encryption keys.
- IPsec provides security for data as it traverses the network.



## Document security

Canon takes protecting your organisation's confidential information seriously, building in many controls to help ensure that your information does not become compromised. To help prevent unauthorised distribution of sensitive information, various device functions can be disabled for individual users, while visual and audible Original Reminder notifications\* alert you if sensitive information from scanned originals is left at the device.



Whether you have one device or a large fleet, the integration, administration and management of your print infrastructure can be complex and time-consuming. Canon offers advanced capabilities for efficient device and fleet management to help ease the burden on your IT teams and maximise productivity.

## Efficient Installation and Smart User Support

Devices can be configured to your specifications for quick and easy deployment into your environment, and can integrate seamlessly with your enterprise applications and legacy systems to help streamline business processes. Users can easily handle basic maintenance tasks, such as replacing consumables or clearing paper jams, with intuitive built-in guidance that improves the user experience and helps reduce unnecessary calls to your IT department. IT can efficiently resolve user issues by replicating and controlling the device user interface from a remote location.

## Advanced administration and management tools

Using imageWARE Management Console you can enjoy a centralised point of control across your entire fleet - including international boundaries. You can check device status and consumables, turn off devices remotely and capture meter readings, as well as manage address books and print drivers. Firmware, device configurations, applications and settings can be easily updated for the whole or part of the fleet and security policies can be efficiently implemented.

## Efficient monitoring and diagnostics

Remote consumables management and device monitoring capabilities allow for seamless replenishment of your toner stocks and automated collection of meter readings. Remote diagnostics, event handling and parts lifetime management also enable pre-emptive maintenance and rapid fixes for maximum uptime.



**80%** of companies consider document security as a top priority

White paper: Barometre GED



# Quality and reliability

The imageRUNNER ADVANCE portfolio has been designed with the needs of your business as the primary focus. Quality and reliability are at the forefront of the research and development process and the entire user experience has been taken into account to bring to market a solution that not only supports busy working environments, but also lets them thrive.

## Outstanding quality

Whether you're printing a key sales proposal or a simple email, you can expect outstanding quality output – thanks to advanced real time calibration and V<sup>2</sup> Colour technology\*. The V<sup>2</sup> Colour technology maximises the capability of the device and toner to deliver impressive results with a vivid and vibrant appearance. Advanced grayscale capabilities also ensure superb monochrome prints. With the imageRUNNER ADVANCE portfolio, you can expect consistently high quality results across a wide range of media sizes and weights.

## Award winning technology

Canon technology and expertise can help businesses achieve their objectives by delivering operational efficiencies – improving the way they manage information and simplifying their document processes. The imageRUNNER ADVANCE portfolio has earned numerous awards and recognition from leading industry analysts for its innovation, design and environmental features.

## Accessibility

The imageRUNNER ADVANCE devices are suitable for disabled users thanks to a number of support features. Content on the display can be enlarged for the visually impaired, users can remotely access the device from their computers to view control panels and there are also voice guidance and voice operation options.



\* Available on select imageRUNNER ADVANCE models



# Sustainability

Canon's commitment to the environment is an integral part of our product design, manufacturing and corporate culture. The progressive thinking behind the imageRUNNER ADVANCE platform incorporates innovative, sustainable solutions that help keep your business operating efficiently, while also helping to reduce your environmental footprint.



While price and quality came out on top, **54%** of small businesses said that operating in an environmentally supportive and efficient way was also important for them

Canon EMEA Sustainability Report 2014 - ICM - Canon Research

## Energy efficiency

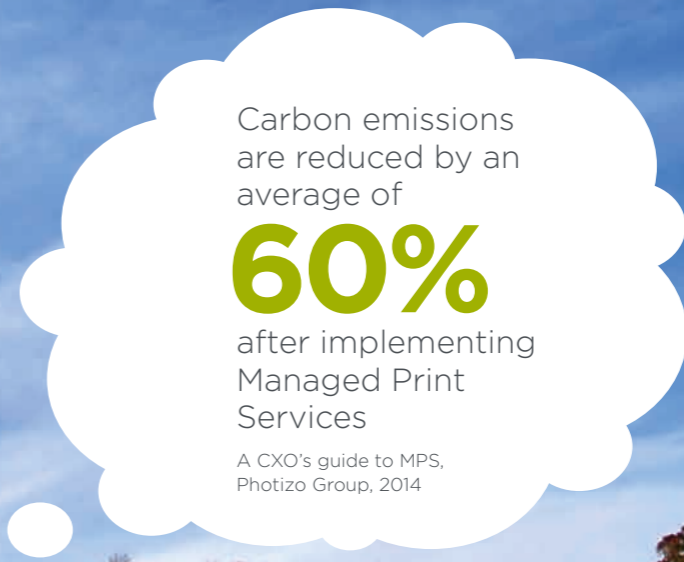
From the inside out, the imageRUNNER ADVANCE devices are designed for high energy efficiency and optimised performance. The combination of fusing technologies and low-melting-point toner helps lower overall energy consumption by minimizing power requirements and reducing energy use during warm-up and while in stand-by mode. The imageRUNNER ADVANCE devices are ENERGY STAR® qualified and offer class-leading Typical Electricity Consumption (TEC) ratings.

## Responsible way to work

You can distribute digital documents and preview files to make changes prior to printing to help reduce the use of paper and consumables. Print drivers are defaulted to 2-sided printing to help reduce waste. And with secure printing, documents are sent to a device but not printed until a password is entered, further contributing towards a reduction in paper waste.

## Sustainable design

The imageRUNNER ADVANCE portfolio is designed with strong consideration for sustainability. Each device incorporates recycled materials and bioplastics, made from plant-derived resources. Through its Life Cycle Assessment (LCA) System, Canon has also lowered carbon dioxide emissions at each stage of the product life cycle, including manufacturing, energy use and logistics. Carbon dioxide emissions are reduced through the use of more sustainable materials as well as a design and manufacturing process that focuses on minimising environmental impacts. Devices have also been designed with noise reduction in mind for quieter working environments.











Carbon emissions are reduced by an average of **60%** after implementing Managed Print Services

A CXO's guide to MPS, Photizo Group, 2014

# Specifications: imageRUNNER ADVANCE

Integrated, cost effective, secure and efficient the imageRUNNER ADVANCE platform can help support the successful evolution of your business and also help maximise your return on investment. It offers a wide range of models to meet the needs of every type of work environment – from small workgroups and offices to large departments or print rooms – each one designed to help you streamline business processes, manage your costs and get you working for tomorrow.

				
	<b>COLOUR PORTFOLIO</b>	<b>IR ADV C3300 series</b>	<b>IR ADV C5200 series</b>	<b>IR ADV C7200 series</b>
<b>Product Configuration &amp; Core Functions</b>	Print / Copy / Scan / Send and Optional Fax* (*On C351iF fax is standard) printer-only version also available	Print / Copy / Scan / Send and Optional Fax	Print / Copy / Scan / Send and Optional Fax	Print / Copy / Scan / Send and Optional Fax
<b>Output Speed (BW/Colour) (A4 only single sided)</b>	C250i: 25 ppm C350i/C351iF/C350P: 35 ppm	C3320: 20 ppm C3320i: 20 ppm C3325i: 25 ppm C3330i: 30 ppm	C5235i: 35/30 ppm C5240i: 40/35 ppm C5250i/i: 50/45 ppm C5250/i: 50/45 ppm	C7260i: 60/55 ppm C7270i: 70/65 ppm C7280i: 80/70 ppm
<b>User Interface (Type and size)</b>	17.8 cm touch colour LCD	17.8 cm touch colour LCD	21.3 cm touch colour LCD	21.3 cm touch colour LCD Optional 26.4 cm upright touch colour LCD
<b>Scan Speed(A4, 300 dpi, colour, single-sided)</b>	C250i: 25 ipm C350i/C351i: 35 ipm	55 ipm	RADF: 51 ipm IPDS: 75 ipm	120 ipm
<b>Maximum Paper capacity (with Options) (A4, 80 gsm)</b>	2,300 sheets	2,300 sheets	5,000 sheets	C7260i/C7270i: 6,900 sheets C7280i: 9,300 sheets
<b>Paper size</b>	Up to A4	Up to A3 and SRA3	Up to A3 and SRA3	Up to A3 and SRA3
<b>Paper weights</b>	Cassettes: 60 to 163 gsm; Multi-Purpose tray: 60 to 220 gsm; Duplex: 60 to 163 gsm	Cassettes: 52 to 220 gsm; Multi-purpose tray: 52 to 256 gsm; Duplex: 52 to 220 gsm	Cassettes: 52 to 220 gsm; Multi-purpose tray: 52 to 256 gsm; Duplex: 52 to 220 gsm	Cassettes: 52 to 220 gsm; Multi-purpose tray: 52 to 300 gsm; Duplex: 52 to 220 gsm
<b>Finishing options</b>	Staple Finisher (corner stapling)	Inner Finisher (corner/double/eco stapling + on demand stapling), Staple Finisher (corner/double stapling), Booklet Finisher (corner/double/booklet stapling)	Inner finisher (corner/double stapling), Staple Finisher (corner/double stapling), Booklet Finisher (corner/double/booklet stapling), Hole Punchers (2/4/2-4 punch)	Staple Finisher (corner/double stapling), Booklet Finisher (corner/ double/booklet stapling), Hole Punchers (2/4/2-4 punch), Paper folding, Trimmer, Insertion Unit
				
	<b>MONO PORTFOLIO</b>	<b>IR ADV 4200 series</b>	<b>IR ADV 6500 series</b>	<b>IR ADV 8500 series</b>
<b>Product Configuration &amp; Core Functions</b>	Print/ Copy/ Scan/ Send and Optional Fax	Print / Copy / Scan / Send and Optional Fax printer-only version also available	Print, Copy, Scan, Send and Optional Fax printer-only version also available	Print, Copy, Scan, Send and Optional Fax
<b>Output Speed (BW/Colour) (A4 only single sided)</b>	iR-ADV 400i: 40 ppm iR-ADV 500i: 50 ppm	iR-ADV 4225i: 25 ppm iR-ADV 4235i: 35 ppm iR-ADV 4245i: 45 ppm iR-ADV 4251i: 51 ppm	iR-ADV 6555i/6555iP: 55 ppm iR-ADV 6565i: 65 ppm iR-ADV 6575i: 75 ppm	iR-ADV 8585: 85 ppm iR-ADV 8595: 95 ppm iR-ADV 8505: 105 ppm
<b>User Interface (Type and size)</b>	17.8 cm colour LCD touch screen	21.3 cm colour LCD touch screen	25.7 cm colour LCD touch screen	26.4 cm colour LCD touch screen
<b>Scan Speed(A4, 300 dpi, colour, single-sided)</b>	50 ipm	51 ipm	85 ipm	85 ipm
<b>Maximum Paper capacity (with Options) (A4, 80 gsm)</b>	2,300 sheets	4,980 sheets	7,700 sheets	7,700 sheets
<b>Paper size</b>	Up to A4	Up to A3	Up to A3	Up to A3 and SRA3
<b>Paper weights</b>	Cassette: 64 to 105 gsm; Multi-purpose tray: 64 to 128 gsm; Duplex: 64 to 105 gsm	Cassette: 60 to 128 gsm; Multi-purpose tray: 52 to 220 gsm; Duplex: 60 to 105 gsm	Cassettes: 52 to 220 gsm; Multi-purpose tray: 52 to 256 gsm; Duplex: 52 to 220 gsm	Cassettes: 52 to 220 gsm; Multi-purpose tray: 52 to 256 gsm; Duplex: 52 to 220 gsm
<b>Finishing options</b>	Staple Finisher (corner stapling)	Inner Finisher (corner/double stapling), Staple Finisher (corner/double stapling), Booklet Finisher (corner/double/booklet stapling), Hole Punchers (2/4/2-4 punch)	Staple Finisher (corner/double stapling), Booklet Finisher (corner/ double/booklet stapling), Eco Staple, On-demand stapling, Hole Punchers (2/4/2-4 punch), Paper folding, Insertion Unit	Staple Finisher (corner/double stapling), Booklet Finisher (corner/ double/booklet stapling), Eco Staple, On-demand stapling, Hole Punchers (2/4/2-4 punch), Professional Puncher, Paper folding, Trimmer, Insertion Unit

Canon Inc.  
Canon.com

Canon Europe  
canon-europe.com

English Edition 0147W156  
© Canon Europa N.V., 2016

Canon Europe Ltd  
3 The Square,  
Stockley Park,  
Uxbridge,  
Middlesex  
UB11 1ET UK

