

No fuss, fast scanning at an affordable price.

Entry Level

Amazingly slim, yet loaded with features. You can expect impressive results from this 2400 x 4800 optical dpi resolution, 48-bit colour scanner. Scan an image, or create an email attachment, PDF file or colour copy<sup>1</sup> in just one step. With the CanoScan LIDE110 great results and easy operation come together in a stylish and compact design.



## Key Features

### Advanced Features Make Scanning Easy

- One-touch buttons automatically create an image file, PDF file, a colour copy<sup>1</sup>, or an email attachment in one easy step.
- Dedicated PDF button makes the creation of multiple page PDF files simple.
- Scan multiple photos at once using Multi-Scan mode. Single-pass multi-scan automatically aligns, scans and names each image as a separate file<sup>2</sup>
- Vertical scanning with included clip-on stand
- Single USB lead transfers data and provides power keeping your desk clutter free.

### User Friendly Software

- Solutions Menu EX and MP Navigator EX offers user-friendly scanning for a range of different applications such as copy (print)<sup>6</sup>, scan, email, OCR, and PDF save.
- Use the software to correct backlight, remove scratches and dust and also remove graininess
- Supports Mac and PC for quick and easy scanning



### Quality Scans<sup>3</sup>

High quality scanning up to 2400 x 4800 optical dpi high resolution and 48-bit superior gradation



### Fast Data Transfer<sup>4</sup>

USB 2.0 Hi-Speed interface for fast data transfer



### Advanced Design

Advanced Z-Lid and scanning in the upright position



### Auto Scan Mode

No hassles, no worry – just quick and easy scanning with auto scan mode



### Easy Operation

4 one touch buttons Scan / Copy / PDF / E-mail for easy operation

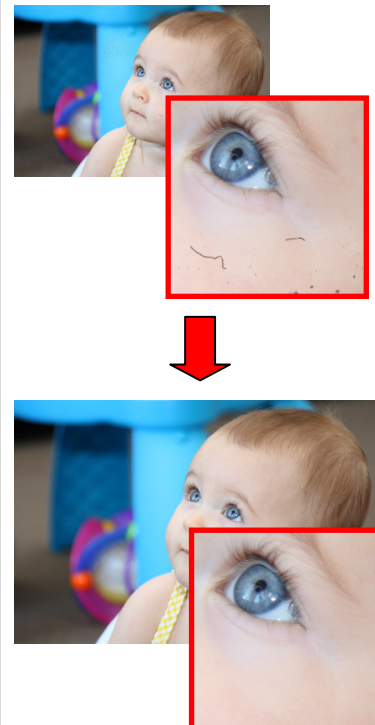


### PC and Mac

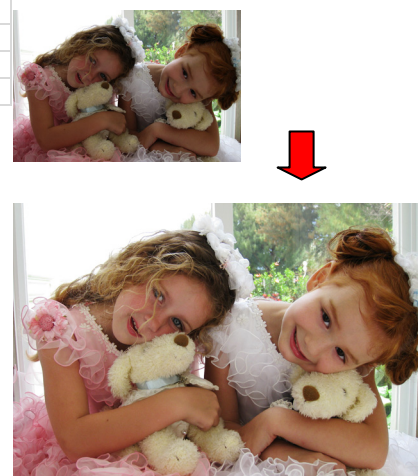
Use scanner on either PC or Mac for stunning results

CanoScan LIDE110 Technical Specifications	
<b>General</b>	
<b>Scanner Type</b>	Desktop Colour Flatbed Scanner
<b>Scanning Elements</b>	CIS (Contact Image Sensor)
<b>Light Source</b>	RGB three-colour LED
<b>Resolution</b>	
<b>Optical Resolution<sup>1</sup></b>	2400 x 4800 dpi
<b>Selectable Resolution</b>	25 - 19200 dpi
<b>Scanning Gradation</b>	
<b>Colour</b>	48-bit input/48 or 24-bit output
<b>Greyscale</b>	16-bit input/8-bit output
<b>Maximum Size</b>	
<b>Document/Photo</b>	A4/LTR, 216 x 297 mm
<b>Scan Speed</b>	
<b>Preview Speed<sup>2</sup></b>	Approx. 14 sec.
<b>Scanning Speed</b>	
<b>Colour<sup>5</sup></b>	8.4 msec/line (1200 dpi) 16.7 msec/line (2400 dpi)
<b>B &amp; W</b>	2.9 msec/line (1200 dpi) 5.6 msec/line (2400 dpi)
<b>User Interface</b>	
<b>One-Touch Buttons</b>	4 Buttons - Scan, Copy, PDF File, E-mail
<b>Multi-Scan Mode (Photo)</b>	Yes
<b>PDF Save Function</b>	Yes
<b>OCR Text Recognition</b>	Yes
<b>Included Software</b>	Solution Menu EX; MP Navigator EX, Adobe RGB Profile for Windows
<b>Included as Standard</b>	LIDE110, USB Cable, Scanner Stand, Setup CD ROM
<b>Other</b>	
<b>Interface<sup>4</sup></b>	USB 2.0 Hi-Speed
<b>Operating Environment</b>	Windows: XP SP2 or later / Windows Vista / Windows 7 Mac: OS X 10.4.11 or later (USB 2.0)
<b>Power Supply</b>	Via USB port (additional power cord not required)
<b>Power Consumption</b>	2.5W (Max), 1.4W (stand-by mode)
<b>Dimensions</b>	250 x 370 x 40mm
<b>Weight</b>	Approx. 1.6kg

### Dust & Scratch Reduction



### Fading Correction



### Disclaimers

- Optical resolution is a measure of maximum hardware sampling resolution, based on ISO 14473 standard. Correct procedures outlined in the manual for photo positioning should be followed when using Multi-Scan mode.
- Preprocessing time is not included.
- USB 2.0 Hi-speed performance requires Vista, Windows XP with Service Pack 1 or Windows 2000 with Service Pack 4 with pre-installed USB 2.0 High-speed port. Drivers are provided for Windows operating systems only. Other operating systems are not supported.
- Excluding processing time. Highest available USB speed quoted. Print speed may vary with the content of the document and the processing speed of the host computer. Time from when print data is received.
- The fastest speed in Hi-Speed USB on Windows PC. Transfer time to computer is not included.
- A separate printer is required. Sold separately

Subject to change without notice