

Fast, high quality scanning for those with no time to waste.

Entry Level

Amazingly slim, yet loaded with features. You can expect impressive results from this 4800 x 4800 optical dpi resolution, 48-bit colour scanner. Scan an image, or create an email attachment, PDF file or colour copy<sup>1</sup> in just one step. With the CanoScan LIDE210 great results and easy operation come together in a stylish and compact design.



## Key Features

### Advanced Features Make Scanning Easy

- One-touch buttons automatically create an image file, PDF file, a colour copy<sup>2</sup>, or an email attachment in one easy step.
- Dedicated PDF button makes the creation of multiple page PDF files simple.
- Scan multiple photos at once using Multi-Scan mode. Single-pass multi-scan automatically aligns, scans and names each image as a separate file
- Vertical scanning with included clip-on stand
- Single USB lead transfers data and provides power keeping your desk clutter free.

### User Friendly Software

- Solutions Menu EX and MP Navigator EX offers user-friendly scanning for a range of different applications such as copy (print)<sup>2</sup> scan, email, OCR, and PDF save.
- Use the software to correct backlight, remove scratches and dust and also remove graininess
- Supports Mac and PC for quick and easy scanning



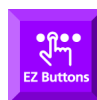
### Quality Scans<sup>3</sup>

High quality scanning up to 4800 x 4800 optical dpi high resolution and 48-bit superior gradation



### Fast Data Transfer<sup>4</sup>

USB 2.0 Hi-Speed interface for fast data transfer



### Easy Operation

5 one touch buttons Scan / Copy / PDF / E-mail for easy operation



### Advanced Design

Advanced Z-Lid and scanning in the upright position



### PC and Mac Support

Use the scanner on either PC or Mac for stunning results

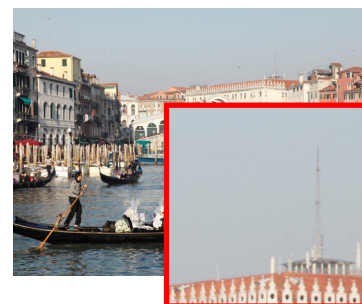
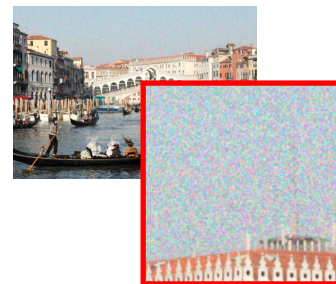
CanoScan LIDE210 Technical Specifications	
<b>General</b>	
Scanner Type	Desktop Colour Flatbed Scanner
Scanning Elements	CIS (Contact Image Sensor)
Light Source	RGB three-colour LED
<b>Resolution</b>	
Optical Resolution <sup>1</sup>	4800 x 4800 dpi
Selectable Resolution	25 - 19200 dpi
<b>Scanning Gradation</b>	
Colour	48-bit input/48 or 24-bit output
Greyscale	16-bit input/8-bit output
<b>Maximum Size</b>	
Document/Photo	A4/LTR, 216 x 297 mm
<b>Scan Speed</b>	
Preview Speed <sup>5</sup>	Approx. 9 sec.
<b>Scanning Speed<sup>8</sup></b>	
Colour	8.7 msec/line (1200 dpi) 17.0 msec/line (2400 dpi)
Greyscale	2.9 msec/line (1200 dpi) 5.6 msec/line (2400 dpi)
B & W	2.9 msec/line (1200 dpi) 5.6 msec/line (2400 dpi)
<b>User Interface</b>	
One-Touch Buttons	4 Buttons - Scan, Copy, PDF File, E-mail
Multi-Scan Mode (Photo)	Yes
PDF Save Function	Yes
OCR Text Recognition	Yes
Included Software	CD ROM includes HTML User's Guide, CanoScan Setup Utility, MP Navigator EX
Standard Equipment	USB Cable, Scanner Stand, Software Kit
<b>Other</b>	
Interface	USB 2.0 Hi-Speed Windows: XP SP2 or later / Windows Vista / Windows 7 Mac: OS X 10.4.11 or later (USB 2.0)
Operating Environment	Via USB port (additional power cord not required)
Power Supply	2.5W (Max), 1.4W (stand-by mode)
Power Consumption	250 x 365 x 39mm
Dimensions	Approx. 1.6kg
Weight	

### Disclaimers

- Optical resolution is a measure of maximum hardware sampling resolution, based on ISO 14473 standard. Correct procedures outlined in the manual for photo positioning should be followed when using Multi-Scan mode.
- A separate printer is required for copy function. Sold separately.
- The fastest speed in Hi-Speed USB on Windows PC. Transfer time to computer is not included. Excluding processing time. Highest available USB speed quoted. Print speed may vary with the content of the document and the processing speed of the host computer. Time from when print data is received.
- Calibration processing time excluded
- Preprocessing time is not included.

Subject to change without notice

### Grain Correction



### Upright Scanning

