



*BUILT TOUGH
FOR SUPER-FAST
RELIABLE SCANNING*

ImageFORMULA DR-M160

A reliable document scanner for all of your high-speed scanning needs. The DR-M160 offers superb accuracy with a precise feeding mechanism capable of handling even the thinnest of document sheets.

canon.com.au/business

Canon

*achieve more.
beyond technology.*

SCAN A VARIETY OF DOCUMENT TYPES WITH *EFFICIENT* PRECISION

The double feed detection and separation retry functions automatically correct feed errors to maximise efficiency. Capable of producing high-quality 24-bit images in full colour at 60 ppm via simple front panel operations, the compact and durable DR-M160 is everything you need for your intensive document digitizing operations.

Compact and Heavy-Duty

Durable, solid body

Equipped with a sturdy body and durable moving parts, including a paper guide that easily adjusts to fit your document, the DR-M160 is built tough to get the job done as smoothly and effortlessly as possible. It's also compact and sized to fit on just about any desktop or counter.

Reliable handling of a variety of documents

The slanted paper path design ensures smooth handling for everything from thick or thin documents to multi-sheet forms, checks, embossed cards, and even A3/11" x 17" folio. The large feed rollers and floating retard rollers provide highly reliable document delivery.

High-capacity ADF

The heavy-duty feed tray can hold up to 60 sheets.

Fast, High-Quality Scanning

Rapid scanning

An improved CMOS contact image sensor unit enables the DR-M160's fast 60 ppm / 120 ipm scanning. Colour documents can be scanned just as quickly as in B&W, and double-sided documents are scanned in one pass. For fast and easy batch scanning, the automatic document feeder holds up to 60 sheets at one time.

Reliable document feeding

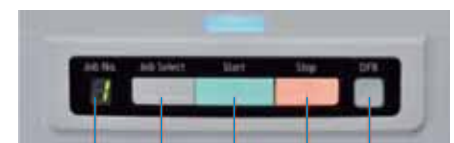
Canon's reliable page separation mechanism provides smooth feeding of a wide variety of document sizes and weights. Features such as Ultrasonic Double Feed Detection and Rapid Recovery further ensure dependability by making sure each and every page of a batch is scanned.

Make sure that documents are fed straight with the adjustable document guides.



Operating panel

Start and stop scanning and perform other operations away from your computer with the operating panel.



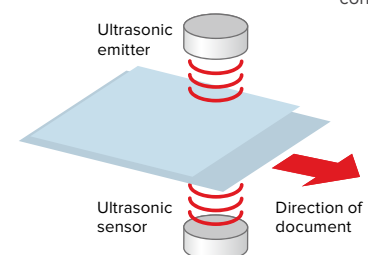
Selects from registered jobs.

Stops scanning.

Displays the currently selected job number. Error codes also appear here if paper jams or other errors occur.

Starts scanning the document that is currently loaded.

Lights when a double feed is detected. Press this to save the scanned image of the double-fed document and continue scanning.



	Simplex		Duplex	
	B/W, Grayscale	Colour	B/W, Grayscale	Colour
200dpi	60	60	120	120
300dpi	60	40	120	80

Support documents with the extendable feed support. Extend the support according to the length of the document sheets.



Open the document eject tray before you start scanning. Two extendable supports are available for various document lengths. Raise the stopper to keep ejected documents organised.

Image Processing

Automatic Colour Detection

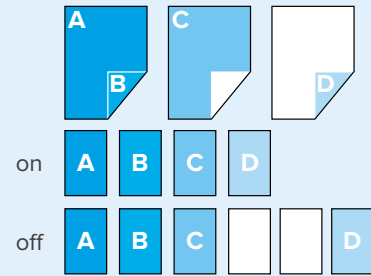
This function automatically determines which documents of a mixed batch should be saved in colour, grayscale or B&W, so it's no longer necessary to separate B&W and colour documents prior to scanning.

Auto Page Size Detection

Save the time and trouble of sorting batches by paper size. This function automatically checks the size of each fed document end and ensures properly sized images for each page.

Skip Blank Page

Useful for scanning batches that include single- and double-sided documents, this function automatically removes unnecessary blank pages from the image file.

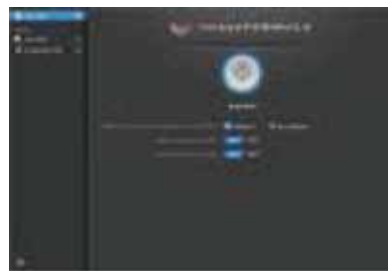


Bundled Software

Capture OnTouch

CaptureOnTouch

The dedicated software supplied with DR-Series scanners, CaptureOnTouch, has been redesigned with a newly streamlined interface for even smoother scanning operations.



Capture Perfect

CapturePerfect

CapturePerfect is Canon's own scanning application that makes it easy to get great scans straight out of the box. Through a user-friendly interface, the software gives you a wide selection of file-saving formats and file distribution options, such as searchable and encrypted PDF, Scan to Mail, Scan to Presentation, and more.



eCopy PDF Pro Office

eCopy PDF Pro Office instantly creates 100% industry-standard, universally viewable PDFs files, and converts static PDF documents into editable files and useful information. eCopy PDF Pro Office allows you to attain the flexibility of a universal document format for higher productivity and seamless information exchange.



Kofax VirtualReScan Basic

Leading image processing software, Kofax VRS Basic, improves readability of multiple-size documents with varying degrees of quality. Automatically straighten skewed pages without character degradation, optimise a document's brightness/contrast levels, and eliminate background noise and speckling.

Specifications

Type	Desktop sheet-fed scanner
Scanning document size	Plain Paper: Width: 54 mm to 216 mm (2" to 8.5") Length: 50.8 mm to 356 mm (2.12" to 14") (You can scan documents up to 3,000 mm (118.1") long by setting the scanner to the Long Document mode.) Business Card: 50 mm x 85 mm (1.97" x 3.35") or larger Card: 53.9 mm x 85.5 mm (2.12" x 3.37") (ISO standard)
Scanning document thickness	Plain Paper: Page separation: 27 to 209 g/m ² (7 to 56 lb bond) 0.04 mm to 0.25 mm (0.00157" to 0.00984") Bypass: 27 to 255 g/m ² (7 to 68 lb bond) 0.04 mm to 0.3 mm (0.00157" to 0.0118") Business Card: 380 g/m ² (80 lb bond) 0.15 mm (0.0059") or smaller Card: 1.4 mm (0.55") or smaller Horizontal feeding only Embossed cards can be scanned.
Document feeding method	Automatic
Scanning sensor	Contact image sensor
Light source	LED
Scanning side	Simplex/duplex
Scanning modes	Black and White, Error Diffusion, 256-level Grayscale, Advanced Text Enhancement, Advanced Text Enhancement II, 24-bit Colour
Scanning resolution	150 x 150dpi/200 x 200dpi/300 x 300dpi/400 x 400dpi/600 x 600dpi
Scanning speed ¹⁾	Grayscale: Simplex: 200dpi 60 pages/min. 300dpi 60 pages/min. Duplex: 200dpi 120 images/min. 300dpi 120 pages/min. 24-bit colour: Simplex: 200dpi 60 pages/min. 300dpi 40 pages/min. Duplex: 200dpi 120 images/min. 300dpi 80 pages/min.
Interface	Hi-Speed USB 2.0

Other functions	Folio scanning, double feed detection release, separation retry
External dimensions (W x D x H)	With the feed tray removed and the document eject tray closed 280 mm (11.02") x 172 mm (6.77") x 178 mm (7.01") With the feed tray attached and the document eject tray open 280 mm (11.02") x 606 mm (23.86") x 366.4 mm (14.43")
Weight (without AC adapter)	Approximately 3.2 kg (7.05 lb)
Power supply (using AC adapter)	DC24V 1.0A
Power consumption	Scanning: maximum 27 W In the sleep mode: maximum 1.8 W With power switch OFF: maximum 0.5 W
Noise	Not more than 67.5 dB
Operating environment	Temperature: 10°C to 32.5°C (50°F to 90.5°F) Humidity: 20% to 80% RH

¹⁾ Actual scanning speed may vary depending on your system configuration and PC. Specifications are subject to change without notice.

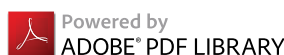
Microsoft, Windows, Windows Vista, PowerPoint and SharePoint are either registered trademarks or trademarks of Microsoft Corporation in the United States and/or other countries.

Adobe, the Adobe logo, Acrobat, the Adobe PDF logo, and Adobe Reader are either registered trademarks or trademarks of Adobe Systems Incorporated in the United States and/or other countries.

Kofax, the Kofax logo, and other Kofax marks are registered trademarks or trademarks of Kofax, Inc. in the United States and other countries, and used under authority from Kofax.

ENERGY STAR and the ENERGY STAR mark are registered U.S. trademarks.

Other company names and product names appearing in this brochure are the registered trademarks and/or trademarks of their respective owners.



canon.com.au/business

Follow us on Twitter @CanonBusinessAU

1800 444 199

2327-v1-02/14



*achieve more.
beyond technology.*