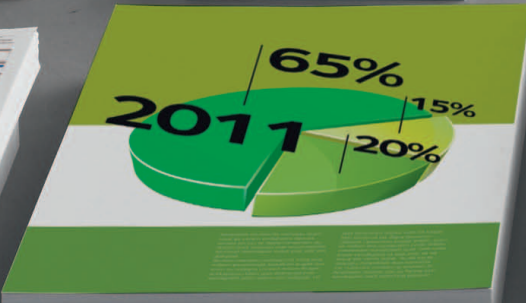


Intuitive production
to advance your
business prospects.

imageRUNNER ADVANCE
C9070S PRO and C9060S PRO

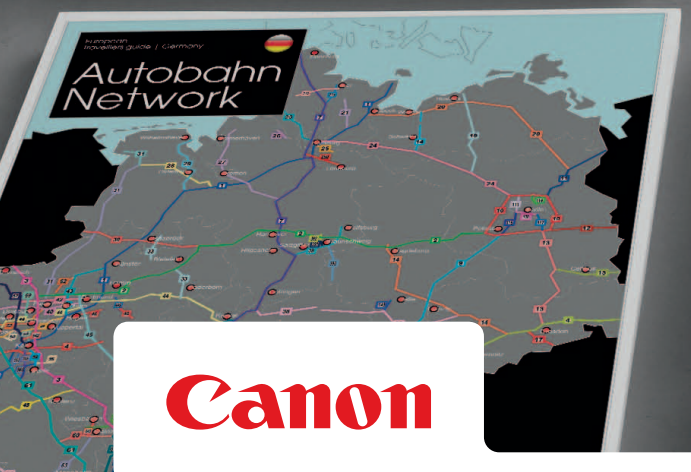
you can



Contents

Executive Summary	1
Observations and Recommendations	4
A strategy to deliver our vision	7
Maintaining our dividend	8
Strength of our business	9
Managing our risk	10
Delivering for our customers	11
Building the brand	12
Pride in our people	13
Committed to our vision	14
What's next?	15
Our strategy	16
Economic outlook	17
Appendix 1 - Audit Framework	18
Appendix 2 - Staff Interviewed	19
Statement of Responsibility	20

Business cards for Juliette, Daniel, Peter, and Audrey.



Dear Justine,
Welcome to our guide to courses at South East University 2011 / 2012. I am delighted to introduce our new range of courses, as we begin a historic new period for South East University. Whatever course may appeal to you, we promise to give you access to the best resources and support possible to achieve your success. I hope you are inspired by the courses in this guide and hope you will join us to reap the benefits of this exciting time in our history.

A brand new campus, over 400 courses for every need made for you
Justine

South East University
Welcome to your future



The intuitive production route to customer satisfaction and return on investment

Combining Canon's leading print expertise with intelligent Océ PRISMA[®]sync operation management, the imageRUNNER ADVANCE C9000S PRO series delivers new workflow efficiency and business potential to printroom environments. It's colour print production to suit the way you work, with impressive results that help you grow your business, delight customers and maximise your investment with ease.

 **imageRUNNER**
ADVANCE



Intuitive efficiency that maximises your resources

The two models in the series, the imageRUNNER ADVANCE C9070S PRO and imageRUNNER ADVANCE C9060S PRO, integrate Canon's colour imaging technology and Océ's PRISMAsync operation management into a single print system that simplifies and streamlines your production process at every stage. Staff can be deployed according to their skills and focus on allocated tasks that keep your print devices busy whilst keeping customers more than happy with the service. Media synchronisation ensures printing on the right media with the right settings to help eliminate waste, and process adjustments increase machine uptime enabling you to do more with less.

Everything a printroom service should be

In house print services do not just deliver print and copy output to their organisations. At Canon and Océ we know it is quality and value that matter. With the imageRUNNER ADVANCE C9070S PRO and C9060S PRO, you have the winning combination of outstanding colour productivity and exceptional workflow management that enables you to deliver on time, on budget and in style. Add in the extensive paper capacity, flexible media handling and advanced finishing capabilities and you have all the tools you need to extend your services and take the business further.

Adding a new dimension to workflow and usability

In a busy printroom, getting the best from your resources is critical to success. It's a difficult job but adding PRISMAsync workflow innovation to Canon's proven digital print leadership makes it much easier. With a single intuitive user interface controlling the whole system, jobs can be managed and monitored every step of the way until final output. Key tasks such as job preparation and submission can be separated from print production to increase device utilisation. Additional features such as advanced media management throughout the system, intuitive colour settings and automation of regular jobs ensure the required job performance and minimise errors. It's integrated printroom production that puts you in control.





Make every day more productive

In a printroom environment, success is measured by your ability to get jobs in and out quickly, consistently and accurately. With their impressive print and processing speeds, large input/output capacity and advanced job scheduling features, the imageRUNNER ADVANCE C9070S PRO and C9060S PRO ensure swift and dependable turnaround day after day, week after week. They're designed with your way of working in mind.

High speed print and fast processing power

Advanced print and processing rates keep you up to speed with your demanding production agenda. Full colour pages, presentations, reports, contracts, flyers, brochures, newsletters and other documents can be output at an engine speed of up to 70 pages per minute - with no need to keep refilling stocks thanks to the impressive 9,300 (A4) sheet capacity. Job processing is extra fast too, due to the dedicated Graphics Processor Unit (GPU) in the PRISMAsync controller which allows much faster processing of colour values than many other RIPs. With PRISMAsync's ability to multitask and simultaneously spool, rip, print and clean up, you can rely on maximum productivity and processing speed.

Advanced job planning and scheduling

PRISMAsync operation management offers an industry-unique job scheduler which shows every queued job and an overview of work scheduled up to 8 hours ahead. The scheduler accurately predicts production time based on media format, weight, and special attributes such as tabs and required finishing, so everyone knows what is going through and coming up, making planning much easier for full printer utilisation.

Impressive continuous performance

To maximise printer uptime, an operator attention light displays the printer status even from a distance. The light changes colour to signal upcoming operator interventions, such as media or toner refill, in plenty of time to prevent a halt in production - ensuring your device runs at full capacity.

Productivity through automation

A lot of time and effort can be saved by automating frequently occurring jobs. PRISMAsync operation management gives you the ability to save job settings for media, finishing options and colour management as printer driver templates for future reuse. So after the first time, jobs are twice as easy and take half the time for preparation. Hot folders and virtual printers also give you more options for automation.

Intelligent job scheduler

Scheduler accurately predicts production time based on:

Set and run length

Standard media attributes such as format and weight

Special media attributes such as tabs

Necessary process adjustments

Getting people, machines and processes organised to work seamlessly together is the key to a successful printroom. By integrating your Canon print device and Océ PRISMAsync operation management into a complete system with one point of control, we've instantly redefined workflow at all stages of the print production process. It's a system designed with high capacity production in mind. All your staff and resources can be focused and utilized effectively, from prepress preparation and printer operation to media selection, colour management and output control.

Workflow that works for you

Intuitive PRISMAsync user interface for shorter learning curves

The imageRUNNER ADVANCE C9070S PRO and C9060S PRO are controlled through a single, intuitive user interface with 15" full colour touch screen. It guides operators through the print production process and helps them visualise the machine with all its parts, as well as required actions. With such simplicity, learning to operate the device is easy, and you can benefit from flexible staff planning and savings.

Logical task separation that's simple to manage

PRISMAsync supports the separation of prepress tasks such as job preparation, media selection and colour management from print production. Printer operators can focus on keeping the machines running while prepress colleagues prepare and submit the jobs in detail, for getting the best results at each stage. Even if the same person performs prepress tasks and operates the printer, clear allocation of functionality at the respective workflow steps enhances efficiency and overall productivity.

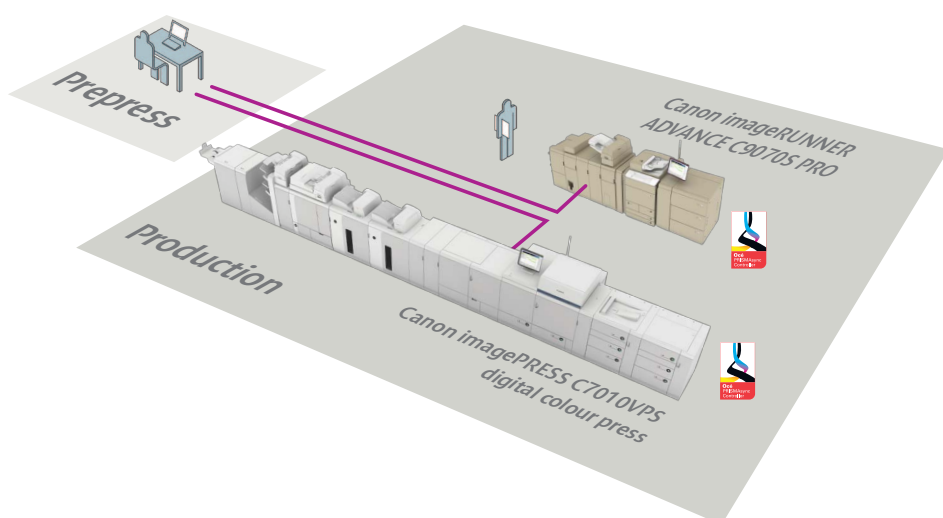
Sophisticated media selection and synchronisation

Ensuring to print on the right media can often be a challenge, especially with multiple operators using the same machine, filling and changing media as needed. The imageRUNNER ADVANCE C9070S PRO and C9060S PRO make this straightforward and easy thanks to a synchronised media catalogue which is used by the engine, controller and printer driver. Users submitting jobs and operators running printers all work with the same catalogue, entirely specific to your printroom and maintained by your key operator. So rather than defining paper tray to print from, the user chooses the desired media from the catalogue and the printer automatically selects the correct tray to print from, or simply asks the operator to load the correct media. As a result, errors and misprints are reduced and you can save valuable paper resources, time and money.

Flexible workload organisation

With the job scheduler and operator attention light, it's easy for printer operators to see what's coming in, what's going through and what's coming up.

In this way, you can always keep priorities current, meet schedules and objectives. Managers can manage more effectively, prepress experts and print operators can focus on their tasks and machines can run continuously, performing at full capacity. It's the new benchmark for flexible printroom organisation.





Versatile print production to suit your business needs

Select from a range of options that can enhance your light production capabilities

1

PRISMAsync colour controller and operations management



- Full engine/controller integration with one single point of control at user interface
- Intuitive, user interface design
- High performance colour server with state of the art colour processing using dedicated GPU and Adobe ACE colour management
- Stream functionality (spool-while-RIP-while-print-while-clean-up) for maximum productivity
- Optional job scheduler and operator attention light

2

Main unit with duplex colour image reader



Choose from two alternative models:

- The **imageRUNNER ADVANCE C9070S PRO** prints at speeds up to 70 pages per minute depending on media type.
- The **imageRUNNER ADVANCE C9060S PRO** prints at speeds up to 60 pages per minute depending on media type.

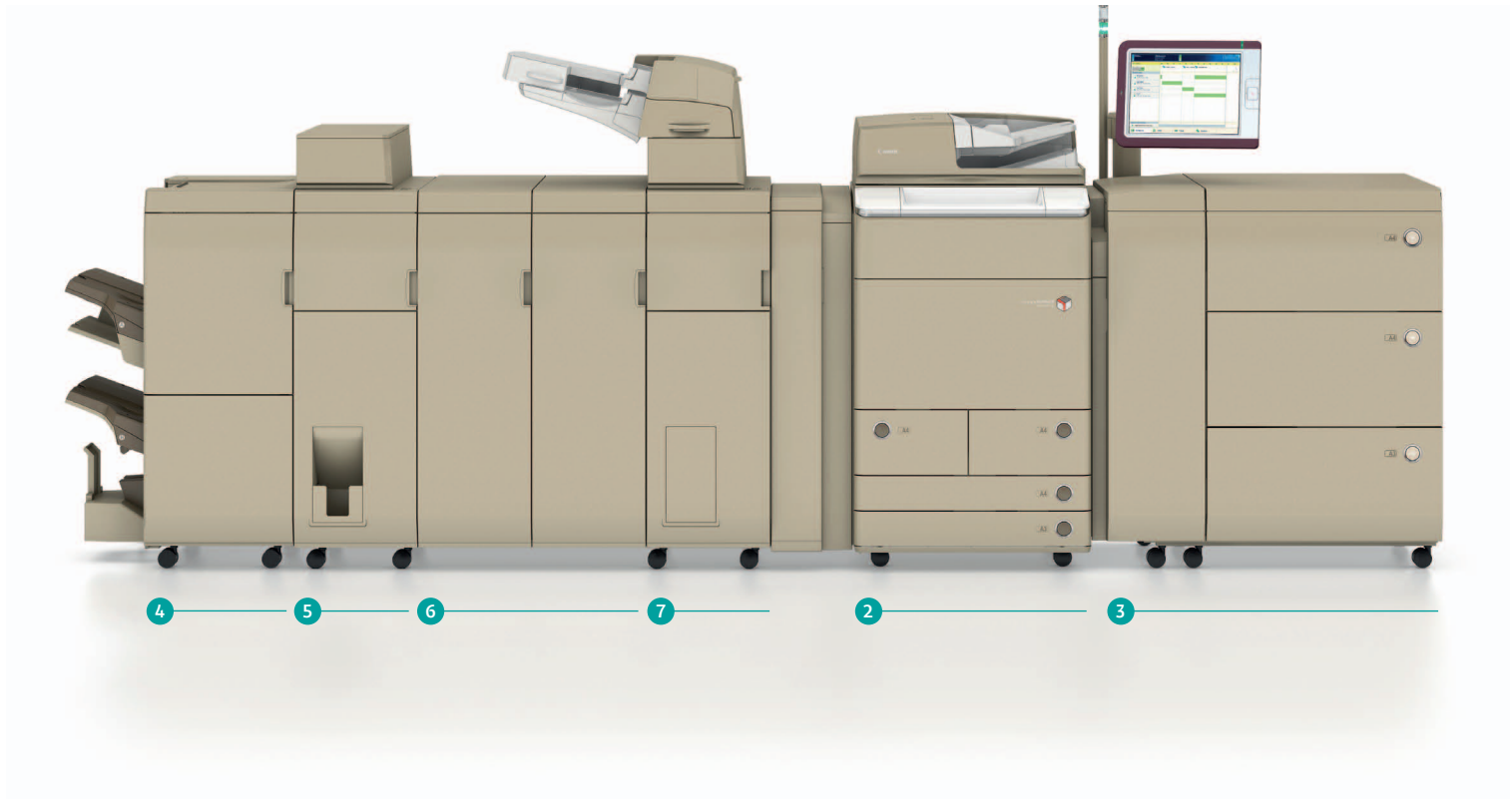
3

Multi-drawer paper deck



The multi-drawer paper deck provides three additional paper drawers with combined capacity of 6,000 sheets. Each 2,000 sheet drawer can be loaded with a different media type for greater flexibility. It supports air assisted and roller pick up paper feeding, which reduces paper friction between the sheets and together with double feed detection enables reliable pick up and feeding of even heavier stocks.

You can also choose from two smaller paper deck options, each enhancing the standard capacity of the main unit by 3,500 sheets (A4, 80 gsm).



4

Finisher

Configure your imageRUNNER ADVANCE C9070S PRO and C9060S PRO with one of two finishers:

Staple finisher

The finisher has an output capacity of up to 4,250 sheets and offers collate, group, offset and staple finishing modes. Up to 100 sheets can be stapled (corner and double stapling options).

Booklet finisher

The booklet finisher supports all the functions of the staple finisher, but with an additional saddle stitch capability that enables you to produce booklets of up to 80 pages.

Optional finishing options for the staple and booklet finisher:

Punch unit

Attach the punch unit to one of the finishers to enable 2- and 4-hole punching.

Booklet trimmer

The trimmer allows a common front edge to be created on thicker booklets produced with the booklet finisher.



5

Paper folding unit

Add the paper folding unit to create professional looking documents with its extensive folding capabilities. The folding unit supports Z-fold, Half fold, C-fold, Accordion Z-fold and Double Parallel Fold.



6

Professional puncher (with integration unit)

The professional punch unit gives you a variety of advanced in-line punching possibilities. Plastic comb-, twin loop-, colour coil-, pro click, velo- and ring binding can be configured with 12 user replaceable dies.



7

Document insertion unit

The document inserter enables heavy and pre-printed media from a different source to be added to jobs as covers or inserts for an added professional touch.

Flexible finishing that helps you grow business

Why settle for satisfying customers with a standard range of print options when you can delight them with so much more? While taking care of day to day jobs with ease, the imageRUNNER ADVANCE C9070S PRO and C9060S PRO give you the media and finishing flexibility to widen your product portfolio and add new applications and services to match and surpass your clients' requirements.

Extensive media options

The imageRUNNER ADVANCE C9060S PRO and C9070S PRO support a whole range of media sizes up to larger than SRA3 and weights from 52 gsm up to 300 gsm, across a variety of paper types, including coated media, envelopes, transparencies and tab papers.



Professional Punching



Tab Printing



Saddle Stitching and Trimming

More finishing choice from the start

In-line finishing options from punching and multiple folding patterns to booklet making and trimming enable you to offer exceptional choice to customers, in a compact and space saving configuration. And the modular design means that your device can develop and grow with your business.



Stapling and Hole Punching



Inserting



Collation



Inner-C Fold



Accordion Z-fold



Z-Fold



Centre Fold

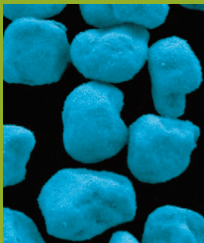


Double parallel Fold

FINISHING OPTIONS

Quality you can rely on

For a printroom to be successful, every single job has to be right first time, every time. That's why the Canon imageRUNNER ADVANCE C9070S PRO and C9060S PRO, with integrated PRISMAsync operation management, are designed for the outstanding and consistent performance that printrooms and their customers demand.



pQ toner

Setting the tone with pQ toner

The imageRUNNER ADVANCE C9070S PRO and C9060S PRO produce clean and sharp images at true 1,200 x 1,200 dpi resolution. Excellence is achieved through Canon's oil-free pQ toner, specially developed to achieve superior digital colour imaging through the latest technologies and manufacturing processes. The toner uses a resin to improve energy-saving fusing and gloss performance. The result is a vivid, smooth finish with the micro-dispersed pigment technology expanding the colour reproduction area to achieve faithful colour reproduction.

Advanced colour calibration

Using Canon's ARCDAT (Automatic and Reciprocal Colour Density Adjustment) technology, the imageRUNNER ADVANCE C9070S PRO and C9060S PRO can calibrate colour in real time, adjusting toner density to ensure reliable and consistent imaging while keeping your light production schedule up to speed.

Colour management enabling professional quality output

Using the powerful but intuitive colour management capabilities in the imageRUNNER ADVANCE C9070S PRO and C9060S PRO systems, anyone in the printroom can produce outstanding colour output, even without a colour expert on hand. PRISMAsync gives you professional colour management at every level, from preset colour templates to more advanced functionalities.

Intelligent media handling throughout the entire workflow further supports reliability of output quality. Media with similar colour behaviour is grouped in media families, automatically linking them to the appropriate colour output profiles to ensure great quality.

Accurate document preparation

With the optional Océ PRISMAprepare prepress application built on the 'what you see is what you get' principle, you can enhance document preparation and job submission for immediate results, even with more complex documents. Océ PRISMAprepare covers composition, image, layout, colour, media and production preparation based on industry standard PDF workflow – providing a full review of changes being made to the document during page programming. In this way, you know what to expect from the finished product, ensuring the right input enters the system, for the right output.



 **imageRUNNER**
ADVANCE



Canon Inc.
canon.com

Canon Europe
canon-europe.com

English Edition 0157W331
© Canon Europa N.V., 2011

Canon (UK) Ltd
Woodhatch, Reigate
Surrey RH2 8BF
Telephone no 01737 220000
Facsimile 01737 220022
www.canon.co.uk

Canon Ireland
Arena Road, Sandyford
Industrial Estate
Dublin 18, Ireland
Telephone No: 01 2052400
Facsimile No: 01 2958141
www.canon.ie

Canon