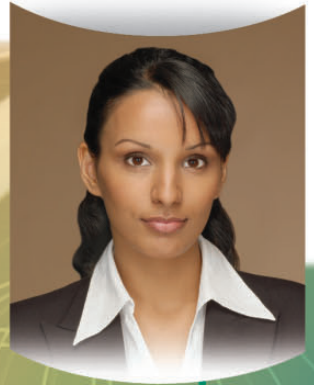


Canon



CORPORATE SOLUTIONS



**Color
imageRUNNER®
C1022 SERIES**

CORPORATE SOLUTIONS

INTRODUCING THE COLOR imageRUNNER C1022 SERIES

Exceptional Productivity and Quality Within Proximity

With the fast pace of business today, high-quality color output needs to be close at hand. Until now, executives, front-office operations, and small workgroups had two choices: settle for a mix of different devices or use a more advanced multifunction printer that required extra space. Canon believes that superior color and reliability should be inherent in every business device, along with full functionality in a space-saving design. Introducing the new Color imageRUNNER C1022 and C1022i models. Finally, your business can achieve greater productivity and competitiveness with a single compact multifunction solution designed specifically for the way you work.

The Canon Color imageRUNNER C1022 Series models deliver exceptional output at speeds of up to 22 pages per minute (letter) in monochrome and brilliant color yet are small enough to be placed on a desktop or in a small space. Additionally, the easy-to-use productivity-boosting features and capabilities such as standard network printing, duplex color scanning, and

available color document distribution functions help make these devices true partners in the success of your business. And, beyond the capabilities of most other all-in-one or stand-alone peripherals, the Color imageRUNNER C1022 Series includes support for portable memory media and advanced electronic document formats for paperless workflows as well as one of the most vibrant display panels available today.

The Canon Color imageRUNNER C1022 Series is offered in two models based upon the needs of your environment. The “Base” model is designed as an affordable multifunction device for offices that don’t require electronic document distribution or fax capabilities but want the flexibility to add these optional functions as needed. The “i” model provides a comprehensive, out-of-the box solution for businesses that want to utilize advanced document distribution technology or consolidate stand-alone fax devices.

MODEL	Color imageRUNNER C1022	Color imageRUNNER C1022i
Copy	Standard	
Print	Standard: UFR II LT Optional: PCL	Standard: UFR II LT, PCL
Scan	Standard: Color Network ScanGear	
Send	Optional	Standard
Fax	Optional	Standard
Scan-to-USB	Standard	
Direct Print*	Standard	
User Operation Panel	Color 3.5" TFT LCD with Scroll Wheel	

* File formats include TIFF and JPEG.

ADVANCED FEATURES AND PERFORMANCE FOR SMALL OFFICES AND WORKGROUPS

RUN your business workflows better, faster, and more reliably.

Powerful Architecture

- Robust imageCHIP Lite controller designed for fast multifunction performance
- Remote UI device management



Advanced Productivity

- Standard duplex printing with UFR II LT technology
- Color document distribution capabilities
- Several advanced features in a single, compact solution
- Less wait with fast warm-up and first-copy-out times

Brilliant Output Quality

- Ultra-crisp black-and-white and accurate color and gradients
- Oil-free S toners

Environmentally-Conscious

- ENERGY STAR® qualified
- Uses 1W of energy or less in Sleep mode
- Quick output times with Color RAPID Fusing technology
- Copy and print multiple pages on a single sheet
- Canon Cartridge Recycling Program

Speed and Efficiency

- Up to 22 pages per minute (letter) in color and monochrome
- Standard 50-sheet duplexing automatic document feeder
- Accurate color scanning at up to 20 impressions per minute (letter)



Usability

- Intuitive Control Panel with tilt
 - Easy-to-read 3.5" TFT LCD
 - Scroll Wheel for simple navigation and entry
 - USB memory media and flash memory support
 - Illustrated on-screen guides for setup and user help
 - Programmable buttons for frequent tasks
- User-Friendly Operation
 - Electronic user manuals with interactive search function
 - Easy-to-replace all-in-one toner and drum cartridges



Robust Paper Handling

- Up to 850-sheet paper capacity
 - 100-sheet Bypass Tray
 - Up to 65 lb. Cover weights
 - Up to legal media sizes



Note: Device shown with optional Cassette Feeding Unit-AB1.

PRODUCTIVITY FEATURES

COMPACT SIZE AND FLEXIBLE PLACEMENT

The Color imageRUNNER C1022 Series is compact and versatile, and easily fits on a desktop or in a centralized area using a cassette or cabinet for walk-up convenience. Regardless of the placement, usability will never be hindered because of the high contrast color control panel that can be tilted to a comfortable viewing angle.

Tilt Control Panel



NETWORK PRINTING WITH EXCEPTIONAL CLARITY

Standard UFR II LT print technology turns your Canon Color imageRUNNER C1022 Series into a network-enabled printer that's accessed through powerful yet easy-to-use drivers on desktop computers. General office environments will benefit from this Canon proprietary technology, which is optimized to facilitate high-speed printing by utilizing the user's desktop computer for image data processing.

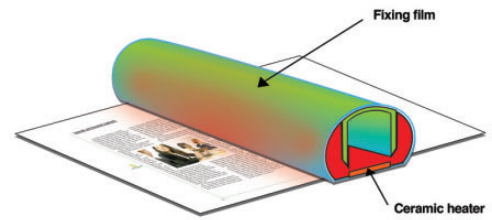
The devices produce high-quality color output and accurate gradients through Canon's oil-free S Toners, which have been specifically engineered for uniformity in size and shape with a gloss-free look for superior results. And unlike other printers, the Color imageRUNNER C1022 Series features Pure Black technology to produce black text and lines of the page with greater clarity using the black toner instead of mixing CMYK colors.

** Color imageRUNNER C1022 consumes as low as 1W of power in deep Sleep mode.*

QUICKER WARM-UP TIME FOR FASTER OUTPUT

Tired of waiting for your output on other printers? The Color imageRUNNER C1022 Series includes Canon's Color RAPID Fusing System for shorter wait times between jobs, fast warm-up and first-copy-out times, and reduced energy consumption over similar desktop printers.*

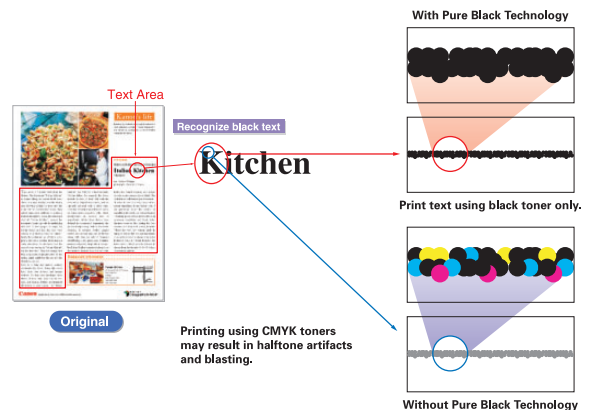
Color RAPID Fusing Technology



DUPLEX COLOR SCANNING

Whether you need to capture a single page or scan a stack of paper, the Color imageRUNNER C1022 Series can quickly create accurate copies and electronic versions of your original documents at up to 20 impressions per minute (letter).

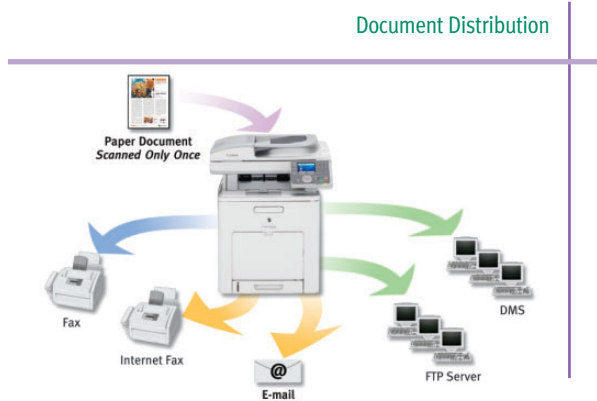
Pure Black Technology



** Color imageRUNNER C1022 consumes as low as 1W of power in deep Sleep mode.*

COLOR DOCUMENT DISTRIBUTION TECHNOLOGY

Sharing information with people across the office or around the world can be accomplished at the touch of a button through color document distribution technology.* Scanned documents can be quickly sent as TIFF, JPEG, or PDF files to multiple network destinations—such as e-mail, fax, I-fax, and network folders—in a simple operation. Destinations can be manually entered or chosen from entries located in the internal Address Book.



BUSINESS-FRIENDLY DOCUMENT FORMATS

The Color imageRUNNER C1022 Series also supports Canon's High Compression PDF mode to reduce the size of color documents for faster and compact sending, and Searchable PDF mode to capture the text in scanned pages for retrieval and indexing.

FILE SIZE COMPARISON
Original: Letter-Sized Hard Copy (Color Graphics with Text)

Format	Resolution	File Size
Canon's PDF (Compact)	300-dpi Color Scan	File Size: 150 KB
PDF File Format	300-dpi Color Scan	File Size: 2 MB
PDF File Format	300-dpi B/W Scan	File Size: 390 KB

PDF High Compression Mode

USB MEMORY AND FLASH MEDIA SUPPORT

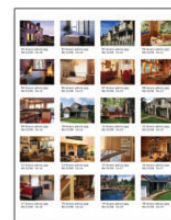
For the ultimate in document portability, scanned pages can be saved as TIFF, JPEG, or PDF files using the Scan-to-USB Memory function. You can output documents when needed—even when you don't have access to a computer—with the Direct Print feature. This allows the reading of TIFF or JPEG files stored on a USB memory device or SD/MMC/CompactFlash media card by inserting them into the appropriate ports on the side of the control panel.

Control Panels with USB Memory and Flash Media Card



The Direct Print feature provides a preview of each image on the colorful display panel to quickly output individual images with brilliant quality. Using the Index Print feature,** users can create contact sheets of all stored images with up to 20 photos on a single letter-sized page. For larger prints of multiple images, the Layout Print feature** can output two or four photos per page.

Index Print



Layout Print



* Standard on the Color imageRUNNER C1022i model.

** Supports JPEG images.

USABILITY AND ACCESSIBILITY

INTUITIVE INTERFACE AND NAVIGATION

The user interface of the Color imageRUNNER C1022 Series features a vivid 3.5" color TFT display to make operation easy. Similar to the familiar interface of other consumer electronic devices, this interface uses dynamic “Any Keys” that change with each menu. And to assist in the selection of features and functions as well as the entry of alphanumeric characters, an innovative “Scroll Wheel” and navigation buttons are utilized.

To accelerate workflows, users can register “Custom Keys” for frequently used functions, one-touch keys for common Address Book entries and network destinations, “Mode Memory” to reuse output configurations, and “Favorites” for quick access to various menu screens.



Control Panel with Scroll Wheel

ACCESSIBILITY

Whether the device is placed on a desktop or atop a pedestal on the floor, the control panel can be tilted up or down to provide an appropriate angle for seated users to operate the device. In addition, the high-contrast color TFT display makes it much easier to view the screen with minimal strain.

ELECTRONIC DOCUMENTATION

Answers to users' questions about the operation of the Color imageRUNNER C1022 Series are only a click away in interactive HTML-based Operator Manuals. Information can be searched, printed and even bookmarked in popular Web browsers quickly and easily. A set of PDF Operator Manuals is also provided as standard.



HTML-based Manual

SIMPLIFIED MAINTENANCE AND INSTALLATION

The Color imageRUNNER C1022 Series has been designed with front-load access to all consumables, providing quick replenishment with minimal downtime. The devices also use distinctive all-in-one cartridges to minimize the number of replacement parts needed to maintain uptime. Device setup is facilitated through on-screen guides and tutorials on the control panel to get up and running quickly.

Front-load Access



Specifications



Main Unit

Cassette Feeding Unit-AB1

MAIN UNIT

Type:	Color Digital Multifunction Imaging System
Copying Method:	Laser Dry Electrostatic Transfer
Developing System:	Dry Dual Component Developing System
Memory:	Standard: 256MB RAM (C1022) 768MB RAM (C1022i) Maximum: 768MB RAM (C1022/C1022i)
Network Interface Connections:	10/100Base-TX (RJ-45)
Other Interface:	USB 2.0 (Device), USB 2.0 x 2 (Host)
First-Copy Time:	12.5 Seconds (Color) 12.5 Seconds (B/W)
Warm-Up Time:	Less than 60 seconds after Powering On
Copy/Print Speed (B/W, Color):	22/22 ppm (Letter)
Scan Resolution:	600 dpi x 600 dpi
Copy Resolution:	600 dpi x 600 dpi
Print Resolution:	2400 dpi equivalent x 600 dpi
Halftone:	256 Gradations (Continuous-Tone)
Paper Sources	
Standard:	250-Sheet Paper Cassette 100-Sheet Stack Bypass
Optional:	500-Sheet Paper Cassette Feeder
Maximum:	850 Sheets
Paper Sizes	
Drawers:	Legal, Letter, Executive
Bypass:	Legal, Letter, Statement, Executive, Custom size (3" x 5" to 8-1/2" x 14") and Envelopes
Acceptable Paper Weight	
Drawers:	16 lb. Bond to 32 lb. Bond (60-120 g/m ²)
Bypass:	16 lb. Bond to 65 lb. Cover (60-176 g/m ²)
Duplexing:	Standard Automatic Trayless Duplexing (Letter and Legal)
Image Reader:	Standard
Acceptable Originals:	Sheet, Book, 3-Dimensional Objects (up to 4.4 lb.)
Maximum Original Size:	Legal

Document Feeding Method:	Duplexing Automatic Document Feeder (Standard on all models) Statement to Legal 50 Sheets (LTR)/30 Sheets (LGL)
Acceptable Originals:	
Paper Capacity:	
Acceptable Paper Weight of Originals:	Simplex 13 lb. to 32 lb. Bond (1 page) (50 to 128 g/m ²) 13 lb. to 28 lb. Bond (more than 2 pages) (50 to 105 g/m ²) Duplex 17 lb. to 28 lb. Bond (64 to 105 g/m ²)
Scan Speed:	20 ipm (300 dpi) 20 ipm (600 dpi)
Dimensions (H x W x D):	24-7/8" x 21-1/2" x 20-3/4" (Main Unit) 36-7/8" x 21-1/2" x 21-3/8" (with Optional Cassette)
Installation Space (W x D):	21-1/2" x 44-7/8" (with drawer pulled out and with rear cover open)
Weight:	Approximately 96 lb. (44 kg Main Unit including cartridges)
Power Requirements:	120V-127V AC, 50/60Hz, 15A
Power Consumption:	Less than 1,300W (Main Unit) Less than 1,350W (with Optional Cassette)
Plug:	NEMA 5-15P
Cartridge (Estimated Yield):	Black: 6,000 images @ 5% coverage Full Color: 6,000 images @ 5% coverage
Copy Features	
Multiple Copies:	1 to 99
Max. Copy Reservation:	10 Jobs
Color Mode:	Auto Color, Full Color, Black
Copy Exposure:	Automatic or Manual (9 levels)
Magnification	
Preset Reduction:	50%, 64%, 78%
Preset Enlargement:	129%, 200%
Zoom Mode:	50% - 200% (1% increments)
Printing Features	
CPU:	Canon Custom Processor (Shared)
Memory:	Standard: 256MB RAM (C1022) 768MB RAM (C1022i) Maximum: 768MB RAM (C1022/C1022i)
Hard Disk Drive:	N/A
Print Resolution	
UFR II LT:	2400 dpi equivalent x 600 dpi
PCL 5c/6:	2400 dpi equivalent x 600 dpi
Printer Drivers	
UFR II LT:	Windows® (Windows 2000/XP/Server 2003/Server 2008/Vista®), Citrix MetaFrame, Macintosh® (OS 10.2.8 or later)
PCL 5c/6:	Windows (Windows 2000/XP/Server 2003/Server 2008/Vista®), Citrix MetaFrame
Direct Print	
Supported Media:	USB Memory, SD Secure Digital Memory Card, SDHC Memory Card, Compact Flash (CF) Card: Type I/II (3.3 V), Microdrive, Memory Stick, Memory Stick PRO, miniSD Card,* microSD Card,* Memory Stick Duo,* Memory Stick PRO Duo*
Data Format:	TIFF, JPEG

Scan Features	
Network TWAIN Scan:	Standard
Network Scan Utility:	Color Network ScanGear
Scan to USB	
Supported Media:	USB Memory
Data Format:	TIFF, JPEG, PDF, PDF (Compact), PDF (OCR)**
Document Distribution Technology	
Color Mode:	Full Color, B/W
Address Book Capacity:	Max. 300 Destinations (Includes 200 One-Touch Buttons)
Sending Methods:	E-mail, I-fax, SMB, File Server (FTP), Super G3 Fax (Standard on C1022i, Optional for C1022)
Communication Protocol	
File:	FTP (TCP/IP), SMB (TCP/IP)
E-mail/I-fax:	SMTP, POP3, I-fax (Simple)
Data Format	
File, E-mail:	TIFF, JPEG, PDF, PDF (Compact), PDF (OCR)
I-fax:	TIFF (MH, MR, MMR)
OPTIONAL ACCESSORIES	
Super G3 Fax Board-AB1 (Standard on C1022i)	
Applicable Line:	Public Switched Telephone Network (PSTN)
Connection Lines:	One-Line
Sending/Original Size:	Statement to Legal
Recording/Printing Size:	Statement to Legal
PCL Printer Kit-Y1 (Standard on C1022i)*	
CPU:	Canon Custom Processor (Shared)
Supported PDL:	PCL 5c/PCL 6
Print Resolution	
PCL 5c/6:	2400 dpi equivalent x 600 dpi
Printer Drivers	
PCL 5c/6:	Windows (Windows 2000/XP/Server 2003/Server 2008/Vista®), Citrix MetaFrame
Cassette Feeding Unit-AB1	
Paper Sizes:	Legal, Letter, Executive
Paper Drawers Capacity:	500 Sheets x 1 Cassette (20 lb. Bond (75 g/m ²)) 12" x 17-3/8" x 21-3/8"
Dimensions (H x W x D):	
Weight:	Approximately 28.7 lb. (13 kg)
OTHER OPTIONAL ACCESSORIES	
• Barcode Printing Kit-C1* [†]	• Cabinet Type-A**
• Color Send Kit-W1* [†]	• Card Reader-E1 [‡]
• Handset-J1 [†]	• Card Reader Attachment Kit-F1
• System Upgrade RAM-A1 [†]	• Braille Label Kit-E1
Footnotes:	
* Memory cards that can be inserted into the slot using an adapter.	
** Requires Color Send Kit-W1 when configured on C1022 model.	
[†] Requires System Upgrade RAM-A1 when configured on C1022 model.	
• Requires PCL Printer Kit-Y1 when configured on C1022 model.	
[‡] Standard on C1022i model.	
▪ Requires fax capability for use.	
▪ Cassette Feeding Unit-AB1 and Cabinet Type-A cannot be installed at the same time.	
▫ Requires Card Reader Attachment Kit-F1 for installation.	



As an ENERGY STAR® Partner, Canon U.S.A., Inc. has determined that these products meet the ENERGY STAR guidelines for energy efficiency. ENERGY STAR and the ENERGY STAR mark are registered U.S. marks. Microsoft, Windows, and Windows Vista are registered trademarks of Microsoft Corporation in the United States and/or other countries. Macintosh is a trademark of Apple Inc. CANON, IMAGERUNNER, and the GENUINE logo are registered trademarks of Canon Inc. in the United States and may also be registered trademarks or trademarks in other countries. IMAGEWARE is a registered trademark of Canon U.S.A., Inc. in the United States and is a trademark of Canon Inc. in certain other countries. IMAGEANYWARE is a trademark of Canon. All other referenced product names and marks are trademarks of their respective owners and are hereby acknowledged. Specifications and availability subject to change without notice. Models shown with optional accessories.
©2010 Canon U.S.A., Inc. All rights reserved.

Federal Law prohibits copying of certain documents. Violators may be subject to penalties. We suggest that you check with your own legal counsel. Canon U.S.A., Inc. and Canon Canada, Inc. intend to cooperate with Law Enforcement Agencies in connection with claims of unauthorized copying.

