

**Canon**

 **imagePROGRAF®**  
**iPF710/610**

# iPF710/610

**GENERAL USE/TECHNICAL DOCUMENTS**  
**LARGE-FORMAT PRINTING**



# Introducing the imagePROGRAF iPF710 and iPF610 printers

Technology that works harder  
so you can work smarter



Introducing the newest additions to Canon's world renowned line of imagePROGRAF large-format printing solutions—the 36"-wide iPF710 and the 24"-wide iPF610 printers.

These easy-to-use print systems deliver high-quality output with precision, speed, and hassle-free maintenance. Specifically designed for general office printing and technical document applications, these printers enable users to produce a diverse range of output from spectacular full-color posters to complex technical documents—faster and easier than ever before.

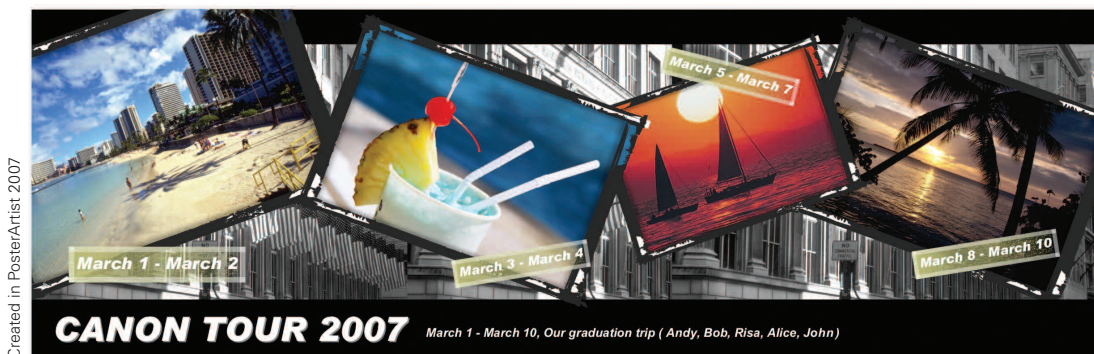
Canon imagePROGRAF iPF710 and iPF610 large-format printers are ideal for:

#### GENERAL USE

Large-format color output of presentations, signs, posters, displays, and other oversize prints, along with everyday, general color business documents—all in bold, expressive color.

#### TECHNICAL DOCUMENTS

Fast and accurate printing of Computer-Aided Design (CAD) drawings, architectural elevations, Geographic Information Systems (GIS) maps, marketing planograms, and other intricate documents requiring fine sharp lines, smooth curves, crisp text, fade/scratch resistance, and incomparable detail.





# iPF710/610

## FEATURES



These easy-to-use printers are powered by advanced Canon technologies, seamlessly integrated into a comprehensive large-format printing solution.

### HIGH-QUALITY PRINTING

- High-resolution output up to 2400 x 1200 dpi
- Fine lines with a precise 4-picoliter ink droplet
- Unique 5-color dye/pigment Reactive Ink technology optimizes imaging
- Colorfast dye-based inks for bold expressive color
- Pigment Matte Black ink for durable line drawings and text

### MAXIMUM PRODUCTIVITY

- High-speed output on a wide variety of media types
- Long-life, super-high-density print-head with 15,360 nozzles
- Canon's advanced L-COA high-speed processor optimizes performance



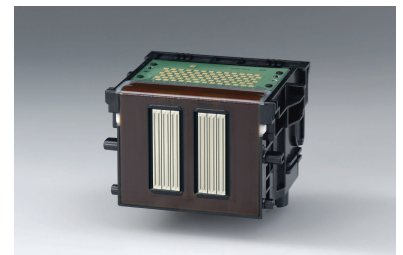
5-color Reactive Ink technology

### VERSATILITY

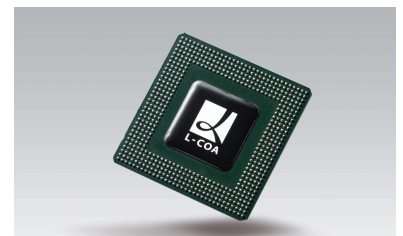
- One printer handles detailed technical documents and full-color graphics.
- Direct printing support for HP-GL/2 and HP RTL documents
- The HDI Driver enables direct printing from AutoCAD®.
- Point-and-click software solutions from Canon make printing your own posters, presentations, and signs easy.

### EASY TO USE

- Quiet operation for a more comfortable working environment
- Convenient media feed options for everyday use
- Large LCD panel provides better visibility and more information
- Easy access to user manuals, product information, and software applications



High-density print-head



L-COA Image Processor

# Printing made simple—so you can get the results you want

## CANON'S 5-COLOR DYE/PIGMENT REACTIVE INK TECHNOLOGY

From technical applications to general office use, Canon's 5-color dye/pigment Reactive Ink technology delivers precise lines, smooth curves, and excellent graphic images. Four colorfast dye-based inks (Cyan, Magenta, Yellow, and Black) ensure bold expressive color output, while two channels of pigment-based Matte Black ink enhance the quality of line drawings and text-oriented office documents even on uncoated papers. Canon's advanced Reactive Ink technology helps prevent colors and text from bleeding and improves adhesion for more durable output. All inks are loaded at the same time with automatic switching of the black inks for best results on the media being used.

## A PRIORITY ON PRECISION

Precision counts in every business and is especially important for technical document applications like GIS mapping, CAD designs, and architectural drawings. Canon's large-format printing systems make precision a priority. The embedded L-COA processor is

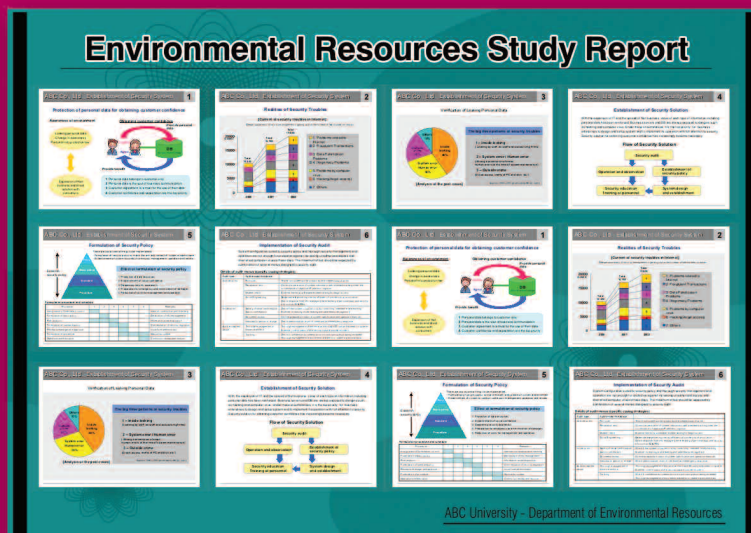
the system's "brain" that handles complex data and drives the super-high-density print-head to lay ink down with precision.

## FAST, HIGH-QUALITY, HIGH-RESOLUTION OUTPUT

A large 1.07" super-high-density print-head deposits tiny droplets of ink (4pl) through 15,360 nozzles to produce high-resolution output up to 2400 x 1200 dpi. More nozzles means that ink is ejected more efficiently with each pass of the print-head. This reduces the number of passes required to produce a high-quality image and increases throughput speed in all print modes.

## MANAGE MEDIA EASILY

A variety of new enhancements make the iPF710/610 easy to use. A media detection and management system helps conserve precious time and materials by warning the user if there's not enough media to complete a job. And a new, automatic media-switching feature on the iPF610 enables media selection within the printer driver, eliminating the need to walk to the printer to make a change.





# Software and workflow solutions to help you do more

The iPF710 and iPF610 printers are complete large-format printing solutions designed to help all levels of users do more—better, faster, and more efficiently.

**Canon Printer Driver 2007\*** for Windows® and Macintosh® systems provides intuitive operation with Easy and Advanced settings.

**Digital Photo Front-Access\*\*\*** software provides a utility to import, edit, and print photos easily for large-format output.

**The HDI Driver\*\*** lets you print directly from AutoCAD/AutoCAD LT.

**PosterArtist 2007,\*\*\*** is an optional software for PCs that makes it easy to create full-color large-format posters, signage, and banners. Upload your own images or tap into more than a 1GB of customizable templates, royalty-free images, and clip art. The new Auto Design function now makes it even easier—just specify your layout elements and the software will automatically generate draft designs for you!



## PRINT WHAT YOU WANT—HOW YOU WANT IT

Office documents come in all sizes and formats—from photos, graphics, and charts to Microsoft® files. The iPF710/610 printers can help you compose, edit, and enlarge these documents—whether you have the application file or just a printed original. The Free Layout feature (PC) and Auto Layout (Mac) enable digital documents of different file formats to be composed onto a single page and printed together. Or you can enlarge documents directly from a printed original by integrating with a Canon imageRUNNER® device with Universal Send, to create a seamless scan-to-print workflow.

## INFORMATION AT YOUR FINGERTIPS

Web Link puts the information that you need right at your fingertips. With this feature you just point-and-click to access media information, product manuals, and external Web sites with the latest product information.

## OFFICE COMPATIBLE AND READY TO WORK!

With low power consumption, easy media feed options, and quiet operation, these network ready printers are an out-of-the-box large-format printing solution designed to fit comfortably into virtually any office environment.

\* Operating Systems: Windows® 98SE/Me/2000/XP/2003 Server, Windows Vista®, Macintosh® OS 9.1/X/10.2/10.3/10.4 (Power PC or Intel®)

\*\* For AutoCAD or AutoCAD LT 2000, 2000i, 2002, 2003, 2004, 2005, 2006, 2007

\*\*\* PC only. Windows 2000/XP/Windows Vista

# iPF710/610

## YOU CAN DO IT WITH imagePROGRAF

With every imagePROGRAF solution, Canon provides the tools and technologies you need to create, process, and print full-color, large-format graphics. The iPF710/610 printers' advanced printing technologies, user-friendly features, and easy maintenance make them ideal for projects such as:

**Posters, Presentations, and Signs:** Print what you need, when you need it, in bold, expressive color.

**CAD:** Intricate 3-D renderings, multi-layer circuit boards, exploded-view diagrams of mechanical systems, parts diagrams, manufacturing plans, product and architectural renderings

**GIS:** Emergency response planning, color-enhanced satellite imagery with topographic overlays, land-use mapping, demographic and geographic data overlaying

**Floor plans and planograms:** Layouts for retail traffic flow, shelf division, planning for promotional displays, floor space optimization

**And much more:** From everyday office documents to oversize graphics and technical documents, you can print it bigger and better with an imagePROGRAF printer!



# iPF710

## SPECIFICATIONS



### Print-Head

PF-03

### Technology

FINE (Photolithography Inkjet Nozzle Engineering)

### Print Resolution (Max.)

2400 x 1200 dpi

### Line Accuracy\*

±0.1% or Less

### Minimum Line Weight\*\*

0.02mm

### Number of Nozzles

Matte Black: 5,120 Nozzles  
Other Colors: 2,560 Nozzles per Color

### Droplet Size

4 Picoliter

### Nozzle Pitch (Head Resolution)

1200 dpi x Two Rows

### Print Head Swath

1.07 inch

### Ink Type

#### Dye

Cyan (C), Magenta (M), Yellow (Y), Black (K)

#### Pigment

Matte Black (MBK) – Two Channels

### Ink Tank

PFI-102

### Ink Tank Capacity\*\*\*

130ml per Color

### Number of Colors

5

### Ink Supply Method

Tubing System

### Nozzle Recovery System

Non-firing Nozzle Detection and Compensation

### Printer Controller

L-COA Controller

### Printer Memory

256MB

### Media Feed

Front-loading Manual Feed, Rear-loading Roll Feed

### Media Width

#### Roll Feed

10" – 36" (254mm – 914.4mm)

#### Cut Sheet

8" – 36" (203.2mm – 914.4mm)

### Printable Margins

#### Roll Feed

All Sides: 0.12" (3mm) or 0" for Borderless

### Minimum Printable Media Length

#### Roll Feed

8.0" (203mm)

### Maximum Print Length<sup>†</sup>

#### Roll Feed

59' (18m)

#### Cut Sheet (Top)

5.2' (1.6m)

### Borderless Printing Widths (Roll Media Only)

10", 14", 16", 24", 36",  
B2 (20.28"/515mm), A1 (23.38"/594mm)  
B1 (28.66"/728mm), AO(33.11"/841mm)

### Media Cutter

Durable Rotary Blade

### Media Thickness

#### Roll Feed

0.07 – 0.8mm (2.8 – 31.4mil)

#### Cut Sheet

0.07 – 0.8mm (2.8 – 31.4mil)

### Media Core Sizes

2" or 3" Core (2/3" Core Adapter Included)

### Maximum Roll Outer Diameter

5.9" (150mm)

### Software

#### Printing Software

imagePROGRAF Printer Driver 2007, HDI Driver for AutoCAD®/AutoCAD LT 2000–2008,<sup>††</sup> Printer Driver Extra Kit<sup>††</sup> (Free Layout, imageRUNNER Linking Function)

#### Utilities

Media Configuration Tool

#### Applications

Digital Photo Front-Access, GARO Device Setup Utility, PosterArtist 2007 (optional)

### Device Status

GARO Status Monitor, Remote UI

### Printer Language

GARO (Canon Proprietary), HP-GL/2, HP RTL

### Operating Systems<sup>†</sup>

Windows 2000/XP/Server 2003/Windows Vista  
Macintosh OS 9/10 (PowerPC or Intel)

### Interface

#### Standard (Built-in)

USB 2.0 Hi-Speed, 10/100Base-T/TX

#### Optional

IEEE1394 (FireWire)

### Acoustic Noise

#### Operation

52dB (A) or Less

#### Standby

35dB (A) or Less

### Acoustic Power

6.6 Bels or Less

### Power Supply

AC 100–240V (50-60Hz)

### Power Consumption

#### Maximum

140W or Less

### Standby

5W or Less (10W or less  
when IEEE1394 is mounted)

### Power Off

1W or Less (Executive Order Compliant)

### Certifications

UL®, FCC Class B, ENERGY STAR®

### Operational Environment

#### Temperature

59 – 86 F° (15 – 30 C°)

#### Relative Humidity

10 – 80% (No Condensation)

### Printer Dimensions (H x W x D)

59.3" x 34.3" x 43.1"  
1507mm x 871mm x 1094mm

### Weight (with Stand)

Approx. 141 lb.  
64kg

### Options

IEEE1394 Expansion Board (EB-05)  
Roll Holder Set (RH2-32)  
PosterArtist 2007

### User Replaceable Items

Print-Head (PF-03)  
Ink Tanks (PFI-102)  
Maintenance Cartridge (MC-07)  
Cutter Blade (CT-05)

### What's In The Box

Printer, User Software CD (Printer Driver, HDI Driver, Utilities), Application CDs, 6 Starter Ink Tanks (MBK x 2, Cyan, Magenta, Yellow, Black), 2" Core Media Spool with 3" Adapter, Print-Head, Maintenance Cartridge, Media Cutter, Built-in Ethernet/USB 2.0 Interface, Quick Setup Guide (Poster), Printer Reference Guide (Booklet), Power Cord, One-Year Onsite Warranty, Registration Card, Stand, Basket, Hardware (For Setting Up the Stand)

\* After user adjustment and under the same environmental conditions. Applies to media for line drawing only.

\*\* Theoretical value based on data resolution.

\*\*\* The starter ink tanks initially packaged with the printer are not the same capacity as the replacement ink tanks specified here.

† The maximum printable length varies depending on the application, OS, and RIP used.

†† For AutoCAD or AutoCAD LT 2000/2000i/2002/2004/2005/2006/2007/2008

▪ Windows 2000/XP and for Macintosh, Auto Layout, and imageRUNNER Linking Function

▲ For imagePROGRAF Printer Driver 2007. For printing from PostScript® applications such as Adobe® Illustrator® or QuarkXPress™, please use a PostScript compatible RIP package. For a list of Canon recommended RIP packages, please consult with Canon Alliance and Industry Market program list of RIP vendors.



# iPF610

## SPECIFICATIONS



### Print-Head

PF-03

### Technology

FINE (Photolithography Inkjet Nozzle Engineering)

### Print Resolution (Max.)

2400 x 1200 dpi

### Line Accuracy\*

±0.1% or Less

### Minimum Line Weight\*\*

0.02mm

### Number of Nozzles

Matte Black: 5,120 Nozzles  
Other Colors: 2,560 Nozzles per Color

### Droplet Size

4 Picoliter

### Nozzle Pitch (Head Resolution)

1200 dpi x Two Rows

### Print Head Swath

1.07 inch

### Ink Type

#### Dye

Cyan (C), Magenta (M), Yellow (Y), Black (K)

#### Pigment

Matte Black (MBK)

### Ink Tank

PFI-102

### Ink Tank Capacity\*\*\*

130ml per Color

### Number of Colors

5

### Ink Supply Method

Tubing System

### Nozzle Recovery System

Non-firing Nozzle Detection and Compensation

### Printer Controller

L-COA Controller

### Printer Memory

256MB

### Media Feed

Top-loading Manual Feed, Front-loading Manual Feed,  
Cassette, Rear-loading Roll Feed

### Media Width

#### Roll Feed, Manual Feed

8" – 24" (203mm – 610mm)

#### Cassette

8" – 17" (203mm – 432mm)

### Printable Margins

#### Roll Feed

All Sides: 0.12" (3mm) or 0" for Borderless

#### Cassette

All Sides: 0.12" (3mm)

#### Manual Feed

Left, Right, Trailing: 0.12" (3mm),  
Leading: 0.90" (23mm) or 0.12" (3mm)

### Minimum Printable Media Length

#### Roll Feed

8.0" (203mm)

#### Cassette

11.0" (279mm)

#### Top-Loading Manual Feed

11.0" (279mm)

#### Front-Loading Manual Feed

20.5" (520mm)

### Maximum Print Length<sup>1</sup>

#### Roll Feed

59' (18m)

#### Cassette

23.4" (594mm)

#### Manual Feed (Top)

5.2' (1.6m)

#### Manual Feed (Front)

36.0" (914mm)

#### Cassette Capacity (Plain Paper)

250 Sheets (Letter)  
100 Sheets (up to 13" x 19")  
50 Sheets (up to 17" x 22")

### Borderless Printing Widths (Roll Media Only)

10", 13", 14", 16", 17", 24", B4 (10.12"/257mm),  
A2 (16.54"/420mm), B2 (20.28"/515mm),  
A1 (23.38"/594mm)

### Media Cutter

Durable Rotary Blade

### Media Thickness

#### Cassette

0.08 – 0.3mm (3.2 – 11.8mil)

#### Top-Loading Manual Feed

0.07 – 0.8mm (2.8 – 31.4mil)

#### Front-Loading Manual Feed

0.5 – 1.5mm (19.6 – 59.0mil)

#### Roll Feed

0.07 – 0.8mm (2.8 – 31.4mil)

### Media Core Sizes

2" or 3" Core (2/3" Core Adapter Included)

### Maximum Roll Outer Diameter

5.9" (150mm)

### Software

#### Printing Software

imagePROGRAF Printer Driver 2007, HDI Driver for  
AutoCAD/AutoCAD, LT 2000–2008,<sup>††</sup> Printer Driver Extra  
Kit<sup>†</sup> (Free Layout, imageRUNNER Linking Function)

#### Utilities

Media Configuration Tool

#### Applications

Digital Photo Front-Access, GARO Device Setup Utility,  
PosterArtist 2007 (optional)

#### Device Status

GARO Status Monitor, Remote UI

#### Printer Language

GARO (Canon Proprietary), HP-GL/2, HP RTL

#### Operating Systems<sup>4</sup>

Windows<sup>®</sup> 2000/XP/Server 2003/Windows Vista  
Macintosh<sup>®</sup> OS 9/10 (PowerPC or Intel)

### Interface

#### Standard (Built-in)

USB 2.0 Hi-Speed, 10/100Base-T/TX

#### Optional

IEEE1394 (FireWire<sup>®</sup>)

### Acoustic Noise

#### Operation

52dB (A) or Less

#### Standby

35dB (A) or Less

#### Acoustic Power

6.6 Bels or Less

### Power Supply

AC 100–120V (50–60Hz)

### Power Consumption

#### Maximum

100W or Less

#### Standby

5W or Less (10W or less when IEEE1394 is mounted)

#### Power Off

1W or Less (Executive Order Compliant)

### Certifications

UL<sup>®</sup>, FCC Class B, ENERGY STAR<sup>®</sup>

### Operational Environment

#### Temperature

59 – 86 F° (15 – 30 C°)

#### Relative Humidity

10 – 80% (No Condensation)

### Dimensions (H x W x D)

39.3" x 39" x 38.4"  
(997mm x 991mm x 989mm)

### Weight (with Stand)

Approx. 149.9 lb. (68kg)

### Options

IEEE1394 Expansion Board (EB-05)  
Roll Holder Set (RH2 -24)  
PosterArtist 2007

### User Replaceable Items

Print-Head (PF-03)  
Ink Tanks (PFI-102)  
Maintenance Cartridge (MC-16)

### What's In The Box

Printer, User Software CD (Printer Driver, HDI Driver,  
Utilities), Application CDs, 6 Starter Ink Tanks (MBK x 2,  
Cyan, Magenta, Yellow, Black), 2" Core Media Spool with  
3" Adapter, Print-Head, Maintenance Cartridge, Media  
Cutter, Built-in Ethernet/USB 2.0 Interface, Quick Setup  
Guide (Poster), Printer Reference Guide (Booklet), Power  
Cord, One-Year Onsite Warranty, Registration Card,  
Stand, Basket, Hardware (For Setting Up the Stand)

\* After user adjustment and under the same environmental conditions. Applies to media for line drawing only.

\*\* Theoretical value based on data resolution

\*\*\* The starter ink tanks initially packaged with the printer are not the same capacity as the replacement ink tanks specified here.

† The maximum printable length varies depending on the application, OS, and RIP used.

†† For AutoCAD or AutoCAD LT 2000/2000i/2002/2004/2005/2006/2007/2008

▪ Windows 2000/XP/2003 Server and for Macintosh, Auto Layout, and imageRUNNER Linking Function  
▲ For imagePROGRAF Printer Driver 2007. For printing from PostScript<sup>®</sup> applications such as Adobe Illustrator<sup>®</sup> or QuarkXPress<sup>™</sup>, please use a PostScript compatible RIP package. For a list of Canon recommended RIP packages, please consult with Canon Alliance and Industry Market program list of RIP vendors.

**Canon**  
image*ANYWARE*

1-800-OK-CANON  
www.usa.canon.com

Canon U.S.A., Inc.  
One Canon Park  
Melville, NY 11747

As an ENERGY STAR<sup>®</sup> Partner, Canon U.S.A., Inc. has determined that these products meet the ENERGY STAR guidelines for energy efficiency. ENERGY STAR and the ENERGY STAR mark are registered U.S. marks. CANON, IMAGEPROGRAF, and IMAGERUNNER are registered trademarks of Canon Inc. in the United States and may also be registered trademarks or trademarks in other countries. IMAGEANYWARE is a trademark of Canon. All referenced product names and other marks are trademarks of their respective owners. Some items may not be available at this time; please check for availability. Specifications and availability subject to change without notice.  
©2013 Canon U.S.A., Inc. All rights reserved.

