

**Canon**

**imageRUNNER**  
ADVANCE

**C9280 PRO**  
**C9270 PRO**

**High-Volume Office  
and CRD Solutions**

high speed, high volume

color/black and white

flexible in-line finishing options



Simply advanced.

Designed for

**High-volume environments  
that demand stand-out results  
and robust performance**

**Standard Features**

**Copy/Print/Send/Store**

**Color/Black and White**

**Print up to 80 ppm (BW), 70 ppm (Color); Letter**

**Up to 1200 x 1200 dpi**

**Up to 13" x 19-1/4"**

**9,300-sheet maximum capacity**

**Scan up to 200/140 ipm single-pass duplex**

**Advanced in-line finishing options**

**Versatile paper handling options**

**Hard Disk Drive Lock and Erase, IPsec**



# Simply advanced.

The imageRUNNER ADVANCE C9200 PRO Series delivers high-quality color output with features that help you simplify every step of the production process to maximize productivity and improve profitability. Truly world-class solution centers for digital communications, these models are simply advanced.



## Productive

Amazing speed, nonstop operation, and automated features let you do so much more in so little time.



## Brilliant

Get noticed with high-impact color or crisp black-and-white output that's beautiful, professional, and sure to impress.



## Versatile

Accomplish a wide range of jobs with advanced paper handling, flexible finishing capabilities, and smart document publishing solutions.



## People-Centric

An exceptionally intuitive, simple-to-use interface puts access to all functions right at your fingertips, whether at the device or at your workstation.



## Cloud-Enabled

A simple touch of a button on the user interface lets you access, scan to, or print directly from, certain cloud applications.



## Mobile

Even on the go, you're in control. Print from a laptop, tablet, or smartphone to an imageRUNNER ADVANCE system.



# Impressive speed. Outstanding results.

The imageRUNNER ADVANCE C9200 PRO Series lets you quickly and easily produce professional, high-quality documents with every run. These dependable devices help you meet the most challenging demands and exceed expectations every day.

## Lots of uptime

With durable parts and a range of automated features, the imageRUNNER ADVANCE C9200 PRO systems keep your operation running.



## Continuous run

With remote notification of low supply inventory, you're always prepared. Even better, toner and paper can be replenished on the fly—no need to interrupt a job.

## Long-running reliability

You can count on virtually nonstop operation. Remote service monitoring and automated dispatching keep your system moving efficiently. Canon's E-Drum technology employs an additional coating on the drum surface to deliver high durability while maintaining exceptional image quality. This results in fewer service calls and more uptime.

## Productive scanning flow

A new feeder achieves greater productivity. With faster tray raise-up, documents rapidly enter and move through the scanning process.

## Robust paper handling

A paper capacity of up to 9,300 sheets (letter) helps ensure that long jobs can run without the need for paper replenishment. If the correct paper size or stock is temporarily unavailable, the system can hold that job in the queue and begin the next job without delay. And, when you're printing on three tabs from a bank of five, the other two can automatically be kicked out to a separate tray.

## Power of two processors

Get the exceptional processing speed that your work demands. Canon's Advanced imageCHIP architecture has two dedicated processors that accomplish multiple tasks simultaneously. These devices also incorporate Canon's core technology for high-speed RIP that rapidly renders high-resolution images.

## Exceptional image quality

These systems deliver stunning image quality with astonishing speed. Precise eight-beam red lasers produce high-quality images with proper shading and accurate registration. True 1200 x 1200 dpi print resolution produces crisp text with smooth corners, while subtle gradient transitions give images remarkable clarity.



### Advanced pQ Toner

Canon's pQ toner is oil-free and uses small particles containing micro-dispersed wax, so the toner fixes evenly and lies flat. The result is sharp and vivid images, highly accurate reproduction, appropriate gloss levels, and a smooth finish—even at the highest speeds.



### Reliable color consistency

The imageRUNNER ADVANCE C9200 PRO Series makes it easy to deliver accurate and consistent color, job after job. With Auto Gradation Adjustment, densities and halftones are adjusted to their ideal level, while Real-Time Calibration performs automatic adjustments during print runs. These models support spot color matching with PANTONE® certification, helping graphic-intensive environments achieve the highest color output quality, as well as consistent color management from creation to print.



### ZIMA chip technology

With Canon's proprietary ZIMA chip technology, image components are defined and reproduced accurately to help ensure the delivery of sharp, clear copies.



### Precise registration

Accurate registration is essential to achieving professional results throughout a run. Canon's cassette design allows for every page to enter the printer at the same location. Manual adjustment features offer even greater control over registration. Duplex documents achieve precise front-to-back registration within one millimeter, helping to ensure a professional result.

## An intuitive, customizable interface

Designed to provide the absolute ease you need in a high-volume operation, the interface boasts many customizable, streamlined features.

### Two menus

Press the Main Menu key to gain instant access to business-ready functions. Use the Quick Menu to power productivity by combining and accessing routine tasks at the touch of a button.

### Custom operation

Adjust and tilt the upright control panel to your preferred position. Organize the onscreen buttons to fit the way you work by determining their number, size, and layout. Display your own logo or special graphic as a screen background—even export your chosen background to other devices.



# Everything you need to advance your business

**A Booklet Finisher**

- 3-tray, 4,250-sheet capacity
- 100-sheet, multiposition stapling
- Up to 110 lb. Cover, Plain, Heavy, Coated, Tabs
- 20-sheet saddle-stitching up to 13" x 19-1/4"
- Saddle-fold up to 5 sheets without staple

**Internal Booklet Trimmer**

- Face trim up to 80 pages (40 sheets)

**Internal Puncher Unit**

- 2- and 3-hole punch

**B Paper Folding Unit**

- Z-fold, C-fold, Half-fold, Accordion Z-fold, Double-parallel Fold

**C Professional Puncher**

- Includes Integration Unit
- Up to 80 lb. Cover
- Letter-sized only, Tabs
- Supports various die sets
- Finish punched output

**D Document Insertion Unit**

- Insert preprinted sheets
- Up to 110 lb. Cover, Plain, Heavy, Coated, Tabs
- Up to 13" x 19-1/4"
- Two trays
- 400-sheet total capacity

**E Single-Pass Duplex Document Feeder**

- 300-sheet capacity
- Duplex scan speed up to 200/140 ipm (BW/Color) at 300 dpi

**F Standard Paper Capacity**

- 3,400-sheet total standard paper capacity:
  - 2 x 1,100-sheet paper drawers (Letter)
  - 2 x 550-sheet paper cassettes (Up to 13" x 19-1/4")
  - 1 x 100-sheet Stack Bypass (Up to 13" x 19-1/4")

**Additional Finishing Accessories**

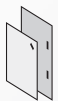


**Staple Finisher**

- 3-tray, 4,250-sheet capacity
- 100-sheet, multiposition stapling
- Up to 110 lb. Cover, Plain, Heavy, Coated, Tabs



**Finishing Options**



Staple Finishing



2- and 3-hole Punching



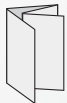
Z-fold



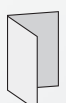
C-fold



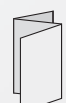
Booklet Finishing



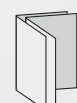
Double-parallel Fold



Half-fold



Accordion Z-fold



Saddle-fold



### G Memory Media

- Scan to, or print from, USB thumb drive or memory media
- Optional multimedia reader/writer supports SD, SDHC, CompactFlash, Memory Stick, Microdrive

### H User Interface

- 10.4" TFT high-resolution touch-screen upright control panel
- Tilt-and-swivel capability
- Customizable UI screen

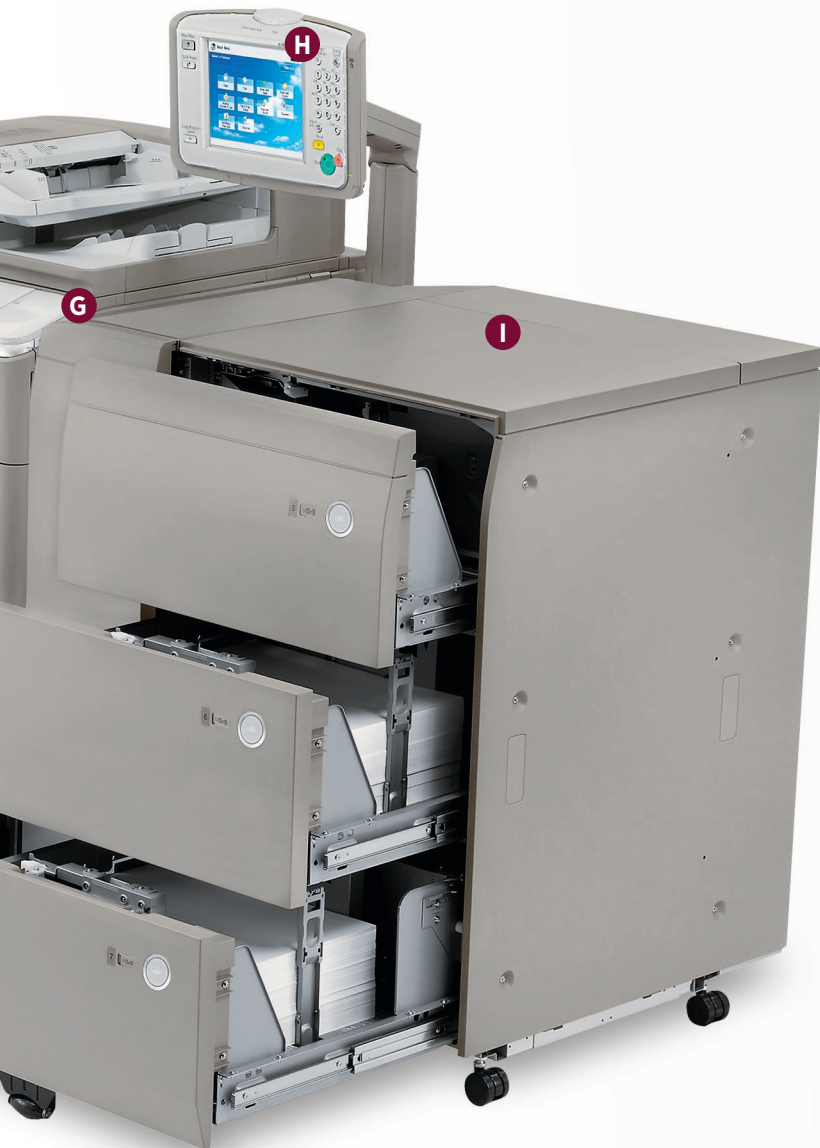


### Keyboard

- External keyboard (optional)
- Connects via USB interface

### I Multi-Drawer Paper Deck

- 6,000-sheet capacity (20 lb. Bond)
- Three paper drawers
- 13" x 19-1/4" maximum paper size
- 14 lb. Bond to 110 lb. Cover, Plain, Heavy, Coated, Tabs

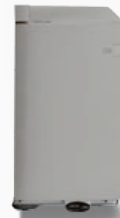


## Additional Paper Handling Accessories



### POD Deck Lite

- 3,500-sheet capacity (20 lb. Bond)
- Supports up to 13" x 19"
- 14 lb. Bond to 110 lb. Cover, Plain, Heavy



### Paper Deck Unit

- 3,500-sheet capacity (20 lb. Bond)
- Supports letter-sized paper
- 14 lb. Bond to 80 lb. Cover, Plain, Heavy

## Print Versatility Options\*

### PCL 5c/6

### Adobe® PostScript® 3™ imagePASS®



- Intel® Pentium® Processor E5300 2.6 GHz
- 2 GB RAM
- 160 GB Hard Disk
- Adobe PS 3/PCL 5c/6

### ColorPASS



- Intel® Core™ i5 660 3.33 GHz Processor
- 2 GB RAM
- 500 GB Hard Disk
- Adobe PS 3/PCL 5c/PCL 6

\* UFR II is standard.

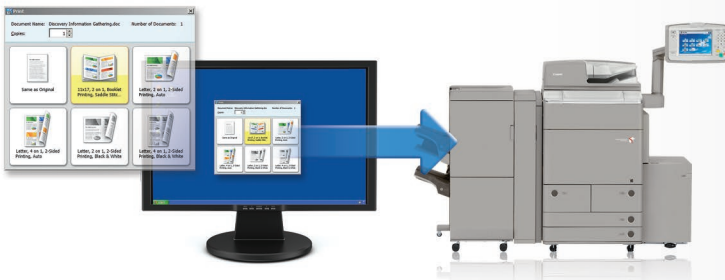


# Intelligent integration. Streamlined production.

Today's fast-paced business world demands fast turnaround and exceptional quality. From time-saving connectivity solutions to tighter job control features, the Canon imageRUNNER ADVANCE C9200 PRO Series gives you the tools you need to consistently exceed expectations.

## Advanced job management

These models are designed to manage workflow with maximum efficiency. With a complete set of advanced job management features, tools, and utilities, jobs will move through your organization with impressive speed and accuracy. And with Canon's innovative MEAP® platform, you can incorporate unique applications, such as cost-recovery and document distribution solutions.



## Document publishing simplified

Manage, prepare, and monitor documents right from your workstation. With imageRUNNER ADVANCE Desktop, you can combine multiple formats, preview files, and select finishing functions, like subset stapling. The Quick Printing Tool lets you print, fax, and convert files to PDFs with drag-and-drop simplicity, without opening the native applications. Even check the status of your imageRUNNER ADVANCE system from your workstation.

For high-volume color environments, Canon's imageWARE Prepress Manager Select offers powerful production capabilities. Prepare complex documents, including various fold types, and preview them before printing. Create personalized output or manipulate documents with scanning tools like deskewing and despeckling. Even print on tabs and insert them in one step.

## Paper Handling and Finishing

### A professional finish

With an expanded range of in-line finishing options, you can configure your system to meet your business needs today and in the future. Add the ability to automatically staple in multiple positions, two - or three-hole punch, professional punch with varied punch patterns, and saddle-stitch and face-trim booklets. Even insert preprinted media to the document set as desired.

### The right paper for the job

Answer the varied needs of your customers with the ability to produce professional-looking reports, booklets, newsletters, manuals, and contracts. These systems easily handle a range of stocks in weights from 14 lb. Bond to 110 lb. Cover, and in sizes from 4" x 5-7/8" to 13" x 19-1/4".







## Digital connectivity

A single-pass duplex color scanner converts paper documents into high-quality digital files in multiple file formats. Universal Send supports an expanded range of file formats, including Scan to Word or PowerPoint®. Advanced PDF features include Adobe® PDF Reader Extensions, Encrypted PDF, and Searchable PDF. For outstanding speed across your network, color file sizes can be reduced with High Compression PDF/XPS.

## On the go

Canon delivers advanced solutions that keep work flowing from virtually anywhere.



### Mobile Devices

Print from, and scan to, your laptop, iPad® or Android™ tablet, and iPhone®, Android, or Blackberry® smartphone. Access an imageRUNNER ADVANCE device to retrieve your job.



### Cloud Portal

Gain quick access to certain cloud-based applications right from your Canon imageRUNNER ADVANCE device. Simply log-in to access or send documents directly from the cloud.



### Advanced Anywhere Print

Print to a connected imageRUNNER ADVANCE system. Then conveniently and securely log-in at any supported device on the network to view and retrieve your print job with this serverless solution.



## Robust security

Canon's multilayered security solutions offer you peace of mind by helping to safeguard information and support security compliance. HDD Erase, a standard feature, removes latent images after each task. A security chip with tamper-resistant hardware protects passwords and encryption keys. IPsec secures data as it traverses the network.

### Standard

UFR II



### Optional

PCL 5c/6

Adobe PostScript 3

imagePASS

ColorPASS

## Choice of controllers

To meet your workflow needs, Canon offers a range of print controllers. Standard UFR II uses a proprietary printer description language to achieve high levels of print performance.

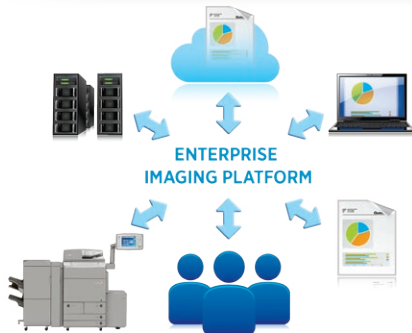
The PCL 5c/6 option uses a Canon-designed controller that achieves 1200 x 1200 dpi print resolution. Optional Adobe® PostScript® 3™ printing technology supports high-quality images and PostScript fonts.

A powerful multitasker, the imagePASS® print controller is an ideal choice for busy operations. With robust processing capabilities, it offers the tools and utilities needed to produce professional-looking documents.

The ColorPASS controller provides exceptionally fast processing and the optional Graphic Arts Feature Set provides added benefits such as color matching, halftone screening, and paper simulation.

## Integrate imaging with enterprise applications

A new middleware technology, based on Service Oriented Architecture (SOA), effortlessly links enterprise applications, such as Oracle® and SAP®, with Customer Relationship Management (CRM) systems like Salesforce.com®, ECM system, and many others. You can also connect your document-intensive processes with these applications. The streamlined workflow automates complex business processes and offers easy access to information, saving both time and money.





# Strong commitment. Eco-conscious solutions.

The imageRUNNER ADVANCE C9200 PRO Series incorporates innovative, eco-conscious solutions that keep your business operating efficiently while helping to reduce your environmental footprint.



## A responsible way to work

Canon knows that the world and the workplace need a greener workflow, and the imageRUNNER ADVANCE C9200 PRO Series, rated EPEAT® Gold, delivers just that. Now you can seamlessly share and distribute digital documents and preview files to make changes prior to printing, reducing the use of paper and toner. Print drivers are defaulted to duplex documents, encouraging two-sided printing to help reduce waste. And with Secure Print, documents are sent to a device but not printed until a password is entered, contributing to a reduction in paper waste.



## Eco-conscious design

Canon is making a difference through creative ecological thinking. These models employ certain components fabricated with recycled plastic from retired products. Canon's innovative green technologies also include bio-based plastic, a plant-derived compound that replaces certain petroleum-based plastic parts.

## A clear strategy

### Greater energy efficiency

From the inside out, the imageRUNNER ADVANCE C9200 PRO Series is designed for high energy efficiency and stellar performance. The combination of fusing technologies and pQ toner helps lower overall energy consumption by minimizing power requirements and reducing energy use during warm-up and standby modes. With advanced technologies present in each model, the Series also meets ENERGY STAR® standards.

### Minimize environmental impact

All Canon suppliers are required to meet Canon's stringent Green Procurement policy and environmental terms. This helps the company exceed the toughest global standards set by the EU RoHS Directive, which restrict the use of certain hazardous substances.

### Reduction of CO<sub>2</sub> emissions

Through its Life Cycle Assessment (LCA) System, Canon has lowered CO<sub>2</sub> emissions by focusing on each stage of the product life cycle, including manufacturing, energy use, and logistics. These products are designed with less packaging to help make transportation more efficient.



# Specifications

## C9280 PRO / C9270 PRO

### Main Unit

#### Operation Panel

10.4" SVGA Full-Color, TFT Upright Screen

#### Memory

Standard: 2 GB RAM  
Maximum: 2.5 GB RAM

#### Hard Disk Drive

Standard: 160 GB  
Maximum: 1 TB

#### Network Interface Connection

Standard: 10Base-T/100Base-TX/1000Base-T  
Optional: Wireless LAN (IEEE 802.1x via third-party adapter)

#### Other Interface

Standard: USB 2.0 (Host) x2, USB 2.0 (Device)  
Optional: Device Port [USB 2.0 (Host) x2], Serial Interface, Copy Control Interface

#### Copy/Print Speed (BW/Color; Letter)

**C9280:** Up to 80/70 ppm  
**C9270:** Up to 70/65 ppm

#### First-Copy-Out Time (Letter)

**C9280:** BW: As fast as 4.4 Seconds  
Color: As fast as 6.0 Seconds  
**C9270:** BW: As fast as 4.9 Seconds  
Color: As fast as 6.6 Seconds

#### Paper Sources (20 lb. Bond)

Standard: Dual 1,100-sheet Paper Drawers, Dual 550-sheet Paper Cassettes, 100-sheet Stack Bypass  
Maximum: 9,300 Sheets (with Optional Multi-Drawer Paper Deck)

#### Output Paper Capacity (20 lb. Bond)

4,250 Sheets (with Staple Finisher-K1 or Booklet Finisher-K1)

#### Acceptable Paper Sizes

Drawers: Letter

#### Cassette:

13" x 19", 12-5/8" x 17-11/16", 12" x 18", 11" x 17", Legal, Letter, Letter-R, Executive, Statement-R, Custom Size (5-1/2" x 7-1/8" to 13" x 19-1/4")

#### Bypass:

13" x 19", 12-5/8" x 17-11/16", 12" x 18", 11" x 17", Legal, Letter, Letter-R, Executive, Statement-R, Envelopes, Custom Size (4" x 5-7/8" to 13" x 19-1/4")

#### Acceptable Paper Weights

Drawers/  
Cassettes: 14 lb. Bond to 80 lb. Cover (52 to 220 g/m<sup>2</sup>)  
Bypass: 14 lb. Bond to 110 lb. Cover (52 to 300 g/m<sup>2</sup>)

#### Warm-up Time

From Power On: Approximately 31 Seconds  
Quick Startup  
Mode: 7 Seconds\*

#### Power Requirements/Plug

208 V AC, 60 Hz, 12 A/NEMA 6-15P

#### Dimensions (H x W x D)

55-1/4" x 46-1/2" x 36-3/4"\*\*\*

#### Installation Space (W x D)

63" x 36-3/4"

#### Weight

Approx. 615 lb. (279 kg)\*\*\*

#### Toner (Estimated Yield @ 5% Coverage)

Black: 72,000 Images  
Color (C,M,Y): 54,000 Images

### Document Feeder

#### Scan Method

Single-Pass Duplexing Automatic Document Feeder

#### Acceptable Originals

Paper Sizes: 11" x 17", Legal, Letter, Letter-R, Statement, Statement-R

#### Scan Speed (BW/Color; Letter)

Simplex: Up to 120/120 ipm (300 dpi)  
Up to 120/70 ipm (600 dpi)  
Duplex: Up to 200/140 ipm (300 dpi)  
Up to 120/70 ipm (600 dpi)

**Paper Capacity (20 lb. Bond):** 300 Sheets

### Print Specifications

**Engine Resolution:** 1200 x 1200 dpi

#### PDL Support

Standard: UFR II  
Optional: PCL 5c/6, Adobe PS 3

#### Print Driver Supported OS

UFR II, PCL 5c/6, Adobe PS 3:  
Windows\* (XP/Windows Vista\*/7/8), Windows Server (2003/2008/2008 R2/SBS 2011/2012), Windows Terminal Servers (Server 2003/Server 2008/Server 2008 R2/2012), Microsoft\* Clustering Server (Server 2003/Server 2003 R2/Server 2008/Server 2008 R2), Citrix (Presentation Server 4.5, Xen App 5.0/6.0/6.5, Xen Desktop 4.0/5.0/5.5/5.6), Macintosh\* (OS X 10.5.8 or later, UFR II and PS 3 only), VMware, SAP (PS and PCL Only)

#### Direct Print Support

Standard: TIFF, JPEG  
Optional: PDF, EPS,† XPS††

### Universal Send Specifications

#### Sending Method

E-mail, I-Fax, File Server (FTP, SMB, WebDAV), Mail Box, Super G3 Fax (Optional)

#### Communication Protocol

File: FTP (TCP/IP), SMB (TCP/IP), WebDAV  
E-mail/I-Fax: SMTP, POP3, I-Fax (Simple, Full)

#### File Format

Standard: TIFF, JPEG, PDF, PDF (Compact), PDF (Searchable), PDF (Apply Policy), PDF (Optimize for Web), PDF/XPS (OCR), PDF/A-1b, XPS, XPS (Compact), OOXML (.pptx and .docx)  
Optional: PDF (Trace & Smooth), PDF (Encrypted), PDF/XPS (Digital Signature), PDF (Reader Extensions)

### Fax Specifications

**Maximum Number of Connection Lines:** 4

#### Modem Speed

Super G3: 33.6 Kbps  
G3: 14.4 Kbps

**Compression Method:** MH, MR, MMR, JBIG

**Sending/Recording Size:** Statement-R to 11" x 17"

### Store Specifications

#### Mail Box (Number supported)

100 User Inboxes, 1 Memory RX Inbox, 50 Confidential Fax Inboxes

#### Advanced Box

Available: Approx. 15 GB (Standard HDD)  
Disk Space: Approx. 629 GB (1 TB HDD)  
Communication  
Protocol: SMB or WebDAV  
Supported  
Client PC: Windows (Windows 2000/XP/7/8/Windows Vista)

#### Memory Media

Standard: USB Memory  
Optional: SD, SDHC, CompactFlash, Memory Stick, Microdrive

### Security Specifications

#### Standard

Department ID Management, Single Sign-On H, Access Management System (Device and Function Level Log-in), Secure Print, Trusted Platform Module, User Access Control of Advanced Box, Mail Box Password Protection, IPv6, Restricting Features (Restricting the Send Function, Restricting New Addresses on Address Book), SSL Encrypted Communication, SNMPv1/v3, MAC/IP Address Filtering, SMTP Authentication, POP Authentication before SMTP, HDD Erase (Up to 3x), HDD Initialize (Up to 9x), HDD Lock, IPsec, Adobe LiveCycle® Rights Management ES2.5 Integration

### Optional Accessories

#### Paper Supply Options

##### Paper Deck Unit-C1

Paper Capacity: 3,500 Sheets [20 lb. Bond (80 g/m<sup>2</sup>)]  
Acceptable  
Paper Weight: 14 lb. Bond to 80 lb. Cover (52 to 220 g/m<sup>2</sup>)  
Acceptable  
Paper Size: Letter  
Acceptable  
Paper Type: Thin, Plain, Heavy, Color, Recycled, Pre-Punched  
Dimensions  
22-1/2" x 12-3/4" x 23"  
(H x W x D): (570 mm x 323 mm x 583 mm)

##### POD Deck Lite-A1

Paper Capacity: 3,500 Sheets [20 lb. Bond (80 g/m<sup>2</sup>)]  
Acceptable  
Paper Weight: 14 lb. Bond to 110 lb. Cover (52 to 300 g/m<sup>2</sup>)  
Acceptable  
Paper Size: 13" x 19", 12-5/8" x 17-11/16", 12" x 18", 11" x 17", Legal, Letter, Letter-R  
Acceptable  
Paper Type: Thin, Plain, Heavy, Color, Recycled, Pre-Punched, Transparency, Labels, Bond, Letterhead, Textured, Coated  
Dimensions  
22-1/2" x 23-5/8" x 24-1/2"  
(H x W x D): (570 mm x 601 mm x 621 mm)

##### Multi-Drawer Paper Deck-A1

Paper Capacity: 6,000 Sheets [20 lb. Bond (80 g/m<sup>2</sup>)]  
Number of  
Drawers: 3 (2,000 Sheets each)  
Acceptable  
Paper Weight: 14 lb. Bond to 110 lb. Cover (52 to 300 g/m<sup>2</sup>)  
Acceptable  
Paper Size: 13" x 19", 12-5/8" x 17-11/16", 12" x 18", 11" x 17", Legal, Letter, Letter-R, Executive, Custom Size (5-1/2" x 7-1/8" to 13" x 19-1/4")  
Acceptable  
Paper Type: Thin, Plain, Heavy, Color, Recycled, Pre-Punched, Transparency, Labels, Bond, Letterhead, Tab, Textured, Coated  
Dimensions  
41" x 37-3/8" x 31-3/8"  
(H x W x D): (1040 mm x 950 mm x 797 mm)

### Output Options

#### Staple Finisher-K1/Booklet Finisher-K1

Number of Trays: 3  
Total Output  
Capacity:  
4,250 Sheets (Letter)  
**Tray A:** 1,500 Sheets (Letter, Executive, Statement-R), 750 Sheets (13" x 19", 12-5/8" x 17-11/16", 12" x 18", 11" x 17", Legal, Letter-R)  
**Tray B:** 250 Sheets (Letter, Statement-R), 125 Sheets (11" x 17", Legal, Letter-R, Executive), 30 Sheets (13" x 19", 12-5/8" x 17-11/16", 12" x 18")  
**Tray C:** 2,500 Sheets (Letter), 1,500 Sheets (Executive, Statement-R), 750 Sheets (13" x 19", 12-5/8" x 17-11/16", 12" x 18", 11" x 17", Legal, Letter-R)

#### Paper Weight

Type: Refer to Main Unit

#### Staple Positions: Corner/Double Stapling:

11" x 17", Legal, Letter, Letter-R, Executive  
**Saddle-Stitch:**<sup>▲</sup>  
13" x 19", 12-5/8" x 17-11/16", 12" x 18", 11" x 17", Legal, Letter-R, Custom Size [8-1/4" x 11" to 13" x 19-1/4" (210.0 mm x 279.3 mm to 330.2 mm x 487.7 mm)]

**Optional Accessories** (continued)

**Output Options** (continued)

Maximum Stapling Capacity: **Letter and Executive:**  
100 Sheets [20 lb. Bond (80 g/m<sup>2</sup>) or up to 1/2" (11 mm) for heavier paper  
**11" x 17", Legal, and Letter-R:**  
50 Sheets [20 lb. Bond (80 g/m<sup>2</sup>) or up to 1/4" (5.5 mm) for heavier paper

Maximum Saddle-Stitch Capacity: 20 Sheets [21 lb. Bond (81 g/m<sup>2</sup>), including 1 Cover Sheet up to 110 lb. Cover (300 g/m<sup>2</sup>)

Dimensions (H x W x D): **Booklet Finisher:**  
41" x 30-1/4" (35-1/4"\*\*) x 30-1/8" (1040 mm x 767 mm (896 mm\*\*)) x 765 mm  
**Staple Finisher:**  
41" x 25-3/4" (30-3/4"\*\*) x 30-1/8" [1040 mm x 654 mm (782 mm\*\*) x 765 mm]

**Puncher Unit-BF1\***

Acceptable Punch Paper Weight: 14 lb. Bond to 140 lb. Index (52 to 256 g/m<sup>2</sup>)

Acceptable Punch Paper Type: Thin, Plain, Heavy, Color, Recycled, Bond, Letterhead, Tab, Textured, Coated

Acceptable Punch Paper Size: 11" x 17", Legal, Letter, Letter-R, Executive

Punch Type: 2 Holes (Legal, Letter-R)  
3 Holes (11" x 17", Letter, Executive)

**Inner Booklet Trimmer-A1\*\***

Trimming Method: Face Trim

Trim Thickness: 40 Sheets (2-20 mm)

Waste Tray Capacity: Approx. 1,500 Sheets of trimmed strip [width 3/4" (20 mm), Letter, 20 lb. Bond (80 g/m<sup>2</sup>)]

Acceptable Paper Weight: 16 lb. Bond to 110 lb. Cover (60 to 300 g/m<sup>2</sup>)

Acceptable Paper Type: Thin, Plain, Heavy, Color, Recycled, Bond, Letterhead, Textured, Coated

**Document Insertion Unit-H1\*\*\***

Number of Trays: 2

Acceptable Paper Weight: 14 lb. Bond to 110 lb. Cover (52 to 300 g/m<sup>2</sup>)

Acceptable Paper Type: Thin, Plain, Heavy, Color, Recycled, Pre-Punched, Tracing, Bond, Letterhead, Tab, Textured, Coated

Acceptable Paper Sizes: 13" x 19", 12-5/8" x 17-11/16", 12" x 18", 11" x 17", Legal, Letter, Letter-R, Executive, Custom Size (7-1/8" x 7-1/8" to 13" x 19-1/4")

Dimensions (H x W x D): 55-3/8" x 29-3/8" x 31-1/4" (1407 mm x 746 mm x 793 mm)

**Professional Puncher-C1/Professional Puncher Integration Unit-B1\*\*\***

Acceptable Punch Paper Weight: **Letter (3-hole, 5-hole, Velo Bind 11-hole, Plastic Comb 19-hole, Twin Loop 21/32-hole, Color Coil 44-hole):**  
20 lb. Bond to 80 lb. Cover (75 to 216 g/m<sup>2</sup>)  
**Letter (ProClick 32-hole):**  
20 lb. Bond to 65 lb. Cover (75 to 176 g/m<sup>2</sup>)

Acceptable Punch Paper Type: Thin, Plain, Heavy, Color, Recycled, Tab, Coated

Acceptable Punch Paper Size: Letter

Punch Pattern Die Sets (optional): Plastic Comb (19-hole), Twin Loop (21/32-hole), Color Coil (44-hole), Velo Bind (11-hole), Loose Leaf (3/5-hole), ProClick (32-hole)

Dimensions (H x W x D): **Professional Puncher-C1:**  
41" x 12" x 31-1/4" (1040 mm x 305 mm x 792 mm)  
**Professional Puncher Integration Unit-B1:**  
41" x 9-7/8" x 31-1/4" (1040 mm x 250 mm x 792 mm)

**Paper Folding Unit-G1\*\*\***

Folding Type: Z-Fold, C-Fold, Accordion Z-Fold, Double-Parallel Fold, Half-Fold

Acceptable Paper Weight: **Z-Fold, C-Fold, Accordion Z-Fold, Half-Fold:**  
14 lb. Bond to 28 lb. Bond (52 to 105 g/m<sup>2</sup>)  
**Double-Parallel Fold:**  
14 lb. Bond to 24 lb. Bond (52 to 90 g/m<sup>2</sup>)

Acceptable Paper Type: Thin, Plain, Color, Recycled, Bond

Acceptable Paper Sizes: **Z-Fold:**  
Letter-R, Legal, 11" x 17"  
**C-Fold, Accordion Z-Fold, Half-Fold:**  
Letter-R  
**Double-Parallel Fold:**  
Letter-R, Legal

Dimensions (H x W x D): 46-7/8" x 13-1/4" x 31-1/4" (1190 mm x 336 mm x 793 mm)

**Additional Print Controller Options**

**imagePASS-A2 Embler**

Type: Embedded

Processor: Intel® Pentium® Processor E5300 2.6 GHz

System: Fiery® System 10e

PDL Support: Adobe PS 3, PCL 5c/6

Print Resolution: 1200 x 1200 dpi  
2400 dpi Equivalent x 600 dpi

Memory: 2 GB (Standard/Maximum)

HDD: 160 GB

Interface (to LAN): 10Base-T/100Base-TX/1000Base-T

Dimensions (H x W x D): 11-3/5" x 14-2/5" x 3-2/3" (295 mm x 366 mm x 93 mm)

Utility Software: imagePASS-A2 Driver, Command WorkStation® 5, Remote Scan 5.3, Web Tools

Standard Features: Hot Folder, Secure Erase, Paper Catalog, Virtual Printers

Options: SeeQuence Suite, SeeQuence Impose, SeeQuence Compose, Image Enhance Visual Editor, X-Rite Eye-One

**ColorPASS-GX400 Controller**

Type: External

Processor: Intel® Core™ i5-660 Processor 3.33 GHz

System: Fiery® System 10

PDL Support: Adobe PS 3

Print Resolution: 1200 x 1200 dpi  
2400 dpi Equivalent x 600 dpi

Memory: 2 GB (Standard/Maximum)

HDD: 500 GB

Interface (to LAN): 10Base-T/100Base-TX/1000Base-T

Dimensions (H x W x D): 19-15" x 8-1/2" x 19" (485 mm x 215 mm x 483 mm)

Utility Software: ColorPASS GX-400 Driver, Command WorkStation® 5, Remote Scan 5.3, Web Tools

Standard Features: Hot Folder, Secure Erase, Paper Catalog, Virtual Printers, Fiery Graphics Arts Package, Image Enhance Visual Editor, VDP Enhancement

Options: SeeQuence Suite, SeeQuence Impose, SeeQuence Compose, Removable Hard Disk Drive, Integration Interface and Stand (19" display, keyboard, mouse, and furniture stand), X-Rite Eye-One

\* If "Quick Startup Settings for Main Power" is set to ON, it takes 7 seconds until the key operation on the touch-panel display is available after turning on the main power.

\*\* To the right edge of the Upright Control Panel in the right-most position.

\*\*\* Including the toner bottle, Duplex Color Image Reader, and the Upright Control Panel.

† EPS can be printed directly only from Remote User Interface.

†† XPS cannot be printed directly from the Web Access software.

▲ Available with Booklet Finisher-K1.

▲▲ When the Auxiliary Tray is extended.

▲▲▲ Installs internally with Staple Finisher-K1 or Booklet Finisher-K1.

▲▲▲ Installs internally with Booklet Finisher-K1.

▲▲▲▲ Requires Staple Finisher-K1 or Booklet Finisher-K1.

NOTE: Some accessories require additional equipment or may be prerequisites for other options. Some accessories cannot be installed simultaneously. Check with your Canon Authorized Dealer for details.

For detailed specifications and a comprehensive list of optional accessories, see the imageRUNNER ADVANCE C9200 PRO Series Product Specifications document.

Learn more about the ENERGY STAR® program at [www.usa.canon.com/energystar](http://www.usa.canon.com/energystar).



1-800-OK-CANON  
[www.usa.canon.com](http://www.usa.canon.com)

Canon U.S.A., Inc.  
One Canon Park  
Melville, NY 11747

As an ENERGY STAR® Partner, Canon U.S.A., Inc. has qualified these models as meeting the ENERGY STAR energy efficiency criteria through an EPA recognized certification body. ENERGY STAR and the ENERGY STAR mark are registered U.S. marks. Canon, imageRUNNER, imagePASS, MEAP, and the GENUINE logo are registered trademarks of Canon Inc. in the United States and may also be registered trademarks or trademarks in other countries. imageWARE is a registered trademark of Canon U.S.A., Inc. in the United States and is a trademark of Canon Inc. in certain other countries. All other referenced product names and marks are trademarks of their respective owners. Products are not manufactured for outdoor use; depiction of such is for artistic purposes only. Products shown with optional accessories. Additional information on software requirements and compatibility is available at [usa.canon.com](http://usa.canon.com). All printer output images are simulated. Canon U.S.A. does not provide legal counsel or regulatory compliance consultancy, including without limitations, Sarbanes-Oxley, HIPAA, GLBA, Check 21 or the USA Patriot Act. Each customer must have its own qualified counsel determine the advisability of a particular solution as it relates to regulatory and statutory compliance. Specifications and availability are subject to change without notice. Not responsible for typographical errors.  
©2014 Canon U.S.A., Inc. All rights reserved.

Federal Law prohibits copying of certain documents. Violators may be subject to penalties. We suggest that you check with your own legal counsel. Canon U.S.A., Inc. and Canon Canada, Inc. intend to cooperate with Law Enforcement Agencies in connection with claims of unauthorized copying.

