

imageCLASS

MF236n / MF232w

Multifunction Laser Printers

REVOLUTIONIZE TODAY'S WORKSPACE

- All-in-one functionality allows you to **print, scan, copy,** and **fax** (MF236n only) with ease.
- **Easily connect** your compatible mobile devices without a router using Wi-Fi® Direct Connection.* (MF232w only)
- Print at speeds of up to **24 pages per minute,**** with your first print in your hands in **6 seconds** or less.***
- Print on-the-go with **Canon PRINT Business,† Apple® AirPrint®,†† Mopria™ Print Service,†††** and **Google Cloud Print™.^**
- Navigate through all the features with the user-friendly, **tiltable, black-and-white touch LCD panel.** (MF236n only)
- Paper capacity allows for **250 sheets** in the standard cassette and one sheet in the multipurpose tray.**
- Low energy consumption; uses **2 W** or less in **Energy Saver Mode.**
- The **Quiet Mode** feature helps reduce the noise in your workplace.

MF232w



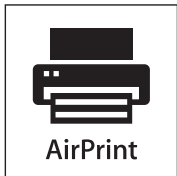
MF236n



ADVANCED TECHNOLOGIES FOR YOUR HOME OR OFFICE

Print On-The-Go

Print a variety of file types, Web pages, and images on-the-go with **Canon PRINT Business**,[†] **Apple AirPrint**,^{††} **Mopria Print Service**,^{†††} and **Google Cloud Print**[▲] using your compatible mobile device. You can also scan hard-copy originals using Canon PRINT Business. For more information on Canon supported apps and compatibility, please visit <https://www.usa.canon.com/mobile-app>.



Service and Support

At its foundation, Canon has an uncompromising dedication to product reliability, service, and support. From cutting-edge technology to industry-leading response times, Canon takes pride in delivering complete customer satisfaction. Canon's award-winning, 100% U.S.-based, friendly, and knowledgeable Customer Service Team provides expert assistance for every level of experience.

GENUINE Toner

Canon's GENUINE toner is designed to help improve image processing and precise character printing as well as overall image quality. The Single-Cartridge System combines the toner and drum into the same unit, which means you only have one consumable to replace. Designed by Canon engineers and manufactured in Canon facilities, Canon GENUINE supplies are developed using precise specifications, so you can be confident that your Canon device can produce high-quality results consistently. The MF230 Series offers standard Cartridge 137 Black (2,400-page yield).

Environmentally Conscious

Help decrease power consumption and energy costs with Canon's efficient Energy Saver mode. In this mode, the MF230 Series uses 2 W or less of energy and meets ENERGY STAR[®] guidelines.

Generation Green

The MF230 Series is part of Canon's Generation Green Program, which highlights the company's commitment to sustainability. Learn more at www.usa.canon.com/green.

Touch LCD Panel (MF236n only)

The intuitive, tiltable touch LCD panel allows you to easily navigate through the menu. The wide-screen display is user friendly, helping you to complete tasks more quickly.



MF236n

* Wi-Fi[®] is a registered trademark of the Wi-Fi Alliance[®]. The Wi-Fi CERTIFIED[™] Logo is a certification mark of the Wi-Fi Alliance[®].

** Print speed is based on internal testing. Print speed may vary depending on the number of copies selected as well as on the settings for size, type, and orientation of paper.

*** May vary depending on the output environment.

[†] Canon PRINT Business is a free app available on the App Store[®] and Google Play[™] Store. For more information, including compatibility, please visit <https://www.usa.canon.com/mobile-app>. Users of Canon Mobile Printing can simply update the app to use Canon PRINT Business; users who have installed Canon Mobile Scanning for Business should install Canon PRINT Business on their compatible device. After Canon PRINT Business is installed, users can re-register their Canon Mobile Scanning for Business device list and local documents.

^{††} Apple AirPrint functionality requires an iPad, iPad Mini, iPad 2, the new iPad, iPhone 3GS or later, or iPod touch 3rd generation or later device running iOS 7.0 - 8.0 or later, and an AirPrint-enabled printer connected to the same network as your iOS device. A printer connected to the USB port of your Mac, PC, AirPort Base Station, or Time Capsule is not supported.

^{†††} Mopria Print Service, available free at the Google Play Store, requires a compatible Android 4.0 - 5.0 smartphone or tablet. The printer must be either wirelessly connected to the network router or with an Ethernet cable. The mobile device and printer must be connected to the same network.

[▲] Google Cloud Print requires an Internet connection and Google Account. Printer firmware update may be necessary for Google Cloud Print[™] function. Certain exceptions may apply. A PC running Windows[®] XP or later or a Mac[®] running OS 10.4.11 or later and USB cable are required to perform firmware update.

^{▲▲} Based on 20 lb. Bond paper.

FEATURES	imageCLASS MF236n	imageCLASSMF232w
BASIC SPECIFICATIONS		
Functions	Print/Scan/Copy/Fax	Print/Scan/Copy
Replaces	MF216n	MF212w
Print Speeds	Up to 24 ppm** (1-Sided, Plain Paper, Letter)	
Connectivity	USB Device 2.0 Hi-Speed, 10/100/Base-T Ethernet (Network)	USB Device 2.0 Hi-Speed, 10/100/Base-T Ethernet (Network), Wi-Fi 802.11 b/g/n*
Operating Systems	Windows® 10/8.1/8/7, Windows Vista®, Windows Server® 2012 R2/2012/2008 R2/2008/2003 R2/2003; Mac OS 10.5.8 and Up; Drivers Available For Download From www.usa.canon.com/support	
PAPER HANDLING		
Standard Cassette	Up to 250-Sheets,*** 16 to 43 lb. Bond; Letter, Legal, Statement, Executive	
Multipurpose Tray	1 Sheet,*** 16 to 43 lb. Bond; Letter, Legal, Statement, Executive	
Automatic Document Feeder	Up to 35-Sheets	N/A
Output Tray	100 Sheets (Face-Down)	
Duplex	N/A	
Monthly Duty Cycle	Up to 15,000 Pages	
RMPV (Recommended Monthly Print Volume)	500-2,000 Pages	
Security	IP/MAC address filtering, IEEE802.1x, SNMPv3, HTTPS/IPPS	
PRINTER SPECIFICATIONS		
First-Print Time	6 Seconds or Less (Letter)***	
Printer Language	UFR II LT (Host-Based)	
Print Resolution	Up to 600 x 600 dpi	
Print Features	Watermark, Page Composer, Toner Saver	
Print Memory	256 MB (Shared)	
Mobile Print	Canon PRINT Business,† Apple® AirPrint®,‡ Mopria™ Print Service,‡‡‡ Google Cloud Print™*▲	
COPIER SPECIFICATIONS		
First-Copy Time	9 Seconds or Less (Letter)****	
Copy Resolution	Up to 600 x 600 dpi	
Halftones	256 Levels	
Max. Number of Copies	Up to 999 Copies	
Copy Features	Zoom 25%-400%, 2-on-1, 4-on-1, ID Card Copy, Memory Sort	
Copy Memory	256 MB (Shared)	
SCANNER SPECIFICATIONS		
Scan Type	Color Contact Image Sensor (CIS); 24-bit Color Depth; TWAIN/WIA/ICA Compatible	
Scan Speed	Black/Color: Approx. 21/15 Seconds Per Sheet (Simplex Automatic Document Feeder)*	N/A
Scan Resolution	Up to 600 x 600 dpi (Optical)	
Scan Features	Push (Scan-to-PC) and Pull Scan	
FAX SPECIFICATIONS		
Modem Speed	Up to 33.6 Kbps (Super G3)**	N/A
Fax Resolution	200 x 400 dpi (Super Fine)	
Fax Memory	Up to 256-Sheets***	
Speed Dialing	4 One-Touch Speed Dials (Favorites); Up to 100 Coded Dials	
Group Dialing	Up to 103 Destinations	
Sequential Broadcasting	Up to 114 Destinations	
PC Fax	Yes (TX only)	
Fax Features	Fax-Forwarding, Dual Access, Remote Reception, PC Fax (TX only), Distinctive Ring Pattern Detection, Error Correction Mode, Auto Redial, Fax Activity/Result Management Reports	
GENERAL SPECIFICATIONS		
Dimensions	15.4" (W) x 14.6" (D) x 14.2" (H)	15.4" (W) x 14.6" (D) x 12.3" (H)
Weight (without/with cartridge)	25.4/26.7 lb.	22.5/23.8 lb.
Package Weight	37.5 lb.	
Warranty	Warranty: One-Year Limited Exchange/Carry-in* (Extended Warranty Available)	
ENVIRONMENTAL SPECIFICATIONS		
Typical Energy Consumption (TEC)	0.7 kWh	
Power Consumption	Operation: 420 W; Standby: 5.1 W Energy Saver: 1.1 W (USB), 1.3 W (Wired)	Operation: 420 W; Standby: 4 W Energy Saver: 1.1 W (USB), 1.3 W (Wired), 1.8 W (Wireless)
Noise Level**	Operation: 51 dB (Sound Pressure); 65 dB (Sound Power) Standby: Inaudible (Sound Pressure); 43 dB or Less (Sound Power)	Operation: 51 dB (Sound Pressure); 66 dB (Sound Power) Standby: Inaudible (Sound Pressure); 43 dB or Less (Sound Power)
ENERGY STAR®	Yes	
EPEAT	Silver	
WHAT COMES IN THE BOX		
MF230 Series Product, Starter Cartridge I37 (Starter Yield: 1,700 Pages; ISO/IEC Standard), Power Cord (USB not included), Starter Guide, User Software DVD-ROM, Warranty Card, Canon Drivers, Phone Cable (MF236n only)		

** Print speed is based on internal testing. Print speed may vary depending on the number of copies selected as well as on the settings for size, type, and orientation of paper.

*** May vary depending on the output environment.

▲ Wireless printing requires a working network with wireless 802.11b/g or 802.11n capability. Wireless performance may vary based on terrain/distance between printer and wireless network clients.

**** Letter-sized, after being restored from Energy Saver mode.

† Canon PRINT Business is a free app available on the App Store® and Google Play™ Store. For more information, including compatibility, please visit <https://www.usa.canon.com/mobile-app>. Users of Canon Mobile Printing can simply update the app to use Canon PRINT Business; users who have installed Canon Mobile Scanning for Business should install Canon PRINT Business on their compatible device. After Canon PRINT Business is installed, users can re-register their Canon Mobile Scanning for Business device list and local documents.

‡‡ Apple AirPrint functionality requires an iPad, iPad Mini, iPad 2, the new iPad, iPhone 3GS or later, or iPod touch 3rd generation or later device running iOS 7.0 - 8.0 or later, and an AirPrint-enabled printer connected to the same network as your iOS device. A printer connected to the USB port of your Mac, PC, AirPort Base Station, or Time Capsule is not supported.

‡‡‡ Mopria Print Service, available free at the Google Play Store, requires a compatible Android 4.0 - 5.0 smartphone or tablet. The printer must be either wirelessly connected to the network router or with an Ethernet cable. The mobile device and printer must be connected to the same network.

▲ Google Cloud Print requires an Internet connection and Google Account. Printer firmware update may be necessary for Google Cloud Print™ function. Certain exceptions may apply. A PC running Windows XP or later or a Mac running OS 10.4.11 or later and USB cable are required to perform firmware update.

▲▲▲ Based on 20 lb. Bond paper.

● Based on Letter-sized scanning at 300 x 300 dpi.

● The Public Switched Telephone Network currently supports fax modem speeds of 28.8 Kbps or lower, depending on telephone line conditions. Sending and receiving fax machines need to conform to ITU-T #1 guidelines.

●●● Based on ITU-T #1 Chart (standard mode).

◆ Warranty program is subject to certain conditions and restrictions. See warranty card for details.

◆◆ Declared noise emission in accordance with ISO 9296.

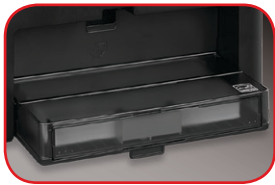
imageCLASS

MF236n / MF232w

35-Sheet Automatic Document Feeder



Easy, Front-Loading
Single-Cartridge System



Standard
250-Sheet Cassette



MF236n

Tiltable Touch LCD Panel



One-Sheet
Multipurpose Tray



imageCLASS MF230 Series and Accessories

imageCLASS MF236n	1418C036
imageCLASS MF232w	1418C048
Cartridge 137: Full-Yield; 2,400 Sheets ISO/IEC	9435B001
Tier 1E One-Year eCarePAK	5707B038
Tier 1E Two-Year eCarePAK	5707B039
Tier 1E Three-Year eCarePAK	5707B040
Tier 1E Four-Year eCarePAK	5707B041

USA.CANON.COM/IMAGECLASS



As an ENERGY STAR partner, Canon U.S.A., Inc. has certified these models as meeting the ENERGY STAR energy efficiency criteria through an EPA recognized certification body. ENERGY STAR and the ENERGY STAR mark are registered U.S. marks. Android is a trademark of Google Inc. App Store is a service mark of Apple Inc. iPhone, iPad Air, iPad, iPad mini, AirPrint and AirPrint logo, are trademarks of Apple Inc., registered in the U.S. and other countries. iOS is a trademark or registered trademark of Cisco in the United States and other countries and is used under license. Canon, imageCLASS, GENUINE, and the Super G3 logo are registered trademarks of Canon Inc. in the United States and may also be registered trademarks or trademarks in other countries. All other referenced product names and marks are trademarks of their respective owners. Specifications and availability subject to change without notice. Not responsible for typographical errors.
©2016 Canon U.S.A., Inc. All rights reserved.

0202W313
0916-MF230SERIES-5M-PSP

