

Canon

 **imageRUNNER**
ADVANCE

C2230 / C2225

**Office
Solutions**

multifunction printer

compact design

color/black and white



Simply advanced.

Designed for

**Busy workgroups that
demand efficient workflow
in a compact space**

Standard Features

Copy/Print/Send

Color/Black and White

Print up to 30 ppm (BW/Color); Letter

Up to 12" x 18"

17 lb. Bond to 80 lb. Cover

2,270-sheet maximum capacity

Scan up to 51 ipm

Flexible in-line finishing options

Scan directly to Microsoft® PowerPoint®
and Searchable PDF formats

Hard Disk Drive Lock and Erase, IPsec



Simply advanced.

The imageRUNNER ADVANCE C2200 Series delivers efficient workflow in a small footprint to help workgroups, branch offices, and small businesses work faster and smarter. Business processes are seamlessly integrated, and a streamlined user experience enables high performance and productivity. From every point of view, these models are simply advanced.



People-Centric

An exceptionally intuitive, simple-to-use interface puts access to all functions right at your fingertips, whether at the device or at your desktop.



Collaborative

Work better together—your teams will have the ability to access and leverage the capabilities of other connected imageRUNNER ADVANCE devices on your network.



Mobile

Even on the go, you're in control. Print from a laptop, tablet, or smartphone to an imageRUNNER ADVANCE system.



Cloud-Enabled

A touch of a button on the user interface lets you access, scan to, or print directly from certain cloud applications.



Security

Multilayered solutions safeguard confidential information and, with certain options, support security compliance.



Connected

Advanced technology and expansive enterprise applications work seamlessly with your device to deliver exceptional results.



User-centric design. Easy operation.

The imageRUNNER ADVANCE C2200 Series allows each user to accomplish tasks quickly and effectively. And, these systems are readily customizable, delivering enhanced productivity to everyday workflow.

A smart, intuitive interface

The imageRUNNER ADVANCE C2200 Series is designed with you in mind. With an impressive range of customizable, simple-to-use, streamlined features, the imageRUNNER ADVANCE platform lets users work smarter and faster. The 7" full-color, tiltable, high-resolution TFT screen provides exceptional clarity.



Two menus

Press the Main Menu key for instant access to business-ready functions. Use the Quick Menu to power productivity by combining and accessing routine tasks at the touch of a button.



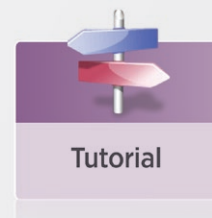
Custom options

Organize the on-screen buttons to fit the way you work by determining their number, size, and layout. Even display your own logo or special graphic as a screen background.



Web-ready

View Web pages directly from the device control panel. Just enter a URL to browse pages. Easily output Web pages and online PDFs.



Handy tutorials

Quickly access simple step-by-step instructions right on the user interface.



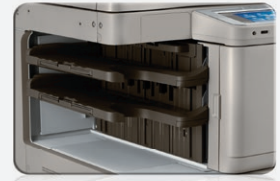
Easy Toner Access



One-button Paper Access



USB Keyboard



Internal Finisher

Designed for ease

Even with its compact size, the imageRUNNER ADVANCE C2200 Series is big on ease-of-use features, including a tiltable screen, quick-to-replace toner bottles, paper drawers that spring open at the touch of a button, and an optional USB keyboard.

Designed to fit

This compact design readily fits into small spaces, thanks to innovations such as Canon's space-saving vertical toner transfer technology and the availability of an internal staple finisher that gives you professional-quality output without adding to the footprint.



Engineered for adaptability

These intelligent systems help you achieve your goals of today *and* tomorrow. With the ability to smoothly integrate hardware and software solutions, the imageRUNNER ADVANCE C2200 Series lets you personalize applications to meet your organization's changing needs. And it's highly flexible, so you can easily add to, or update, your system with the quick deployment of settings and applications across your enterprise.



Walk-up convenience

Easily scan to, or print from, a USB thumb drive. Browse folders and rename files. Even expand connectivity options to include memory media, such as an SD card or CompactFlash card.



A familiar experience

Users will be quick to master the imageRUNNER ADVANCE C2200 Series models—or any other imageRUNNER ADVANCE device. In addition to their easy-to-use features, Canon builds in consistency across the line, with all models using the same print driver and a readily familiar user interface. And that means less burden on IT resources as well.



Optimize connectivity. Leverage your fleet.

Compact yet powerful, the imageRUNNER ADVANCE C2200 Series is a highly effective digital communications center, integrating enterprise applications, connecting to the cloud, linking to other devices in your fleet, and giving you the freedom to work efficiently anywhere, anytime.

On the go

In an increasingly mobile world, people need the ability to work remotely while maintaining their productivity. Now Canon delivers advanced solutions that help to keep work flowing effortlessly from wherever you are.



Mobile devices

Print from, and scan to, your laptop, iPad® tablet, and iPhone® or BlackBerry® smartphone. Access an imageRUNNER ADVANCE device to retrieve your job.



Cloud portal

Gain quick access to certain cloud-based applications right from your imageRUNNER ADVANCE device. Access or send documents directly from the cloud.

Extensive Print Solutions

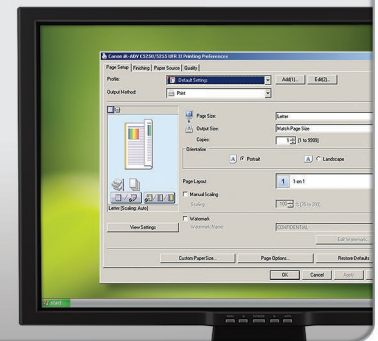
Print Options

Canon's proprietary high-speed UFR II print technology is standard with these models. Options, such as Adobe® PostScript® 3™ and PCL 5c/6, are also supported.

Control

Canon's Driver Configuration Tool allows you to set specific defaults and custom profiles.

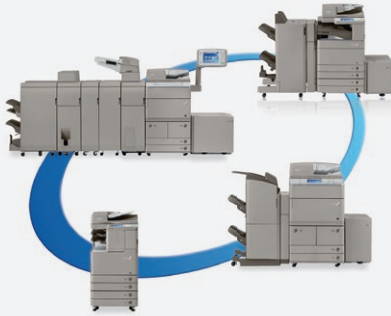
You can control costs and enhance security by implementing features such as allowing only black-and-white and/or secured printing.



Right from your PC

Enjoy even greater control and convenience right from your PC. Use the new imageRUNNER ADVANCE Quick Printing Tool to print, fax, preview, and convert files to PDFs, as well as monitor the status of your system—all without even opening an application. imageRUNNER ADVANCE Desktop lets you manage and prepare documents, combine multiple formats, preview files, and select the finishing functions.

Easy collaboration



Inter-device connectivity

The imageRUNNER ADVANCE C2200 Series lets you connect with other networked models for true fleet integration. This leverages features including file-sharing from the Advanced Box folders of other Canon imageRUNNER ADVANCE devices, accessing remote address books, and more.



Advanced Anywhere Print

This serverless solution lets you print to a connected imageRUNNER ADVANCE system that has Advanced Box functionality. Once you conveniently and securely log-in at any supported device, you can then view and retrieve your print job.



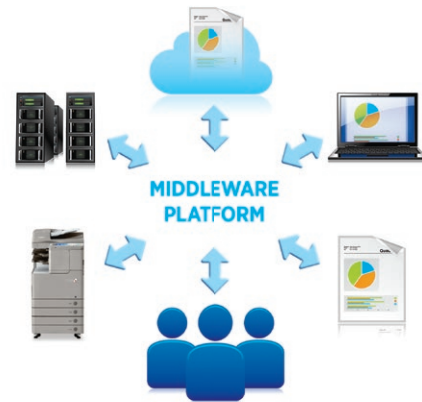
Enhanced fax capabilities

These models support up to two fax lines and have the ability to leverage the fax function of another imageRUNNER ADVANCE model on the same network. The Job Forwarding feature automatically routes incoming faxes to other systems, users, or destinations.



Scan, Store, Distribute

You can easily save, store, and access scanned documents from multiple locations, including external memory media or another networked location. And, you can distribute scanned documents to multiple destinations—including e-mail addresses, faxes, and network folders—all in a single step. Scan documents directly into Microsoft PowerPoint® or a Searchable PDF format, as well as High Compression PDF/XPS, Adobe PDF Reader Extensions, PDF/A, and Encrypted PDF.



Integrate your imaging with enterprise applications

A new middleware technology, based on Service Oriented Architecture (SOA), links enterprise applications, such as Oracle® and SAP®, with Customer Relationship Management (CRM) systems like Salesforce.com®, ECM system, and many others. You can also connect your document-intensive processes with these applications. The streamlined workflow automates complex business processes and offers easy access to information, saving both time and money.



Robust security. Centralized management.

In today's networked world, you need greater control over your resources and data. The imageRUNNER ADVANCE C2200 Series delivers just that with the ability to configure a system, safeguard information, and track resources, right at your fingertips.



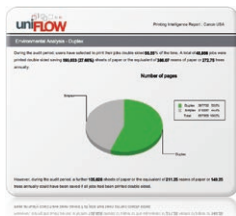
Powerful command

Canon's device management tools help keep you in charge at every step, right from your desktop or through the cloud. Easily install and replace devices, migrate settings and data to new ones, and distribute applications and settings across your network. Monitor a single device with the Remote User Interface, or an entire fleet with the imageWARE Enterprise Management Console, and even receive alerts when supplies or service are needed.



Safeguard data

From installation to retirement, this Series offers multilayered solutions to safeguard information and help support security compliance. HDD Erase, a standard feature, removes latent images after each task. A security chip with tamper-resistant hardware helps protect passwords and encryption keys. IPsec provides security for data as it traverses the network. Optional HDD Data Encryption helps protect information even after hard drive removal.



Maximize resources

These systems offer advanced tools to help you track, manage, and influence user behavior. Solutions, such as uniFLOW, analyze color output, encourage double-sided printing, and allocate costs by department, project, or client. Route jobs to the most cost-effective device, and get alerts when supplies are low.



Secure authentication

With the need to keep data secure, busy workgroups will appreciate the imageRUNNER ADVANCE Series' serverless print environment. Users can print from anywhere within the network to any supported device via log-in authentication. This helps prevent printed documents from being left unattended.

Security Features

Document Security

- Document Scan Lock and Tracking
- Adobe® LiveCycle® Rights Management ES2.5 Integration
- Encrypted Secured Print
- Watermark/Secure Watermark
- Copy Set Numbering
- Encrypted PDF
- Digital Signature PDF
- Fax Forwarding
- Fax Destination Confirmation

Mail Server Security

- POP Authentication before SMTP
- SMTP Authentication

Network Security

- IP/MAC Address Filtering – Port Filtering
- SSL Encryption
- Network Application On/Off
- USB Port On/Off
- Destination Restriction
- IPsec
- IEEE802.1X (Wire/Wireless)

Device Security

- IEEE2600.1 Certification*

Data Security

- HDD Lock
- Trusted Platform Module
- HDD Data Erase and Initialize
- HDD Data Erase Scheduler
- HDD Encryption
- Job Log Conceal
- Removable Hard Disk Drive

Logging/Auditing Security

- imageWARE Secure Audit Manager Authentication
- Department ID/Control Card Systems
- Device Level Log-in (SSO-H)
- Access Management System (AMS)
- Function Level Log-in via AMS
- Authorized Send
- Common Access Card (AA-CAC)
- Universal Login Manager

Note: Some features may be optional.

* Not available at time of launch.



Dependable operation. Impressive results.

Produce professional-quality documents quickly and easily. The imageRUNNER ADVANCE C2200 Series provides eye-catching quality in a compact footprint—all with the reliable performance you expect from Canon.



Standout results

The imageRUNNER ADVANCE C2200 Series models give you the ability to print high-quality documents in-house, regardless of the size of your operation. Proposals, reports, brochures, and contracts are stunning in brilliant color or crisp black and white. The booklet finisher option allows you to create high-quality folded and stitched documents. And the internal finisher provides up to 50-sheet stapling capability—without demanding additional floor space.



Lots of uptime

Canon incorporates its signature reliability into every imageRUNNER ADVANCE Series model. Status notifications keep you ahead of the game, and toner bottles are easy to access. The waste toner bottle is readily replaceable by the user, further minimizing downtime. If the correct paper for a job is unavailable, the system begins the next job without delay. And with access to the latest technology and simple, clear upgrades, you can power through your tasks, giving you more time to devote to other business areas.



Powerful operation

Accomplish multiple tasks concurrently with the speed your work demands. These models have two dedicated processors that work together to accomplish multiple tasks simultaneously. And Quick Startup mode minimizes start-up time, so devices start up promptly to keep you working with outstanding efficiency.

Targeted, integrated solutions

With its brilliant architecture, the imageRUNNER ADVANCE C2200 Series offers true personalization, allowing you to gather, organize, and disseminate information to meet your unique challenges. Canon's innovative MEAP® platform lets you develop custom solutions to meet specific workflow needs. And new levels of connector and link support enhance communication with existing systems as well as those you may acquire in the future.





Strong commitment. Eco-conscious solutions.

The imageRUNNER ADVANCE C2200 Series incorporates innovative, eco-conscious solutions that keep your business operating efficiently while helping to reduce your environmental footprint.



A responsible way to work

Canon knows that the world and the workplace need a greener workflow, and the imageRUNNER ADVANCE C2200 Series, registered in EPEAT®, delivers just that. Now you can seamlessly share and distribute digital documents and preview files to make changes prior to printing, helping to reduce the use of paper and toner. Print drivers are defaulted to duplex documents, encouraging two-sided printing to reduce waste. And with Secure Print, documents are sent to a device but not printed until a password is entered, contributing to a reduction in paper waste.



Eco-conscious design

Canon is making a difference through creative ecological thinking. These models employ certain components fabricated with recycled plastic from retired products. Canon's innovative green technologies also include bio-based plastic, a plant-derived compound that replaces certain petroleum-based plastic parts.

A clear strategy

Greater energy efficiency

From the inside out, the imageRUNNER ADVANCE C2200 Series is designed for high-energy efficiency and stellar performance. The combination of our fusing technologies and pQ toner helps lower overall energy consumption by minimizing power requirements and reducing energy use during warm-up and standby. With advanced technologies present in each model, the Series also meets ENERGY STAR® standards.



Reducing pollution

All suppliers are required to meet Canon's stringent Green Procurement policy and environmental terms. This helps the company exceed the toughest global standards set by the EU RoHS Directive, which restrict the use of certain hazardous substances.



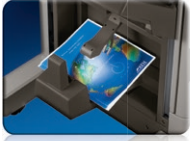
Reduction of CO₂ emissions

Through its Life Cycle Assessment (LCA) System, Canon has lowered CO₂ emissions by focusing on each stage of the product life cycle, including manufacturing, energy use, and logistics. These products are designed with less packaging to be the smallest and lightest in their class. They're intended to help make transportation more efficient.



Add options to boost productivity

Finishing Options



A Booklet Finisher-M1

- 2-tray, 3,000-sheet capacity
- Corner and double stapling up to 50 sheets
- Booklet-making up to 16 sheets



Inner Finisher-F1

- 750-sheet capacity*
- Corner and double stapling up to 50 sheets



Staple Finisher-M1

- 2-tray, 3,000-sheet capacity
- Corner and double stapling up to 50 sheets

Other Finishing Options

Inner 2-way Tray-F1

C Copy Tray-J1

Inner Finisher Additional Tray-A1



Paper Feeding Options

B Cassette Feeding Unit-AF1

- 550-sheet x 2-cassette capacity
- 17 lb. Bond to 80 lb. Cover
- Supports up to 12" x 18"



Envelope Feeder Attachment-D1

- 50-sheet capacity
- Supports COM10 No.10, Monarch, DL, ISO-C5

Other Paper Feeding Options

Cabinet Type-D

Printer Options**

PCL Printer Kit-AT1

PS Printer Kit-AT1

Direct Print Kit (for PDF/XPS)-H1

Security Options

Universal Send Security Feature Set-D1

Universal Send Digital User Signature Kit-C1

Encrypted Secure Print-D1

Secure Watermark-B1

Document Scan Lock Kit-B1

HDD Data Erase Scheduler

HDD Data Encryption Kit-C1

Removable HDD Kit-AE1

Accessibility Options

Remote Operators' Software Kit-B1

Voice Operation Kit-C2

Voice Guidance Kit-F2

Braille Label Kit-F1

ADF Access Handle-A1

* 350-sheet capacity when Additional Tray-A1 is attached.

** UFR II standard.

Note: For additional options and specifications, please refer to the back page.

Main Unit

Operation Panel: 7" WVGA Full-Color TFT Screen

Memory

Standard: 2GB RAM
Maximum: 2GB RAM

Hard Disk Drive

Standard: 80GB
Maximum: 80GB

Network Interface Connection

Standard: 10/100Base-TX/1000Base-TX
Optional: Wireless LAN (IEEE 802.1x via third-party adapter)

Other Interface

Standard: USB 2.0 (Host) x 2, USB 2.0 (Device)
Optional: Device Port [USB 2.0 (Host) x 2], Serial Interface Copy Control Interface

Copy/Print Speed (BW/Color, Letter)

C2230: Up to 30/30 ppm
C2225: Up to 25/25 ppm

First-Copy-Out Time (Letter)

BW: 5.9 Seconds, Color: 8.9 Seconds

Paper Sources (20 lb. Bond)

Standard: One 520-sheet Paper Cassette
One 550-sheet Paper Cassette
100-sheet Stack Bypass
Maximum: 2,270 Sheets

Output Paper Capacity (20 lb. Bond)

Standard: 250 Sheets (Inner Tray)
Maximum: 3,000 Sheets (w/Staple Finisher or Booklet Finisher)

Output Paper Sizes

Cassette 1: 11" x 17", Letter, Executive
Cassettes 2/3/4: 12" x 18", 11" x 17", Legal, Letter, Letter-R, Statement-R, Executive, Custom (5-1/2" x 7-1/8" to 12" x 15-3/8")
Bypass: 12" x 18", 11" x 17", Legal, Letter, Letter-R, Statement, Statement-R, Executive, Custom Size (3-7/8" x 5-1/2" to 12-5/8" x 18")
Other: Envelope Feeder Attachment (COM10 No.10, Options: Monarch, DL, ISO-C5),* Tab Feeding Attachment Kit*

Acceptable Paper Weights

Cassette 1: 17 lb. Bond to 32 lb. Bond (64 to 120g/m²)
Cassettes 2/3/4: 17 lb. Bond to 60 lb. Cover (64 to 163g/m²)
Bypass: 17 lb. Bond to 80 lb. Cover (64 to 220g/m²)

Warm-up Time

From Power On: 34 Seconds
From Sleep: 10 Seconds
Quick Startup Mode: 7 Seconds**

Power Requirements/Plug

120V AC, 60Hz, 7.5A/NEMA 5-15P

Dimensions (H x W x D)

36-1/2" x 22-1/4" x 26-3/4" (928mm x 565mm x 680mm)

Installation Space (W x D)

33-3/8" x 26-3/4" (846mm x 680mm)

Weight

Approx. 198 lb. (90kg)*

Toner (Estimated Yield @ 5% Coverage)

Black: 23,000 Images, Color (C,M,Y): 19,000 Images

Document Feeder

Scan Method

Duplex Automatic Document Feeder

Acceptable Originals

Paper Size: 11" x 17", Legal, Letter, Letter-R, Statement, or Statement-R

Scan Speed (BW/Color; Letter)

Simplex: Up to 51/51 ipm (300 dpi)/
Up to 30/30 ipm (600 dpi)
Duplex: Up to 19/19 ipm (300 dpi)/
Up to 13/13 ipm (600 dpi)

Paper Capacity (20 lb. Bond)

50 Sheets

Print Specifications

Engine Resolution: 1200 x 1200 dpi**

PDL Support

Standard: UFR II
Optional: PCL 5c, PCL 6, Adobe PS 3

Print Driver Supported OS

UFR II, PCL 5c/6, Adobe PS 3:
Windows* (XP/Windows Vista*/7/8), Windows Server (2003/2008/Windows 2000, Windows Terminal Servers, Microsoft* Clustering Server, Citrix, Macintosh* (OS X 10.2.8 or later, UFR II and PS 3 only), VMware, SAP (PS and PCL Only)

Direct Print Support

Standard: TIFF, JPEG
Optional: PDF, EPS,*** XPS*

Universal Send Specifications

Sending Method

E-Mail, I-Fax, File Server (FTP, SMB, WebDAV), Super G3 Fax (Opt.)

Communication Protocol

File: FTP (TCP/IP), SMB (TCP/IP), WebDAV
E-mail/I-Fax: SMTP, POP3, I-FAX (Simple, Full)

File Format

Standard: TIFF, JPEG, PDF, PDF (Compact), PDF (Searchable), PDF (Apply Policy), PDF (Optimize for Web), PDF/XPS (OCR), PDF/A-1b, XPS, XPS (Compact), OOXML (OCR) (.pptx)
Optional: PDF (Trace & Smooth), PDF (Encrypted), PDF/XPS (Digital Signature), PDF (Reader Extensions)

Fax Specifications

Maximum Number of Connection Lines: 2

Modem Speed

Super G3: 33.6 Kbps
G3: 14.4 Kbps

Compression Method: MH, MR, MMR, JBIG

Sending/Recording Size: Statement to 11" x 17"

Store Specifications

Memory Media

Standard: USB Memory
Optional: SD, SDHC, CompactFlash, Memory Stick, Microdrive

Security Specifications

Standard

Department ID Management, Single Sign On-H, Access Management System (Device and Function Level Log-in), Secured Print, Trusted Platform Module, IPV6, Restricting Features (Restricting the Send Function, Restricting New Addresses on Address Book), SSL Encrypted Communication, SNMPv1/v3, MAC/IP Address Port Filtering, SMTP Authentication, POP Authentication before SMTP, HDD Initialize (Up to 9x), HDD Erase (Up to 3x), HDD Lock, IPsec, Adobe LiveCycle* Rights Management ES2.5 Integration

* Can be set to Cassette 2 only. Can not install Envelope Feeder Attachment and Tab Feeding Attachment at same time.

** If "Quick Startup Settings for Main Power" is set to ON, it takes seven seconds until the key operation on the touch-panel display is available after turning on the main power.

† Includes consumables.

†† Print Speed will slow down with 1200 x 1200 dpi.

††† EPS can be printed directly only from Remote User Interface.

■ XPS cannot be printed directly from Web Access Software.

NOTE: Some accessories require additional equipment or may be prerequisites for other options. Some accessories cannot be installed simultaneously. Check with your Canon Authorized Dealer for details.

As an ENERGY STAR® Partner, Canon U.S.A., Inc. has determined that these products meet the ENERGY STAR guidelines for energy efficiency. ENERGY STAR and the ENERGY STAR mark are registered U.S. marks. CANON, IMAGERUNNER, MEAP, and the GENUINE logo are registered trademarks of Canon Inc. in the United States and may also be registered trademarks or trademarks in other countries. IMAGEWARE is a registered trademark of Canon U.S.A., Inc. in the United States and is a trademark of Canon Inc. in certain other countries. IMAGEANYWARE is a trademark of Canon. All other referenced product names and marks are trademarks of their respective owners and are hereby acknowledged. Specifications and availability subject to change without notice. Products are not manufactured for outdoor use; depiction of such is for artistic purposes only. Products shown with optional accessories. Additional information on software requirements and compatibility is available at usa.canon.com. Some items may not be available at this time; please check for availability. All printer output images are simulated. Canon U.S.A. does not provide legal counsel or regulatory compliance consultancy, including without limitations, Sarbanes-Oxley, HIPAA, GLBA, Check 21 or the USA Patriot Act. Each customer must have its own qualified counsel determine the advisability of a particular solution as it relates to regulatory and statutory compliance. ©2013 Canon U.S.A., Inc. All rights reserved.

Federal Law prohibits copying of certain documents. Violators may be subject to penalties. We suggest that you check with your own legal counsel. Canon U.S.A., Inc. and Canon Canada, Inc. intend to cooperate with Law Enforcement Agencies in connection with claims of unauthorized copying.

0171W352
0413R-C2200SRS-PDF-SP



Canon
image*ANYWARE*

1-800-OK-CANON
www.usa.canon.com

Canon U.S.A., Inc.
One Canon Park
Melville, NY 11747

