

### Printer Specifications

**Printer Type**  
Monochrome Laser

**Print Speed (default print mode: 2-sided)**  
Up to 17 ppm (2-sided, plain paper letter)\*  
Up to 35 ppm (1-sided, plain paper letter)\*

**First Print Time**  
Approx. 6 seconds (letter)

**Printer Language**  
UFR II LT (Host-based)  
[MF5950dw/MF5960dn]  
PCL5/XL (45 fonts) [MF5960dn only]  
PS 3 Emulation (45 fonts)  
[MF5960dn only]

**Print Resolution**  
Up to 600 x 600 dpi  
1200 x 600 dpi quality

**Maximum Print Size**  
Up to 8.5" x 14"

**Duplex Print**  
Yes

**Print Modes**  
Booklet, Poster, Watermark, Toner Saver, Page Composer

**Print Memory**  
256MB (shared)

**Direct Print From USB**  
Yes (JPEG, TIFF)

### Copier Specifications

**Copy Type**  
Monochrome Laser

**Copy Speed**  
Up to 35 cpm (letter)

**Duplex Copy Speed**  
Up to 17 cpm (letter)

**Copy Resolution**  
Up to 600 x 600 dpi

**Original Type**  
Text, Text/Photo, Text/Photo+, Photo

**Halftones**  
256 levels

**Warm-up Time**  
Approx. 11 seconds

**First Copy Time**  
Approx. 8 seconds<sup>1</sup>

**Recovery Time**  
Approx. 5 seconds

**Maximum Number of Copies**  
99 copies

**Duplex Copy/Bind Type**  
Yes, 1 to 2/Book, Calendar

**Reduction/Enlargement**  
25%, 50%, 64%, 78%/  
129%, 200%, 400%

**Zoom**  
25–400% in 1% increments

**Copy Size**  
Platen: Up to 8.5" x 11"  
ADF: 5.5" x 5" to 8.5" x 14"

**Copy Features**  
Memory Sort, 2 on 1, 4 on 1, ID Card Copy

**Copy Memory**  
256MB (shared)

### Fax Specifications

**Modem Speed**  
Up to 33.6 Kbps (Super G3)<sup>2</sup>

**Fax Resolution**  
Up to 400 x 400 dpi (ultra fine)

**Transmission Time**  
JBIG (approx. 3 seconds)

**Memory Capacity**  
Up to 512 sheets<sup>3</sup>

**Speed Dials**  
19 one-touch speed dials; 181 coded dials

**Group Dialing**  
199 destinations

**Sequential Broadcasting**  
Yes, up to 210 destinations

**Duplex Fax**  
Yes

**Receive Modes**  
Fax only, Manual, Answering, Fax/Tel Auto Switch

**Fax Features**  
Distinctive Ring Pattern Detection, Error Correction Mode, Remote RX, Dual Access, Auto Redial, Collate, Auto Fax Reduction

**Memory Backup**  
Yes, 1 hour

**Activity Reports**  
Yes, Activity Result & Activity Management

**PC Fax**  
Yes (sending only)

**Fax Forwarding**  
Yes (Fax → Fax, Email, SMB)

### Scanner Specifications

**Scan Type**  
Color Contact Image Sensor (CIS)

**Color Depth**  
24-bit

**Scan Resolution**  
Up to 600 x 600 dpi (optical)  
Up to 9600 x 9600 dpi (interpolated)

**Scan Size**  
Platen: Up to 8.5" x 11"  
ADF: 5.5" x 5" to 8.5" x 14"

**Duplex Scan**  
Yes

**Compatibility**  
TWAIN, WIA

**Output File Formats**  
Hi-Compression PDF, Searchable PDF<sup>4</sup>, PDF, JPEG, TIFF, BMP, PNG<sup>5</sup>

**Scan Features**  
Scan to USB Host 1.1 (Hi-Compression PDF, PDF, JPEG, TIFF), Rotate Image

**Pull Scan**  
Yes, USB & Network

**Push Scan (Scan to PC)**  
Yes, USB & Network

**Send Specifications**

**Scan to Email**  
Yes (Hi-Compression PDF, PDF)

**Scan to SMB**  
Yes (Hi-Compression PDF, PDF, JPEG, TIFF)

### Paper Handling Specifications

**Standard Paper Source(s)**  
250-sheet cassette<sup>6</sup> plus  
50-sheet multipurpose tray<sup>6</sup>

**Optional Paper Source(s)**  
500-sheet cassette<sup>6</sup>

**Document Feeder**  
50-sheet duplex<sup>6</sup>

**Paper Output**  
150 sheets (face down)

**Paper Weight**  
16 to 32 lb. bond (cassette)  
16 to 51 lb. bond (multipurpose tray)

**Media Sizes**  
Letter, Legal, A4, A5, B5, Statement, Executive

**Media Types**  
Plain Paper, Heavy Paper, Bond Paper, Labels, Small Documents (i.e. Index Card)

**Envelope Capacity**  
5 envelopes (multipurpose tray)

**Envelope Types**  
Com 10, Monarch, DL, C5, B5

### Connectivity & Software Specifications

**Standard Interface(s)**  
USB 2.0 Hi-Speed<sup>7</sup>, 10/100 Base-T Ethernet [MF5950dw/MF5960dn]  
IEEE 802.11 b/g/n (wireless)<sup>8</sup>  
[MF5950dw only]

**WiFi Access Mode**  
[MF5950dw only]  
Infrastructure Mode

**WiFi Authentication Methods**  
[MF5950dw only]  
Open System, Shared Key, WPA-PSK, WPA2-PSK

**WiFi Encryption Modes**  
[MF5950dw only]  
WEP (64/128-bit), TKIP, AES

**WPS Easy Setup Support Methods**  
[MF5950dw only]  
Push-button mode, PIN code mode

**USB Functions**  
Print, PC Fax, Scan

**Network Functions**  
Print, PC Fax, Scan

**Embedded Web Server (Remote UI)**  
Yes

**Web Browser Support for Remote UI**  
Microsoft Internet Explorer 6.0 or higher, Safari 3.2.1 or higher

**Print Protocols**  
LPD, RAW, WSD

**Supported Network Protocols**  
TCP/IP v.4, TCP/IP v.6 (print only)

**TCP/IP Set of Application Services**  
DHCP, BOOTP, RARP, ARP+PING, Auto IP, Bonjour, HTTP, SHTTP, NetBIOS

**Network Management Protocols**  
SNMP v.1, SNMP v.3<sup>9</sup>

**MIB**  
RFC1213 (MIB-II), RFC1514 (Host Resources MIB), RFC1759 (Printer MIB), Canon MIB

**Operating Systems**  
Windows® 7, Windows Server® 2008<sup>10</sup>, Windows Vista®, Windows Server 2003<sup>10</sup>, Windows XP/2000, Mac® OS X 10.4.9 & up, Linux<sup>11</sup> (print only)

**Cable Included**  
Power Cord, Phone Cable (USB not included)

**Bundled Software**  
Canon Drivers, MF ToolBox, Document Management & OCR Software

*Drivers available for download from [usa.canon.com](http://usa.canon.com)*

### Environmental Specifications

**Power Consumption**  
Maximum: Approx. 1100W  
Standby: Approx. 9W  
Energy Saver: Approx. 2.3W  
[MF5950dw/MF5960dn]  
(Approx. 3.0W by wireless connection)  
[MF5950dw only]

**Typical Energy Consumption (TEC)**  
1.4kWh

### General Specifications

**Dimensions**  
15.4" (W) x 18.6" (D) x 17.0" (H)

**Unit Weight (without/with cartridge)**  
Approx. 40.4 lbs./42.2 lbs.

**Package Weight**  
Approx. 50.7 lbs.

**Warranty**  
1 year limited exchange/carry-in warranty<sup>12</sup>  
(Extended warranty available)

**Cartridge 119**  
Yields approximately 2,100 pages based on ISO/IEC Standard

**Cartridge 119 II (Hi-Capacity)**  
Yields approximately 6,400 pages based on ISO/IEC Standard

**Cartridge Type**  
Single Cartridge System

**Department Counter**  
Yes

**LCD Display**  
5-row backlit LCD w/animation (fax installation, toner installation, paper jam)

**Duty Cycle**  
Up to 15,000 pages per month

**Department ID Management**  
Yes (up to 300 IDs)

**Additional Security**  
IP Filtering, MAC Address Filtering, Secure Print

**Languages**  
English, French, Spanish, Portuguese

**One-Touch Keys**  
Four (Secure Print, Eco Copy, Scan to PC1, Scan to PC2)

*Features and specifications are subject to change without notice.*

\* Print speed is based on internal testing. Print speed may vary depending on the number of copies selected, as well as on the settings for size, type and orientation of paper.

- Letter size, after being restored from Energy Saver mode.
- The Public Switched Telephone Network currently supports fax modem speeds of 28.8 Kbps or lower, depending on telephone line conditions. Sending and receiving fax machines need to conform to ITU-T v.34 guidelines.
- Based on ITU-T #1 Chart (standard mode).
- Combined with ToolBox feature. Hi-Compression PDF and Searchable PDF are Windows only.
- PNG supports Mac OS only.
- Based on 20 lb. bond paper.
- USB 2.0 Hi-Speed requires Windows® 7, Windows Vista®, Windows XP/2000 or Mac OS X operating systems. For Windows 98, Me and Mac OS X v. 10.2 to 10.2.6 operating systems, the printer/scanner will operate at USB 1.1 specifications.
- Wireless performance may vary based on terrain and distance between the printer and wireless network clients.
- SNMP v.3 supports Print and Send (Scan to Email/SMB) functions only.
- Server 2003, Server 2008 via network connection only.
- Mac® OS X 10.4.9 and up and Linux® OS (print only) compatibility to be announced; visit [usa.canon.com](http://usa.canon.com) for driver download availability.
- Warranty program is subject to certain conditions and restrictions. See the warranty card for details.



©2011 Canon U.S.A., Inc. Canon and imageCLASS are registered trademarks of Canon Inc. in the United States and may be registered trademarks or trademarks in other countries. imageANYWARE is a trademark of Canon U.S.A., Inc. The Super G3 logo is a trademark of Canon Inc. Microsoft, Windows, the Windows logo and Windows 7 are either trademarks or registered trademarks of Microsoft Corporation in the United States and/or other countries. Wi-Fi is a registered trademark of the Wi-Fi Alliance. The "Wi-Fi CERTIFIED" logo is a certification mark of the Wi-Fi Alliance. The Wi-Fi Protected Setup Mark is a mark of the Wi-Fi Alliance. All other product and brand names are trademarks of their respective owners. Specifications are subject to change without notice. As an ENERGY STAR partner, Canon U.S.A., Inc. has determined that this product meets the ENERGY STAR guidelines for energy efficiency. The limited warranty given by Canon U.S.A., Inc. is for Canon imageCLASS MF5950dw and MF5960dn models purchased and used in the United States.

**Canon**  
imageANYWARE

# Canon

M F 5 9 5 0 d w

M F 5 9 6 0 d n

## imageCLASS

### MF 5900 Series

## Black & White Laser Multifunction Printers

- Print and copy at **up to 35 ppm** in black & white
- **Quick First Print** provides first print time of approximately 6 seconds and first copy in approximately 8 seconds\*
- **Super G3 fax**
- Scan in color up to **9600 dpi** quality (interpolated) with up to 600 dpi optical resolution
- **Scan to and print from USB** for documents on the go
- **Send** scanned documents directly to **email or file server**
- **250-sheet cassette** plus 50-sheet multipurpose tray\*\*
- Up to **50-sheet\*\* DADF** (Duplex Automatic Document Feeder)
- **Remote device management** through embedded web server
- **Built-in Ethernet port** for network printing, PC faxing and scanning
- **USB 2.0 Hi-Speed** for optimal performance
- Efficient energy-saving mode; approximately **2.3W** [MF5960dn], **3W** [MF5950dw] of energy used
- **User Friendly 5-line LCD** for easy navigation
- Password-protected **Department ID Management** helps to control device usage
- **Single Cartridge System** for cost-efficient supplies replenishment



*Print, Copy, Fax, Scan with the imageCLASS® MF5900 Series Black & White Laser Multifunction Printers from Canon.*

#### WiFi Capable: [MF5950dw only]

Access all functions wirelessly, along with encryption mode and easy setup support methods.

#### Duplex Versatility:

Print on two sides out of the box – use half the paper! Two-sided output for printing, copying and receiving faxes saves space and reduces paper consumption.

#### Quick First Print:

Why waste time waiting for your print to arrive? With Canon's Quick First Print technology, your first print will arrive in approximately 6 seconds.

#### Desktop Solution:

Specifically designed for small to medium sized offices, providing convenient access to the office functions you require.

#### Network Capabilities:

Increase productivity and cost-efficiency with the built-in Ethernet port for networking. Share printing, PC faxing and scanning directly from a PC.

\* Letter size, after being restored from Energy Saver Mode.

\*\* Based on 20 lb. bond paper.



DUPLIX VERSATILITY

**35**  
Black  
ppm/cpm

**QUICK**  
1st  
PRIN T



ECO-CONSCIOUS

**FAX**  
33.6 kbps

**Network SCAN**  
600×600 dpi



Ethernet

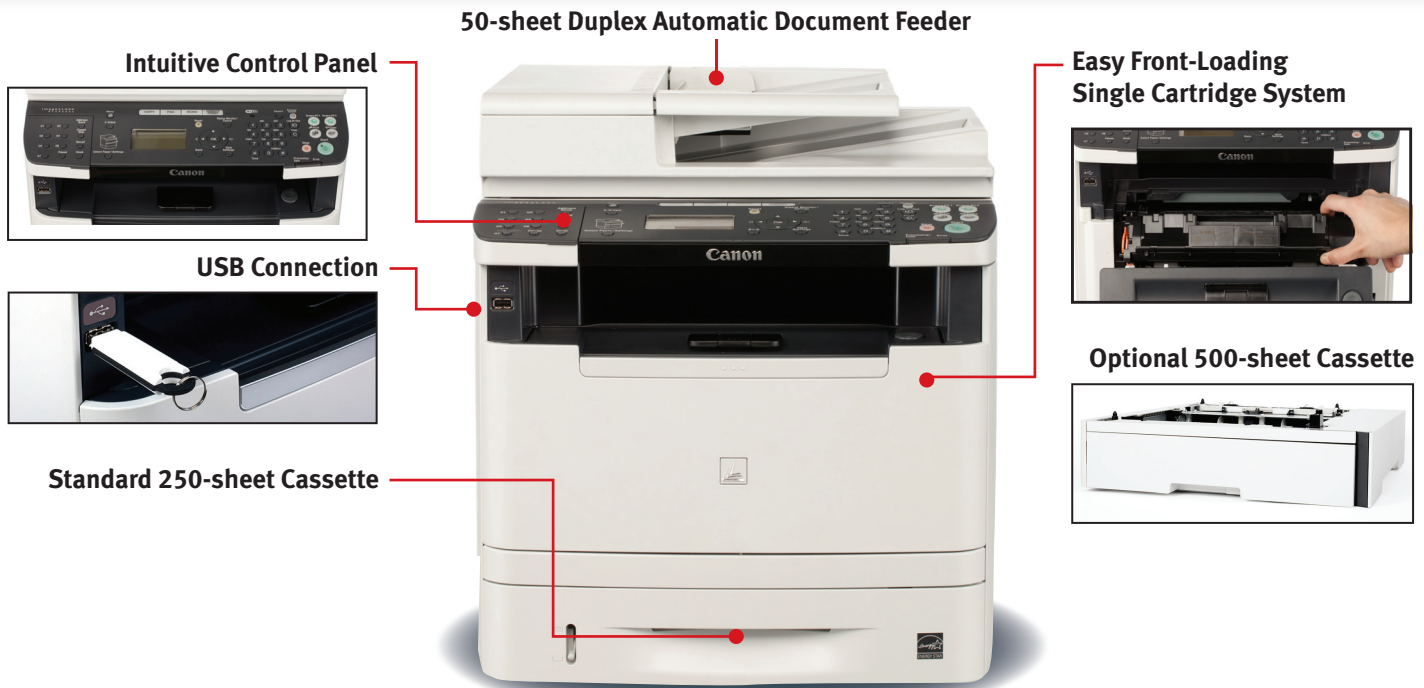
**SINGLE**  
CARTRIDGE SYSTEM



WiFi

# imageCLASS MF 5900 Series

## Black and White Laser Multifunction Printers



15.4" (W) x 18.6" (D) x 17.0" (H)  
Compact for ease of use in small office and workgroup environments.

### Advanced Performance and Versatility

#### Fast, Accurate Printing

For fast and accurate printing, Canon's Quick First Print technology prints the first page in approximately 6 seconds. You can print multi-page documents in a short time too, at print speeds of up to 35 pages per minute.

#### Auto Duplex

Available two-sided duplex functionality allows you to print, copy, fax or color scan from one- or two-sided originals to produce two-sided output with ease, cutting your paper usage by as much as fifty percent.

#### Large Paper Capacity

For increased paper versatility, both machines offer a 250-sheet front-loading paper cassette and a 50-sheet multipurpose tray. Additionally, busy office environments may take advantage of the ability to add an optional 500-sheet paper cassette.

### Enhanced Features


#### Direct Print/Scan to USB

If you're on-the-go, both machines offer a USB port to facilitate scanning files directly to, or printing files directly from, a USB drive.

#### Department ID Management

A key way to control output costs is by setting limits on who can use the machine. Department ID Management allows an administrator to set up to 300 User IDs and Passwords, so that departmental costs may be monitored and controlled.

### Cost Control



Executive Suite		
✓	✓	✓
PRINT	COPY	SCAN
Purchasing Dept.		
✓	✓	✗
PRINT	COPY	SCAN
Marketing Dept.		
✗	✗	✓
PRINT	COPY	SCAN

# imageCLASS MF5900 Series

## Black and White Laser Multifunction Printers

### Document Control

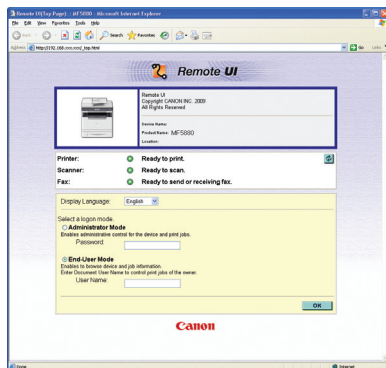
You can set the machine to forward your received fax and internet fax documents to an email address, network folder



or another fax number. Your gain is enhanced document control. No longer do you need to interrupt your work to retrieve an incoming fax and locate the person it's intended for.

### Remote Device Management

The MF5900 Series includes an embedded web server (remote UI) so you can manage the device from a standard Web browser. Separate administrator (password-protected) and end-user modes allow you to remotely view and modify your network settings, import an address book, or even retrieve an activity log.



### Environmentally Conscious

#### Energy Saver Mode

The intelligent Energy Saver Mode reduces your power consumption to approximately 3W or less.



#### Generation Green



The MF5900 series is part of Canon's Generation Green program which highlights the company's commitment to sustainability.

### Built to Fit Your Needs

Each of these machines offers distinct features that are meant to cater to the different needs of users. Whether you're part of a large IT department, or just starting out your small business with a few employees, find your solution with the MF5900 Series.

#### MF5950dw

##### Connect Wirelessly

By going wireless, you'll have the freedom to place the MFP almost anywhere in your home or small office, and easily send print jobs from your laptop. Furthermore, you'll reduce wiring clutter and help prevent security breaches with WEP and WPA-PSK.

#### MF5960dn

##### Printer Language Versatility

The MF5960dn features Canon's proprietary host-based printer language UFR II LT (Ultra Fast Rendering), which takes full advantage of your PC's processing power so your printer does not require additional memory to perform high-speed processing. If your applications require PCL (Printer Command Language) or PostScript 3 Emulation support, you'll also find these on the MF5960dn.

### Ordering Information

#### Laser Multifunction Printers and Options

- imageCLASS MF5950dw Laser Multifunction Printer
- imageCLASS MF5960dn Laser Multifunction Printer
- Cartridge 119 Black Standard  
(yields approx. 2,100 pages based on ISO/IEC Standard)
- Cartridge 119 II (Hi-Capacity)  
(yields approx. 6,400 pages based on ISO/IEC Standard)
- Paper Feeder PF-44
- imageCLASS MF5900s Virtual CarePAK
- imageCLASS MF5900s E-CarePAK

#### Item No.

- 4838B006AA
- 4838B010AA
- 3479B001AA
- 3480B001AA
- 3439B001AA
- 4838B037AA
- 5707B011AA

### For More Information Visit

[www.usa.canon.com/consumer](http://www.usa.canon.com/consumer)

For the name of the nearest dealer,  
call: 1-800-OK-CANON

Canon U.S.A., Inc.  
One Canon Plaza  
Lake Success NY 11042