

S P E C I F I C A T I O N S

	DC-445 CREASER	DC-615 SLITTER/CUTTER/CREASER	DC-645 SLITTER/CUTTER/CREASER
FEEDING CAPACITY	3.9" (100 mm)		
INPUT PAPER SIZE	5.5" x 5.9" to 12.6" x 25.6" (140 x 150 mm to 320 x 650 mm)	8.26" x 8.26" to 12.6" x 18.1" (210 x 210 mm to 320 x 460 mm)	8.26" x 8.26" to 14.56" x 25.59" (210 x 210 mm to 370 x 650 mm)
PAPER WEIGHTS	110 – 350 gsm (80 lb. text – 130 lb. cover)	110 – 300 gsm (80 lb. text – 110 lb. cover)	110 – 350 gsm (80 lb. text – 130 lb. cover)
PAPER TYPES	Uncoated, coated, laminated ¹		
SPEED	Up to 50 ppm (LTR SEF 1 crease)	Up to 11 ppm	Up to 26 ppm (LTR size 2 cuts, 1 crease)
SLIT/CUT/CREASE TOLERANCE	Crease only: ±0.3 mm	Slit/Cut/Crease: ±0.3 mm	Slit/Cut/Crease: ±0.2 mm (±0.2 mm for business cards)
CREASES	15	10	10
SLITTERS	N/A	6 slitters (2 margin, 4 center)	
POWER REQUIREMENTS	115V 60Hz 1.7A; 230V 50/60Hz 0.8A	120V 50/60Hz	120V 50/60Hz 3.3A
DIMENSIONS	50" x 25" x 23"	63" x 25" x 42"	30" x 90" x 45"
WEIGHT	175 lbs.	291 lbs.	793 lbs.
OPTIONS	Air Knife; Double-feed detection; Slitter/perforator tools; IFS Integrated Folding System	Double-feed detection; CCD/BCR; long paper trays; PC with Job Creator software; IFS Integrated Folding System	Business card; Perforator; Score; Trading Card; IFS Integrated Folding System

DC-F1 FOLDER SPECIFICATIONS WITH CONNECTING DEVICES

	DC-445 CREASER	DC-615 SLITTER/CUTTER/CREASER	DC-645 SLITTER/CUTTER/CREASER
FOLD TYPES	Single, letter, Z, gate, double parallel, none		
INPUT PAPER SIZE ²			
NO FOLD	5.5" x 5.9" to 12.6" x 25.6" (140 x 150 mm to 320 x 650 mm)	1.89" x 3.35" to 14.57" x 25.6" (48 x 85 mm to 370 x 650 mm)	
FOLD	5.5" x 6.7" to 12.6" x 25.6" (140 x 170 mm to 320 x 650 mm)	1.89" x 6.69" to 14.57" x 25.6" (48 x 170 mm to 370 x 650 mm)	
FINISHED PAPER SIZES			
NO FOLD	5.5" x 5.9" to 12.6" x 25.6" (140 x 150 mm to 320 x 650 mm)	1.89" x 3.35" to 14.57" x 25.6" (48 x 85 mm to 370 x 650 mm)	
FOLD	5.5" x 3.35" to 12.6" x 25.6" (140 x 85 mm to 320 x 650 mm)		
1-FOLD		1.89" x 3.35" to 14.57" x (25.6"-1.67") (48 x 85 mm to 370 x (650-42.5 mm))	
2-FOLD		1.89" x 3.35" to 14.57" x (25.6"-1.67" x 2) (48 x 85 mm to 370 x (650-42.5 mm x2))	
PAPER WEIGHTS	110 – 350 gsm ³ (80 lb. text – 130 lb. cover) Maximum paper weight for double parallel fold is 230 gsm (80 lb. cover)		
PAPER TYPES	Text, coated, uncoated, laminated – paper + film must be within specifications listed above		
SPEED	50 ppm ⁴ (LTR + 1 center crease + 1 fold using knife 1)		
FOLD LENGTH	Minimum 3.34" (85 mm)	Minimum 3.35" (85 mm)	
DISTANCE BETWEEN FOLDS	Minimum 1.67" (42.5 mm)		
POWER REQUIREMENTS	100 – 240V AC +6%-10% 50/60 Hz 1.9 – 0.9A		
DIMENSIONS (WxDxH)	21.65" x 24" x 42.1" (550 x 610 x 1,070 mm)		
WEIGHT	210 lbs. (95 kg)		
OPTIONS	SC1; ST1; ST2	SC1; CC1; ST1; ST2	SC1; CC1; ST1; ST2

¹ Varies upon paper weight, size, and laminated coating
² Varies upon connecting devices
³ Varies upon upstream unit
⁴ Varies upon upstream unit and configuration

Duplo



Integrated Folding System



Incorporating an in-line knife folder with a DC-series finisher.



DC-645
Slitter/Cutter/Creaser

DC-615
Slitter/Cutter/Creaser

DC-445
Creaser

Duplo

IFS Integrated Folding System



The Integrated Folding System incorporates an in-line knife folder with a DC-series finishing device folding applications in one pass using a single finishing system.

Adding to an already versatile line of digital print finishing solutions, Duplo's Integrated Folding System (IFS) achieves the next level in automation. Incorporating an in-line knife folder with a DC-series finishing unit, the IFS eliminates the need for a separate folding device and enables users to not only slit/cut/crease with the DC-645/615, or slit/perforate/crease with the DC-445, but also fold digitally printed applications in a single pass using one system. By performing the functions of multiple machines, the system removes the bottleneck of the finishing process that occurs when setting up jobs separately. With a speed of up to 50 sheets per minute, the IFS can carry on the automation and capabilities of the integrated DC-series unit.

EASY SETUP

The Integrated Folding System has been designed to be easily set up using a centrally located control panel. Regardless of how complex the job requirements may be, the operator is guided throughout the complete programming process making it easy for inexperienced operators to set up and run the system with confidence. The Job Creator software can also be used to program new jobs onto the DC-645/615 IFS.

MULTIPLE-UP PROCESSING

The DC-645/615 IFS has a unique capability that no other system has which is to slit, cut, crease, and fold multiple-up pieces simultaneously in one pass. This means that when pieces are laid out in rows (see Fig. X), the cutter, creaser, and folder can perform their functions on more than one piece at a time.

EFFICIENT FOLDING TECHNOLOGY

Using two knife blades, the IFS can perform the most common folds including single, letter, Z, gate, and double parallel along with an infinite number of custom folds. The combination of the knife folding mechanism and the spring-loaded folding rollers make it possible to fold a wider range of paper stocks with greater accuracy and no adjustments. Even when switching between paper thicknesses, the spring-loaded folding rollers will automatically adjust to compensate for the thickness.

INCREASED STACKING CAPACITY

The IFS can be configured with either a short (8") or long (15.75") vertical stacker where the finished pieces, both folded and un-folded, are collected. The vertical stacking method accommodates twice as many pieces than shingle conveyors, enabling more pieces to be stacked before filling the receiving tray and requiring unloading. In addition, this method provides the ability to stack in rows, keeping the finished pieces neatly stacked. The vertical stacker can be added to the DC-645, DC-615, or DC-445 independently without the folder.

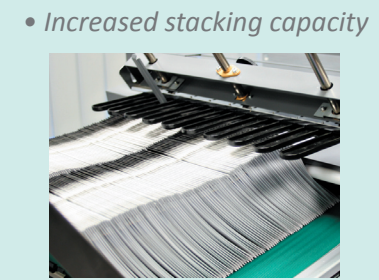
CUSTOMIZABLE CONFIGURATIONS

The Integrated Folding System is made up of several modules and can be configured to meet individual needs. For example, if space is limited, a customer can choose to add a short vertical stacker which is half the size of the larger, high capacity stacker.

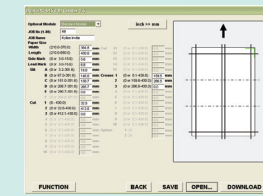
*Users who already have a DC-445 Creaser or DC-645/615 Slitter/Cutter/Creaser can upgrade by adding a configuration kit and updating their software.

FEATURES

- All-in-one slit/cut/crease/fold finishing solution
- Folds sheets up to 350 gsm (130 lb. cover)
- Completely automated set-up
- Unmanned operation



- Increased stacking capacity
- Easy programming via control panel or Job Creator software



DC-645/615 IFS

The Integrated Folding System further extends the capability of the DC-645/615 Slitter/Cutter/Creaser enabling users to slit, cut, crease, and fold applications in a single pass. A total of 18 configurations are possible with the DC-645/615 IFS.

DC-445 IFS

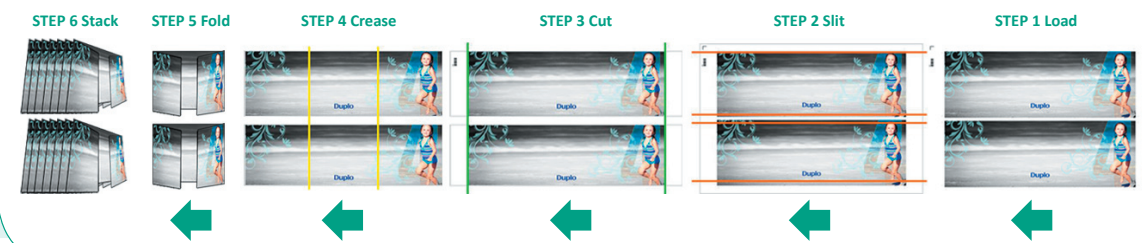
The DC-445 Integrated Folding System can slit, perforate, crease, and fold (slitting and perforating tools optional) applications in one pass with up to 15 creases and 3 perforations per sheet. A total of 6 configurations are available with the DC-445 IFS.



POPULAR FOLD TYPES FOR IFS FOLDER



DC-645/615 IFS WORKFLOW (Figure X)



DC-445 IFS WORKFLOW

