

DocuWide
6055



DocuWide 6055

Fulfil your scanning needs with an A0-size compatible digital multifunction device

Do more than colour scan. Revolutionise your engineering environment.

Engineering departments today need to be highly functional, with digital offices and network environments. With the DocuWide 6055 Series, you can digitise complex technical drawings and manage documents effectively using the in-built high-speed, high-resolution colour scanner*.

This new series delivers Fuji Xerox's renowned high-speed performance, a range of security functions, and new features essential for an engineering input and output environment — all in a single machine.

* The colour scan function is an option on the MF Model.

DocuWide 6055MF 4-roll model



Operability

- As easy to use as office multifunction devices
- Designed to ease daily workload

High Quality

- 600 x 600dpi high-resolution input and output
- High-performance CIS*1 enables stable picture quality

High Productivity

- High-speed scanning at 152.4mm/s in monochrome and 50.8mm/s in colour*2
- High-performance CIS*1 enables stable picture quality

Secured

- Security printing/private printing functions enable secured output
- Copy management and hard disk erasure*2 functions prevent data leakage

High Quality

- Ecological, low-energy design that meets international environmental standards.



*1 Contact image sensor *2 Optional

Select a model that fits your paper feed needs

Choose from DocuWide 6055 Series models with two paper-feeding options: 4-roll type. Each model also supports a wide range of paper sizes.



Paper feeder of 4-roll model

Easy paper feeding with the auto-loading mechanism

The auto-loading mechanism in the DocuWide 6055 Series makes light work of paper feeding. Just insert the edge of the paper and the machine does the rest. Use the auto-loader's paper cut button to cut paper to lengths of 15cm or longer.



Paper cut button

Total Performance.

Deliver superior picture quality in a flash with DocuWide's high-speed engine.

High-speed scanning at high resolution.

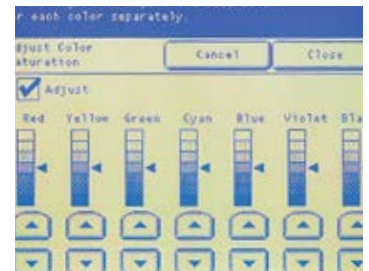
The DocuWide 6055 Series scans high-precision data at a high resolution of 600dpi. With fast scanning speeds of 152.4mm/s for monochrome data or 50.8mm/s for colour*¹ data, you can scan large volumes of documents quickly and efficiently. Or use the control panel to slow speeds down to low (1/2 speed) or super low*² (1/6 speed) mode to make sure everything is scanned to your satisfaction. In direct scan mode, the DocuWide 6055 Series uses a mechanism to transfer image data in parallel with document scanning, allowing smooth and efficient data input.

*¹ Optional*² When scanning monochrome documents

Adjust density and saturation settings for individual colours.

Set seven density* and saturation* levels for red, yellow, green, light blue, blue, purple and black individually before scanning a document. Just move the slide bars corresponding with each colour to obtain a document with the colour density and saturation you desire.

* Not applicable with Color Copy Assistant for DocuWide 1.0/Color Copy Assistant Pro for DocuWide 1.0. Density adjustment is not applicable when Colour Mode is set to full colour. Colour scanning function is required when using saturation adjustment. It is not applicable when Colour Mode is set to grey scale, monochrome binary or monochrome pseudo grey scale (binary).



Colour scanning function is optional

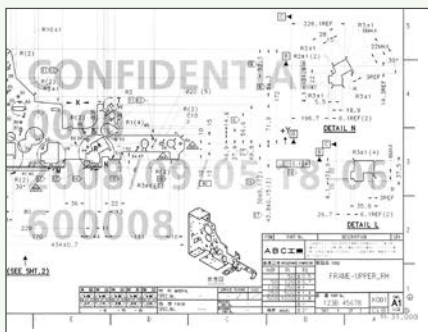
Security

Security printing function to protect highly confidential documents

Highly confidential data can be stored in the main unit and to be printed only when users input a password at the control panel. This prevents information leaks due to confidential documents being left in the output tray.

Copy management function to stop unauthorised document distribution

Print documents with a user ID or character string printed on the background of all pages.

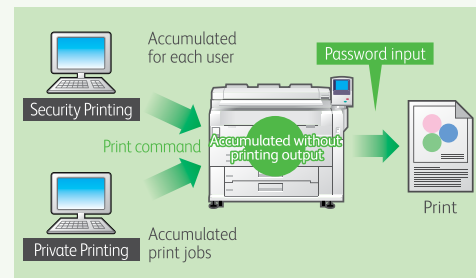


Overwriting* and erasing data remaining in your hard disk

The DocuWide 6055 Series comes with a "Data Security Kit" that overwrites and erases temporary files in the hard disk, preventing leakage of hard disk data. Data can be erased all at once to prevent the data remaining in the hard disk from being analysed by a third party during transportation.

* Optional.

Private printing* for efficient and secure output



Set a user ID when you issue a print command so only your document is displayed and printed after authentication at the main unit. Where security printing accumulates print jobs arbitrarily, private printing accumulates all print jobs for each user separately. This reduces unnecessary print jobs and prevents documents from being seen by a third party.

*Not applicable when using security printing.

Restrict users by using an IC card for authentication via the IC Card Reader*.

*Optional. Some of the functions of the IC Card Reader may be unavailable.

supports
FeliCa*¹, MIFARE*²,
eLWISSE*³, ELWISSE*⁴



*¹ Contact-less IC card developed by Sony.

*² Contact-less IC card developed by NXP Semiconductors. Can read UID of MIFARE.

*³ Contact-less IC card developed by NTT Communications. Can read "Com-ID" of eLSWISSE.

*⁴ Contact-less IC card developed by NTT Laboratories. Can read card serial ID issued by NTTCard Solution.

Scanning.

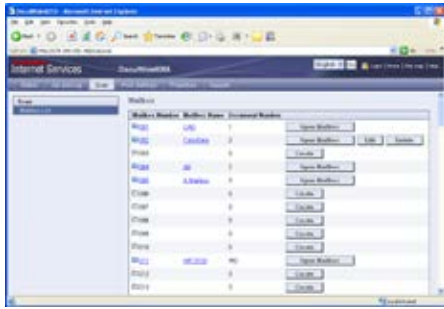
With easy-to-use and advanced functions, pick from one of the various image capturing modes according to your needs.

Network Scanning

Capture data via the mailbox using three types of network scanning functions.

Save in TIFF, PDF, JPEG* and XDW (DocuWorks) formats.

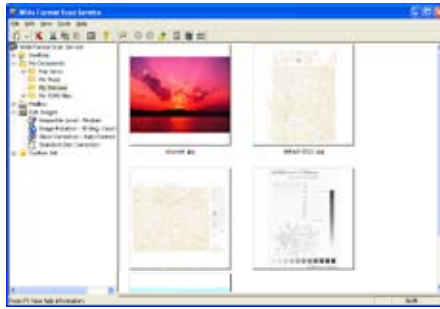
* Colour scanning function (optional) is necessary.



CentreWare Internet Services screen

CentreWare Internet Services

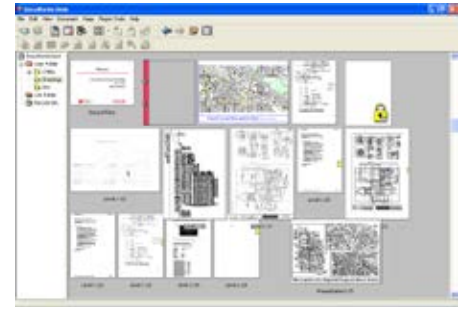
Scanned data can be captured using your computer's Web browser.



Wide Format Scan Service screen

Wide Format Scan Service

Directly capture a scanned document in the mailbox to a folder in the client PC. In addition to a normal thumbnail display, part of a document, such as the title of a drawing, can be expanded and displayed as a thumbnail. Scanned documents can also be edited by executing tilt correction and noise elimination.



Network TWAIN driver screen

Network TWAIN Driver

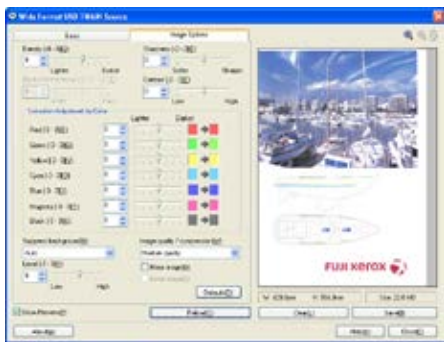
Scanned data can be captured by applications that support TWAIN like DocuWorks*.

* Optional software

Direct Scanning

Capture data via USB connection with three types of direct scanning functions.

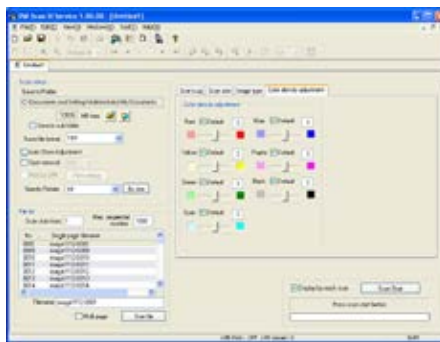
You can adjust image quality without placing originals again and print while scanning to improve productivity.



USB TWAIN driver screen

USB TWAIN Driver

Scanned data can be captured by installing a scanner driver supporting TWAIN on your PC.

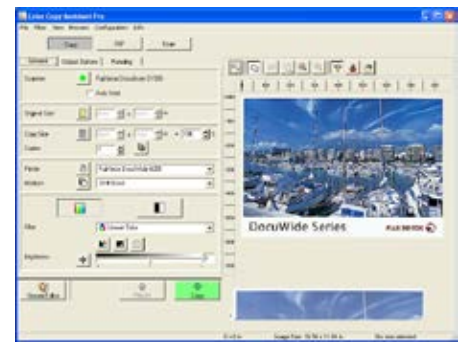


DW-Scan 3 colour density adjustment screen

DW-Scan 3 Service*

Scan high-volume documents efficiently with the DW-Scan 3 Service, which provides functions to facilitate input operations like filename editing, tilt correction and noise elimination while viewing a scanned image, and a preview function for checking the image quality while working.

* Optional



Color Copy Assistant Pro for DocuWide 1.0 screen

Color Copy Assistant*¹

Color Copy Assistant*¹ comes with advanced colour adjustment functions. So all you have to do is issue a printing command to a colour output device*² to colour copy.

*¹ Optional. Color Copy Assistant Pro for DocuWide 1.0 is also available.

*² DocuWide C436EP or the equivalent colour output device and a network environment are necessary. Consult a Fuji Xerox sales representative for the applicable models.

Printing / Copying.

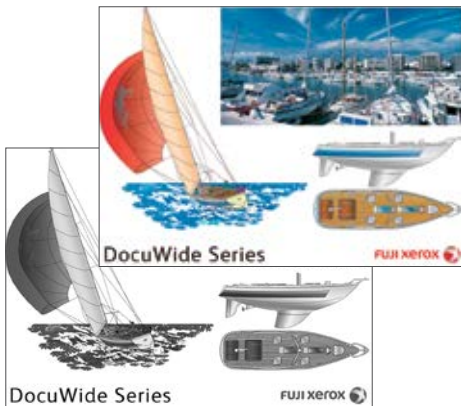
Print and copy high-quality documents easily at high-speed in various data formats.

High-speed output of five A0-size sheets per minute.

The DocuWide 6055 Series uses a high-performance printing engine that can output up to five A0-size sheets per minute, and process documents at 20 A4-size (LEF) sheets a minute. With such stellar performance, you take a shorter time to copy and print documents.

High resolution output of 600 x 600dpi.

Realise the level of image quality essential in an engineering office with a high resolution output of 600 x 600dpi. Reproduce diagonal lines, curves and fine lines — all indispensable in drawings — with sharpness and clarity. Text in technical documents, halftone photographs and illustrations can also be output in high definition.



A0-size output of 9 metres (standard) or 15 metres (maximum) supported.

The DocuWide 6055 Series outputs up to 9 metres of A0-size standard paper as a standard feature, allowing up to 99 sheets to be output consecutively. Add memory to copy and print up to 15 metres of A0-size standard paper*1.

*1 Optional

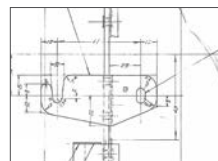
Advanced background elimination technology allows beautiful copies even when original prints have uneven density.

Fuji Xerox uses advanced background elimination technology to handle originals with backgrounds of uneven density. In "Density Uneven Original" mode, the density information of dark and light backgrounds can be detected in detail in each area, enabling density to be adjusted. Parts of dark background are skipped while lines on light backgrounds remain, producing a copy with few background impurities.

Example of copy using "Density Uneven Original" mode



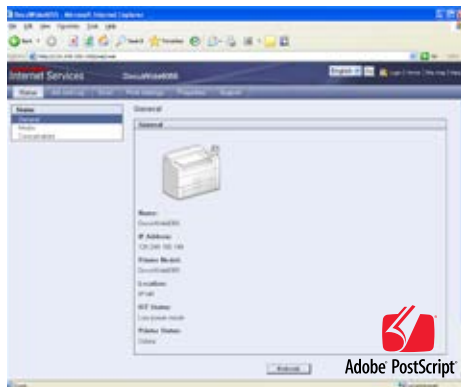
Original with relatively uneven background



Example of copy

High-performance controller yields high productivity.

The controller improves productivity by executing high speed processing and enabling simultaneous job reception. There are various standard data formats supported, along with Adobe® PDF* and PostScript® 3™ as options. Users can check on the status of the main unit from a Web browser on a client PC with CentreWare Internet Services.



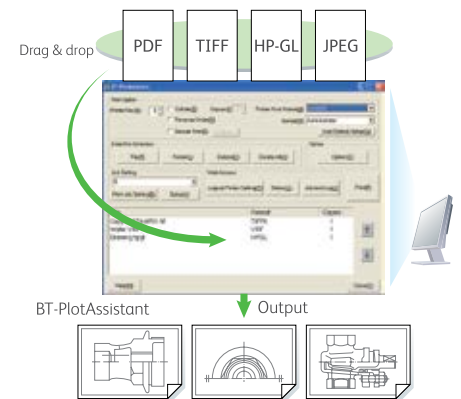
Input the next original during sort output.

Simultaneous parallel processing realises high productivity. The MF device has a function (simultaneous parallel processing) that can be used to sort and register multiple next documents during output.

"BT-PlotAssistant" outputs different data all at once.

Prepare multiple data in different formats by dragging and dropping them on the screen. You don't have to start individual applications so data can be output all at once.

Print Control software (optional)



Electronic sorting and other copy functions allow higher output and efficiency.

Electronic sorting function

- Program sort (distribution pattern sort)
- Multi-job sort

Copy function

- Sample copy
 - Part of the original can be copied as a sample with different settings. Nine steps of "Copy Density", seven types of "Original Quality" and seven types of "Background Elimination" can be output as a list.
- Additional copy function
 - The definition and magnification of the original output can be changed and the number of copies can be specified again.
- Wide zooming range of 25% to 400%
- Copy editing
 - Frame erasing / Read start position adjustment / Copy position

Option.

Extensive input/output options essential in your engineering department.

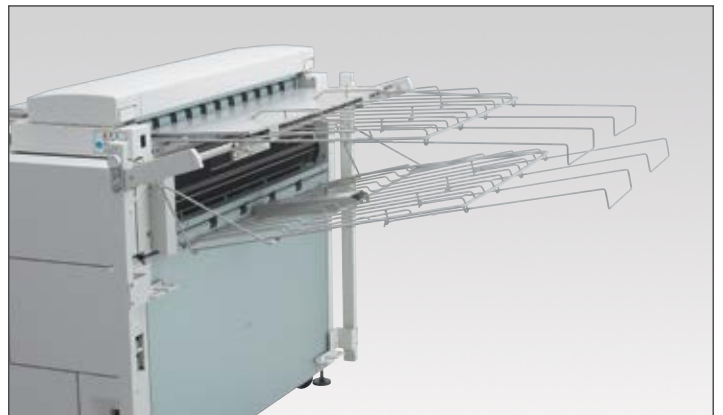
Registering stamp pattern from PC via network. Up to two stamps can be printed at a time.

Up to 99 types of stamp patterns created by a PC can be registered via a network. Two stamps of up to 150 x 150mm each can be printed in black or grey as a preset or manually adjusted position. Vertical and horizontal auto modes are also supported and the stamp can be printed at 90° rotation. The date of the stamp is automatically updated and the date format can be changed easily. Choose from two types of numbering: predetermined management number or set number* of each copy gathered by an electronic sorter. You can choose between the little endian date form (eg. 12 November 2008), the middle endian date form (e.g. November 12, 2008), or begin with the last two digits of the Western calendar year (eg. 12/11/08).

* Copy only. Optional DW6055 Stamper is necessary.



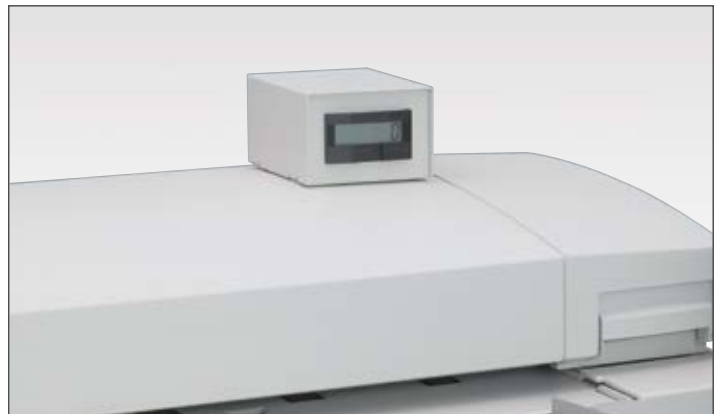
Simple folder (Not available in Australia)



Document Catch Tray (for holding original) & Paper Catch Tray* (for holding paper)
* not applicable when using simple folder.



Long-size Document Holder



Scan Counter Kit

Eco-friendly

Fuji Xerox has created a 'closed loop' recycling system that covers the entire lifecycle of its products, from product planning and development to production and disposal. Fuji Xerox uses its original collection system to recycle products by the most effective route. Used products are collected as important resources and their parts are injected into a unified production line directly coupled with

assembling, so that they are recycled as parts or materials. Fuji Xerox has certified that Docuwide 6055 Series as a "resource recycling product" that clears Fuji Xerox's stringent 17-item standard. "Resource recycling products" consists of 45% recycled parts (in weight) or more. 95% of the product (in weight) or more can be recycled and they are manufactured using a resource recycling production process.

DocuWide 6055 Specifications.

	DocuWide 6055MF	DocuWide 6055
Type	Console Type ^{*1}	
Resolution	Data processing resolution : 600dpi x 600dpi (23.6 x 23.6 dots/mm) Output resolution: 600dpi x 600dpi (23.6 x 23.6 dots/mm)	
Colour	<Standard> B/W scanning <Optional> Colour Scanning: Halftone 256 at each colour (RGB) Printing: B/W – Binary / Halftone (256 grey)	Printing: B/W – Binary / Halftone (256 grey)
Continuous copying/ printing speed	A0: 5ppm A1: 7ppm A1 LEF: 9ppm A2: 9ppm A2 LEF: 12ppm A3: 12ppm A3 LEF: 16ppm A4: 16ppm A4 LEF: 20ppm	A0: 5ppm A1: 7ppm A1 LEF: 9ppm A2: 9ppm A2 LEF: 12ppm A3: 12ppm A3 LEF: 16ppm A4: 16ppm A4 LEF: 20ppm
Paper supplying system	4 Roll Model: 4 paper rolls, Manual Feed	4 Roll Model: 4 paper rolls, Manual Feed
Feed capacity (Media size)	(Roll Paper): ISO A series : A0, A1, A2, A3; JIS B series: B1, B2, B3; ISO B series: B1, B2, B3 880(860)mm, 625(620)mm, 440(435)mm; 36", 34", 30", 24", 22", 18", 17", 15", 12", 11" Width: 279.4 to 914.4mm; Outside diameter: 185mm or less Manual Feed (Cut Paper): A0(Portrait), A1, A2, A3, A4, JIS B1(Portrait), JIS B2, JIS B3, JIS B4, ISO B1, ISO B2, ISO B3, ISO B4, 880(860)mm, 625(620)mm, 440(435)mm, 36"(Portrait), 34"(Portrait), 30"(Portrait), 24", 22", 18", 17", 15", 12", 11", 9", 8.5" Width: 279.4 to 914.4mm; Length: 210 to 2000mm	
Paper cutting system	Standard size cutting, Synchronized cutting, Variable length cutting	
Copy media ^{*2}	Plain paper: 64 to 81.4 gsm; Vellum: 55 to 121 gsm; Film: 75 to 90µm	
Image size	Width: 210 to 914.4 mm; Length: 210 to 15,000 mm	
Image loss	Roll paper: Lead edge 5mm, Trail edge 5mm, Right/left sides 5mm (When outside diameter of roll is 100mm or less, Lead edge 8mm, Trail edge 8mm, Right/left sides 5mm)	
Power supply	Printer Section: AC 208-240V (-10% to +6%), 13A, 50/60HZ, Single Phase with common line Scanner section: AC 208-240V (-10% to +6%), 13A, 50/60Hz, Single Phase with common line	
Power consumption	Max: Printer Section: less than 3.2KW Scanner section: less than 480W Low power mode: 16.5W or less	Max: Printer Section: less than 3.2KW Low power mode: 13.0W or less
Warm up time	180 seconds at room temperature 22 degrees centigrade (55 % RH)	
Dimensions (Width x Depth x Height)	1,305(W) x 707(D) x 1,108(H) mm	1,305(W) x 707(D) x 947(H) mm
Space requirement (Width x Depth)	1,305(W) x 707(D) mm	
Weight ^{*3}	326Kg	285Kg
		285Kg
		244Kg

*1 The scanner and the printer are integrated in one unit.
*2 It is advised to use Xerox recommended paper.
*3 The machine weight excludes toner and paper

Scan Function

Item	DocuWide 6055MF	DocuWide 6055
Type	Standard: Monochrome Scanner; Option: Full Colour Scanner	
Scanning Size ^{*1}	Width: 176(ISO B5 short edge) to 914.4(36") mm Length: B/W mode: 210(A4 short edge) to 15,000mm Colour mode: 210 to 7,500mm	
Scanning Resolution	600dpi x 600dpi (23.6 x 23.6 dots/mm)	
Scanning halftone	Monochrome: Binary, Grey scale (binary), Grey scale Full colour (Optional): 256 levels of grey for each red, green, and blue colour channel.	
Scanning mode	Text/Line, Text/Photo, Picture, Photo, Transparent, Blueprint, Uneven-toned background	
Scanning speed	<Monochrome> Standard mode: 152.4 mm/sec.; Low speed mode: 76.2 mm/sec.; Super low speed Mode: 25.4 mm/sec. <Full Colour> (optional) Standard mode: 50.8 mm/sec.; Low speed mode: 25.4 mm/sec	
Scan and original input functions	Stored programming, Interruption, Background suppression, Independent X-Y magnification, magnification fine adjustment (in 0.1 % increments), scan density adjustment (9 levels), Sharpness, magnification fine adjustment (in 0.1 % increments), scan density adjustment (9 levels), Sharpness, (7 levels), Colour saturation adjustment (7 levels)	
File storing	Scan to mail box (Network scanning)	Save to PC (Direct scanning)
Connectivity	Ethernet 1000Base-T / 100Base-TX / 10Base-T	USB 2.0 (max. 5meters)
Protocol	TCP/IP, HTTP	N/A
File format ^{*2}	Format: : TIFF, PDF, XDW, JFIF (JPEG); Compression type: MMR (for monochrome scanning); JPEG (for colour scanning)	
Driver	Wide format network TWAIN source	Wide format USB TWAIN source

*1 The maximum length for direct scanning may vary depending on the software used. The maximum length for network scanning is as follows: 15mm (600 dpi TIFF/PDF monochrome binary) scanning length requires optional system memory 512MB. Although the maximum scanning length of XDW is 2774mm(600dpi)/4161mm(400dpi)/5548mm(300dpi)/6250mm (200dpi and 150dpi), the scanned images of XDW will be changed to the maximum length of 500mm by using DocuWorks 6. The maximum scanning length in full colour mode of TIFF/PDF/JFIF is 2772mm(600dpi)/4159mm(400dpi)/5545mm (300dpi)/7500mm (200dpi and 150dpi).
*2 For direct scanning, the output format differs depending on the application used.

- The DocuWide 6055/6035 Series conforms to the Evaluation Criteria and Considerations for Copiers in the Law on Promoting Green Purchasing, enacted to promote the use of goods and services that help reduce environmental impact.
- Fuji Xerox actively promotes recycling, recognising the importance

of environment protection. The DocuWide 6055/6035 Series uses recycled parts that conform to Fuji Xerox's original quality standard

- As a participating member of the International Energy Star Program, our product is determined to have met the standards for International Energy Star Program products.



<For Your Safe Use>

- Before using the product, read the Instruction Manual carefully for proper use.
- Use the product with an appropriate and adequate power source and voltage displayed.
- Be sure to ground the machine. In the case of a failure or short circuit, an electric shock may result.



Copy Function

Item	DocuWide 6055MF
Original feed system	Original transfer type
Original size	Width: 176(ISO B5 short edge) to 914.4(36") mm, Length: 210 (A4 short edge) to 15,000 mm
Original thickness	0.05 to 0.2mm (max thickness for rear exhaust mode: 12.7mm)
Original Type	Text/Line, Text/Photo, Picture, Photo, Transparent, Blue Print, Uneven-toned background
Scanning resolution	600dpi x 600dpi (23.6 x 23.6 dots/mm)
Copy size	Width: 210 to 914.4mm, Length: 210 to 15,000mm ^{*1} (plain paper), 210 to 2,500mm (vellum / film)
Continuous copying	99 sheets
First copy output time (FCOT)	Within 22.0 seconds at A0 size copy/100%/standard paper fed from upper roll
Magnification	100% : 1:1 +/- 0.4% (at an ambient temperature of 22 C and R/H 55%)(Except over A0 size copy) Preset: 1:0.250, 1:0.353, 1:0.500, 1:0.707, 1:1.414, 1:2.000 Custom setting: 1:0.250 to 1:4.000 (in 0.1% incremental)
Memory	Standard: 1GB; Max.: 1.5GB (with additional memory installed)
Copy and original	Auto mode(Automatic media selection) / Manual mode, Electronic sorter Electronic stamp ^{*2} (max. 2 stamps: black/grey), Copy interruption, Manual feed copy, Sample copy, Copy reprinting, 90 degrees rotation, Background suppression, Independent X-Y magnification, Magnification fine adjustment (in 0.1% incremental), Copy density adjustment (9 levels), Sharpness, Contrast, Scan start position adjustment, Copy position adjustment, Lead and trail margins, Mirror image, Inverted negative/positive image, Edge erase, Black/White threshold, Colour density adjustment (7 levels), Set numbering, Folder ^{*2}

*1 It requires optional Add System Memory 512MB.
*2 Optional function.

Print Function

Item	DocuWide 6055MF	DocuWide 6055
Print size	Same as the copy size	
Continuous printing	99 sheets	
First Print Output Time (FPOT)	Within 22.0 seconds (with A0 size original/1.28MB data/paper fed from upper roll)	
Magnification	100% : 1:1 +/- 0.4% ^{*1} (at an ambient temperature of 22 C and R/H 55%)	
Connectivity	Standard: Ethernet 1000Base-T / 100Base-TX / 10Base-T	
Protocol	TCP/IP (LPR, FTP)	
Emulation	Standard: HP-GL/HP-GL2/HP-RTL (based on HP Designjet 1050c), TIFF (applicable LZW), CALS, JFIF (JPEG) Versatec series: VRF, VCGL, FX-MMR, Option: PostScript 3, PDF 1.6, CGM	
Print Drivers	32Bits Edition: Windows 2000/XP/Vista, Windows Server 2003 /2008 64Bits Edition: Windows XP/Vista, Windows Server 2003 / 2008	

*1 Over A0 size is not within +/- 0.4% .

For more information please call or visit us at

Fuji Xerox Australia Pty Ltd. ABN 63 000 341 819.
Australain Head Office: 101 Waterloo Rd, Macquarie Park NSW 2113.
Phone (02) 9856 5000 Fax (02) 9856 5003

13 14 12
www.fujixerox.com.au

