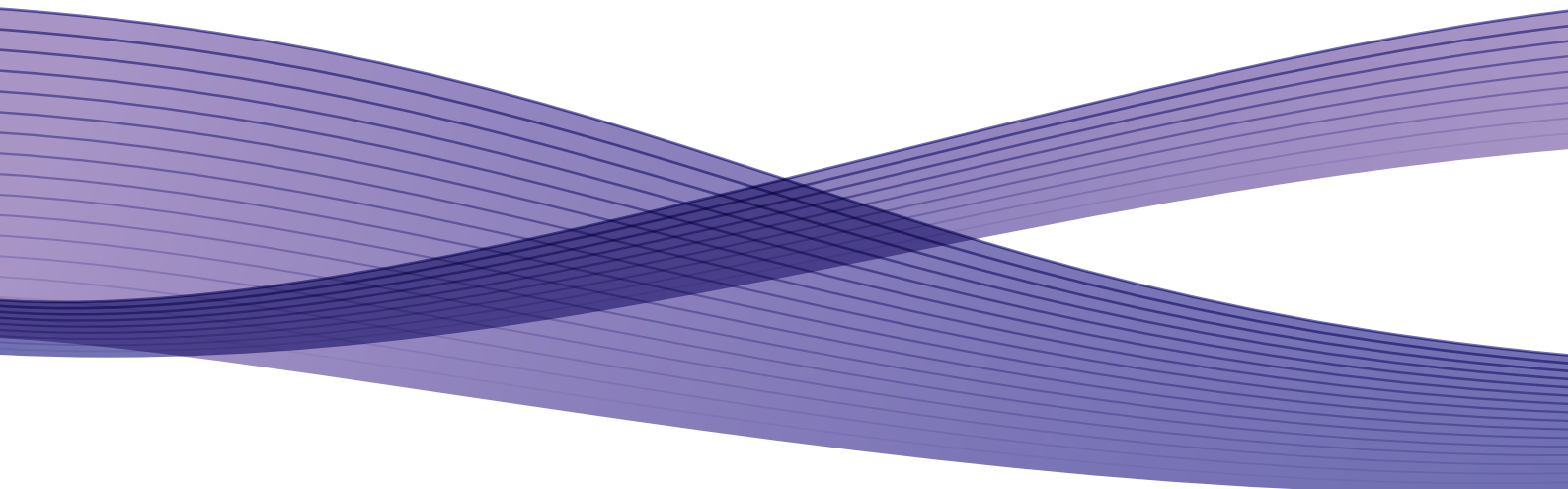


Color J75 Press

The key to high-value jobs
and highly satisfied customers.



Growing your business continues to be a challenge. Doesn't it?

It always has been. But let's talk about what could make it easier.

Every day, you face more pressure to offer more — more complex jobs, more high-value solutions, more value, and all at faster turnaround times. Achieve it, and business growth isn't as complicated as it has always seemed to be. Easier said than done?

Not anymore.

The Color J75 Press makes delivering for your customers easier than ever. It automates great colour. It runs supported heavyweight stocks at full rated speed. It provides scalable feeding and finishing solutions that produce a range of high-value applications. It helps to automate press controls. And it offers workflow power and flexibility so it all

integrates with your offset business and complements your existing workflow.

If your business is ready for growth, then the Color J75 Press is the powerful solution you've been waiting for.



Answering some critical business questions

Are you looking to run more high-value applications — the kind that generate the return on investment that both you and your customers demand? Are they asking for faster turnaround times? Are you migrating from simple colour customer requests to the more complex jobs where colour matching is critical? From existing applications to digital?

Normally, none of that adds up. It used to be that you had to tell your customers they could have it fast, or have good quality, or at a competitive price. Maybe they could pick two. But three? Not a chance.

Now there is an answer to those questions. It's your answer to a more productive printing solution and a stronger business. It's the Color J75 Press.

More — uptime, productivity, options, opportunity.

So why buy the Color J75 Press? Because it offers you — and your customers — more. More of the types of jobs that are more in demand. More stocks that run at rated speed and that become the finished applications that bring a premium price. More productivity and reliability that add up to more profit. And more opportunity as you become the go-to partner for a wider variety of customers.

And in the case of the Color J75 Press, less is also more. You get the ultimate digital solution in a small footprint.

The centre piece of a more flexible solution.

The Color J75 Press is the centre of a complete digital printing and workflow solution designed to drive more productivity and profit. The Color J75 Press solution integrates the things you need to get started—and thrive—in the digital print marketplace.

Unique media that expand your capabilities. Workflow solutions that help to streamline your processes. And Business Development that help you find opportunity and build a stronger business. With extra capabilities like these, Fuji Xerox Australia is your partner of choice.

Easy to get started. Quick to master.

One of the most powerful features is its ease-of-use so that operators can quickly get the most out of its tremendous capabilities. From Simple Imaging Quality Adjustment (SIQA) that helps to automate press controls to walk-up scanning functions, the result is that you can spend time on more activities that build your business.



Colour that's automatically better

How good is your colour management? And how important is it to your growing business? When you need to match corporate colours and industry colour standards, automated colour management is a game-changing capability.

At the heart of the Color J75 Press is the inline spectrophotometer. It's truly the nerve centre of the Color J75 Press, providing the power of our ACQS colour management tools to improve colour stability, accuracy and repeatability.

And with the spectrophotometer placed strategically within the paper path, automated processes like colour calibration and destination profiling work seamlessly while streamlining workflow, boosting your productivity — and improving your bottom line.

Automated Calibration for Consistently Outstanding Colour

The ACQS inline spectrophotometer automates a critical element of colour management — press calibration. It can be set to run automatically on a schedule, eliminating the problem of busy operators forgetting to calibrate. It makes it easy to be consistent across multiple shifts and operators —no more guessing.

Automated Calibration:

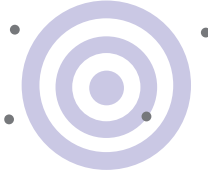
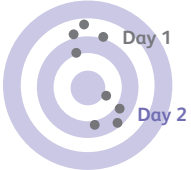
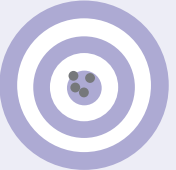
- Helps eliminate mistakes due to human error or mis-feeds when calibrating by hand — or when calibration is not done at all. There is no separate feeding of calibration charts.
- Helps to reduce non-productive printer time and facilitates job turnaround.
- Can be scheduled to run automatically at the next job boundary after so many elapsed hours or printed pages.
- Helps to reduce colour variation because operators forget to calibrate or calibrate off schedule due to workload (FreeFlow® Print Server only).
- Performs automatic white balance calibration (of the spectrophotometer) to ensure that the sensor always returns accurate results.

Advanced Destination Profiling for Improved Colour Accuracy

Advanced Destination Profiling creates a superior, custom ICC-compliant Destination Profile for colour critical applications, such as photos and direct mail that require a high degree of colour accuracy and detail as well as a pleasing appearance — all at the touch of a button.

Advanced Destination Profiling:

- The proofing and approval process has never been easier. Colour match the designer's intent, usually on the first try.
- Helps to provide improved colour consistency between machines and over time on one machine.
- Outstanding colour accuracy to industry colour standards such as GRACoL® and ISO 12647.
- Results in wonderful neutrals, shadow and highlight detail, and photo rendering.

Typical Approaches to Colour		Fuji Xerox ACQS
		
Absence of conventional colour management will be hit or miss.	Calibration generates more consistency but not necessarily more accuracy.	Keep your Fuji Xerox press more stable and accurate.
With variations in operator skill, materials and environmental factors, press output quality can easily drift away from optimum results.	Manual or automated calibration will first help you achieve more predictable colour outputs.	With automated, on-press calibration and profiling, you'll be able to better match approved proofs and previously printed jobs.

Be ultimately confident — with Confident Colour

Fuji Xerox prides itself on the fact that we deliver standout, automated colour management technology across our digital colour portfolio. In conjunction with the Color J75 Press, Fuji Xerox Confident Colour, a collection of the finest colour management technologies and services, delivers more outstanding colour and more saleable output. From consulting expertise to business development tools through to software solutions, Fuji Xerox Confident Colour can help you delight customers, produce more jobs, reduce your costs and grow your business.

Fuji Xerox Consulting Expertise

Beyond our technology, we also offer the Fuji Xerox Confident Colour program lets you draw on a wealth of expertise from our team of highly skilled colour consultants. More than 12 Fogra certified Digital Print Experts in Australia are on hand to provide access to customised consulting services on a full range of colour management topics to ensure that you achieve the best possible colour output from your many devices.

Business Development that helps you achieve the results you desire

We also offer the Fuji Xerox Digital Colour Management Certification program—an e-learning course designed to build critical colour skills for your business. The online program helps to bring everyone in your organisation to a mutual understanding of digital colour so that you can produce consistently profitable output.

Technology and software to deliver consistently vibrant images

The Color J75 Press achieves advanced image quality that satisfies even the most demanding customers with an innovative set of options — all designed to produce outstanding, accurate, repeatable quality. It is recognised for outstanding colour quality with Fogra certification, as well as being licensed by PANTONE® for spot color matching to the PANTONE® MATCHING SYSTEM, PANTONE Goe™ and PANTONE PLUS.

Partnerships with some of the leading names in the industry, such as CGS-ORIS and EFI, allow you to be sure that your offset and digital business work together seamlessly and deliver matching, outstanding colour. Colour Managed Workflow Solution, powered by ORIS, is a software/hardware package that helps to provide an accurate match between:

- Proofs and prints
- Prints and reprints
- Digital prints and offset prints
- Wide Format (Proofing)
- Prints produced on different devices, in different locations, on different days.

Colour Managed Workflow Solution, powered by ORIS:

Colour output standardised across all output devices: inkjet, digital colour presses and offset lithography. All prints visually match and can be verified for compliance with print standards; including ISO 12647.

**A Perfect Match —
Colour Managed
Workflow Solution,
Powered by ORIS**



Features that Deliver Productivity, Quality, and Reliability

A surprising host of options, outstanding productivity, and automation. Whether you're new to digital colour or upgrading your current capabilities, the Color J75 Press has features that provide the ability to say yes to more and more of your customers' most demanding jobs and to produce them with outstanding quality and increased profit.

Take a closer look inside and out and you'll see how the Color J75 Press is built to give you reliable performance, exceptional media handling, customer-pleasing quality and outstanding productivity from start to finish.

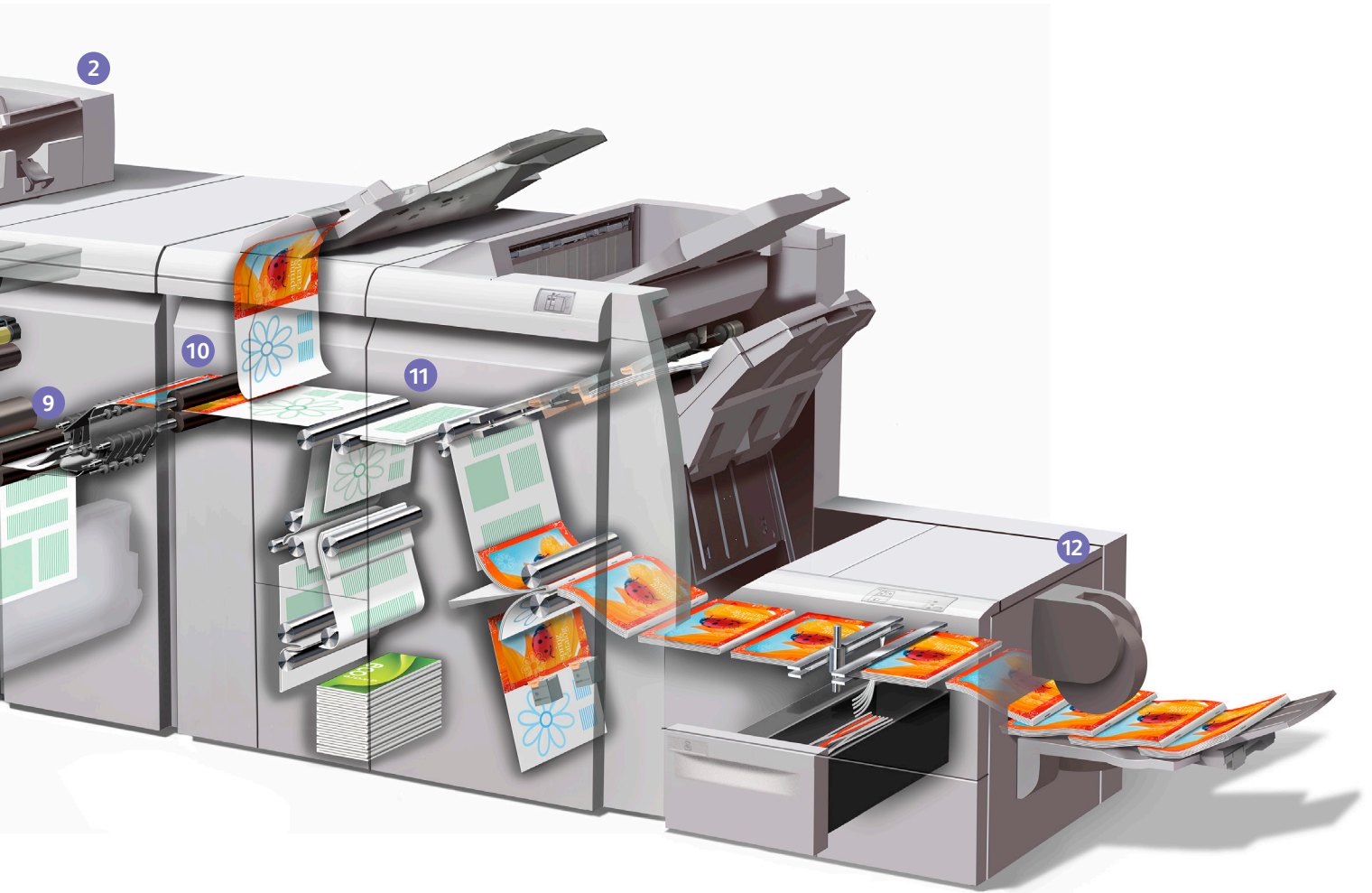


- 1 User Interface:** Easy to use, offering tremendous flexibility, while providing clear operator information and control over critical issues such as alignment and registration with the SIQA suite of tools. It lets you create and store custom paper profiles for repeated use.
- 2 Scanner:** The document handler holds up to A3 size originals. Automated duplex scanning at a resolution of 600 x 600 dpi at up to 200 ipm, and copying at 2400 x 2400 dpi at speeds up to 76 ppm through the Duplex Automatic Document Feeder.
- 3 Oversized High-Capacity Feeder (shown):** For larger stocks, choose one or two robust production paper trays each holding 2,000 sheets of coated or uncoated media.

Reliable paper movement prevents mis-feeds. This production-class feeder has four blowers, an advanced roller system, and a centre registration system.

High-Capacity Feeder (not shown): Optional high-capacity feeder holds up to 2,000 sheets of paper.
- 4 Front to Back Registration:** Contact Image Sensor provides adjustments to deliver ± 1 mm front to back registration.
- 5 Load-While-Run Toner:** Provides longer print runs and enhanced productivity. Two black replaceable toner units keep replenishment intervention to a minimum and productivity to a maximum.

Replaceable units for toner, drum rolls, fuser and waste toner bottle raise uptime to all-time highs.
- 6 Image Quality:** 2400 x 2400 dpi resolution. The self-cleaning Corotron assembly offers improved productivity and image quality.



- 7 Paper Path:** Straight, simple paper path increases reliability.
- 8 Three Standard Paper Trays:** Along with the bypass tray, holds 1900 sheets of paper.
- 9 Smart Decurler Module:** You get outstanding productivity in your finishing equipment because this robust post-fuser decurler with two rollers and bars ensures that sheets are flat. The “smart” decurler built into the paper path takes into consideration the side, the toner coverage and the humidity and applies the most appropriate pressure to ensure the flattest output.

- 10 Intelligent Fuser:** Assign a dedicated sheet size to the fuser. The press intelligently detects job and fuser setting mismatches, minimising waste and saving time.
- 11 Inline Spectrophotometer:** An integrated spectrophotometer in the paper path automates functions such as calibration and destination profiling.

- 12 SquareFold® Trimmer Module:** Attach Finisher D4 with Booklet Maker for greater versatility and enhanced output. This optional module enables face trimming and square folding for higher quality booklets and brochures.
- 13 Optional Finishers:** Produce more revenue generating applications including coated paper inline with a suite of optional finishers.

Finisher D4 with optional folder, Finisher D4 with Booklet Maker and optional folder, SquareFold® Trim Module, GBC AdvancedPunch and High-Capacity Stacker. Paper tray capacities measured using 80gsm paper.

Capabilities that Give You More

As you move into higher monthly print volumes and heavier weighted paper stocks, the Color J75 Press moves you to the head of the pack.

Producing jobs on stocks up to 300 gsm expands your creativity without slowing your productivity. Do more great work faster, leveraging maximum print speed with excellent print quality.

Run heavyweight stocks and meet tight timelines

There's no doubt that heavyweight stocks make a big impression in applications ranging from business cards to brochures. The Color J75 Press provides automatic duplexing on supported heavyweight stocks up to 300 gsm and delivers maximum productivity and maximum flexibility to take on demanding jobs without manual intervention. You get the same exceptional image quality across heavyweight and lighter weight stocks so you can be confident that prints look the way you want them.

Specialty media is one of our specialties

To take full advantage of the exceptional media latitude Color J75 Press, Fuji Xerox offers specialty media for a wide variety of custom applications such as Premium Never Tear synthetics, pre-die-cut stock, DocuMagnets and more.

Adding creative, personalised content to heavyweight specialty stock gives you an unbeatable combination that creates the type of high-value applications that deliver the ROI your customers expect.

For more information on our specialty media, visit www.fxs.com.au or speak to your Fuji Xerox Supplies representative today.

Advanced scanning

The scanner on the Color J75 Press gives you new ways to create and collaborate. Scanning options, such as scan-to-Microsoft® Word/Excel and scan-to-email, give your customers instant access to digital proofs. You can also walk up and easily archive hard copy or create booklets in minutes. Automated duplex scanning at a resolution of 600 x 600 dpi and copying at up to 76ppm and at 2400 x 2400 dpi delivers great colour with ease — all at speeds up to 200 ipm.

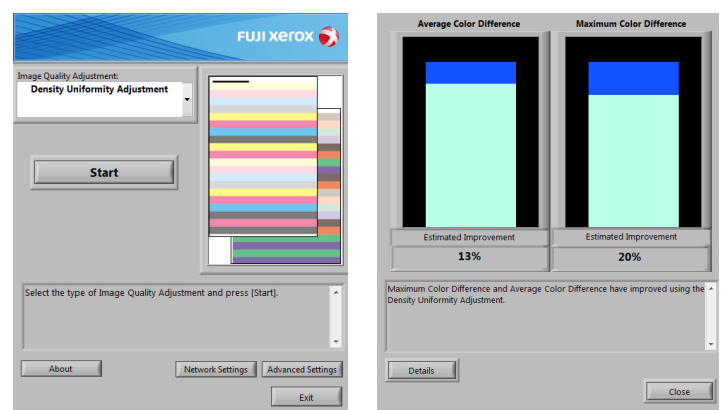
It can even handle larger paper sizes up to A3, saving you the time and effort of multiple scans for a single oversize document or image.

Totally secured

The Color J75 Press helps to keep your business protected from unwanted access. Sophisticated hard disk encryption prevents your data from getting into the wrong hands, while image overwrite features clear all traces of document image data by overwriting the hard drive with dummy data.

SIQA - putting you back in control

Semi-automatic press controls bring the power back to the operator. The Simple Imaging Quality Adjustment toolset helps to reduce engineer callouts by allowing the operator to perform registration and density variation adjustments, using printouts straight from the your Color J75 Press. Help to reduce reprints and produce documents that meet the standards you would expect from a higher class digital printer.



*Example only. Results may differ depending on the printer

A big difference between you and your competitors

Beyond the tremendous productivity that is built into the Color J75 Press, we offer a range of solutions that empower you to produce more high value jobs and streamline your operations to maximise your profit

More High Value, High Profit Jobs

One of the things that undeniably drives up the value of the application you provide to your customers—and they provide to theirs—is personalisation. Variable data printing (VDP), integrated multi-channel communications, and other marketing-focused services that use relevant, personalised communications and response-based campaign optimisation, are dominating the agendas of marketing professionals and their service providers.

Fuji Xerox offers a range of software tools from desktop, through server to off-site cloud solutions to enable you to add personalisation to your documents and communications—such as a customer's name, address, special offers, QR codes, even personalised images.

Our unique software solutions, allow you to add impact to a wide variety of communications with a minimal amount of time and effort, enabling the most productive output possible.

- FreeFlow Variable Information Suite
- XMPie
- GMC

Connect with your customers' worlds while streamlining your own

The Internet has fundamentally changed the way we do business and with more than 94% of Australia online it's a sales channel that shouldn't be ignored.

Fuji Xerox has a range of Web-to-Print software solutions for creating and managing online stores and marketing portals. With built-in prepress automation, solutions like XMPie StoreFlow enable the efficiencies of a truly automated, touch-less workflow.

More Versatility, More Control

StoreFlow enables end-users to easily upload and order their own static documents, or select and order variable documents from a storefront catalog. Customers can also intermix both variable and static pages within the same document, enabling a rich set of products from flyers and brochures, to booklets and more. Adding personalised covers, dynamic tabs, and other customised options allows for unprecedented versatility and added value in fulfilling the production of customer orders.

Built for Growth

With the XMPie heritage of robust solutions and innovations in the areas of Web-to-Print, dynamic publishing and cross-media marketing solutions, customers can be assured of a cost-effective path to scale operations as their business grows.

- FreeFlow Web Services
- XMPie uStore

Reliability your business can depend on*

Online Support

Our comprehensive support website will provide your organisation with around-the-clock assistance in a fast, efficient and self-directed manner.

Simply visit www.fujixerox.com.au/support.

Telephone Support

Our Sydney based Customer Support Centre and Technical Support Centre, with highly trained Fuji Xerox representatives,

are available to help you troubleshoot technical issues over the phone – helping you get up and running faster.

Call us on 1800 028 962.

On-site Support

When your problems require a greater level of assistance, our on-site field staff are available and fully equipped with the knowledge and tools to provide complete service for your Fuji Xerox solution, quickly and professionally.

*Available with the Fuji Xerox Support Agreement

Feeding and Finishing Capabilities that Grow with your Business

Productivity from start to finish. The Color J75 Press gives you the choices you need to make anything from coated brochures, newsletters, presentations, direct mail, booklets — and more delighted, loyal customers. And to do it all with the productivity that can strengthen your bottom-line and grow your business.



1

Oversized High-Capacity Feeder: Adds capacity plus up to two additional media selection points for large and heavyweight media and high-value applications. Available in 1 and 2 tray configurations.

2

GBC® AdvancedPunch: Lets you create professionally bound documents in-house by combining printing, punching and collating into one convenient step.

3

High Capacity Stacker: 5,000 sheet stacking for long production runs.

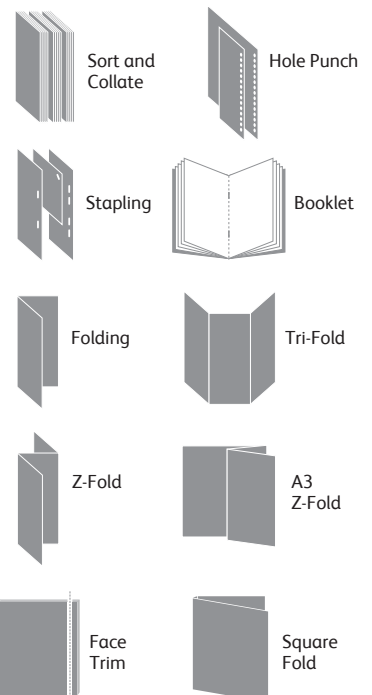
4

Finisher D4 (available with or without booklet maker): This finishing module enables coated booklets, brochures and bi-fold mailers, as well as stacking, stapling and hole punching. It also includes an interposer input tray. Even more versatility can be obtained with the addition of the optional tri-fold, Z-fold and A3 Z-fold module for this finisher.

5

SquareFold® Trimmer Module: Enhances the power of the Light Production C Finisher with booklet maker with highly desired features, such as square fold of cover sheets and face trimming to produce booklets.

Adding the perfect finish to any creative idea is easy with a wide variety of options.



Print Servers that Produce More Work with an Easier Workflow

We offer a choice of print servers, so you're sure to find one that fits your workflow. They all put a variety of colour tools, workflow capabilities, processing speed and sophisticated colour management controls at your fingertips.

Colour Workflow Software

Each server is designed to meet a specific set of workflow and application requirements. Your Fuji Xerox representative will help you choose the one that best suits your needs.



FreeFlow® Print Server²



EX Print Server,
Powered by Fiery®

Maintain design integrity with a PDF workflow

The Adobe® PDF Print Engine (APPE) — supported by the FreeFlow and EX Print Servers — enables a true, end-to-end, native PDF workflow. It leverages the same core technologies for colour handling and imaging as are used in the creation of graphically rich creative content — so that your final imaging results will be more predictable

and consistent. By removing subjective decision making from the prepress process, it also minimises the number of proofing rounds. Print providers can fulfil the designer's vision and the customer's requirements with fewer workflow steps — saving time and money, while delivering superior results.



Creative: Designer uses Adobe Creative Suite to create and soft proof content, saving it as a PDF.

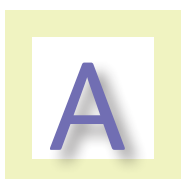


Prepress: PDF, along with instructions (which can be expressed as a JDF job ticket), is automatically processed without conversions.



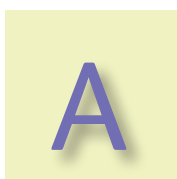
Production: Job is efficiently rendered at the FreeFlow or EX Print Server with Adobe PDF Print Engine and output to the Color J75 Press

Before



Transparency handling

After



Adobe PDF Print Engine (APPE)

The Adobe PDF Print Engine — or APPE — is the gold standard in PDF processing, producing PDF files that flow through your shop with a minimum of intervention. No more transparency problems. No more colour matching challenges. Instead, you will see faster turnarounds, more accurate results — and more returning customers.

Before



Spot colour callouts

After



Color J75 Press Specifications

Resolution

- Print/Copy: 2400 x 2400 dpi
- Scan: 200 x 200, 300 x 300, 400 x 400, 600 x 600
- 600, 300, 200 and 150 Clustered Dot, 200 Rotated Line Screen*, Stochastic Screen
- Process colours: Cyan, Magenta, Yellow, Black

Technology

- Automatic Color Quality Suite (ACQS)
- Load-while-run capability
- Advanced Registration Technology for tighter control
- Custom paper registration profiles
- EA low melt toner
- Simplified Image Quality Adjustment (SIQA) Toolset
- Replaceable units for toners, drums, fuser, charge corotron, waste bottle, staples
- Active decurling for heavy-weight media

Selected Colour/

Graphic Arts Credentials

- Fogra certification, PANTONE® Matching System, PANTONE Goe™, PANTONE PLUS, Adobe PDF Print Engine*

Integrated Scanner

- Colour scanner
- Single-pass duplex scanning
- Scan to a variety of output options
- 250-sheet capacity
- Up to 200 ipm (Colour and Black and White)
- Originals up to A3 in weights from 38gsm to 200gsm

Productivity/Print Speeds

J75

- | | |
|--------------|-----------------------|
| • Duty Cycle | 450,000 |
| • A4 | 76 ppm (64 – 300 gsm) |
| • A3 | 35 ppm (64 – 300 gsm) |
| • SRA3 | 31 ppm (64 – 300 gsm) |

Paper Flexibility/Weights

- Internal Trays 1-3
 - 550 sheets each
 - 64-220 gsm Uncoated
 - 106-220 gsm Coated

- Bypass Tray
 - 250 sheets
 - 64-300 gsm Uncoated
 - 106-300 gsm Coated
- Paper types
 - Coated and uncoated papers, bright papers, carbonless paper, DocuCard, labels, business cards, glossy brochures, window decals, durable/synthetic papers, greeting cards, polyesters and custom solutions
- All trays run coated stock

Paper Format/Sizes

- Maximum sheet size all trays: SRA3/330 x 488 mm
- Maximum print image area: 323 x 480 mm
- Maximum copy image area: 297 x 432 mm
- Minimum paper size trays 1-3: 140 x 182 mm
- Minimum paper size bypass: 100 x 148 mm
- Minimum paper size OHCF: B5/176 x 250 mm

Paper Capacity and Handling

- 1,900 sheets up to SRA3 standard via three internal trays and bypass tray
- Maximum paper capacity: 5,900 sheets SRA3 via standard trays and two Oversized High-Capacity Feeders (optional)
- Two-sided printing: Automatic up to 300 gsm coated and uncoated (Oversized High Capacity Feeder recommended)

Options

- Oversized High-Capacity Feeder
 - 64-300 gsm uncoated
 - 106-300 gsm coated
 - 182 x 250 mm/B5 to SRA3/330 x 488 mm
 - Auto duplex up to 300 gsm coated and uncoated
 - One or two Tray Module: 2,000 sheets or 4,000 sheets
- GBC AdvancedPunch
 - Multiple popular punch configurations available in A4 size
 - 75-220 gsm Uncoated
 - 106-220 gsm Coated
- Finisher D4
 - 500-sheet top tray
 - 3,000-sheet stacker tray
 - Multi-position stapling, coated and uncoated paper, up to 50 sheets

- Stapling, coated and uncoated, up to 100 sheets
- 200 sheet interposer for pre-printed and full bleed sheets
- Optional folding module for tri-fold and Z-fold
- Finisher D4 with Booklet Maker
 - All features of Finisher D4
 - Coated/uncoated booklet bi-fold or saddle-stitched booklets
 - Up to 25 sheet (100 page booklet)
 - Optional folding module for tri-fold and Z-fold
- SquareFold® Trimmer Module
 - Square fold up to 25 sheets
 - Face trim between 2-20 mm in 0.1 mm increments
 - Paper weights 64-300 gsm coated and uncoated
- High-Capacity Stacker
 - 500-sheet top tray
 - 102 x 142 mm to SRA3
 - 5,000-sheet main tray
 - 182 x 257 mm to SRA3
- Foreign Interface Kit
 - The Foreign Interface Kit enables the connection of external devices such as auditorium or coin-op devices. This will perform in copy and print modes.

Choice of Print Servers

- FreeFlow® Print Server
- EX Print Server, Powered by Fiery®
- Colour Managed Workflow Solution, Powered by ORIS®

Electrical

- Base configuration: 200-240 VAC, 50/60 Hz, 15A
- Other modules: Additional electrical required for print server and feeding/finishing devices: 200-240 Volts, 10A, 50Hz

Printer Dimensions

- Base printing system (with Bypass Tray fully extended and without Print Server and/or feeding/finishing devices)
 - Height: 1,372 mm
 - Width: 1,714 mm
 - Depth: 777 mm

* Depending on print server

Customer Expectation Document (CED)

For detailed product specifications, optimum performance parameters and service clearances refer to the Customer Expectation Document.

Descriptions in this material, product specifications and / or appearances are subject to change without prior notice due to improvements. Please note that the product colour appears differently from the actual colour as a result of properties of papers or printing ink. Windows and Windows NT are registered trademarks of Microsoft Corporation. NetWare is a registered trademark of Novell, Inc. in the United States. Macintosh, Mac OS and Ether Talk are trademarks of Apple Computer, Inc. PostScript is a registered trademark of Adobe Systems Incorporated in each country. HP-GL is a registered trademark of Hewlett-Packard Company. Other company names or product names are registered trademarks or trademarks of each company.

Spares for the standard configuration of installed machines is supported for up to 7 years from the date of the end of machine production.

For more information or detailed product specifications, please call or visit us at
Fuji Xerox Australia Pty Ltd. ABN 63 000 341 819.
101 Waterloo Rd, Macquarie Park NSW 2113.
Phone (02) 9856 5000 Fax (02) 9856 5003

13 14 12

<http://www.fujixerox.com.au>



Reproduction Prohibitions Please note that reproduction of the following is prohibited by law: Domestic and overseas bank notes and coins, government-issued securities, national bonds and local bond certificates. Unused postage stamps and post cards. Certificate stamps stipulated by law. The reproduction of works for copyright purposes (literary works, musical works, paintings, engravings, maps, cinematographic works, photographic works, etc.) is prohibited except when they are reproduced personally, at home or within limited range according to the above. This product is equipped with an anti-counterfeit feature. This feature is not intended to prevent illegal reproduction. Be extremely careful about the management of equipment used.



For Your Safe Use

Before using the product, read the Instruction Manual carefully for proper use. Use the product with an appropriate adequate power source and voltage displayed. Be sure to establish a ground. In the case of a failure or short circuit, an electric shock may result.

FUJI XEROX