

DocuCentre-IV  
C2265 N  
C2263 N



# DocuCentre-IV C2265 N / C2263 N Digital Colour Multifunction Device

Beautiful colour, great results.

# A new and efficient workplace

Fuji Xerox understands that flexibility and simplicity are the key to an efficient workplace. The new DocuCentre-IV C2265 N / C2263 N multifunction colour printer fits any office, offering you a host of versatile functions for an entirely new work experience.



DocuCentre-IV C2263 N with four 500-sheet paper trays and optional Finisher-B1

# A robust and flexible multifunction device

To meet the growing needs of your business, the DocuCentre-IV C2265 N / C2263 N is specifically designed for scalability. As your business expands and printing requirements become more sophisticated, you can easily add functionality and productivity enhancing options.



1  
Optional  
Stand



2  
Optional integrated  
stapler finisher



3  
Four 500-sheet paper trays  
adjustable up to A3

4  
Choose basic features like staple and hole punch (optional), or advanced capabilities to produce saddle-stitched booklets (unfolded)

# Streamline your business processes

## Dramatically increase your workflow efficiency.

Cutting edge scanning functionality opens the door to better ways of getting work done. Scan to Email quickly distributes documents to multiple email addresses. Store files on the device, or in a personal directory. You can also scan documents to network folders, FTP sites and fax servers right from the device.

**Store to Folder** feature allows you to scan to a folder on the printer's hard drive to reprint on demand or retrieve via a web browser. Documents stored on the hard drive are displayed as thumbnails and up-close previews on the device's touchscreen.

## Easy archiving, organising and searching.

With scan to searchable PDF\*, you can create a fully text-searchable file and integrate it into your workflow process in one easy step.

\* Optional.

## Significantly smaller scan files.

The latest scan-export compression technologies\* reduce traffic on the network and accelerate document delivery.

\* Optional.

## Walk-up print function.

Print from and scan to any USB memory device\* for faster document delivery when you're not at your computer.



\* Optional.

**To speed up copying and faxing** an express (simple) copy and fax feature displaying only the basic settings is available. This is provided in addition to the normal features.

## Easy on the environment

### The unique "air flow design"

reduces the number of cooling fans needed to maintain optimum operating temperatures. This saves energy and cuts noise levels to just 3.3 B during standby. The noise level during operation is only 6.4 B. Even when situated right next to your desk, you won't be disturbed by this incredibly quiet device.

### Smart Energy Management Technology.

Our innovative Smart Energy Management Technology better manages energy usage by only using what is necessary, when it's necessary. This enables the device to activate only the modules required by the user, saving energy and reducing CO<sub>2</sub> emissions. What's more, offices will enjoy a much quieter environment.

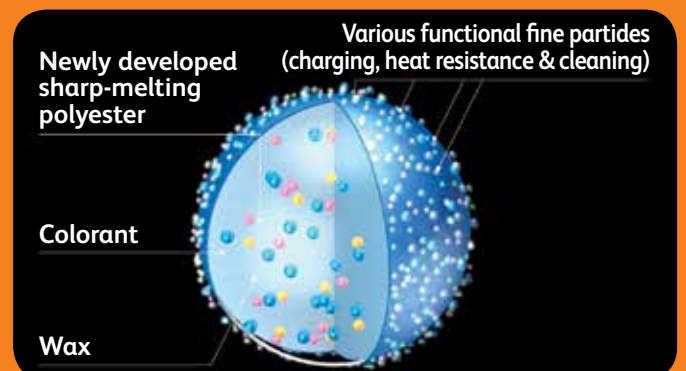
### Enjoy fast recovery from sleep mode – no waiting required!

The DocuCentre-IV C2265 N / C2263 N can recover from the sleep mode in just 4 seconds. This really is Smart Energy Saving! To save even more power, the device can be set to sleep mode, yet initialise in moments whenever it is required.

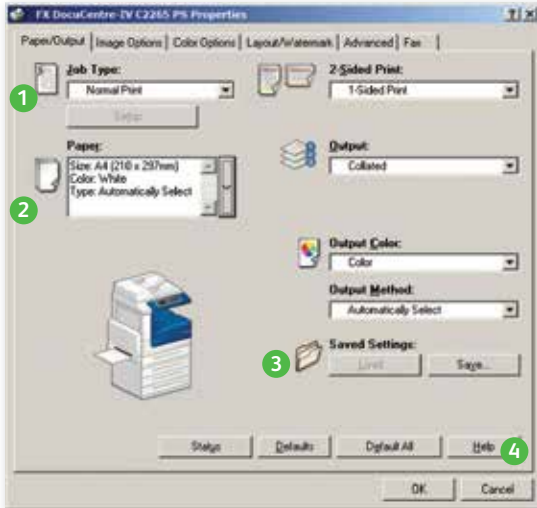
### Promoting the adoption of biomass plastic.

Fuji Xerox is proud to promote the use of biomass plastic, comprising more than 50% of plant-derived resin (corn), used in specific device parts. This helps to reduce the levels of CO<sub>2</sub> emissions.

**EA-Eco Toner.** This Emulsion Aggregation (EA) Ultra Low-Melt toner achieves a fusing temperature more than 20 °C lower than conventional EA toner, reducing power consumption during fusion, as well as achieving a brilliant glossy output even on ordinary paper.



**WHQL certified PCL and PostScript® print drivers** provide a consistent, easy-to-use interface for end users that can greatly simplify your printing operations.

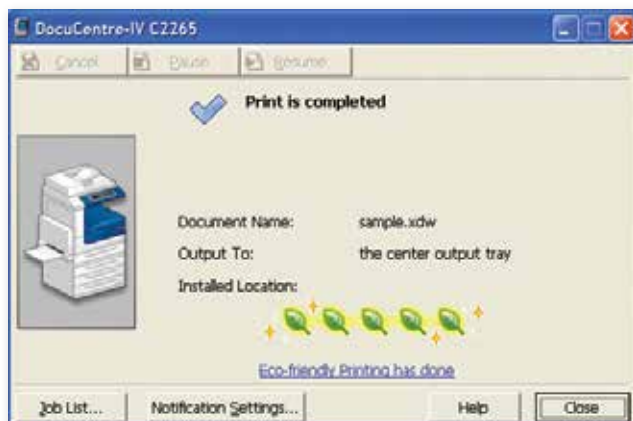


- 1 Drop down menu for secure print, fax, save to mailbox and more
- 2 Paper selection summary window
- 3 Favourite print settings
- 4 Help function for feature descriptions and driver assistance

**A truly universal print driver.** Xerox Global Print Driver® lets IT administrators install, upgrade and manage Fuji Xerox and non-Fuji Xerox devices from a single driver. It provides a consistent, easy-to-use interface for end users, reducing the number of support calls, and simplifying print services management.

**Users can analyse the environmental impact of their print operations** by checking the ecological rating display on the document monitor\*. This function displays up to five leaves to indicate how environmentally friendly the print settings are.

\* The document monitor is software that is installed on the computer. It can be downloaded from the Fuji Xerox website.



**Customise your print driver settings** for economy and efficiency. For example, set two-sided printing or choose N-up for printing multiple pages on a single sheet as your default.

**Save time by storing the settings of frequently printed documents** as favourites in your print driver. Settings include paper sizes, covers, duplexing, finishing and more.

**Mac OS X now supported as standard.** By installing the included non-PostScript printer driver, Mac OS X\* can be supported by the device, so that users can output office documents from Macintosh computers.

\* Some functions such as image quality adjustment are restricted. The Adobe® PostScript® 3™ Kit is required to make full use of the printing functions.

**Envelope printing is now easier than ever** when sending documents such as notices and invoices. Simply select the “envelope type” function and enter the required settings, such as size, correct paper tray selection, and image rotation. Envelopes can be loaded in the bypass tray, and the envelope type selected in the paper size settings.

**Forwarding received fax documents.** When faxes are received they can be stored in the device folders, and any required documents can be printed after checking thumbnail previews. This cuts waste and reduces paper use. Documents received in a folder can also be forwarded by fax, printed, and sent via e-mail, FTP, or SMB.

**Faxes can be sent directly from PCs.** This reduces the volume of paper required in an office and eliminates the need for unnecessarily printing faxes.

**Eliminating spam faxes.** If you do not want to receive faxes from specific or unlisted numbers they can be rejected. This handy function lets you eliminate indiscriminate direct mailing and wasteful printing of unwanted faxes.

**IP faxing or FoIP** offers a more cost efficient way of doing business. Faxes are sent and received through an IP-based network such as the internet. Faxes can be routed directly to an email account to conserve energy and paper.

# Creating efficient work environments

Supporting your convenience and work efficiency in various types of situations.

## Changing your work by multifunction device and mobile terminal linkage

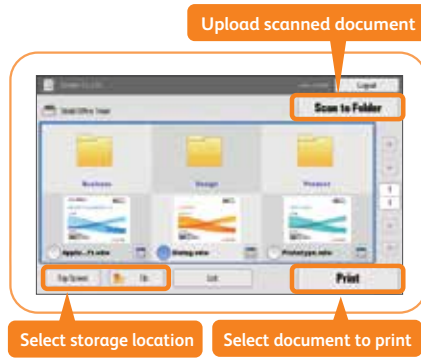
### Secure anywhere and anytime

Being able to view and use various office documents when you are outside of the office or on a business trip makes your job faster and more efficient.

Working Folder is a cloud service that enables you to securely access digitized business documents from anywhere, so as long as you have an internet connection. Documents on the cloud can be operated in DocuWorks Desk. It can also be viewed and operated from such devices as smartphones. The control panel of multifunction devices can also be used to print documents in Working Folder and upload scanned documents.

Note: A contract for the Working Folder service is required to use this function.

Note: Thumbnails can be displayed for DocuWorks documents, PDF documents, and TIFF images, but may not be able to be displayed in some cases due to document security settings, etc.

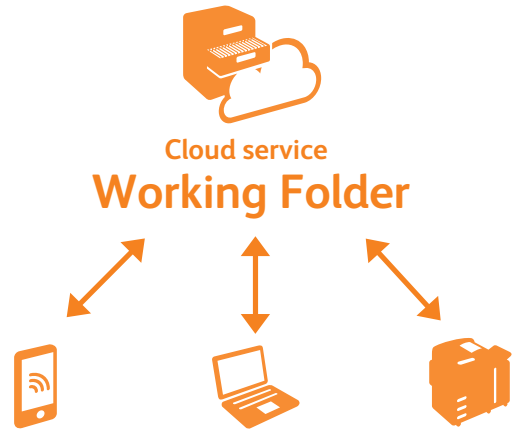


based on IP addresses or mobile terminal. It also has a variety of management functions such as a log management function and user management function. This enables you to easily establish a secure and safe environment for sharing information both inside and outside the company.

### Automatic uploading of faxes and scanned documents

Received faxes and scanned data are automatically uploaded to Working Folder. You can quickly respond back to your clients because you are quickly notified by automatically sent e-mails.

## Mobile and cloud service linkage



Use a smartphone outside the office to view, register, and download documents, and upload photos and video.

Use the Web browser on a PC or DocuWorks Desk to search and drag and drop files.

Use a multifunction device to

- Download and print
- Automatically register received fax documents
- Register scanned documents.

### Supporting smooth and secure communication with your clients

Working Folder enables you to securely share information with people from outside your company, such as your clients. In addition to access privileges and data encryption, it provides the security functions required particularly by companies using a cloud service, such as access restrictions

## Security at every level

**Secure print** helps prevent unauthorised viewers from seeing documents by holding jobs in the print queue until the user is authenticated.

**Image overwrite** security feature clears or "overwrites" all traces of any document image data remaining on the hard drive after a print, copy, scan or fax job (when enabled).

**Hard disk encryption** helps ensure that unauthorised users can't access stored documents.

**IPv6 support** includes full enablement of the new IPsec standard.

**Internal security** provides an additional measure of security, providing IP filtering, domain filtering and port blocking.

**Device authentication** restricts access to copy, print, scan and fax features by validating user names and passwords before use. Audit Log capabilities let you know who sent what, and when.

**Embedded authentication enhances security and increases convenience.**

The DocuCentre-IV C2265 N / C2263 N

includes an authentication function so that unauthorised users are restricted from using the device. Each user's history can be collected from the job history record. By adding an embedded card reader\* to the device, users can employ swipe card authentication for extra security. Use of the device can be restricted to specified users and linked with specific functions to enhance security and improve convenience for authorised users.

\*An external or internal type IC Card Reader is available.

# DocuCentre-IV C2263 N / C2265 N Functions & Specifications

## Basic Specifications / Copy Function

Item	Description		
	DocuCentre-IV C2265 N	DocuCentre-IV C2263 N	
Type	Console		
Memory Capacity	2 GB (Maximum : 2 GB)		
Hard Disk Capacity*1	160 GB or larger (Usable space : 100 GB)		
Colour Capability	Full colour		
Scan Resolution	600 x 600 dpi		
Print Resolution	600 x 600 dpi		
Warm-up Time	44 seconds or less, or if the main power is ON, 33 seconds or less (At room temperature 20°C)		
Original Size	Maximum of 297 x 432 mm (A3, 11 x 17") for both Sheet and Book		
Paper Size	Max.	A3, 11 x 17"	
	Min.	A5 Bypass Tray : Postcard (100 x 148 mm) and Quadrate NO.3 Envelope (120 x 235 mm) when using Bypass Tray	
	Image Loss Width	Lead edge 4 mm or less, trail edge 2 mm or less, right / left edge 2 mm or less	
Paper Weight*2	Paper Tray	60 to 256 gsm	
	Bypass Tray	60 to 216 gsm	
First Copy Output Time	B / W : 6.5 seconds (A4 LEF / Monochrome priority mode) Colour : 8.1 seconds (A4 LEF / Colour priority mode)		
Continuous Copy Speed*3	A4 LEF / B5 LEF	Colour : 25 ppm B / W : 25 ppm	Colour : 20 ppm B / W : 20 ppm
	A4	Colour : 19 ppm B / W : 19 ppm	Colour : 16 ppm B / W : 16 ppm
	B5	Colour : 14 ppm B / W : 14 ppm	Colour : 11 ppm B / W : 11 ppm
	B4	Colour : 16 ppm B / W : 16 ppm	Colour : 13 ppm B / W : 13 ppm
	A3	Colour : 14 ppm B / W : 14 ppm	Colour : 11 ppm B / W : 11 ppm
Paper Tray Capacity*4	Standard	4T Model : 500 sheets x 4 Tray + For Bypass Tray 45 sheets 2T Model : 500 sheets x 2 Tray + For Bypass Tray 45 sheets	
	Max.	4T Model : 2045 sheets 2T Model : 1045 sheets	
Output Tray Capacity*4*5	Upper Center : 250 sheets (A4 LEF) Lower Center : 250 sheets (A4 LEF)		
Power Source	AC 220-240 V + / - 10%, 10 A, 50/60 Hz common		
Power Consumption	1.76 kW or less (AC 220 V + / - 10%) 1.92 kW or less (AC 240 V + / - 10%) Sleep Mode : 2.3 W or less (AC220 V-240 V)*6 Low Power Mode : 81 W or less Ready Mode : 120 W or less		
Dimensions	4T / 2T Model : W 585 x D 640 x H 1132 mm		
Weight*7	4T Model : 115 kg 2T Model : 107 kg		

\*1 : The Storage device capacity is not totally available for customers.

\*2 : Use Fuji Xerox recommended paper. Documents may not be printed correctly depending on usage conditions.

\*3 : The speed may be reduced due to the image quality adjustment.

\*4 : 80 gsm paper.

\*5 : Offset Catch Tray function is off.

\*6 : Sleep mode is not set at the time of shipment from the factory.

\*7 : Excluding Toner Cartridge.

## Scan Function

Item	Description
Type	Colour Scanner
Scan Resolution	600 x 600 dpi, 400 x 400 dpi, 300 x 300 dpi, 200 x 200 dpi
Scanning Speed*1	B / W : 55 ppm Colour : 55 ppm (Fuji Xerox standard paper (A4 LEF), 200 dpi, to confidential box.)
Interface	Ethernet 100 BASE-TX / 10 BASE-T

\*1 : The scanning speed varies depending on the documents.

## Fax Function (Optional)

Item	Description
Send Document Size	A3, 11 x 17", Long document (Maximum length 600 mm)
Recording Paper Size	Max. : A3, 11 x 17" Min. : A5
Transmission Time	2 seconds and more but fewer than 3 seconds*1
Transmission Mode	ITU-T G3
Applicable Lines	Telephone subscriber line, PBX, Fax communication (PSTN), Max. 3 ports*2

\*1 : When A4 size document with approximately 700 characters is transmitted in standard image-quality (8 x 3.85 lines / mm) and in high-speed mode (28.8kbps or faster, JBIG). Only indicates the time for transmitting the image information and does not include the communication control time. The total communication time will vary depending on the contents of the document, the type of machine receiving the fax, and line condition.

\*2 : Maximum 3 lines can be connected. The number of ports refers to the number of channels available for transmission.

## Print Function

Item	Description	
Type	Built-in type	
Continuous Print Speed*1	Same as the Basic Specifications / Copy Function	
Print Resolution	Output Resolution	600 x 600 dpi
	Data Process Resolution	Standard : 300 x 300 dpi High Resolution : 600 x 600 dpi
Page Description Language	Standard	PCL6, PCL5
Operating System*2	PCL6 Driver (Standard)	Windows® 2000 Windows® XP (32bit) Windows Server® 2003 (32bit) Windows Vista® (32bit) Windows Server® 2008 (32bit) Windows® 7 (32bit) Windows® 8 (32bit) Windows® 8.1 (32bit) Windows® XP Professional (64bit) Windows Server® 2003 (64bit) Windows Vista® (64bit) Windows Server® 2008 (64bit) Windows® 7 (64bit) Windows Server® 2008 R2 (64bit) Windows® 8 (64bit) Windows® 8.1 (64bit) Windows Server® 2012 (64bit) Windows Server® 2012 R2 (64bit)
	Mac OS X-Driver (Standard)	Mac OS X 10.5 / 10.6 / 10.7, OS X 10.8 / 10.9
Interface	Adobe® PostScript® 3 Driver (Optional)	Windows® 2000 Windows® XP (32bit) Windows Server® 2003 (32bit) Windows Vista® (32bit) Windows Server® 2008 (32bit) Windows® 7 (32bit) Windows® 8 (32bit) Windows® 8.1 (32bit) Windows® XP Professional (64bit) Windows Server® 2003 (64bit) Windows Vista® (64bit) Windows Server® 2008 (64bit) Windows® 7 (64bit) Windows® 8 (64bit) Windows® 8.1 (64bit) Windows Server® 2008 R2 (64bit) Windows Server® 2012 (64bit) Windows Server® 2012 R2 (64bit) Mac OS 9.2.2 Mac OS X 10.3.9 / 10.4.0 / 10.4.1 / 10.4.2 / 10.4.3 / 10.4.4 / 10.4.5 / 10.4.6 / 10.4.8 / 10.4.9 / 10.4.10 / 10.4.11 / 10.5 / 10.6 / 10.7, OS X 10.8 / 10.9
	Ethernet	100 BASE-TX / 10 BASE-T USB 2.0

\*1 : The speed may be reduced due to the image quality adjustment.

\*2 : Please refer to the Fuji Xerox website for the latest supported operating systems.

## Duplex Automatic Document Feeder

Item	Description
Original Size / Paper Weight	Max. : A3, 11 x 17", Min. : A5*1 38 to 128 gsm (In Duplex : 50 to 128 gsm)
Capacity*2	110 sheets
Feeding Speed (A4 LEF Simplex)	B / W : 20 ppm Colour : 20 ppm
Dimensions	W 560 x D 498 x H 125 mm
Weight	8 kg

\*1 : Nonstandard size single-sided mode : 125 x 85 mm.

\*2 : 64 gsm paper.

## Finisher-A1 (Optional)

Item	Description	
Type	Sort (Offset available) / Stack (Offset available)	
Paper Size	Max.	A3, 11 x 17"
	Min.	Postcard (100 x 148 mm)
Paper Weight	60 to 220 gsm	
Paper Capacity*1	Finishing Tray	[Without Stapling] A4 : 500 sheets, B4 : 250 sheets, A3 or larger : 200 sheets, Mixed Size Stacking*2 : 250 sheets [With Stapling] 30 copies
	Capacity	A4 : 50 sheets (90 gsm or less), B4 or larger : 30 sheets (90 gsm or less)
Staple	Paper Size	Max. : A3, 11 x 17" Min. : B5 LEF
	Position	Single stapling (Front / Angled)
Dimensions	W 559 x D 448 x H 246 mm	
Weight	12 kg	

\*1 : 64 gsm paper.

\*2 : When larger size sheets are stacked on top of smaller size sheets.

# DocuCentre-IV C2263 N / C2265 N Functions & Specifications

## Finisher-B1 (Optional)

Item	Description	
Type	Sort (Offset available) / Stack (Offset available)	
Paper Size <sup>*1</sup>	Max.: A3, 11 x 17" Min.: B5 LEF	
Paper Weight	60 to 220 gsm	
Paper Capacity <sup>*2</sup>	[Without Stapling] A4 : 2000 sheets, B4 or larger : 1000 sheets, Mixed Size Stacking <sup>*3</sup> : 300 sheets [With Stapling] A4 : 100 copies (1000 sheets), B4 or larger : 75 copies (750 sheets) [Booklet Finishing <sup>*4</sup> ] 50 sets or 600 sheets [Fold <sup>*4</sup> ] 500 sheets	
Staple	Capacity	50 sheets (90 gsm or less)
	Paper Size	Max.: A3, 11 x 17" Min.: B5 LEF
	Position	Single stapling (Front / Angled, Rear / Straight), Dual stapling (Parallel)
Punch <sup>*5</sup>	Number of Holes	2 / 4 hole punch, 2 / 3 hole punch (US Specifications)
	Paper Size	A3, 11 x 17", B4, A4, A4 LEF, Letter, Letter LEF, B5 LEF
	Paper Weight	60 to 200 gsm
Booklet Finishing <sup>*6</sup>	Capacity	Saddle Staple : 15 sheets, Fold : 5 sheets
	Paper Size	Max.: A3, 11 x 17" Min.: A4, Letter
	Paper Weight	Saddle Staple : 64 to 80 gsm, Fold : 64 to 105 gsm
Dimensions <sup>*6</sup>	W 657 x D 552 x H 1017 mm W 657 x D 597 x H 1087 mm (With Booklet Finisher)	
Weight	28 kg 37 kg (With Booklet Finisher)	

\*1 : Paper size is smaller than B5, and larger than A3, 11 x 17" can be output from the Center Tray.

\*2 : 64 gsm paper.

\*3 : When larger size sheets are stacked on top of smaller size sheets.

\*4 : The optional Finisher-B1 Booklet unit is required for features of saddle stapling / bi-folding. If the output after saddle stapling / bi-folding is not removed from the tray, the next job may not be output. The similar situation may happen to the smaller paper size as well.

\*5 : Optional 2 / 4 Hole Punch kit or optional Finisher-B1 2 / 3 Hole Punch kit (US Specifications) is required.

\*6 : Inner connector within the body is excluded.

## Side Tray (Optional)

Item	Description
Paper Capacity	100 sheets <sup>*1</sup>
Dimensions	W 353 x D 469 x H 198 mm
Weight	1 kg

\*1 : 64 gsm paper.

### Notes

- 1) If the storage media (such as hard disk drives) of the base unit fail, loss of received data, accumulated data, registered setting data, etc. may occur. In no event shall Fuji Xerox be liable for any damages whatsoever arising from loss of data.
- 2) Functional spare parts will be available for at least 7 years after the product is no longer manufactured.
- 3) The product specifications, appearance and other details in this catalog are subject to change without notice for improvements.

Other company names or product names are registered trademarks or trademarks of each company.

**Reproduction Prohibitions** Please note that reproduction of the following is prohibited by law : Domestic and foreign currencies, government-issued securities, and national bonds and local bond certificates. Unused postage stamps, post cards, etc. Certificate stamps stipulated by law. Reproducing works forming the subject matter of copyright (literary works, musical works, paintings, engravings, maps, cinematographic works, drawings, photographic works, etc.) is not permitted unless the reproduction is for the purpose of personal use, family use or other similar uses within a limited circle.



### For Your Safety

Before using the product, read the Instruction Manual carefully for proper use. Use the product with the power source and voltage specified. Be sure to establish ground connection. Otherwise, electronic shock may result in the case of a failure or short circuit.



For more information or detailed product specification, please call or visit us at

**Fuji Xerox Australia Pty. Ltd.**

101 Waterloo Road, North Ryde NSW 2113, Australia

Tel.61-2-9856-5000

<http://www.fujixerox.com.au/>