



# HP Latex 850 Printer

Increase production of outdoor/indoor applications



## Expand your outdoor/indoor application versatility

- Print on a wide media range—SAV, paper, wallpaper, PVC banner, film—direct to textiles for temporary indoor<sup>1</sup>
- Outstanding image quality with 6 colors, a wide color gamut, 4-pt text, and up to 1200 dpi resolution
- Outdoor prints achieve display permanence up to three years unlaminated and up to five years laminated<sup>2</sup>
- Offer vehicle graphics backed by warranties from HP, Avery Graphics, and 3M, including 3M™ MCS™ Warranty<sup>3</sup>

## See stunning image quality and high productivity

- See high-impact POP prints at up to 45 m<sup>2</sup>/hr; prints come out completely dry, ready for lamination, finishing
- Enjoy unattended productivity with dual-roll, roll-to-free fall, and roll-to-collector capabilities
- Produce double-sided<sup>4</sup> banners with minimal operator intervention; no need to rewind roll between sides
- Reduce maintenance time—replace printheads without a service call, no daily manual cleaning needed

For more information, please visit  
[hp.com/go/Latex850](http://hp.com/go/Latex850)

Find a comprehensive list of all latex compatible media along with finished color profiles and printer settings at  
[hp.com/go/mediasolutionslocator](http://hp.com/go/mediasolutionslocator)

## Build a healthier environment, inside and out<sup>5</sup>

- Reach new indoor spaces that solvent, UV can't like healthcare—water-based HP Latex Ink prints are odorless
- Healthier printing with HP Latex<sup>5</sup>—no special ventilation required,<sup>6</sup> no hazard warning labels or HAPs<sup>7</sup>
- Meet high standards—HP Latex Inks are UL ECOLOGO<sup>®8</sup> and GREENGUARD GOLD Certified<sup>9</sup>
- Create prints that meet AgBB criteria<sup>10</sup> and are rated A+ according to Émissions dans l'air intérieur<sup>11</sup>

<sup>1</sup> For best results, print textile applications on fabric that does not stretch. Performance may vary depending on media. Please consult your media supplier for compatibility details.

<sup>2</sup> HP image permanence estimates by HP Image Permanence Lab. Outdoor display permanence tested according to SAE J2527 on a range of media, including HP media; in a vertical display orientation in simulated nominal outdoor display conditions for select high and low climates, including exposure to direct sunlight and water; performance may vary as environmental conditions change. Laminated display permanence using HP Clear Gloss Cast Overlaminates, GBC clear gloss 1.7 mil hot laminate, or Neschen Solvoprint Performance Clear 80 laminate. Results may vary based on specific media performance.

<sup>3</sup> The 3M™ MCS™ Warranty is available to certified Graphics Manufacturers. For more information on registration and qualification requirements, refer to [3Mgraphics.com](http://3Mgraphics.com), or contact your 3M representative.

<sup>4</sup> For best results use blackout banner media intended for double-sided printing.

<sup>5</sup> Based on a comparison of HP Latex Ink technology to competitors with leading market share as of December, 2013 and analysis of published MSDS/SDSs and/or internal evaluation. Performance of specific attributes may vary by competitor and ink technology/formulation.

<sup>6</sup> Special ventilation equipment (air filtration) is not required to meet U.S. OSHA requirements. Special ventilation equipment installation is at the discretion of the customer—see the Site Preparation Guide for details. Customers should consult state and local requirements and regulations.

<sup>7</sup> HP Latex Inks were tested for Hazardous Air Pollutants, as defined in the Clean Air Act, per U.S. Environmental Protection Agency Method 311 (testing conducted in 2013) and none were detected.

<sup>8</sup> UL ECOLOGO® Certification to UL 2801 demonstrates that an ink meets a range of stringent criteria related to human health and environmental considerations (see [ul.com/EL](http://ul.com/EL)).

<sup>9</sup> GREENGUARD GOLD Certification to UL 2818 demonstrates that products are certified to GREENGUARD standards for low chemical emissions into indoor air during product usage. For more information, visit [ul.com/gg](http://ul.com/gg) or [greenguard.org](http://greenguard.org).

<sup>10</sup> HP WallArt printed on HP PVC-free Wall Paper and other prints on HP PVC-free Wall Paper printed with HP Latex Inks meet AgBB criteria for health-related evaluation of VOC emissions of indoor building products, see [umweltbundesamt.de/en/topics/health/commissions-working-groups/ausschuss-zur-gesundheitlichen-bewertung-von](http://umweltbundesamt.de/en/topics/health/commissions-working-groups/ausschuss-zur-gesundheitlichen-bewertung-von).

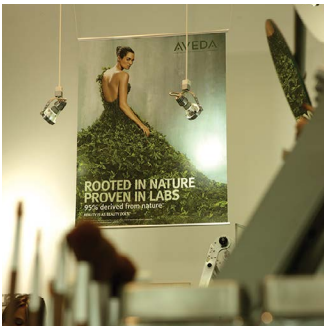
<sup>11</sup> Émissions dans l'air intérieur provides a statement on the level of emission of volatile substances in indoor air posing health risks if inhaled—on a scale from A+ (very low-emission) to C (high-emission).



## HP Latex Printing Technologies

HP Latex Inks are water-based inks that combine the best characteristics of solvent inks and water-based inks. You can obtain the outdoor durability and versatility, across all common media types used in sign and display applications, together with high quality, odorless prints, low maintenance, and the environmental advantages of water-based inks.

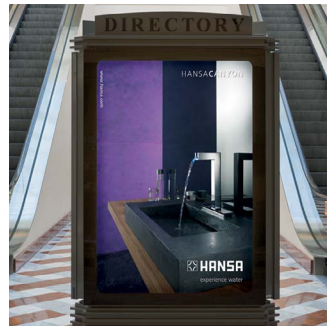
Prints made with HP Latex Inks are completely cured inside the printer to form a durable image that's ready for lamination, finishing, shipment, or display.



### Point of purchase posters

Reduce costs without compromising quality

- Great results on all types of paper, including low-cost uncoated papers and traditional offset papers



### Light boxes

Deliver high-value backlit applications

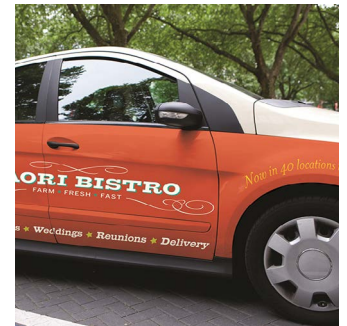
- Produce high-resolution prints up to 1200 dpi
- Vibrant, saturated colors
- Choose from a range of backlit printing materials: paper, film, polypropylene, and textiles<sup>12</sup>



### Outdoor and event banners

Produce images worthy of building the best brands

- Achieve high-quality results on self-adhesive vinyls and banners
- Offer outdoor display permanence up to three years un laminated, five years laminated<sup>13</sup>



### Vehicle wraps and graphics

Achieve fast turnarounds, even on urgent jobs

- Laminate right after printing—no need to wait for prints to dry
- Flexible ink layer conforms to complex surfaces

<sup>12</sup> Performance may vary depending on media—for more information, see [hp.com/go/mediasolutionslocator](http://hp.com/go/mediasolutionslocator) or consult your media supplier for compatibility details. For best results, use textiles that do not stretch. Performance varies by printer. HP Latex 360 and 850 Printers include an ink collector for printing on porous textiles. The HP Latex 3000 Printer requires the optional ink collector for porous textiles. For all other HP Latex printers, print on media that does not let the ink trespass onto the printer.

<sup>13</sup> HP image permanence estimates by HP Image Permanence Lab. Outdoor display permanence tested according to SAE J2527 on a range of media, including HP media; in a vertical display orientation in simulated nominal outdoor display conditions for select high and low climates, including exposure to direct sunlight and water; performance may vary as environmental conditions change. Laminated display permanence using HP Clear Gloss Cast Overlaminate, GBC clear gloss 1.7 mil hot laminate, or Neschen Solvoprint Performance Clear 80 laminate. Results may vary based on specific media performance.



## HP Latex 850 Printer

### Roll-to-free fall and roll-to-collector capabilities

- Roll-to-free fall and roll-to-collector capabilities let you start finishing while still printing the rest of the roll; both workflows can be combined with dual-roll capability

### Dual-roll capability

- Dual-roll capability lets you print two 1.52-m (60-inch) rolls side-by-side and take advantage of the printer's full production speed; the system accommodates rolls of varying widths and lengths

### Vast improvement in double-sided printing

- The double-sided capability<sup>14</sup> allows you to print double-sided banners with minimal operator intervention; the HP Optical Media Advance Sensor (OMAS) controls registration automatically; you can also save time—no need to rewind the roll between sides

### Increase application versatility with the ink collector

- Use the ink collector to print on porous materials and mesh



### Wallcoverings and canvas

Discover a new market opportunity

- Odorless prints meet high environmental standards—ideal for hotels, restaurants, schools
- Experience the easy-to-use HP WallArt solution, visit [hpwallart.com](http://hpwallart.com)<sup>15</sup>



### Temporary textiles<sup>16</sup>

Complement your business with new applications

- Print on a wide variety of textiles, including uncoated and natural textiles
- An easy-to-use solution compared to dye-sublimation techniques

## Eco Highlights

- Healthier printing with HP Latex—no special ventilation, no hazard warning labels or HAPs<sup>1</sup>
- Meet high standards—HP Latex Inks are UL ECOLOGO® and GREENGUARD GOLD Certified<sup>2</sup>
- Create prints that meet AgBB criteria and are rated A+ per Émissions dans l'air intérieur<sup>3</sup>
- A safer workplace—HP Latex Inks are non-flammable, non-combustible and nickel free<sup>4</sup>



<sup>1</sup> Based on a comparison of HP Latex Ink technology to competitors with leading market share as of December, 2013 and analysis of published MSDS/SDSs and/or internal evaluation. Performance of specific attributes may vary by competitor and ink technology/formulation. Special ventilation equipment (air filtration) is not required to meet U.S. OSHA requirements. Special ventilation equipment installation is at the discretion of the customer—see the Site Preparation Guide for details. Customers should consult state and local requirements and regulations. Contains no Hazardous Air Pollutants according to EPA Method 311.

<sup>2</sup> UL ECOLOGO® Certification to UL 2801 demonstrates that an ink meets a range of stringent criteria related to human health and environmental considerations (see [ul.com/EL](http://ul.com/EL)). GREENGUARD GOLD Certification to UL 2818 demonstrates that products are certified to GREENGUARD standards for low chemical emissions into indoor air during product usage. For more information, visit [ul.com/gg](http://ul.com/gg) or [greenguard.org](http://greenguard.org).

<sup>3</sup> HP WallArt printed on HP PVC-free Wall Paper and other prints on HP PVC-free Wall Paper printed with HP Latex Inks meet AgBB criteria for health-related evaluation of VOC emissions of indoor building products (see [umweltbundesamt.de/en/topics/health/kommissionen-working-groups/ausschuss-zur-gesundheitlichen-bewertung-von](http://umweltbundesamt.de/en/topics/health/kommissionen-working-groups/ausschuss-zur-gesundheitlichen-bewertung-von)). Émissions dans l'air intérieur provides a statement on the level of emission of volatile substances in indoor air posing health risks if inhaled—on a scale from A+ (very low-emission) to C (high-emission).

<sup>4</sup> Water-based HP Latex Inks are not classified as flammable or combustible liquids under the USDOT or international transportation regulations. Testing per the Pensky-Martins Closed Cup method demonstrated flash point greater than 110° C. Nickel free demonstrated according to testing conducted for HP Latex Inks to achieve UL ECOLOGO® Certification. UL ECOLOGO® Certification to UL 2801 demonstrates that an ink meets a range of stringent criteria related to human health and environmental considerations (see [ul.com/EL](http://ul.com/EL)).

**Please recycle large-format printing hardware and printing supplies.**

**Find out how at our website**

[hp.com/ecosolutions](http://hp.com/ecosolutions)

<sup>14</sup> For best results use blockout banner media intended for double-sided printing.

<sup>15</sup> Requires an HP WallArt account, Internet connection, and connected Internet-capable device. For more information, see [hpwallart.com](http://hpwallart.com).



<sup>16</sup> Performance may vary depending on media—for more information, see [hp.com/go/mediasolutionslocator](http://hp.com/go/mediasolutionslocator) or consult your media supplier for compatibility details. For best results, use textiles that do not stretch. Performance varies by printer. HP Latex 360 and 850 Printers include an ink collector for printing on porous textiles. The HP Latex 3000 Printer requires the optional ink collector for porous textiles. For all other HP Latex printers, print on media that does not let the ink trespass onto the printer.

## Technical specifications

<b>Printing</b>	Printing modes	For highly-saturated fabrics and backlits (250% ink density): Production Plus (10-pass bidirectional) – 27 m <sup>2</sup> /hr (290 ft <sup>2</sup> /hr) For fabrics and backlits (150% ink density) and high-quality indoor (100% ink density): Production Plus (6-pass bidirectional) – 45 m <sup>2</sup> /hr (484 ft <sup>2</sup> /hr) For outdoor billboards (70% ink density): Billboard (2-pass unidirectional) – 88 m <sup>2</sup> /hr (947 ft <sup>2</sup> /hr) For drafts (50% ink density): Draft (1-pass unidirectional) – 177 m <sup>2</sup> /hr (1905 ft <sup>2</sup> /hr)
	Print resolution	Up to 1200 x 1200 dpi
	Printheads	3 (cyan/black, yellow/magenta, light magenta/light cyan)
	Nozzles	10,560 per printhead
<b>Media</b>	Handling	Roll-to-free fall, roll-to-collector, roll-to-roll, dual-roll capability, ink collector for porous substrates, guided double-sided process
	Roll size	Up to 3.2-m (126-in) wide. Dual roll: up to 2 x 1.52-m (60-in) wide
	Roll diameter	Up to 25-cm (9.84-in) outside diameter
	Thickness	Up to 0.8 mm (31.5 mil)
<b>Dimensions (w x d x h)</b>	Printer: 573 x 166 x 166 cm (226 x 65 x 65 in) Shipping: 586 x 173 x 216 cm - 231 x 68 x 85 in.	
<b>Weight</b>	Printer: 1118 kg (2464 lb) Shipping: 1900 kg (4189 lb)	
<b>What's in the box</b>	HP Latex 850 Printer, HP LX610 printheads, 126-in spindles (x2), pneumatic gun, Original HP sample roll media, dual-roll spindles, HP webcam with USB cable, HP network switch, HP Scitex LX Printer Cleaning Kit, HP LX600 Scitex Maintenance Kit, maintenance & troubleshooting guide, ink collector kit, spare ink collector foams (x16), media edge holders (x4), documentation software, Ethernet cable, electrical configuration kit with fuses, Media Loading tool, Spindles supports (x2)	
<b>Environmental ranges</b>	Operating temperature 15 to 30°C (59 to 86°F) Operating humidity 20 to 70% RH (non-condensing)	
<b>Acoustic</b>	Sound pressure, active: 61 dB(A), standby: 45 dB(A)	
<b>Power</b>	Printing: three phase: 8 to 15 kW; single phase: 1 kW Powersave: three phase: 0 kW; single phase: 310 W Off: 0.1 W	
	Requirements: Three phase (line-to-line voltage): 200 to 220 VAC (+/- 10%), 50 A max; 380 to 415 VAC (-10% +6%), 30 A max; 50/60 Hz; single phase: 115 to 127 VAC (+/- 10%); 200 to 240 VAC (-10% +6%) (Japan 200 V); 50/60 Hz, 10 A max	
<b>Certification</b>	Safety	United States and Canada (CSA listed); EU (LVD and MD compliant, EN60950-1, 12100-1 and 60204-1); Russia (GOST)
	Electromagnetic	Compliant with Class A requirements, including USA (FCC rules), Canada (DoC), EU (EMC Directive), Australia (ACMA), New Zealand (MoC)
	Environmental	RoHS, WEEE, REACH
<b>Warranty</b>	One-year limited hardware warranty	



## Ordering information

<b>Product</b>	CR774A	HP Latex 850 Printer	
<b>Accessories</b>	CK832A	HP Scitex LX Printer Cleaning Kit	
	CQ657A	HP 126-in Spindle	
	CX062A	HP 126-in Dual Roll Kit	
	CQ755B	HP Scitex Caldera RIP Software	
	D9241A	HP Scitex Onyx Thrive 211 RIP Software	
<b>Original HP printheads</b>	CN667A	HP LX610 Yellow/Magenta Latex Printhead	
	CN668A	HP LX610 Cyan/Black Latex Printhead	
	CN669A	HP LX610 Light Magenta/Light Cyan Latex Printhead	
<b>Original HP ink cartridges and maintenance supplies</b>	CN670A	HP LX610 3-liter Cyan Latex Ink Cartridge	
	CN671A	HP LX610 3-liter Magenta Latex Ink Cartridge	
	CN672A	HP LX610 3-liter Yellow Latex Ink Cartridge	
	CN673A	HP LX610 3-liter Black Latex Ink Cartridge	
	CN674A	HP LX610 3-liter Light Cyan Latex Ink Cartridge	
	CN675A	HP LX610 3-liter Light Magenta Latex Ink Cartridge	
	CC591A	HP LX600 Scitex Maintenance Kit	
	<b>Original HP large format printing materials</b>	HP printing materials are designed together with HP Latex Inks and HP Latex printers to provide optimal image quality, consistency, and reliability. HP PVC-free Wall Paper (FSC® and GREENGUARD GOLD Certified) <sup>17</sup> HP Everyday Matte Polypropylene, 3-in Core  <sup>18</sup> HP Backlit Polyester Film  <sup>18</sup> HP Premium Satin Canvas For the entire HP Large Format Printing Materials portfolio, please see <a href="http://globalBMG.com/hp">globalBMG.com/hp</a> .	

<sup>17</sup> BMG trademark license code FSC®-C115319, see [fsc.org](http://fsc.org). HP trademark license code FSC®-C017543, see [fsc.org](http://fsc.org). Not all FSC®-certified products are available in all regions. GREENGUARD GOLD Certification to UL 2818 demonstrates that products are certified to GREENGUARD standards for low chemical emissions into indoor air during product usage. For more information, visit [ul.com/gg](http://ul.com/gg) or [greenguard.org](http://greenguard.org).

<sup>18</sup> HP Large Format Media take-back program availability varies. Recycling programs may not exist in your area. See [hp.com/recycle](http://hp.com/recycle) for details.

**HP Latex 850 Printer (formerly the HP Scitex LX850 Industrial Printer)**

