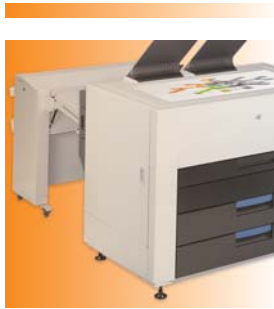


# **KIP 800 | COLOR SERIES**



# KIP 800 | COLOR SERIES

## *A new generation of wide format functionality*

The KIP 800 Color Series provides a comprehensive solution for a range of wide format printing tasks that require the highest levels of quality and performance. The system's workflow provides powerful print control for any production environment from a range of print submission applications, cloud printing, scan & copy, variable data printing and fully integrated stacking and folding.





# Engineered to deliver **BREAKTHROUGH COLOR PRINT QUALITY**

while providing real value from high quality images, reliable performance and efficient operation.

Print production on the KIP 800 Color Series systems produces amazingly vibrant colors, striking graphics, and photographic images that capture subtle tints and hues with unsurpassed color stability from the first to final print.

All prints and copies generated by the KIP 800 Color Series systems are fully lightfast, meaning that they will not fade or exhibit color deterioration from exposure to light over extended periods. The CMYK dry toner system employed by the KIP 800 Color Series produces 100% waterproof images that are suitable for outdoor applications even in inclement weather.

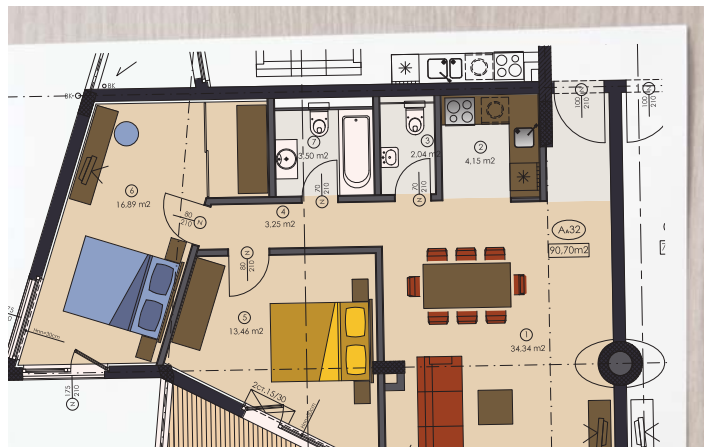
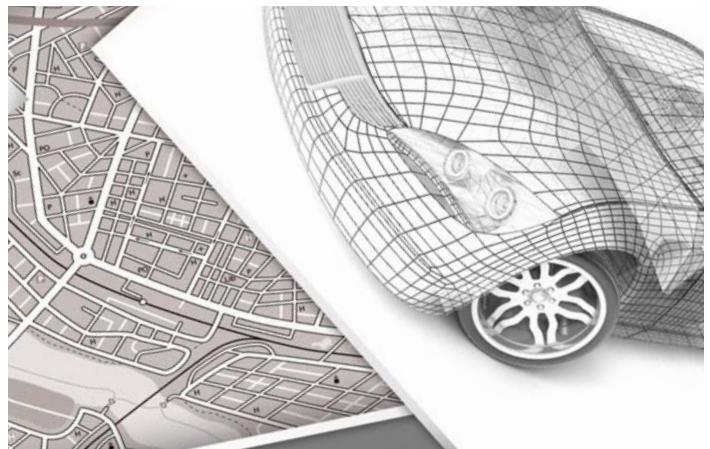
## *Operational Speeds*

-  2,880 square feet per hour Vibrant Color
-  3,600 square feet per hour Single Pass Black

## **TECHNICAL DOCUMENT & DISPLAY GRAPHIC CREATION**

The KIP 800 Color Series systems are designed for technical, graphic and office document users who require high demand output, precise imaging and bold, expressive color fidelity.

The KIP 800 Color Series systems are a comprehensive wide format solution for a range of printing tasks spanning from architectural, engineering, and construction documents — to maps, posters, signs, and photo enlargements — without sacrificing quality or performance.



# INTRODUCING KIP 800 COLOR SERIES

## *the new line of color print systems*

Explore the new KIP 800 Color Series. Offering the same compact design and function as the KIP 70 Series, now with color. The KIP 800 Color Series saves serious time and money – making ultra high-quality wide format printing more cost effective than ever before. Printing is faster. Operation is simpler. Finishing is automatic. Reliability keeps you up and running. Image quality will keep your customers coming back for more.



### **KIP 850**

#### *Multi-touch color print system*

##### *Optimize space and productivity!*

The KIP 850 network print system is a space saving workgroup printer delivering fast, low cost color and black & white wide format documents with breakthrough print quality. Easily meet project timelines and exceed quality standards with consistent print speed and precision imaging. Innovative front stacking allows close wall installation to maximize space efficiency.

##### *Features*

- 2 Roll Network Printer
- 12" Smart System K Touchscreen
- Standard Front Stacking
- Optional Rear Stacking or KIPFold
- KIP System K Print Management Suite
- Windows and AutoCAD Drivers
- Workflow Automation

### **KIP 860**

#### *Multi-function color system*

##### *Experience exceptional workflow efficiency!*

The KIP 860 is ideal for environments that require convenient multi-function productivity with a single footprint space-saving design. The KIP 860 color print system provides extraordinary print quality and performance for both color and black & white wide format printing of technical and business graphics. All system features and functions are at your fingertips using the intuitive touchscreen navigation that automates copy, scan and print functions for single touch productivity.

##### *Features*

- 2 Roll Multi-Function System with Integrated Scanner
- 12" Smart System K Touchscreen
- Standard Front Stacking
- Optional Rear Stacking or KIPFold
- KIP System K Print Management Suite
- Windows and AutoCAD Drivers
- Workflow Automation





## KIP 870

*Multi-touch production color print system*

### *A new level of enterprise performance!*

The KIP 870 workgroup and departmental print system is designed for high demand project requirements, with outstanding performance and reliability. High resolution color and black & white mixed set production with built-in cost efficiency reporting. Expand the compact front stacking design with versatile rear stacking or folding accessories that increase productivity. Touchscreen convenience offers advanced network cloud access, set printing and system management without a PC workstation.

#### *Features*

- 4 Roll Network Printer
- 12" Smart System K Touchscreen
- Standard Front Stacking
- Optional Rear Stacking or KIPFold
- KIP System K Print Management Suite
- Windows and AutoCAD Drivers
- Workflow Automation

## KIP 880 890

*Multi-function production color system*

### *The ultimate in wide format functionality!*

The KIP 880-890 delivers unmatched multi-function copy, scan and print performance for high demand enterprise workflow. Engineered to deliver vibrant consistent color quality from first to final print. The integrated dual footprint configuration multitasks scan and print production, saving valuable project time. Smart touchscreen automation simplifies complex copy, scan and print processes for single touch control.

#### *Features*

- 4 Roll Multi-Function System with Integrated Scanner
- KIP 880 includes a KIP 720 CIS Scanner
- KIP 890 includes a KIP 2300 CCD Scanner
- 12" Smart System K Touchscreen
- Standard Front Stacking
- Optional Rear Stacking or KIPFold
- KIP System K Print Management Suite
- Windows and AutoCAD Drivers
- Workflow Automation

# KIP 800 SERIES

## *features designed for effortless operation*

- Color and Black & White Print Production
- Integrated Folding, Finishing & Stacking Systems
- Automatic Roll Trimming
- Quick Switch Technology
- Integrated USB Port for External Drives
- Production at Remarkable Print & Scan Speeds
- Media Load Assist
- Extended Print Lengths for Maximum Productivity
- Automatic Image Calibration for Precise Color Output
- Technical Document and Display Graphic Creation
- Large Capacity Toner Cartridges for Continuous Print Runs and Productivity



### System K Software

The KIP 800 Series increases productivity while simplifying the user experience with touch tablet navigation, diverse software suite with ribbon command bars and system standardized icons, along with cloud integration.



### Large Capacity Toner

Each CMYK cartridge contains 1,000 gsm of toner for a total capacity of 4,000 gsm - allowing longer uninterrupted color and black & white print runs for continuous system productivity.



### Production Printing

The KIP 800 Series print systems offer superb resolution at remarkable print speeds of up to 3,600 square feet or 2,880 square feet in color.



### Low Cost of Operation

The KIP 800 Series color and black & white LED production printing systems are based on a unique design that lowers the operational costs.



### Quick Switch Technology

The KIP 800 Series print technology eliminates roll switching delays for increased productivity. Two or 4 media rolls and a sheet feeder deliver mixed print sizes at full production speed.



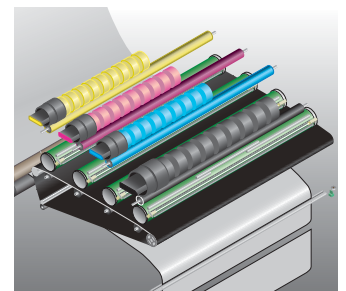
### Extended Print Lengths

The KIP 800 Series handles long print images on a variety of media types from either of its 2 or 4 integrated roll decks for maximum productivity and operator efficiency.



### Media Load Assist

An ergonomic roll cap system simplifies the process of loading the 3,000 or 6,000 square foot media capacity.



### Single Pass Black

KIP 800 Series single pass black delivers a 25% increase in productivity. An exclusive single belt drive system performs automatic calibrations for precise imaging and bold, expressive color output.

# KIP 800 Color Series Accessories

---

## Stacker

---

The KIP 800 Color Series integrated stacking systems improve the efficiency and productivity of your print production environment by providing a convenient place to neatly stack a multitude of various page sizes. Unattended print runs can be scheduled with peace of mind due to comprehensive internal diagnostics of the KIP 800 Color Series.

*Optional for KIP 850, 860, 870, 880-890*



## KIPFold 1000

---

The KIPFold 1000 is a compact, but powerful online folder designed to easily, conveniently and quickly fan-fold documents. Folded document packets are crisp, professional and ready for distribution. Unfolded documents are directed to the conveniently located integrated front stacker.

*Optional for KIP 850, 860, 870, 880-890*



## KIPFold 2800

---

The KIPFold 2800 system automates wide format document folding requirements by providing folding, stacking and collation in a compact design. KIP online folders intelligently communicates with KIP printers and are fully integrated with KIP software applications and print drivers to provide seamless workflow integration.

*Optional for KIP 850, 860, 870, 880-890*



## Copying & Scanning

---

The KIP 800 Color Series provides efficient, high-speed hard copy reproduction workflow. Exceptional image quality is achieved through true 600 x 600 dpi optical resolution via a choice of integrated KIP Scanners, with advanced optics and delicate original transport processes for pixel-perfect images.

*Integrated scanner included with KIP 860*

*KIP 720 scanner available with KIP 880*

*KIP 2300 scanner available with KIP 890*





# KIP 800 COLOR SERIES

*functions available at  
your fingertips.*

KIP System K Software Suite provides an enhanced user experience and exceptional productivity for the seamless control of color and black & white print demands.



## *Experience the most intuitive interface*

The KIP 800 Color Series systems feature a diversified software suite that forms the most integrated and powerful wide format color and black & white imaging system available.

From PC & web-based viewing, and printing of documents in a wide range of formats, to professional color management, application drivers, touchscreen & cloud printing, KIP System K Software streamlines production print work, saves time and increases productivity.

## *KIP System K features & benefits*

- Touchscreen tablet navigation
- Standardized system icons with tile interface
- Print submission applications with systems management, configuration and systems status
- Software applications feature ribbon command bar with extended choice of functions
- SNMP protocols, cost center control and cloud collaboration
- System K Windows® Driver, WHQL certified, touch PC compliant with simplified / advanced functions and systems status





## KIP System K Multi-Touch Screen

---

KIP Multi-Touch Touchscreen	Vivid 12" Color Multi-Touch Display   Fully Articulating Viewing Angle   Print, Copy and Scan in Black & White and Full Color   Super View for Swipe, Pinch, Spread and Rotate   Print Directly from Removable Media, the Cloud and Local Mailboxes   Full Color User Guides   Integrated Copy, Scan & Print Previews with comprehensive AOI functions   On-screen Set Copy Editor   Manage History Queue   User Templates   System Presets for Company Standards
KIP Color and Black & White Copy & Print Plus	Full Size Preview with Super View   Comprehensive AOI functions using modern touch gestures   Simultaneous Operation of Color and Black & White Functions   Real Time Image Preview   Full Screen Color Preview   Advanced Color Image Enhancement
KIP Cloud Connect	Select from Multiple Cloud Services   Print from KIP Cloud Connect   Scan to KIP Cloud Connect   Unlimited Cloud Connections   Single or Multiple Files   Choose Files from Multiple Cloud Services for Single Print Job   Easy Configuration from Multi-Touch Screen   Collated Sets Printing

---

## KIP System K Print Drivers

---

Windows® Driver	Fast Spooling for Multiple Copies or Sets   Displays Real Time System Status   Set Collation   Provides Current Media Information   Media Selection   Secure PIN Printing   Send Job on Hold   Save/Load Templates   Brightness Adjustment   Unlimited Image Quality Presets   Pens, Dithers, Page Sizes, Fold Patterns, and Scaling System Preset Selection
AutoCAD Driver	Fully Compatible with Current Versions of AutoCAD   True HDI AutoCAD Driver   32 and 64 Bit Operating System Compatibility   Real Time Media and System Status   Custom Media Size Configuration   Media Saving by Auto Rotation and Advanced Roll Selection   Advanced Color Mode Image Type Selection   Pens, Dithering, Page Sizes, Fold Patterns, and Scaling System Preset Selection

---

## KIP Data Security Features

---

KIP Data Security	Image Overwrite   Removable Hard Disk Drive Accessory Kit   Operating System: Windows® Standard Embedded 7   Standard Security Updates   Data Encryption and Virus Scanning Applications   KIP Secure Print   SSL Communications
-------------------	--

---

## KIP System K Print Submission

---

KIP PrintPro	Multiple Copies or Collated Sets   WYSIWYP Image Preview   Individual File Settings for Job Matrix Templates   Multi-Page Settings   Color Adjustments and Filter Selections   Email Notification   Customize Job Build Matrix Windows   Document Folding and Stamping   HPGL Pen Preset Selection   For Windows® 7/8/10 and Vista Compatible (32 and 64 Bit) PC's   Customize System and Folder Presets   Manage Print Queue   KIP Secure Print
KIP PrintPro.net	Multiple Copies or Collated Sets   WYSIWYP Image Preview   Individual File Settings for Job Matrix Templates   Multi-Page Support   Color Adjustments and Filter Selections   Email Notification   Document Folding and Stamping   HPGL Pen Preset Selection   Transfer Files from KIP Printer Mailbox   Compatible with Microsoft Internet Explorer (v. 10 and up), Google Chrome (v. 44 and up), Mozilla® Firefox, Edge, Opera and Apple Safari   Customize System and Folder Presets   Manage Print Queue and User Settings   KIP Secure Print
KIP Graphic Express	Unlimited Workstation Licenses   Color, Black & White and Grayscale Printing   Job Editor for Mixed Color and Black & White Sets   Multi-Page PDF/TIF   Load and Save RIP Presets   Filter Editor for Color Control   ICC Profile Support   Factory/Custom Media Profiles   Nest Single and Multiple Images   Automatic Horizontal and Vertical Paneling   Softproof and Color Gamut Notifications   Area of Interest (Zoom to Area and Print)   Editing Tools   KIP Accounting Center Integration   KIP Cost Center Integration
KIP Smart Print & Scan	Submit Print Ready Files via Email Attachments   Works with any Web Enabled KIP Printer   Print Color or Black & White Documents   Scan Full Size Documents to Email   Choose an Area of Interest   Remote Scan Auto-Archived or Printed by KIP Printer   Optional Keywords Provide Expanded Flexibility

---

## KIP System K Accounting / Administrative

---

KIP Accounting Center	Username and Two Customizable Fields   Import User Data Using LDAP   Clear Fields after each Job Submission   ASCII Import/Export   Easily Update User, Project and Department Data   Password Protect any or all Data Entries   No Special Data Servers Required   PC Based Windows 7/8/10 and Vista Application   Role Based Access Control By User
KIP Cost Center	Integrated with all KIP Apps and Touchscreen Systems   Track Color and Black & White Copy, Scan and Print   Easy to Understand Graphical Reports   Average Toner Coverage by Percent   Daily Print and Scan Volume for Color and Black & White   User, Project and Department Categories   Access the Details of the Last 100 Jobs   KIP Toner Costs by Color and Black & White   KIP Maintenance Costs   KIP Scanner Costs by Color and Black & White   PC Based Windows 7/8/10 and Vista Application
KIP Card Reader Systems	Contactless Card System Integration: Standard FeliCa Cards   Various Contactless NFC Tokens and Cards   NFC Forum – Certified Card Reader   User Authentication Linked to Card/NFC Token   Release User Jobs at Touchscreen   KIP Accounting Center Integration   Common Access Card Solution: Enables/Disables Network Access   Designed for Easy Installation   Meets Homeland Presidential Security Directive (HSPD-12)   Local and Network User Authentication Using LDAP or Active Directory   Netgard MFD In-Line Network Appliance
KIP Printer Status / SNMP	SNMP Communication to KIP Printer   PC Based Windows 7/8/10 and Vista Application   Monitor Status of KIP Printers   Auto Detect KIP Printer (LAN) IPv4 & IPv6   Visual Notification for Machine Status   View all KIP Printers on a Single Screen   Automated Meter Read

---

## KIP Print Management Solutions

---

Touchscreen Technical Interface	The KIP Touchscreen Technical Interface is an integrated comprehensive program for the control of KIP Systems, Installation & Technical Support. Utilize tablet style controls to provide comprehensive and easy access to functions such as automatic adjustments, program updates and printer status, reducing the duration of on-site support and improving productivity.
KIP Custom Media Manager	Accessed by web browser, the KIP Custom Media Manager allows unlimited operator control of media types based on media name, project or job identification.

---

# KIP 800 Color Series Specifications

2/4 Roll Color and Black & White Printer	Color and black & white printer with intelligent KIP System K touchscreen
2/4 Roll Color and Black & White Print/Copy/STF	Color and black & white printer with intelligent KIP System K touchscreen for Print/Copy and STF functions
System Scanners	KIP 860: KIP 720 embedded / KIP 880: KIP 720 CIS Scanner / KIP 890: KIP 2300 CCD Scanner
Scanner Stand	KIP 720 / KIP 2300 Scanner Stand (for the KIP 880-890 or optional for stand-alone scan applications)
Stacking Systems (standard)	Front Stacking Print Tray
Finishing Systems (optional)	KIP 800 Stacker, KIPFold 1000, KIPFold 2800
Description	Departmental production color and black & white wide format print/copy/scan
Type	LED Array Electro photography with organic photoconductor (OPC drum) Contact Development using non magnetic mono-component toner
Configurations	Printer or multi-function system (print/copy/scan)
Speed	Up to 3,600 sq. ft (334 m <sup>2</sup> ) in single pass black or 2,880 sq. ft. (268 m <sup>2</sup> ) per hour in color regardless of image type or print resolution
Warm Up Time	Instant from standby, less than 6 minutes from power on
Toner	Four color (CMYK), dry toner, print images are UV resistant and waterproof
Input Power	North America: 208-240VAC +6%/-10% 50/60Hz, 16 A EU/UK: 220-240 V, 50/60 Hz, 16 A
Power Consumption	Ready: 0.6 kWh. Printing: 1.9 kWh, Warm Up: 3.4 kWh, Sleep Mode: 3 Wh
Acoustic Noise	< 65 db Printing
Ozone	< 0.05 ppm (average of 8 hours)
Dimensions	KIP 850 60" x 43" x 40" / 1500 x 1080 x 1015 mm (W x D x H) KIP 860 60" x 43" x 46" / 1500 x 1080 x 1155 mm (W x D x H) KIP 870 60" x 43" x 48" / 1500 x 1080 x 1220 mm (W x D x H) KIP 880-890 78" x 43" x 48" / 1970 x 1080 x 1220 mm (W x D x H)
Weight	KIP 850 1,070 lbs / 485 kg KIP 860 1,125 lbs / 510 kg KIP 870 1,170 lbs / 530 kg KIP 880 1,225 lbs / 556 kg Weight of the KIP 880-890 is dependent on the scanner model - KIP 720 noted

## Printer

Print Resolution	600 x 2,400 dpi
Paper Capacity	3,000 sq ft / 280 sq m ( 2 rolls + cut sheet ) 6,000 sq ft / 560 sq m ( 4 rolls + cut sheet )
Output Sizes Width (roll media)	11" - 36" / 297 mm - 914 mm (3" Core)
Output Sizes Length (roll media)	8.5" / 210 mm minimum, 210' / 64 m maximum (actual length may be dependent on media type and file type limitations)
Paper Weight (roll media)	Bond: 18 - 40 lb / 67 - 150 gsm, Film: 3 - 4 mil Double Matte Polyester, Tracing: 18 - 20 lb / 67 - 75 gsm Banner and Gloss: see KIP 800 Media Guide
Sheet Bypass	Up to 40 lbs. / 150 gsm bond   Maximum sheet size 36" / 914 mm x manageable length   Minimum sheet size 11" x 17" / A3
Media Types	Bond Paper: Economical Bond, Standard Bond. Specialty Bond paper: Presentation Bond, Heavy Weight Bond. Polyester Film: 3 mil Clear, 3 mil Double Matte, 4 mil White Opaque. Banner Media: Fusion Soft Polyester. Please see the KIP 800 Series Media Guide for details.

## Scanner / Copier

Resolution	600 dpi (optical)
Original	Single Sheet, image viewable/face up
Widths	8.5" - 36" / 210 mm - 914 mm (international standard page sizes to include ANSI, ARCH, ISO A & B, CHN, JPN)
Length	8.5" - 19.7' / 210 mm - 6 m

Please see the KIP 2300 Scanner documentation for details on this optional scanner for the KIP 890 Color System

## Controller

Controller Type	System K Embedded, Windows Standard Embedded 7 - 64 bit, i5 Quad Cord (min)
Memory	4 GB (min)
Hard Drive	320 GB minimum unlimited upgrade
Compatible File Formats	Raster Color: TIFF, JPG, JPG2000, PNG, BMP, GIF, TGA, RLE/RLC Vector Color/B&W: HPGL, HPGL/2, HP-RTL, Postscript (PS/EPS), Adobe PDF, Autodesk DWF, Multipage PDF & DWF Raster B&W: TIFF Group 3 & 4, CALS Group 4, Grayscale TIFF Vector B&W: Calcomp 906/907

## Space, Electrical & Environmental Requirements

Total Space (minimum)	132" x 103" / 3350 x 2600 mm ( W x D ) ( KIP 850, 860 & 870 ) 178" x 103" / 4500 x 2600 mm ( W x D ) ( KIP 880 with KIP 720 ) 132" x 205" / 3350 x 5190 mm ( W x D ) ( KIP 850, 860 & 870 with optional rear print stacker ) 178" x 205" / 4500 x 5190 mm ( W x D ) ( KIP 880 with KIP 720 with optional rear print stacker ) The flexibility of the KIP 880-890 system permits the scanner to be placed perpendicular or parallel to the KIP printer for individual workflows, which can result in special requirements that may differ than noted above. System access through standard door frames without lifting or tilting.
Electrical Requirements	KIP 850, 860 & 870 North America: 208-240VAC +6%/-10% 50/60Hz, 16 A EU/UK: 220-240 V, 50/60 Hz, 16 A KIP 880-890 North America: 208-240VAC +6%/-10% 50/60Hz, 16 A for KIP Printer and 110-120 V, 50/60 Hz, 6 A or higher for KIP Scanner EU/UK: 220-240 V, 50/60 Hz, 16 A for KIP Printer and 100-240 V, 50/60 Hz, 6 A or higher for KIP Scanner
Electrical Receptacle	North America = NEMA 6-20 R (plus one NEMA 5-20 R for the KIP 880-890) Europe = CEE 7 (x2 for KIP 880-890) UK = BS 546 (x2 for KIP 880-890) All other regions = please refer to your local standards
Network Port	RJ-45 port-CAT5 or higher. LAN rated at least at 100 mb. Recommended is 1000 mb
Room Temperature	50-86° F / 10-30° C
Humidity	15-80% RH
Site Survey	KIP 800 Color Series site survey documentation is to be completed prior to system installation

# THE COLOR OF KIP IS GREEN.

KIP is committed to product designs that promote environmental health and sustainability. KIP's goal is to consistently improve and refine the technologies in products that keep our planet green. KIP considers the total product life cycle - from the manufacturing process to final device disposal in our shared ecosystems.



## LOW EMISSIONS – HIGH EFFICIENCY

- KIP products all have a variety of sleep modes and power usage timers to reduce power consumption. All KIP systems are Energy Star qualified.
- During operation, the power consumption of KIP products are one of the lowest in the industry thanks to efficiency in design.
- KIP's manufacturing processes have reduced electricity consumption by 33%, all while increasing productivity.



[KIP.COM/GREEN](http://KIP.COM/GREEN) | FOR MORE INFORMATION





[WWW.KIP.COM](http://WWW.KIP.COM)

---

**USA:** Phone: (800) 252.6793 | Email: [info@kip.com](mailto:info@kip.com)    **CANADA:** Phone: (800) 653.7552 | Email: [info@kipcanada.com](mailto:info@kipcanada.com)

KIP is a registered trademark of the KIP Group. All other product names mentioned herein are trademarks of their respective companies. All product features and specifications are subject to change without notice. Complete product specifications are available upon request. © 2017