



KIP 2300

HIGH PRODUCTION CCD SCAN SYSTEM



KIP 2300 CCD SCANNING SYSTEM

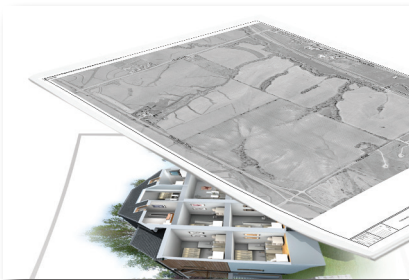
High Production Scan System

The new KIP 2300 high productivity scanner sets a uniquely high standard for speed, quality and flexibility in a digital image capture system.

Best in class productivity is achieved by a combination of advanced camera based image capture and new KIP Tru•Speed Technology for high speed data throughput with no system pauses or slow downs.

Outstanding image quality is delivered through the innovative use of bright white LED light sources for illumination and 600 x 600 dpi image capture resolution.

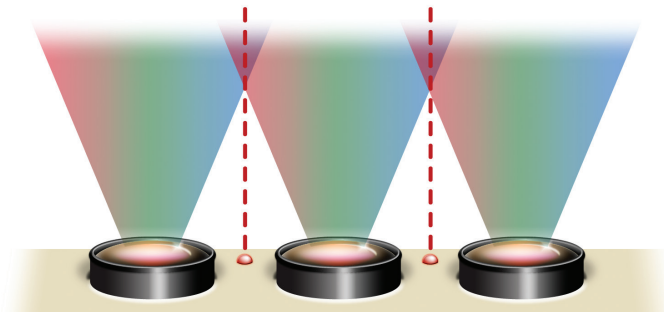
The KIP 2300 is a high speed scan solution that provides world-class workflow flexibility through its ability to scan face up or face down and scan thick mounted originals and loose sheets of paper from a single unit.



Versatile Camera Imaging

The KIP 2300 Colour Scanner Solution can support both monochrome and colour scan-to-file and copy to satisfy most application needs. When scanning to file, users have advanced software controls over image quality; when copying, a closed loop calibration system adjusts output to the exact inkjet device being used for output, ensuring maximum copy quality.

The KIP 2300 scanner is powerful, with image capture speeds from 5 ips to 15 ips in monochrome (dependent on dpi) and 2 to 6 ips in colour. The image capture area is up to 914mm wide, yet originals up to 1066mm wide may be fed through the scanner.



Three independent imaging cameras with an advanced laser alignment system and self calibrating diagnostics provide an extraordinary level of quality.



Flexible Scan System

600 dpi optical resolutions is the key to the KIP 2300 Colour Scanner's outstanding imaging capabilities. In addition, the KIP 2300 Colour Scanner takes full advantage of patented (Real Time Thresholding) and self-calibrating imaging cameras to ensure high quality results.

To optimise image size for intended use, users can select custom resolutions, for example 72 dpi for website and PC monitor displays and 300 for offset press work.

KIP Tru•Speed Technology

The technology used in KIP Tru•Speed scanning provides an image data transfer rate of 2.3GB per second, ensuring high productivity for the most complex full colour documents. Originals are imaged at maximum speed with no scanning slowdowns or pauses, as found in all competitive scanning systems. KIP Tru•Speed scanning delivers full colour, high speed imaging for the most demanding production environments.



- **Faster than any other competing image transfer technology**
- **190 times faster than USB 1.0!**
- **4.8 times faster than USB 2.0!**
- **2.9 times faster than Firewire!**
- **Scan documents at full speed and full resolution**
- **No scanning pauses or slow downs**

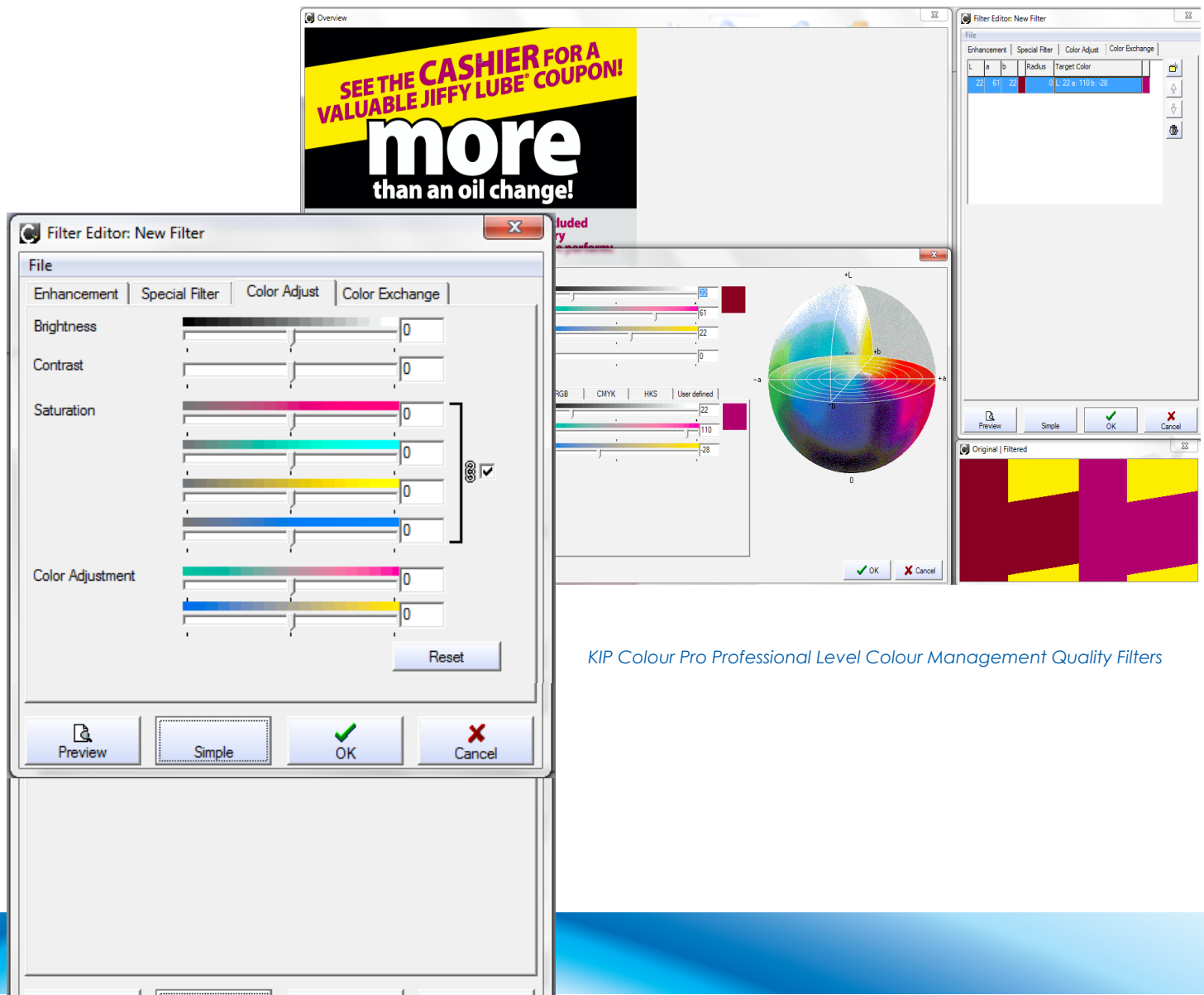
KIP COLOUR PRO



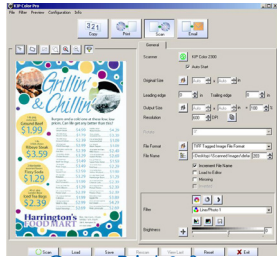
KIP Colour Pro

KIP Colour Pro software provides all the features of KIP Colour Advanced, plus file to print, professional ICC colour management, image editing capabilities, paneling of images for outdoor graphics, nesting of images for optimum media usage and much more.

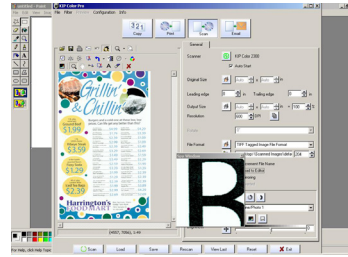
- Supports a full range of colour file formats
- Create, edit & save image quality filters
- Integrates with single or multiple printers
- Accurate colour from closed-loop calibration
- Scan to email, USB drives, mailboxes or network
- Professional grade image enhancement options
- Expert mode printing features
- Black point and white point adjustments
- Sharpness and scan speed control
- Image editor with deskew and cropping



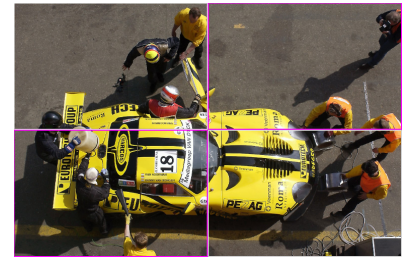
KIP Colour Pro Professional Level Colour Management Quality Filters



Copy, Print & Scan



Professional Image Editor



Copy & Print Paneling

KIP Colour Pro Features	B&W	Colour
Single and Collated Sets Copying	•	•
Mixed Mono and Colour Copying	•	•
Scale By Factor, Page Size, Auto	•	•
Image Preview	•	•
Auto Image Deskew	•	•
Area of Interest Reduce/Enlarge	•	•
Auto Start for Fast Document Feeding	•	•
Copy to all KIP printers	•	•
Concurrent Copy and Print	•	•
Scan to File & Copy In Parallel	•	•
Professional Grade Copy Filter Editor and Preview	•	•
KIP Cost Review Application Integration	•	•
KIP Track System	•	•
Scan Features		
Auto Detect Original Size	•	•
Scan Area of Interest / Scan to Specific Size	•	•
Wide Variety of Formats	•	•
Scan to Email (Full Image or Area of Interest)	•	•
Mono / Greyscale / Colour Scanning	•	•
Scan to Multipage PDF and TIF	•	•
Scan Image Compression (Variable)	•	•
Graphics Viewer/Editor for Despeckle/Deskew	•	•
Auto Increment of File Name	•	•
File to Print Features		
Print Single or Multiple Files to KIP or Inkjet	•	•
Paneling	•	•
KIP Printer Linearisations	•	•
Spot Colour Exchange	•	•
Nesting (Step and Repeat)	•	•
On Screen Softproof Capability	•	•
Copy Features		
Colour Adjustment		•
Paneling	•	•
Roll Preview	•	•
Gamut Warning and On Screen Softproof	•	•

KIP Colour Pro Features	B&W	Colour
Copy Features		
Multicopy Nesting	•	•
Set Black and White Point at Start of Set	•	•
Media Calibration Wizard	•	•
Job Editor to Mix Copy, Scan and File Images	•	•
Reprint	•	•
Nesting (Step and Repeat)	•	•
Printer/Scanner Closed Loop Calibration	•	•
Unlimited Presets/Templates	•	•
Professional Copy Filter Editor		
Adjust Scan/Copy Resolution	•	•
Adaptive Black Point By Auto or User Selection	•	•
Adaptive White Point By Auto or User Selection	•	•
Black Enhancement	•	•
Background Removal	•	•
Included Printer Drivers for 1 KIP, 2 Inkjets	•	•
Additional KIP and Inkjet Drivers	Optional	Optional
Scan Features		
Scan to File	•	•
Scan to File - File formats	All Types	All Types
Colour Adjustment		•
Greyscale Adjustment	•	•
Background Processing	•	•
Import Colour Profiles		•
Scan at Faster Speeds at Lower DPI	•	•
Control Scanner Speed Independent of DPI	•	•
Supports PDF Security Protocols	•	•
Unlimited Presets/Templates	•	•
Professional Scan Filter Editor and Preview	•	•
Adjust Scan/Copy Resolution	•	•
Adaptive Black Point By Auto or User Selection	•	•
Adaptive White Point By Auto or User Selection	•	•
Scan B&W Images Using Colour Data	•	•
Twain Support	•	•
Graphics Editor and Preview	•	•
Despeckle and Hole Fill	•	

• = New/Enhanced available in latest version

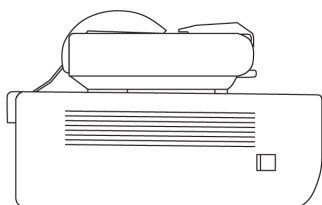
KIP 2300 WARRANTY & SPACE REQUIREMENTS

KIP 2300 Scanning System Warranty

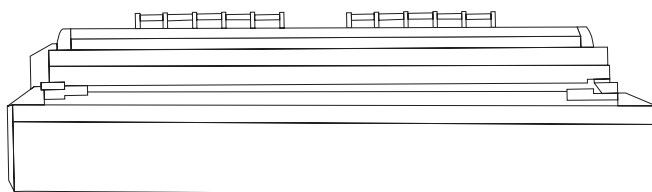


KIP 2300 Mono/Colour scanners are covered under a 24 month optical system manufacturer warranty from date of initial install.

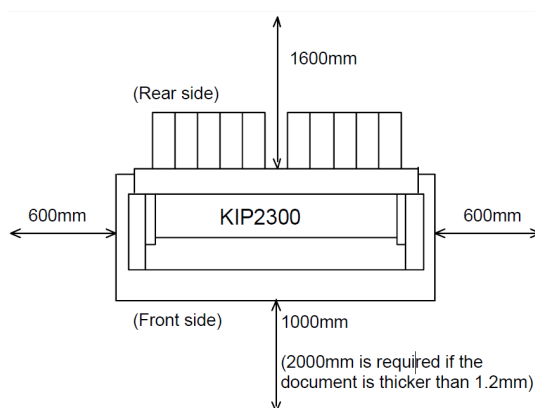
KIP 2300 Scanning System Space Requirements



KIP 2300 Side View

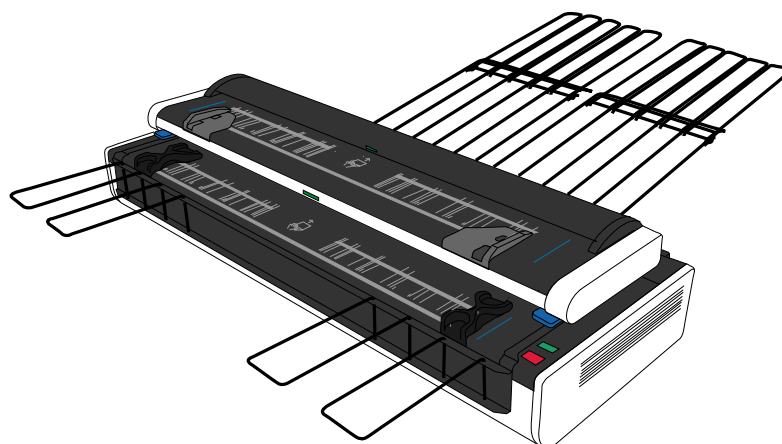


KIP 2300 Front View



KIP 2300 Top View

KIP 2300 SPECIFICATIONS



General	
Scanner Type	C.C.D. with KIP True•Speed Technology and KIP RTT Technology
Scan Resolution	600 x 600 dpi optical resolution
Scan Speed	Up to 18 m per minute (Mono), Up to 9 m per minute (Colour)
Scan Formats	TIFF, Multipage TIFF, PDF, PDF-A, Multipage PDF, DWF, Multipage DWF, JPEG, CALS
Scan Destination	Local USB (Removable Media), Unlimited IPS Mailboxes (Local), Unlimited FTP, Unlimited SMB
Original Size Width/Length	Originals Up to 1,066 mm - 914 mm Scan width
Original Thickness	Up to 16 mm Automatic thickness detection
Original Face Up/Face Down	Both - Dual Original Feed Tables
Interface	USB 2.0, KIP Tru Speed Technology (2.3GB per sec data transfer)
Dimensions	1,399 mm W, 480 mm D, 310 mm H
Weight	73 kg
Electrical	100-240V AC 50/60 Hz
Power Consumption	<120 watts
Minimum PC Requirements (NOT INCLUDED WITH SCANNER)	<p>Quad Core Processor (Intel i5 or higher)</p> <p>Windows XP / 7 (32 or 64 bit)</p> <p>8 GB RAM with 64 bbit or 3GB RAM 32 bit</p> <p>1 TB Hard Drive</p> <p><i>(Example: 100 colour or 300 mono D Size images in a large set would require up to 5 Gb)</i></p> <p>1 Gig RJ45 Lan Port</p> <p><i>(Wireless is not recommended due to file transfers during copy process)</i></p> <p>DVD/CD Optical Drive</p> <p>One available USB 2.0 ports or higher for KIp Colour Advanced/Pro (scanner connection)</p> <p>One PCI-e port (for use with the KIP Tru-Speed card (HIL)</p> <p>One available USB 2.0 ports or higher for KIP RIP (product code connection)</p> <p>20" flat panel monitor (with VESA - 75 or 100 patterns for use with the KIP Scanner Stand)</p> <p>USB Keyboard & Mouse</p>



www.kipuk.com

υ.κ. ■ Phone: +44 (0) 132 7 304600 Email: info@kipuk.com

KIP is a registered trademark of the KIP Group. All other product names mentioned herein are trademarks of their respective companies.

All product features and specifications are subject to change without notice. Complete product specifications are available upon request. © 2012