



KONICA MINOLTA

The essentials of imaging



# **bizhub PRO C5501**

Smart colour power all-round

**Production system bizhub PRO C5501**



# Smart colour power all-round

CRDs and print providers but also professionals in advertising agencies need to react quickly and flexibly to varied customer requirements. To satisfy each and every demand, colour is just as essential as are a superior image quality and a fast production speed. Of equal importance is a competitive cost/performance ratio to ensure commercially viable margins. With the bizhub PRO C5501 Konica Minolta offers a digital colour production system that meets all these challenges.

- In colour as well as in black & white, the bizhub PRO C5501 delivers fast 55 prints per minute. Featuring Konica Minolta's advanced colour processing technology, this digital colour press was designed specifically to answer the essential requirements of CRDs and print providers with regard to quality, reliability, ease of use and economy. These merits as well as the bizhub PRO C5501's creative possibilities are just as appreciated by the advertising industry.
- The bizhub PRO C5501 combines extensive media flexibility with a versatile range of inline finishing capabilities, making light work of the production of the most diverse materials. Its sturdy, metal construction ensures absolute dependability while the compact design facilitates integration in locations where space is limited.
- Convenient operation and ease of use are other attributes that were important development criteria. Additionally, the bizhub PRO C5501 excels with a remarkable registration accuracy that ensures perfect results in duplex printing, including brochures and booklets.
- Konica Minolta's CS Remote Care concept makes unplanned stand-stills a thing of the past for the bizhub PRO C5501 while its low overall running costs will surprise even those operating on a tight budget.

**The bizhub PRO C5501 offers a lot more than high-speed colour production. Reaping the benefits of superior quality in combination with absolute reliability, print providers simply won't go wrong choosing Konica Minolta's dependable digital colour press.**



# No limits to colour and quality

With a definite focus on fast colour and superior quality, Konica Minolta integrated advanced technology into the bizhub PRO C5501, promising to not just keep things running but taking reliability to encompass an exceptional image quality as well as highest productivity.

## → Compact competence and reliability

Dependability is a fundamental issue for print providers, CRDs and advertising professionals alike. When deadlines are tight and production times are squeezed, the faultless performance of all equipment is essential, no matter whether smaller or larger print runs need to be produced urgently, or an impatient customer instantly requires sample quantities of a newly designed layout.

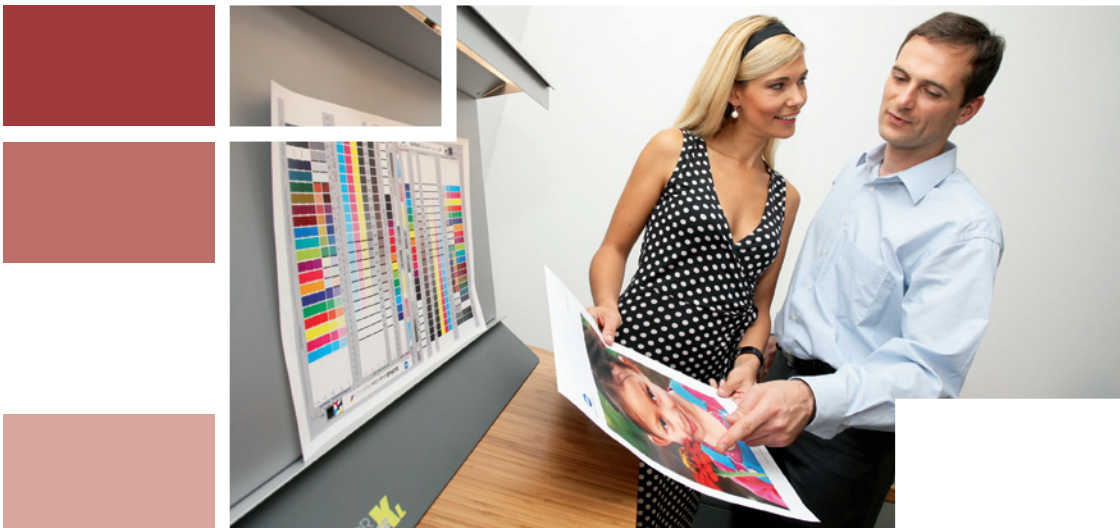
As an attractive asset, the bizhub PRO C5501 is amazingly compact for a device in its class. To many its remarkably small footprint will be a decisive advantage, especially if the colour press is to be installed in a crowded print room or an advertising agency where space is at a premium. Nevertheless its sturdy and robust construction always ensures a continuous and absolutely dependable performance.

## → Powerful choice of controllers

The internal Fiery controller (IC-408) delivers professional print results quickly and efficiently. Featuring EFI's highly efficient Fiery colour management system it supports users with an extensive standard range of utilities for varied applications.

Additionally, two external controller alternatives are perfect choices for any professional environment. With latest Fiery technology, the external Fiery controller (IC-305) enhances the comprehensive bizhub PRO C5501 functionality, providing an intuitive and user-friendly interface between operator and printer.

The optional external IC-304 Plus Creo controller turns the bizhub PRO C5501 into a robust workflow solution for graphic arts businesses and professional high-end environments that look for exceptional productivity and comprehensive personalised printing solutions.



# Colour processing technologies

The bizhub PRO C5501 includes the latest in Konica Minolta's very own, advanced colour processing technology. Innovations like S.E.A.D., ITbit technology, CRS, Simitri® HD polymerised toner and Konica Minolta's "air-assist" paper feeding technology provide an unbeatable combination of outstanding quality and smooth processing, ensuring perfect results and highest reliability.

## → S.E.A.D.

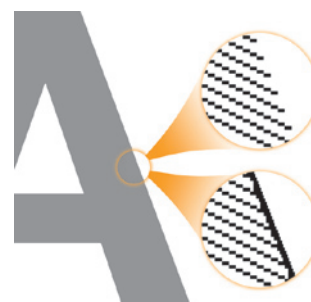
The bizhub PRO C5501 features Konica Minolta's very own, advanced colour processing technology. S.E.A.D. stands for „Screen-Enhancing Active Digital Process“, and combines an array of technical innovations to guarantee truly exceptional colour reproduction at top speed. To obtain highest precision, Konica Minolta's fast colour engine has been equipped with a dual-beam laser unit and HI-PER ASICs (high-performance image processing application-specific integrated circuits).

## → Unique screening capabilities

Konica Minolta's unique approach to screening is part of the S.E.A.D concept and applies a common process to printed and copied images. Highest flexibility and best results are ensured with two screen types each, for line screening as well as dot screening. The advantages are visibly smoother backgrounds.

## → Proprietary ITbit technology

To enhance S.E.A.D. further and achieve the very best results for any type of image or text, the bizhub PRO C5501 applies Konica Minolta's proprietary Image Tag bit (ITbit) technology. This unique process much improves the quality of text, helping to sharpen frayed edges in halftone printing. The benefits are obvious especially in outlines, reversed and slim text.



No ITbit Technology

With ITbit Technology



## → Colour Retention and Stability (CRS)

The exclusive CRS technology constantly monitors the status of the bizhub PRO C5501. Receiving continuous feedback about changes in the print environment and the engine, CRS immediately makes the necessary adjustments to always maintain highest print quality.

## → Simitri® HD polymerised toner

An essential requirement in production printing, the bizhub PRO C5501 delivers a superior colour image quality as well as impressive black density with Konica Minolta's proprietary Simitri® HD (High definition) polymerised toner. Simitri® HD also ensures an unparalleled colour image quality and with its reduced fusing temperature supports a truly impressive range of media.

## → Ultra-smooth paper processing

The bizhub PRO C5501 features fast and ultra-smooth paper processing: Where required, an optional heating unit inside the paper magazine dries paper stock before printing. Konica Minolta's "air-assist" paper feeding technology separates sheets and feeds them individually – a process that double-feed detection sensors make even more reliable! Thanks to a new printing and developing process, fusing temperatures are low, resulting in a considerable increase in media flexibility. Each individual print is cooled and de-curved before output giving optimum results.

## → High availability

Konica Minolta's remote diagnostics system CS Remote Care means pro-active support for each bizhub PRO C5501 in the field. With constant analysis of the system performance, CS Remote Care enables automated reporting and preventive maintenance, effectively assuring maximum system uptime.





# Professionally productive

**The bizhub PRO C5501 is comprehensively equipped to ensure highest levels of productivity while minimising manual interventions and production interruptions. An array of features and functionalities increases user convenience and facilitates the fast processing of jobs:**

- With Konica Minolta's smart colour production system short-run printing is fast and keeping short turnaround times easy! Its output capacity of up to 55 pages per minute in both full colour and b/w, and the paper and toner refill on-the-fly functionality make the bizhub PRO C5501 ideal for heavy-duty production and average monthly output volumes of 50,000 pages or more.
- Ease of use is just one of the bizhub PRO C5501's many attractive assets. User convenience, fast and easy handling and no-nonsense operation were top development priorities for Konica Minolta's digital colour press. User operation and programming for example are straightforward and intuitive via the large full-colour operator panel that provides clear and easy access to all functions.
- One precondition for faultless print production is absolute precision: The bizhub PRO C5501 meets this challenge with a back-to-front and page-to-page registration that comes very close to offset printing results. This brings noticeable benefits especially for the production of booklets and brochures – only two of the more complex jobs the bizhub PRO C5501 takes in its stride!
- Dependability is another issue that has top priority for professionals – and the bizhub PRO C5501 has been designed with reliability in mind. Beyond that Konica Minolta's remote diagnostics system CS Remote Care provides pro-active support once the bizhub PRO C5501 is in the field. With constant analysis of the system performance CS Remote Care enables automated reporting and preventive maintenance, effectively assuring maximum system uptime.




## ➔ Impressive media flexibility

Paper processing in the bizhub PRO C5501 is fast and ultra-smooth. Thanks to Konica Minolta's "air-assist" paper feeding technology the media flexibility is extensive and covers a wide range of substrates, incl. up to 300 gsm paper, coated paper, card and digital offset stock. With up to 4,250 pages input capacity the bizhub PRO C5501 easily handles long print runs and continuous production. Advanced features like mixplex and mixmedia guarantee professional results also for complex print jobs.



## ➔ Eco-friendly technology



Konica Minolta is committed to protecting the environment and assesses the environmental impact of its products at each stage of the product lifecycle, from raw material and parts procurement to manufacture, transportation, sale, use, reuse, recycling and disposal. Advanced eco-technologies help minimize the ecological impact also in the bizhub PRO C5501. Konica Minolta's proprietary polymerised toner Simitri® HD for example saves energy as it enables considerably lower fusing temperatures. At the same time, the production of Simitri® HD generates around 40% less in CO<sub>2</sub> emissions than toner produced by conventional pulverisation.



# Versatile finishing choices

Professional finishing of the printed product is an integral part of any production run – and flexibility is the key! An attractive selection of finishing options is available to upgrade the professional capabilities of the bizhub PRO C5501. With this, Konica Minolta’s digital colour press accommodates customers’ varied and individual requirements, and offers booklet creation, online punching and stapling as well as post insertion.

## ■ bizhub PRO C5501 (main unit)

Professional finishing starts right inside the bizhub PRO C5501 – a variety of advanced features ensures the production of sophisticated document formats. For example mixplex allows to combine single- and double-sided pages within one document. Mixmedia lets the user specify individual paper types from various trays on page-level. The combined mixmedia and mixplex function fully automates the production of complex one- and two-sided documents on different media.



one sided printing



two-sided printing/ duplex



paper/toner refill during operation



mixplex one/two sided - during operation



combined mixplex/mixmedia



mixmedia white/ colour sheets from different trays



## ■ Paper feed unit (LU-202)

Equipped with the large capacity cassette LU-202 the bizhub PRO C5501 can be loaded with up to 4,250 sheets of paper; and with air assist paper feeding and optional dehumidifier it is capable to print on various types of media.



mixplex one/two sided - during operation



combined mixplex/mixmedia



mixmedia white/ colour sheets from different trays







### ■ Staple finisher (FS-520)\*

This entry level finisher is the ideal choice for the production of marketing collateral and corporate documents on the bizhub PRO C5501.



corner stapling



2-point stapling



two-hole punching\*\*



four-hole punching\*\*



auto-shift sorting



### ■ Booklet finisher (FS-607)\*

Upgrading the bizhub PRO C5501 with the booklet finisher will automate the production of booklets and brochures, providing a convenient and productive in-line half-fold and saddle-stitching functionality.



corner stapling



2-point stapling



colour sheet insertion, booklet\*\*\*



colour cover insertion, booklet\*\*\*



booklet (folding and saddle stitching)



two-hole punching\*\*



four-hole punching\*\*



half-fold



letter fold in



auto-shift sorting



\* optional post inserter (PI-502) and punch kit (PK-512/513) available, \*\* requires PK-512/513, \*\*\* requires PI-502



# System configurations

The bizhub PRO C5501 excels with a modularity that provides a great choice of system configurations. With several product versions almost any imaginable combination is covered, offering complete customisation and answering the most specific customer demands.

## System 1

The system for corporate documents

- 55 full colour A4 pages per minute print performance
- Duplex as standard
- Highest image quality
- Up to 300 gsm (from by pass tray)
- Stapling up to 50 sheets
- Auto-shift stacking
- Output capacity up to 3,100 sheets
- Optional punching



## System 2

The system for marketing collateral and direct mailing

- 55 full colour A4 pages per minute print performance
- Duplex as standard
- Highest image quality
- 4,250 sheets paper input capacity
- Up to 300 gsm (from LU-202 or by pass tray)
- Stapling up to 50 sheets
- Auto-shift stacking
- Output capacity up to 3,100 sheets
- Optional punching



## System 3

The system for corporate documents and marketing collateral

- 55 full colour A4 pages per minute print performance
- Duplex as standard
- Highest image quality
- 4,250 sheets paper input capacity
- Up to 300 gsm (from LU-202 or by pass tray)
- Stapling up to 50 sheets
- Auto-shift stacking
- Post insertion
- Output capacity up to 3,100 sheets
- Optional punching





### System 4

#### The system for brochures

- 55 full colour A4 pages per minute print performance
- Duplex as standard
- Highest image quality
- Up to 300 gsm (from by pass tray)
- Booklet making up to 20 sheets
- Stapling up to 50 sheets
- Centre fold and Letter fold in
- Auto-shift stacking
- Output capacity up to 2,600 sheets
- Optional punching



### System 5

#### The system for direct mailings and brochures

- 55 full colour A4 pages per minute print performance
- Duplex as standard
- Highest image quality
- 4,250 sheets paper input capacity
- Up to 300 gsm (from LU-202 or by pass tray)
- Booklet making up to 20 sheets
- Stapling up to 50 sheets
- Centre fold and Letter fold in
- Auto-shift stacking
- Output capacity up to 2,600 sheets
- Optional punching



### System 6

#### The system for corporate documents and brochures

- 55 full colour A4 pages per minute print performance
- Duplex as standard
- Highest image quality
- 4,250 sheets paper input capacity
- Up to 300 gsm (from LU-202 or by pass tray)
- Booklet making up to 20 sheets
- Stapling up to 50 sheets
- Centre fold and Letter fold in
- Auto-shift stacking
- Post insertion
- Output capacity up to 2,600 sheets
- Optional punching





KONICA MINOLTA

Simitri HD  
High Definition Polymerised Toner



## Technical specifications

### Printer specifications

**Print speed A4**  
Up to 55 ppm  
**Print speed A3**  
Up to 33 ppm  
**Print resolution**  
Max.: 600 x 1,800 dpi  
**Gradations**  
256 gradations

### System specifications

**Paper weight**  
64–256 gsm  
Up to 300 gsm (from bypass or LU-202)  
**Duplex unit**  
Non-stack type  
64–256 gsm  
**Paper sizes**  
A5–A3+ (330 x 487 mm)  
**Maximum image area**  
318 x 480 mm  
**Paper input capacity**  
Maximum: 4,250 sheets  
Main unit: up to 1,750 sheets  
LU-202: up to 2,500 sheets  
**Paper output capacity**  
Main tray: 3,000 sheets  
Per sub tray: 100 sheets  
**Warm-up time**  
Less than 420 sec.  
**Main unit dimensions (W x D x H mm)**  
786 x 1,056 x 992 (main unit + original cover)  
**Main unit weight**  
360 kg (only main unit)

### Controller specifications

#### IC-408 internal EFI Fiery controller

**CPU**  
Intel® Celeron @ 2.8 GHz  
**RAM**  
512 MB memory  
**HDD**  
80 GB hard drive  
**Interface**  
Ethernet (10/100/1,000-Base-T)  
**File formats**  
Adobe® PostScript® Level 1, 2, 3,  
PCL  
Adobe PDF 1.4, 1.5, 1.6, 1.7, PDFX  
EPS  
TIFF, TIFF/IT, JPEG  
Fiery® FreeForm™/Fiery® FreeForm™ 2.1  
**Client environments**  
Windows® 2000/XP/Vista™  
Macintosh® OSX or higher

#### IC-305 external EFI Fiery controller

**CPU**  
Intel® Core 2 Duo @ 3.0 GHz  
**RAM**  
1 GB high-speed memory  
**HDD**  
160 GB SATA hard drive  
**Interface**  
Ethernet (10/100/1,000-Base-T)  
**File formats**  
Adobe® PostScript® Level 1, 2, 3  
Adobe PDF 1.4, 1.5, 1.6, 1.7, PDFX  
EPS  
TIFF, TIFF/IT, JPEG  
PPML  
Fiery® FreeForm™/Fiery® FreeForm™ 2.1  
VPS

**Client environments**  
Windows® 2000/XP/Vista™  
Macintosh® OSX or higher

#### IC-304 Plus external Creo controller

**CPU**  
Intel® Core 2 Duo @ 2.4 GHz  
**RAM**  
1 GB system memory  
1 GB image memory  
**HDD**  
80 GB SATA system and user disc  
2x 80 GB SATA image disc space  
**Interface**  
Ethernet (10/100/1,000-Base-T)

**File formats**  
Adobe PostScript 3  
Native PDF  
EPS  
TIFF, TIFF/IT  
JPEG; CT/LW  
Creo Variable Print Specification (VPS)  
PPML

**Client environments**  
Windows® 2000/XP/NT 4.0/Server 2003  
Macintosh OS 9.x and 10.x

### Scanner specifications

**Scan speed A4**  
Up to 39 opm  
**Scan speed A3**  
Up to 22 opm  
**Scan resolution**  
600 x 600 dpi  
**Scan modes**  
TWIN scan  
Scan-to-HDD  
Scan-to-FTP  
Scan-to-SMB  
Scan-to-E-mail  
**Scan formats**  
TIFF (single and multi page), PDF

### Copier specifications

**Copy speed A4**  
Up to 55 ppm (bizhub PRO C5501)  
**Copy speed A3**  
Up to 33 ppm (bizhub PRO C5501)  
**Copy resolution**  
Max. 600 x 600 dpi  
**Gradations**  
256 gradations  
**FCOT**  
Less than 6.5 sec. (colour A4)  
**Magnification**  
25–400% in 0,1% steps  
**Multiple copies**  
1–9,999

### Accessories

**Automatic document feeder DF-609**  
Max.: 100 sheets  
**Large capacity tray LU-202**  
1 magazine  
Paper capacity: up to 2,500 sheets  
Paper weight: 64 to 300 gsm  
Standard paper sizes: B5–SRA3  
Min. paper size: 210 x 182 mm  
Max paper size: 330 x 487mm  
**Booklet finisher FS-607**  
Booklet making for up to 20 sheets (80 images)  
2-point and corner stapling  
Stapling up to 50 sheets  
Centre fold and letter fold in  
Auto-shift sorting and grouping  
Output for up to 2,500 sheets  
Sub tray for up to 100 sheets  
**Staple finisher FS-520**  
2-point and corner stapling  
Stapling up to 50 sheets  
Auto-shift sorting and grouping  
Output for up to 3,000 sheets  
Sub tray for up to 100 sheets  
**Post inserter PI-502**  
**(Option for FS-607/FS-520)**  
Pre-printed sheet insertion  
2 PI trays for 200 sheets each  
**Punch kit PK-512**  
**(Option for FS-607/FS-520)**  
Punching (2 and 4 holes selectable)  
**Punch kit PK-513**  
**(Option for FS-607/FS-520)**  
Punching (4 holes)

- All specifications relating to paper capacity refer to A4-size paper of 80 gsm quality.
- All specifications relating to scanning, copying or printing speeds refer to A4-size paper that is scanned, copied or printed crosswise in multipage, simplex mode.
- The support and availability of the listed specifications and functionalities varies depending on operating systems, applications, network protocols as well as network and system configurations.
- Some of the product illustrations contain optional accessories.
- Specifications and accessories are based on the information available at the time of printing and are subject to change without notice.
- Konica Minolta does not warrant that all specifications mentioned will be error-free.
- Microsoft, Windows and the Windows logo are trademarks, or registered trademarks, of Microsoft Corporation in the United States and/or other countries.
- All other brand and product names may be registered trademarks or trademarks of their respective holders and are hereby acknowledged.

Your Konica Minolta Business Solutions Partner:



**Konica Minolta**  
**Business Solutions Europe GmbH**  
Europaallee 17  
30855 Langenhagen • Germany  
Tel.: +49 (0) 511 74 04-0  
Fax: +49 (0) 511 74 10 50  
www.konicaminolta.eu