

KONICA MINOLTA

bizhub 501

BIZHUB DESIGN: taking productivity to a higher power.



COUNT ON KONICA MINOLTA
bizhub 501



bizhub 501

1
2
3

bizhub 501:

business information in a bold new look

Take a look at high productivity design: the bizhub 501.

Design that transforms your workflow. Powers your printing. Speeds your output. Controls your distribution. Expands your reach. Enhances your security. And grows your business.

High productivity design gives you new ways of moving information. A central document resource with a whole new look and feel. A scalable solution for in-house printing. A networkable workhorse with integrated software.

Take a good look. Because in today's world, your business needs bizhub.

bizhub Only from Konica Minolta

Powerful, high-volume productivity has never looked so good – in your office, and on your bottom line. Sleek styling, small footprint and 360° access save space and speed your workflow. And with 50 pages per minute print/copy output and a monthly duty cycle up to 175,000 impressions – you'll have a scalable solution for any-size business.



bizhub 501: the networkable resource with superior design



▶ **InfoLine status display.** At a glance, it shows you the flow of information in and out: message transmission and reception, device operating status, maintenance alerts and more.

▶ **Large 8.5" color LCD touch-screen.** Controlling your bizhub is a snap, even for first-time users. You'll have simple icons, intuitive menus, short-cut keys to customize commands – even the power to preview and enlarge thumbnail images of documents before you print.

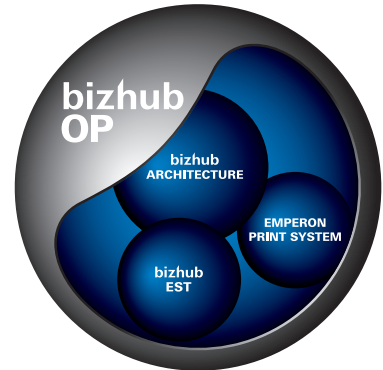
▶ **Universal access.** Tilting panel design makes bizhub access easy for wheelchair-bound employees, in compliance with Section 508. Blue LEDs are also better for visibility – and paper draws slide open smoothly for easy loading.

Document power at the hub of your workflow. This bizhub model looks too good to hide away – and with cords hidden out of sight, they can set up in the center of your office for quick access from any angle.

Online file management. Support for WebDAV (Web-based Distributed Authoring and Versioning) makes it easier to manage files and folders on your web server, identify authors and dates of web pages, lock documents and track file revisions.

IPv6: the next-generation Internet protocol. IPv6 dramatically increases IP addressing power and gives every networked bizhub device its own IP address to facilitate communication and improve security.

High-productivity bizhub OP. Konica Minolta's proprietary bizhub OP (Open Platform) control system adheres, adapts and expands to the needs of your growing IT infrastructure. To keep you connected, bizhub OP is a real design advantage.



Uniform bizhub Architecture. Major functions are consolidated in integrated processing modules for smooth, consistent operation and security – reducing the need for operator training.

Powerful Emperon® printing. The Emperon Print System provides PCL6 and PS3 emulation, and Windows 7 support with native XPS (XML Paper Specifications) interpreter to maximize the print/scan productivity of your bizhub device – powered by a 600 MHz CPU. (optional IC-207 Image Controller required for printing)

The bEST approach to integration. With bizhub Extended Solution Technology (bEST), you're also ready for third-party software integration: print management, cost control, networking and more.

Saving energy, reducing waste. bizhub models provide Power Save and Toner Save modes, low-temperature fusing and other "green" technologies – backed by the Konica Minolta practice of assessing environmental impact over the lifecycle of every product.

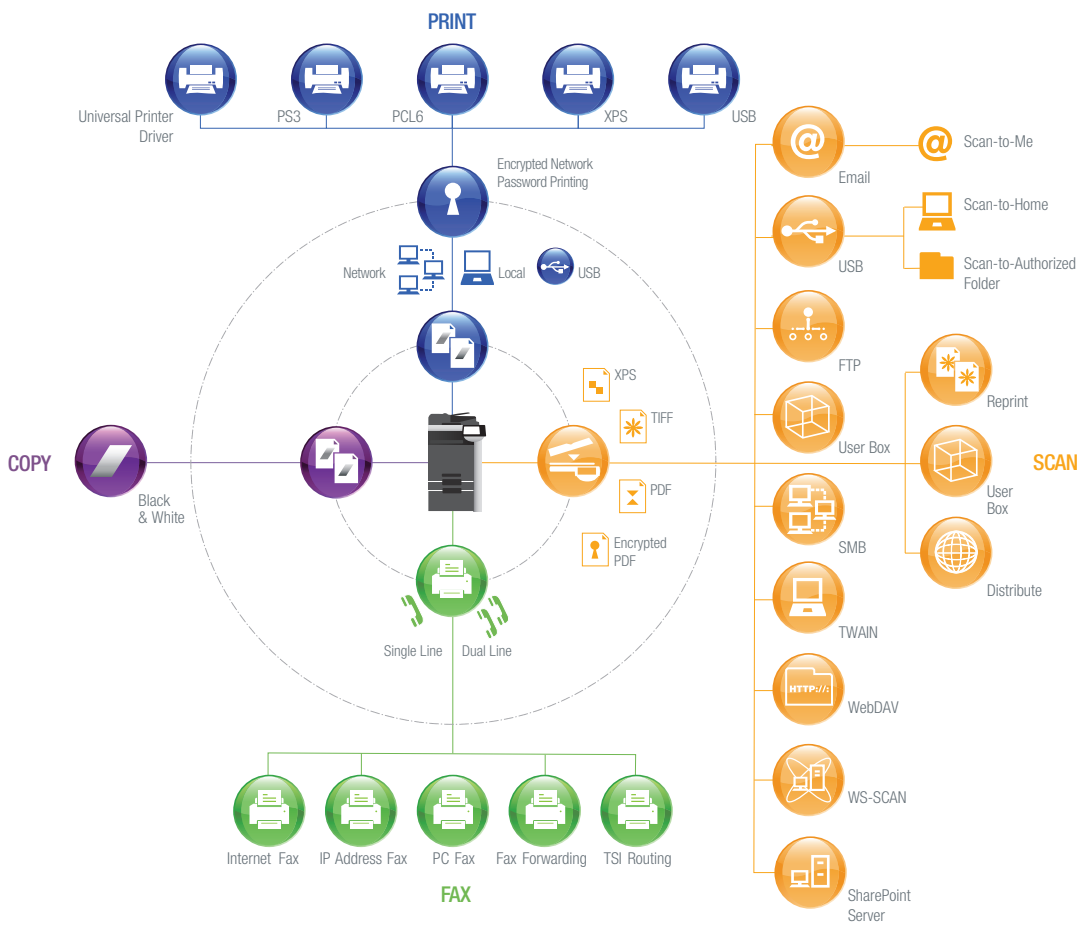
Clean Planet Recycling. Our latest green innovation is the industry's first cost-free program to recycle consumables for all Konica Minolta models. With postage paid UPS labels ready to print from our website, recycling consumables has never been easier.





Faster output speed, greater scanning flexibility, modular finishing options for in-house productivity – bizhub gives you all the power you need to handle high-volume document traffic with superior workflow efficiency that moves information through your office faster. And the IC-207 Image Controller option provides print performance that makes you more productive.

bizhub output: the high-volume solution your workflow demands



Convenient USB transfer. A simple USB Interface option located on the front of your bizhub lets you scan files to a USB thumb-drive and also print files from a USB thumb-drive – including files in PDF, XPS, TIFF and encrypted PDF formats.



Multiple destinations. You can Scan to Email, attaching documents as PDF, XPS or TIFF files. Scan to FTP, for quick access via any PC on your network. Scan to SMB, sending files to shared folders on desktop PCs. Even perform TWAIN scanning from PCs.

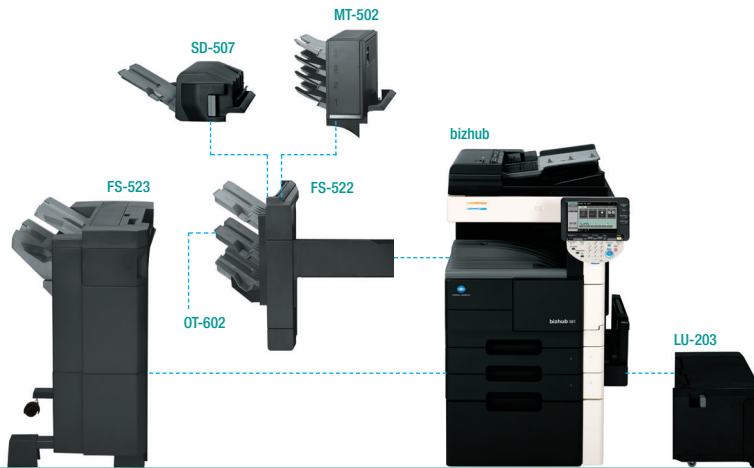
Simultaneous distribution. With bizhub Send function, you can do more work in fewer keystrokes – scanning, Emailing and faxing while simultaneously storing a User Box copy or saving the file to SMB or FTP.

Optional 120 GB HDD. Enhanced User Box functions let you save files on an optional 120 GB hard disk drive, assign User Boxes to individuals, departments or workgroups, even allocate User Boxes by theme, project or goal.

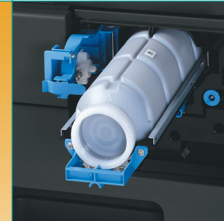
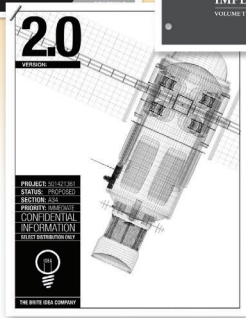
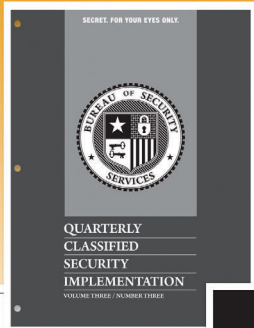
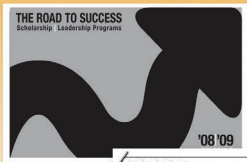
WebDAV. Your bizhub also provides support for WebDAV (Web-based Distributed Authoring and Versioning) – the advanced system that makes it easier to manage files and folders on your web server, identify authors and dates of web pages, lock documents and track file revisions.

WS-Scan (Windows scanning). Push and Pull scanning using DPWS (WSD) Protocol. Supports XPS, JPEG, BITMAP, PNG and TIFF file formats.

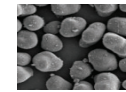
High-speed scanning. The bizhub 501 lets you scan documents at up to 70 originals per minute – more than a page every second. And PDF formatting reduces file size to make documents faster to send and receive.



Modular finishing. Powerful finishing options give you 60-page booklet-making, 50-sheet stapling, half-fold and 2/3-hole punch capabilities – and if you don't need finishing, a Job Separator (not shown) option can separate print, copy, fax and report output jobs.



Pulverized Toner



Simitri



Simitri® Polymerized Toner. The exclusive Konica Minolta toner formulation with finer particles to sharpen edge detail, improve halftone definition and make text more legible.

Flexible paper handling. You can load a maximum capacity of 5,650-sheets (with options) for longer uninterrupted print/copy runs, load up to 110 lb. index stock from bypass and copy, scan or duplex originals up to 11" x 17" in size.

High-volume fax. For all-in-one functionality, the FK-502 Super G3 fax option provides direct faxing from your PC, IP Address fax capability, TSI routing, 2,000-location address book, broadcasting and program dialing – with an optional second phone line to double your input/output.

Industry-leading support. Nothing backs you up like bizhub – and with Konica Minolta's nationwide service network and online support capabilities, you'll have a print powerhouse you can count on.

Doing business better is the whole idea behind bizhub – and in today's networked era, that means more enhancements to maintain security. More ways to protect valuable information. More PageScope® software to speed printing, manage addressing and authentication data, control access and track usage for maximum cost-efficiency.

bizhub integration: the simplicity, security and software you need



HID Proximity-card operation. The optional AU-201H HID Authentication Unit lets you use familiar HID Proximity cards for fast, secure access to bizhub printing, copying and scanning.

Ultra-secure biometric authentication. The optional AU-101 Biometric Authentication Unit recognizes users based on scanning finger vein patterns for secure MFP access and fast "ID-and-print" operation.

► **Industry-leading security protection.** At every stage of your information workflow, bizhub is designed to meet today's most stringent security precautions and regulations.

► **Encrypted PDF files.** Automatically create an encrypted PDF file during scanning, so confidential data is protected as soon as it enters your workflow. In addition to the standard PDF encryption capability, the LK-102 i-Option will allow you to encrypt your PDF with an even higher level of security.

► **ISO 15408 EAL 3 Certified System Security.** Konica Minolta's Target Of Evaluation (TOE) for ISO 15408 certification applies to the entire MFP, providing system-wide, end-to-end security.

► **bizhub Secure Print.** Lets you set password security locks in place on sensitive documents – job estimates, employee evaluations, salary reports, business forecasts and sales figures (optional HDD required).

► **Encrypted Network Password Printing.** Protects the information passing from your PC to your network.

► **IP Filtering.** Registers the IP addresses of PCs that are allowed access to your documents.

► **SSL/TLS Encryption.** Protects data during exchange from bizhub to LDAP servers and PageScope software programs.

► **S/MIME Encryption.** Supports the Secure Multipurpose Internet Mail Extensions encryption standard to protect Email exchanges.

► **HDD Lock.** Applies password-protection locking to the hard disk drive of your bizhub, preventing it from being read even when removed.

► **User Authentication.** Custom-selectable for printing, scanning, faxing and User Box functions – with users identified based on the Active Directory Server, NTLM V1 or V2 Server, NDS Server, LDAP Server or built-in bizhub authentication functions.

► **Job Erase.** Automatically overwrites your HDD up to three times, in compliance with U.S. military standards for the Army (DoD 5220.22-M, Navy (NAVSOP-5239-26) and Air Force (AFSSI5020).

► **HDD sanitizing.** Allows you to overwrite data in 8 different modes in compliance with U.S. military and international security standards – including seven-times overwrite protection (AFSSI5020).

i-Option™: on-ramp to the Internet. For even greater connectivity, the new Konica Minolta i-Option upgrade lets you browse the web from your bizhub control panel, adds new image control capabilities, increases your document security and expands the versatility and convenience of your bizhub workflow.



Powerful PageScope® software. A full suite of software solutions for web-based monitoring and network control, integrated IP addressing and security, enterprise-system integration, personal document management.

PageScope Enterprise Suite Ver.1.2 (optional) addresses the management needs of your Konica Minolta devices with a server-based accounting solution that provides user authentication capabilities as well as a custom display panel based on individual user log-in.

PageScope Account Manager for the central collection of detailed counter readings based on individual users.

PageScope Authentication Manager provides secure password-protected log-in with multiple methods of authentication.

PageScope MyPanel Manager customizes your bizhub display based on user log-in at any MFP on your network.

PageScope Net Care Device Manager. Lets IT administrators manage systems more easily by combining bizhub and other MIB-compliant devices in a single network.

PageScope Web Connection. Gives each bizhub device its own "website" for online access to status information via standard web browsers.

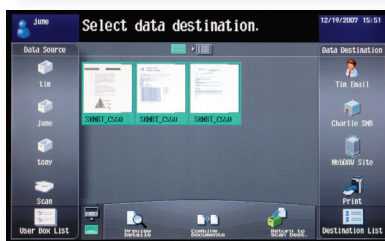
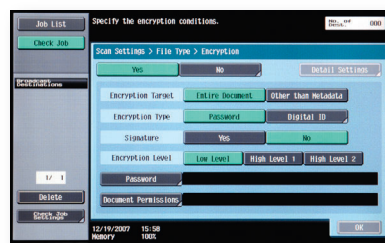
PageScope Print Status Notifier. Alerts you that a bizhub job has finished printing, paper has run out or toner needs replacing.

PageScope Data Administrator™. Manages device user lists, enables account tracking, sets up one-touch Email addresses and manages password and security functions.

Web Browser convenience. Access HTTP pages directly from your bizhub control panel, with simple-to-use navigation keys and PDF file preview with built-in Adobe Acrobat Reader LE.

Image Panel capabilities. View multiple thumbnail pages, manipulate User Box documents, combine documents, move documents, restore changes and scan documents from ADF without storing them in your User Box.

Enhanced PDF encryption. Increase the security of your documents with government-level AES 128-bit encryption – plus the ability to apply digital IDs and signatures.





bizhub 501: general specifications

TYPE:	Digital Printer/Copier/Scanner/Fax
TONER TYPE:	Simitri® Polymerized Toner
MONTHLY DUTY CYCLE:	175,000
PRINT/COPY SPEED:	B&W: 50 ppm (letter, portrait)
PRINT/COPY RESOLUTION:	2400 dpi equivalent x 600 dpi/600 dpi x 600 dpi
SCAN SPEED:	Up to 70 opm (@ 300 dpi, letter)
SCAN RESOLUTION:	200 dpi, 300 dpi, 400 dpi, 600 dpi (B&W only)
SCAN FILE FORMATS:	TIFF, PDF, XPS, Encrypted PDF
MEMORY:	1,024 MB (shared print, copy, scan and fax memory)
HARD DISK DRIVE:	120 GB HDD (optional, shared print, copy, scan, fax)
ORIGINAL SIZE:	Up to 11" x 17" (scanning/copying)
PAPER SIZE:	5.5" x 8.5" to 11" x 17"
PAPER WEIGHT:	16 lb. to 28 lb. bond, Manual Bypass: 13 lb. bond to 110 lb. index
WARM-UP TIME:	Less than 60 seconds
FIRST COPY:	Less than 3.2 seconds (letter)
COPY QUANTITY:	1 - 999
STANDARD PAPER SUPPLY:	500-sheet universal cassette (20 lb.) 500-sheet universal cassette (20 lb.) 150-sheet bypass (20 lb.)
MAGNIFICATION:	Zoom range: 25% - 400%, 0.1% increments Preset reduction: 79%, 77%, 65%, 50% Preset enlargement: 121%, 129%, 155%, 200%
COPY EXPOSURE MODES:	Text (legible text), Text/Photo (clear text and halftones), Photo, Dot Matrix
MAXIMUM PAPER CAPACITY:	5,650 sheets (total, with options)
DOCUMENT FEEDER:	Capacity: 80 sheets, Original size: Up to 11" x 17", 1-sided, 2-sided originals, mixed original detection
POWER REQUIREMENTS:	120V, 60MHz, 12A
POWER CONSUMPTION:	Less than 1,560W
DIMENSIONS (W x D x H):	26.7" x 27.9" x 35.2"
WEIGHT:	Approx. 215 lbs. (Main Unit + ADF)
OPTIONS:	AU-101 Biometric Authentication Unit AU-201H HID Card Authentication Unit AU-204H Magnetic Stripe Card Reader AU-211P CAC/PIV Card Authentication Unit DK-506 Desk/Storage Drawer EK-703 USB Host Board (Local I/F Kit) FK-502 Fax Kit FS-522 Built-in Base Finisher (50 sheets) FS-523 Staple Finisher (50 sheets/includes RU-507 Relay Unit) HD-509 120 GB Hard Disk Drive IC-207 Image Controller JS-502 Job Separator (requires OT-504) LK-101 i-Option LK-102 i-Option LU-203 Large Capacity Unit ML-503 Fax Multi Line MT-502 Mail Bin Kit (for FS-522) OT-602 Output Tray (for FS-522) PC-206 500-Sheet Universal x 2 PC-407 Paper Feed Cabinet (2,500 sheets) PU-501 Punch Kit Unit (for FS-522) SC-505 HDD Encryption Kit SD-507 Saddle Stitcher (for FS-522) SP-501 Fax Stamp Kit UK-202 i-Option Upgrade Kit WT-502 Working Table

AVAILABLE PRINT/COPY FUNCTIONS:	Account Track (100 accounts; 1,000 accounts with optional HDD), APS/AMS, Auto Duplex, Auto Reset, Auto Tray Switching, Bi-Directional Communication (Device Option Setting), Box Function, (Store Copy Jobs, Print Jobs, Scans, Fax Data, Print Stored Data, Route Scanned Data), Copy Modes (Simplex/Duplex, 2-in-1, 4-in-1, 8-in-1, Book Copy (Separation, Book Mode Copy), Copy Protect, Cover Mode, Creative Functions (XY Zoom, Image Centering, Neg./Pos. Reverse, Image Repeat), Criss-Cross Sorting, Encrypted Network Password Printing, Form Overlay, Frame Erase, Energy Save Mode, Enlarge Display, Erase (Border, Frame, Edge) Mode, Finishing (Group, Sort, Staple, Punch, Center Staple and Fold), HDD Random Erase, Image Density Adjustment (Density, Background Removal), Image Overlay, Image Preview (Job Finishing Image Display, Engine Configuration Display), Interrupt, Job List, Job Erase, Job Reserve, LDAP/up to 5 LDAP servers/Global LDAP, OHP Interleaving, Mixplex, Mix-Media, Program/Recall Jobs, Paper Size Selection (APS, Manual), Paper Type Selection, Proof Copy, Secure Printing, Separate Scan, Skip Job Operation, Sleep Mode, User Authentication (Synchronize w/ Account Track), Utility (Meter Count, Environment Setting, Default Setting, OneTouch Setting, Check Consumable Life, Admin. Mode), Watermarks, Zoom Selection (AMS, Fixed Zoom Ratio, User Programmable Zoom Ratio, Manual)
AVAILABLE SCAN FUNCTIONS:	Scan-to-Email, Scan-to-FTP, Scan-to-SMB (Scan-to-Desktop), Scan-to-HDD (Scan-to-User Box), Network TWAIN (HDD TWAIN), Scan-to-WebDAV, Scan-to-USB, WS-Scan, Scan-to-SharePoint
AVAILABLE FAX FUNCTIONS:	Autodialing (1,000 one-touch keys w/o HDD/2,000 one-touch keys w/ optional HDD), Auto Memory Reception, Auto Reduction Printing, Border Erase Transmission, Broadcasting (maximum 621 locations), Bulletin Board, Density Adjustment, Duplex Transmission/Reception, Exposure Mode (Text, Text/Photo, Photo, Dot Matrix), Group Dialing (up to 500 one-touches per group), Image Rotation Transmission/Reception, Mailbox (Private) Transmission/Reception, Memory/Quick Dial, Mixed Originals Transmission, Original Size Designation, Overseas Transmission, Password Transmission/Reception, PC Fax, Polling Transmission/Reception, Priority Transmission, Print Setting for Overnight Reception, Program Dialing (400 programs), Redial, Relay Broadcasting, Relay Transmission, Remote Reception, Timer Transmission, TSI User Box, TSI User Box Routing
FAXING (with fax option):	Super G3 compatibility JBIG data compression 33.6 Kbps modem speed F-Code Support
FAX TRANSMISSION SPEED:	Approximately 2.4 seconds/page
FAX EXPOSURE MODES:	Text, Text/Photo, Photo, Dot Matrix
APPLICATIONS:	Network & Device Management: PageScope Net Care Device Manager PageScope NDPS Gateway PageScope EMS Plug-Ins PageScope Network Setup PageScope Data Administrator HDD Backup Utility PageScope Web Connection User Tools: PageScope Direct Print PageScope Box Operator PageScope Print Status Notifier Font Management Utility Print Utility for Unix bizhub vCare capable
MANAGEMENT TOOLS:	
OPTIONAL SOFTWARE:	PageScope Enterprise Suite Ver.1.2: PageScope Account Manager, PageScope Authentication Manager, PageScope MyPanel Manager



Emperon Print System:*

PROCESSOR:	600 MHz
RAM:	1,024 MB (shared with main body)
HARD DISK DRIVE:	120 GB (shared scan and copier HDD) optional
PAGE DESCRIPTION LANGUAGE:	PCL5e, PCL6 (XL version 3.0) Emulation, PS3 (version 3016) Emulation, XPS (XML Paper Specification)
FONTS:	PCL Resident Fonts: 80 outline, PS3 Emulation Resident Fonts: 137 outline
PRINT DRIVERS:	PCL6: Windows 2000, Windows XP (Home/Professional), Windows Server 2003 (x32,x64), Windows XP Professional (x64), Windows NT 4.0, Windows Vista (x32, x64), Windows Server 2008 (x32, x64), Windows 7 (x32, x64) PS3: Windows 2000, Windows XP (Home/Professional), Windows Server 2003 (x32,x64), Windows XP Professional (x64), Windows Vista (x32, x64), Windows Server 2008 (x32, x64), Windows 7 (x32, x64) Universal PS3 and PCL: Windows 2000, Windows XP, Windows Server 2003 (x32, x64), Windows Vista, Windows Server 2008 (x32, x64) XPS: Windows Vista (x32, x64), Windows Server 2008 (x32, x64), Windows 7 (x32, x64) Mac: OS 9.2 (PPD File), OSX 10.2, 10.3, 10.4, 10.5, Intel-based 10.4, 10.5 (print driver)
STANDARD INTERFACES:	10Base-T/100Base-TX/1000Base-T, USB 2.0 (optional)
PROTOCOLS:	TCP/IP, IPX/SPX, AppleTalk (EtherTalk), LPR, SMB, LPD, Netware (4.x, 5, 6), Pserver, N Printer, NDPS, IPP 1.1, SMTP, POP3, LDAP, SSL, SNMP, HTTP/HTTPS, IPv6, DPWS (WSD)

*IC-207 Image Controller required for printing.

COUNT ON KONICA MINOLTA

© 2011 KONICA MINOLTA BUSINESS SOLUTIONS U.S.A., INC.
All rights reserved. Reproduction in whole or in part without written permission is prohibited. Konica Minolta is a trademark of KONICA MINOLTA HOLDINGS, INC. bizhub, Emperon and PageScope are registered trademarks of KONICA MINOLTA BUSINESS TECHNOLOGIES, INC. Simitri is a registered trademark of KONICA MINOLTA BUSINESS SOLUTIONS. Simitri is a registered trademark of KONICA MINOLTA BUSINESS SOLUTIONS. Fiery is a trademark of EFI. Creo is a trademark of Creo. All other brands and product names are registered trademarks or trademarks of their respective owners.

Design and specifications are subject to change without notice. Some functions may require options, which may or may not be available at time of launch.



KONICA MINOLTA

KONICA MINOLTA
BUSINESS SOLUTIONS U.S.A., INC.
100 Williams Drive
Ramsey, NJ 07446
www.CountOnKonicaMinolta.com
www.kmbs.konicaminolta.us

bizhub



Simitri



bizhub care

