



KONICA MINOLTA

MINIMISE ALL. MAXIMISE ALL.

bizhub

C281/C221/C221s



Giving Shape to Ideas



Three compact achievers that outdo in all offices



With optional Reverse Automatic Document Feeder DF-627 equipped

bizhub c221

22 ppm colour output (A4) MFP with standard automatic duplex printing



With optional Reverse Automatic Document Feeder DF-627 and Desk DK-512 equipped

bizhub c281

28 ppm colour output (A4) MFP with standard automatic duplex printing



With optional Original Cover OC-513 equipped

bizhub c221s

22 ppm colour output (A4) MFP

* Automatic duplex unit can be added to bizhub C221s after purchase.



Incredibly compact A3 colour multi-functionals

■ The narrowest*¹ main unit width in their class

A slim body with a width of just 559 mm makes the bizhub C281 series the narrowest*¹ MFPs in their class. They can be installed in more locations in the office including on desktops or even the floor with the optional Desk DK-512 equipped.

*¹ According to Konica Minolta research as of December 2013.

■ Function-packed in a compact size

Despite their slim bodies, the bizhub C281 achieves high-speed outputs of 28 ppm in colour (A4), while the C221 and C221s deliver outputs of 22 ppm in colour (A4). Two paper cassettes and a manual bypass feeder are standard equipped for a maximum paper feeding capacity of 1,150 sheets. The upper cassette holds A4 size paper and the lower cassette A3 size paper while the bypass feeder can be used when required.





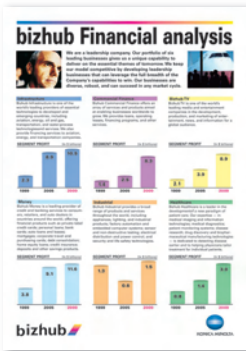
Emperon controller for advanced printing performance

Standard PDL including PCL, PostScript and XPS

Various PDLs (Page Description Language) – including PCL for general business applications such as Microsoft office, PostScript used for graphic design and DTP, and XPS which supports Windows Vista or later office systems – are supported for smooth print outs. Mac OS is also supported by the commonly used PostScript PDL.

Class-above printing quality

Like the higher-end bizhub MFPs, the bizhub C281 series adopt Konica Minolta's proprietary Emperon controller. Its advanced image processing delivers richer gradations by changing dot sizes.



Direct printing with PageScope Mobile*1 and USB memory devices

The C281 series let you print directly from iPhones / iPads and Android mobile devices installed with PageScope Mobile*1 or from USB memory devices.



*1 Free Apps (can be downloaded from Google Play or App Store).



Download from the App Store



Download from the Google Play

PAGE SCOPE Mobile for iPhone/iPad



PAGE SCOPE Mobile for Android



Scanning functions for a variety of uses

SMB / FTP / Email / WebDAV compatible for a wide range of needs

Scanned data can be sent to SMB servers, FTP servers and WebDAV servers directly or as email attachments. This high level of versatility and convenience help make jobs flow smoother and more comfortably.

- Scan to SMB
- Scan to FTP
- Scan to WebDAV
- Scan to E-Mail

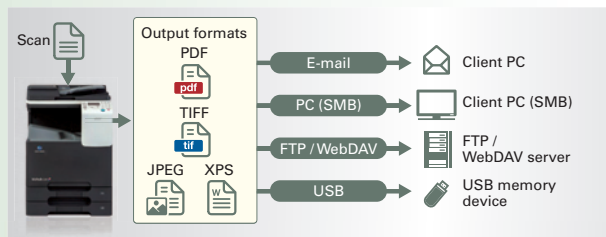
Save scanned files into various file formats

Scanned data can be saved in various file formats according to requirement including PDF, JPEG and XPS.



Send and save scanned data directly

Use PageScope Mobile to send scanned data to iPhones/ iPads and Android mobile devices. Scanned data can also be saved directly to USB memory devices without the hassle of using a PC to make scanning work quick and easy.



Advanced network support

Gigabit (10/100/1000base) high-speed network

The bizhub C281 series is standard equipped with 10/100/1000base high-speed network function to meet the network environments of large-scale offices. IP filtering and WSD (Web Services on Devices) are also supported.



Cloud connectivity via PageScope Mobile

Various cloud services can be accessed from iPhones/ iPads and Android mobile devices installed with PageScope Mobile. Cloud services widely used in various business situations can be accessed to and from the bizhub via mobile devices.





Convenient functions that are easy to use

■ ID (card) copy function with one-touch access

An independent button for the frequently used ID (card) copy function is included on the control panel for easy one-touch operation.

■ High quality colour reproduction and two-colour mode

In addition to vivid colour and monochrome outputs, a two-colour mode is also available for black + red outputs. It can be selected and used to match the document or purpose.

■ **“N-in-one printing/copying function”** aggregates multiple pages onto one sheet to save paper.

■ **“Watermark security function”** adds text on the entire page of copies to prevent unauthorised duplications.

* When using PCL driver only.

■ **“Cover mode”** allows different types of paper than the body pages to be fed for the cover.

■ **“Blank Page Removal function”** skips blank pages contained in the original when scanning.



Outstanding environmental performance

■ Low-noise design for a quieter office

The bizhub C281 series reduces operating noise by employing fewer fans and a design that minimises noise from emitting outside the machine.

■ Simitri HD toner

Simitri HD toner reduces environmental impact during its production and consumes less power during use thanks to low-temperature fusing. The black toner is carbon neutral as it is produced with plant-based biomass materials.

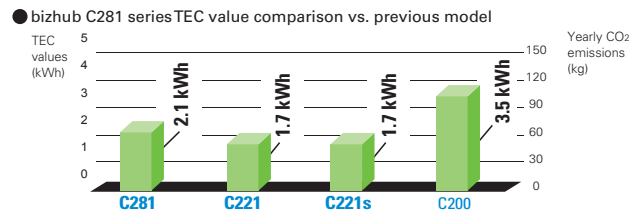
■ Power button for easy energy saving

The bizhub C281 series can easily be switched to Sleep mode by pushing the Power button. In addition, “ErP Auto Power Off” mode, which supports the ErP Directive*1, easily saves power when the bizhub is not in use.

*1 ErP Directive, also known as Eco-design Directive, is the EU Framework Directive which defines the environmentally conscious design requirements for energy-related products.

■ Easily clears Energy Star Program TEC values

The bizhub C281 series’ energy-saving design clears the Energy Star Program Ver. 2.0 TEC values by a large margin. TEC values are even much lower than the previous model helping to significantly reduce CO₂ emissions.



* Values for 220 to 240 V

* TEC values applied to the International Energy Star Program Version 2.0

Yearly CO₂ emissions:

TEC value × 52 weeks × emission factor

(From the November, 2011 press release by Japan’s Ministry of the Environment.)



Model shown is C281 with options.

bizhub c281/c221/c221s

C281
Colour B&W
28/28
ppm

*1

C221
Colour B&W
22/22
ppm

*1

C221s
Colour B&W
22/22
ppm

*1

Resolution
600
dpi

SRA3

*2

Scan
Colour B&W
22/28
opm

*3

Emperon
Driven!

USB
Print

Fax

Mobile
Support

Simitri
with Biomass

*1 Output speed will be reduced for one-to-one colour copy (600 × 600 dpi) outputs.

*2 When using the Multiple Bypass Tray.

*3 When using optional Reverse Automatic Document Feeder DF-627 (A4 simplex, 300 dpi)

*4 Optional

For more information please visit the bizhub Web site at

http://www.biz.konicaminolta.com/colour/c281_c221_c221s/index.html



Product appearance, configuration and/or specifications are subject to change without notice. This product is not available for some countries or regions.



The KONICA MINOLTA logo, symbol mark, “Giving Shape to Ideas”, bizhub, PageScope, Simitri, Simitri HD, Emperon, Emperon logo, Optimised Print Services logo and their respective logos are registered trademarks or trademarks of KONICA MINOLTA, INC. Android and Google play are trademarks or registered trademarks of Google Inc. in the United States and other countries. Mac OS, App Store, iPhone and iPad are registered trademarks or trademarks of Apple, Inc. in the United States and other countries. Windows Vista is a registered trademark or trademark of Microsoft Corporation in the United States and other countries. All other brands and product names are registered trademarks or trademarks of their respective companies or organizations.

Ecology & Environment

KONICA MINOLTA products are designed with the environment in mind.

- Energy Star
- Eco-friendly Toners
- RoHS Compliance
- Production at ISO Certified Factories
- WEEE Compliance



KONICA MINOLTA
OPTIMISED
PRINT SERVICES™

From consulting, system design, to operations, Konica Minolta offers total support to optimise your office output environment.

<http://www.biz.konicaminolta.com/services/ops>

⚠ Requirements for safe use

- Please read and follow the instruction manual to ensure safe operation.
- Only operate using appropriate power supply and voltage.
- Connecting the earth wire to an inappropriate place may cause explosion or electric shock. Please connect accordingly (Taiwan and the Philippines only).

KONICA MINOLTA, INC.

2-7-2 Marunouchi Chiyoda-ku, Tokyo, Japan
<http://www.biz.konicaminolta.com>

9251-3224-01 Printed in Japan