



Giving Shape to Ideas

Konica Minolta Print Production. Superior Quality, Digital Economy.

production



Professional.

Konica Minolta color and B&W production printers offer superior performance and unsurpassed value for graphics professionals – delivering the power to increase your output, reduce your costs and satisfy your clients. You'll have digital color quality to rival offset prints, with advanced workflow and color management tools for reducing costs and fine-tuning accuracy. High speeds, simple setup and long-run image stability increase your efficiency. Inline finishing options get the job done right. Purpose-built reliability stands up to rugged production demands, with integrated software from leading graphic communication industry providers, IT solutions and more – all from a professional partner you can count on.



Quality.

Konica Minolta's unique Screen-Enhancing Active Digital (SEAD IV) system combines highly accurate exposure controls, precision pixel placement and advanced screening to achieve resolution equivalent to 3,600 dpi. You'll also have flexible processing and image smoothing control to match the needs of any customer file.



Color.

Konica Minolta knows color. Our bizhub PRESS professionals can bring you pro-quality digital color at up to 100 ppm – 5,000 impressions or more per hour, through robust monthly duty cycles that stand up to the daily punishment of high-volume production. Whether you're doing small-lot jobs on tight turnaround or long print runs with complex finishing requirements, you'll get them out the door on time – spectacular full-color photo books and product brochures, direct-mail flyers, colorful newsletters, graphics presentations and more.

Monochrome.

Getting it done in B&W. Konica Minolta high-speed B&W digital presses lead the industry in workhorse performance, high-resolution monochrome image quality and flexible substrate handling – ideal for training and instruction manuals, transactional printing, corporate reports, on-demand book publishing and more. Purpose-built reliability and workhorse production output stands up to rigorous long-run production, with cost-efficiency that protects your bottom line.

Embedded Control.

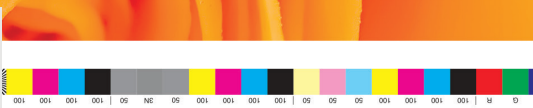
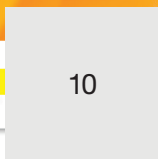
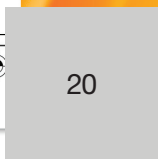
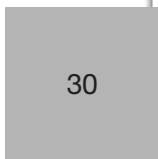
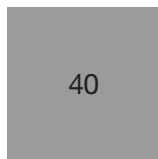
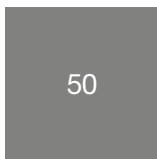
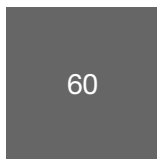
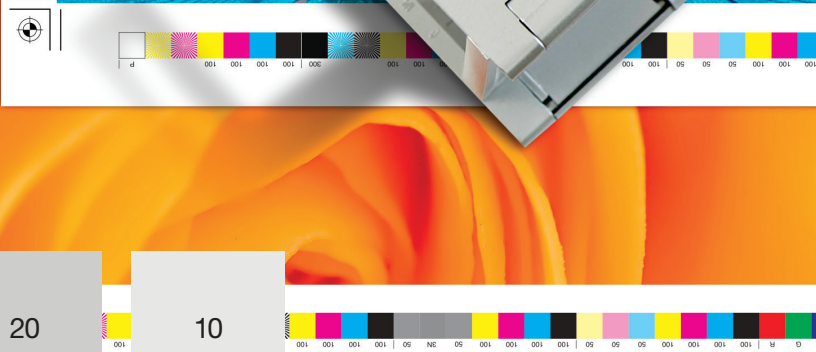
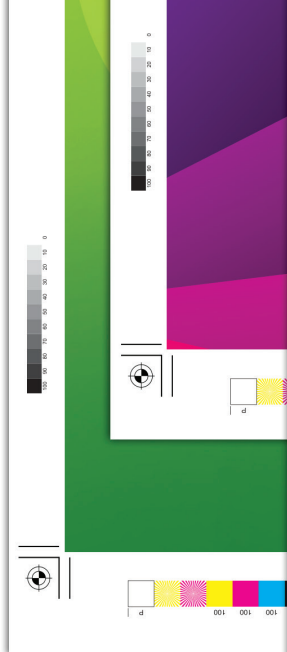
Get the most from your bizhub PRESS. Konica Minolta's internal image controller was developed in-house for powerful, affordable color management. Job Centro functionality lets you hold up to 100 jobs in queue, editing pages and job tickets with drag-and-drop ease – even without special training. Color Centro technology lets you edit color with visible adjustments on screen. You'll have all the color tools you need, including calibration, tone curve adjustment with before-and-after comparison, an expandable library of spot colors (Pantone, Toyo, DIC and HKS) and more.

Bindery.

Pro-quality options for every need. Stapling and hole-punching. 200-page saddle-stitch booklets. 600-page perfect-bound books. 6 folding options, including inline gatefold. Inline GBC punching and ring binding. A 5,000-sheet stacker with rollaway cart can quickly move your finished output to offline bindery. We also offer near-line full-bleed edge trimming and square folding.

Alliances.

Best-in-class partners on your team. Konica Minolta's strategic partnerships with production professionals like EFI, Kodak Creo, Watkiss, SDD, Lasermix, PageDNA, Xrite and others extend the range of capabilities we can offer you — another reason why production print professionals count on Konica Minolta for all of their digital printing needs.



External Control Options.

Advanced color management tools. Fiery and Creo external image control options give graphics professionals advanced color management and production benefits. Fiery delivers improved color performance and upgraded functions, including hot folders, job batching, sample printing and more. Creo features advanced color profiling and destination profiles to spot colors, a complete Pantone GOE library, color sets, and full integration with Kodak Prinergy.

And More.

A wide array of wide-format printers. As an example of our strategic alliances, we can provide printers for specialized wide-format print applications in graphics, architecture, engineering and construction — giving your shop high-speed wide-format output, cut-sheet feeder options and fully integrated stacking and folding capabilities.

High-Volume Color

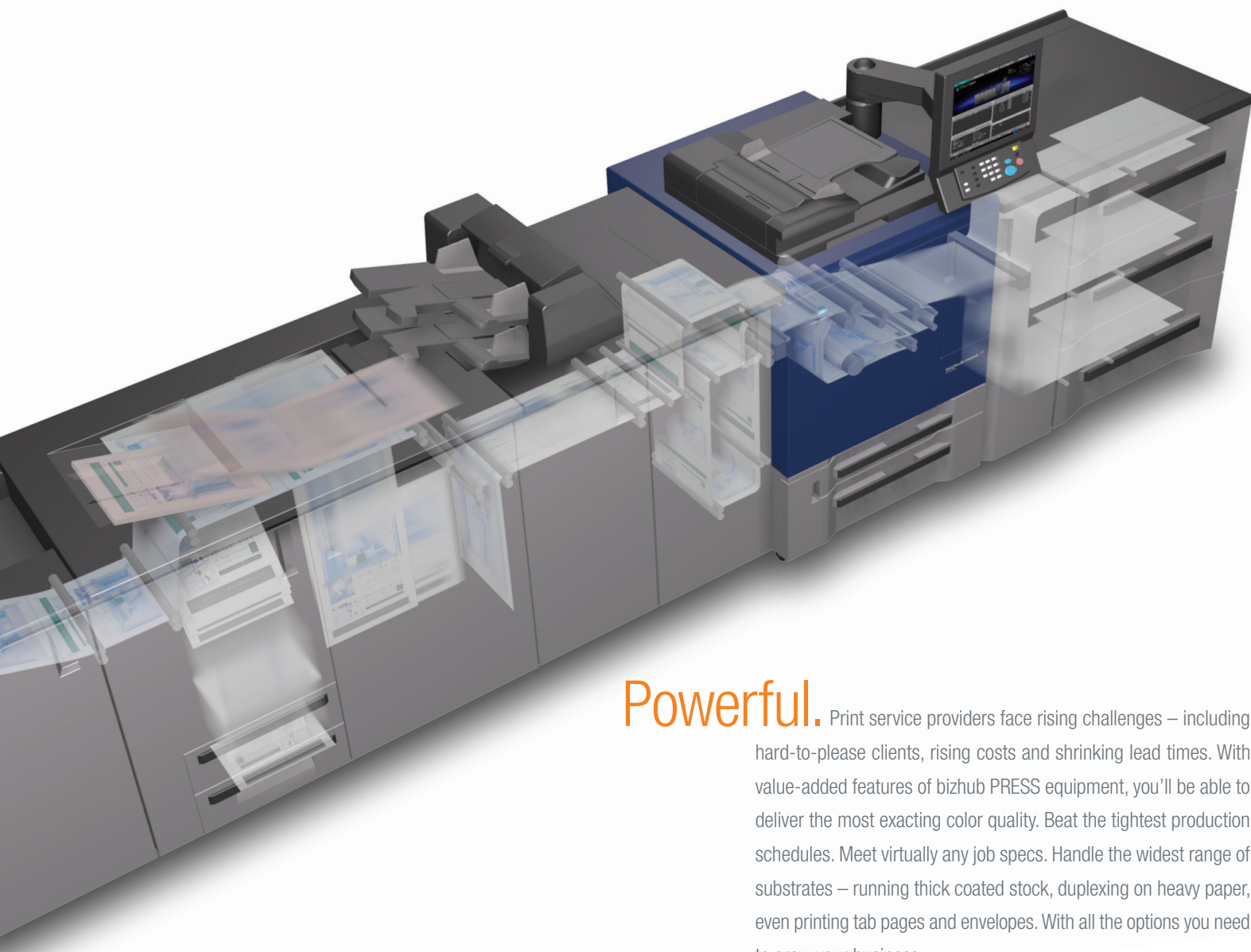
bizhub PRESS C1100
bizhub PRESS C1085
bizhub PRESS C70hc
bizhub PRESS C1070
bizhub PRESS C1070P
bizhub PRESS C1060
bizhub PRO C1060L

Digital B&W Presses

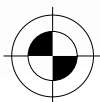
bizhub PRESS 2250P
bizhub PRESS 1250
bizhub PRESS 1250P
bizhub PRESS 1052
bizhub PRO 951

Wide-Format Models

KIP C7800
KIP 9900
KIP 7970
KIP 7770
KIP 7170
KIP 700



Powerful. Print service providers face rising challenges – including hard-to-please clients, rising costs and shrinking lead times. With value-added features of bizhub PRESS equipment, you'll be able to deliver the most exacting color quality. Beat the tightest production schedules. Meet virtually any job specs. Handle the widest range of substrates – running thick coated stock, duplexing on heavy paper, even printing tab pages and envelopes. With all the options you need to grow your business.



Stability.

Inline sensing for long-run precision. Automatic density adjustment, improved position accuracy and enhanced front-to-back registration control combine to keep your output stable without operator intervention. Real-time engine calibration is done inline to stabilize color values. Our enhanced color feedback system measures both CMYK and RGB for greater accuracy. The visible result: smoother edges, more legible text, and maximum color density without granularity or moiré distortion.



High Chroma.

Amazingly rich, vibrant color. bizhub High Chroma, or "hc", models use a special color toner formula that goes beyond the reproduction capabilities of conventional toner. With High Chroma, your production print output can have rich, fluorescent visuals. Colors become significantly brighter and more vivid. Presentations are more convincing. Packaging jumps off the shelf. And direct-mail campaigns come alive to pull higher response rates.



Certification.

Konica Minolta's digital presses were among the first to receive the IDEAlliance Digital Press Certification, passing all requirements for CRACol and G7 gray balance reproduction. G7 signifies a new level of color consistency – a specific colorimetric definition of grayscale balance in mid-range tones, weight and contrast. From highlights to shadows, corporate colors, products and services reproduced on G7 certified systems will look the same, be color-matched across media and on various substrates – even in different locations.



Experts.

Helping you get there faster. For print providers, attaining G7 Master Printer status can be an important next step in growing your business – and Konica Minolta has G7 experts available to help you bring your production facility to G7 status. Our team includes specialists who have completed the G7 Expert Training program and are experienced in color management, proofing quality control, prepress, plate making and print processes in offset as well as digital print.

Strength.

These are purpose-built professionals. Whichever bizhub PRESS or bizhub PRO model you choose, you'll have robust design combining a powerful iron box-type chassis with long-lasting parts, heavy-duty metal paper trays and high-yield consumables. A manageable overall footprint saves space on your production floor.



Color Care.

Accurate, repeatable and easy. Konica Minolta's Color Care Suite is a comprehensive color management solution for measuring, managing and controlling color output. Color Care enables you to maintain consistent, accurate color values without subjective guesswork or complex measurements and manual settings. And our CurveCore option helps you generate gray balance curves that meet the G7 standard. Color Care is a Certified G7 system by IDEAlliance.

Measurement.

Precision in the palm of your hand. Add the Konica Minolta FD-5 Spectrodensitometer to your color control system, and you can measure color values more accurately on any substrate. The process is simple, including both UV-included and UV-excluded measurements – and it's also the industry's first spectrodensitometer with an internal measurement light source matching CIE illumination D50 standards (ISO 3664-2009 compliant).

Simitri HD^E

Brilliance.

Color that surpasses offset printing. Konica Minolta's next-generation Simitri HD^E polymerized toner captures an expanded color gamut for superior accuracy. Deep blacks help colors pop. Improved magenta makes reds more vivid and enhanced electro-photographic properties make skin-tones more accurate and natural. Our 3-dimensional polymer structure adheres more precisely to rough paper surfaces. And 10% higher overall percentage of pigment creates rich areas of solid color and a smooth, natural luster on both glossy and matte stock.



Scanning.

Copy, scan and store. Most bizhub PRESS models offer document copy and scanning capabilities to speed your workflow. Large color touchscreens provide comprehensive user guides, with pull-down menus and point-and-click control for hands-on job management at the machine. Our latest models even provide an on-screen paper catalog with data you can load and update via web-based or USB input.



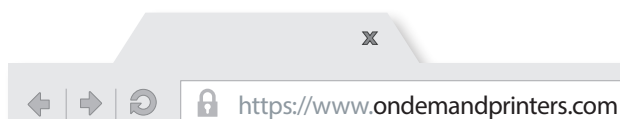
Process Automation.

Reduce touches, improve productivity, increase profits. Konica Minolta's game-changing automation tool lets you to offer your customers web-enabled, menu-based order control in a fully automated production process. Each customer selects from a secure menu of the print products they need: flyers, brochures, marketing bulletins, newsletters and more. Digital storefronts are fully integrated with your production cycle, through job ticketing, printing and delivery – and you can increase your output and capacity without adding expense to your bottom line.

Marketing Automation.

Multi-channel marketing tools to grow your business. With support for print, email, web, text messaging, PURLs, QR codes and social media, EngageIT XMedia gives you a fully integrated marketing tool to broaden your reach and realize today's hottest new media opportunities. Pull-down menus allow users to create targeted campaigns. And plug-and-play templates are easy to customize, opening up new opportunities for growth and additional revenue.

Thank You for signing up and referring a friend! Use promo code #12345 to get 20% off! Reply STOP to opt out.



https://healthcaremed.ondemandprinters.com/event=offer



Profitable.

Profitable operation depends on more than print quality. You need a system enabling streamlined, automated workflows that allow web job submission to reduce overall manufacturing costs. On your production floor, every bizhub PRESS professional is a perfect fit – small footprint, network integration and touchscreen operation without special training. And together with award-winning automation solutions like EngageIT Automation, you'll have 24/7 job input, job ticketing and a fully integrated production cycle.





Queue Management.

The right printer for every job. Printgroove POD Queue helps you optimize device management on your print floor, recommending the most suitable output device based on speed or cost and automatically forwarding jobs to the correct printer. Jobs can also be split up among separate devices for optimal speed and efficiency, then automatically merged together in proper order for finishing.

Partner Solutions.

Integrated 3rd-party software. All bizhub PRESS and bizhub PRO devices provide smooth integration with a wide range of 3rd-party production solutions for web-to-print, variable data and more. You can personalize direct-mail flyers, advertising circulars, event announcements and billing statements, all in color at affordable costs – opening up new opportunities to serve your customers and grow your business.

Substrate Handling.

The sizes you want, in the capacity you need. With options, your bizhub PRESS and bizhub PRO equipment handles a wide range of sizes and weights – up to 13" x 19.2", in paper stocks from 55 to 350 gsm. You'll be able to load up to 13,500 sheets in multiple paper trays. Air separation helps both thick and thin stocks move more easily. Humidification and de-curling capabilities keep jobs moving quickly for direct-to-bindery operations.

Data Conversion.

Handling any print stream. Konica Minolta data conversion software portfolio includes industry-leading applications that enable you to receive mainframe and competitive print streams and output PostScript streams to bizhub PRESS and bizhub PRO equipment.



Environment.

Protecting the planet is a top priority at Konica Minolta.

As part of our worldwide Corporate Citizenship program, we pursue a broad array of environmental initiatives – eliminating pollutants, reducing energy consumption, and creating products and solutions that help our customers realize their own sustainability goals.

Clean Planet.

Recycling made easier. Konica Minolta's Clean Planet program provides cost-free recycling for all our consumables, including toner cartridges and bottles, imaging units, developer and drums – with prepaid shipping labels and cost-free packaging. We can even arrange pickup from high-volume users.

Impact.

Brilliant, vivid color images. Our exclusive Simitri toner formulation uses plant-based biomass material to reduce environmental impact – and also fuses to paper at lower temperatures, saving energy as it improves your image.

Sustainability.

A priority for every professional. Konica Minolta's exclusive Simitri toner formulation uses plant-based biomass material to reduce environmental impact. Our bizhub PRESS professionals make greater use of recycled PC/ABS resins and bioplastics in construction.

Eco Vision 2050.

A vision for the future. With Konica Minolta's Eco Vision 2050, we're committed to a mid-century goal of reducing CO₂ emissions by 80% over 2005 levels, minimizing greenhouse gases that may contribute to global warming. We pursue that goal every day – minimizing energy consumption, cutting pollution and using recycled materials in construction.



KONICA MINOLTA

© 2014 KONICA MINOLTA BUSINESS SOLUTIONS U.S.A., INC. All rights reserved. Reproduction in whole or in part without written permission is prohibited. KONICA MINOLTA, the KONICA MINOLTA logo, Count on Konica Minolta, bizhub, bizhub PRO, bizhub PRESS, PageScope, and Giving Shape to Ideas are registered trademarks or trademarks of KONICA MINOLTA, INC. All other product and brand names are trademarks or registered trademarks of their respective companies or organizations. All features and functions described here may not be available on some products. Design & specifications are subject to change without notice.

KONICA MINOLTA BUSINESS SOLUTIONS U.S.A., INC.
100 Williams Drive, Ramsey, New Jersey 07446

CountOnKonicaMinolta.com



Item #: PROPRIETARY
6/14

