

LANIER

Lanier MPCW2200SP

Wide Format Colour Digital
Imaging System

Copier Printer Fax Scanner



3.2 Monochrome
ppm

1.1 Full-Colour
ppm

add colour to wide format workflows

The Lanier MPCW2200SP combines full-colour output with exceptional versatility to meet a wider range of wide format workflow demands. The affordable, full-colour low-volume digital imaging system offers print, copy and scan functionality to ensure essential large documents can be captured, saved and shared with incredible ease and simplicity. Present design plans, documents, schematics and more in brilliant colours - exactly the way they were designed.

Versatile performance to do more

The Lanier MPCW2200SP offers incredible multifunction performance, including copying, scanning and printing, to streamline low-volume, wide format workloads for CAD-centric organizations, such as architectural, construction and engineering firms. With full-colour output, you can create compelling, professional-quality documents to put your work in the best light. Choose from multiple paper sizes and weights in order to meet every demand and manage every project with ease from the device or from the desktop.



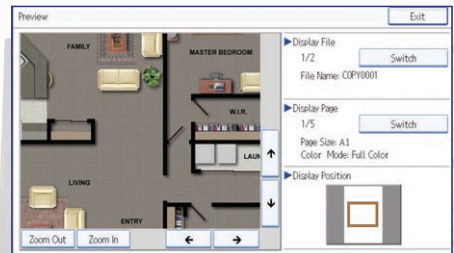
Intuitive functionality makes it easy

The Lanier MPCW2200SP is designed to work the way you do. Take advantage of embedded SDK architecture to integrate highly productive Lanier applications such as GlobalScan NX as well as the 8.5" (21.6 cm) tiltable operator panel to configure workflows and to set up easy, one-touch shortcuts for frequently used tasks and personal preferences. A simplified display and step-by-step animated guide ensure easy operation for every user. Users can also replace proprietary ink cartridges in moments without swapping print heads for longer-lasting performance and less waste.



Advanced scanning streamlines operations

With the Lanier MPCW2200SP digital imaging system, you can share high-quality colour or black-and-white electronic documents quickly and easily at no additional cost. The Lanier MPCW2200SP lets you scan full-colour originals and distribute them via Scan-to-Email/Folder/FTP/HDD. Take advantage of Scan-to-URL to give users in the field immediate access via any Web browser. Save files directly to a USB or SD card for mobile convenience. In addition, full-colour thumbnail views allow users to review documents for accuracy and clarity before delivery.



full-featured capabilities in full colour

The Lanier MPCW2200SP combines full-colour output with exceptional versatility to meet a wider range of wide format workflow demands. The affordable, full-colour low-volume digital imaging system offers print, copy and scan functionality to ensure essential large documents can be captured, saved and shared with incredible ease and simplicity. Present design plans, documents, schematics and more in brilliant colours - exactly the way they were designed.

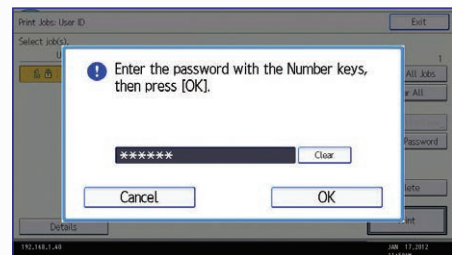
Outstanding paper feeding

Take advantage of uninterrupted workflow and improve your productivity. The Lanier MPCW2200SP includes multiple paper feeds to ensure users have the right kind of paper to handle every project with consistent speed and efficiency. With optional two-roll printing, the system can accommodate various-sized paper rolls and change them automatically. Users can print on the appropriately sized paper to reduce paper waste without having to walk to the device and spend critical time changing paper manually.



Powerful security

Protect confidential and proprietary documents with a host of advanced security features. With user authentication, print jobs are stored and released only when the authorised user swipes an ID card or enters a password at the device. PDF encryption protects the integrity of scanned, password-protected PDFs during distribution. The device includes the DataOverwriteSecurity System (DOSS) feature to automatically destroy latent images and data on the HDD. Administrators can even restrict access to specific functions for each individual user.



External media convenience

The Lanier MPCW2200SP is designed to enhance efficiency for every user - especially for those on the go. With the built-in USB and SD card slots, users can Scan-To or generate prints directly at the device using a USB memory or SD card for optimal on-the-go flexibility. It also supports an optional keyboard unit for users who prefer traditional keyboard input to a touch screen. In addition, users can even print from most manufacturer's mobile devices to ensure they have important documents at the most critical times.



Main Specifications

GENERAL SPECIFICATIONS

Configuration	Console
Scanning Element	CIS Colour Scanner (Moving original)
Printing Process	On demand Piezo inkjet system
Ink Type	Pigment-based ink (All 4 colours)
System Memory	3GB
HDD	250GB
Warm-up Time	Less than 40sec
First Copy Time	A0 SEF: (B/W)
(from Standby mode)	Speed Priority Mode: 51sec/ Standard Mode: 71sec (Colour) Speed Priority Mode: 155sec/ Standard Mode: 244sec
Copy Resolution	A1 LEF: (B/W) Speed Priority Mode: 29sec/Standard Mode: 41sec (Colour) Speed Priority Mode: 84sec/ Standard Mode: 131sec
Original Scan Size	600dpi Maximum: 914mm x 15,000mm Minimum: 210mm x 210mm
Original Paper Weight	Paper Feed Guarantee: 0.035 – 1.0mm Image Quality Guarantee: 0.090 – 0.2mm (64 – 190g/m ²) Feed to Carrier Sheet: 0.070mm and less
Original Paper Width	210 / 257 / 297 / 364 / 420 / 440 / 490 / 515 / 594 / 610 / 620 / 625 / 660 / 680 / 707 / 728 / 800 / 841 / 880 / 914.4 (mm)
Output Paper Size	Maximum Roll Feeder – Width: 914.4mm, Length: 15,000mm Maximum Bypass – Width 914.4mm, Length: 2,000mm
Output Paper Weight	Minimum – Width 279.4mm, Length: 210mm Roll Paper: 51 – 190g/m ² Cut Sheet: 51 – 220g/m ²
Roll Paper Width	297 / 364 / 420 / 440 / 490 / 515 / 594 / 610 / 620 / 625 / 660 / 680 / 707 / 728 / 800 / 841 / 880 / 914.4 (mm)
Paper Type	Plain Paper, Recycle Paper, Inkjet Plain Paper, Tracing Paper, Matte Film, Coated Paper, Coated Paper (CAD), Special Paper
Copy Speed (CPM)	A0 SEF: (B/W) Speed Priority Mode: 1.8cpm/Standard Mode: 1.1cpm (Colour) Speed Priority Mode: 0.6cpm/Standard Mode: 0.3cpm
Reproduction Ratio	A1 LEF: (B/W) Speed Priority Mode: 3.4cpm/Standard Mode: 2.0cpm (Colour) Speed Priority Mode: 1.1cpm/Standard Mode: 0.6cpm
Zoom	25%, 35.4%, 50%, 70.7%, 141.4%, 200%, 282.8%, 400%
Multiple Copying	25% – 400% by 0.1% Step
Paper Feeding Capacity	1 to 99 1st Roll and Optional 2nd Roll: One Roll Paper each, Width: 279.4mm – 914mm Max. length: 150,000mm, Max diameter: 176mm Bypass: One sheet
Paper Output Capacity	10 Sheets (Plain Paper)*
*2" core roll cannot stack because the curvature factor is too small.	
Paper Cut Method	Preset size cut/Synchronized cut/Variable cut
Power Source	220 – 240V 50 – 60Hz, 1.9A 120 – 127V 60Hz, 3.6A
Max Power Consumption	Less than 180W
Dimensions (WxDxH)	1,384 x 660 x 1,214mm
Weight	120 kg

PRINTER SPECIFICATIONS

Controller Board	Embedded (GW Controller)
CPU	Celeron-M 1.0GHz
RAM	3GB
HDD	250GB
Print Speed	A0 SEF: (B/W) – 1.8ppm (Speed Priority Mode) (Colour) – 0.6ppm (Speed Priority Mode) A1 LEF: (B/W) – 3.2ppm (Speed Priority Mode) (Colour) – 1.1ppm (Speed Priority Mode)
Print Drivers	Adobe PostScript3, HDI
Supported Print Language	PostScript3, HP-GL, HP-GL2
Print Resolution	Speed Priority Mode: 600dpi x 300dpi Standard Mode: 600dpi x 600dpi Quality Priority Mode: 600dpi x 600dpi Quality Priority Mode for Coated Paper, Film (Matted) and Special Paper: 1200dpi x 1200dpi
Font	European 136 fonts (PS3)
Ink Save Mode	Yes, Save Ratio 50% (PS Driver)
Interface	Standard: Ethernet 100BASE-TX/ 10BASE-T, USB2.0 Optional: Wireless LAN (IEEE802.11a/b/g,) Gigabit Ethernet (1000BASE-T)
Network Protocol	TCP/IP (IP v4, IP v6), IPX/SPX
Standard MIB	MIB-II (RFC1213), Host Resource (RFC1514), Printer MIB (RFC1759)
Private MIB	Lanier Original
Network/Operating System	Windows: XP/Vista/Server2003/ Server2008/Server2008R2/7 or later Mac: OS 10.2 – 10.6 or later Citrix Presentation Server 4.5 (32bit/64bit) Citrix XenApp5.0 (32bit/64bit) Citrix XenApp6.0 (64bit)
Supported CAD version	AutoCAD2004/2005/2006/2007/2008/2009/2010/ 2011/2012
(HDI Driver)	Yes
One Direction	Yes
Media to Print	Yes (JPEG/TIFF/PDF)

(Print from USB/SD)	
Unauthorized Copy Prevention	Yes (PS driver)
WSD Printer	Yes
Colour Matching	Yes
POP	Yes
CUD	Yes

SCANNER SPECIFICATIONS

Colour Scan	Standard
Scanning Speed	B/W: 600dpi, 80mm/s Colour: 600dpi, 26.7mm/s
Scanning Resolution	Standard: 100 / 200 / 300 / 400 / 600 dpi Default: 200 dpi
Scan Detection	Auto detect, Preset size, Custom size
RGB Support	Standard
Network Interface	Standard: Ethernet 100BASE-TX/10BASE-T, USB2.0, USB Host, SD card slot Optional: Gigabit Ethernet (1000BASE-T), Wireless LAN (IEEE802.11a/b/g)
Protocol	Network: TCP/IP, Scan-to-Email: SMTP, Scan-to- Folder: SMB, FTP
Compression Method	B/W: TIFF (MH, MR, MMR), Grayscale Full Colour: JPEG (5 levels)
Scan Mode	B/W: Text/Line Art (Default), Text, Text/Photo, Grayscale Full Colour: Text/Photo, Photo
Image Density	Auto Density Selection effective only in B/W and Grayscale scan mode Manual: 7 levels (Effective in B&W/Grayscale and Full-Colour scan mode)
Image Rotation	Yes
SADF/Batch Mode	Yes
Mixed Size Mode	Yes

EXTERNAL OPTIONS

2nd Roll Unit	
Roll Paper Size	Maximum Width: 914mm Minimum Width: 279.4mm
Roll Paper Diameter	176mm
Dimensions (WxHxD)	1,108 x 398 x 432mm
Weight	14.5 kg
Roll Holder Unit	
Dimensions (WxHxD)	1,049 x 160 x 160mm
Weight	1.5 kg

CONSUMABLES*

Starter (Included):	
Print Cartridge Black	60ML
Print Cartridge Cyan	28ML
Print Cartridge Magenta	28ML
Print Cartridge Yellow	28ML
For Purchase:	
Print Cartridge Black	200ML
Print Cartridge Cyan	100ML
Print Cartridge Magenta	100ML
Print Cartridge Yellow	100ML
*For maximum performance and yield, we recommend using genuine Lanier parts and supplies.	

LANIER

Lanier (Australia) Pty Ltd HEAD OFFICE
854 Lorimer Street | Port Melbourne | Victoria 3207

SYDNEY Branch Office
Suite G2 Riverside Corporate Park |
2 Richardson Place | North Ryde NSW 2113

BRISBANE Branch Office
Unit 1/50 Borthwick Avenue | MURARRIE | QLD 4172

PERTH Branch Office
19 Collingwood Street | Osborne Park | WA 6017

ADELAIDE Branch Office
Unit 2, 8 Union Street | Stepney | SA 5069

Lanier Customer Care: 1300 362 345
www.lanier.com.au