

LANIER

Lanier MP4054SP MP5054SP MP6054SP

Digital B&W Multifunction
Printer

✓ Copier ✓ Printer ✓ Facsimile ✓ Scanner



Copy/Print
Speed

40 A4
Black & White
ppm

Copy/Print
Speed

50 A4
Black & White
ppm

Copy/Print
Speed

60 A4
Black & White
ppm

expand your business with customised convenience

Who says staying ahead of the competition is difficult? It's easy when you can give your customers the information they need - in multiple formats and multiple ways - quickly and securely. Perform everyday office tasks, including advanced printing, copying, faxing and colour scanning, from the versatile Lanier MP4054SP / MP5054SP / MP6054SP. Save time with one-touch preset shortcuts to frequently used document tasks. Worried about security? Set up user authentication so only authorised users can see and print jobs. You can even monitor user activity and energy consumption remotely, and make strategic changes to simplify work and reduce costs.

- Produce up to 60 black-and-white prints/copies per minute
- Envelope your ideas with standard envelope feeding from Tray 2, Bypass & Optional Trays
- Print or scan with your phone or tablet with the Ricoh Smart Device Print&Scan app
- Scan to searchable PDF's with the Optical Character Recognition (OCR) option
- Scan both sides of a sheet with a single pass at amazing 180 ppm
- Add the Internal Stapling Finisher without increasing footprint
- Minimise operating costs with energy-saving efficiency
- Print on up to 300 g/m², duplex up to 256 g/m²



move from job to job effortlessly fully featured with advanced tools to make your workday easier

Perform more types of tasks

Information drives business. You rely on it to make smarter decisions. But what happens when you need to share it with others? How quickly can you get it to them? And is it in the format - either paper or digital - that they prefer? Whether you're printing, copying, scanning or faxing, the compact and affordable Lanier MP4054SP / MP5054SP / MP6054SP helps you produce and share information quickly and securely. Take advantage of intuitive one-touch controls, and move on to the next task - whatever it turns out to be - with ease.

Share information faster

Take too much time on one job, and the next one may not get done. Fortunately, you can easily transition between jobs with the Lanier MP4054SP / MP4054SP / MP6054SP. Recovery time from sleep mode is less than 5 seconds, so you don't have to stand around waiting when you need to send documents quickly. Print up to 60 monochrome pages per minute on a wide range of media and handle almost any job. You can also scan up to 180 colour or monochrome images per minute with minimal manual intervention using the 220-sheet Single Pass Document Feeder (SPDF).

Finish with style

With a total of five finisher options, you can make sure your ideas will be presented in the most professional manner with minimum work. Add one of the two booklet finishers to easily create flat fold booklets as they are equipped with two sets of rollers that will fold booklets twice, saving you time that would otherwise be spent on manual folding. You can also opt for the 1,000- or 3,000-sheet finisher for a professional touch or even add the 500-sheet internal stapling finisher* without increasing the machine's footprint. Plus, every finisher features optional punching kits to suit your most advanced finishing needs.

*Internal Finisher is not compatible with MP6054SP

Access everything you need with ease

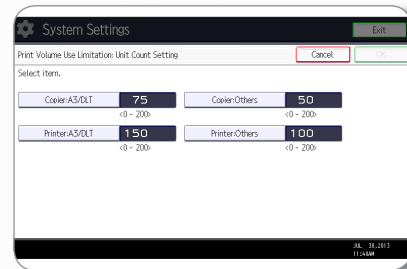
With an abundance of projects and people waiting, you don't have time for delays. Not even for misfeeds. Simply follow the animated LED guide that highlights the source of the problem and you'll be up and running in moments. Spending too much time searching for paper and re-loading trays? Add optional paper trays to increase paper capacity up to 4,700 sheets for longer, uninterrupted runs. You can even print on thicker stocks up to A3 without missing a beat.



keep productivity high in any network environment

Manage and boost workgroup output

Take advantage of the powerful 533 Mhz processor, 2 GB RAM and 320 GB Hard Drive to run multiple jobs from multiple users simultaneously, without interruption. You can set quotas or limit output for specific users to encourage faster, more responsible printing. You can also print directly from your PC or USB without a print driver, so you won't have to worry about waiting for updates when a deadline approaches. When you do print using the print driver, take advantage of the icon-driven, one-click preset PCL6 user interface to print crisp output up to 1200 dpi in fewer steps and less time.



Customise workflows to simplify how you work

You know what you need to work faster. So why not customise the Lanier MP4054SP / MP5054SP / MP6054SP to meet your specific needs? Personalise the Home Screen with icons to access frequently used tasks with a single touch. Use embedded software like optional GlobalScan™ NX to transform paper documents into digital form for faster delivery to more people in more places. Add other third-party vendor solutions to simplify content management and other business-critical tasks so you can work with fewer manual touch-points and minimise errors.



Print from or Scan to your phone or tablet

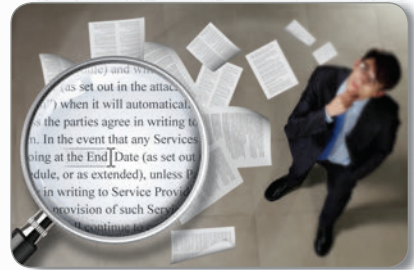
Available for both Apple and Android devices, the free Ricoh Smart Device Print&Scan features advanced printing settings at your fingertips. Just join your mobile device to the same network as the MP4054SP /MP5054SP / MP6054SP and choose from settings you would normally see on a computer driver, such as paper size, orientation, duplexing, input tray and even stapling and password-protected printing. You can also scan straight to your mobile device and see the image popping up on your device's screen in just a few seconds. And with cloud integration, you can not only instantly upload your scan to your Dropbox or Google Drive accounts, but also retrieve documents from these services for printing, with a wide range of file formats supported.



we've made it easy to take control

Search scanned files with embedded OCR text

Lanier continues to automate how you capture, retrieve and send data to simplify everyday tasks. The optional embedded OCR (Optical Character Recognition) scanning adds a transparent layer of text over the output PDF allowing you to retrieve documents by searching on your computer for specific words inside the PDF contents instead of guessing on the actual name of the file. The OCR unit also lets you auto remove blank pages while scanning.



Scan and share the way you want to

Share information faster and more economically. Whether images are in black-and-white or colour, or in PDF, TIFF or JPEG formats, you can get them to the right place via Scan-to-File/Folder/URL/FTP/Email. Compress the size of highly complex, graphics-intensive files and send them just as easily without compromising quality. You can also make scanning easier across your organisation with Distributed Scan Management (DSM). Use it to automate document tasks and to set user permissions, rules, delivery preferences and more to simplify how you manage information.



Send faxes more ways, more places

There are times when you can't take any chances. You need assurance that a client or coworker received the document you sent them. Add optional faxing capabilities and send or receive faxes electronically. Choose the method that works best for you, whether it's Internet Faxing, LAN faxing or over IP for faster delivery via Super G3 faxing. Using another connected device that doesn't have a fax board? No problem. Just send it through the Lanier MP4054SP / MP4054SP / MP6054SP for Remote Faxing and reduce phone line costs and the need for additional fax boards.



help meet today's business challenges with smart, secure multifunction performance

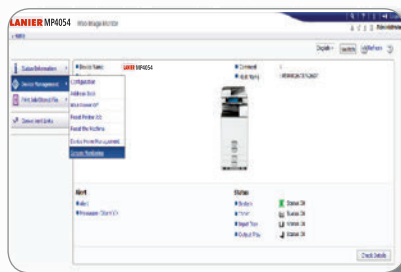
Protect your documents, and yourself

Every business takes risks daily. Some of them are avoidable. Prevent unauthorised access to documents with advanced user authentication. Documents are stored at the device until an authorised ID card is swiped using the optional card reader or a passcode is entered at the MFP to release them. For added protection, you can use encrypted PDF transmission to scramble data on confidential PDFs or add watermarks to confidential documents that will appear when unauthorised users attempt to copy them. Even your data on the hard drive is protected by Lanier's DataOverwriteSecurity System (DOSS) to thwart hackers.



Manage and monitor remotely

With the Lanier MP4054SP / MP4054SP / MP6054SP, you can see how terms like "efficiency" and "productivity" can fit into your workday. Use the intuitive administration controls to automate meter reads, access system settings, streamline firmware updates and more, right from the desktop. Get alerts when supplies are low or maintenance is needed. Monitor usage for specific users or workgroups. And, configure your entire fleet remotely from the easy-to-use, Web browser-based operation panel.



Minimise energy consumption and cost

You wouldn't accept an MFP that stopped being productive once you began using it. So why settle for one that stops being affordable? Choose the Lanier MP4054SP / MP5054SP / MP6054SP for low cost-per-page and typical electricity consumption (TEC) values to help support your budgetary needs and sustainability goals. You can program the device to power on or off during specified times to conserve energy for even greater savings. Plus, the device meets EPEAT® Gold criteria - a global environmental rating system for electronic products - and is compliant with ENERGY STAR® v2.0 requirements.



streamline document management tasks in small offices and workgroups



Lanier MP4054SP shown with optional BN3110 One-Bin Tray, PB3230 Tandem Paper Feed Unit, RT3030 1,500-Sheet Side Large Capacity Tray, Bridge Unit and 3,000-Sheet SR3160 Finisher

- 1 Navigate from job to job easily via the standard, full-colour, 9"(23 cm) tiltable LCD control panel featuring a USB & SD card slots and a customisable home screen to link to commonly performed jobs
- 2 Use the 220-sheet Single Pass Document Feeder (SPDF) to efficiently handle one- and two-sided originals for copying, faxing and colour scanning
- 3 The MP4054SP / MP5054SP / MP6054SP comes standard with 2 x 550-sheet paper trays for longer, uninterrupted runs
- 4 A standard 100-Sheet Bypass Tray accommodates a wide range of paper sizes and types, including banner printing
- 5 Use the optional 2 x 1,000-Sheet Tandem Paper Trays (shown) for multiple paper sources on demand. Other options include a 1 x 550-Sheet Paper Tray, 2 x 550-Sheet Paper Trays, 1,500-Sheet Side Large Capacity Tray (shown) and Console
- 6 Produce professional documents and minimise outsourcing. The optional 3,000-Sheet Booklet Finisher (shown) provides three destinations for output, and can be used to produce paginated, saddle-stitched, punched and folded booklets. Design your own complete document production solution with other optional finishers including a 1,000-Sheet Booklet Finisher, 2,000-Sheet Booklet Finisher, 1,000-Sheet Finisher and 500-Sheet Internal Finisher*.
- 7 The optional 125-Sheet One-Bin Tray (shown) and 250-Sheet Internal Shift-Sort Tray can separate output and simplify document retrieval

* Internal Finisher is incompatible with MP6054SP

Main Specifications

GENERAL

Warm-up time:	14.0 seconds
First output speed:	4.0/2.9/2.9 seconds
Continuous output speed:	40/50/60 pages per minute
Memory:	2 GB (Maximum)
HDD:	320 GB
Dimensions (W x D x H):	587 x 680 x 963 (with SPDF)
Weight:	74 kg (with SPDF), 60 kg (without SPDF)
Power source:	220 - 240 V, 50/60 Hz

COPIER

Copying process:	Laser beam scanning & electro photographic printing
Multiple copying:	Up to 999 copies
Resolution:	600 dpi
Zoom:	From 25% to 400% in 1% step

PRINTER

Printer language:	Standard: PCL5e, PCL6, Adobe® PDF Direct Option: Adobe® PostScript® 3™, IPDS, XPS
Print resolution:	1,200 x 1,200 dpi
Interface:	Standard: USB 2.0, SD slot, Ethernet 10 base-T/100 Base-TX, Ethernet 1000 Base-T Option: Bi-directional IEEE 1284/ECP, Wireless LAN (IEEE 802.11a/b/g/n), Bluetooth
Network protocol:	TCP/IP (IP v4, IP v6), IPX/SPX (Option) Windows® environments: Windows® XP, Windows® Vista, Windows® 7, Windows® 8, Windows® Server 2003, Windows® Server 2008, Windows® Server 2008R2, Windows® Server 2012 Mac OS environments: Macintosh OS X v10.5.6 or later UNIX environments: UNIX Sun® Solaris: 2.9, 2.10 HP-UX: 11.x, 11i v2, 11i v3 SCO OpenServer: 5.0.7, 6.0 RedHat® Linux Enterprise: v4, v5, v6 IBM® AIX: v5L, v5.3, v6.1, v7.1 Novell® Netware® environments: v6.5 or later (Optional) SAP® R/3® environments: SAP® R/3®

SCANNER

Scanning speed:	SPDF*: (FC/ B&W) Max. 180 ppm duplex, 110 ppm simplex
Resolution:	600 dpi, 1200 dpi (TWAIN)
File Format:	TIFF, JPEG, PDF, Encryption PDF, High Compression PDF, PDF-A, Network TWAIN
Bundled drivers:	Network TWAIN
Scan to:	E-mail, Folder, USB/SD, NCP (Optional)

*SPDF is standard on MP6054SP

FAX (OPTION)

Circuit:	PSTN, PBX
Compatibility:	ITU-T (CCITT) G3
Resolution:	8 x 3.85 line/mm, 200 x 100 dpi 8 x 7.7 line/mm, 200 x 200 dpi 8 x 15.4 line/mm, 16x 15.4 line/mm 400 x 400 dpi (Optional)
Transmission speed:	G3: Approx. 3 second(s) (200 x 100 dpi, JBIG) Approx. 2 second(s) (200 x 100 dpi)
Modem speed:	Maximum: 33.6 Kbps
Memory capacity:	Standard: 4 MB Maximum: 60 MB

PAPER HANDLING

Recommended paper size:	A3, A4, A5, A6, B4, B5, B6
Paper input capacity:	Standard: 1,150 sheets Maximum: 4,700 sheets
Paper output capacity:	Standard: 500 sheets Maximum: 3,625 sheets
Paper weight:	Standard paper tray(s): 60 - 300 g/m ² Bypass tray: 52 - 300 g/m ²
Duplex unit:	52 - 256 g/m ²

ECOLOGY

Power consumption:	Maximum: 1,780 W Ready mode: 81.4 W Sleep mode: 0.51 W TEC (Typical Electricity Consumption): MP4054SP: 1,607 W/h MP5054SP: 2,253 W/h MP6054SP: 2,719 W/h
--------------------	---

SOFTWARE (OPTION)

GlobalScan NX, Device Manager NX, Enhanced Locked Printed NX, Streamline NX, Card Authentication Package

OPTIONS

ADF handle, SPDF (standard on MP6054SP), 1 x 550-sheet paper tray, 2 x 550-sheet paper tray, Tandem LCIT, Caster table, Side LCIT, One-bin tray, 1,000-sheets finisher, 1,000-sheets booklet finisher, 3,000-sheets finisher, 2,000-sheets booklet finisher, Internal finisher (except MP6054SP), Shift tray, Side Tray, Bridge unit, Punch kits for finisher, Netware, File format converter, Adobe® PostScript® 3™ option, IPDS, XPS print option, Copy data security unit, Wireless LAN (IEEE 802.11a/b/g/n), IEEE 1284, Bluetooth, Counter interface, Smart card reader cover, OCR unit, Fax option, G3 interface unit, Fax connection unit, Fax memory, Console

For availability of models, options and software, please consult your local Lanier supplier.

LANIER

Lanier (Australia) Pty Ltd HEAD OFFICE
854 Lorimer Street | Port Melbourne | Victoria 3207

SYDNEY Branch Office
Suite G2 Riverside Corporate Park |
2 Richardson Place | North Ryde NSW 2113

BRISBANE Branch Office
Unit 1/50 Borthwick Avenue | MURARRIE | QLD 4172

PERTH Branch Office
19 Collingwood Street | Osborne Park | WA 6017

ADELAIDE Branch Office
Unit 2, 8 Union Street | Stepney | SA 5069

Lanier Customer Care: 1300 362 345
www.lanier.com.au