

# LANIER

## Lanier MPC2003SP MPC2503SP

A3 Colour Multifunction Printer

✔ Copier ✔ Printer ✔ Fax ✔ Scanner



MPC2003SP

20  
B/W  
Colour  
ppm

MPC2503SP

25  
B/W  
Colour  
ppm

# increase your productivity & lower your environmental impact

Allow a fresh blast of productivity to sweep through your office with Lanier's new-generation flagship A3 colour MFP. Increase your workflow with features such as internal finisher, stapleless stapler and mobile printing. Save time with its short warm-up, fast first print speeds, ID Card Copy and Searchable PDF. At the same time, reduce your environmental impact through a low power consumption, quota setting and adjustable power on/off settings. In short, the MPC2003SP/ MPC2503SP will meet all your digital workflow needs and help you become more productive, day in, day out, in an environmentally responsible manner.

- Short warm-up time and fast first print speed
- Innovative optional touch and swipe operation panel
- Advanced controller for powerful performance
- Supreme image quality
- Unique stapleless stapler



\* Machine featured with optional touch and swipe smart operation panel



### **Boost your productivity**

The MPC2003SP/MPC2503SP are designed to streamline your workflow and increase your efficiency via performance and easy usability. You'll find yourself becoming much more productive while producing professional document output that you never thought possible.

### **Reduce your environmental impact**

The Lanier philosophy is to provide the highest performance with the lowest environmental impact. The MPC2003SP/MPC2503SP are supreme examples of this approach. Power consumption during operation is lowest in class. Sleep mode saves even more energy. The use of toner and paper is efficiently managed to save resources. Recycled and bioplastic components are used wherever possible.

## attractive & easy to use

### Easy operation; just touch & swipe

These devices take ease of use to another level. Their optional touch and swipe panel is similar to iPad and Android devices to make operation simpler and faster. Operation is the same as other Lanier MFPs, which reduces training needs for fleet customers. Save time by presetting frequently used settings on the home page.



### A perfect match for the modern office

Slim and stylish, these attractively designed multifunctionals will enhance the appearance of any office without taking up too much valuable space. They are also extremely quiet. Cleverly designed housings reduce the noise of moving parts. Fans stop operating during sleep mode. And after waking up from sleep mode, parts that don't have to move - don't!



### The versatility you're looking for

These MFPs support the increasingly popular SRA3 format, so you can print crop marks for easy and efficient proofing. During simplex operation the devices take paper of weights up to 300 g/m<sup>2</sup> (duplex = 169 g/m<sup>2</sup>). Printing on envelopes is easy with a standard envelope feeder available from the second tray.



# advanced functionality to enhance your digital workflow

## Save time searching and faxing

Cut out unnecessary and frustrating time spent looking for documents by using the Searchable PDF function. You can even search for a document by inputting a single specific word that appears in the text. Fax remotely with the built-in powerful remote fax.



## Ultra-convenient

Print from USB/SD, or make full use of the Smart Card Reader Cover. Simultaneously copy both sides of an ID card onto one side of paper with ID Card Copy.



## An innovative way to staple

Lanier's unique stapleless stapler allows you to bind up to five pages without using a staple. You save on resources, no need to remove staples when shredding documents, and no risk of staples scratching the glass platen when a document is scanned. This option will be of great benefit to the food processing industry (no risk of staples in food) as well as to hospitals and schools (no risk of injury to patients and children).



## Finish off in style

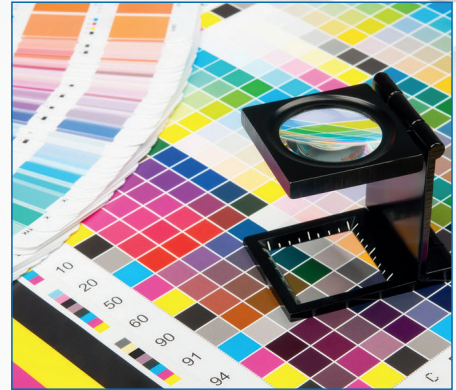
Create stunning, professional documents with the internal finisher. Increase total capacity by attaching a 1-bin tray to the top of the finisher, without increasing the unit's footprint.



## high in performance, low in environmental impact

### Outstanding image clarity

Real-time process control stabilises image colour density to produce breathtaking image quality. Vibrations are ruled out, preventing banding and making images look perfectly smooth. Text sharpness is high and the risk of halo formation is low. Colours can be easily adjusted; 'before' and 'after' pictures enable you to easily fine-tune images for optimal results.



### Highly efficient

Increase your work rate and efficiency by making use of Lanier's GWNX controller features such as remote fax, print from USB/SD, quota setting, a customisable home page and an information screen. Distributed Scan Management allows scanning conditions and destination to be set automatically -again saving time and improving efficiency.

### Easy to maintain

Real-time jam animation speeds up troubleshooting, while an innovative mechanism ensures smooth paper loading.

### The environmentally responsible MFP

TEC values of these devices are among the lowest in the sector. Power consumption during sleep mode is also an industry low. At a glance you can see how much paper you have saved via animated indicators on the operating panel. Adjust the power on/off setting so that the device is ready to start working the minute you come in – and goes to sleep as soon as you clock off. The use of bio-plastics and electric furnace steel reduces the ecological footprint of these devices.



# your digital workflow solution



- 1** Smart touch and swipe operation panel
- 2** Internal Finisher
- 3** Easy access for maintenance
- 4** Envelope feeding from second paper tray
- 5** Bioplastic and electric furnace steel parts

- 6** Bypass Tray
- 7** Automatic Reversing Document Feeder
- 8** Standard 2 x 550-Sheet Trays
- 9** 2 x 550-Sheet Trays

# Main Specifications

## GENERAL

Warm-up time:	19 seconds
First output speed:	Full colour: 7.6/7.5 seconds B/W: 5.4/5.3 seconds
Continuous output speed:	Full colour: 20/25 pages per minute B/W: 20/25 pages per minute
Memory:	Standard: 1.5 GB Maximum: 2.0 GB HDD: 250 GB
Dimensions (W x D x H):	587 x 685 x 913 mm
Weight:	81 kg
Power source:	220 - 240 V, 50/60 Hz

## COPIER

Copying process:	Dry electrostatic transfer system Multiple copying: Up to 999 copies
Resolution:	600 dpi
Zoom:	From 25% to 400% in 1% steps

## PRINTER

Printer language:	Standard: PCL5c, PCL6, PDF direct print, Mediaprint (JPEG/TIFF) Option: Adobe® PostScript® 3™, PictBridge
Print resolution:	Maximum (1,200 x 1,200 dpi)
Interface:	Standard: USB 2.0, SD slot, Ethernet 10 base-T/100 base-TX, Gigabit Ethernet, Ethernet 1000 Base-T Option: Bi-directional IEEE 1284, Wireless LAN (IEEE 802.11a/b/g/n), Bluetooth
Network protocol:	Standard (TCP/IP), Option (IPX/SPX) Windows® environments: Windows® XP, Windows® Vista, Windows® 7, Windows® Server 2003, Windows® Server 2003R2, Windows® Server 2008, Windows® Server 2008R2, Windows® Server 2012
Mac OS environments:	Macintosh OS X Native v10.5 or later
UNIX environments:	UNIX Sun® Solaris HP-UX SCO OpenServer RedHat® Linux Enterprise IBM® AIX
Novell® Netware® environments:	v6.5 or later
SAP® R/3® environments:	SAP® R/3®

## SCANNER

Scanning speed:	Maximum 54 originals per minute
Resolution:	Maximum: 1,200 dpi Original size: A3, A4, A5, B4, B5 Bundled drivers: Network TWAIN E-mail (SMTP, POP, IMAP4), Folder (SMB, FTP, NCP)
Scan to:	

## FAX

Circuit:	PSTN, PBX Compatibility: ITU-T (CCITT) G3
Resolution:	8 x 3.85 line/mm, 200 x 100 dpi
Transmission speed:	G3: 2 second(s)
Modem speed:	Maximum: 33.6 Kbps
Memory capacity:	Standard: 4 MB
Maximum:	28 MB

## PAPER HANDLING

Recommended paper size:	Standard (A3, A4, A5, A6, B4, B5, B6), Option (SRA3)
Maximum:	2,300 sheets
Paper output capacity:	Maximum: 625 sheets
Paper weight:	52 - 300 g/m <sup>2</sup> Duplex 52 -169 g/m <sup>2</sup>

## ECOLOGY

Power consumption:	Maximum: 1,470 W
Ready mode:	240 W Sleep mode: 1 W TEC (Typical Electricity Consumption): 701/889W/h

## SOFTWARE

Standard:	SmartDeviceMonitor, Web SmartDeviceMonitor®, Web Image Monitor GlobalScan NX, Card Authentication Package, Unicode Font Package for SAP, Remote Communication Gate S Pro
Optional:	

## OPTIONS

Platen cover, 2 x 550-sheet paper tray, 500-sheet finisher, Internal finisher with stapleless stapler, Punch kit for 500-sheet finisher, Internal shift tray, One-bin tray, Bi-directional IEEE 1284, Wireless LAN (IEEE 802.11a/b/g/n), Bluetooth, Netware, Pictbridge, PostScript3, Browser unit, File format converter, Card reader bracket, Copy Data Security Unit, Fax Connection Unit., Fax option, Unicode Font Package for SAP, OCR Unit, Smart Card Reader Cover, SRA3 unit, Smart Operation Panel

For availability of models, options and software, please consult your local Lanier supplier.

ISO9001 certified, ISO14001 certified, ISO27001 certified

All brand and/or product names are trademarks of their respective owners.

Specifications and external appearance are subject to change without notice. The colour of the actual product may vary from the colour shown in the brochure. The images in this brochure are not real photographs and slight differences in detail might appear.

Copyright © 2013 Lanier (Australia) Pty. All rights reserved. This brochure, its contents and/or layout may not be modified and/or adapted, copied in part or in whole and/ or incorporated into other works without the prior written permission of Lanier (Australia) Pty.

# LANIER

Lanier (Australia) Pty Ltd HEAD OFFICE  
854 Lorimer Street | Port Melbourne | Victoria 3207

SYDNEY Branch Office  
Suite G2 Riverside Corporate Park |  
2 Richardson Place | North Ryde NSW 2113

BRISBANE Branch Office  
Unit 1/50 Borthwick Avenue | MURARRIE | QLD 4172

PERTH Branch Office  
19 Collingwood Street | Osborne Park | WA 6017

ADELAIDE Branch Office  
Unit 2, 8 Union Street | Stepney | SA 5069

**Lanier Customer Care: 1300 362 345**  
[www.lanier.com.au](http://www.lanier.com.au)