

LANIER



MP W5100/ MP W7140

Fast wide-format multifunctionals
for peak performance

Your ideal wide-format partner

You know what you want from a wide-format printer. It must process your workflow fast and at an attractive cost. The Lanier MP W7140 does more. It attains excellent quality when printing and scanning, and boasts a colour scanner as standard. The design combines space-saving measures with the reliability and durability essential to you. Maximum uptime and business continuity are guaranteed.

- Excellent productivity: 7 A0 and 14 A1 ppm (MP W7140); 5 A0 and 10 A1 ppm (MP W5100).
- Uniquely compact design with a single footprint.
- Monochrome printing at 600 dpi and standard colour scanning.
- Flexible workflow solutions: choice of two controllers.
- Copy, print and scan documents up to 30 meters long (MP W7140 only).
- Attractive Total Cost of Ownership (TCO).



LANIER

Lanier: wide-format pioneer

In the 1980s, Lanier was the first company to market a digital and plain-paper wide-format device. Since then, we have developed an impressive range of wide-format products. We are proud to offer you the MP W5100/MP W7140 as the latest fruits of our constant innovation.

Upgrading & customising

The MP W7140 is versatile and adaptable to your needs. Add two 250-sheet paper cassettes or an extra two-roll feeder to increase its paper capacity. Two different controllers meet your specific print and scan requirements. Lanier's embedded controller supports all the MP W7140's functionalities. Job building, queue management and printing genuine AutoCAD® formats are among the many benefits of the external controller.

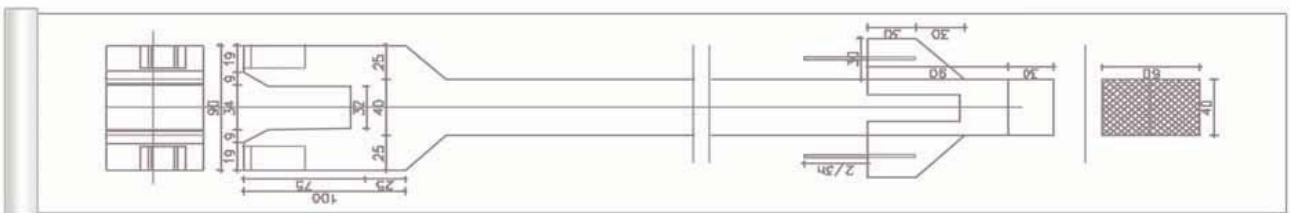
A smaller-scale alternative

You want to enjoy the compactness and many functions of the MP W7140, but for smaller volumes? Lanier proposes the MP W5100 as an attractive alternative.

- Copying/printing/scanning at 5 A0 and 10 A1 sheets per minute.
- Standard colour scanner and colour LCD display.
- Cost-efficient internal controller, or external controller with rich feature set.
- Large paper capacity.
- Easy operation.

We think green. Do you?

Like all Lanier products, the MP W5100/MP W7140 reflect our commitment to the environment. Their ozone, noise and heat emission levels are minimal and their footprint is small. Compact and quiet, these wide-format solutions can be placed in your drawing office or any other working area.



Up to 30 meters long.



We think green. Do you?

LANIER

Continuous efficiency



Top class productivity

The new MP W7140 copies and prints your documents at a high pace.

- Seven A0, fourteen A1 sheets per minute.
- Documents of up to 30 meters can be scanned, printed or copied.
- Warm-up time: less than two minutes.
- First output speed (A1): less than 9 seconds.

Broad paper handling

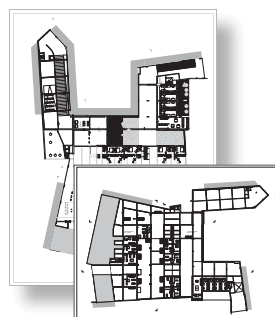
Paper formats between 182 x 210 mm and 914 x 30,000 mm pose no challenge to the MP W7140. With two standard roll feeders, refills are far between. Do you require even more paper capacity? Opt for an extra two roll feeders or 2 x 250-sheet paper cassette. Equipped with four rolls, the MP W7140 will hold all paper sizes you need at once. Your benefit: no need to change rolls for a job on a different size of paper.

Your reliable partner

Reliable equipment is the first requirement for business efficiency. Robustness and long durability are the MP W7140's trademarks. The device is continually productive thanks to its impressive paper capacity and easy troubleshooting.

Effortless job management

Increase your print efficiency. Browse folders and check the contents of files on the display. Management tasks like changing the queue, holding and deleting jobs also happen via the touch panel. Web Image Monitor carries out similar functions from your desktop computer. Its interface has been designed for optimum usability.



7 A0 sheets per minute, 14 A1 sheets per minute.

Made-to-measure quality



Excellent image quality

Lanier's top technology and a print resolution of 600 dpi guarantee impeccable image quality. The MP W7140 reproduces the finest lines without fail.

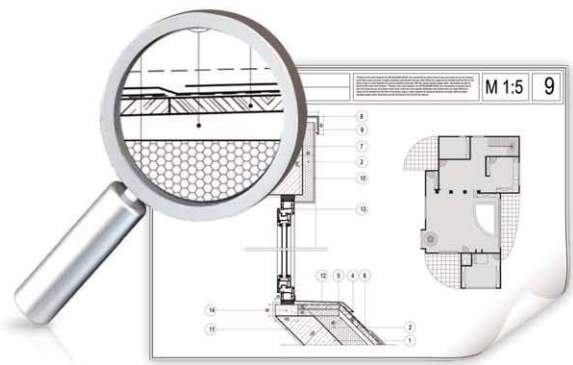
Embedded controller

Your wide-format workflow mainly consists of standard formats like HP-GL, PDF or TIFF. The MP W7140's embedded controller is just what you need. Affordable and with standard PostScript® support, it offers the same workflow as other Lanier devices. This solution fully supports all your device's functionalities.

External controller

Running a central print department or commercial print shop, you require your wide-format printer to be fully flexible. The MP W7140's external controller option offers

- Job queue management: change print order to give urgent jobs priority.
- Advanced image editing tools: despeckle and deskew, save old documents as new (colour and B/W).
- Auto-recognition of B/W and colour in documents: send files automatically to the appropriate printer.
- Support of genuine AutoCAD® formats like DWG, DXF, and even CGM and VIC (optional).



Excellent image quality.



LANIER

Sophisticate your digital wide-format workflow

Digitising your drawings has many advantages. It saves legacy documents for the future. It streamlines your workflow and speeds up the job turnaround. Capture, store and distribute documents efficiently with the Lanier MP W7140.

Standard colour scanning

All your drawings, whether colour or B/W, can be scanned, revised and stored using the Lanier MP W7140's state-of-the-art scanner. Digitise colour documents without extra cost. Scanning to e-mail or to URL in one click saves precious time and minimises network traffic.* Editing, too, can be done without losing time. Choose the embedded or the external controller depending on your specific needs.

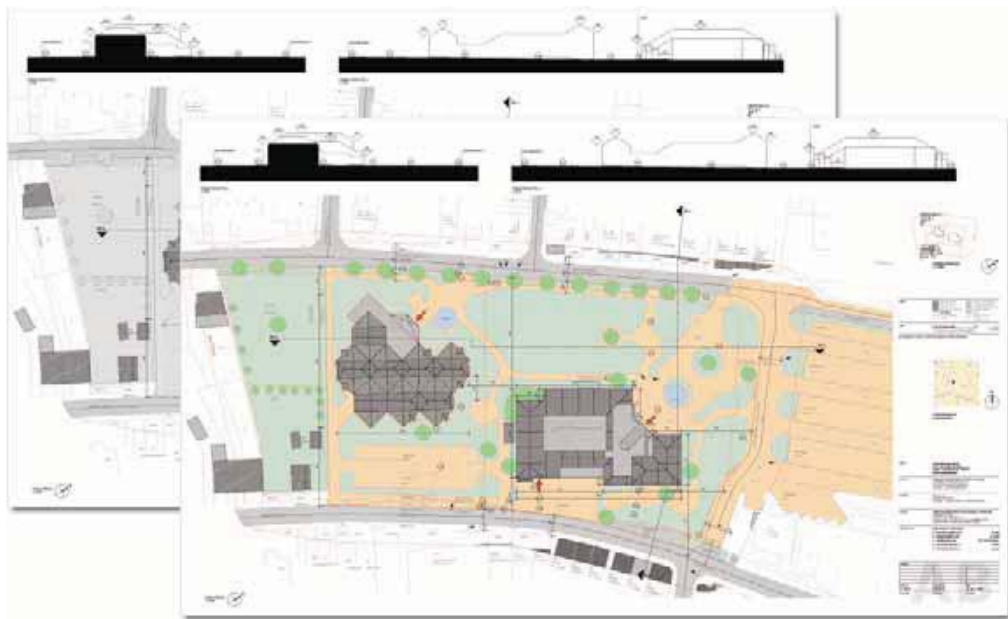
*Requires 1 GB extra memory (optional).

Safe and secure

When circulating digital data, it is vital to keep them from prying eyes.

The Lanier MP W7140 lives up to the latest security standards.

- S/MIME protects your e-mailed data.
- Information on the machines' hard drive can be encrypted.
- User authentication by password averts unauthorised use of your device.
- The Data Overwrite Security system prevents access to or reconstruction of confidential information.



Colour scanning & B/W printing



User authentication by password

LANIER

Simple solutions to complex demands

Lanier's engineers know how precious your time is. That is why they have done their best to save you hassle. The new MP W7140 proves that sophistication can be user-friendly. Its many advanced features are easy to access; complex print jobs suddenly become simple.

Smooth operation

Operating the MP W7140 is straightforward with the wide colour LCD touch screen. This panel has a simplified screen function as an extra convenience when you need basic commands only. Operators do not need extensive training to work with the MP W7140. Printing and scanning can be done at the same time. The removable scanner option* separates printer and scan unit, allowing several people to perform tasks at the machine simultaneously.

*MP W7140 only.

Continuous running

Daily tasks have never been easier. With Lanier's unique roll holders, anyone can change (heavy) paper rolls quickly and easily. They are always centred without hassle. The paper trays have a unique flexibility for paper width and adapt to the roll format. They accept each roll size, from 210 to 914 mm in width. In case of a jam, the display shows instructions for paper removal. The MP W7140 is always up and running.



Wide colour LCD touch screen.

MP W5100/MP W7140

SPECIFICATIONS

COPIER

Copying process:	Electro-photographic printing	
Copy speed:	MP W5100:	5/10 copies per minute (A0/A1)
	MP W7140:	7/14 copies per minute (A0/A1)
Resolution:	600 dpi	
Multiple copy:	Up to 99 (ten key input)	
Warm-up time:	Less than 120 seconds	
First output speed:	9 seconds (A1, Roll feeder)	
Reduction/enlargement:	4R/4E	
Zoom:	25 - 400% (in 0.1% steps)	
	Memory:	Standard: 1 GB + 2 x 160 GB Hard Disk Drive Optional: 1 GB
Paper input capacity:	Standard:	1-sheet bypass tray 2 roll feeder 2 roll feeder
	Optional:	2 x 250-sheet paper cassette
Paper output capacity:	Front:	99 sheets A1 (plain paper) 10 sheets A1 (application paper)
	Rear:	10 sheets A0 (plain paper) 1 sheet A0 (application paper) 1 sheet (film)
Paper size:	Minimum:	210 x 210 mm
	Maximum:	MP W5100: 914 x 15,000 mm MP W7140: 914 x 30,000 mm
Paper weight:	52 - 110 g/m ²	
Dimensions (W x D x H):	1,250 x 755 x 1,200 mm	
Weight:	230 kg	
Power source:	220 - 240 V, 50/60 Hz	
Power consumption:	Maximum 3 kW	

EXTERNAL PRINTER RW-7140 (option)

Controller type:	External (RATIO controller - Server PC type soft RIP controller)	
Print speed:	MP W5100:	5/10 prints per minute (A0/A1)
	MP W7140:	7/14 prints per minute (A0/A1)
Print resolution:	600 dpi	
Print size:	Minimum:	210 x 210 mm
	Maximum:	MP W5100: 914 x 15,000 mm MP W7140: 914 x 30,000 mm
Network protocol:	TCP/IP, IPX/SPX, lpr/lpq, HTML, SMB (as of Windows [®] 2000), EtherTalk	
Supported file formats:	Standard:	HPGL, HPGL2, HP/RTL, TIFF Calcomp 906/907, WMF, BMP CALs (1 & 2), CIT, PCX, JPEG, PNG
	Option:	Adobe [®] PostScript [®] 3™, CGM DWG, DXF, DWF, VIC
Supported environments:	Windows [®] 2000/XP/Server 2003/Vista™ UNIX Sun [®] Solaris 2.6/7/8 HP-UX 10.x/11.x SCO OpenServer 5.x (up to 5.0.6) Redhat [®] Linux 6.x/7.1 Macintosh 10.2 - 10.5	
	Recommended PC:	Please contact your supplier for the latest recommended list.

SCANNER RW-7140 (option for PRINTER RW-7140)

Scan speed:	MP W5100:	Maximum 10 originals per minute (A1)
	MP W7140:	Maximum 14 originals per minute (A1)
Resolution:	Scan to e-mail/folder: 150, 200, 300, 400, 600 dpi	
Original size:	Maximum 914 x 30,000 mm (MP W7140)	
Output formats:	Standard:	PDF/TIFF/JPEG

EMBEDDED PRINTER Type W7140 (option)

Controller type:	Embedded	
Print speed:	MP W5100:	5/10 prints per minute (A0/A1)
	MP W7140:	7/14 prints per minute (A0/A1)
Printer resolution:	Maximum:	600 dpi
Print size:	Minimum:	210 x 257 mm
	Maximum:	MP W5100: 914 x 15,000 mm MP W7140: 914 x 30,000 mm
Network protocol:	TCP/IP (IPv4, IPv6), IPX/SPX, AppleTalk	
Supported file formats:	HPGL, HPGL2 (HPRTL), TIFF (CALs), Adobe [®] PostScript [®] 3™, RPCS™	
Supported environments:	Windows [®] 95/98/Me/2000/XP/Server 2003/Vista™ Macintosh 8.6 or later (OS X Classic) Macintosh v10.1 or later (native mode)	
Interface:	Standard:	Ethernet 10 base-T/100 base-TX/USB 2.0
	Option:	Wireless LAN (IEEE 802.11b) 1000 base-T Gigabit Ethernet

SOFTWARE/DRIVERS

RW-7140 PLOTBASE, RW-7140 PLOTCLIENT/WIN, RW-7140 WINPRINT, RW-7140 PLOTCLIENT HDI, RW-7140 PLOTCLIENT/WEB, RW-7140 PLOTCLIENT/MAC, RW-7140 SCANTOOL

OTHER OPTIONS

2 roll feeder, 2 x 250-sheet paper cassette (up to A2), Originals tray, Originals hanger, Roll holder, Multi-stacker, Double stacker, Rear stacker, Scanner separation unit (MP W7140 only), 1 GB memory card, Gigabit Ethernet, Wireless LAN IEEE 802.11b, Browser unit, VM card, HDD encryption unit, Data Overwrite Security Unit

For further details and availability of models, optional apparatus and software, please consult your local Lanier supplier.

SCANNER Type W7140 (option)

Scan speed:	42.5 - 340 mm per second	
Resolution:	600 dpi (TWAIN: 150 - 1,200 dpi)	
Original size:	Maximum:	914 x 30,000 mm (MP W7140)
Output formats:	PDF/TIFF	
Bundled drivers:	Network TWAIN	
Scan to e-mail:	SMTP, TCP/IP	
Scan to e-mail destination addresses:	Maximum 100 per job	
Stored destination addresses:	Maximum 150	
Address book:	Via LDAP or locally on Hard Disk Drive	
Scan to folder:	Via SMB, FTP or NCP protocol	
Scan to PDF:	Standard	



LANIER

Melbourne Sydney Brisbane Perth

Visit us at www.lanier.com.au

TELEPHONE

1300 362 345

FOR THE COST OF A LOCAL CALL FROM ANYWHERE IN AUSTRALIA

FACSIMILE

1300 363 181