

LANIER

Lanier MP2001SP

Multifunction B&W

☑ Copier ☑ Printer ☑ Facsimile ☑ Scanner



MP2001SP

20
ppm monochrome

Innovation, value and versatility in one integrated design

Choose the Lanier MP2001SP for fast, dependable and affordable multifunction performance to streamline document-related workflow and lower your total cost of ownership. This space-saving and innovative MFP combines quality printing and copying on media up to A3, easy-to-use scanning capabilities, optional faxing and advanced security features. For small offices, use it as your primary system, or deploy it as an integral part of a Lanier Managed Document Services (MDS) strategy and improve productivity for small workgroups throughout your organisation.

Improve speed and efficiency

Enhance productivity and meet every demand with the Lanier MP2001SP. With warm-up time of only 20 seconds or less and first-print times as fast as 6 seconds, it's ready to move as fast you are. The compact and reliable system produces high-quality output at up to 20 pages per minute. Its full-front-access design allows users to connect to key functions effortlessly for easy operation and maintenance. Plus, with its powerful processing engine, the system can manage multiple copying, printing and scanning projects for continuous workflow.



User-friendly operations

The Lanier MP2001SP offers portable and Cloud-based applications to meet the evolving demands of today's mobile workforce and to share information throughout your organisation. With a built-in USB/SD card slot on the control panel, workers can print PDF, TIFF and JPEG files right at the device —without additional drivers or software.* Printing of e-mails, photos, web pages and documents can also be initiated from smartphones and tablets without software to download, drivers to install or cables to connect.

*Requires HDD option.



Customise your workflows

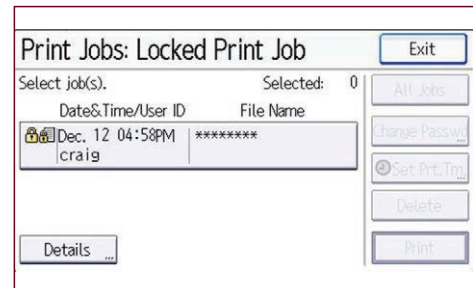
The Lanier MP2001SP can be configured to accommodate your unique preferences to streamline copying, printing and scanning and minimise time spent navigating between jobs. Take advantage of the easy-to-view, tiltable 11 cm colour control panel with a customisable home screen and icons for personalised, one-step shortcuts to common tasks. Choose from three available function keys to assign other pre-set tasks for even more convenience. Plus, the control panel includes a home screen button so users can return to the main menu instantly.



Reliable performance, every time, everywhere

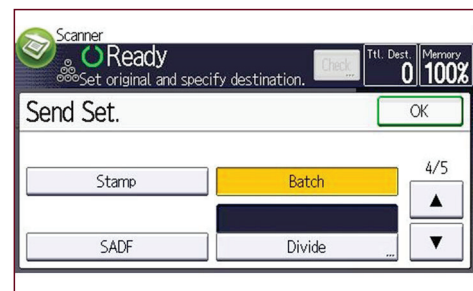
Advanced security controls

Protect critical information at every stage of the document lifecycle via state-of-the-art security features. With the optional hard disk drive (HDD) installed, the Lanier MP2001SP offers user password-protected and user-specific authentication to ensure only authorised users have access to key documents and system privileges. Print jobs can be stored at the device until users swipe an ID card or enter ID information at the control panel to release them. Unauthorised Copy Control prevents fraudulent duplication of sensitive documents. The DataOverwriteSecurity System (DOSS) ensures latent images stored on the internal HDD are protected. For even greater security, it includes AES 256-bit/SHA-2 enhanced encryption for advanced protection of your most critical data.



Combine capabilities in one compact system

Minimise your investment - not your performance - with the Lanier MP2001SP. With standard printing and copying, the versatile system offers 600 dpi image quality output along with advanced scanning features and optional fax capabilities in a compact design, making it ideal for everyday workflow in small offices and workgroups. Use enhanced batch scanning to scan one-sided and two-sided originals in a single job without generating unnecessary blank pages. With the fax option, users can route documents directly to e-mail accounts or shared folders and send faxes using the Internet instead of phone lines to reduce costs and enhance productivity. In addition, with the Remote Fax feature, an organisation can designate one MP2001SP with fax capability as the hub to send and receive documents from other networked Lanier services-led MFPs without fax capabilities.



Distribution made easy

Minimise hardcopy storage while improving communications. The Lanier MP2001SP allows you to scan black-and-white and colour documents and save them instantly to shared folders, computers, media cards and more at no additional cost. Unlike black-and-white only scanning of colour documents, colour scanning preserves the original look of the document, enabling the capture of highlights, annotations and other image details. Users can also look at thumbnail previews of the scanned documents to ensure quality and accuracy before they are distributed. With optional Lanier GlobalScan NX software, users can create unique scanning workflows that automate distribution and minimise manual errors to streamline the way your office shares information.



Discover how convenient value can be

Handle any task - big or small

The Lanier MP2001SP is designed to deliver a wide range of documents on media up to A3. You can add a 100-sheet capacity automatic reversing document feeder (ARDF) to handle multi-page originals for single- or two-sided copying and scanning. Optional paper banks expand the standard 350-sheet paper capacity to 1,350 sheets for longer print runs. The system includes a Document Server* to store up to 3,000 electronic documents at the device for convenient access and retrieval. Plus, an Auto Job Promotion* feature can skip specific error jobs and proceed to subsequent print jobs for uninterrupted throughput.

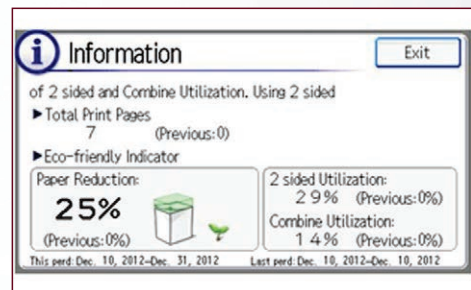
*Requires HDD option.



Impact your office - and the environment

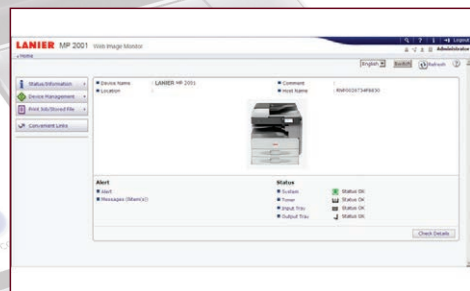
Maximise energy efficiency while minimising operating costs. The Lanier MP2001SP can save more electricity by shortening the time it takes to recover from its "1W" Sleep Mode to only 10 seconds. The system offers automatic duplexing for copying, faxing and printing to reduce paper consumption. An Eco-friendly Indicator is prominently displayed on the control panel to encourage users to be more environmentally responsible. It displays the print history for each user as well as the subsequent impact on the environment. With the Quota Setting* feature, administrators can take control of excessive print costs and set print quotas for individual users as well.

*Requires HDD option.



Integrate seamlessly

Connectivity is easy in any shared-use office environment with a standard Gigabit Ethernet or USB 2.0 interface. Take advantage of Lanier's Embedded Software Architecture and incorporate customised applications and software solutions to boost productivity and reduce operating costs. Incorporate innovative print driver deployment, automated meter collection, Cloud-based fleet reports and more. In addition, Web Image Monitor allows users or administrators to check status or configure settings of the device through any web browser.





Lanier MP2001SP shown with optional 1 Bin Tray BN2010, Paper Feed Unit PB2010 .

- 1 Full-Colour LCD Control Panel:** Adjust for optimal viewing and navigate from job to job easily via the intuitive, 11 cm tiltable control panel featuring a customisable home screen, a Home key, programmable shortcut icons, access to Cloud solutions and more.
- 2 USB/SD Card Slots:** Print directly from or scan to USB/SD cards and preview files before printing..
- 3 100-Sheet Automatic Reversing Document Feeder (Optional):** Handles multi-page and double-sided originals up to A3.
- 4 Bypass Tray:** Print on envelopes, labels and other unique paper stock through the 100-Sheet Bypass Tray.
- 5 Duplexing:** Minimise paper use and storage costs with automatic duplexing.
- 6 ID Copying:** Save time and paper by copying both sides of an ID card or other small document onto a single sheet.
- 7 Paper Trays (Standard):** 250 sheets x 1 Trays + 100-Sheet Bypass Tray for a 350 sheet total capacity.
- 8 Paper Banks (Optional):** 500 sheets x 1 or 2 Trays plus standard Paper Trays for a 1,350 sheet maximum capacity.
- 9 Hard Disk Drive (Optional):** Take advantage of Lanier MP2001SP enhanced features and protect critical information at every stage of the document lifecycle. Enhanced features include Document Server, DOSS, Sample Print, Locked Print, Hold Print, Quota Setting/Account Limits and more.

Specifications

GENERAL

Warm-up time: 20 seconds
First output speed: 6 seconds
Continuous output speed: 20 pages per minute
Memory: Standard: 1 GB
Maximum: 1.5 GB
Dimensions (W x D x H): 587 x 568 x 460 mm
Weight: 38 kg
Power source: 220 - 240 V, 50/60 Hz

COPIER

Copying process: Laser beam scanning and electrophotographic printing
Multiple copying: Up to 999 copies
Resolution: 600 dpi
Zoom: From 50% to 200%

PRINTER

Printer language: Standard: PCL5e, PCL6, XPS
Option: Adobe® PostScript® 3™
Print resolution: 600 x 600 dpi
Interface: Standard: USB 2.0, SD slot, USB Host I/F,
Ethernet 10 base-T/100 base-TX,
Ethernet 1000 Base-T

Option: Bi-directional IEEE 1284, Wireless LAN (IEEE 802.11a/b/g), Bluetooth
Network protocol: TCP/IP (IP v4, IP v6), Option (IPX/SPX)

Windows® environments: Windows® XP, Windows® Vista, Windows® 7, Windows® 8, Windows® Server 2003, Windows® Server 2008, Windows® Server 2008R2

Mac OS environments: Macintosh OS X v10.5 or later
UNIX environments: UNIX Sun® Solaris: 2.6, 2.7, 2.8, 2.9, 2.10
HP-UX: 10.x, 11.x, 11i v2, 11i v3
SCO OpenServer: 5.0.6, 5.0.7, 6.0
RedHat® Linux Enterprise: 4, 5, 6
IBM® AIX: 5L v5.3, 5L v6.1, 5Lv7.1
IBM® System i5™ HPT

Novell® Netware® environments: v6.5
SAP® R/3® environments: SAP® R/3®

SCANNER

Scanning speed: Full colour: Maximum 50 originals per minute
B/W: Maximum 50 originals per minute
Maximum: 600 dpi
Resolution: A3, A4, A5, B4, B5, B6
Original size: Single page TIFF, Single page JPEG, Single page PDF, Single page High compression PDF, Single page PDF-A, Multi page TIFF, Multi page PDF, Multi page High compression PDF, Multi page PDF-A
File format: Network TWAIN, Scanner utility

Bundled drivers: Network TWAIN, Scanner utility
Scan to: E-mail, Folder, USB, SD card, SMB, FTP, URL, NCP

FAX

Circuit: PSTN, PBX
Compatibility: ITU-T (CCITT) G3
Resolution: 8 x 7.7 line/mm, 200 x 200 dpi
8 x 3.85 line/mm, 200 x 100 dpi
Transmission speed: G3: 2 second(s) (200 x 100 dpi, JBIG)3 second(s) (200 x 100 dpi, MMR)
Modem speed: Maximum: 33.6 Kbps
Scanning speed: 2 second(s)
Memory capacity: Standard: 4 MB
Maximum: 1,500 MB

PAPER HANDLING

Recommended paper size: Standard paper tray(s): Minimum (A5), Maximum (A3)
Bypass tray: Minimum (A6), Maximum (A3)
Paper input capacity: Maximum: 1,350
Paper output capacity: Maximum: 350 sheets
Paper weight: Standard paper tray(s): 60 - 105 g/m²
Bypass tray: 60 - 162 g/m²

ECOLOGY

Power consumption: Maximum: 1,550 W
Ready mode: 113 W
Sleep mode: 0.6 W
TEC (Typical Electricity Consumption): 892 W/h

SOFTWARE

Standard: SmartDeviceMonitor, Web SmartDeviceMonitor®, Web Image Monitor
Optional: GlobalScan NX, Card Authentication Package, SAP R/3 Custom Device Type

OPTIONS

Platen cover, ADF handle, ARDF, 1 x 500-sheet paper tray, 2 x 500-sheet paper tray, One-bin tray, Low cabinet, Medium cabinet, High cabinet, Hard Disk Drive, RAM, Bi-directional IEEE 1284, Wireless LAN (IEEE 802.11a/g), Bluetooth, VM Card, Network, Browser unit, Counter interface, File format converter, Copy Data Security Unit, Fax Connection Unit, Fax marker, Fax option, Unicode Font Package for SAP

CONSUMABLES

Toner capacity: Black: 9,000 prints

For availability of models, options and software, please consult your local Lanier supplier.

ISO9001 certified, ISO14001 certified, ISO27001 certified

All brand and/or product names are trademarks of their respective owners. Specifications and external appearance are subject to change without notice. The colour of the actual product may vary from the colour shown in the brochure. The images in this brochure are not real photographs and slight differences in detail might appear.

Copyright © 2012 Lanier Australia. All rights reserved. This brochure, its contents and/or layout may not be modified and/or adapted, copied in part or in whole and/or incorporated into other works without the prior written permission of Lanier Australia.

LANIER

Lanier (Australia) Pty Ltd HEAD OFFICE
854 Lorimer Street | Port Melbourne | Victoria 3207

SYDNEY Branch Office
Suite G2 Riverside Corporate Park |
2 Richardson Place | North Ryde NSW 2113

BRISBANE Branch Office
Unit 1/50 Borthwick Avenue | MURARRIE | QLD 4172

PERTH Branch Office
19 Collingwood Street | Osborne Park | WA 6017

ADELAIDE Branch Office
Unit 2, 8 Union Street | Stepney | SA 5069

Lanier Customer Care: 1300 362 345
www.lanier.com.au