

B&W Production Printer

RICOH Pro 8100EXe/8100se/ 8110se/8120se

Printer Copier Facsimile Scanner

RICOH
imagine. change.



Pro 8100EXe

95 ppm monochrome

Pro 8100se

95 ppm monochrome

Pro 8110se

110 ppm monochrome

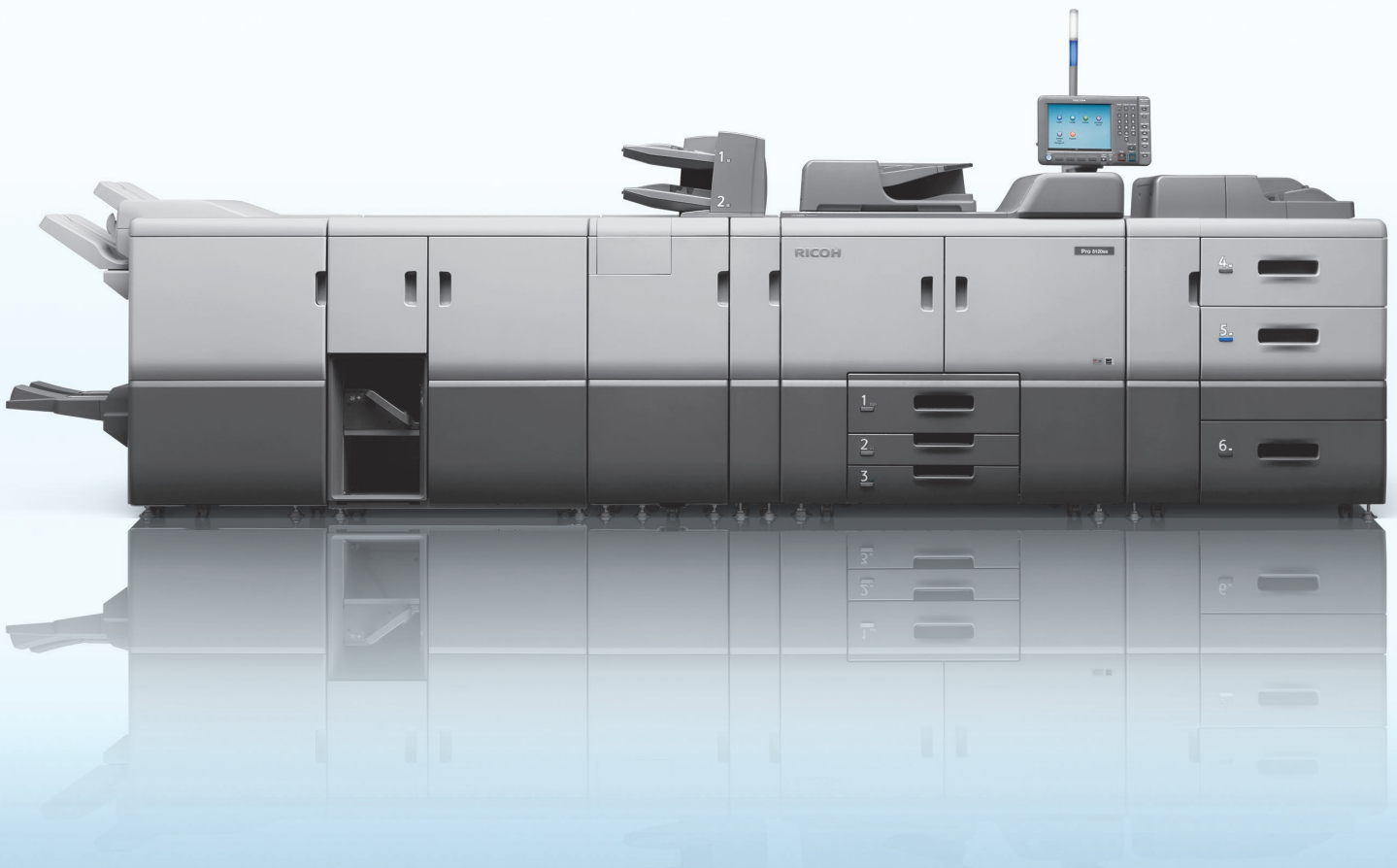
Pro 8120se

135 ppm monochrome

High-impact, low-cost production workflow

The RICOH® Pro 8100se Series black-and-white production MFP offers a combination of power and versatility to deliver high-quality output that impresses system operators as much as customers. Take advantage of easy-to-use controls and advanced print technology to perform a wide range of commercial and corporate production tasks with incredible precision in less time. Designed to print quickly on diverse media, it adds capacity to your workflow and can contribute to your bottom line. Select it as the primary device in production-class print environments, or integrate it with an extensive Ricoh Managed Document Services (MDS) strategy.

- Produce up to 135 black-and-white pages per minute
- Create compelling images with up to 1200 x 4800 dpi resolution
- Handle a wide range of media up to 13" x 19.2"
- Distribute documents freely with advanced scanning capabilities
- Access to 12,650 sheets for outstanding paper capacity
- Complete more jobs in-line for greater productivity



Turn more jobs into more profitable opportunities

Innovative technology improves productivity, quality and efficiency

Create with clarity

Take advantage of 1200 x 4800 dpi resolution to produce reports, booklets, newsletters and more with crisp text and images. The RICOH Pro 8100se Series uses a new, granular toner with smaller, more uniform particles to create sharper shapes and smoother halftones. Its innovative Vertical Cavity Surface Emitting Laser (VCSEL) technology produces 1200 x 4800 image resolution for precise front-to-back registration. Plus, it maintains exceptional alignment on each page for manuals, postcards and other two-sided documents.



Extend print runs

Keep pace with the most aggressive production demands. The RICOH Pro 8100se Series MFP is engineered to pack a wide range of features into compressed production room spaces. It prints up to 135 pages-per-minute for incredible throughput, with duty cycle runs up to three million prints per month. Intelligent controls maintain optimal temperatures, which extend duty cycles and part life. Paper guides are designed to reduce static electricity and optimize paper-sensing sequencing for maximum uptime.



Handle more types of media

Ample paper capacity of 12,650 sheets is bolstered by diverse media handling that enables users to print on paper up to 13" x 19.2" (SRA3+). Print postcards with thicker stocks up to 350 g/m² for standard output and up to 256 g/m² for duplex. The RICOH Pro 8100se Series accommodates textured, heavy-coated and other special stocks automatically — including envelopes. A robust Paper Library features preset and fully customizable paper settings. The library also includes more than 60 frequently used printing attributes to ensure reliability and productivity.

Tray	Paper Type	Weight	Size	Resolution
Tray 1	Plain Paper	75gsm	A4	1200x4800dpi
Tray 2	Musky Offset Digital	110gsm	12x18" (SRA3)	1200x4800dpi
Tray 3	Musky Golden Copy	98-216gsm	12x18" (SRA3)	1200x4800dpi
Tray 4	Hanemill 11 Copy Plus	75gsm	12x18" (SRA3)	1200x4800dpi
Tray 5	Futura Laser Gloss	216gsm	12x18" (SRA3)	1200x4800dpi
Tray 6	Sterling Ultra Digital Gloss	118gsm	12x18" (SRA3)	1200x4800dpi
Tray 7	Plain Paper	75gsm	8x11" (SRA3)	1200x4800dpi
Interior Lower Tray	Auto Detect			
Interior Lower Tray	Auto Detect			

Operate with ease

The RICOH Pro 8100se Series includes several unique features designed specifically to simplify production tasks. The large control panel offers thumbnail views, previews and versatile editing controls. It's raised to give users immediate access while keeping them in a comfortable working position. An Operator Call light extends from the top of the MFP so users can be alerted quickly — even from across the room — that the device requires attention for low supply levels or other service needs. An Active Tray indicator light on each paper tray signals which one is in use, so refills can be completed without interrupting print runs.



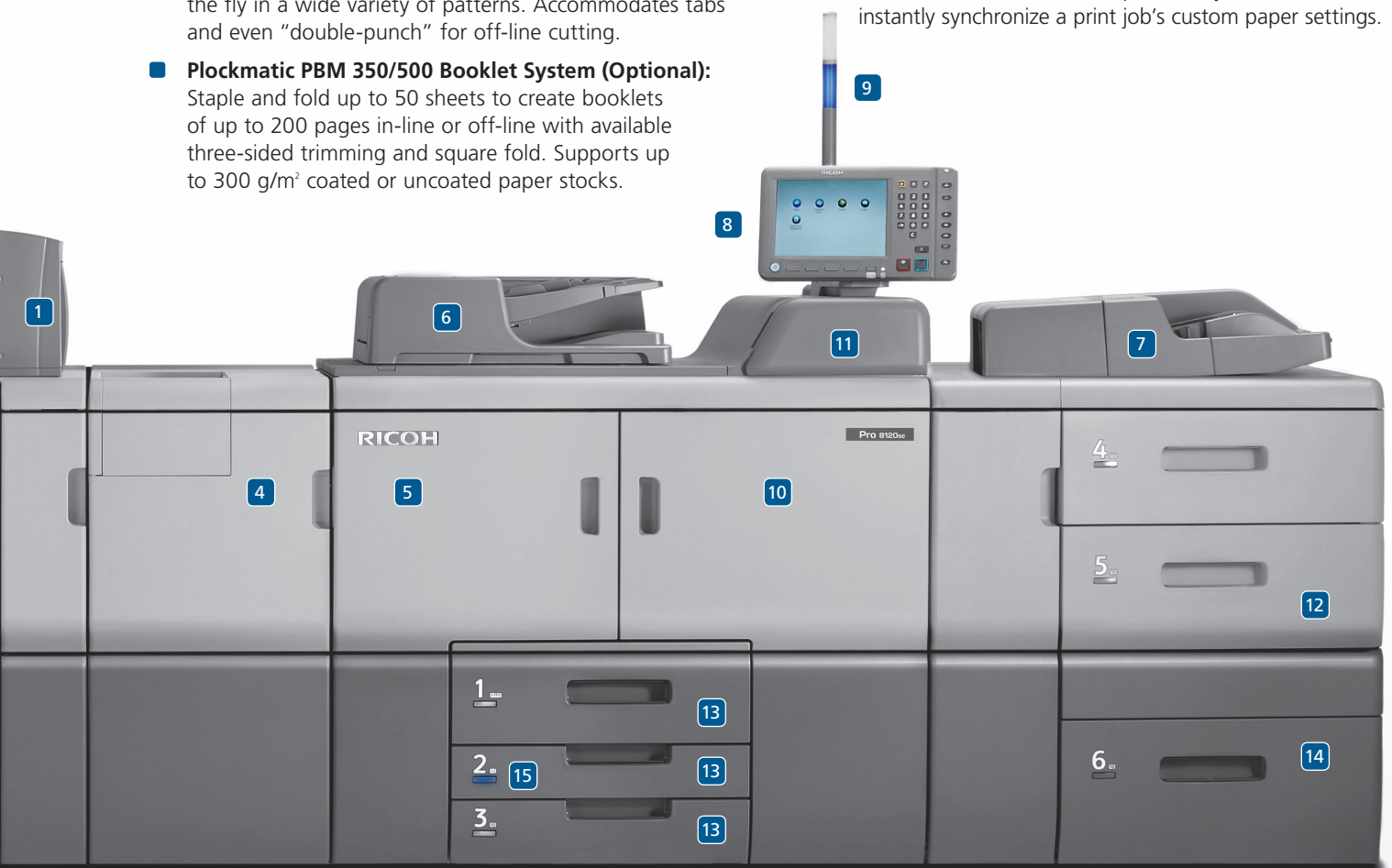
Fully featured to give you full control of production printing

- 1 CI5030 Cover Interposer Tray (Optional):** Feed pre-printed sheets from two sources for front and back covers.
- 2 SR5050 3,000-Sheet Staple Finisher (Optional):** Achieve 100-sheet stapling with the ability to output documents up to 13" x 19.2". Add the optional Hole Punch Unit for even more flexibility.
- 3 SR5060 2,500-Sheet Booklet Finisher (Optional):** Produce stapled and saddle-stitched booklets cost-effectively with the in-line Booklet Finisher. Also available with an optional Booklet Trimmer Unit and Hole Punch Unit.
- 4 FD5020 Multi-Folding Unit (Optional):** Execute Z-folds, half folds, gatefolds and more to create a variety of finished documents.
- 5 DU5030 Decurl Unit (Optional):** Promote more accurate stacking and higher throughput by reducing the risk of paper curling.
- 6 220-Sheet Automatic Document Feeder:** Copy and scan jobs more efficiently with single-pass color duplex scanning — up to 220 ipm (in duplex mode). A built-in sensor also prevents missing pages caused by original double feeding.
- 7 BY5010 Multi Bypass Tray (Optional):** Feeds up to 550 sheets of special paper stocks and sizes for expanded system capacity and document output types.
- 8 Full-Color, 10.4" SVGA Control Panel:** Easily navigate from job to job with fingertip control via the post-mounted, intuitive touch screen.
- 9 Operator Call Light:** Visually alert operators to changes in system status for prompt attention.
- 10 VCSEL and Granular Toner Technology:** Vertical Cavity Surface Emitting Laser and high-quality toner provide more vivid prints and smooth gradations for improved text, fine lines, graphics and photographic reproductions.
- 11 500GB Hard Disk Drive:** Secure documents with DataOverwriteSecurity System (DOSS), data encryption, Locked Print and more.
- 12 Oversize and Heavy Media Support:** Accepts 13" x 19.2" paper sizes and heavy media (up to 110 lb. Cover through the RT5080 LCT) to give you many more options for in-house production.
- 13 Paper Trays:** Standard paper sources include the tandem 2 x 1,100-Sheet Paper Tray and two 550-Sheet Paper Trays for a total paper capacity of 3,300 sheets. With additional paper sources, this system can hold up to 12,650 sheets.
- 14 RT5080 and RT5070 Large Capacity Trays (Optional):** For maximum versatility, select the RT5080 4,400-Sheet LCT to reliably feed up to 110 lb. Cover stock (300 g/m²) and up to 13" x 19.2" sheets. Or, choose the RT5070 5,000-Sheet LCT to handle paper sizes up to 8.5" x 11" and up to 80 lb. Cover stock (216 g/m²).
- 15 Active Tray Indicators:** Indicator light shows which tray is in use, allowing operators to refill other paper sources while the system is running.
- 16 RB5020 Ring Binder (Optional):** Automatically collate, hole punch, insert and close rings in-line for up to 100-sheet documents with no manual intervention.



RICOH Pro 8100se Series

- **17 SK5030 High-Capacity Stacker (Optional):** Enables longer unattended jobs with a 5,000-sheet stacking capacity. The stacker also includes one roll-away cart to quickly move large volumes of output to off-line binding or packing and shipping. For added security, the stacker door can be locked when printing confidential documents.
- **TK5010 A3/DLT Tray Kit (Optional):** For print shops that need large paper size capacity but have limited installation space, convert a standard paper drawer to an 11" x 17" drawer with the A3/DLT Tray Kit.
- **RT5100 Vacuum Feed Large Capacity Tray (Optional):** Support more types of media with a three-belt air-delivery system that offers high-level feeding accuracy for coated papers from 40 – 350 g/m². Use the optional BU5010 Bridge Unit and add two 4,400-sheet Vacuum Feed LCTs to increase total printer capacity to 12,650 sheets.
- **GB5010 Perfect Binder (Optional):** Glue-bind up to 200 sheets/booklet, including covers up to 300 g/m², along with three edges trimming for truly professional looking documents.
- **GBC StreamPunch™ Ultra (Optional):** Create professional-quality documents with in-line punching on the fly in a wide variety of patterns. Accommodates tabs and even "double-punch" for off-line cutting.
- **Plockmatic PBM 350/500 Booklet System (Optional):** Staple and fold up to 50 sheets to create booklets of up to 200 pages in-line or off-line with available three-sided trimming and square fold. Supports up to 300 g/m² coated or uncoated paper stocks.
- **RPIP Interface Box Type S3:** Connect the RICOH Pro 8100se Series MFP in-line to a wide range of third-party finishing devices for highly automated workflows.
- **Broad Compatibility:** Quickly integrate these systems with built-in compatibility for PC and Mac environments in LAN or wireless networks.
- **Versatile Controller Support:** The standard embedded print controller helps meet your unique printing and workflow requirements most efficiently. The embedded controller supports PCL5e/6 as standard PDL. Optional genuine Adobe PostScript 3 and genuine IPDS are available to integrate seamlessly into almost any host environment with incredible reliability and page-recovery capabilities.
- **Fiery® EB-32 Controller (Optional):** A new Fiery® EB-32 Controller offers end-to-end automated workflows for advanced print management to simplify and expedite production printing. This digital front end (DFE), based on EFI's popular Fiery Server technology, supports a wide range of capabilities including Advanced Job Re-order, Tab Inserts and more. The controller's Paper Catalog feature also automatically integrates with the RICOH Pro 8100se Series Paper Library function to instantly synchronize a print job's custom paper settings.





Fast-paced production for demanding workloads

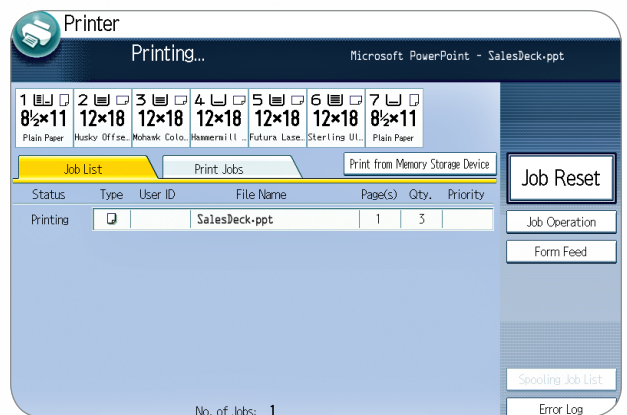
Unrelenting productivity and efficiency

Turn productivity into potential profits. The RICOH Pro 8100se Series MFP simplifies and expedites maintenance tasks to keep workflow moving. Trained users can replace key components and consumables — including drums, rollers, fusing units and more — in only a few minutes without technical assistance. In fact, with the twin toner bottle mechanism, depleted toner bottles can be replaced without any print interruptions.



Reliable output under control

The RICOH Pro 8100se Series MFP delivers consistent image quality with unwavering reliability. It features an indirect image transfer mechanism to minimize scratch marks, toner scattering and shock jitter to economically produce near-offset-quality output. The oil-less fusing unit transfers images seamlessly from thin to thick paper stocks without streaking. This high performance MFP also features a single-pass document feeder that enables users to scan both sides of a letter-size document at 220 images per minute.



Automated, end-to-end finishing

Bring more jobs in-house. The RICOH Pro 8100se Series offers extensive in-line finishing options to manage professional-grade documents, from input to output, with less manual labor. A redesigned finishing interface dramatically reduces the time between job runs. It delivers fully automated stapling, hole punching, saddle stitching, cover insertion, de-curling and more for faster turnarounds. An impressive ring binder accepts oversized paper and thicker stocks. The booklet finisher features a limitless output mode for virtually non-stop output. In addition, the system offers multiple-page folding for direct mail and other output.



Manage jobs with ease, protect them with advanced controls

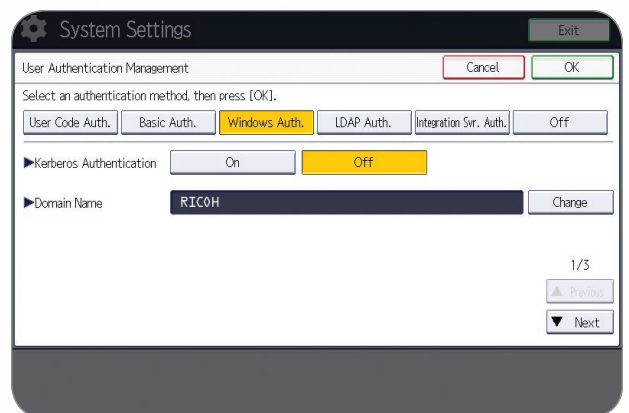
Versatility that can be seen — and shared

Reduce operating costs by managing a wider range of document tasks using a single versatile device. This powerful MFP includes scan-to-email, folder, URL, PDF and more, so documents can be distributed instantaneously for faster, more affordable communications. Search PDF files via keywords with the embedded OCR option. In addition, the MFP allows users to print files from or scan to USB or SD cards for convenient media printing while on the move.



Protect documents as well as your fleet

The RICOH Pro 8100se Series includes a host of features to simplify fleet management and security tasks. Administrators can take advantage of @Remote to collect meter data, receive toner and service alerts automatically and generate critical reports. User authentication controls ensure that only authorized owners can access print jobs with sensitive information. Secure Socket Layer (SSL) technology protects data from interception, analysis and tampering. DataOverwriteSecurity System (DOSS) automatically overwrites any files on the hard drive to render them unreadable. HDD encryption adds another layer of protection against hackers.



Reduce energy consumption

In addition to the system's ENERGY STAR® rating, standard one-pass duplex scanning saves steps and resources to maximize efficiency. And for organizations looking to evaluate products that deliver environmentally friendly solutions, the RICOH Pro 8100se Series qualifies at the Gold** level for EPEAT® (Electronic Product Environmental Assessment Tool) for imaging equipment. EPEAT is a comprehensive environmental procurement program based on IEEE 1680 International Standards. It includes a rating of various environmental criteria on products and environmental programs to help identify greener imaging equipment and other electronics devices. The program includes energy efficiency, take-back programs for equipment, packaging and consumables, reduction/elimination of environmentally sensitive substances, and other important environmental attributes. For more information, see <http://www.rfg-usa.com>.



*The RICOH Pro 8100EXe model is not qualified by ENERGY STAR or EPEAT.
**EPEAT rating is applicable only in the USA.

RICOH Pro 8100EXe/8100se/8110se/8120se

SYSTEM SPECIFICATIONS

Specifications

Configuration	Console
Standard Modes	Pro 8100EXe – Copy Pro 8100se/8110se/8120se – Copy/Print/Scan
Print/Copy Process	Electrostatic transfer with indirect image transfer system
Fusing	Oil-less belt fusing method
System Memory	2GB RAM / 500GB (250 x 2) HDD
Document Feeder	Standard 200-Sheet ADF with single-pass color duplex scanning
Control Panel	Full-color 10.4" SVGA touch panel
Copy Resolution	Up to 1200 x 4800 dpi
Paper Registration	Sensor and Mechanical
Quantity Indicator	1 – 9,999
Original Size	Up to 11" x 17" (297 x 432mm) (from platen)
Warm-Up Time	Less than 360 sec. (from main switch)
Recovery Time from Sleep to Scan	Pro 8100EXe: 11sec. Pro 8100se: 11sec. Pro 8110se: 11sec. Pro 8120se: 11sec.
First Copy Speed	Pro 8100EXe: 6.3 sec. Pro 8100se: 6.3 sec. Pro 8110se: 5.6 sec. Pro 8120se: 4.6 sec.
Output Speed	Pro 8100EXe and Pro 8100se: 95 ppm Pro 8110se: 110 ppm Pro 8120se: 135 ppm
ADF Speed	Simplex: 110 ppm Duplex: 220 ppm B&W or Full-color
Paper Capacity	Tray 1: 1,100 x 2 Trays 2 – 3: 550 x 2 Total Standard / Max. Capacity: 3,300 / 12,650 sheets
Paper Size	Tray 1: 8.5" x 11" Trays 2 – 3: 5.5" x 8.5" to 11" x 17"
Paper Weight	Trays 1 – 3: 14 lb. Bond – 95 lb. Cover (52 – 256 g/m ²)
Magnification	7 reduction and 5 enlargement
Zoom	25% to 400% in 1% increments
Power Requirements	208-240V/50/60Hz (dedicated)
Typical Electricity Consumption (TEC)	Pro 8100EXe: 12.3 kWh/week Pro 8100se: 12.3 kWh/week Pro 8110se: 14.3 kWh/week Pro 8120se: 18.6 kWh/week
Max. Power Consumption	Pro 8100EXe: 2,800W Pro 8100se: 2,800W Pro 8110se: 3,020W Pro 8120se: 3,270W
Dimensions (WxDxH)	52" x 43.3" x 57.5" (1,320 x 1,100 x 1,460mm)
Weight	915 lbs. (415 kg)

Copier Features

Duplex, Simplified Display, Auto Paper Selection, Auto Reduce/Enlarge, Auto Start, Auto Tray Switching, Auto Image Density, User Codes (1,000), Job Programs (25), Electronic Sort/Stack, Image Rotation, Rotate Sorting, Interrupt Copy, User Tools, Job Presets, Book/Serials/Combine Copying, Cover/Chapter/Slip Sheet, Tabs, Sample Copy, Stamps/Numbering, Bates Numbering, Shift/Erase/Margin Adjustment, Customizable Home Screen, Import/Export of Preference Settings, Eco-Friendly Indicator, Power On/Off Timer, External USB Keyboard Support, MFP Browser for @Remote, Copy Reservation (8), A3/DLT Counter.

Security Features

DataOverwriteSecurity System (DOSS), Data Encryption (Address Book, SSL Communication, S/MIME, IPsec Communication, HDD), User Authentication (Windows, LDAP, Basic, User Code, 802.1x Wired), Unauthorized Copy/Print Control, Quota Setting, SMTP over SSL, Mandatory Security Information Print (Compulsory Security Stamp)

Printer Specifications (Standard)

CPU	Intel® Celeron® Processor P4505 – 1.86 GHz
RAM	2 GB
HDD	500 GB (250 GB x 2)
Max Print Resolution	1200 x 4800 dpi via VCSEL
Standard Interfaces	Ethernet (1000/100Base-TX), USB2.0 Type A/Type B, SD slot
Optional Interfaces	IEEE 1284/ECP, Wireless LAN (IEEE802.11a/b/g/n), Bluetooth
Network Protocol	TCP/IP (IPv4, IPv6), IPX/SPX (with NetWare option)
Network Operating Systems	Windows XP/Vista/7/Server 2003/Server 2003R2/Server 2008/Server 2008R2, NetWare 6.5; UNIX Sun Solaris, HP-UX, SCO OpenServer, RedHat Linux, IBM AIX; MAC OS X 10.2 or later; SAP R/3; NPDS Gateway; IBM iSeries AS/400 using OS/400 Host Print Translation
Print Drivers	Standard: PCL5c, PCL6 (XL), PDF, XPS Optional: Adobe PS3, IPDS
Fonts	PCL: 45 scalable + 13 international; PDF: 136 Roman; IPDS: 108 Roman (optional)
Printer Features	Sample/Locked/Hold/Store Print, Store and Print, PDF Direct Print, Mail to Print, Classification Code, Bonjour Support, Windows Active Directory Support, DDNS Support, PCL Resident Font Adoption, Mobile Driver, XPS Support, WS Print, Media Direct Print, Banner Page Print, Auto Job Promotion, Poster Print, WPS (Wi-Fi Protected Setup)

Fiery EB-32 Controller (Optional)

Scanner Specifications (Standard)

Scanning Resolution	Up to 600 dpi (TWAIN: 1200 dpi)
Scan Area	Up to 11.7" x 17" (297 x 432mm)
Scan Speed (LTR/A4)	Simplex: 120 ipm; Duplex: 220 ipm
Output Format	Single Page: TIFF/JPEG/PDF/High Compression PDF Multi Page: TIFF/PDF/High Compression PDF
Compression	B&W – 1bit (MH/MR/MMR/JBIG2), Grayscale (JPEG); Full-Color (JPEG)
Interface Support	Ethernet (1000/100Base-TX), USB2.0 Type A, SD card slot, Optional Wireless LAN (IEEE802.11 a/b/g/n)
Authentication	SMTP/POP before SMTP
Scanner Features	Scan to USB/SD, WS Scanner, Scan-to Email/SMB/FTP/URL/NCP/PDF/A/Digitally Signed PDF/Searchable PDF, TWAIN Scanning, LDAP Support, Universal Send, Distributed Scan Management, Preview Before Transmission, PDF Encryption, Drop Out Color Send, B&W/FC Photo, B&W/FC Text, Auto Color Selection, Auto Density, Auto Size Detection, Image Rotation, Mixed Size/SADF/Batch Mode, Reduce and Enlarge, Split Scan, JBIG2 Compression Support

Document Server Specifications (Standard)

Max. Stored Documents	3,000
Max. Pages per Document	1,000
Max. Stored Pages	9,000
Folder Management	With password, up to 200 personal folders

Accessories

LCIT RT5100 Vacuum Feed Large Capacity Input Tray

Paper Capacity	4,400 sheets (2,220 x 2)
Paper Size	A5 (LEF/5.5" x 8.5" – 13" x 19.2"
Paper Weight	11 lb. Bond – 130 lb. Cover (40 – 350 g/m ²)
Power Consumption	Less than 860W
Power Supply	100 – 127V
Dimensions (WxDxH)	41.5" x 28.7" x 39.4" (1,054 x 730 x 1,000mm)
Weight	Less than 484 lbs. (220 kg)

BU5010 Bridge Unit for LCIT RT5100

Paper Size	Same as LCT RT5100
Paper Weight	Same as LCT RT5100
Power Source	From LCT RT5100
Dimensions (WxDxH)	13" x 28.7" x 29.4" (330 x 730 x 1000mm)
Weight	Less than 132 lbs. (60 kg)

RT5080 A3/DLT Large Capacity Tray (LCT)

Paper Capacity	4,400 sheets
Paper Size	Up to 13" x 19.2"
Paper Weight	11 lb. Bond – 110 lb. Cover (40 – 300 g/m ²)
Size (WxDxH)	34" x 28.7" x 39.4" (865 x 730 x 1000mm)
Weight	407 lbs. (185 kg)

RT5070 A4/LT Large Capacity Tray (LCT)

Paper Capacity	5,000 sheets
Paper Size	8.5" x 11"
Paper Weight	14 lb. Bond – 80 lb. Cover (52 – 216 g/m ²)
Size (WxDxH)	21.3" x 28.7" x 39.4" (540 x 730 x 1,000mm)
Weight	233.2 lbs. (106 kg)

BY5010 Multi Bypass Tray

Paper Capacity	550 sheets
Paper Size	Up to 13" x 19.2"
Paper Weight	14 lb. Bond – 80 lb. Cover (52 – 216 g/m ²)
Size (WxDxH)	27.2" x 22.1" x 8.3" (690 x 561 x 210mm)
Weight	44 lbs. (20 kg)

A3/DLT Tray Kit (TK5010)

Paper Capacity	1,000 sheets
Paper Size	Up to 11" x 17"
Dimensions (WxDxH)	19.5" x 20.9" x 6.9" (495 x 530 x 175mm)
Weight	22 lbs. (10 kg)

CI5030 2 Source Cover Interposer

Paper Size	5.5" x 8.5" – 13" x 19.2"
Paper Weight	17 lb. Bond – 110 lb. Index (64 – 216 g/m ²)
Stack Capacity	200 sheets x 2 trays
Size (WxDxH)	21.2" x 28.7" x 50.8" (540 x 730 x 1290mm)
Weight	165 lbs. (75 kg)

SK5030 High Capacity Stacker

Paper Capacity	5,000 sheets (SRA3, A4, LT size), Proof Tray: 250 Sheets
Output Jogger	Standard
Rollaway Cart	Standard (optional additional carts available)
Power Consumption	Less than 120W
Power Supply	120 – 127V, 50/60Hz
Dimensions (WxDxH)	35.4" x 28.7" x 39.8" (900 x 730 x 1010mm)
Weight	Stacker: 264 lbs. (120 kg); Roll Away Cart: 33 lbs. (15 kg)

SR5050 3,000-Sheet Finisher with 100-Sheet Stapler

Capacity (Proof Tray)	250 sheets (8.5" x 11" or smaller) 50 sheets (8.5" x 14" or larger) 8.5" x 11" – 3,000 sheets 8.5" x 14" – 11" x 17" – 1,500 sheets 12" x 18" – 13" x 19" – 1,000 sheets
Capacity (Shift Tray)	5.5" x 8.5" – 13" x 19.2" Proof Tray: 16 lb. Bond – 80 lb. Cover (52 – 216 g/m ²) Shift Tray: 14 lb. Bond – 110 lb. Cover (40 – 400 g/m ²)
Staple	8.5" x 11" – 2,100 sheets 8.5" x 14" – 11" x 17" – 2,500 sheets
Staple Position	Top, Bottom, 2 Staples, Top Slant
Size (WxDxH)	39.2" x 28.7" x 44.3" (996 x 730 x 1126mm)
Weight	246 lbs. (112 kg)

SR5060 2,500-Sheet Booklet Finisher

Capacity (Proof Tray)	250 sheets (8.5" x 11" or smaller) 50 sheets (8.5" x 14" or larger)
Capacity (Shift Tray)	8.5" x 11" – 2,500 sheets 8.5" x 14" – 11" x 17" – 1,500 sheets 12" x 18" – 13" x 19" – 1,000 sheets 5.5" x 8.5" – 13" x 19"
Paper Size	Proof Tray: 16 lb. Bond – 80 lb. Cover (52 – 216 g/m ²)
Paper Weight	Shift Tray: 14 lb. Bond – 110 lb. Cover (40 – 400 g/m ²)
Staple	8.5" x 11" – 2,100 sheets 8.5" x 14" – 11" x 17" – 2,500 sheets
Staple Position	Top, Bottom, 2 Staples, Top Slant
Saddle Stitch Staple	8.5" x 11" – 13" x 19.2" – 20 sheets; Center 2 Position
Size (WxDxH)	39.2" x 28.7" x 44.3" (996 x 730 x 1126mm)
Weight	246 lbs. (112 kg)

TR5040 Booklet Trimmer

Trimming Type	One Side Edge
Trimming Capacity	1-20 sheets (2-40 pages after folding)
Paper Size	Up to 13" x 19.2"
Stack Capacity	Up to 60 sets
Limitless Stack	Yes
Size (WxDxH)	43.9" x 23.3" x 21.8" (1,115 x 591 x 555mm)
Weight	165 lbs. (75 kg)

FD5020 Multi-Folding Unit (with the Pro 8100EXe/8100se Series only)

Folding Type:	Single Sheet Mode: Z-Fold, Half-Fold/Print inside, Half-Fold/Print outside, Letter Fold-in/Print inside, Letter Fold-in/Print outside, Letter Fold-out, Double Parallel/Print inside, Double Parallel/Print outside, Gate-Fold/Print inside, Gate-Fold/Print outside
Paper Size:	Multiple Sheets Mode: Half-Fold/Print inside, Half-Fold/Print outside, Letter Fold-in/Print inside, Letter Fold-in/Print outside, Letter Fold-out Single Sheet Mode: Z folding: 8.5" x 11" – 12" x 18"; Half folding: 8.5" x 11" – 13" x 19.2"; Letter folding: 8.5" x 11" – 12" x 18"; Half folding: 8.5" x 11" – 13" x 19.2"; Letter Fold-out: 8.5" x 11"; Letter Fold-in: 8.5" x 11"
Size (WxDxH)	18.5" x 28.7" x 39.4" (470 x 730 x 1,000mm)
Weight	203 lbs. (92 kg)

RB5020 Ring Binder

Paper Size	8.5" x 11"/A4
Paper Weight	17 lb. Bond – 110 lb. Index (64 – 216 g/m ²)
Stack Capacity	Binding Mode: 110 sheets; Punching Mode: 100 sheets
Ring Bind Capacity	2-100 sheets
Number of Holes	LTR – 21, A4 – 23
Ring Supply	Black or White, Up to 50 or 100 sheets
Tab Stock	Supported
Size (WxDxH)	34.2" x 28.7" x 39.8" (870 x 730 x 1,010mm)
Weight	308 lbs. (140 kg)

GB5010 Perfect Binder

Booklet Size	Width: 201 – 297mm Length: 140 – 216mm
Booklet Thickness	Less than 23mm
Body Page Capacity	200 sheets
Cutting Directions	3 Edges, 1 Edge, None
Paper Weight	Body Pages: 200 sheets 20 lb. Bond (80 g/m ²) Cover Pages: 100 lb. Cover (300 g/m ²)
Stack Capacity/Booklet	50 sheets; 13; 100 sheets; 4
Size (WxDxH)	42.9" x 31.1" x 54.6" (1,090 x 791 x 1,387mm)
Weight	770 lbs. (350 kg)

DU5030 Decurl Unit

Decurl Function	Three steps pressure adjustment (from operation panel)
Paper Size	Up to 13" x 19.2"
Paper Weight	11 lb. Bond – 130 lb. Cover (40 – 350 g/m ²)
Size (WxDxH)	2.8" x 20.9" x 7.1" (71 x 509 x 181mm)
Weight	11 lbs. (5 kg)

PBM350/PBM500 Plockmatic Booklet Maker

Paper Size	8.5" x 11" – 12" x 18"
Paper Weight	16 lb. Bond – 100 lb. Cover (64 – 300 g/m ²)
Set Size	PBM350 – 2-35 sheets (20 lb. Bond/80 g/m ²) PBM500 – 2-50 sheets (20 lb. Bond/80 g/m ²)
Power Supply	115v, 60Hz
Dimensions (WxDxH)	55.9" x 35.4" x 27.6" (1,420 x 970 x 700 mm)
Weight	297 lbs. (135 kg)

GBC StreamPunch Ultra

Punched Paper Sizes	10 fixed sizes (A5 – A3)
Punched Media Weight	20 lb. Bond – 140 lb. Cover (up to 300 g/m ²)
Range	Yes
Tab Punching	Yes
"Two-Up" Punching	Yes
Dimensions (WxDxH)	17.5" x 28.7" x 39.4" (445 x 730 x 1,000mm)
Weight	220 lbs. (100 kg)

RP1 Interface Box Type S3 (For third-party finishing peripherals only)

Dimensions (WxDxH)	10.4" x 9.9" x 5.3" (265 x 253 x 136mm)
Weight	1.2 lbs. (0.55 kg)

Supply Yields

Toner:	Pro Toner 8100se 4 bottles/Ctn 82,000 per bottle* *6% fill on LTR size paper.
For maximum performance and yield, we recommend using genuine Ricoh parts and supplies.	

RICOH
imagine. change.

www.ricoh-usa.com

Ricoh Americas Corporation, 70 Valley Stream Parkway, Malvern, PA 19355, 1-800-63-RICOH
RICOH and the Ricoh Logo are registered trademarks of Ricoh Company, Ltd. All other trademarks are the property of their respective owners. ©2015 Ricoh Americas Corporation. All rights reserved. The content of this document, and the appearance, features and specifications of Ricoh products and services are subject to change from time to time without notice. Products are shown with optional features. While care has been taken to ensure the accuracy of this information, Ricoh makes no representation or warranties about the accuracy, completeness or adequacy of the information contained herein, and shall not be liable for any errors or omissions in these materials. Actual results will vary depending upon use of the products and services, and the conditions and factors affecting performance. The only warranties for Ricoh products and services are as set forth in the express warranty statements accompanying them.

R3590

The RICOH Pro 8100EXe model is not qualified by ENERGY STAR or EPEAT.

