

**LANIER**

**F312**

FACSIMILE



*Versatile capabilities and simple, efficient performance*

*This affordable fax system delivers a powerful combination of fax features, convenience copying, and optional laser printing in a compact design that is ideal for small businesses*



# Highly productive, cost-effective fax technology

In any organization, you need productive document communication systems to maximize efficiency and keep workflow moving. For independent businesses or smaller workgroups, cost-efficiency is equally important. The Lanier LF312 is a versatile yet affordable fax system that meets both needs. This powerful system combines essential fax features with convenience copying and optional laser printing — so it can handle a wide range of jobs. Its compact footprint allows you to place it with ease, and its user-friendly design ensures smooth operation, even for first-time users.

## **Superior versatility**

To help you complete every office task quickly and easily, the Lanier LF312 offers standard G3 faxing and 15 page-per-minute digital copying, as well as 15 page-per-minute printing via the Printer Option.

- Expect outstanding 600 dpi output quality for incoming fax documents, digital copies or printed files.
- With the optional Printer Controller, choose from PCL 5e, PCL 6 and PostScript 2 compatibility to ensure superior printing.



*The Lanier LF312 holds up to 850 sheets (with all options) for minimal reloading.*

## Exceptional efficiency

Whether you are faxing, copying or printing, the Lanier LF312 offers the convenient, time-saving features you need to complete your document tasks quickly and move on to more critical activities.

- Quickly distribute documents anywhere in the world with a 33.6 Kbps Super G3 Modem, featuring a 3.0 seconds-per-page transmission speed that helps minimize long-distance costs.
- Ensure flawless, unattended transmission of contracts, proposals and other large, multi-page documents with the 50-sheet Automatic Document Feeder, which achieves scan rates as fast as 2.8 seconds-per-page.
- With standard 8 MB fax memory (640 pages) and a 12-hour battery backup, mission-critical documents are stored if paper trays are empty or a power loss occurs.
- Memory Transmission enables users to scan fax documents, walk away with the originals, and allow the Lanier LF312 to take over. It waits for the line to be free if the fax was already in use, or redials if the receiver was busy — all without user intervention.
- Speed transmission even more with Parallel Memory Transmission, which dials and starts sending your fax as soon as you scan the first page.

## Intuitive, user-friendly operation

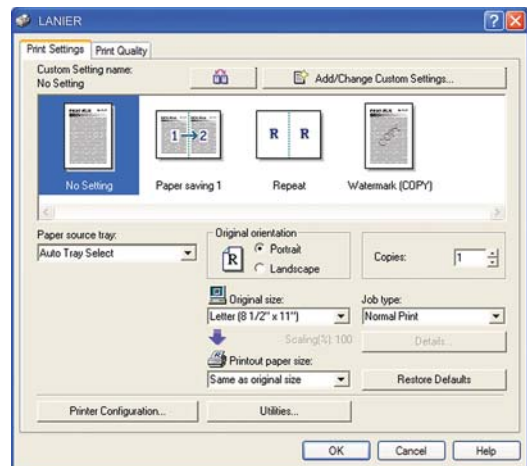
The Lanier LF312 features simple operation and straightforward design, so it is easy for users to navigate the system's wide variety of functions.

- Find exactly what you need with an easy-to-read Control Panel that guides you through any function.
- Simplify complex functions — such as transaction journal printing or duplex faxing — by assigning them to one of five programmable one-touch User Function Keys.
- Keep informed of the status of the Lanier LF312 at-a-glance with Status Indicator Lights. Green indicates a transmission or reception is in process, while red indicates a communication error or the need to replace paper or toner.
- Send fax documents to your most frequently called recipients with one-touch convenience using 30 Quick Dials and 100 Speed Dials.

## Compact, affordable design

In its relatively small footprint, the Lanier LF312 offers just as much versatility as many larger fax systems — yet it fits easily in space-restricted areas.

- Maximize productivity with a total paper capacity of up to 850 sheets (with all options).
- Reduce cost-per-page and simplify supply replacement with separate toner and developer units.



Expand functionality with the Printer Option.



Print or copy onto labels, overhead transparencies, postcards and other unique stocks with the 100-sheet Bypass Tray.

## Your Environmental Partner



Lanier continues its long-standing commitment to developing office solutions with environmentally friendly and superior energy- and supply-saving features, without compromising productivity, including:

- Power-Saving Sleep Mode
- Duplex and Combine Copy Modes
- Minimal Ozone Emissions
- Restriction of Hazardous Substances Compliant (RoHS)

## SPECIFICATIONS

### SPECIFICATIONS

<b>Type</b>	Desktop Facsimile
<b>Recording Method</b>	Laser
<b>ITU-T Compatibility</b>	Group 3 (V.34); ECM
<b>Modem Speed</b>	33.6 Kbps with Auto Fallback
<b>Maximum Transmit Speed</b>	3 seconds*
<b>Data Compression</b>	MH/MR/MMR/JBIG
<b>Scan Speed (standard resolution)</b>	2.8 seconds-per-page**
<b>Dual Access</b>	Standard
<b>Standard Document Memory</b>	8 MB (640 pages**)
<b>Optional Document Memory</b>	40 MB (1,500 pages**)
<b>AutoDialer</b>	30 Quick Dials, 100 Speed Dials, 5 Groups
<b>User Function Keys</b>	5 Dedicated Keys
<b>Document Memory Backup</b>	12 Hour (standard memory)
<b>Auto Document Feed Capacity</b>	50 sheets
<b>Maximum Document Width/Scan Width</b>	8.5"/8.4"
<b>Document Length</b>	23.7"
<b>Scan Resolution</b>	Standard: 200 x 100 dpi Detail: 200 x 200 dpi Fine: 200 x 400 dpi
<b>Halftone</b>	64 shades of gray with Error Diffusion
<b>Maximum Print Speed</b>	15 pages-per-minute
<b>Maximum Print Resolution</b>	600 dpi
<b>Resolution Enhancement</b>	Super Smoothing HQ**
<b>Maximum Recording Width</b>	8.4"
<b>Maximum Recording Paper Size</b>	8.5" x 14"
<b>Standard Paper Capacity</b>	250-sheet Cassette Tray 100-sheet Bypass Tray
<b>Optional Paper Capacity</b>	500 sheets
<b>LCD Display Size</b>	2 Lines (22 Characters)
<b>Power Consumption (without options)</b>	Energy Saver Mode: 1.2W and lower
<b>Power Requirements</b>	115 VAC, 60Hz
<b>Environment</b>	59 to 77°F, 30 to 70% RH
<b>Dimensions (WxDxH) (without options)</b>	17.6" x 19.5" x 16.2"
<b>Weight</b>	40.8 lbs. (without options)
<b>Optional PFU (WxDxH)</b>	17.0" x 16.1" x 5.5"
<b>Weight</b>	10.6 lbs.

### GENERAL FEATURES

Auto Collation  
Auto Document  
Auto Document Feeder  
Auto Start Initial Setup  
Clock With Auto Daylight Savings Time  
Direct Fax Number Entry  
Dual Access  
Energy Saver Mode  
Fax Number Entry Before Loading Document  
File List  
Group Dial  
Group Dial List Report  
Halftone with Error Diffusion  
Help on Demand  
Keystroke Programs  
Label Registration for Quick/Speed Dials  
LCD Prompts  
Memory Storage Report  
Ozone Emission-Free  
Personal Codes and Code List Report  
Pin Code Security  
Print Quick Dial Labels  
Program List Report  
Quick Dial Keys and Quick Dial List Report  
Remaining Memory Indicator

Resolution Control  
Restricted Access  
Scanner Cleaning Notification  
Specified Cassette Selection List Report  
Speed Dial Codes and Speed Dial List Report  
Telephone Connection  
Telephone Directory  
Usage Counter  
User Function List Report  
User Parameter List Report  
Wild Card

### COMMUNICATION FEATURES

Answering Machine Interface  
Automatic Fax/Tel Change  
AI Redial  
Busy Tone Detection  
Chain Dialing  
Communication Failure Report  
Distinctive Ring Detection  
Error Correction Mode  
Error Report  
Monitor Speaker  
On Hook Dialing  
Power Failure Report  
Pulse/Tone Selection  
Redial (Auto/Manual)  
Shortened Protocol

### TRANSMISSION FEATURES

Batch Transmission  
Blank Document Detection  
Closed Network  
Confidential Transmission with ID  
Fax Header (TTI)  
Forwarding  
Immediate or Memory Transmission  
Label Insertion  
Memory Transmission Immediate Stop  
Memory Transmission Result Report  
Page Count  
Page Retransmission  
Quick (Parallel) Memory Transmission  
Send Later  
Serial Broadcasting (Immediate and Later)  
Transmission Confirmation Report  
Transmission Result Report

### COPY FEATURES

Copy up to 99 copies  
Copy at 15 pages-per-minute

### RECEPTION FEATURES

Authorized Reception  
Auto or Manual Reception  
Closed Network  
Confidential Reception with ID  
Confidential Reception Report  
Continuous Polling  
Document Separation Mark (Checked)  
Memory Lock (All or By Address)  
Multi-Polling Reception  
Page Separation & Length Reduction  
Poll Later  
Polling Reception (With and Without ID)  
Reception Mode Selection (Auto/Manual)  
Reception Time Printing  
Specified Cassette Selection  
Substitute Reception

### PRINTER FEATURES

#### (Optional with Printer Interface)

15 ppm at 600 dpi with Edge Smoothing  
Bi-Directional Parallel Port  
Collated Printing  
Font Download  
Network Connectable (Requires Opt. NIB)(Ethernet)  
Network OS  
- Novell NetWare 3.x, 4.x, and 5.x  
- MS Windows 95/98/Me/NT 4.0/2000/XP/Vista\*\*\*  
- Mac OS 8.x, 9.x, and X (Mac OS X (Classic) is supported)  
PCL 5e/6 Compatibility  
- MS Windows 95/98/Me/NT 4.0/2000/XP/Vista\*\*\*  
PostScript 2 Compatibility (Optional)  
- MS Windows 95/98/Me/NT 4.0/2000/XP/Vista\*\*\*  
- Macintosh Driver  
Printer Driver Features  
- Custom Paper Size  
- Layout  
- Page Protect  
- Page Order\*\*\*\*  
- Paper Selection  
- Slip Sheet\*\*\*\*  
- Toner Saver  
- User ID  
- User Code  
- Watermarks  
Resident Fonts  
- PCL Fonts = 10 TrueType / 35 Intellifonts  
- PS Fonts = 80 (Only available with PS2 Opt.)  
- 10/100 Base-T Network Interface Board (Opt.)

### OPTIONS

Feature (Memory) Expander Card Type 300 (40 MB) (non volatile)  
Printer Interface Type 1013 (see Printer Features)  
Telephone Handset Type 1018  
Type 1018 PS2 Compatible Kit  
10/100 Base-T Network Interface Board Type 1018  
32 MB/64 MB/128 MB Printer Memory  
500-sheet Paper Feed Unit

\*Approximately 3 seconds-per-page at 33.6 Kbps is dependent on optimal line quality, and customer performance may vary by location. Current systems used by the Public Switched Telephone Network (PSTN) generally support 28.8 Kbps modem speeds or lower.

\*\*Based on ITU-T Test Chart #1 in standard resolution.

\*\*\*Windows Vista will be available after launch. Please check our website for release dates.

\*\*\*\*Not available for PS2/Macintosh

