

LANIER

MP 501SPF/ MP 601SPF

Multifunction B&W

- ✓ Printer
- ✓ Copier
- ✓ Facsimile
- ✓ Scanner



MP 501SPF

52 ppm monochrome

MP 601SPF

62 ppm monochrome

Find out more about our versatile multifunction B&W products. This system could fit your needs.

The ideal combination of convenience and productivity

The old adage “knowledge is power” has a new twist. It’s only true if you can share that knowledge with others quickly and securely — in the format they prefer. Use the LANIER™ MP 501SPF/MP 601SPF to print forms, invoices and a wide range of document types at high speeds, copy important meeting notes, scan full-color images and brochures and fax or distribute information in digital format to anybody, anywhere with a tap of your finger. It all begins with our Workstyle Innovation Technology. Take advantage of an eye-catching, full-color interactive Smart Operation Panel touchscreen to set shortcuts and access important details, so you can be more productive and informed. Want more mobility? Print and scan remotely via your smartphone or tablet. Need more security? Take advantage of user authentication to track users, projects and costs. Worried about space? Place this compact device anywhere, from a small office to a larger shared-use environment.

- Print up to 62 ppm for productive black-and-white output
- Use intuitive touchscreen controls for easy multifunction operation
- Customize your own workflows and add shortcuts to simplify tasks
- Print and distribute information remotely from your personal mobile device
- Reduce operating costs via a wide range of eco-friendly features



Multitask at a faster pace in less space

Perform everyday tasks with speed and convenience

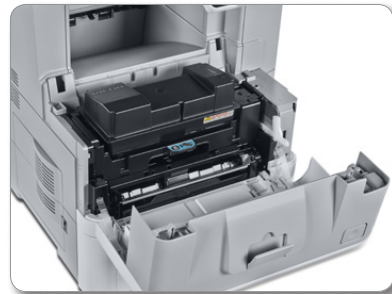
Find the perfect fit for your office

Your workload isn't getting any smaller, even if your deadlines and office space are shrinking. Introducing the compact MP 501SPF/MP 601SPF, a fully featured multifunction printer designed specifically for midsize workgroups that manage a wide range of document tasks. Print and copy up to 8.5" x 14" documents and scan originals from a versatile device that can be placed almost anywhere. Or, place it in shared-use settings — including PC, Mac and host printing environments — to improve everyday workflows. Take advantage of extensive fax capabilities to transmit important contracts and other documents digitally and avoid typical transmission costs. In fact, faxes can be sent directly to your email inbox, so you don't have to repeatedly check for received faxes at the device.



Be more productive with everything you do

Every day brings something different. Be ready for all of it with the MP 501SPF/MP 601SPF. Print a wide range of documents at up to 62 pages per minute and transition between jobs quickly. Copy handwritten notes clearly with sharp lines and precise text up to 1200 x 1200 dpi. Scan black-and-white or full-color originals and share them immediately with a host of Scan-to capabilities. Add optional paper trays to extend paper capacity up to 2,600 sheets for fewer interruptions. Besides toner replacement, the device is designed specifically to be almost maintenance free, so you can spend less time replenishing supplies and more time on accomplishing tasks.



Keep moving, keep working

Being out of the office shouldn't keep you out of the loop. With the Smart Device Connector app, you can use your Android or iOS smartphone or tablet to access, manage and move information easily. Connect directly to the MP 501SPF/MP 601SPF with Near Field Communication (NFC), Bluetooth or by scanning the QR code displayed on the control panel. Grab information from your personal device or favorite Cloud application and print it without utilities, software or drivers. Share digital files from the multifunction device just as easily. Scan originals, send them to your phone and share them with recipients in your personal address book via a wide range of Scan-to capabilities almost instantly. You can even carry your work with you by printing from or scanning to a USB/SD card that can be plugged directly into the device.



Make your work more personal

Put your own touch on every project

Take advantage of what you know to simplify how you work. Use Workstyle Innovation Technology to customize the user interface with one-touch workflows and shortcuts that help you complete jobs faster with more accuracy. Begin basic functions, such as copying and printing, with one-touch controls. Choose from a wide range of embedded apps to simplify more complex workflows. Each app includes critical selections for specific jobs so you can make smarter workflow decisions. Make adjustments instantly with a swipe or tap. Do you distribute the same reports regularly? Create a workflow shortcut that automates many of the manual steps, so you can save time by reducing redundant entries on the touchscreen. You can even download additional apps from our Application Site and place them on the Home Screen as information-displaying widgets. You can



Find everything you need in one place

The less time you spend searching for information, the more time you have to use it to your advantage. The MP 501SPF/MP 601SPF features an impressive 10.1" touchscreen operational panel that gives you immediate access to every detail — including settings, usage, administrative controls, scan-to recipients, workflows and much more — available at your fingertips with a single swipe, flick or tap. All hard keys have been removed, so you can toggle between jobs and tasks using the same familiar controls you use on your smartphone or tablet. Customize the user interface to simplify navigation via intuitive drag-and-drop workflow icons and find critical information immediately. The MFP even includes an embedded web browser, so you can access web pages directly from the Internet and print them as PDFs.



Make productivity simple

Make your workday more personal, while doing less of the work. Use the MP 501SPF/MP 601SPF to perform a wide range of document management tasks automatically. Click on the ID Card Copy app to scan both sides of drivers' licenses, insurance cards and other forms onto a single side of a sheet of paper for easier viewing. Opt for embedded Optical Character Recognition (OCR) scanning, so you can place metadata on images and PDF files and retrieve them quickly via keyword searches. You can also store frequently used documents locally on the embedded hard disk drive, find them in the Document Server and release them with a single tap for on demand printing. Pair the MFP with your choice of workflow software, including Streamline NX and Device Manager NX for tracking and authentication, to maximize automation and expedite workflows even more.



Be the one responsible for improving workflow

Take charge of security controls

With user authentication, you're always in control of your most sensitive information. Users can log into the device via passcode or billing code — or by passing an identity card by the optional NFC card reader. You can track each user and all output remotely. You can set print quotas. You can even issue chargebacks to specific workgroups or individuals when you add optional accounting software such as Device Manager NX Accounting. Use the Locked Print function to prevent documents from being left unattended in the output tray. Release them only after the authorized user authenticates at the device. For even more security, the hard disk drive provides powerful encryption and the built-in DataOverwriteSecurity System (DOSS) overwrites any latent images left on the hard drive.



Conserve your energy and paper

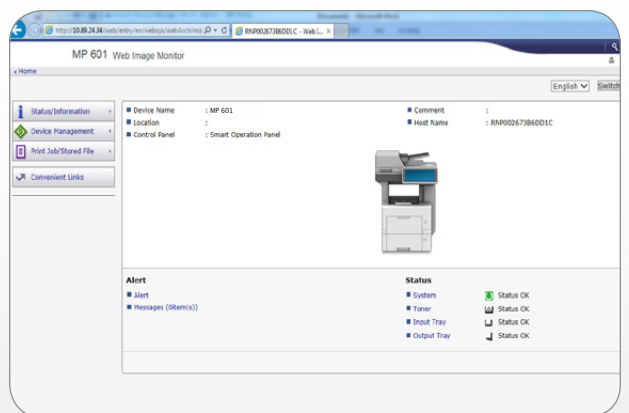
Some things are out of your control. Fortunately, there's the MP 501SPF/MP 601SPF with its wide range of eco-friendly, energy-saving features to reduce Typical Electricity Consumption (TEC) for you. For example, Sleep Mode reduces energy usage when the MFP is unused for extended periods. Or, you can program the device to turn on and shut down at predetermined times to conserve energy for even greater savings. Want to reduce paper costs? Set duplex printing as the default, even for legal-sized paper. It's also EPEAT® Silver rated* and is ENERGY STAR® certified.

*EPEAT Silver rating is applicable only in the USA.



Perform administrative tasks from anywhere

Be proactive to stay productive. Perform a wide range of administrative tasks remotely. With Device Manager NX or Web Image Monitor, you can monitor usage, configure the device and add updates from anywhere via a web browser. When you need to update print drivers, simply install Device Software Manager and automate the process in only moments. Collect important device details and automate service calls with @Remote. Monitor the device in real-time, automatically collect meter readings and take advantage of automated service alerts to react quickly. When you need outside help, give our trained technicians a call. We can even access your user interface remotely to expedite troubleshooting.



Everything you need for everyday tasks

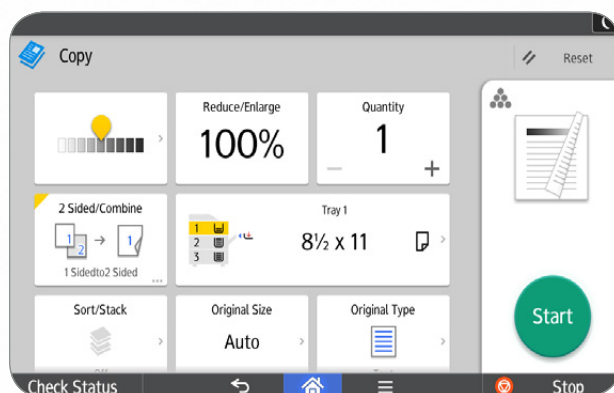


- 1 Base System:** Take your pick between 52- or 62-pages-per-minute output speeds. Both offer 1200 x 1200 dpi resolution for crisp, clear output every time.
- 2 Full-Color 10.1" Super VGA Smart Operation Panel:** Jump from one job or task to the next with ease by using familiar touchscreen interactions to navigate menus, check settings and initiate jobs.
- 3 Automatic Reversing Document Feeder:** Make copies or send faxes in seconds with the convenient Document Feeder. Or, load up to 75 single-sided or double-sided color or black-and-white originals for fast and easy scanning.
- 4 Standard Paper Tray:** Load up to 500 sheets of paper — up to 8.5" x 14" — with the Standard Paper Tray.
- 5 Paper Feed Units (Optional):** Add up to four 500-Sheet drawers and expand your paper capacity up to a whopping 2,600 sheets for longer runs and fewer reloads.
- 6 Duplex Unit:** Reduce paper usage by copying and printing on both sides of each sheet of paper.
- 7 Bypass Tray:** Use a wider selection of media stocks and feed paper up to 59 lb. Bond (220 g/m²) through the 100-Sheet Bypass Tray.
- 8 USB & SD Card Slots:** Carry your work with you by printing from or scanning to a USB/SD card that can be plugged directly into the device.
- 9 500-Sheet Paper Exit Tray**

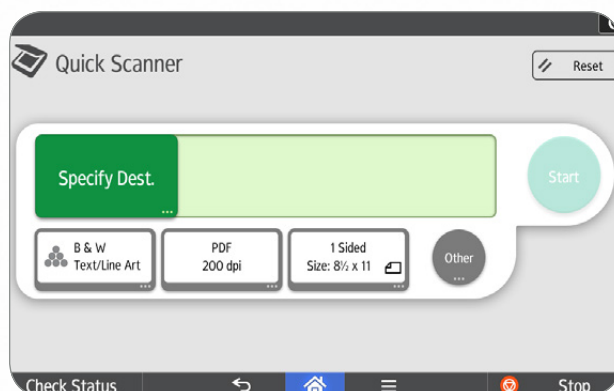
Tap into a whole new way to work

Use Workstyle Innovation Technology to integrate multiple processes and streamline complex tasks to fit your workstyle. Each display option offers a common platform shared with other Lanier smart operation panel-equipped devices that includes touchscreen controls on an impressive 10.1" Super VGA Smart Operation Panel.

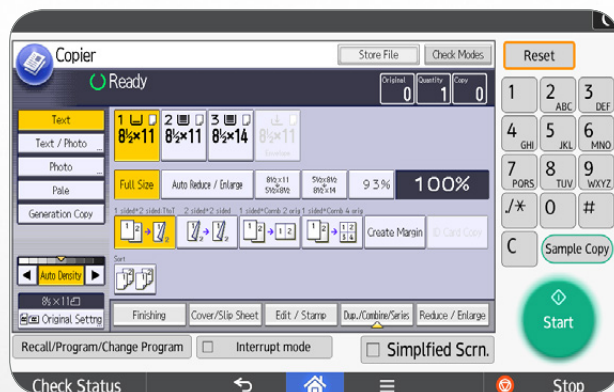
New User Interface: This intuitive, easy-to-navigate user interface is set up in a grid layout, so information can be accessed dynamically. Use the familiar swipe scrolling and pinch-and-flick movements found on most of today's touchscreens to perform your tasks in seconds. Take advantage of its built in "Cloud solution ready" capabilities. You can even choose which shortcut workflows you want to place on the Home Screen.



Quick User Interface: At times, almost every user needs just basic printing, copying, scanning or faxing at an MFP. Access each with a single touch from the Quick User Interface. To perform more unique functions, such as ID Card Copy or Scan-to-Folder Helper, you can place these shortcuts on the Home Screen. Just tap it to get started.



Classic (Legacy) User Interface: Not ready for a new touch panel design? Don't worry — you're covered. You can still use the legacy Lanier user interface on the new touchscreen. Just tap its icon on the Home Screen and begin working with the familiar display you are accustomed to.



To view detailed features of our multifunction B&W products online go to www.lanier.com/products

Lanier MP 501SPF/MP 601SPF

SYSTEM SPECIFICATIONS



Engine/Copier Specifications

Configuration	Desktop
Technology	B&W laser electro-photographic printing
Toner Type	Dry, mono component
Copy Resolution	600 x 600 dpi
Maximum Copy Quantity	Up to 999
Control Panel	10.1" Smart Operation Panel
B&W Copy/Print Speed (Letter)	MP 501SPF: 52 ppm MP 601SPF: 62 ppm
Maximum Monthly Volume	MP 501SPF: 16,600 prints MP 601SPF: 16,600 prints
Duty Cycle	MP 501SPF: 250,000 prints MP 601SPF: 275,000 prints
First Copy/Print Out Time	6 seconds or less
Warm-up Time	MP 501SPF: 24 seconds MP 601SPF: 25.4 seconds
Memory (Standard/Maximum)	2 GB RAM + 320 GB Hard Disk Drive
Original Type	Sheets/Books
Maximum Original Size	8.5" x 14" (216 x 356 mm)
Standard Paper Capacity	1 x 500-Sheet Tray + 100-Sheet Bypass Tray
Maximum Paper Capacity	2,600 sheets
Standard Output Capacity	500 sheets (LT)
Supported Paper Sizes	Paper Tray: 4.13" x 5.83" – 8.5" x 14" Bypass Tray: 2.76" x 5.83" – 8.5" x 14" Optional Trays: 3.62" x 6.38" – 8.5" x 14"
Supported Paper Weights	Standard Tray, Optional Trays and when Duplexing: 17 – 32 lb. Bond/66 lb. Index (64 – 120 g/m ²) Bypass Tray: 16 – 59 lb. Bond/122 lb. Index (60 – 220 g/m ²)
Supported Paper Types	Plain, Thin, Middle, Thick, Recycled, Colored, Special, Letterhead, Preprinted, Bond, OHP (Transparency)*, Label*, Envelopes**
Document Feeder Type	Automatic Reversing Document Feeder
Document Feeder Original Size	8.5" x 14" (216 x 356 mm)
Document Feeder Paper Weight	13 – 20 lb. / 44 Index (50 – 80 g/m ²)
Document Feeder Capacity	75 sheets
Preset Reduction & Enlargement Ratios	65%, 78%, 93%, 100%, 129%, 155%
Zoom Range	25% to 400% in 1% increments
Standard Features	Auto Paper Selection, Auto Start, Auto Tray Switch, Combine Copy, Directional Magnification, Duplex, Electronic Sort, ID Card Copy, Image Density Adjustment, Image Quality Mode, Interrupt Copy, Memory Copy, Series Copy, User Program, Import/Export of Preference Settings, Centralized Address Book Management
Dimensions (WxDxH)	18.7" x 19.84" x 25.39" (475 x 504 x 645 mm) (mainframe)
Weight	61.6 lbs. (28 kg)
Power Consumption (Operating)	MP 501SPF: 740 W MP 601SPF: 774 W
Power Consumption (Sleep Mode)	1.1 W
Typical Electricity Consumption (TEC)***	MP 501SPF: 3.0 kWh/week MP 601SPF: 3.8 kWh/week
Power Requirements	120 V, 60Hz, 15A
ENERGY STAR	Certified
EPEAT	Silver Rated

*From Bypass Tray only.

**From Bypass Tray and Optional Paper Trays

***Typical Electricity Consumption by ENERGY STAR program.

Printer Specifications (Standard)

Processor Speed	1.46 GHz
Print Resolution	Up to 1200 x 1200 dpi
Connection Type	Standard: Gigabit Ethernet (1000/100/10BASE-T), USB 2.0 Type A x 2, SD Card Slot x 2 Optional: Wireless LAN IEEE802.11a/b/g/n, Bluetooth, USB 2.0 Type B, IEEE1284, NIC 2 Port (Print Server)
Printer Languages	Standard: PCL5e/6, Genuine Adobe® PostScript®3/PDF Direct Print Optional: XPS

Font Support

PCL: 45 fonts + 6 Bitmapped fonts + 13 International fonts PostScript3/136 fonts

Network Protocols

TCP/IP (IPv4, IPv6), SMTP (sending email), SMB/FTP (scan-to-folder), Web services on devices for scanning

Supported Operating Systems

Windows® Vista/7/8/8.1/10/Server2003/Server 2003R2/Server 2008/Server 2008R2/Server 2012/Server 2012 R2, CPS/XenApp PCL/PS only; Mac OS X (10.7 or later) PS only; UNIX Sun Solaris 9/10, HP-UX 11.x, 11i v2, 11i v3, Red Hat Linux Enterprise V4/V5/V6, SCO OpenServer 5.0.7/6.0, IBM AIX V5L/V5.3/V6.1/V7.1; SAP R/3

Device Management Software/Utilities

Device Software Manager, Web Image Monitor, Streamline NX, GlobalScan NX, Scan CX, Enhanced Locked Print NX, FlexRelease NX, Card Authentication Package, Remote Communication Gate Type S, Remote Communication Gate Type A, @Remote Connector NX, Device Manager NX Lite/Accounting/Pro/Enterprise, Printer Driver Packager NX Lanier Smart Device Connector, Lanier App for Google Cloud Print, Airprint Eco-Friendly Indicator, PDF Direct Print, Mail to Print, Classification Code, Bonjour Support, Windows Active Directory Support, DDNS Support, PCL Resident Font Adoption, Tray Parameter Change from Web Image Monitor, 1200 dpi Support, Universal Driver, XPS Support, WS Printer, Wireless LAN Interface Option, Media Direct Print (Print from USB/SD), Banner Page Print, Auto Job Promotion, Poster Print, WPS Support, Sample/Locked/Hold/Scheduled/Store Print/Store and Print

Mobile Print

Other Print Features

Scan Specifications (Standard)

Scan Speed (B&W & Full Color)	B&W: Up to 62 ipm Simplex/Up to 27 ipm Duplex (Letter, A4) Full Color: Up to 42 ipm Simplex/Up to 18 ipm Duplex (Letter, A4) Full Color & B&W: Up to 600 dpi Up to 8.5" x 14"
Scan Resolution	MFP must be connected via 10/100/100 Base-TX Ethernet (standard) or IEEE 802.11 a/b/g/n Wireless Interface (optional) for network TWAIN scanning and Scan-to-modes. Standard Scan-to-USB/SD Cards via control panel.
Platen Size	TCP/IP, SMB, SMTP, FTP, WSD Scanner
Connection Type	B&W: TIF (MH, MR, MMR, JIGB2), Grayscale Full Color: JPEG B&W: Text, Text/Line Art, Text/Photo, Photo, Grayscale Full Color: Text/Photo, Glossy Photo, Auto Full Color Select

Protocol Compression Method

Scan Mode

File Formats

Standard Features

Facsimile Specifications

Circuit	PSTN, PBX
Compatibility	ITU-T (CCITT) G3
Resolution	200 x 200/100 dpi
Compression Method	MH, MR, MMR, JBIG
Scanning Speed (SEF)	B&W: 62 ipm Simplex/27 ipm Duplex (Letter) @ 300 dpi 33.6 Kbps with auto fallback G3: 3 seconds per page (MMR Compression) G3: 2 seconds per page (JBIG Compression)
Modem Speed	4 MB (Approx. 320 pages)
Transmission Speed	2,000
SAF Memory	100 (max. 500 numbers per group)
Max Auto Dials	
Group Dials	

Standard Features

One Hour Backup, Detection of Misplaced Document, Double-Check Destination Address, IP Fax (T.38), Internet Fax (T.37), Forward to Email/Folder, Paperless Fax, LAN Fax, LDAP Support, Universal Send (Simultaneous Fax and Scan), Remote Fax, Fax Output Timer

Document Server (Standard)

Maximum Stored Documents	3,000 documents
Maximum Pages per Document	1,000 pages
Password-Protected Folder Management	Up to 200 folders

Security Features

Address Book Encryption, Authentication, Password Encryption, HDD Data Encryption & Overwrite, IP Address Filtering, IP Sec Communications, Kerberos Support, Locked Print, Network Protocol ON/OFF, Quota Setting/Account Limit, Scan-to-Web Mail (SMTP over SSL), Secure Socket Layer (SSL), Secure Shell Encryption (SSH), S/MIME, Transport Layer Security (TLS), User Authentication (Windows, LDAP, Basic, User Code, 802.1x Wired), Unauthorized Copy Prevention (Print), Wireless LAN WEP/WPA

Controller Options

Extended USB Board Type M19	
IEEE 1284 Interface Board Type M19	
Wireless LAN Card Type M24 (IEEE802.11a/b/g/n)	
XPS Direct Print Option Type M24	
DataOverwriteSecurity Unit Type M19	
File Format Converter Type M19	
NFC Card Reader Type Type M24	
OCR Unit Type M13	
Optional Counter Interface Unit Type M12	
Fax Connection Unit Type M24	

Hardware Options

Paper Feed Unit PB1100	
Paper Capacity	500 sheets
Supported Paper Sizes	3.62" x 6.38" – 8.5" x 14"
Supported Paper Weight	17 – 32 lb. Bond/66 lb. Index (64-120 g/m ²)
Dimensions (WxDxH)	15" x 16.1" x 4.8" (380 x 410 x 121 mm)
Weight	8.8 lbs. (4 kg)

Caster Table Type M24

Required when three (3) or four (4) optional Paper Feed Units are installed.	
Dimensions (WxDxH)	With Stabilizers: 30.6" x 31.8" x 2.5" (778 x 808 x 64 mm) Without Stabilizers: 15" x 16.1" x 2.5" (380 x 410 x 64 mm)
Weight	24.2 lbs. (11 kg)

Tall Cabinet Type 1

Recommended for the base unit for a floor-standing configuration.	
Dimensions (WxDxH)	15" x 16.2" x 20" (381 x 412 x 508 mm)
Weight	22.5 lbs. (10.2 kg)

Medium Cabinet Type J

Recommended when one (1) or two (2) additional Paper Feed Units are added for a floor-standing configuration.	
Dimensions (WxDxH)	15" x 16.2" x 10" (381 x 412 x 254 mm)
Weight	13.7 lbs. (6.2 kg)

Consumables & Yields

Black Print Cartridge MP 601 (includes Waste Toner Bottle)	25,000 pages*
Feed Roller MP 601 (for mainframe)	500,000 pages
Feed Roller MP 601PB (for PFU)	500,000 pages

*Declared yield values in accordance with ISO/IEC 19752. Actual yields may vary based on images printed and other factors.

The Lanier MP 501SPF/MP 601SPF ships with a starter Print Cartridge that yields 10,000 pages.

For maximum performance and yield we recommend using genuine Lanier parts and supplies.

Specifications subject to change without notice.