



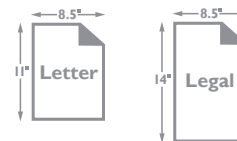
Simply a SMARTER Way to Work



MFX-3530



MFX-3510

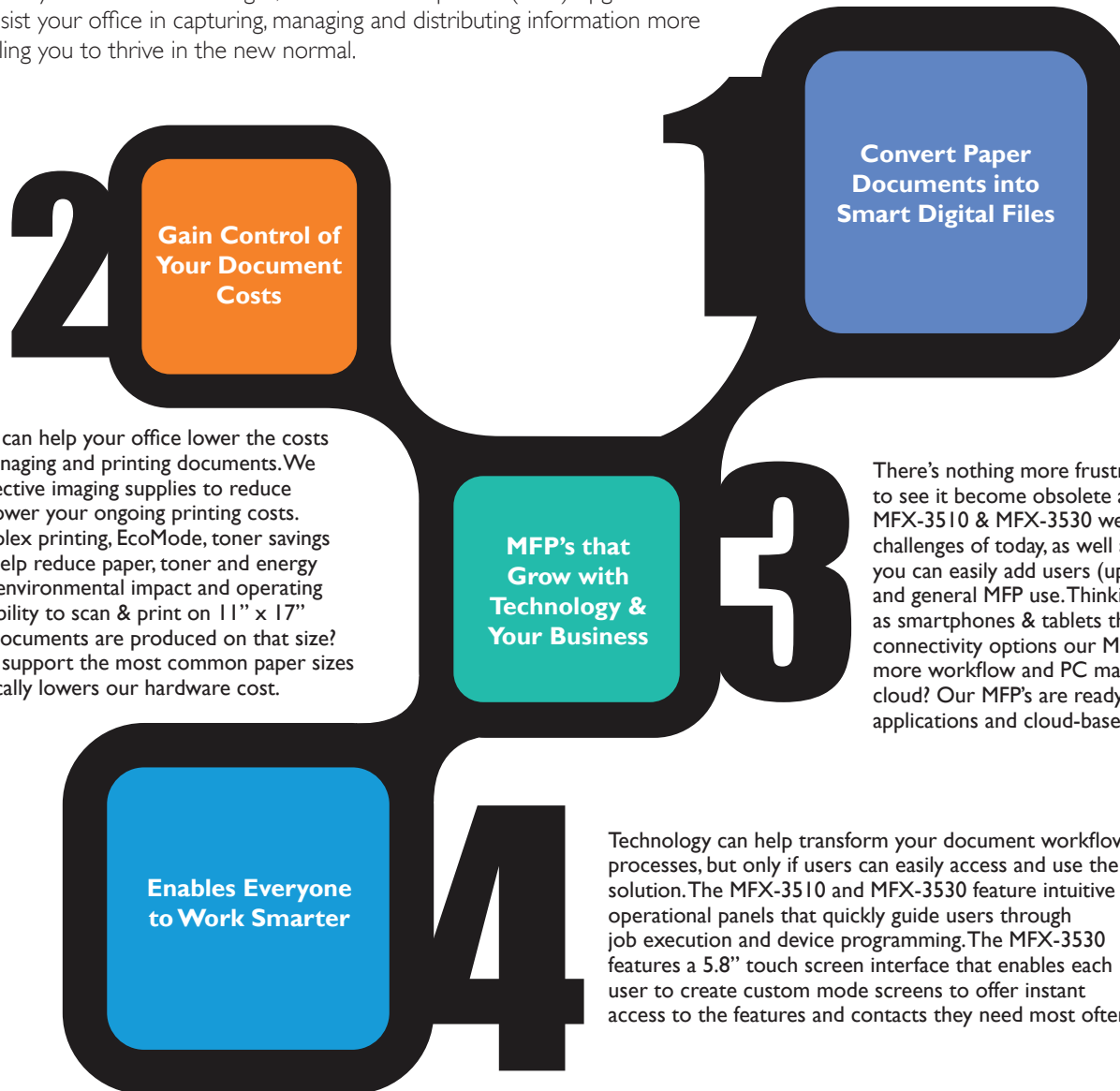


BUSINESS-CLASS DOCUMENT SOLUTIONS

muratec

How Can the Muratec MFX-3510 & MFX-3530 Help Your Office Work Smarter?

Your business is transforming. Your role, expanding and evolving. Doing more with less isn't just a passing trend, it's the new normal. Despite these challenges companies must maintain exceptional customer service levels, meet project deadlines and process information into systems that conform to new regulations and guidelines. While we can't address all of your business challenges, a multifunction printer (MFP) upgrade from Muratec can assist your office in capturing, managing and distributing information more efficiently, enabling you to thrive in the new normal.



The MFX-3510 & MFX-3530 can help your office lower the costs associated with capturing, managing and printing documents. We start with high-yield, cost-effective imaging supplies to reduce replacement frequency and lower your ongoing printing costs. Standard features such as duplex printing, EcoMode, toner savings mode and multi-up printing help reduce paper, toner and energy consumption to lessen both environmental impact and operating costs. And why pay for the ability to scan & print on 11" x 17" when less than 3% of office documents are produced on that size? The MFX-3510 & MFX-3530 support the most common paper sizes (letter / legal) which dramatically lowers our hardware cost.

Utilize the MFX-3510 and MFX-3530 to quickly turn your paper documents into electronic files that can be e-mailed, stored in a PC folder, faxed or transferred to a cloud-based storage/workflow system. Create smarter documents by including processing instructions with your outbound e-mail, add indexing information to automatically archive your file into a document management system or utilize Muratec's ScanDocs® software to create electronic documents that can be instantly retrieved from your PC.

There's nothing more frustrating than investing in technology, only to see it become obsolete as your business needs change. The MFX-3510 & MFX-3530 were designed to meet the business challenges of today, as well as tomorrow. As your company grows you can easily add users (up to 100 per device) for scanning, printing and general MFP use. Thinking about deploying mobile devices such as smartphones & tablets throughout your business? With wireless connectivity options our MFP's can print from these devices. Moving more workflow and PC management (terminal services) to the cloud? Our MFP's are ready to support a variety of terminal services applications and cloud-based workflow and management applications.

Technology can help transform your document workflow processes, but only if users can easily access and use the solution. The MFX-3510 and MFX-3530 feature intuitive operational panels that quickly guide users through job execution and device programming. The MFX-3530 features a 5.8" touch screen interface that enables each user to create custom mode screens to offer instant access to the features and contacts they need most often.



Let's Turn Your Paper Documents into Smart Digital Files

The MFX-3510 and MFX-3530 feature a high-resolution (600 x 600 dpi) color scanner that can quickly capture your paper documents and convert them into digital files. Once converted, these documents can be delivered to e-mail addresses, PC folder locations (local PC or network storage), FTP locations and/or USB flash drives.

Increase efficiency by pre-registering locations into the address book to gain instant access to the e-mail addresses, PC folders and fax numbers you send to frequently.

Want to customize the file name, add processing instructions in the e-mail body or create a metadata file to enable seamless indexing into your document management system? With the MFX-3530 these functions can be quickly performed to make document scanning even more efficient.



Additional scanning features:

- Scan monochrome documents at up to 40 images-per-minute or color documents at up to 27 images-per-minute. (MFX-3530 scanning speeds)
- Automatically capture two-sided originals using the patented duplexing automatic document feeder (DADF) found on the MFX-3530.
- Documents can be converted into TIFF, PDF or JPEG file formats.
- Up to (1,000) e-mail addresses and (300) PC folder shortcuts can be registered into the address book for instant access.
- Create smart documents on the MFX-3530 using the optional ScanTag® metadata capture feature. With ScanTag®, users can add multiple lines of metadata that can enable automatic indexing into a variety of popular document management solutions.
- Available for the MFX-3530, DirectScan® enables users to scan documents directly into PC folders without having to install any additional hardware or software connectors.



Complete Document Solutions

Faxing Solutions



- Business-class fax solutions include a blazing-fast 33.6 Kbps modem, 1,000 location address book, transmission archiving (for auditing), fax forwarding to e-mail / PC folders and transmission confirmation reporting.
- The MFX-3510 & MFX-3530 can integrate with a variety of popular fax server applications utilizing the optional e-mail gateway feature.
- Intuitive fax driver enables you to send faxes directly from a PC application. Easy access to your MFP address book, customizable cover pages and multi-location broadcasting is supported.

Document & Device Security Solutions



- Documents that are printed using the secure print feature are stored within machine memory for up to 24 hours. After 24 hours they are automatically wiped from the machine memory. No other documents are stored in the machine's memory.
- Machine settings can be quickly backed-up and restored by the IT administrator.
- Route inbound fax documents to an e-mail address or PC Folder.
- Require user log-in prior to gaining machine access.
- Create secure PDF's that require password entry prior to viewing (MFX-3530).
- Create an audit trail of device communication to record the details of outbound fax and e-mail transmissions (Muratec exclusive feature).

User-Friendly Operations



- The MFX-3510 features an intuitive 5-line LCD interface, 48 one-touch buttons for instant fax/e-mail transmissions and easy-to-navigate menus.
- The MFX-3530 features a 5.8" monochrome touchscreen that enhances the user experience.
- The MFX-3510 & MFX-3530 were designed with the busy workgroup in mind, meaning users can quickly and easily replenish paper cassettes, change toner & drum cartridges, clear paper jams and execute machine operations.
- The optional 2-bin output tray can separate print, copy or fax documents to create distribution-ready output.
- The My MFP mode enables each machine user to create a custom home screen that displays the features they most frequently access.
- Users can insert both letter & legal size documents into the document feeder and the device will correctly identify each size and produce output on the appropriate paper size (assuming both paper sizes have been loaded into the cassettes).

Printing Solutions



- Up to 37 page-per-minute output speed.
- Standard PCL5 / XL enables printing compatibility with a majority of operating systems and applications (Windows, UNIX, SAP,AS/400).
- Optional PostScript 3 printing enables compatibility with Macintosh operating systems.
- Up to (3) optional paper cassettes can be added to the MFX-3530 to provide high-volume print environments with additional paper capacity and instant access to multiple paper types when printing.



Mobile Print Solutions



Color Scanning



Intuitive Operation



Professional Document Output

MFX-3510 / MFX-3530 Configuration



BASE CONFIGURATION



MFX-3510

- 37 page-per-minute printing
- 80-sheet automatic document feeder
- Duplex printing
- 500-sheet paper cassette
- 100-sheet bypass tray
- 5-line LCD interface
- Ethernet & USB connectivity
- PCL 5e / XL printing
- Color scan to e-mail, folder, FTP & USB

MFX-3530

- 37 page-per-minute printing
- 80-sheet *duplexing* automatic document feeder (DADF)
- Duplex printing
- 500-sheet paper cassette
- 100-sheet bypass tray
- 5.8" touchscreen interface
- Ethernet & USB connectivity
- PCL 5e / XL printing
- Color scan to e-mail, folder, FTP & USB

PAPER OPTIONS



MFX-3510 + 3510CAB

- Paper cabinet includes area for paper, supply and manual storage, as well as locking wheels for portability and stability.

MFX-3510 + 3510CAS + 3510CAB

- Paper capacity of 1,100-sheets (maximum for MFX-3510)
- Paper cabinet includes area for paper, supply and manual storage, as well as locking wheels for portability and stability.

MFX-3530 + 3510CAB

- Paper cabinet includes area for paper, supply and manual storage, as well as locking wheels for portability and stability.

MFX-3530 + 3510CAS + 3510CAB

- Paper capacity of 1,100-sheets
- Paper cabinet includes area for paper, supply and manual storage, as well as locking wheels for portability and stability.

MFX-3530 + (2) 3510CAS + 3590CAB

- Paper capacity of 1,600-sheets
- Small paper cabinet includes area for paper and manual storage, as well as locking wheels for portability and stability.

MFX-3530 + (3) 3510CAS + 3590CAB

- Paper capacity of 2,100-sheets (maximum capacity for MFX-3530)
- Small paper cabinet includes area for paper and manual storage, as well as locking wheels for portability and stability.

PRINTING OPTIONS



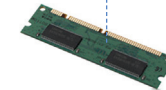
PostScript3 (PS750)

- The PS750 can be added to enable compatibility with Macintosh operating environments or specialty print applications.
- Features PDF Direct printing application that enables drag-and-drop PDF printing.
- PS3 enables printing from the following Linux environments:
 - RedHat 3-5, 9
 - SUSE 10.1 - 10.3, 11
 - Fedora 4-10



Barcode Printing (BC750)

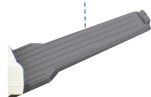
- The BC750 enables the printing of barcodes including UPC/EAN, Interleave25, Code 39, Code 126, PostNet and more.



PostScript3 Memory Expansion (PSMEM750)

- 1 GB memory expansion increases PostScript printing performance for specialty printing applications.
- This option is strongly recommended if using the PDF Direct printing feature.

MISCELLANEOUS OPTIONS



2-bin Output Tray (35102BN)

- Side output tray separates print, fax or copy jobs from printing in the primary output tray.
- 2-bin tray capacity is 150-sheets.

MURATEC OPTION

Mechanical Counter (DA7664)

- Quickly access machine print counts using this hard counter.

MURATEC OPTION

Stamp Kit (3530STAMP)

- This scan stamp places a small stamp on each scanned page to insure that it was scanned.
- Available on the MFX-3530 only.



Wireless Connectivity Option (SX600)

- Use this option to connect your MFP wirelessly to a network.
- Assists with mobile printing applications.

MFX-3510 / MFX-3530 Specifications

GENERAL

Print Speed (Simplex)	37 pages-per-minute
Print Speed (Duplex)	10 pages-per-minute
User Interface (3510 / 3530)	5-line LCD / 5.8" Touch Screen
Document Feeder Capacity	80-sheets
Duplexing Automatic Document Feeder	MFX-3530 only
Standard Paper Capacity	600-sheets (includes 100-sheet bypass tray)
Maximum Paper Capacity (3510 / 3530)	1,100 / 2,100 sheets
Cassette Paper Weight	20 - 28 lb.
Paper Loading (Cassette)	Face Up
Bypass Paper Weight	20 - 43 lb.
Paper Loading (Bypass)	Face Down
Output Tray Capacity	250-sheets
Output Position	Face Down
Duplex Printing	1:2, 2:2
Dimensions (H x W x D) Weight (3510)	18.9" x 21.4" x 20.19" / 48.5 lbs.
Dimensions (H x W x D) Weight (3530)	18.9" x 21.4" x 20.03" / 53.13 lbs.
DHCP Compliant	Yes (Default On)
Ethernet Connection	Standard 10/100 Base-T, RJ-45 connection
Network Protocol	TCP/IP
Local Connection	Standard USB 2.0
System Memory	512 MB
Toner Yield	24,000 @ ISO 19752
Drum Yield	60,000

COPY

Platen Glass	8.5" x 14"
First-Copy-Out-Time (Platen)	5 seconds
First-Copy-Out-Time (Document Feeder)	10 seconds
Warm-up Time (3510 / 3530)	27 seconds / 12 seconds
Paper Tray Selection	Automatic or Manual
Mixed Original Copying	Standard (Letter/Legal)
Image Combination	2:1, 4:1, ID Copy
Zoom Ratio	25 - 400% (platen) / 25 - 100% (document feeder)

Number of Copies	1-99
Electronic Sorting	Standard

SCAN

Resolution (dpi)	600 x 600
Grayscale	256 levels
File Formats	PDF, TIFF, JPEG, Secure PDF
Scan to E-mail	Standard
E-mail Address Entry	LDAP (MFX-3530), Address Book, Manual
Scan to USB Flash Drive	Standard
Scan to FTP	Standard
Scan to Network	Standard
Compatibility	TWAIN
MFX-3510 Simplex Mono Scan Speed (300 / 600 dpi)	25 images-per-minute
MFX-3510 Simplex Color Scan Speed (300 / 600 dpi)	8 images-per-minute
MFX-3530 Simplex Mono Scan Speed (300 dpi)	40 images-per-minute
MFX-3530 Simplex Color Scan Speed (300 dpi)	27 images-per-minute
MFX-3530 Duplex Mono Scan Speed (300 dpi)	32 images-per-minute
MFX-3530 Duplex Color Scan Speed (300 dpi)	20 images-per-minute
Special Scan Features	Scan to Color Printer E-Mail Attachment Support Outbound Scan Archiving Domain Name Shortcut Registration Batch Scanning

PRINT

Resolution	600 x 600 dpi
OS Support	Windows XP, Vista, Windows 7, Windows 8, Server 2003 & 2008; Mac OS 10.2 - 10.7 Various Linux, UNIX (Sun Solaris, AIX), SAP, Citrix and AS/400
Standard PDL	PCL 5e / XL
Optional PDL	PostScript3, Barcode, PDF Direct

PCL Fonts	80 Fonts
PostScript 3 Fonts	136 Fonts
Print from USB Flash Drive	Standard
Secure Print	Standard

FAX

Modem Speed	33.6 Kbps
Max. Compression	JBIG
Address Book	1,000 locations
Group Dialing	100 groups
PC-based Faxing	Yes
Fax Server Integration	Yes (Optional)
Security Reception	Yes
Fax Forwarding to E-mail	Yes
Outbound Fax Archiving	Yes
Special Fax Features	Delayed Transmission VoIP Support Custom Coversheet Insertion Batch Transmission

OPTIONS & ACCESSORIES

ITEM NO

500-Sheet Paper Cassette*	3510CAS
Paper Cabinet**	3510CAB / 3590CAB
PostScript3 Printing	PS750
Barcode Printing	BC750
PostScript Memory	PSMEM750
PostScript3 and Barcode Printing	PS750BC
Mechanical Counter	DA7664
Stamp Kit	3530STAMP
Wireless Connectivity Kit***	SX600
ScanDocs® Document Retrieval	SCANDX

* (1) additional paper cassette can be added to the MFX-3510. Up to (3) additional paper cassettes can be added to the MFX-3530.

**The 3510CAB can be used on the MFX-3510 or MFX-3530 if (0) or (1) paper cassettes have been added to the base model. The MFX-3590CAB can be used if (2) or (3) paper cassettes have been added to the MFX-3530 base model.

***The SX600 wireless Ethernet bridge can connect the MFP to a network wirelessly. Performance and functionality will vary by network.

Not all features and options available at the time of product launch.

Some features are available as paid software options.



As an ENERGY STAR® partner, Murata Machinery, Ltd. has determined that these products meet the ENERGY STAR® guidelines for energy efficiency. Muratec and the Muratec logo are trademarks and/or registered trademarks of Murata Machinery, Ltd. or its subsidiaries in the United States and other countries. Other names, such as those of products of other companies, are the trademarks or registered trademarks of their respective companies. All specifications subject to change without notice.



Muratec America, Inc.

3301 East Plano Parkway, Suite 100, Plano, Texas 75074

For more information on Muratec products or services,

call (469) 429-3300 or visit our web site at www.muratec.com