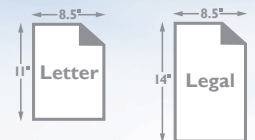


Working  
**SMART**  
has never been easier

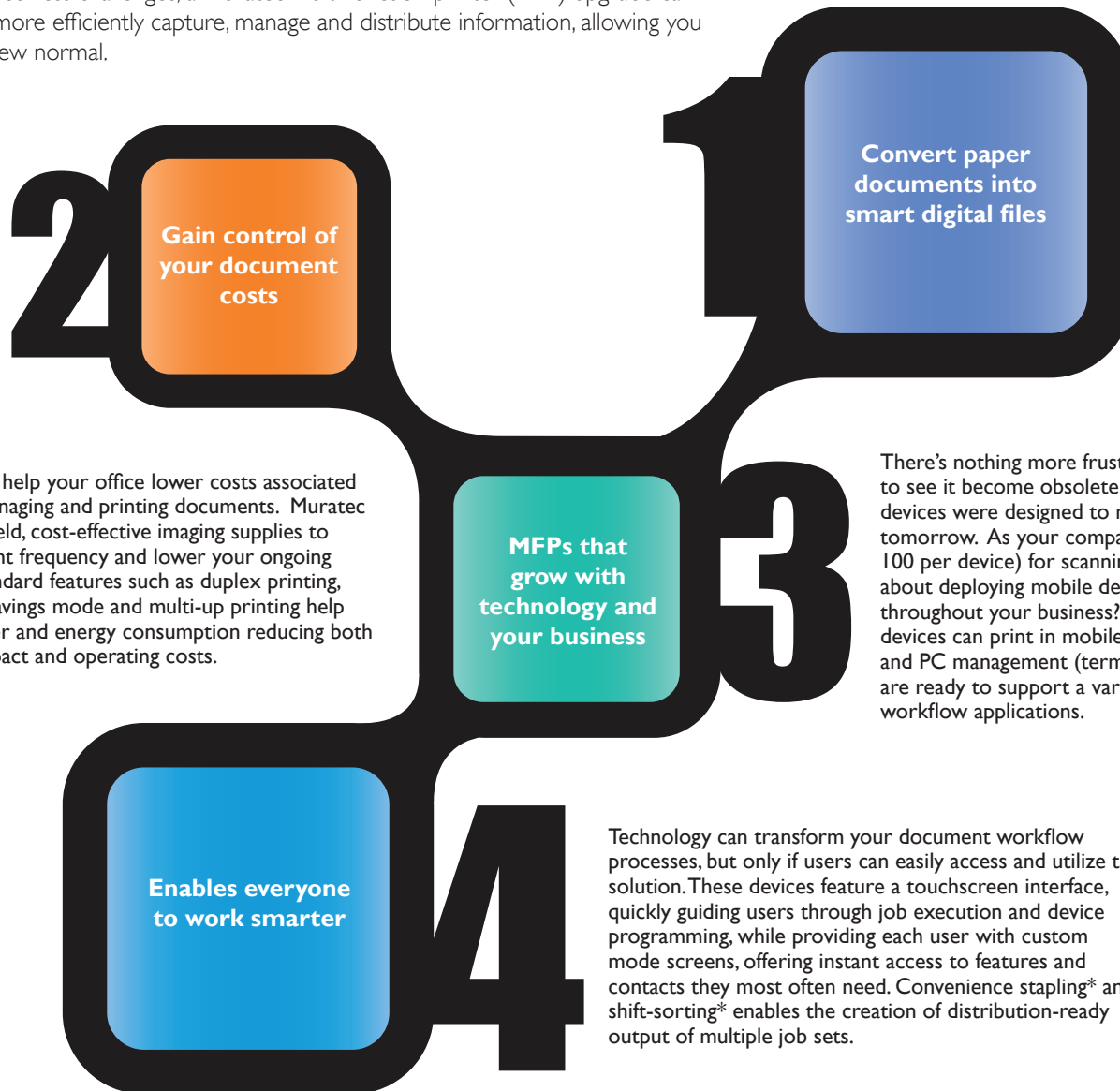


BUSINESS-CLASS DOCUMENT SOLUTIONS



# Muratec's workgroup MFPs help your office work smart

Your business is transforming. Your role, expanding and evolving. Doing more with less isn't just a passing trend, it's the new normal. Despite these challenges, companies must maintain exceptional customer service levels, meet project deadlines and process information into systems that conform to new regulations and guidelines. While we can't address all your business challenges, a Muratec multi-function printer (MFP) upgrade can help your office more efficiently capture, manage and distribute information, allowing you to thrive in the new normal.



These devices can help your office lower costs associated with capturing, managing and printing documents. Muratec starts with high-yield, cost-effective imaging supplies to reduce replacement frequency and lower your ongoing printing costs. Standard features such as duplex printing, EcoMode, toner savings mode and multi-up printing help reduce paper, toner and energy consumption reducing both environmental impact and operating costs.

Utilize these devices to quickly turn paper documents into electronic files. Once converted, electronic files can be emailed, stored in a PC folder, faxed or transferred to a cloud-based storage or workflow system. Create smarter documents by including processing instructions with your outbound email or add indexing information to automatically archive your file into a document management system.

There's nothing more frustrating than investing in technology, only to see it become obsolete as your business needs change. These devices were designed to meet the business challenges of today and tomorrow. As your company grows, users can be easily added (up to 100 per device) for scanning, printing and general MFP use. Thinking about deploying mobile devices such as smartphones and tablets throughout your business? With wireless connectivity options, these devices can print in mobile environments. Moving more workflow and PC management (terminal services) to the cloud? Muratec MFPs are ready to support a variety of terminal services and cloud-based workflow applications.

Technology can transform your document workflow processes, but only if users can easily access and utilize the solution. These devices feature a touchscreen interface, quickly guiding users through job execution and device programming, while providing each user with custom mode screens, offering instant access to features and contacts they most often need. Convenience stapling\* and shift-sorting\* enables the creation of distribution-ready output of multiple job sets.

\*Only available on the MFX-3595.

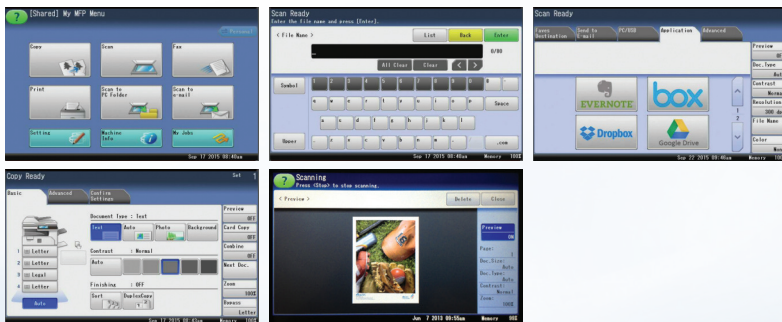


# Let's turn your paper documents into smart digital files

These devices feature a high-resolution (600 x 600 dpi) color scanner, quickly capturing your paper documents and converting them to digital files. Once converted, these documents can be delivered to email addresses, PC folder locations (local PC or network storage), cloud storage repositories, FTP locations and/or USB flash drives.

Increase efficiency by pre-registering locations into the address book to gain instant access to your most frequently used email addresses, PC folders and fax numbers.

Want to customize the file name, add processing instructions in the email body or create a metadata file to enable seamless indexing into your document management system? These devices quickly perform these functions, making document scanning even more efficient.



## Additional scanning features:

- Scan monochrome documents at up to 40 images-per-minute or color documents at up to 27 images-per-minute.
- Automatically capture two-sided originals using the patented duplexing automatic document feeder (DADF) found on these devices
- Documents can be converted into TIFF, PDF or JPEG file formats.
- Up to (1,000) email addresses and (300) PC folder shortcuts can be registered into the address book for instant access.
- Create smart documents on these devices using the optional **ScanTag®** metadata capture feature. With ScanTag®, users can add multiple lines of metadata that can enable automatic indexing into a variety of popular document management solutions.
- DirectScan® enables users to scan documents directly into PC folders without having to install any additional hardware or software connectors.
- Preview color and monochrome scan jobs on the control panel before sending.
- Optional scan-to-cloud application enables direct scanning to Evernote®, Google Drive™, Dropbox and Box accounts.
- Blank page detection removal: These devices can automatically detect and remove blank pages from a scan job.
- Papercut® integration\*: These devices will be integrated with the Papercut® MF, enabling a higher level of device authentication, follow me printing, cost accounting and device management.
- Rescan\*\* enables you to preview scan jobs on the control panel and replace specific pages without having to cancel and rescan the entire job.

**ScanTag®**

**DirectScan™**



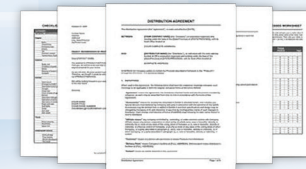
Mobile print solutions



Duplex document scanning



Intuitive operation



Professional document output

\*Available late 2015

\*\*Only available on the MFX-3595.

# Complete document solution

## Faxing solutions



- Business-class fax solutions include a blazing-fast 33.6 Kbps modem, 1,000 location address book, transmission archiving (for auditing), fax forwarding to email / PC folders and transmission confirmation reporting.
- These devices can integrate with a variety of popular fax server applications utilizing the optional email gateway feature.
- Intuitive fax driver enables you to send faxes directly from a PC application. Easy access to your MFP address book, customizable cover pages and multi-location broadcasting is supported.

## Document and device security solutions



- Documents printed using the secure print feature are stored within machine memory for up to 24 hours. After 24 hours, they are automatically wiped from the machine memory. No other documents are stored in the machine's memory.
- Machine settings can be quickly backed-up and restored by the IT administrator.
- Route inbound fax documents to an email address or PC folder.
- Require user log-in prior to gaining machine access.
- Create secure PDFs that require password entry prior to viewing.
- Create an audit trail of device communication to record the details of outbound fax and email transmissions (Muratec exclusive feature).

## User-friendly operations



- These devices feature a touchscreen that enhances the user experience.
- These devices were designed with the busy workgroup in mind, meaning users can quickly and easily replenish paper cassettes, change toner and drum cartridges, clear paper jams and execute machine operations.
- The optional two bin output tray can separate print, copy or fax documents, while shift-sorting\* and convenience stapling\* combine to create distribution-ready output.
- The "My MFP" mode enables each machine user to create a custom home screen that displays the features they most frequently access.
- Users can insert both letter and legal size documents into the document feeder and the device will correctly identify each size and produce output on the appropriate paper size (assuming both paper sizes have been correctly loaded into the cassettes).

## Printing solutions



- Up to 37 page-per-minute output speed.
- Standard PCL5 / XL enables printing compatibility with a majority of operating systems and applications (Windows, UNIX, SAP, AS/400).
- Optional PostScript 3 printing enables compatibility with Macintosh operating systems.
- Up to three optional paper cassettes can be added to the MFX-3535; up to two optional paper cassettes can be added to the MFX-3595 to provide high-volume print environments with additional paper capacity and instant access to multiple paper types when printing.
- "Scan to color print" application enables you to scan a color document on these devices and automatically print it on a pre-selected color printer.
- These devices support the most common paper sizes (letter, legal), dramatically reducing hardware cost.

\*Only available on the MFX-3595.



# Configuration



## BASE CONFIGURATION



### MFX-3535

- 37 page-per-minute printing
- 80-sheet *duplexing* automatic document feeder (DADF)
- Duplex printing
- 500-sheet paper cassette

- 100-sheet bypass tray
- 5.8" touchscreen interface
- Ethernet and USB connectivity
- PCL 5e / XL printing

- Color scan to email, folder, FTP and USB
- Optional scan-to-cloud application enables direct scanning to Evernote®, Google Drive®, Dropbox® and Box® accounts.

### MFX-3595

- 37 page-per-minute printing
- 80-sheet *duplexing* automatic document feeder (DADF)
- Duplex printing

- (2) 500-sheet paper cassettes
- 100-sheet bypass tray
- 7" color touchscreen
- Ethernet and USB connectivity
- PCL 5e / XL printing

- Color scan to email, folder, FTP and USB
- Built-in convenience stapler and shift-sorting
- Optional scan-to-cloud application enables direct scanning to Evernote®, Google Drive®, Dropbox® and Box® accounts.

## PAPER OPTIONS



### MFX-3535 + 3510CAB

- Paper cabinet includes area for paper, supply and manual storage, as well as locking wheels for portability and stability.



### MFX-3535 + 3510CAS + 3510CAB

- Paper capacity of 1,100-sheets
- Paper cabinet includes area for paper, supply and manual storage, as well as locking wheels for portability and stability.



### MFX-3535 + (2) 3510CAS + 3590CAB

- Paper capacity of 1,600-sheets
- Paper cabinet includes area for paper, supply and manual storage, as well as locking wheels for portability and stability.



### MFX-3535 + (3) 3510CAS + 3590CAB

- Paper capacity of 2,100-sheets (maximum capacity for MFX-3535)
- Paper cabinet includes area for paper, supply and manual storage, as well as locking wheels for portability and stability.



### MFX-3595 + 3510CAB

- Paper capacity of 1,100-sheets
- Small paper cabinet includes area for paper and manual storage, as well as locking wheels for portability and stability.



### MFX-3595 + 3510CAS + 3590CAB

- Paper capacity of 1,600-sheets
- Small paper cabinet includes area for paper and manual storage, as well as locking wheels for portability and stability.



### MFX-3595 + (2) 3510CAS + 3590CAB

- Paper capacity of 2,100-sheets (maximum capacity for MFX-3595)
- Small paper cabinet includes area for paper and manual storage, as well as locking wheels for portability and stability.
- Model number MFX-3595x

## PRINTING OPTIONS



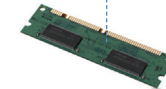
### PostScript3 (PS750)

- The PS750 can be added to enable compatibility with Macintosh operating environments or specialty print applications.
- Features PDF Direct printing application that enables drag-and-drop PDF printing.
- PS3 enables printing from the following Linux environments:  
- RedHat 3-5, 9      - SUSE 10.1 - 10.3, 11      - Fedora 4-10



### Barcode printing (BC750)

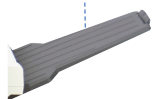
- The BC750 enables the printing of barcodes including UPC/EAN, Interleave25, Code 39, Code 126, PostNet and more.



### PostScript3 memory expansion (PSMEM750)

- 1 GB memory expansion increases PostScript printing performance for specialty printing applications.
- This option is strongly recommended if using the PDF Direct printing feature.

## MISCELLANEOUS OPTIONS



### 2-bin output tray (35102BN)

- Side output tray separates print, fax or copy jobs from printing in the primary output tray.
- 2-bin tray capacity is 150-sheets.

### MURATEC OPTION

### Mechanical counter (DA7664)

- Quickly access machine print counts using this hard counter.

### MURATEC OPTION

### Stamp kit (3530STAMP)

- This scan stamp places a small stamp on each scanned page to insure that it was scanned.



### Wireless connectivity option (SX4600WAN)

- Use this option to connect your MFP wirelessly to a network.
- Assists with mobile printing applications.

# Specifications

## GENERAL

<b>Print speed (simplex)</b>	37 pages-per-minute
<b>Print speed (duplex)</b>	10 pages-per-minute
<b>User interface (3535; 3595)</b>	5.8" touchscreen; 7" color touchscreen
<b>Document feeder capacity</b>	80-sheets
<b>Duplexing automatic document feeder</b>	Standard
<b>Standard paper capacity (3535; 3595)</b>	600-sheets (includes 100-sheet bypass tray; 1,100-sheets (includes 100-sheet bypass tray)
<b>Maximum paper capacity</b>	2,100 sheets
<b>Cassette paper weight</b>	20 - 28 lb.
<b>Paper loading (cassette)</b>	Face up
<b>Bypass paper weight</b>	20 - 43 lb.
<b>Paper loading (bypass)</b>	Face down
<b>Output tray capacity</b>	250-sheets
<b>Output position</b>	Face down
<b>Duplex printing</b>	1:2, 2:2
<b>Dimensions (H x W x D), weight (3535)</b>	18.9" x 21.4" x 20.03", 53.13 lbs.
<b>Dimensions (H x W x D), weight (3595)</b>	24.76" x 21.4" x 20.03", 63.93 lbs.
<b>DHCP compliant</b>	Yes (Default On)
<b>Ethernet connection</b>	Standard 10/100 BaseT, RJ-45 connection
<b>Network protocol</b>	TCP/IP
<b>Local connection</b>	Standard USB 2.0
<b>System memory</b>	512 MB
<b>Toner yield</b>	24,000 @ ISO 19752
<b>Drum yield</b>	60,000
<b>Convenience stapler</b>	Yes*
<b>Shift-sorting</b>	Yes*

## COPY

<b>Platen glass</b>	8.5" x 14"
<b>First-copy-out-time (platen)</b>	5 seconds
<b>First-copy-out-time (document feeder)</b>	10 seconds
<b>Warm-up time</b>	12 seconds
<b>Paper tray selection</b>	Automatic or manual
<b>Mixed original copying</b>	Standard (letter, legal)
<b>Image combination</b>	2:1, 4:1, ID Copy

<b>Zoom ratio</b>	25 - 400 percent (platen) / 25 - 100 percent (document feeder)
<b>Number of copies</b>	1-99
<b>Electronic sorting</b>	Standard

## SCAN

<b>Resolution (dpi)</b>	600 x 600
<b>Grayscale</b>	256 levels
<b>File formats</b>	PDF, TIFF, JPEG, Secure PDF
<b>Scan to email</b>	Standard
<b>Email address entry</b>	LDAP, address book, manual
<b>Scan to USB flash drive</b>	Standard
<b>Scan to FTP</b>	Standard
<b>Scan to network</b>	Standard
<b>Scan to cloud</b>	Standard
<b>TWAIN compatibility</b>	Yes
<b>Simplex mono scan speed (300 dpi)</b>	40 images-per-minute
<b>Simplex color scan speed (300 dpi)</b>	27 images-per-minute
<b>Duplex mono scan speed (300 dpi)</b>	32 images-per-minute
<b>Duplex color scan speed (300 dpi)</b>	20 images-per-minute
<b>Special scan features</b>	Scan to color printer Email attachment support Outbound scan archiving Domain name shortcut Registration Batch scanning Scan-to-cloud (Evernote, Box, Dropbox, Google Drive) Blank page detection ScanTag metadata capture Rescan*

## PRINT

<b>Resolution</b>	600 x 600 dpi
<b>Supported OS</b>	Windows 10, Windows XP, Vista, Windows 7, Windows 8, Server 2003, 2008; Mac OS 10.2 - 10.11, Various Linux, UNIX (Sun Solaris, AIX), SAP, Citrix and AS/400
<b>Standard PDL</b>	PCL 5e / XL
<b>Optional PDL</b>	PostScript3, Barcode, PDF Direct
<b>PCL fonts</b>	80 fonts

<b>PostScript 3 fonts</b>	136 fonts
<b>Print from USB flash drive</b>	Standard
<b>Secure print</b>	Standard

## FAX

<b>Modem speed</b>	33.6 Kbps
<b>Max. compression</b>	JBIG
<b>Address book</b>	1,000 locations
<b>Group dialing</b>	100 groups
<b>PC-based faxing</b>	Yes
<b>Fax server integration</b>	Yes (Optional)
<b>Security reception</b>	Yes
<b>Fax forwarding to email</b>	Yes
<b>Outbound fax archiving</b>	Yes
<b>Special fax features</b>	Delayed transmission VoIP support Custom coversheet insertion Batch transmission

## OPTIONS AND ACCESSORIES

## ITEM NO

<b>500-sheet paper cassette**</b>	3510CAS
<b>Paper cabinet***</b>	3510CAB / 3590CAB
<b>PostScript3 printing</b>	PS750
<b>Barcode printing</b>	BC750
<b>PostScript memory</b>	PSMEM750
<b>PostScript3 and barcode printing</b>	PS750BC
<b>Mechanical counter</b>	DA7664
<b>Stamp kit</b>	3530STAMP
<b>Wireless connectivity kit****</b>	SX4600WAN
<b>ScanTag metadata capture</b>	SCANTAG
<b>Scan-to-cloud</b>	SCANCLOUD

\*Only available on the MFX-3595

\*\* Up to three (3) additional paper cassettes can be added to the MFX-3535; up to two (2) additional paper cassettes can be added to the MFX-3595.

\*\*\*The 3510CAB can be used on the MFX-3595 if no paper cassettes have been added to the base model. The MFX-3590CAB can be used if (1) or (2) paper cassettes have been added to the base model.

\*\*\*\*The SX4600WAN wireless ethernet bridge can wirelessly connect the MFP to a network.

Performance and functionality will vary by network.

Not all features and options available at the time of product launch.

Some features are available as paid software options.



As an ENERGY STAR® partner, Murata Machinery, Ltd. has determined that these products meet the ENERGY STAR® guidelines for energy efficiency.

Muratec and the Muratec logo are trademarks and/or registered trademarks of Murata Machinery, Ltd. or its subsidiaries in the United States and other countries.

Other names, such as those of products of other companies, are the trademarks or registered trademarks of their respective companies.

All specifications subject to change without notice.



**Muratec America, Inc.**

3301 East Plano Parkway, Suite 100, Plano, Texas 75074

For more information on Muratec products or services,

call (469) 429-3300 or visit our web site at [www.muratec.com](http://www.muratec.com)

