








Muratec's MFX-series
BRIDGES THE GAP
between the paper and digital world

BUSINESS-CLASS DOCUMENT SOLUTIONS

muratec

Why choose Muratec's MFX-series?

The MFX-series from Muratec has been designed with four key pillars in mind: usability, security, flexibility and performance. These four elements blend flawlessly to deliver your office the perfect document solution.

 Usability	 Security	 Flexibility	 Performance
<ul style="list-style-type: none">  9" adjustable color touchscreen available on most models  Smart onboard operating system delivers touch-and-swipe usability and enables jobs to get done faster  Smart menus provide instant access to frequently used features  Paper cassettes open with ease and enable instant refilling  Optional job separator trays can automatically separate copy, print and fax jobs  MPH101 mobile print hub makes printing from any iOS or Android device a snap 	<ul style="list-style-type: none">  IC card readers can be utilized to authenticate users prior to device usage  Biometric authentication options available  Supports SSL and TSL security standards  Secure printing suppresses print jobs at the device level  Integrated with Papercut™ print management tools to securely manage and monitor device usage  Products meet ISO 15408 EAL and IEEE 802.1x security standards 	<ul style="list-style-type: none">  Multiple paper options can be added to increase paper capacity and variable media availability  Optional staple finishing, hole-punching, booklet creation, tri-folding and offset stacking available  Optional Fiery print server delivers professional color management, control and output  Connect the MFX-series to the corporate network, or enable wireless connectivity and instant mobile device connections  Add up to (4) fax lines to create a centralized document processing hub 	<ul style="list-style-type: none">  Full color & monochrome printing at speeds up to 55 pages-per-minute  Full color scanning at speeds up to 160 images-per-minute  Deliver documents to e-mail, PC folders, cloud storage, USB drives and more  Standard HDD storage for instant document recall and production  1.6 Ghz processing power and up to 4-GB of internal system memory deliver blazing fast performance and efficiency  Print up to 11" x 17" full bleed, on 12" x 18" media, on select models



**Features and specifications vary by model*



Touch and swipe usability

The MFX-series was designed to revolutionize the way users interact with their office equipment.

It starts with the color touchscreen, which mimics the “touch and swipe” interface found on today’s mobile devices.

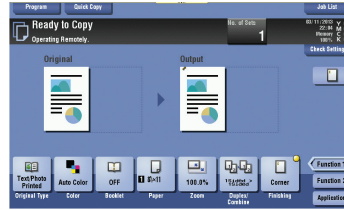


MFX-C2260 / C2860 panel

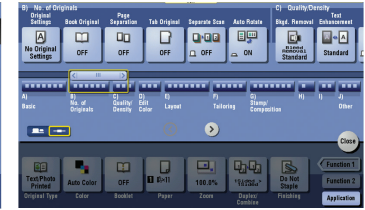
Features such as pop-up menus, scrolling function keys and fully customizable user screens deliver the most intuitive, user-friendly experience on the market.



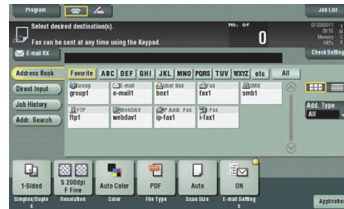
MFX-C5590 panel shown with optional keypad



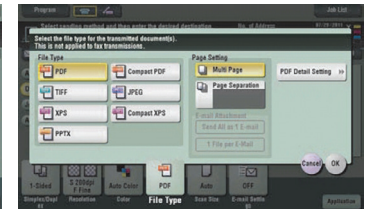
Smart menus provide instant access to frequently used features.



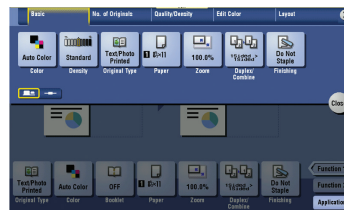
Touch, scroll and swipe your way through job programming and execution, just as you would on your mobile device.



Full access to the email addresses, fax contacts and scanning locations you frequently access.



Scan documents in TIFF, JPEG, PDF, PDF/A, Compact PDF, XPS and PowerPoint™.



Pop-up screens provide access to advanced features without leaving the primary menu screen.



Adjustable control panel provides device access to all office workers. (not available on the MFX-C2260/C2860)



Document and device security

Demand for protecting both devices and documents is rising. The MFX-series is up to the challenge with features to help control machine access, protect network integrity and encrypt documents before sending.

Document and device security features include:

- Secure print, which requires device authentication before releasing a print job from memory.
- Customized user authentication for printing, scanning, faxing and user boxes.
- Encrypted PDF workflow protects information as it passes from the PC to the network.
- IP filtering restricts access to the device based on an IP address authentication list.
- SSL/TLS encryption protects data during an exchange with an LDAP server.
- S/MIME encryption to safeguard email exchanges.
- Audit Log/Image Log tracks usage and controls access.
- Biometric authentication unit and HID authentication tool kit can provide additional layers of authentication without compromising user efficiency.
- Meets ISO 15408 EAL and IEEE 802.1x security standards



Optional proximity card reader



Optional mount authentication devices



Biometric authentication unit

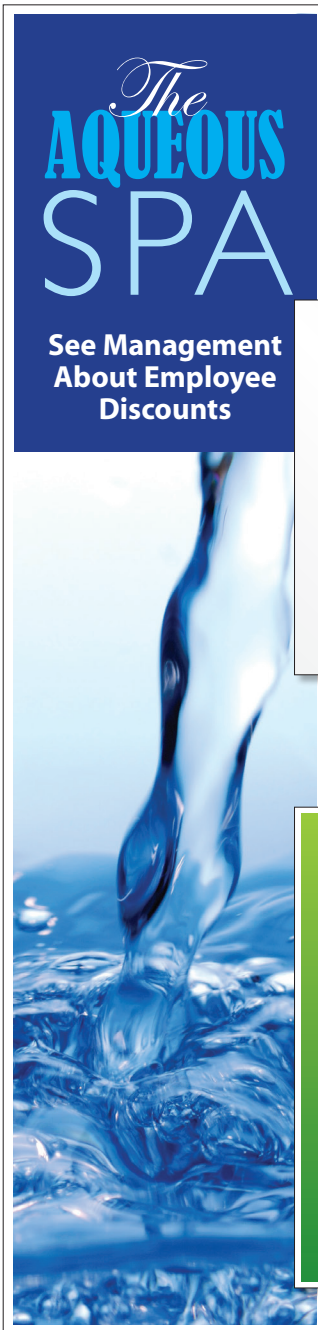


Deliver distribution-ready output

The MFX-series is flexible enough to produce professional-looking reports, presentations, case files, newsletters, bulletins, flyers, marketing and training materials. Produce documents securely in-house to better control costs, resources and confidentiality.

Paper Tray	Min – Max Size	Min – Max Weight
Multipurpose bypass tray	4" x 6" – 12" x 18"*	16 lb. bond – 79 1/4 lb. cover
Paper cassette 1	5.5" x 8.5" – 11" x 17"	14 lb. bond – 68 lb. index
Paper cassette 2	5.5" x 8.5" – 11" x 17"	14 lb. bond – 68 lb. index
Paper cassette 3 (Optional)	5.5" x 8.5" – 11" x 17"	14 lb. bond – 68 lb. index
Paper cassette 4 (Optional)	5.5" x 8.5" – 11" x 17"	14 lb. bond – 68 lb. index
Large capacity cassette (Optional)	8.5" x 11"	14 lb. bond – 68 lb. index

*MFX-C2260/C2860 support up to 11" 17" output

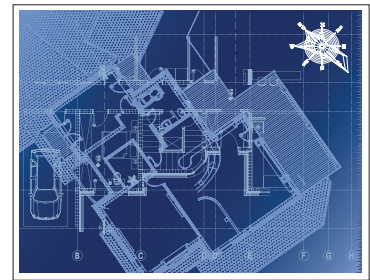


11.25" x 47.25" – Banner

Color banners help draw attention to a special event.

Applications include:

- Trade show signage
- Party store profit center (Birthday banners)
- Event announcements



Waterproof paper

Waterproof paper is designed for harsh applications and climates.

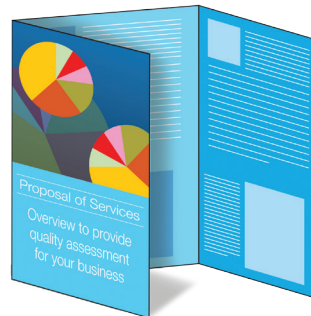
Applications include:

- Real estate collateral
- Outdoor bulletins
- Construction site collateral
- Maps / signs
- Menus



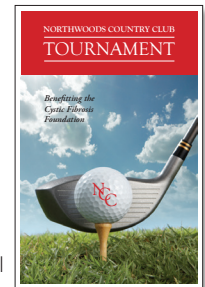
Recycled paper

Delivers exceptional output results when using recycled papers featuring 30%, 50% and 100% post consumer recycled content.



Tri-fold brochures

Create pre-folded pamphlets and brochures (up to three sheets).



Booklets

If the optional floor finisher and saddle stitcher have been installed, users can create distribution-ready booklets. This is the perfect application for manuals, company brochures, financial reports, in-house publications, event guides and more.



8.5" x 14" – Legal



Specialty paper

Specialty paper can enhance the perception and uniqueness of a document.

Applications include:

- Cover letters / resumes
- Menus / wine lists
- Special recognition / awards



We practice what we preach at Muratec

In fact, we utilize our own machines in our everyday business practices. Muratec's people help us stand out from the crowd. Take a look at the folks behind the scenes and how they use their Muratec MFX-series device to assist with their everyday document needs.



Customer support and marketing

- Proofing for brochures and marketing collaterals
- Printing tri-fold quick reference guides and "how-to" booklets
- Scanning vendor and distributor contracts
- Faxing order confirmation sheets and shipping insurance documents



Precision Label Series marketing

- Creates the cover sheets and insert pages for our customer-facing label sample books
- Prospecting letters and direct mail marketing
- Generating professional proposals and contracts



Service and support

- Printing and scanning warranty forms
- Printing parts requests and pick tickets
- Service bulletin production and editing



Finance and human resources

- Scanning credit applications, job applications and new hire paperwork
- Printing sales reports, product line forecasts and monthly financial statements
- Printing insurance forms and 401K documentation



Distribution center

- Printing pick tickets and packing slips
- Scanning shipping insurance documentation & proof of delivery
- Printing marketing inserts and product safety instructions
- Labels for warehouse racking and parts bins

MFX-series specifications



SPECIFICATIONS	MFX-C5590	MFX-C4590	MFX-C3690	MFX-C3090	MFX-C2590	MFX-C2860	MFX-C2260
Maximum output size	12" x 18"	12" x 18"	12" x 18"	12" x 18"	12" x 18"	11" x 17"	11" x 17"
Print speed	55 ppm color / mono	45 ppm color / mono	436 ppm color / mono	30 ppm color / mono	25 ppm color / mono	28 ppm color / mono	22 ppm color / mono
User interface	9" color touchscreen	9" color touchscreen	9" color touchscreen	9" color touchscreen	9" color touchscreen	7" color touchscreen	7" color touchscreen
First-copy-out time	4.4 seconds color 3.5 seconds mono	5.1 seconds color 4 seconds mono	6.9 seconds color 5.3 seconds mono	7.3 seconds color 5.6 seconds mono	7.5 seconds color 6.1 seconds mono	8.4 seconds color 6.8 seconds mono	8.4 seconds color 6.8 seconds mono
Warm-up time	22 seconds	25 seconds	20 seconds	18 seconds	20 seconds	20 seconds	20 seconds
Std./max. machine memory	4-GB RAM / 4-GB RAM	4-GB RAM / 4-GB RAM	2-GB RAM / 4-GB RAM	2-GB RAM / 4-GB RAM	2-GB RAM / 4-GB RAM	2-GB RAM / 4-GB RAM	2-GB RAM / 4-GB RAM
Hard drive/ HDD memory	Standard (encryption & overwrite-std) / 250-GB	Standard (encryption & overwrite-std) / 250-GB	Standard (encryption & overwrite-std) / 250-GB	Standard (encryption & overwrite-std) / 250-GB	Standard (encryption & overwrite-std) / 250-GB	Standard (encryption & overwrite-std) / 250-GB	Standard (encryption & overwrite-std) / 250-GB
Std./max. paper capacity	1,150 / 6,650	1,150 / 6,650	1,150 / 6,650	1,150 / 6,650	1,150 / 6,650	1,100 / 3,600	1,100 / 3,600
Paper weight (cassette)	14 lb. – 68 lb.	14 lb. – 68 lb.	14 lb. – 68 lb.	14 lb. – 68 lb.	14 lb. – 68 lb.	15 15/16 lb. – 68 1/8 lbs.	15 15/16 lb. – 68 1/8 lbs.
Paper weight (bypass tray)	16 lb. – 79.1/4 lb.	16 lb. – 79.1/4 lb.	16 lb. – 79.1/4 lb.	16 lb. – 79.1/4 lb.	16 lb. – 79.1/4 lb.	15 15/16 lb. – 68 1/8 lbs.	15 15/16 lb. – 68 1/8 lbs.
Document feeder	Std. 300-sheet DADF	Std. 300-sheet DADF	Opt. 100-sheet DADF or RADF	Opt. 100-sheet DADF or RADF	Opt. 100-sheet DADF or RADF	Opt. 100-sheet RADF	Opt. 100-sheet RADF
Fax options	Opt. 33.6 Kbps up to 4 lines can be installed	Opt. 33.6 Kbps up to 4 lines can be installed	Opt. 33.6 Kbps up to 4 lines can be installed	Opt. 33.6 Kbps up to 4 lines can be installed	Opt. 33.6 Kbps up to 4 lines can be installed	Opt. 33.6 Kbps	Opt. 33.6 Kbps
Security features	Network Authentication Ipsec, SSL, SNMPv3 Transport Layer Security Meets ISO 15408 EAL & IEEE 802.1x standards	Network Authentication Ipsec, SSL, SNMPv3 Transport Layer Security Meets ISO 15408 EAL & IEEE 802.1x standards	Network Authentication Ipsec, SSL, SNMPv3 Transport Layer Security Meets ISO 15408 EAL & IEEE 802.1x standards	Network Authentication Ipsec, SSL, SNMPv3 Transport Layer Security Meets ISO 15408 EAL & IEEE 802.1x standards	Network Authentication Ipsec, SSL, SNMPv3 Transport Layer Security Meets ISO 15408 EAL & IEEE 802.1x standards	Network Authentication Ipsec, SSL, SNMPv3 Transport Layer Security Meets ISO 15408 EAL & IEEE 802.1x support	Network Authentication Ipsec, SSL, SNMPv3 Transport Layer Security Meets ISO 15408 EAL & IEEE 802.1x support
Finishing features	Opt - internal staple finisher; floorstanding staple finisher; saddle stitch, hole punching, separator trays, z-fold, post inserter	Opt - internal staple finisher; floorstanding staple finisher; saddle stitch, hole punching, separator trays, z-fold, post inserter	Opt - internal staple finisher; floorstanding staple finisher; saddle stitch, hole punching, separator trays	Opt - internal staple finisher; floorstanding staple finisher; saddle stitch, hole punching, separator trays	Opt - internal staple finisher; floorstanding staple finisher; saddle stitch, hole punching, separator trays	Opt - internal staple finisher; floorstanding staple finisher; saddle stitch, hole punching, separator trays	Opt - internal staple finisher; floorstanding staple finisher; saddle stitch, hole punching, separator trays
Print solutions	Std - PCL & Postscript3 / Opt - Fiery print server	Std - PCL & Postscript3 / Opt - Fiery print server	Std - PCL & Postscript3 / Opt - Fiery print server	Std - PCL & Postscript3 / Opt - Fiery print server	Std - PCL & Postscript3 / Opt - Fiery print server	Std - PCL & Postscript3	Std - PCL & Postscript3
Scan to	Std. color scan to e-mail, network, USB (scan to cloud optional)	Std. color scan to e-mail, network, USB (scan to cloud optional)	Std. color scan to e-mail, network, USB (scan to cloud optional)	Std. color scan to e-mail, network, USB (scan to cloud optional)	Std. color scan to e-mail, network, USB (scan to cloud optional)	Std. color scan to e-mail, network, USB	Std. color scan to e-mail, network, USB
Dimensions (HxWxD)	38" x 24.2" x 27"	38" x 24.2" x 27"	31" x 24.2" x 27"	31" x 24.2" x 27"	31" x 24.2" x 27"	28.9" x 23" x 26"	28.9" x 23" x 26"
Toner yield	26,000 color / 28,000 mono (unit does not ship with toner)	26,000 color / 28,000 mono (unit does not ship with toner)	26,000 color / 28,000 mono (unit does not ship with toner)	26,000 color / 28,000 mono (unit does not ship with toner)	26,000 color / 28,000 mono (unit does not ship with toner)	21,000 color / 24,000 mono (unit does not ship with toner)	21,000 color / 24,000 mono (unit does not ship with toner)
Drum yield	130,000 color / 145,000 mono (unit includes full drums)	125,000 color / 145,000 mono (unit includes full drums)	90,000 color / 120,000 mono (unit includes full drums)	75,000 color / 120,000 mono (unit includes full drums)	55,000 color / 90,000 mono (unit includes full drums)	90,000 color / 105,000 mono (unit includes full imaging units)	70,000 color / 80,000 mono (unit includes full imaging units)
Developer yield	600,000 color & mono (unit includes full developers)	600,000 color & mono (unit includes full developers)	600,000 color & mono (unit includes full developers)	600,000 color & mono (unit includes full developers)	600,000 color & mono (unit includes full developers)	600,000 color & mono (unit includes full developers)	600,000 color & mono (unit includes full developers)
Maximum monthly duty cycle	200,000	150,000	125,000	100,000	80,000	120,000	100,000

Muratec and the Muratec logo are trademarks and/or registered trademarks of Murata Machinery, Ltd. or its subsidiaries in the United States and other countries. Other names, such as those of products of other companies, are the trademarks or registered trademarks of their respective companies. All specifications subject to change without notice.

MK3271



Muratec America, Inc. 3301 East Plano Parkway, Suite 100, Plano, Texas 75074

For more information on Muratec products or services, call (459) 429-3300 or visit our web site at www.muratec.com

