

C330dn

OKI[®]
PRINTING SOLUTIONS



Exceptional speed, performance and energy efficiency – with HD Color – for your desktop



OKI Printing Solutions and The Environment

- ENERGY STAR[®] Compliant** Superior energy efficiency
- Toner Save Mode** Reduces amount of consumables used
- Duplex (2-sided) Printing** Saves energy and resources
- Automatic ECO Mode** Lowers power to save energy
- 1-Piece Image Drum** Reduced use of disposable material





The high-performance, low-profile C330dn Digital Color printer from OKI Printing Solutions packs a lot of big printer features into its small profile.

Highlights:

Stand-out features that include:

- **Fast output: color at up to 23 ppm; black & white at up to 25 ppm¹**
- **Fast time to first page: color in as little as 9 seconds, black & white in 8.5 seconds¹**
- **Fast processor speed: 532 MHz**
- **Large standard paper capacity: 350 sheets; expandable to 880 sheets with options**
- **High reliability: robust 45,000 pages-per-month duty cycle**
- **Extremely low profile: just 9.5" in height**

All that—plus all this:

- **HD Color printing technology for sharp detail and rich, dramatic color**
- **Duplex (2-sided) printing standard**
- **Prints banner-size sheets up to 47"²**
- **PCL® 6 and PostScript® 3™ emulations**
- **1200 x 600 dpi resolution**
- **Windows® and Mac® compatibility**
- **10/100 Base-T network and high-speed USB v2.0 connectivity, standard**
- **Memory expandable to 640 MB**
- **ENERGY STAR® compliant**
- **1-Year limited warranty with Overnight Exchange on printer³; 5-Year limited warranty on LED printheads**
- **Live, toll-free technical support 24/7/365⁴**

Expect more from this fast, reliable and flexible desktop printer—and you'll get it.

The C330dn Digital Color printer comes network-ready and provides all you want in a color printer, plus exceptional cost efficiency and the legendary reliability of OKI Printing Solutions products—all in a sleek, compact desktop unit.

Outstanding print speeds and performance –

The C330dn turns out color documents at a rate of 23 pages per minute, with the first page appearing in as little as 9 seconds.¹ Black & white pages print at up to 25 ppm; page one in 8.5 seconds.¹ The printer also has a fast processor (532 MHz), high reliability (45,000-page monthly duty cycle), generous standard paper capacity (350 sheets), all in a low-profile chassis (just 9.5 inches tall).

HD Color Printing technology – The C330dn utilizes this unique OKI Printing Solutions process for breathtaking output. HD Color Printing technology combines multi-level LED printheads and microfine toner for precise toner placement; deep, saturated colors; and fine detail on regular copy paper and glossy media.

Exceptional paper handling and media flexibility – The C330dn has the ability to handle a wide variety of media through its 100-sheet multi-purpose tray, including labels, envelopes, and card stock up to 220 gsm. Use it to print everything from 3" x 5" cards to banner-size sheets up to 8.5" x 47".²

Small workgroup connectivity built in – Share the advantages and efficiencies of the C330dn through its internal OkiLAN® 10/100 Base-T print server, or make it a personal printer by connecting via the high-speed USB v2.0 port.

Perfect for virtually any printing environment –

The versatile C330dn works beautifully in the most popular operating system environments, including Windows®, Mac®, Linux, UNIX® and Citrix®. It comes standard with PCL® 6 and PostScript® 3™ emulations, for professional-looking text and graphics.

Unmatched warranty and support – We're so confident in the reliability of the C330dn that we provide an industry-leading 5-year warranty on its printheads, and a 1-year limited printer warranty with Overnight Exchange and optional coverage extensions.³

If you need technical assistance, you can speak to a live OKI Printing Solutions expert located in North America by calling **800.OKI.DATA** (800-654-3282) at any time.³

For a fast, efficient color printer that can increase your productivity while delivering beautiful color documents, the C330dn from OKI Printing Solutions should be your first choice.

¹ Published performance results based on laboratory testing of simplex (1-sided) print speed. Individual results may vary.

² Optimal performance on larger files may require additional RAM.

³ Available in the U.S. and Canada only.

Your best choice for superior color accuracy, a better bottom line, and respect for the environment.

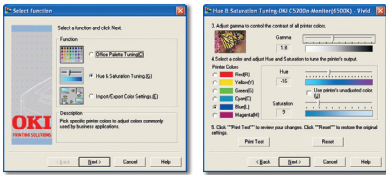
The C330dn Color printer from OKI Printing Solutions deliver more than brilliant output at exceptional speeds. It also offers a long list of features that can improve your image, profitability and peace of mind. Here are some value-added examples:

Control the quality of your output

Color Swatch Easily match custom colors to the color values on your C330dn printer. Select a simple swatch to print a basic set of colors, then match the values in your application. Select a custom swatch and set the Hue, Saturation and Lightness to target your custom color.



Color Correct Makes it easy to adjust colors commonly found in applications like Microsoft® Word, Excel® and PowerPoint®. It also lets you adjust the overall color of a print by controlling the lightness, darkness and contrast of images, and the intensity and lightness of the colors.



Control your printing costs

Color Access Policy Manager (CAPM) Lets you control and monitor color usage by defining who can print and what gets printed. Decide who and what can print in color, in black & white or not at all, making color printing cost-effective. Access levels can be assigned by user name, PC/server name, application, file name and web sites. Once policies are configured, CAPM determines how—or if—incoming jobs will print. All policies are password-protected for added security.



HD Color Printing



Crisp, clear Black & White



No printout permitted

Job Accounting Enables tracking of color and mono printing costs, easy monitoring of printing activity, and greater control of printer usage. It generates reports for administrative, bill-back or cost-accounting purposes. User permissions can be assigned and are stored on the printer—not on the network—so the system is totally secure.

Control your impact on the environment

The C330dn offers a number of environmentally friendly features, including:

Automatic ECO Mode When you're only printing a few pages, the C330dn's response is to enter this energy-saving, performance-enhancing setting. Same terrific output, lower power consumption. Everybody wins.

Mono Resource-Print Mode Even when the color toner runs out, you can still print needed documents in crisp, clear black & white. Simply cancel the original job and select this energy-efficient mode in the printer driver.

One-piece image drum This long-lasting, user-replaceable consumable remains friendly to your budget while lowering the number of items to dispose of or store.

"Clean hands" consumables Finely-engineered individual toner cartridges and one-piece image drum, with toner-trapping shutters, let you change depleted supplies easily and without any spills.

ENERGY STAR® compliance With its lower power consumption and standard duplexing, the C330dn meets the government's standards for energy efficiency.

THE C330dn AT A GLANCE

23 ppm color and 25 ppm mono print speed¹

3,000-page CMY, 3,500-page Black toner cartridges²

Single Pass Color™ digital technology

Duplex (2-sided) printing, standard

100-sheet multi-purpose tray

Network and USB 2.0 interfaces, standard

45,000 pages-per-month duty cycle

530-sheet 2nd paper tray (optional)



HD (High Definition) Color printing technology

PCL® 6 and PostScript® 3™ emulations

16-character, 2-line backlit LCD screen display

Base printer model just 9.5" high

Prints on sheets up to 80 lb. cover (220 gsm) and banners up to 8.5" x 47"³

250-sheet paper tray, standard

128 MB standard memory, upgradable to 640 MB max

¹ Published performance results based on laboratory testing of simplex (1-sided) print speed. Individual results may vary.

² Printers ship with complete set of 1,000-page "starter" toner cartridges.

³ Larger files may require additional memory.

C330dn

Specifications

Performance

- **Print Speed:** Up to 23 ppm Color; up to 25 ppm Mono¹
- **Time to First Page:** 9 sec. Color; 8.5 sec. Mono¹
- **Processor:** 532 MHz PowerPC CPU
- **HD Color Printing Technology:** Combines multilevel LED printheads and microfine toner for sharp detail and rich color depth
- **Print Resolution:** 1200 x 600 dpi
- **Duty Cycle:** Up to 45,000 pg./mo.
- **Duplex (2-sided) Printing:** Standard

Productivity Solutions

- **Web-based Printer Management:** PrintSuperVision and OkiLAN® Embedded Web Server
- **PDF Direct Print 1.5:** Receives and prints .pdf files (through version 1.7) without opening an application, enhancing productivity

Security Solutions

- **Network Security:** IP address filtering, IPsec, MAC address filtering

Cost Containment Solutions

- **Job Accounting Software:** Tracks color/mono pages by individual or department
- **Color Access Policy Manager:** Allows control over color printing access and converts unauthorized color print jobs to black & white
- **ECO Mode:** Power-saving, performance-enhancing automatic engine speed adjustment on print jobs requiring 2 or fewer pages

Color Management

- **Utilities:** Color Matching software and Color Correct from OKI Printing Solutions

Compatibility

- **Standard:** PCL® 6; PostScript® 3™; SIDM (IBM® ProPrinter®, Epson® FX)
- **Operating Systems:** Windows® 7, Vista®/ Vista x64, XP/XP x64, Server 2008 R2 x64/2003/2000, Mac® support – OS X 10.3 and higher; UNIX®; Linux; Citrix®
- **Network Protocol:** TCP/IP

Connectivity

- **Network Interface:** OkiLAN® 10/100 Base-T Internal Ethernet Print Server
- **Local Ports:** High-speed USB v2.0

Memory

- **Standard:** 128 MB
- **Maximum:** 640 MB

Typefaces

- **Scalable:** 86 PCL, 80 PostScript
- **Bitmap:** OCR-A, OCR-B; Line Printer
- **Barcode:** 11 + PDF417 and USPS

Paper Handling

- **Paper Input:** 350 sheets standard (250-sheet Main Tray + 100-sheet Multi-Purpose Tray); 880 sheets max. with optional 530-sheet 2nd Paper Tray
- **Multi-Purpose Tray:** 100 sheets – handles card stock, labels, envelopes (max. 10) and banners²
- **Paper Sizes (Min / Max):** Main Tray from 4.1" x 5.8" to 8.5" x 14"; Multi-Purpose Tray from 3" x 5" to 8.5" x 47" banners²; Duplex/Optional 2nd Tray from 5.8" x 8.3" to 8.5" x 14"
- **Paper Weight:** Main Tray/Optional 2nd Tray/ Duplex 17 lb. bond – 65 lb. cover (64 – 176 gsm); Multi-purpose Tray 17 lb. bond – 80 lb. cover (64 – 220 gsm)

Environmental

- **Size (WxDxH):** 16.1" x 19.8" x 9.5" (41.0 cm x 50.4 cm x 24.2 cm)
- **Weight:** Approx. 48.5 lb. (22.0 kg)
- **Power Consumption:** Power Save <14W; Idle 90W; Typical 480W; Peak 1170W
- **Acoustic Noise:** Power Save – inaudible; Standby 37 dB; Operating <52 dB
- **ENERGY STAR® Compliance:** Yes

Supplies

- **Toner Cartridges:** Separate Black, Cyan, Magenta and Yellow
- **Image Drum:** Single unit (CMYK)
- **Toner Cartridge Life:** 3,000 pages Cyan, Magenta, Yellow and 3,500 pages Black³
- **Image Drum Life:** Approximately 20,000 pages⁴

Warranty

- **Printer:** 1-Year limited with Overnight Exchange⁵
- **Digital LED Printheads:** 5-Year limited warranty

¹ Published performance results based on laboratory testing of simplex (1-sided) print speed. Individual results may vary.
² Optimal performance on larger files may require additional RAM.
³ Based on ISO 19798, letter-size pages. Printer ships with 1,000-page "starter" cartridges (CMYK).
⁴ Estimated life, based on 3 pages per job.
⁵ Available in the U.S. and Canada only.

Ordering Information

Description	Part Numbers	
C330dn 120V (Multilingual)	62435103	
C330dn 220V (Multilingual)	62435104	
Options		
530-Sheet 2nd Paper Tray	44472101	
Memory Expansion:		
256 MB	70061801	
512 MB	70061901	
Supplies		
Toner Cartridges:		
Cyan Toner Cartridge	3,000 pg. ³	44469703
Magenta Toner Cartridge	3,000 pg. ³	44469702
Yellow Toner Cartridge	3,000 pg. ³	44469701
Black Toner Cartridge	3,500 pg. ³	44469801
Image Drum Kit:		
Single Image Drum (CMYK)	20,000 pg. ⁴	44494201
OKIcare® Overnight Exchange Warranties⁵		
	U.S.	Canada
C330dn 2-Yr Warranty	38016702	38016712
C330dn 3-Yr Warranty	38016703	38016713
OKIcare® On-Site Warranties⁵		
	U.S.	Canada
C330dn On-Site Upgrade	38016901	38016911
C330dn 2-Yr On-Site Warranty	38016902	38016912
C330dn 3-Yr On-Site Warranty	38016903	38016913
Print Media		
Bright White Proofing Sheets (32 lb.):		
8.5" x 11"	500	52206101
SynFlex™ Paper (Waterproof and Tear-resistant):		
8.5" x 11"	100	52205901
Premium Envelopes (size #10):		
	100	52206301
	500	52206302
Banner Paper (8.5" x 35.4")	100	52206002

For more information on Digital Color Printers and supplies from OKI Printing Solutions, including OKIcare® Extended Service Programs: **800.OKI.DATA (800-654-3282)**.⁵

Specifications are subject to change without notice.

© 2010 Oki Data Americas, Inc. OKI Reg. T.M., M.D. M.R., OKIcare, OkiLAN Reg. T.M., Oki Electric Industry Co., Ltd. Single Pass Color T.M. and design Reg. T.M., Oki Data Corp. HD Color logo, SynFlex, Overnight Exchange logo T.M., Oki Data Americas, Inc. Windows, Vista Reg. T.M., Microsoft Corp. UNIX Reg. T.M., The Open Group. Citrix Reg. T.M., Citrix Systems, Inc. Mac Reg. T.M., Apple Inc. USB-IF logo T.M., Universal Serial Bus Implementers Forum, Inc.



OKI DATA AMERICAS, INC.

USA
 2000 BISHOPS GATE BLVD.
 MOUNT LAUREL, NJ 08054-4620
 TEL: 800.OKI.DATA (800.654.3282)
 FAX: 856.222.5320

CANADA
 4140B SLADEVIEW CRESCENT
 UNITS 7 & 8
 MISSISSAUGA, ONTARIO L5L 6A1
 TEL: 905.608.5000
 FAX: 905.608.5040

LATIN AMERICA
 2000 BISHOPS GATE BLVD.
 MOUNT LAUREL, NJ 08054-4620
 TEL: 856.231.0002
 FAX: 856.222.5071

OKI DATA DE MÉXICO, S.A. DE C.V.
 MARIANO ESCOBEDO, 748 8º PISO
 COL. NUEVA ANZURES C.P. 11590
 MÉXICO, D.F.
 TEL: 55.5263.8780
 FAX: 55.5250.3501

OKI DATA DO BRASIL INFORMÁTICA LTDA.
 AV. ALFREDO EGÍDIO DE SOUZA ARANHA, 100
 BLOCO C – 4º ANDAR
 04726-170 – SÃO PAULO – SP – BRASIL
 TEL: 11.3444.3500
 FAX: 11.3444.3502

WWW.OKIPRINTINGSOLUTIONS.COM