

C331dn/C531dn

**OKI**<sup>®</sup>



The fast, high-quality, energy-efficient color printers designed for your business or small workgroup



## OKI and The Environment

- ENERGY STAR<sup>®</sup> Compliant** Superior energy efficiency
- Toner Save Mode** Extends life of toner cartridges
- Duplex (2-sided) Printing** Saves energy and resources
- Automatic ECO Mode** Lowers power to save energy
- 1-Piece Image Drum** Fewer consumables to replace
- Deep-Sleep Mode** Reduces power to less than 1.5 watts







## The C331dn and 531dn from OKI deliver exceptional advantages in productivity and media flexibility.

### Highlights:

- HD Color printing technology for sharp detail and rich, dramatic color
- Prints banner-size sheets up to 52"<sup>2</sup>
- Up to 1200 x 600 dpi resolution
- 350-sheet standard paper capacity; expands to 880 sheets with optional 2nd paper tray
- Windows<sup>®</sup> and Mac<sup>®</sup> compatibility
- Low profile: just 9.5" in height
- ENERGY STAR<sup>®</sup> compliant
- 3-Year Carry-In/Depot limited warranty on printer<sup>3</sup>; 5-Year limited warranty on LED printheads
- Live, toll-free technical support 24/7/365<sup>3</sup>



**For small businesses and workgroups demanding superior quality at an affordable price, OKI brings you C331dn and C531dn Digital Color printers.**

Network-ready, they combine fast printing speeds, incredible print quality, duplex (2-sided) printing standard, the ability to print on a wide variety of media, and the legendary reliability of OKI products, backed by industry-leading support.

**HD Color Printing technology** – Both printers utilize this unique OKI process for breathtaking output. HD Color Printing technology combines multi-level LED printheads and microfine toner for precise toner placement; deep, saturated colors; and fine detail on regular copy paper and glossy media.

**Exceptional paper handling** – The C331dn and C531dn both have a standard paper capacity of 350 sheets: a 250-sheet paper tray plus built-in 100-sheet multi-purpose tray for labels, envelopes, transparencies, and thicker media up to 80 lb. cover (220 gsm). They can print everything from 3" x 5" cards to banner-size sheets up to 8.5" x 52"<sup>2</sup>.

And their paper capacity expands to 880 sheets with an optional 530-sheet 2nd tray.

**Perfect for virtually any printing environment** – The versatile C331dn and C531dn both work beautifully in the most popular operating system environments. They come with PCL<sup>®</sup> 6, PCL 5c and PostScript<sup>®</sup> 3<sup>™</sup> emulations, for professional-looking text and graphics.

**Unmatched warranty support** – We're so confident in the reliability of the C331dn and C531dn that we provide an industry-leading 5-year warranty on their printheads, and a 3-year Carry-In/Depot limited printer warranty and optional coverage extensions.<sup>3</sup>

If you need technical assistance, you can speak to a live OKI expert located in North America by calling **800.OKI.DATA** (800.654.3282) at any time.<sup>3</sup>

**If you need high-speed, highly flexible printers to increase the productivity of your business or small workgroup, the compact C331dn and C531dn color printers from OKI are your ideal choice.**

### Additional Highlights:

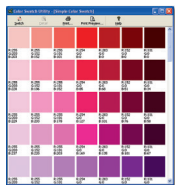
	C331dn	C531dn
Print Speed <sup>1</sup>	23 ppm Color, 25 ppm Mono	27 ppm Color, 31 ppm Mono
Time to First Page <sup>1</sup>	9.0 sec. Color, 8.5 sec. Mono	8.0 sec. Color, 7.5 sec. Mono
Toner Capacity	3,000-pg. CMY, 3,500-pg. Black	5,000-pg. CMYK
Memory (Standard / Max)	128 MB / 640 MB	256 MB / 768 MB
Document Storage Memory	N/A	16 GB SD Card (optional)
Duplex (2-Sided) Printing	Standard	
Processor	532 MHz Power PC CPU	
Connectivity	High-speed USB 2.0, 10/100 Base-TX Network	
Emulations	PCL <sup>®</sup> 5c, PCL 6, PostScript <sup>®</sup> 3 <sup>™</sup>	
Size (WxDxH)	16.1" x 19.8" x 9.5" (410 mm x 504 mm x 242 mm)	

# The C331dn and C531dn also give you better control over your color printing, business expenses, and impact on the environment.

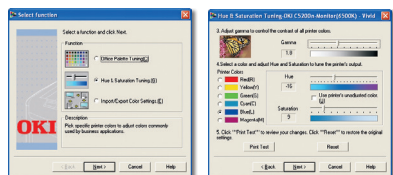
**Digital Color printers from OKI deliver more than brilliant output at best-in-class speeds** – The C331dn and C531dn also offer a long list of features that can improve your image, profitability and peace of mind:

## Control the quality of your output

**Color Swatch** Select the color swatches that match your target and simply use their RGB or CMYK values while creating your document to ensure matching colors. Customize a swatch by setting the Hue, Saturation and Lightness to target your custom color.



**Color Correct** Makes it easy to adjust colors commonly found in applications like Microsoft® Word, Excel® and PowerPoint®. It also lets you adjust the overall color of a print by controlling the lightness, darkness and contrast of images, and the intensity and lightness of the colors.



## Control your printing costs

**Print Job Accounting Software** Enables tracking of color and mono printing costs, easy monitoring of printing activity, and greater control of printer usage. It generates reports for administrative, bill-back or cost-accounting purposes. User permissions can be assigned and are stored on the printer, so the system is totally secure.

An important feature of Print Job Accounting is the use of color printing restrictions. This lets you control and monitor color usage by defining who can print and what gets printed, making color printing cost-effective. Decide who and what can print in color, in black & white or not at all. Access levels can be assigned by user name, application, file name and web sites. Once policies are configured, the printer determines how—or if—incoming jobs will print. All policies are password-protected for added security.



HD Color Printing



Crisp, clear Black & White



No printout permitted

## Control your effect on the planet's health

The C331dn and C531dn offer a number of environmentally friendly features, including:

**Duplex (2-sided) printing** It's standard on the C331dn and C531dn. Use both sides of a sheet rather than two sheets. Saves paper—and is even more energy-efficient.

**Automatic ECO Mode** These printers optimize the print time for small jobs, using less energy. Same terrific output, faster throughput, lower power consumption. Everybody wins.

**Deep sleep mode** When left on for an extended period, the C331dn and C531dn slip into this mode, which uses less than 1.5 watts of power.

**One-piece image drum** This long-lasting, user-replaceable consumable remains friendly to your budget while lowering the number of items to dispose of and store.

**ENERGY STAR® compliance** With their lower power consumption—especially in Deep sleep mode—and standard duplexing, these printers meet the government's standards for energy efficiency.

## THE C331dn and C531dn AT A GLANCE

Single Pass Color™ digital LED technology delivers high speed and reliability

C531dn – up to 27 ppm Color, 31 ppm Mono;  
C331dn – up to 23 ppm Color, 25 ppm Mono<sup>1</sup>

Base printer models just 9.5" high

PCL® 6, PCL 5c and PostScript® 3™ emulations

100-sheet multi-purpose tray

Duplex (2-sided) printing, standard

Duty cycle: C531dn – 60,000 pg./mo.;  
C331dn – 45,000 pg./mo.

Optional 530-sheet 2nd paper tray

Small footprint enables printers to fit comfortably on the desktop

Separate Cyan, Magenta, Yellow and Black CMYK toner cartridges

HD (High Definition) Color Printing technology

16-character, backlit LCD screen display with toner status gauge

Power Save button; Deep sleep mode uses <1.5W power

Prints on sheets up to 80 lb. cover (220 gsm) and banners up to 8.5" x 52"<sup>2</sup>

250-sheet standard paper tray



<sup>1</sup> Published performance results based on laboratory testing of simplex (1-sided) print speed. Individual results may vary.

<sup>2</sup> Optimal performance on larger files may require additional RAM.

<sup>3</sup> Available in the U.S. and Canada only.



# C331dn/C531dn

## Specifications

### Performance

- **Print Speed:** C331dn – up to 23 ppm Color/ 25 ppm Mono; C531dn – up to 27 ppm Color/ 31 ppm Mono<sup>1</sup>
- **Time to First Page:** C331dn – 9 sec. Color, 8.5 sec. Mono; C531dn – 8 sec. Color, 7.5 sec. Mono<sup>1</sup>
- **Processor:** 532 MHz PowerPC CPU
- **HD Color Printing Technology:** Combines multilevel LED printheads and microfine toner for sharp detail and rich color depth
- **Print Resolution:** Up to 1200 x 600 dpi
- **Duty Cycle:** C331dn – up to 45,000 pg./mo.; C531dn – up to 60,000 pg./mo.
- **Duplex (2-sided) Printing:** Standard

### Productivity Solutions

- **Web-based Printer Management:** PrintSuperVision and OKiLAN<sup>®</sup> Embedded Web Server
- **PDF Direct Print:** Receives and prints .pdf files (through version 1.7) without opening an application, enhancing productivity

### Security Solutions

- **Encrypted Secure Printing (C531dn only):** PIN/password-enabled; AES 256-bit encryption; Message Authentication Code (MAC)
- **Network Security:** IP address filtering, IPsec, MAC address filtering

### Cost Containment Solutions

- **Print Job Accounting Software:** Tracks color/mono pages by individual or department; allows control over color printing access and converts unauthorized color print jobs to black & white
- **ECO Mode:** Power-saving, performance-enhancing automatic engine speed adjustment on print jobs requiring 2 or fewer pages

### Color Management

- **Utilities:** Color Matching software and Color Correct from OKI

### Compatibility

- **Printer Languages:** PCL<sup>®</sup> 6, PCL 5c; PostScript<sup>®</sup> 3<sup>™</sup>; IBM<sup>®</sup> ProPrinter<sup>®</sup>, Epson<sup>®</sup> FX
- **Operating Systems:** Microsoft<sup>®</sup> Windows<sup>®</sup> 8 Windows 7, Windows Vista<sup>®</sup>, Windows XP Home/XP Professional, Windows Server 2008, Server 2008 R2, Server 2003; Mac<sup>®</sup> OS X 10.5 and higher
- **Network Protocols:** TCP/IP – IPv4/v6, LPR, HTTP(PP), DHCP, SNMPv1/v3, DNS, DDNS, UPnP, Bonjour<sup>®</sup>, WINS, SSL/TLS, SMTP, POP3, SNT, WSDPrint; support for Netware<sup>®</sup> and AppleTalk<sup>®</sup>

### Connectivity

- **Network Interface:** 10/100 Base-TX Ethernet
- **Local Ports:** High-speed USB v2.0

### Memory

- **Standard:** C331dn – 128 MB; C531dn – 256 MB
- **Maximum:** C331dn – 640 MB; C531dn – 768 MB
- **Memory Storage:** Optional 16 GB SD Memory Card (C531dn only)

### Typefaces

- **Scalable:** 86 PCL, 80 PostScript
- **Bitmap:** OCR-A, OCR-B; Line Printer
- **Barcode:** 11 + PDF417; USPS

### Paper Handling

- **Paper Input:** 350 sheets standard (250-sheet Main Tray + 100-sheet Multi-purpose Tray); 880 sheets max. with optional 530-sheet 2nd Paper Tray
- **Multi-purpose Tray:** 100 sheets – handles card stock, labels, envelopes (max. 10) and banners
- **Paper Sizes (Min / Max):** Main Tray from 4.1" x 5.8" to 8.5" x 14"; Multi-purpose Tray from 3" x 5" to 8.5" x 52" banners<sup>3</sup>; Duplex/Optional 2nd Tray from 5.8" x 8.3" to 8.5" x 14"
- **Paper Weight:** Main Tray/Optional 2nd Tray/ Duplex 17 lb. bond – 65 lb. cover (64 – 176 gsm); Multi-purpose Tray 17 lb. bond – 80 lb. cover (75 – 220 gsm)

### Environmental

- **Size (WxDxH):** 16.1" x 19.8" x 9.5" (410 mm x 504 mm x 242 mm)
- **Weight:** Approx. 48.5 lb. (22.0 kg)
- **Power Consumption:** Auto-Off <0.5W; Deep sleep mode <1.5W; Power Save <14W; Idle 90W; Typical – C331dn 480W, C531dn 540W; Peak 1170W
- **ENERGY STAR<sup>®</sup> Compliance:** Yes
- **Acoustic Noise:** Operating – 54 dBA or less; Standby – 37 dBA or less; Power Save – inaudible

### Supplies

- **Toner Cartridges:** Separate Cyan, Magenta, Yellow and Black
- **Image Drum:** Single unit (CMYK) Approx. 20,000 pages
- **Toner Cartridge Life:** Both models – 3,000-pg. CMY, 3,500-pg. Black; C531dn only – High-Capacity 5,000-pg. CMYK<sup>4</sup>
- **Image Drum Life:** Approx. 20,000 pages<sup>5</sup>

### Warranty

- **Printer:** 3-Year Carry-In/Depot limited warranty<sup>6</sup>
- **Digital LED Printheads:** 5-Year limited warranty

<sup>1</sup> Published performance results based on laboratory testing of simplex (1-sided) print speed. Individual results may vary.

<sup>2</sup> Requires optional SD memory card.

<sup>3</sup> Optimal performance on larger files may require additional RAM.

<sup>4</sup> Based on ISO 19798, letter-size pages, 5,000-page High-Capacity toner for C531dn only. C331dn ships with 1,000-page and C531dn ships with 2,000-page "starter" cartridges (CMYK).

<sup>5</sup> Estimated life, based on 3 pages per job.

<sup>6</sup> Available in the U.S. and Canada only.

## Ordering Information

Description	Part Numbers	
C331dn 120V (Multilingual)	62443601	
C531dn 120V (Multilingual)	62443701	
<b>Options</b>		
530-sheet 2nd Paper Tray	44472101	
Memory Expansion		
256 MB	70061801	
512 MB	70061901	
16 GB SD Memory Card (C531dn only)	70061701	
<b>Supplies</b>		
<b>Toner Cartridges:</b>		
Cyan Toner Cartridge	3,000 pg. <sup>4</sup>	44469703
Magenta Toner Cartridge	3,000 pg. <sup>4</sup>	44469702
Yellow Toner Cartridge	3,000 pg. <sup>4</sup>	44469701
Black Toner Cartridge	3,500 pg. <sup>4</sup>	44469801
<b>High-Capacity Toner Cartridges (C531dn only):</b>		
Cyan Toner Cartridge	5,000 pg. <sup>4</sup>	44469721
Magenta Toner Cartridge	5,000 pg. <sup>4</sup>	44469720
Yellow Toner Cartridge	5,000 pg. <sup>4</sup>	44469719
Black Toner Cartridge	5,000 pg. <sup>4</sup>	44469802
<b>Image Drum Kit:</b>		
Single Image Drum (CMYK)	20,000 pg. <sup>5</sup>	44494201
<b>OKIcare<sup>®</sup> Warranties<sup>6</sup></b>		
	<b>U.S.</b>	<b>Canada</b>
<b>3-Year Exchange Warranty/ 2-3 Day Delivery</b>		
C331dn	30835208	38035218
C531dn	30835408	38035418
<b>3-Year Overnight Exchange Warranty</b>		
C331dn	38035203	38035213
C531dn	38035403	38035413
<b>3-Year On-Site Warranty</b>		
C331dn	38035303	38035313
C531dn	38035503	38035513
<b>Print Media</b>		
<b>Sheets Per Box</b>		
Bright White Proofing Sheets (32 lb.):		
8.5" x 11"	500	52206101
Premium Card Stock (8.5" x 11"):		
60 lb. Cover	250	52205601
90 lb. Index	250	52205602
110 lb. Index	250	52205603
SynFlex <sup>™</sup> Paper (Waterproof and Tear-resistant):		
8.5" x 11"	100	52205901
Premium Envelopes (size #10):		
	100	52206301
	500	52206302
Banner Paper (8.5" x 35.4")		
	100	52206002

For more information on Digital Color Printers and supplies from OKI, including OKIcare<sup>®</sup> Extended Service Programs: **1.800.OKI.DATA** (800.654.3282).<sup>6</sup>

## OKI DATA AMERICAS, INC.

**USA**  
2000 BISHOPS GATE BLVD.  
MOUNT LAUREL, NJ 08054-4620  
TEL: 800.OKI.DATA (800.654.3282)  
FAX: 856.222.5320

**CANADA**  
4140B SLADEVIEW CRESCENT  
UNITS 7 & 8  
MISSISSAUGA, ONTARIO L5L 6A1  
TEL: 905.608.5000  
FAX: 905.608.5040

**LATIN AMÉRICA**  
2000 BISHOPS GATE BLVD.  
MOUNT LAUREL, NJ 08054-4620  
TEL: 856.231.0002  
FAX: 856.222.5071

**OKI DATA DE MÉXICO, S.A. DE C.V.**  
MARIANO ESCOBEDO, 748 8<sup>º</sup> PISO  
COL. NUEVA ANZURES C.P. 11590  
MÉXICO, D.F.  
TEL: 55.5263.8780  
FAX: 55.5250.3501

**OKI DATA DO BRASIL INFORMÁTICA LTDA.**  
AV. ALFREDO EGÍDIO DE SOUZA ARANHA, 100  
BLOCO C – 4<sup>º</sup> ANDAR  
04726-170 – SÃO PAULO – SP – BRASIL  
TEL: 11.3444.3500  
FAX: 11.3444.3502

## WWW.OKIDATA.COM

Specifications are subject to change without notice.

© 2013 Oki Data Americas, Inc. OKI Reg. T.M., OKIcare Reg. T.M., Oki Electric Industry Co., Ltd. High Definition Color logo, Single Pass Color logo Reg. T.M., Oki Data Corp. SynFlex T.M., Oki Data Americas, Inc. Windows, Vista Reg. T.M., Microsoft Corp. Mac, Bonjour, AppleTalk Reg. T.M., Apple Inc. PCL Reg. T.M., Hewlett-Packard Corp. PostScript Reg. T.M., PostScript 3 T.M., Adobe Systems, Inc. NetWare Reg. T.M., Novell, Inc. IBM, ProPrinter Reg. T.M., IBM Inc. Epson Reg. T.M., Seiko Epson Corp. USB-IF logo T.M. Universal Serial Bus Implementers Forum, Inc. ENERGY STAR Reg. T.M., U.S. EPA.

Printed in the USA

MS16069-0513



# OKI<sup>®</sup>