

MPS711c

OKI[®]



Breathtaking HD Color quality and cost-saving print controls for improved workgroup printing performance



OKI and The Environment

- Toner Save Mode** Reduces amount of consumables used
- Duplex (2-sided) Printing** Saves energy and resources
- Low Power Consumption** Takes less energy to operate

MPS
series.





The MPS711c from OKI quickly delivers high-quality output on a wide range of media – including card stock and banners up to 52 inches in length.

Highlights:

- HD Color Printing technology for sharp detail and rich, dramatic color
- Fast print speeds: color output at up to 34 ppm; black & white at 36 ppm¹
- Time to first page as fast as 9 seconds color, 8 seconds black & white¹
- 1200 x 600 dpi resolution for crisp, clear output in color and black & white
- 630-sheet standard paper capacity, expandable to 1,690 sheets max with optional 2nd and 3rd paper trays
- PCL® 6, PCL 5c and PostScript® 3™ emulations; support for Windows® Vista® XPS and PDF 1.7 Direct Print² technologies
- Network, USB and Parallel connectivity
- Color Access Policy Manager (CAPM) to help control printing costs
- Single Pass Color™ technology for printing up to 140 lb. (250 gsm) index stock and banner-size sheets
- Eco-friendly features to support green initiatives
- 2-piece consumables for low Total Cost of Ownership in color and black & white³
- Optional security features including data encryption and password protection²

For high-impact documents and improved workgroup performance—along with tighter control over your printing costs and security—look to the MPS711c – It's perfect for your medium-to-large workgroup.

Fast printing for increased productivity – With print speeds of up to 34 ppm in color, 36 ppm in black & white, and a time to first color page of 9 seconds,¹ the MPS711c keeps work flowing productively.

Unique HD (High Definition) Color technology – For print quality that visibly enhances your documents, the MPS711c uses HD Color printing technology.

This combines OKI's multilevel LED printheads, unique microfine toner, a straight-through paper path, and enhanced color software to provide greater depth of detail and color with a high gloss finish even on ordinary office paper.

Print a range of document sizes and formats with ease – Single Pass Color™ technology and the MPS711c's straight-through paper path will easily handle media up to 140 lb. index (250 gsm), as well as envelopes and banners. The 2-sided printing capability of the optional duplex unit saves time and supplies.

Print letter- and legal-size sheets for day-to-day requirements—in breathtaking color or crisp black & white. Should you need to print postcards, CD labels, even banners up to 52 inches in length, you can produce them all in-house.

Breathtaking HD Color quality and cost-saving print controls for improved workgroup printing performance. Expect more from the MPS711c from OKI.

Control your color output, security and bottom line.

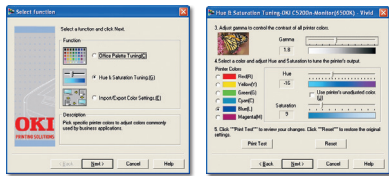
The MPS711c color printer from OKI delivers brilliant output at high speeds. It also offers a long list of features that can improve your image, profitability and peace of mind. Here are some value-added examples:

CONTROL the quality of your output

Color Swatch Easily match custom colors to the color values on your MPS711c printer. Select a simple swatch to print a basic set of colors, then match the values in your application. Select a custom swatch and set the Hue, Saturation and Lightness to target your custom color.



Color Correct Makes it easy to adjust colors commonly found in applications such as Microsoft® Word, Excel® and PowerPoint®. It also lets you adjust the overall color of a print by controlling the lightness, darkness and contrast of images, and intensity and lightness of colors.



CONTROL your printing costs

Color Access Policy Manager (CAPM) Lets you control and monitor color usage by defining who can print and what gets printed. Decide who and what can print in color, in black & white or not at all, making color printing cost-effective. Access levels can be assigned by user name, PC/server name, application, file name and web sites. Once policies are configured, CAPM determines how—or if—incoming jobs will print. All policies are password-protected for added security.



HD Color Printing

Crisp, clear Black & White

No printout permitted

Job Accounting Enables tracking of color and mono printing costs, easy monitoring of printing activity, and greater control of printer usage. It generates reports for administrative, bill-back or cost-accounting purposes. User permissions can be assigned and are stored on the printer—not on the network—so the system is totally secure.

CONTROL the degree of your security

Equipped with the optional 16 GB SD memory card, the MPS711c provides enhanced security features that include Encrypted Secure Print:

- **256-Bit Encryption** Enables secure passage of sensitive documents from PC to printer, with processing and output requiring PIN identification.
- **Job Timeout** If not retrieved within a certain time (pre-set by the user), the document is sanitized (cleared) from the unit's memory.
- **MAC Validation** The Message Authentication Code (MAC) is PC-encrypted into a document's printing data to prevent the file from being tampered with after it is sent to the printer. The printer reads the code and, if any alterations to the file are detected, issues a warning and cancels the job.

THE MPS711c AT A GLANCE

LCD screen display with gauge to show toner status

34 ppm color and 36 ppm mono print speed¹

100-sheet multi-purpose tray

Single Pass Color™ technology delivers high speed and reliability

Print on sheets up to 250 gsm, banners up to 8.5" x 52"

530-sheet main paper tray

Optional 530-sheet 2nd paper tray

HD (High Definition) Color printing technology

Optional duplexer for 2-sided printing

11,500-page color (CMY) and 11,000-page Black toner cartridges³

256 MB standard memory, 768 MB max.

100,000 pages-per-month duty cycle

Optional 530-sheet 3rd paper tray (for 1,690-sheet max. paper capacity)



¹ Published performance results based on laboratory testing. Individual results may vary.

² Requires optional SD memory card.

³ Based on ISO 19798. Printer ships with 4,000-page "starter" toner cartridges.

MPS711c

Specifications

Performance

- **Print Speed:** Up to 34 ppm Color; up to 36 ppm Black & White¹
- **Time to First Page:** As fast as 9 sec. Color; 8 sec. Black & White¹
- **Processor:** 533 MHz
- **HD Color Printing Technology:** Combines multilevel LED printheads and microfine toner for sharp detail and rich color depth
- **Print Resolution:** 1200 x 600 dpi
- **Duty Cycle:** Up to 100,000 pg./mo.
- **Duplex (2-Sided) Printing:** Optional

Productivity Solutions

- **Web-based Printer Management:** PrintSuperVision and OkiLAN® Embedded Web Server
- **PDF Direct Print v1.7:** Receives and prints .pdf files through version 1.7 without opening an application, enhancing productivity² (Windows® environment only)
- **Windows® Vista® XPS:** Support for embedded XML Paper Specification (XPS)

Security Solutions²

- **Encrypted Secure Printing:** PIN/password-enabled; AES 256-bit encryption; Message Authentication Code (MAC)
- **Network Security:** IP address filtering, MAC address filtering, SNMP v3, SSL/TLS, IPP over SSL/TLS, E-mail authentication, Protocol lockouts

Cost Containment Solutions

- **Job Accounting Software:** Track color/monochrome pages by individual or department (SD memory card required for optimal functionality)
- **Color Access Policy Manager:** Allows control over color printing access, and converts unauthorized color print jobs to black & white

Color Management

- **Utilities:** Color Matching software and Color Correct from OKI

Compatibility

- **Emulations:** PCL® 6, PCL 5c; PostScript® 3™; IBM® ProPrinter®; Epson® FX; Windows Vista XPS; PDF Direct Print v1.7²
- **Operating Systems:** Standalone and network – Windows 7, Vista/Vista x64, XP Home/XP Professional/XP x64, Server 2008 R2 x64, Server 2003/2003 x64, Server 2000; Mac® support – OS X 10.3 and higher
- **Network Protocols:** TCP/IP, NetBEUI, NetWare®, EtherTalk

Connectivity

- **Network Interface:** 10 Base-T/100 Base-TX Internal Ethernet Print Server
- **Local Ports:** USB v2.0, Parallel

Memory

- **Standard:** 256 MB
- **Maximum:** 768 MB
- **Memory Storage:** Optional 16 GB SD Memory Card

Resident Typefaces

- **Scalable:** 90 MonoType and 80 PostScript fonts
- **Bitmap Fonts:** OCR-A/B
- **Barcode:** USPS, UPC-A/E, Code 39/128, EAN/JAN-8, EAN/JAN-13, EAN/UCC-128, Interleaved 2 of 5, CodaBar, ZIP+4 PostNet®

Paper Handling

- **Paper Input:** 630 sheets standard (530-sheet Legal/Letter/Universal Main Tray + 100-sheet Multi-Purpose Tray); 1,690 sheets max. (with optional 530-sheet 2nd and 3rd Paper Trays)
- **Multi-Purpose Tray:** Standard 100-sheet; handles overhead transparencies, envelopes, mailing label stock, and banners
- **Paper Sizes (Min./Max.):** Main Tray, standard/optional 2nd Tray and optional 3rd Tray – 5.8" x 8.3" to 8.5" x 14"; Multi-Purpose Tray – 3" x 5" to 8.5" x 52" banner; Duplex – 5.8" x 8.3" to 8.5" x 14"
- **Paper Weight:** Main/2nd/3rd Tray 17 lb. bond – 120 lb. index (64 – 220 gsm); Multi-Purpose Tray 17 lb. bond – 140 lb. index (64 – 250 gsm); duplex 17 lb. – 120 lb. index (64 – 220 gsm)

Environmental

- **Size (WxDxH):** 17.1" x 21.5" x 15.3" (43.5 cm x 54.7 cm x 38.9 cm)
- **Weight:** Approx. 60.8 lb. (27.6 kg)
- **Power Consumption:** Idle 100W, Typical 600W, Peak 1300W, Power Save <1.2W (approx. 1.0W)
- **Acoustics:** Operating ≤54.0 dB(A); Standby ≤37.0 dB(A)

Supplies

- **Toner Cartridges and Image Drums:** Separate Black, Cyan, Magenta and Yellow
- **Toner Cartridge Life:** 11,500 pages Cyan, Magenta and Yellow; 11,000 pages Black³
- **Image Drum Life:** Approximately 20,000 pages⁴

Ordering Information

Description	Part Numbers	
	Sheets Per Box	
Bright White Proofing Sheets (32 lb.): 8.5" x 11"	500	52206101
Premium Color Transparency Film 60 lb. Cover	50	52205701
Premium Card Stock (8.5" x 11"): 90 lb. Index	250	52205601
110 lb. Index	250	52205602
SynFlex™ Paper (Waterproof and Tear-resistant): 8.5" x 11"	100	52205901
Premium Envelopes (size #10):	100	52206301
	500	52206302
Banner Paper (8.5" x 35.4")	100	52206002

MPS
series.



¹ Published performance results based on laboratory testing. Individual results may vary.

² Requires optional SD memory card.

³ Based on ISO 19798. Printer ships with a complete set of 4,000-page "starter" toner cartridges.

⁴ Estimated life, based on 3 pages per job.

Specifications are subject to change without notice.

Featured products may not be available in all countries. Please contact your local office for regional availability.

© 2014 Oki Data Americas, Inc. OKI Reg. T.M., M.D. M.R., OKIcare, Reg. T.M., Oki Electric Industry Co., Ltd. High Definition Color logo T.M., Single Pass Color T.M. and design Reg. T.M., Oki Data Corp. SynFlex, Overnight Exchange logo T.M., Oki Data Americas, Inc. PCL Reg. T.M., Hewlett Packard Co. Microsoft, Windows, Vista, PowerPoint, Excel Reg. T.M., Microsoft Corp. PostScript Reg. T.M., PostScript 3 T.M., Adobe Systems, Inc. Mac Reg. T.M., Apple Inc. USB-IF logo T.M., Universal Serial Bus Implementers Forum, Inc.

Printed in the USA

MS16015-0114

USA

2000 BISHOPS GATE BLVD.
MOUNT LAUREL, NJ 08054-4620
TEL: 800.OKI.DATA (800.654.3282)
FAX: 856.222.5320

WWW.OKIDATA.COM

CANADA

4140B SLADEVIEW CRESCENT
UNITS 7 & 8
MISSISSAUGA, ONTARIO L5L 6A1
TEL: 905.608.5000
FAX: 905.608.5040

OKI
Open up your dreams