

# Olympus® II Mail Sorting Solutions

## Superior Sorting: It's Not Just the Speed, It's the Handling

The Olympus® II solution is designed and built to provide superior handling of your incoming and outgoing mail. Its advanced transport and controls help ensure the highest possible sorting efficiency while protecting each and every mail piece from damage.

### Speed Your Feeds and Stay in Control

The Olympus II feeder has a separate servo drive motor system that maintains a consistent gap between pieces. This increases throughput and reduces those vexing double-feeds.

Thanks to its high-speed servo motors and friction stripper rings, the Olympus II solution effectively feeds a wide range of mail pieces from postcards to six millimeter-thick, 6"x 9" envelopes.

An optional Doubles Detector – a camera-based system that detects doublefeeds – is also available. You can add this option at purchase, or as an on-site add-on later.

Operators can precisely control belt speeds to handle difficult mail streams. Instead of artificially lowering system input by increasing the gaps between

mail pieces, the Olympus II solution has true variable speed control, ranging from zero to full speed.

Thicker mail can be controlled with a special "Thick Mail" button that optimizes the feeder for these pieces. Operators can "set and forget" because the Olympus II solution can process the entire mail spectrum without further manual adjustments.

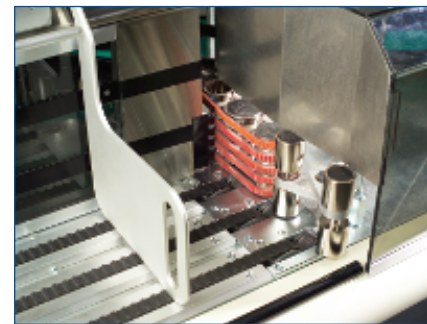
### Fewer Curls and Jams

The Olympus II transport is designed to move mail with more precision, less damage.

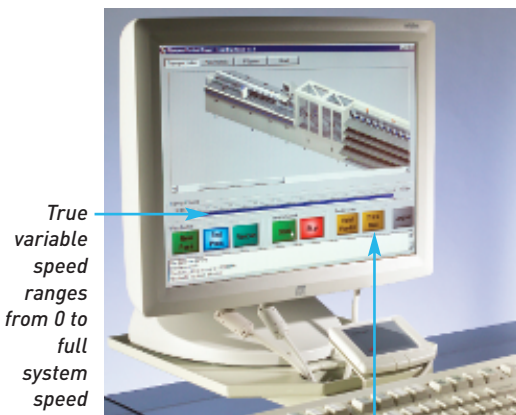
After passing through the feeder, the pieces move through a settling area that allows mail to settle on the transport surface to ensure that mail is level prior to image capture and barcode spraying. The settling area

releases the horizontal pinch on the mail piece's bottom to justify the piece without curling its bottom edge.

A centralized drive system maintains a uniform speed throughout the transport. This eliminates unexpected speed changes that can cause jamming and slippage during the critical OCR reading and printing stages.



Feeder controlled by precise, high-speed servo motor



True variable speed ranges from 0 to full system speed

Optimize thick mail processing without making manual adjustments

### SPECIAL MAIL TYPES? RUN THEM THROUGH...

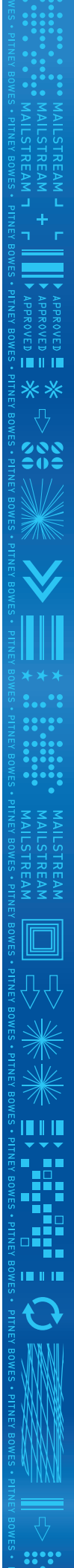
**MAIL THAT'S TALL** rides between guide rails designed just for taller, thinner pieces to prevent fall-overs that could possibly cause jams.

**MAIL THAT'S HEAVY** benefits from upstream pocket diverters that prevents it from pushing through. Backing plates keep heavy mail upright and properly stacked.

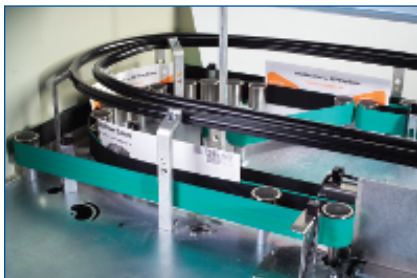
**MAIL THAT'S THIN** is protected by a settling section that releases the horizontal pinch on the mail piece bottom to justify and align the piece without curling the bottom.

**MAIL WITH WINDOWED ENVELOPES** that run on the Multi Tier system are stacked into pockets with the window side facing out. The following piece then stacks against the smooth back side of the preceding envelope, helping to prevent jams.

**MAIL THAT'S RIGID** stays flat with the largest turn radius in the industry, helping to prevent damage to envelope contents.



# Olympus® II Mail Sorting Solutions



Large turn radius accommodates thick, rigid mail.

## MULTI TIER SPECIFICATIONS

The Pitney Bowes Olympus® II Multi Tier System can process the entire First-Class Mail® letter spectrum as defined by the USPS® Domestic Mail Manual (DMM) regulations.

### MINIMUM ENVELOPE SIZE

**Length:** 127mm/5"

**Height:** 89mm/3.5"

**Thickness:** .18mm/.007"

**Weight:** 2g/.07oz

### MAXIMUM ENVELOPE SIZE

**Length:** 298mm/11.75"

**Height:** 178mm/7"

**Thickness:** 6.4mm/.25"

**Weight:** 113.4g/4oz

## SINGLE TIER SPECIFICATIONS

The Pitney Bowes Olympus® II Single Tier System can process First-Class Mail® letter and machineable flat mail.

### MINIMUM ENVELOPE SIZE

**Length:** 127mm/5"

**Height:** 89mm/3.5"

**Thickness:** .18mm/.007"

**Weight:** 2g/.07oz

### MAXIMUM ENVELOPE SIZE

**Length:** 330mm/13"

**Height:** 254mm/10"

**Thickness:** 6.35mm/.25"

**Weight:** 250g/8.8oz

Getting more details is easy to handle.  
Simply call **877-536-2736** today.

These are just a few of many advanced features in **Olympus II** that protect your mail. We're eager to show you more.  
Get in touch with your Pitney Bowes representative today

Pitney Bowes has the software, services and hardware for end-to-end mailstream solutions that integrate and optimize the flow of mail, documents and packages across a range of business operations.

Pitney Bowes, the Corporate Design and Olympus are registered trademarks and Engineering the flow of communication is a trademark of Pitney Bowes Inc. First-Class Mail and USPS are registered trademarks of the United States Postal Service.

First-Class Mail and USPS are registered trademarks of the United States Postal Service.



Pitney Bowes Inc.  
37 Executive Drive  
Danbury, CT 06810-4148  
Tel: 877.536.2736  
203.792.1600  
Web: [www.pbdmt.com](http://www.pbdmt.com)

For more information contact your local Pitney Bowes office or call toll-free at **1 877-536-2736**.

AD11821 0207 ©2007 Pitney Bowes Inc.  
All rights reserved. An Equal Opportunity Employer.  
Printed in USA

