

B&W Multifunction Laser Printer

RICOH
imagine. change.

RICOH SP 3710SF SP 3710DN

✔ Printer ✔ Copier ✔ Facsimile ✔ Scanner



SP 3710SF

34 ppm monochrome

SP 3710DN

34 ppm monochrome

Meet every need, every budget

You're big on ambition, but short on budget. Make the most of both with the RICOH SP 3710SF multifunction printer (MFP) or SP 3710DN printer. Use these compact, affordable devices to perform everyday tasks with speed, reliability and versatility without breaking the bank. Produce up to 34 black-and-white pages per minute (ppm) for fast, productive everyday printing. Choose the SP 3710SF to manage and share your best ideas via standard copy, scan and fax capabilities. Use your smartphone, tablet or laptop for mobile printing. Set up with fast, easy configuration tools and multiple network connectivity options. And, maximize uptime and your budget with the high-yield, All-in-One (AIO) print cartridge.

Work in a small space

Game-changing ideas can come from anywhere. All you need are the right connections. Designed specifically to address the unique needs of today's small offices and workgroups, the SP 3710 Series offers multiple connectivity options to simplify the way you work. Place the compact device on countertops, desktops or shelves with standard USB 2.0 and Ethernet interfaces. Or, choose USB Wi-Fi® 2.4GHz wireless connectivity and avoid the hassles of cables and cords entirely. Make driver setup and configurations easy for Windows and iOS users via the Auto Print Driver tool.



Work at a steady pace

Timing is everything. With print speeds up to 34 ppm, you can use the SP 3710 Series to move more information — and handle more jobs — without taxing your budget or resources. Equipped with a powerful controller and extensive memory, the devices can manage multiple jobs simultaneously, making it ideal for smaller workgroups of busy professionals. Check settings and release jobs easily via the 4-line LCD control panel on the SP 3710DN printer. You can even add watermarks, combine pages and create covers to enhance your business documents. With the SP 3710SF MFP, users can take advantage of the larger 4.3 inch color touchscreen to tap into even more information and assign shortcuts to common tasks quickly.



Work from anyplace

You're always moving. With the SP 3710 Series, you're always productive, too. Download the RICOH Smart Device Connector app to your smartphone, tablet or laptop to access and share information even when you're away from the office. Send print jobs directly to the printer or MFP from your personal mobile device for fast, convenient mobile printing via Google Print™, Mopria™ or AirPrint®. Once you're back in the office, simply pair your Android® device via the Near Field Communications (NFC) tag on the SP 3710 Series to authenticate and transfer information and print.



Control information and costs — the easy way

Enjoy the cost-saving value of convenience

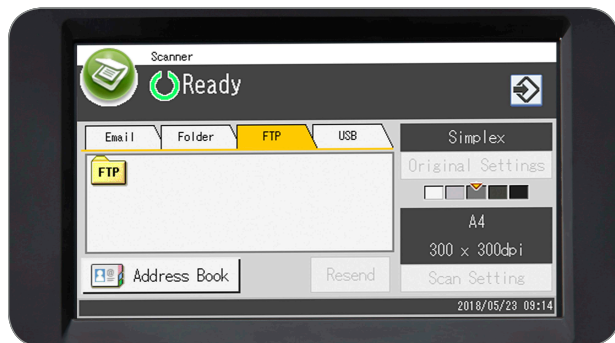
Spend too much time on maintenance, and eventually, you'll be forced to fix customer relationships, too. The SP 3710 Series offers an All-in-One (AIO) print cartridge with a long-lasting 7,000 print yield so you can keep ideas flowing freely with less downtime. When you do need to replace the cartridge, do it yourself in moments via the convenient full front-access design. Reduce paper costs with default duplex printing. Cut energy costs with Sleep Mode when the device is inactive. In addition, the devices are ENERGY STAR® certified, offer low Typical Electricity Consumption (TEC) value to minimize total cost of ownership even more and meet EPEAT® Silver criteria*.

*EPEAT Silver rating is applicable only in the USA.



Make a difference, digitally

Get the word out — the SP 3710SF MFP offers a host of features for sharing important information immediately. Want to send a full-color presentation to colleagues for review? Use the 35-sheet Automatic Reversing Document Feeder (ARDF) to scan up to 8.5" x 14" originals for immediate electronic delivery via multiple Scan-to capabilities, including Scan-to-Email, FTP, Folder, USB drive and more. Need a signature on a contract? Use paperless faxing to send digital documents outside your network and directly into the recipient's email inbox and reduce operating costs, trips to the fax and delays. Working with identification cards? Scan both sides onto one side of a single sheet automatically with ID Card Copy to save time and expense.



Manage more types of media securely

Target audiences with more impactful deliverables created just for them. Load a wide range of media, including thicker stocks up to 43 lb. Bond/90 lb. Index, into the 250-sheet Front-Loading Paper Tray or 50-Sheet Bypass Tray to print announcements, labels, envelopes and more that capture attention — and hopefully, new business. Print up to 1200 x 1200 dpi resolution for clear, clean images and text. Add an optional 250-sheet Paper Tray to extend print runs with paper sizes up to 8.5" x 14". Use the letter-sized platen glass to make impressive copies of documents, books and more. Use Locked Print to hold jobs in queue until the authorized user releases it to keep it out of the hands of passersby.



RICOH SP 3710SF/SP 3710DN

SYSTEM SPECIFICATIONS



Engine Specifications

SP 3710SF	Part # 408266
SP 3710DN	Part # 408272
Configuration	Desktop
Technology	Laser
Color/B&W	Black & White
Printing Process	Electro-photographic printing
Scanning Element	Laser Beam
Toner Type	Dry mono-component toner development
B&W Speed (Letter)	34-ppm
Maximum Monthly Volume	Up to 5,800 total prints/month
Maximum Monthly Duty Cycle	35,000 prints
First Page Out Time	7.1 seconds (Letter)
Warm-up Time	SP 3710SF: 23 seconds or less SP 3710DN: 23 seconds or less
Recovery from Sleep Mode	SP 3710SF: 8.8 seconds SP 3710DN: 8.8 seconds
Standard Paper Capacity	250-sheet tray + 50-sheet bypass
Maximum Paper Capacity	550 sheets (with optional 250-sheet Paper Feed Unit)
Standard Output Capacity	SP 3710SF: 50 sheets (Face down, Letter, Simplex) SP 3710DN: 125 sheets (Face down, Letter, Simplex)
Supported Paper Sizes	Standard Paper Tray: 5.5" x 8.5" to 8.5" x 14"; A6 – B5 Custom Sizes: 3.94" x 5.83" to 8.5" x 14" (100 x 148mm to 216 x 356mm) Bypass Tray: 5.5" x 8.5" to 8.5" x 14"; A6 – B5, Envelopes Custom Sizes: 3.54" x 5.51" to 8.5" x 14" (90 x 140mm to 216 x 356mm) Duplexing: 8.5" x 11" to 8.5" x 14"; A4 – B5 Standard Tray: 14 – 43lb Bond/ 90lb Index (52 – 162g/m) Bypass Tray: 14 – 43lb Bond/ 90lb Index (52 – 162g/m) Duplexing: 16 – 28lb Bond/ 58lb Index (60 – 105g/m)
Supported Paper Weights	Standard Paper Tray: 14 – 43lb Bond/ 90lb Index (52 – 162g/m) Bypass Tray: 14 – 43lb Bond/ 90lb Index (52 – 162g/m) Duplexing: 16 – 28lb Bond/ 58lb Index (60 – 105g/m)
Supported Paper Types	Thin, Plain, Thick, Recycled, Colored, Special, Letterhead, Pre-printed, Bond*, Cardstock*, Label*, Envelope**
Duplexing Dimensions (WxDxH)	Standard SP 3710DN : 14.6" x 15.4" x 10.3" (370 x 392 x 262mm) SP 3710SF : 15.9" x 15.4" x 16.5" (405 x 392x 420mm)
Weight	SP 3710DN: 28.7 lbs., 13kg SP 3710SF: 40 lbs., 18kg
Power Consumption (Operating)	SP 3710SF: 960W (Maximum) SP 3710DN: 960W (Maximum)
Power Consumption (Sleep Mode)	SP 3710DN: .66W SP 3710SF: .8W
Typical Electricity Consumption***	SP 3710DN: 1.32 KWh per week SP 3710SF: 1.304 KWh per week
Power Requirements	120-127V, 60Hz, 7.7A
ENERGY STAR	Certified
EPEAT	Silver

*Tray 1 and Bypass only

**From Bypass Tray Only

***Typical Electricity Consumption by ENERGY STAR program

Copy Specifications – SP 3710SF only

Copy Resolution	Scanning: 600 x 600 dpi via platen 600 x 300 dpi via ARDF Printing: up to 1200 x 1200 dpi
Document Feeder Type	Automatic Reversing Document Feeder (ARDF)
Original Capacity	35 sheets maximum (dependent upon paper thickness)
Original Size	5.5" x 5.5" to 8.5" x 14" (140 x 140mm to 216 x 356mm)
Original Weight	14 – 28lb Bond (52 – 105g/m ²)
Maximum Copy Quantity	99 copies
Preset Reduction & Enlargement Ratios	400%, 200%, 155%, 129%, 100%, 93%, 78%, 65%, 50%
Zoom Range	25 – 400% in 1% increments via ARDF or platen
ID Card Copy	Supported
Copier Features	Duplex copy, Combine Copy (2 in 1, 4 in 1), Image Density Adjustment (5 levels), Image Quality Mode (Text, Photo, Mixed)

Printer Specifications

Processor Speeds	SP 3710SF: 400MHz SP 3710DN: 350MHz SP 3710SF: 256MB SP 3710DN: 128MB
Memory (Standard/Maximum)	1200 x 1200 dpi, 1200 x 600 dpi, 600 x 600 dpi
Print Resolution	PCL6, PCL5e, PS3 emulation (Windows support only) PCL: 55 fonts, PS3: 35 fonts Standard: Ethernet 100BASE-TX/10BASE-T, USB2.0 Type B Optional: Wireless LAN (IEEE 802.11 a/b/g/n/ac)
Printer Languages	TCP/IP (IPv4, IPv6), IPP Windows 7, 8.1, 10, Windows Server 2008 (SP2 or later), 2008R2, 2012/2012R2, 2016 Mac OS: 10.10 or later Linux: Ubuntu 16.04LTS, Ubuntu 16.10, openSUSE 13.1, openSUSE 13.2, Red Hat Enterprise Linux 6, 7
Fonts	Web Image Monitor, Device Manager NX, @Remote (limited support) RICOH SmartDeviceConnector, AirPrint*, Mopria*, Google Cloud Print™
Connection Types	Collate, Dithering, Duplex, Do Not Print Blank Pages, Front Cover Sheet, Layout (N-Up), Locked Print (PCL Only), Mirror Image (PS3 only), Reduce/Enlarge, Rotate Print (PCL Only), Sample Print (PCL Only), Toner Saving, Watermarks
Network Protocols	
Supported Operating Systems	
Device Management Utilities	
Mobile Printing	
Other Printer Features	

Scan Specifications – SP 3710SF only

Scanner Resolution	Via Platen: up to 600 x 600 dpi Via ARDF: up to 300 x 600 dpi TWAIN: up to 19,200 dpi via Platen, up to 600dpi via ARDF WIA: up to 600 x 600 dpi Black & White: 13 ipm (via ARDF, 600 x 300 dpi) Color: 4 ipm (via ARDF, 600 x 300 dpi) Up to 8.5" x 11.7" (216 x 297 mm)
Scan Speeds	Up to 8.5" x 14" (216 x 356 mm)
Platen Size	
Maximum Scanning Size	

Scan Modes	Color, Black & White, Grayscale
File Formats	TIFF, JPEG, PDF
Scan-to-Modes	Scan-to-Email, Scan-to-Folder, Scan-to-FTP, Scan-to-USB

Fax Specifications – SP 3710SF only

Compatibility	ITU-T (CCITT) G3
Circuits	PBX, PSTN
Fax Resolution	200 x 100dpi (Standard), 200 x 200dpi (Fine/Photo)
Modem Speed	33.6 Kbps with Auto Fallback to 2,400 bps
Compression Method	MH, MR, MMR
SAF Memory Size	2 MB (approx. 100 pages)
Transmission Speed	3 seconds/page*
Quick Dials	8
Speed Dials	100
Additional Fax Features	Auto Redial, Auto Reduction, Duplex Print, Error Correction Mode, Fax Forwarding to E-Mail/ Folder, Immediate/ Memory Transmission, LAN-Fax

*Approx.3 seconds (200x100 dpi, MMR, ITU-T #1 chart)

Security Features

IPSec, Locked Print, SNMPv2 support, WEP

Hardware Options

Paper Feed Unit PB1130	Part #: 408287
Paper Capacity	250 sheets
Supported Paper Sizes	5.5" x 8.5" to 8.5" x 14"; A5 – B5
Supported Paper Weights	16 – 28lb Bond/ 58lb Index (60 – 105g/m ²)
Dimensions (WxDxH)	14.6" x 15.4" x 3.5" / 370 x 392 x 89 mm
Weight	6.6 lb., 3 kg

IEEE 802.11 Interface Unit Type P16	Part #: 408299
-------------------------------------	----------------

Consumables and Yields

AIO Print Cartridge SP 3710X	Yield: 7,000 pages* Part #: 408284
------------------------------	------------------------------------

*Declared yield value in accordance with ISO/IEC 19752.

Product ships with starter All-in-One (AIO) print cartridge yielding approximately 7,000 pages.

For maximum performance and yield, we recommend using genuine Ricoh parts and supplies.

All specifications are subject to change without notice.

Warranty

The RICOH SP 3710SF/SP 3710DN is under warranty against defects for a period of one year from the date of purchase. Consumables are under warranty for a period of 90 days from the date of purchase or until depleted, whichever comes first. Please refer to warranty documents shipped with the product for more details.

RICOH
imagine. change.

www.ricoh-usa.com

Ricoh USA, Inc., 70 Valley Stream Parkway, Malvern, PA 19355, 1-800-63-RICOH
RicoH and the Ricoh logo are registered trademarks of Ricoh Company, Ltd. All other trademarks are the property of their respective owners ©2018, Ricoh USA, Inc. All rights reserved.
The content of this document, and the appearance, features and specifications of Ricoh products and services are subject to change from time to time without notice. Products are shown with optional features. While care has been taken to ensure the accuracy of this information, Ricoh makes no representation or warranties about the accuracy, completeness or adequacy of the information contained herein, and shall not be liable for any errors or omissions in these materials. Actual results will vary depending upon use of the products and services, and the conditions and factors affecting performance. The only warranties for Ricoh products and services are as set forth in the express warranty statements accompanying them.

R3954