

Continuous Feed Inkjet Printer

# RICOH Pro VC60000

Printer  Copier  Facsimile  Scanner



**RICOH**  
imagine. change.

Pro VC60000

**394** full-color  
fpm

## Produce high-volume, high-quality prints for less

Not every print job is the same. Fortunately, neither is every printer. With the RICOH® Pro VC60000 continuous feed inkjet printer, you can add personalization, customization and last-minute changes quickly and conveniently with near-offset quality. Whether you're printing books, brochures, direct mail or other marketing collateral, you can customize every page in a print job. Use this printer to replace static images with variable data printing (VDP) jobs that your offset press can't provide — and capture more revenue-generating opportunities.

The new digital inkjet RICOH Pro VC60000 printing system is the result of Ricoh's decades of experience in the development and manufacturing of core inkjet technologies. Key features and benefits of the RICOH Pro VC60000 are as follows:

- New Ricoh high resolution drop-on-demand inkjet printheads
- New Ricoh high-density pigment inks
- New Ricoh dynamic printhead positioning technology for precise color registration
- Support for traditional offset coated paper, with an optional undercoat unit
- An optional protector coat unit that provides scratch and scuff resistance
- A new Ricoh digital front end with an easy-to-use graphical user interface
- Enhanced workflow software plug-ins

Backed by Ricoh's extensive network of highly experienced digital inkjet support personnel, the Pro VC60000 enables customers to produce a whole new range of applications reliably and efficiently.



## Near-offset quality ... quickly and economically

New Ricoh color technology to help build your business

### Print quickly, continuously

Production runs vary widely in size and scope. Produce direct mail, manuals, booklets and more at up to 394 feet-per-minute (120 meters) at 600 x 600 dpi using a wide range of paper stocks. Or for more demanding applications, print at 1200 x 1200 dpi at speeds up to 164 feet per minute (50 meters per minute)



### Reduce costs, add more profit

It's difficult to justify the costs of using an offset press when it comes to emergency orders, quick turnarounds or custom projects. And your cut-sheet printer may not be able to handle the volume required within a given time frame. So what do you do? Add the RICOH Pro VC60000 to your production environment so you can sell value-added print services like VDP and be competitive on short-run, on-demand jobs.



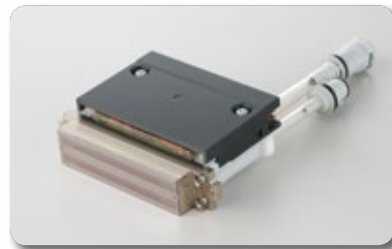
### Impress customers with quality printing

Your customers will see the brilliant colors, sharp lines and clear text immediately. Then, they'll notice how quickly you printed them. For more than 25 years, Ricoh has developed and refined ink jet printing technologies to produce high image quality with repeatable results. Choose the RICOH Pro VC60000 for high-resolution, 1200 x 1200 dpi printing with near-offset quality for books, direct mail, marketing collateral and more.



### Ricoh innovation at work

Ricoh's high resolution, drop-on demand stainless steel printheads can adjust ink drop size dynamically to render sharper image detail and smoother gradations. Only the precise amount of ink needed is used to maximize resources and provide exceptional prints on every page.



# Exceptional results for a wide range of work

- 1 UC8000 Undercoater (optional):** Using an anilox roller, one or both sides of the web can be coated to enable printing on offset coated paper. The system provides improved adhesion of ink and also controls dot gain and beading to produce high quality printing that goes beyond what most inkjet systems produce today.
- 2 Base Unit (two per system):** A modular designed system for easy installation and configuration flexibility. The system is comprised of the entrance unit and main unit which house the CMYK print heads and paper path, standard dryer unit and exit unit.
- 3 Protector Coat Unit (optional):** Protect prints from smearing and smudging with a protective coat that covers the entire page, which is required for offset coated paper. The integrated print station improves "scratch resistance", making the printed output ideal for direct mail applications.
- 4 Dryer Unit:** Removes moisture from the printed page, preparing it for printing on the second side or inline finishing. The optional air dryer unit is mandatory for offset coated papers.
- 5 Exit Unit:** Fine-tune media handling and tensioning controls to help ensure every page is produced with uncompromising consistency. For quality assurance, a Contact Image Sensor (CIS) is used to check for clogging, alignment and uniformity of print heads.
- 6 Ricoh's TotalFlow Print Server R600A:** With intuitive operation, operators can control job management, system configuration, and maintenance tasks.
- 7 Turn Bar Unit for I or L configurations:** Fit your unique space and configuration requirements with a flexible system that can be installed in a straight line or left angle.
- 8 Support for a variety of finishing devices:** Choose from multiple Ricoh partners to provide a variety of finishing solutions, such as, unwind, rewind, cut, fold, dynamic perforation, vision systems and inline processing, plus a solution for books. And even though the finishing devices are from a Ricoh partner, Ricoh provides the service and support on those items.





The Ricoh TotalFlow Print Server R600A is scalable to support a range of complex jobs.



RICOH Pro VC60000



# Expand your print business

## Production when you need it

You have thousands of pages to print, with more jobs waiting in the queue. Your production printer must be ready to print when you are. With the long-lasting Piezo printheads, there are less replacement interruptions. With 20 liters of every color of ink, you can reduce how often you have to replace ink. When you do need to replace a color, on-the-fly ink replacement keeps the system up and running.



## Handle more types of jobs

You have your core business. But you can have so much more. Use the RICOH Pro VC60000 to print on multiple types of paper, including offset coated paper with the optional UC8000 Undercoater. This unit prepares the paper for high-quality inkjet printing and effectively increases the media substrate range for the RICOH Pro VC60000.



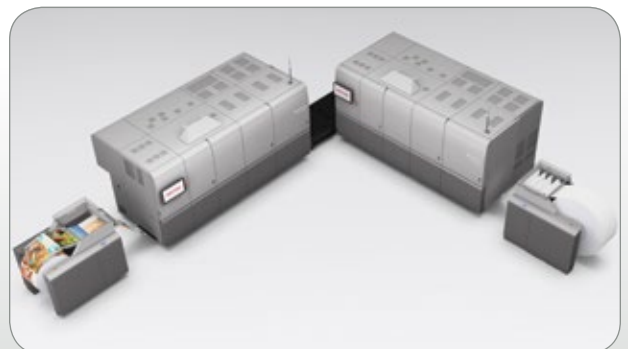
## Make every job unique — and profitable

With the RICOH Pro VC60000, you can add dynamic personalized printing to every page and meet tight deadlines while adding value. Whether it's adding critical billing messages to specific transactional documents, personalizing a direct mail piece or even custom-printing a booklet, you can deliver customized output to clients at incredibly fast speeds to help ensure the right information is seen by the right people when they need it most.



## Scalable and configurable

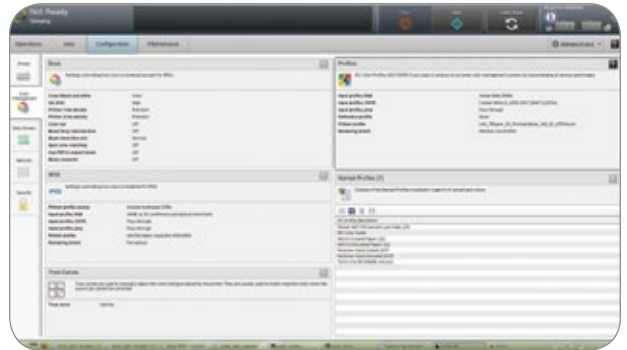
Configure the RICOH Pro VC60000 to fit your printing and finishing applications. You can add faster drying or protective coating units to protect output from scratching or running and enhance production quality even more. Choose to install the device in an in-line or L-shaped format to accommodate other production shop equipment.



# Customize printing to meet customer demands

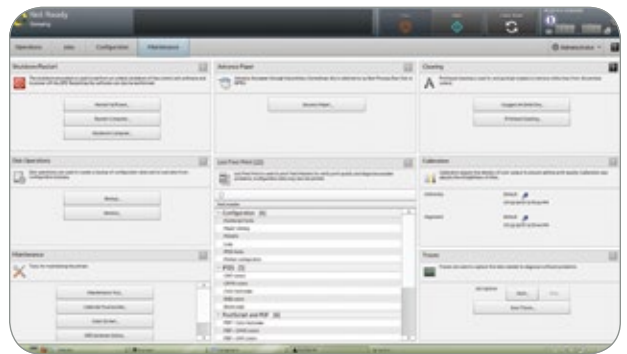
## Automate repetitive tasks

Use the Ricoh TotalFlow® Print Server R600A to schedule and monitor jobs, check system status and transition to the next print stage seamlessly with fewer human touchpoints. Complete a wider range of projects, including on-demand orders, with higher quality and fewer mistakes and reduce costs for your organization. You can even use the intuitive interface remotely to automate many print processes that require repetitive tasks that can slow production.



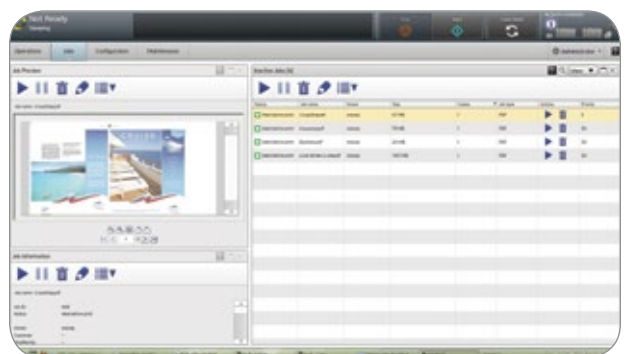
## Perform production print tasks faster, more accurately

With the Ricoh TotalFlow® Print Server R600A, you can work on even the most complex jobs, including variable addressing and variable images, without missing a beat. Customize the user interface with the features and options you need most. They're shown as "Pods" and can be positioned anywhere on the display swiftly with drag-and-drop. You can check status and errors with a single glance and make changes or schedule maintenance in only moments. It accepts a wide range of data streams — including PS, PDF, PDF/VT, and AFP/IPDS — so you can complete almost any job with incredible speed and convenience.



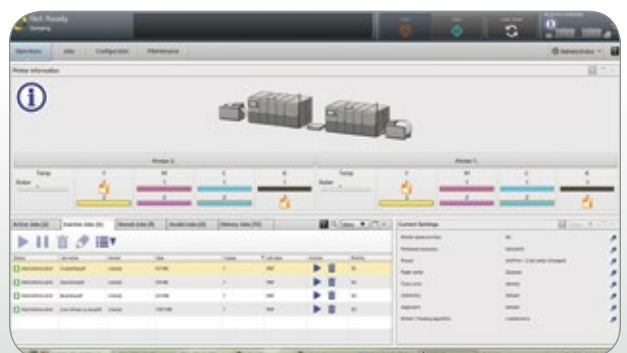
## Customize how you want to print

Customize the Ricoh TotalFlow Print Server R600A interface to suit your print preferences and to access critical print information when you need it most. Align print jobs by status, owner, submission time or other features. Add "Pods" to check supply status or to make fast configurations. You can toggle between them with one-touch control. And, you can change them at any time. You can even add shortcuts to frequently used information and tasks so you can meet deadlines consistently.



## Print with convenience, from anywhere

You may be tied to every print job, but that doesn't mean you have to be tied to the printer when managing the operations of a commercial print shop. With the Ricoh TotalFlow Print Server R600A, you can manage your print operations from almost any location using the intuitive HTML job management console. Whether you're on the shop floor, at your desk or across the street in a meeting, you can access critical job information from a web browser. Check status, manage configurations and plan maintenance remotely and transition to the next job with fewer delays.



# RICOH Pro VC60000

## SYSTEM SPECIFICATIONS

### Imaging Technology

Piezo Drop on Demand  
Dynamic Variable Drop Size – @ 2 bits/drop  
Stochastic Screening  
Ricoh Print Heads – 10 print heads per color

### Engine Technology

**Color Inkjet** 4 colors CMYK, Protector Coat (Optional), Undercoat (Optional)  
**Paper Path** Tight Web  
**Web Width** 20.5" (520.7 mm)  
Printable Area – 20" (508 mm)  
(non-printed area 2 mm from paper edges)\*  
**Paper Length** 4" to 26" (101.6 to 1371.6 mm)  
**Machine Layout – Duplex** "L" or Inline Configuration

### Engine Components

**Base Unit\***  
Dimensions (WxDxH) 167.40" (4070 mm) x 79.72" (2025 mm) x 78.74" (2000 mm)  
Weight 8531.9 lb (3870 kg)  
**Protector Coat Unit (Optional)**  
Dimensions (WxDxH) 35.27" (850 mm) x 79.72" (2025 mm) x 78.74" (2000 mm)  
Weight 1168.4 lb (530 kg)  
**Undercoat Unit (Optional)**  
Dimensions (WxDxH) 56.30" (1430 mm) x 73.94" (1878 mm) x 71.69" (1821 mm)  
Weight 1646.9 lb (747 kg)

\*Based on one unit (two units per configuration)

### Operating Environment

**Temperature (recommended)** 64.4 – 75.2° F (18 – 24° C)  
**Humidity (recommended)** 40 – 60%

### Productivity

**Resolution/Print speed** 600 x 600 dpi : 394 feet/min, or, 120 meters/min  
1200 x 600 dpi: 246 feet/min, or, 75 meters/min  
1200 x 1200 dpi: 164 feet/min, or, 50 meters/min

### Media Support

**Media Types** Plain, General Offset Coated\* and Uncoated, IJ coated, IJ treated, Ground-Wood, Recycled  
**Paper Weight** 40 gsm to 250 gsm

\*Optional Undercoat Unit and Protector Coat unit required for general offset coated.

### Supplies

Pro Ink Cartridge Black VC60000  
Pro Ink Cartridge Cyan VC60000  
Pro Ink Cartridge Magenta VC60000  
Pro Ink Cartridge Yellow VC60000  
Pro Undercoat Cartridge VC60000  
Pro Protector Coat Cartridge VC60000

### Finishing

**Specification** 3rd party finishing devices I/F specification: Type 1A/+  
**Finishing Solutions** Multiple partners provide a variety of unwind, rewind, cut, fold, dynamic perforation, vision systems and inline processing, including a solution for books

### TotalFlow R600A Digital Front End

#### Architecture

**Processor Architecture** Intel Xeon x64  
**OS** Linux

#### Physical Characteristics

**Dimensions (WxDxH)** 39.5" (1003 mm) x 24" (609 mm) x 49" (1245 mm)  
**Weight** 716.5 lb (325 kg)

#### Data Stream Support

PostScript  
PDF (APPE)  
PDF/A/T  
IPDS

#### Job Submission

FTP  
IPP  
LPR  
Raw Port  
Operator Console  
Virtual Printer/Hot Folder Support

### Graphical User Interface

Display on each print engine  
Login by Role: Admin, Operator, Maintenance or Customizable  
Highly customizable user interface layout by role  
Graphical Printer & Supplies Status  
Operator Messages  
Paper Catalog/Paper Setup

### Job Management

Graphical Job Ticketing/Job Preview – Native JDF  
Banner  
Operator Comments  
Sides Printed  
Copies  
Rotate, Reduce/Enlarge, Image Alignment  
Special Marks  
Job Imposition  
Job Queue Management  
Submit  
Suspend  
Hold  
Process Next  
Delete Job  
View Jobs  
Job Status  
Active  
Inactive  
Stored  
All Jobs  
Job History

### Color Management

ICC Profile Support  
Enhanced Color Management by Side and Object Type  
Device Link Support  
Spot color dictionaries (Pantone, Toyo, DIC, and HKS)  
CMR Support (AFP/IPDS)

### Software Support

Ricoh ProcessDirector for AIX, Linux or Windows  
Version 3.1 or later releases  
TotalFlow BatchBuilder for Windows  
Version 1.1  
InfoPrint manager for AIX, Linux, Windows  
Version 3.1 or later releases  
Print Services Facility for AIX, Linux or Windows  
Version 3.1 or later releases

Note: For Linux SLES, or, Red Hat

**RICOH**  
imagine. change.

[www.ricoh-usa.com](http://www.ricoh-usa.com)

Ricoh Americas Corporation, 70 Valley Stream Parkway, Malvern, PA 19355, 1-800-63-RICOH  
Ricoh® and the Ricoh Logo are registered trademarks of Ricoh Company, Ltd. All other trademarks are the property of their respective owners. ©2015 Ricoh Americas Corporation. All rights reserved. The content of this document, and the appearance, features and specifications of Ricoh products and services are subject to change from time to time without notice. Products are shown with optional features. While care has been taken to ensure the accuracy of this information, Ricoh makes no representation or warranties about the accuracy, completeness or adequacy of the information contained herein, and shall not be liable for any errors or omissions in these materials. Actual results will vary depending upon use of the products and services, and the conditions and factors affecting performance. The only warranties for Ricoh products and services are as set forth in the express warranty statements accompanying them.

