

B&W Production Printer

# RICOH Pro 8100EXe/8100se/ 8110se/8120se

Printer  Copier  Facsimile  Scanner

**RICOH**  
imagine. change.



Pro 8100EXe

95 ppm monochrome

Pro 8100se

95 ppm monochrome

Pro 8110se

110 ppm monochrome

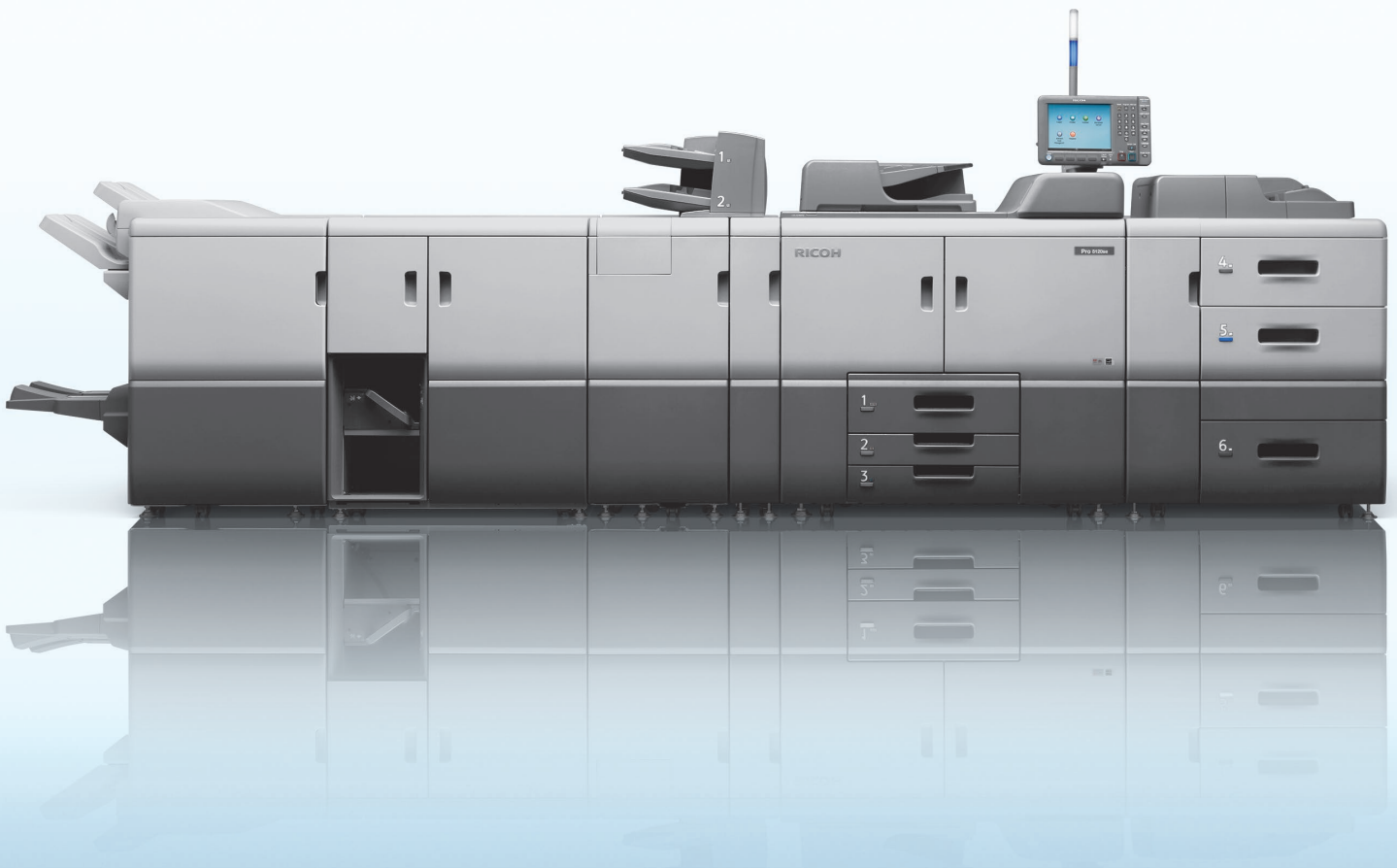
Pro 8120se

135 ppm monochrome

# High-impact, low-cost production workflow

The RICOH® Pro 8100se Series black-and-white production MFP offers a combination of power and versatility to deliver high-quality output that impresses system operators as much as customers. Take advantage of easy-to-use controls and advanced print technology to perform a wide range of commercial and corporate production tasks with incredible precision in less time. Designed to print quickly on diverse media, it adds capacity to your workflow and can contribute to your bottom line. Select it as the primary device in production-class print environments, or integrate it with an extensive Ricoh Managed Document Services (MDS) strategy.

- Produce up to 135 black-and-white pages per minute
- Create compelling images with up to 1200 x 4800 dpi resolution
- Handle a wide range of media up to 13" x 19.2"
- Distribute documents freely with advanced scanning capabilities
- Access to 12,650 sheets for outstanding paper capacity
- Complete more jobs in-line for greater productivity



## Turn more jobs into more profitable opportunities

Innovative technology improves productivity, quality and efficiency

### Create with clarity

Take advantage of 1200 x 4800 dpi resolution to produce reports, booklets, newsletters and more with crisp text and images. The RICOH Pro 8100se Series uses a new, granular toner with smaller, more uniform particles to create sharper shapes and smoother halftones. Its innovative Vertical Cavity Surface Emitting Laser (VCSEL) technology produces 1200 x 4800 image resolution for precise front-to-back registration. Plus, it maintains exceptional alignment on each page for manuals, postcards and other two-sided documents.



### Extend print runs

Keep pace with the most aggressive production demands. The RICOH Pro 8100se Series MFP is engineered to pack a wide range of features into compressed production room spaces. It prints up to 135 pages-per-minute for incredible throughput, with duty cycle runs up to three million prints per month. Intelligent controls maintain optimal temperatures, which extend duty cycles and part life. Paper guides are designed to reduce static electricity and optimize paper-sensing sequencing for maximum uptime.



### Handle more types of media

Ample paper capacity of 12,650 sheets is bolstered by diverse media handling that enables users to print on paper up to 13" x 19.2" (SRA3+). Print postcards with thicker stocks up to 350 g/m<sup>2</sup> for standard output and up to 256 g/m<sup>2</sup> for duplex. The RICOH Pro 8100se Series accommodates textured, heavy-coated and other special stocks automatically — including envelopes. A robust Paper Library features preset and fully customizable paper settings. The library also includes more than 60 frequently used printing attributes to ensure reliability and productivity.

Tray	Paper Type	Weight	Size	Resolution
Tray 1	Plain Paper	100gsm	A4	1200x4800
Tray 2	Musky Offset Digital	110gsm	12x18	1200x4800
Tray 3	Musky Golden Copy	98-210gsm	12x18	1200x4800
Tray 4	Hanemill 11 Copy Plus	75gsm	12x18	1200x4800
Tray 5	Futura Laser Gloss	210gsm	12x18	1200x4800
Tray 6	Sterling Ultra Digital Gloss	110gsm	12x18	1200x4800
Tray 7	Plain Paper	100gsm	8x11	1200x4800
Interior Lower Tray	Auto Detect			
Interior Lower Tray	Auto Detect			

### Operate with ease

The RICOH Pro 8100se Series includes several unique features designed specifically to simplify production tasks. The large control panel offers thumbnail views, previews and versatile editing controls. It's raised to give users immediate access while keeping them in a comfortable working position. An Operator Call light extends from the top of the MFP so users can be alerted quickly — even from across the room — that the device requires attention for low supply levels or other service needs. An Active Tray indicator light on each paper tray signals which one is in use, so refills can be completed without interrupting print runs.



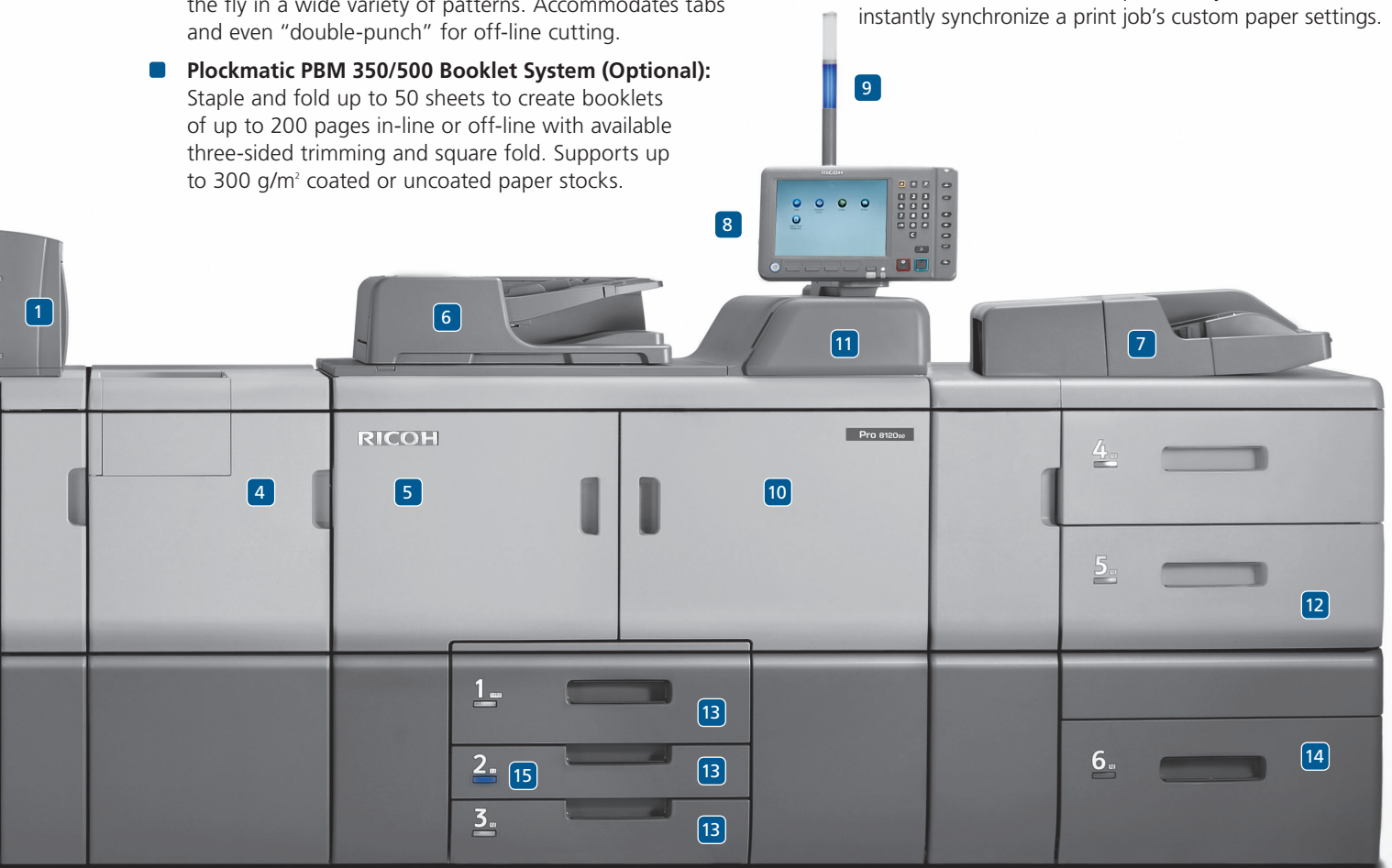
# Fully featured to give you full control of production printing

- 1 CI5030 Cover Interposer Tray (Optional):** Feed pre-printed sheets from two sources for front and back covers.
- 2 SR5050 3,000-Sheet Staple Finisher (Optional):** Achieve 100-sheet stapling with the ability to output documents up to 13" x 19.2". Add the optional Hole Punch Unit for even more flexibility.
- 3 SR5060 2,500-Sheet Booklet Finisher (Optional):** Produce stapled and saddle-stitched booklets cost-effectively with the in-line Booklet Finisher. Also available with an optional Booklet Trimmer Unit and Hole Punch Unit.
- 4 FD5020 Multi-Folding Unit (Optional):** Execute Z-folds, half folds, gatefolds and more to create a variety of finished documents.
- 5 DU5030 Decurl Unit (Optional):** Promote more accurate stacking and higher throughput by reducing the risk of paper curling.
- 6 220-Sheet Automatic Document Feeder:** Copy and scan jobs more efficiently with single-pass color duplex scanning — up to 220 ipm (in duplex mode). A built-in sensor also prevents missing pages caused by original double feeding.
- 7 BY5010 Multi Bypass Tray (Optional):** Feeds up to 550 sheets of special paper stocks and sizes for expanded system capacity and document output types.
- 8 Full-Color, 10.4" SVGA Control Panel:** Easily navigate from job to job with fingertip control via the post-mounted, intuitive touch screen.
- 9 Operator Call Light:** Visually alert operators to changes in system status for prompt attention.
- 10 VCSEL and Granular Toner Technology:** Vertical Cavity Surface Emitting Laser and high-quality toner provide more vivid prints and smooth gradations for improved text, fine lines, graphics and photographic reproductions.
- 11 500GB Hard Disk Drive:** Secure documents with DataOverwriteSecurity System (DOSS), data encryption, Locked Print and more.
- 12 Oversize and Heavy Media Support:** Accepts 13" x 19.2" paper sizes and heavy media (up to 110 lb. Cover through the RT5080 LCT) to give you many more options for in-house production.
- 13 Paper Trays:** Standard paper sources include the tandem 2 x 1,100-Sheet Paper Tray and two 550-Sheet Paper Trays for a total paper capacity of 3,300 sheets. With additional paper sources, this system can hold up to 12,650 sheets.
- 14 RT5080 and RT5070 Large Capacity Trays (Optional):** For maximum versatility, select the RT5080 4,400-Sheet LCT to reliably feed up to 110 lb. Cover stock (300 g/m<sup>2</sup>) and up to 13" x 19.2" sheets. Or, choose the RT5070 5,000-Sheet LCT to handle paper sizes up to 8.5" x 11" and up to 80 lb. Cover stock (216 g/m<sup>2</sup>).
- 15 Active Tray Indicators:** Indicator light shows which tray is in use, allowing operators to refill other paper sources while the system is running.
- 16 RB5020 Ring Binder (Optional):** Automatically collate, hole punch, insert and close rings in-line for up to 100-sheet documents with no manual intervention.



RICOH Pro 8100se Series

- **17 SK5030 High-Capacity Stacker (Optional):** Enables longer unattended jobs with a 5,000-sheet stacking capacity. The stacker also includes one roll-away cart to quickly move large volumes of output to off-line binding or packing and shipping. For added security, the stacker door can be locked when printing confidential documents.
- **TK5010 A3/DLT Tray Kit (Optional):** For print shops that need large paper size capacity but have limited installation space, convert a standard paper drawer to an 11" x 17" drawer with the A3/DLT Tray Kit.
- **RT5100 Vacuum Feed Large Capacity Tray (Optional):** Support more types of media with a three-belt air-delivery system that offers high-level feeding accuracy for coated papers from 40 – 350 g/m<sup>2</sup>. Use the optional BU5010 Bridge Unit and add two 4,400-sheet Vacuum Feed LCTs to increase total printer capacity to 12,650 sheets.
- **GB5010 Perfect Binder (Optional):** Glue-bind up to 200 sheets/booklet, including covers up to 300 g/m<sup>2</sup>, along with three edges trimming for truly professional looking documents.
- **GBC StreamPunch™ Ultra (Optional):** Create professional-quality documents with in-line punching on the fly in a wide variety of patterns. Accommodates tabs and even "double-punch" for off-line cutting.
- **Plockmatic PBM 350/500 Booklet System (Optional):** Staple and fold up to 50 sheets to create booklets of up to 200 pages in-line or off-line with available three-sided trimming and square fold. Supports up to 300 g/m<sup>2</sup> coated or uncoated paper stocks.
- **RPIP Interface Box Type S3:** Connect the RICOH Pro 8100se Series MFP in-line to a wide range of third-party finishing devices for highly automated workflows.
- **Broad Compatibility:** Quickly integrate these systems with built-in compatibility for PC and Mac environments in LAN or wireless networks.
- **Versatile Controller Support:** The standard embedded print controller helps meet your unique printing and workflow requirements most efficiently. The embedded controller supports PCL5e/6 as standard PDL. Optional genuine Adobe PostScript 3 and genuine IPDS are available to integrate seamlessly into almost any host environment with incredible reliability and page-recovery capabilities.
- **Fiery® EB-32 Controller (Optional):** A new Fiery® EB-32 Controller offers end-to-end automated workflows for advanced print management to simplify and expedite production printing. This digital front end (DFE), based on EFI's popular Fiery Server technology, supports a wide range of capabilities including Advanced Job Re-order, Tab Inserts and more. The controller's Paper Catalog feature also automatically integrates with the RICOH Pro 8100se Series Paper Library function to instantly synchronize a print job's custom paper settings.





# Fast-paced production for demanding workloads

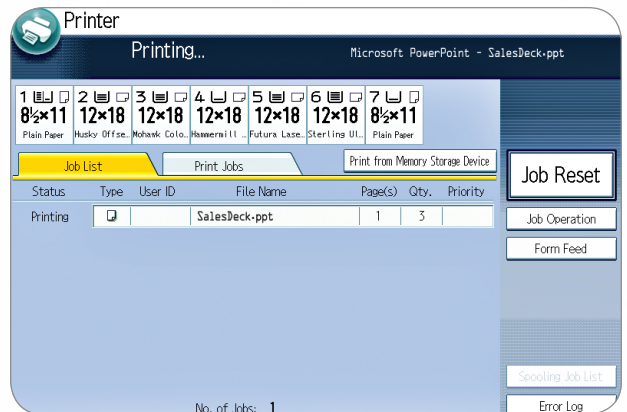
## Unrelenting productivity and efficiency

Turn productivity into potential profits. The RICOH Pro 8100se Series MFP simplifies and expedites maintenance tasks to keep workflow moving. Trained users can replace key components and consumables — including drums, rollers, fusing units and more — in only a few minutes without technical assistance. In fact, with the twin toner bottle mechanism, depleted toner bottles can be replaced without any print interruptions.



## Reliable output under control

The RICOH Pro 8100se Series MFP delivers consistent image quality with unwavering reliability. It features an indirect image transfer mechanism to minimize scratch marks, toner scattering and shock jitter to economically produce near-offset-quality output. The oil-less fusing unit transfers images seamlessly from thin to thick paper stocks without streaking. This high performance MFP also features a single-pass document feeder that enables users to scan both sides of a letter-size document at 220 images per minute.



## Automated, end-to-end finishing

Bring more jobs in-house. The RICOH Pro 8100se Series offers extensive in-line finishing options to manage professional-grade documents, from input to output, with less manual labor. A redesigned finishing interface dramatically reduces the time between job runs. It delivers fully automated stapling, hole punching, saddle stitching, cover insertion, de-curling and more for faster turnarounds. An impressive ring binder accepts oversized paper and thicker stocks. The booklet finisher features a limitless output mode for virtually non-stop output. In addition, the system offers multiple-page folding for direct mail and other output.



# Manage jobs with ease, protect them with advanced controls

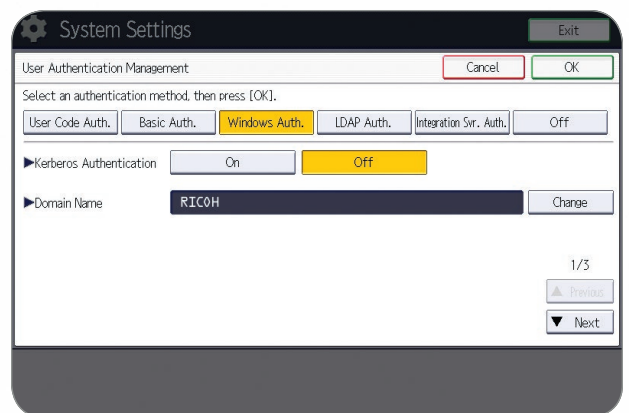
## Versatility that can be seen — and shared

Reduce operating costs by managing a wider range of document tasks using a single versatile device. This powerful MFP includes scan-to-email, folder, URL, PDF and more, so documents can be distributed instantaneously for faster, more affordable communications. Search PDF files via keywords with the embedded OCR option. In addition, the MFP allows users to print files from or scan to USB or SD cards for convenient media printing while on the move.



## Protect documents as well as your fleet

The RICOH Pro 8100se Series includes a host of features to simplify fleet management and security tasks. Administrators can take advantage of @Remote to collect meter data, receive toner and service alerts automatically and generate critical reports. User authentication controls ensure that only authorized owners can access print jobs with sensitive information. Secure Socket Layer (SSL) technology protects data from interception, analysis and tampering. DataOverwriteSecurity System (DOSS) automatically overwrites any files on the hard drive to render them unreadable. HDD encryption adds another layer of protection against hackers.



## Reduce energy consumption

In addition to the system's ENERGY STAR®\*\* rating, standard one-pass duplex scanning saves steps and resources to maximize efficiency. And for organizations looking to evaluate products that deliver environmentally friendly solutions, the RICOH Pro 8100se Series qualifies at the Gold\*\* level for EPEAT® (Electronic Product Environmental Assessment Tool) for imaging equipment. EPEAT is a comprehensive environmental procurement program based on IEEE 1680 International Standards. It includes a rating of various environmental criteria on products and environmental programs to help identify greener imaging equipment and other electronics devices. The program includes energy efficiency, take-back programs for equipment, packaging and consumables, reduction/elimination of environmentally sensitive substances, and other important environmental attributes. For more information, see <http://www.rfg-usa.com>.



\*The RICOH Pro 8100EXe model is not qualified by ENERGY STAR or EPEAT.  
\*\*EPEAT rating is applicable only in the USA.

