

## GENERAL

<p>Max print engine speed: Full colour: Up to 29 prints per minute<sup>1</sup> (A4 LEF) B&amp;W: Up to 29 prints per minute<sup>1</sup> (A4 LEF)</p> <p>Print speed at standard speed mode setting and based on JEITA J1 and J6 chart (A4): Full colour: 10.5ppm<sup>2</sup> B&amp;W: 9.0ppm<sup>2</sup></p> <p>Warm-up time: Less than 35 seconds</p> <p>First print speed: Full colour: Less than 7 seconds<sup>2</sup> B&amp;W: Less than 5.5 seconds<sup>2</sup></p> <p>Dimensions (W x D x H): 399 x 436.5 x 212.5 mm</p> <p>Weight: 10.5 kg</p> <p>Power source: 220 - 240 V, 50 - 60 Hz</p> <p>Power consumption: Print mode: Less than 26.8 W3 Energy saver mode: 4.5 W or less</p> <p>Duty cycle: Up to 10,000 prints per month</p>	<p>Paper weight: Short edge (88 - 216 mm) Bypass tray: Custom: Long edge (127 - 1295.4 mm) Short edge (55 - 216 mm) Std paper tray: 60 - 163 gsm Multi-bypass tray: 60 - 256 gsm Optional Paper Feed Unit 60 - 105 gsm</p> <p>Media: Standard tray: Plain paper, inkjet paper, glossy paper*, postcards, inkjet postcards, envelopes* (simplex only for envelopes) Multi-bypass tray: Plain paper, inkjet paper, glossy paper*, postcards, inkjet postcards, thick paper*, envelopes (simplex only for envelopes)*</p> <p>Paper feed unit: Plain paper, Inkjet Paper*, glossy paper*</p> <p>Duplexing: Standard</p>
--	---

## CONSUMABLES

<p>Cartridges:</p> <p>Ink collector unit:</p>	<p>Black: 2,500 sheets<sup>4</sup> Cyan: 2,200 sheets<sup>4</sup> Magenta: 2,200 sheets<sup>4</sup> Yellow: 2,200 sheets<sup>4</sup></p> <p>27,000 sheets<sup>4</sup></p>
---	---

## CONTROLLER

<p>Printer resolution:</p> <p>Memory:</p> <p>Driver:</p>	<p>Up to 3,600 x 1,200 dpi (equivalent)</p> <p>128 MB</p> <p>PCL5e/6 RPCS™ raster</p>
--	---

## CONNECTIVITY

<p>Network protocol:</p> <p>Supported environments:</p> <p>Interface:</p>	<p>TCP/IP</p> <p>Windows XP/Vista/7/Server 2003/Server 2008</p> <p>Macintosh OS X (Power PC) 10.5 Macintosh OS X (Intel) 10.4.5 - 10.5</p> <p>USB 2.0</p> <p>Ethernet 10 base-T/100 base-TX IEEE 802.11 b/g/n</p>
---	---

## OPTIONS

- 100-sheet multi-bypass tray
- 250-sheet paper feed unit

Print speed may vary depending on the type of output

<sup>1</sup> Print speed based on high speed mode setting on plain paper, depending on coverage and type of document printed

<sup>2</sup> Speed based on standard speed mode setting on A4 plain paper  
Sample documents below show typical prints at these speeds

<sup>3</sup> Average power consumption in printing using JEITA J6 chart

<sup>4</sup> Yield measuring method: ISO/IEC 24711.

\* Simplex mode only

Ricoh has designed these products to meet ENERGY STAR guidelines for energy efficiency.

## PAPER HANDLING

<p>Paper input capacity:</p> <p>Paper output capacity:</p> <p>Paper size:</p>	<p>Standard: 250-sheet paper feed unit Option: 100-sheet multi-bypass tray Maximum: 850 sheets</p> <p>100 sheets (face up)</p> <p>A4, A5, A6, B5, letter, legal, half letter, executive, foolscap, folio, B6 JIS envelope: com10, Monarch, C5, C6, DL Std tray: Custom: Long edge (139.7 - 356 mm)</p>
---	--

**Aficio<sup>®</sup>**

**SG 3110DNw**

**GELJET™ Printer**

Copier  Printer  Facsimile  Scanner

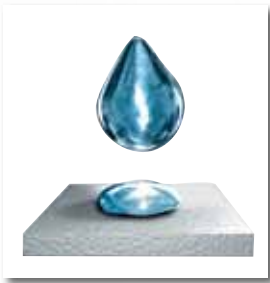


Aficio™  
SG 3110DNw

29  
ppm Colour  
B/W

## **GELJET™ : Affordable colour for every need**

Want to produce high quality colour documents on demand? You can with the Aficio™SG 3110DNw. This innovative GELJET™ printer has a small footprint, full front access and easy connectivity including WiFi. It features Ricoh's fast-drying Liquid Gel™ technology to simplify colour printing in shops, businesses and home offices everywhere.



### **The GELJET™ advantage**

Ricoh's GELJET™ printers use fast-drying viscous, pigment-based Liquid Gel™ that does not permeate paper and dries fast. It delivers high quality colour at low cost on plain paper. And, because Liquid Gel™ dries instantly, it also enables high speed double-sided printing.



### **Unique ECONOMY Color**

In ECONOMY Color mode, the SG 3110DNw can distinguish between text and images – text is printed solid black, while image thickness is reduced by half. So you get quality colour documents at virtually the cost of black and white.



### **User-friendly design**

With the control panel and operations accessible from the front, this versatile printer fits virtually anywhere. There is also easy USB and network connectivity, plus WiFi and simple envelope setup straight from the printer driver window.

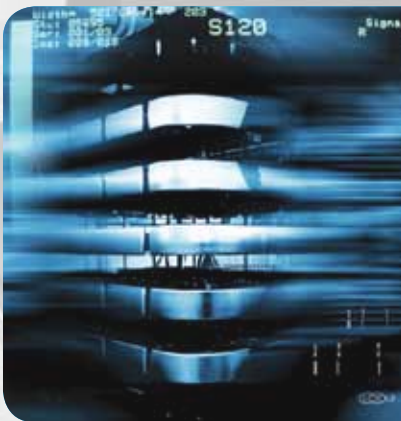


### Improved productivity

Get your first colour print in 6.5 seconds. Enjoy fast output at up to 29 pages per minute and uninterrupted print runs using high capacity paper tray options. Easily print banners, envelopes and custom papers thanks to the Multi Bypass Tray option.

### Avoid outsourcing

The SG 3110DNw can handle a wide range of paper sizes and weights. You can even print double-sided with paper-saving duplex unit. This gives you the flexibility to create a variety of professional-looking colour documents in-house.



### Reliable, secure and compliant

The SG 3110DNw has a simple architecture with a minimal number of highly durable parts - this ensures maximum reliability and long life. It also complies with the latest Energy Star and Blue Angel (BAM) international standards for energy efficiency and environmental friendliness.

### Green cost-efficiency

The SG 3110DNw's energy saving features and toxic free materials reflect Ricoh's environmental commitment. A Ricoh GELJET™ consumes 90% less power than a colour laser printer, which not only reduces CO<sub>2</sub> emissions, it also lowers your Total Cost of Ownership (TCO).

