

**RICOH**  
imagine. change.

# Ricoh Aficio SP 100SU e/SP 100SF e

Multifunction B/W Laser Printer

Copier  Printer  Facsimile  Scanner



SP 100SU e  
SP 100SF e

13  
ppm

monochrome

## Save space, time and costs with convenient, multifunction performance

Everyday document challenges in small offices can come in all shapes and sizes. Fortunately, there's a compact multifunction printer to match those challenges. The easy-to-use RICOH® Aficio® SP 100SU e/ SP 100SF e offers versatile performance — including copying, printing, scanning and faxing (SP 100SF e only) — in an ultra-small, lightweight design. Engineered specifically for tight spaces as well as tight budgets, it offers a host of intuitive capabilities to maximize productivity while minimizing operating costs. Choose this affordable multifunction printer for both value and convenience.

### Small footprint, big impact

You're fighting for business, you shouldn't be fighting for space. That's why the Ricoh Aficio SP 100SU e/SP 100SF e is designed with an incredibly thin frame that fits easily on any desk, table or counter. Take advantage of multifunction performance in a sleek, ultra-small system that streamlines light-volume workloads. It includes a standard 50-sheet paper tray and handles several sizes and thicknesses of paper stocks, so you can manage personal printing requirements with ease.



### Work quickly to improve productivity

The Ricoh Aficio SP 100SU e/SP 100SF e impresses as a personal MFP almost immediately. It offers an amazing first print time of 13 seconds or less, fast print speeds of 13 ppm and high-quality output (up to 1200 x 600 dpi) to enhance document management in smaller offices. With ID Card Copy, users can copy both sides of identification cards or important documents onto one page to save time and conserve paper. In addition, it includes 16 MB of memory (SP 100SU e) and 32 MB of memory (SP 100SF e) for seamless transition from one job to the next.



### Enjoy the simplicity of convenience

Every day offers something different. That's why the Ricoh Aficio SP 100SU e/ SP 100SF e is designed to provide exceptional versatility and convenience for long-lasting everyday performance. Users can print, copy and even scan in full-color on the SP 100SU e, while the SP 100SF e offers walk-up G3 faxing all from an easy-to-use, compact system that fits virtually anywhere in any office. It can be set up within minutes right out of the box, and includes a USB 2.0 interface for fast connection to the desktop.



# An ultra-small MFP that leaves a long-lasting impression

## Value more efficiency

Expand your business while reducing costs. The Ricoh Aficio SP 100SU e/SP 100SF e is ideal for budget-conscious users. Featuring low hardware costs and an economical cost-per-page, the system can be your personal multifunction printer while reducing total cost of ownership. It features mess-free, all-in-one print cartridges that can be replaced within seconds and offers a Toner Save Mode to reduce the amount of toner used for additional cost savings.



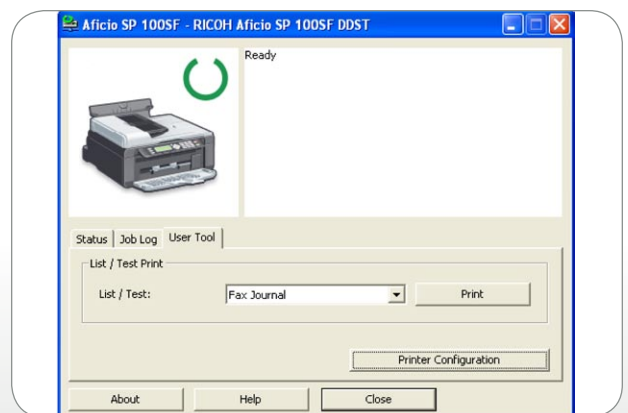
## Transmit documents via fax

Sometimes, you need access to instant hardcopy documents, including contracts and other signed forms. That's why the Ricoh Aficio SP 100SF e comes equipped with a 33.6 Kbps fax modem. This dependable system offers fast transmission at speeds as low as three seconds. It includes a two-line LCD screen for easy navigation, and a prominent dial pad for faster operation.



## See how well it performs

Users can check the performance of the Ricoh Aficio SP 100SU e/SP 100SF e at any time using the Smart Organizing Monitor. The utility can be downloaded from the enclosed CD-ROM and enables users to check and configure a wide range of settings to ensure the MFP is operating efficiently. Use it to view MFP status, paper sizes and paper types, change custom paper size settings, print reports and check toner level.



## General Specifications

Ricoh Aficio SP 100SU e	Part # 406944
Ricoh Aficio SP 100SF e	Part # 406945
Type	Desktop
Print Engine	Monochrome laser electrostatic transfer
Print Speed/Copy Speed	13 ppm (Letter)
First Print Speed	13 seconds or less*
Recovery Time to Print Ready Mode	25 seconds (from Sleep Mode)
Operating Systems	XP Home Edition, XP Professional, XP Professional x64 Edition, Vista, 7, Server 2003, Server 2008
Software Utilities	Smart Organizing Monitor
Grayscale	256 Levels
Document Feeding	Standard 15-sheet Automatic Document Feeder (ADF) (SP 100SF e only) Manual
Duplex	Manual
Standard Paper Capacity	50 sheets**
Output Capacity	10 sheets face-up
Paper Sizes	Letter (8.5" x 11"), Half-Letter (5.5" x 8.5"), Executive (7.25" x 10.5"), A4 (210 x 297 mm), A5 (210 x 148 mm), A6 (105 x 148 mm), Custom Size: 3.6" x 5.8" – 8.5" x 11.7"
Paper Weight	16 – 28 lb. Bond (60 – 105 g/m <sup>2</sup> )
Media Type	Plain Paper, Recycled Paper, Thin Paper, Thick Paper
Dimensions (WxDxH)	SP 100SU e: 15.8" x 14.5" x 6.4" (401 x 368.5 x 163 mm); SP 100SF e: 15.8" x 14.5" x 8.1" (402 x 412 x 205 mm)
Weight	SP 100SU e: 17.6 lb. (8 kg); SP 100SF e: 19.8 lb. (9 kg)
Power Requirements	120V, 60Hz
Power Consumption TEC***	Less than 600W (max.); 5W (Sleep Mode) SP 100SU e: 0.707 kWh/week SP 100SF e: 0.815 kWh/week

\*From the time the printer receives a job in ready-mode to paper ejection.  
\*\*When 70g/m<sup>2</sup> paper is used.  
\*\*\*Typical Electricity Consumption by ENERGY STAR program.

## Printer Specifications

CPU	IALE-2
Interface	High-Speed USB 2.0
Memory	SP 100SU e: 16MB (standard/maximum); SP 100SF e: 32MB (standard/maximum)
PDL	GDI (Dynamic Data Stream Technology – DDST)
Fonts	Host-based
Resolution (Max.)	1200 x 600 dpi (max)

## Copier Specifications

First Copy Speed	27 seconds or less (from ADF)
Multi-copy speed	13 cpm
Copy Resolution	600 x 600 dpi (Platen); 600 x 300 dpi (ADF)
Quantity Indicator	Up to 99
Original Type	Sheets, Books, 3D Objects (via platen)
Maximum Original Size	Platen & ADF: 8.5" x 11.7"
Reproduction Ratios	50%, 65%, 78%, 93%
Enlargement Ratios	129%, 155%, 200%
Copier Features	Density Adjustment (Lighter/Normal/Darker), ID Card Copy, Duplex Copy (manual), Text, Photo, Text/Photo Modes, Combine Copy

## Scanner Specifications

Resolution	Platen Glass: 4800 x 4800 dpi (max) ADF: 600 x 600 dpi
Scan Speed	3.9 seconds or less (B&W); 7.9 seconds or less (Full-Color)
Scan Modes	Black & White, Grayscale, Full-Color
Compatibility	TWAIN, WIA
Max. Original Size	Platen Glass: 8.5" x 11.7" ADF: 8.5" x 11.7"
PC Interface	Full-Speed USB 2.0
Scanning Capabilities	Photo, Text, Text/Photo, Image Quality Adjustment, Orientation

## Facsimile Specifications (SP 100SF e only)

Circuit	PSTN, PBX
Compatibility	ITU-T Group 3
Number of Lines	1
Resolution	200 x 100 dpi (8 lines/mm x 3.85 lines/mm) 200 x 200 dpi (8 lines/mm x 7.7 lines/mm)
Modem Speed	33.6 Kbps to 2400 bps (with Automatic Fallback)
Transmission Speed	Approximately 3 seconds
Compression Speed	MH/MR/MMR
Memory Capacity	Transmission: Up to 5 jobs; up to 10 pages per job Reception: Up to 50 jobs; up to 100 pages in the total of all jobs Up to 500 pages (ITU-T Test Chart #1)
Memory Transmission Speed Dials	100 locations
Number of Redials	3 times at 5 minute intervals
Fax Features	Broadcasting, Dual Access, Memory Transmission (up to 500 pages), Page Retransmission

## Accessories and Options

USB 2.0 Cable	Part # 004051MU
---------------	-----------------

## Consumables & Yields

	Yield	Part #
All-in-One Print Cartridge	1,200 prints	407165
Type SP 100LA		

\*Declared yield values in accordance with ISO/IEC 19798 (equivalent to approx. 5% image coverage). Actual yields may vary based on images printed and other factors.

The Ricoh Aficio SP 100SU e/SP 100SF e ship with a starter toner cartridge that yields approximately 500 pages.

## Warranty

The Ricoh Aficio SP 100SU e/SP 100SF e is under warranty against defects for a period of one year from the date of purchase. Consumables are under warranty for a period of 90 days from the date of purchase or until depleted, whichever comes first. Please refer to warranty documents shipped with the product for more details.