

Continuous Feed Inkjet Printer

# RICOH Pro VC40000

**RICOH**  
imagine. change.



Pro VC40000

492 fpm	590 fpm
full-color	b&w

## Creating new value for your business

Featuring a maximum resolution of 600 x 600 dpi and a maximum printing speed of up to 590 feet per minute, the RICOH Pro VC40000 provides high printing precision, tools to manage ink consumption and page cost without compromising print quality, and an impressive range of media support. This combination results in potentially printing a wide breadth of applications—from personalized communications, MICR applications, direct mail, booklets, brochures and sales collateral. Let the Pro VC40000's speed, quality and versatility change your business. With the Pro VC40000 in your operation, you can gain that competitive edge while you:

- Build a foundation for growth that enables you to attract new customers while strengthening current relationships.
- Improve productivity and throughput so you can meet tight turnaround times as well as take on more jobs.
- Simplify color management to result in predictable, accurate, and consistent color.
- Deliver the repeatable high quality that helps your customers effectively communicate and engage the end-consumer.
- Maintain market relevance with technology upgrades and product enhancements.
- Partner with a vendor whose consultative approach assures you that you are making the right investment to enable your success.



## Become a market leader known for quality and speed

### The Market is Changing

Change. It's the one constant in our world. Customers in the Transactional and Direct Mail markets demand higher quality color and faster turnaround times. Your success depends on how well you deliver on those requirements. The Pro VC40000 is built to meet the most demanding requirements, and consistently provide the quality, reliability and performance you need.



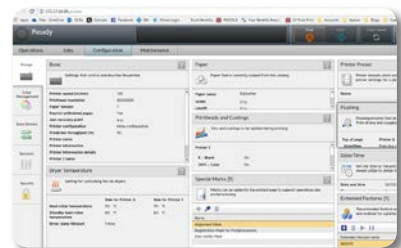
### It's always about time and money

Your customers are demanding faster turnaround times and are constantly pressured to manage their costs. With the Pro VC40000, the combination of short make-ready and high speed printing ensure that you can under promise and over deliver. In addition, print buyers used to make purchase decisions based on the lowest per unit price. But with inventory costs and waste, print buyers are now realizing it is more cost effective to print as needed, with no compromise on quality with the Pro VC40000.



### Maximize productivity and capacity

The Pro VC40000 can help you expedite jobs in several ways. Shorter make-ready times enable operators to put jobs into production with minimal setup. The touch screen interface makes it easy for operators to run jobs accurately, reducing manual intervention throughout the printing process. The system uses a built-in scanner to automate common tasks such as printhead cleaning and print quality adjustments. In addition, you won't be slowed down by different workflows because they can be integrated, even in mixed environments.



# Combining speed, quality and reliability

## A production platform to build your business on

- 1 Tight web keeps the paper under tension throughout the printing process for precise color-to-color and side-to-side registration.
- 2 Chiller rollers between print engines to cool the sheet before entering the second engine to minimize print quality issues.
- 3 L, Inline and Dual Simplex system configurations.
- 4 Optional venting to disperse heated air from the ambient environment.
- 5 Maximum print productivity on uncoated, IJ treated, IJ coated papers at 600 dpi.
- 6 Halogen lamp heated dryer systems.
- 7 TotalFlow® Print Server R600A with scalable blade technology to support the most demanding applications.
- 8 Five inch printhead modules to prevent banding and ensure printing stability (not shown in image).
- 9 Aqueous based dye inks from 18 L cartridges feed both engines. Cartridges can be changed on-the-fly (not shown in image).
- 10 Separate K, CMY and MICR printhead arrays allow for cost effective printing of monochrome and MICR applications.
- 11 Optional 3<sup>rd</sup> row of K print heads to increase monochrome printing speed to 590 ft/min (180m/m).
- 12 Optional space saving Parallel Chiller Roller Unit available for Inline Configuration.





The RICOH TotalFlow® Print Server R600A, a powerful and scalable platform that can be expanded to keep up with increasing complex print applications.



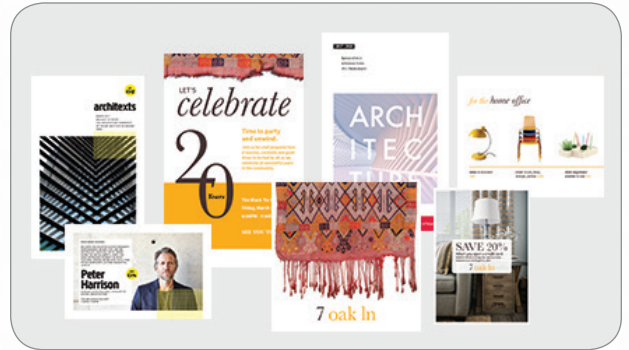
RICOH Pro VC40000



## Capitalize on new revenue opportunities while you contain costs

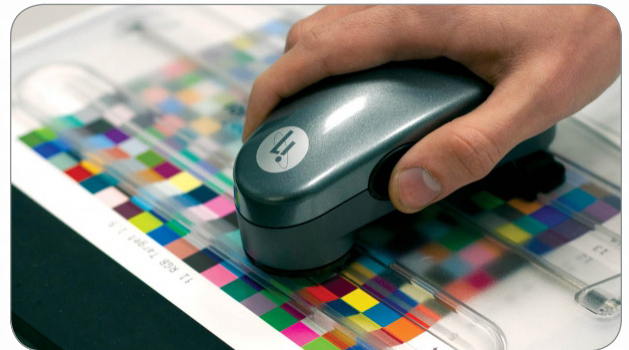
### Deliver consistent high quality results

Print quality is key to producing vivid, compelling materials that capture attention and engage readers. Ricoh pioneered the use of variable drop size technology to provide the highest print quality with efficient ink consumption. Each dot on every page is analyzed and optimized for maximum print quality. Ricoh's Variable Drop Technology produces crisp text and lines and smooth halftones while avoiding artifacts like moire patterns produced by fixed drop size systems.



### Simplify color management

The Pro VC40000 produces the color results your customers require every time, even across multiple devices. Ricoh's color management experts can assist with color matching, color calibration, conformance to color standards, as well as help manage ink usage to control costs and optimize print production, without compromising on color quality.



### Operate confidently with reliable performance

The Pro VC40000 is part of Ricoh's continuous feed inkjet family that has demonstrated exceptional dependability in the most demanding production print environments for years. Reliability is built into the platforms in several ways, including the use of industrial strength materials, proven paper transports and printhead technology. The life of the color printheads is extended because they remain stationary during monochrome printing—an approach that also reduces ink consumption significantly. Additionally, compared to competitive systems, the printheads require fewer and shorter operator maintenance tasks.



## Maximize ROI based on a holistic solution: people, process, technology and support

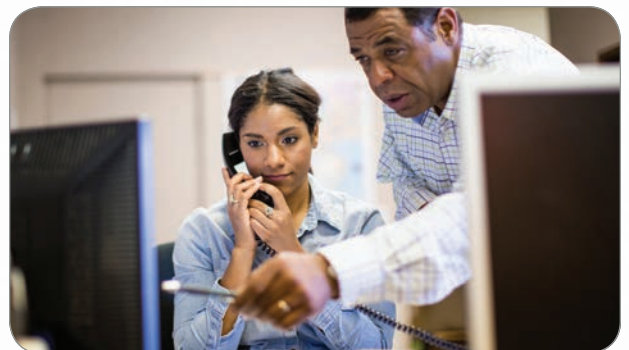
### Investment protection through enhancements and upgrades

It's difficult to maximize return on investment when you are locked into a static design or system, which may require a forklift upgrade when market conditions or customer requirements change. Flexibility and scalability are essential to your long-term success, and that's why they are core elements of Ricoh's product design philosophy.



### Industry-leading service and support

It takes more than "the box" to sustain success. Ricoh's dedicated production print service organization is one of the largest in the country. Our escalation and alert process ensures timely response, diagnosis and resolution. Technicians receive ongoing training and work against Key Performance Indicators (KPIs) aligned with your requirements. The nationwide parts network ensures that parts are readily available.



### A consultative approach to guide in your investment decision

As you evaluate a new continuous feed inkjet system, you want to be sure you're making the right choice that allows you to get up and running into revenue producing production as quickly as possible. Ricoh's seven-step process reviews your current business and print applications, as well as your future business requirements. The process includes checks and balances that help identify the considerations that might affect your purchase decision. This rigorous approach carries over to planning your implementation to avoid unforeseen pitfalls. After installation, we follow-up regularly to confirm that we and our products continue to meet your expectations. After all, Ricoh's success is based on your success.



# RICOH Pro VC40000

## SYSTEM SPECIFICATIONS

### Engine Technology

<b>Print System</b>	Drop on demand (DOD), piezoelectric
<b>Color</b>	4-color (CMYK), 2 bits per spot, dynamic variable drop size at every point on the page, stochastic screening
<b>Resolution/Speed</b>	600 x 600 dpi @ 394 ft./min (120 m/min) 600x450 dpi @ 492ft/min (150m/min), 600x600 dpi Monochrome Only @ 590ft/min (180m/min)
<b>Print Width</b>	5.9–20.5 inches (150–520 mm)
<b>Page Length</b>	4–54 inches (101.6–1,371 mm))
<b>Paper Width</b>	6.5–20.5 inches (165–520 mm)
<b>Paper Weight</b>	40–250 gsm

\*Over 157 gsm, maximum print speed is 328 ft./min. (100 m/min)

<b>Paper Types</b>	Uncoated, inkjet treated, inkjet coated, pinless and pin-fed
--------------------	--

### Engine Components

<b>Base Unit*</b>	
Dimensions (WxDxH)	127.6" (3240 mm) x 73.6" (1870 mm) x 77.6" (1971 mm)
Weight	6063 lbs. (2750 kg)

### Power Requirements

<b>Connection:</b>	Low Voltage: 208–240V 102A per engine High Voltage: 380–415V, 69A per engine
<b>Power Consumption:</b>	Idle: 16kWh, 51kBTU/hr Printing: 63kWh, 216kBTU/hr

\*Typical printing conditions for 20-24lb bond paper at 394 ft/min, dryer temperature 60° C

### Operating Range

<b>Temperature:</b>	Recommended: 64.4° F–75.2° F (18~24° C)
<b>Humidity:</b>	Recommended: 40–60%
<b>Noise:</b>	85dB
<b>Dryer:</b>	Single-drum dryer per engine
<b>Dryer Temperature:</b>	Range: Up to 194° F (90° C) Ventilation: Optional
<b>Ink:</b>	Dye ink, 2 18L cartridges for each color. Replace on the fly

<b>Controller:</b>	TotalFlow R600A Digital Front End
<b>Data Stream Support:</b>	Postscript Level 3, PDF 1.7, PDF/VT, IPDS (IS3)
<b>Connectivity:</b>	Gigabit Ethernet

### Color Management

ICC Profile Support  
Enhanced Color Management by Side and Object Type  
Device Link Support  
Spot color dictionaries (Pantone, Toyo, DIC, and HKS)  
CMR Support (AFP/IPDS)

### Software Support

Ricoh ProcessDirector for AIX, Linux, or Windows  
Version 3.2 or later releases  
TotalFlow BatchBuilder for Windows  
Version 1.1  
InfoPrint Manager for AIX, Linux, or Windows  
Version 4.5 or later releases  
Print Services Facility for AIX, Linux or Windows  
Version 3.1 or later releases

Note: For Linux SLES or Red Hat

### TotalFlow R600A Digital Front End

#### Architecture

<b>Processor Architecture</b>	Intel Xeon x64
<b>OS</b>	Linux

#### Physical Characteristics

<b>Dimensions (WxDxH)</b>	39.5" (1003 mm) x 24" (609 mm) x 49" (1245 mm)
<b>Weight</b>	716.5 lbs. (325 kg)

#### Data Stream Support

PostScript  
PDF (APPE)  
PDF/VT  
IPDS

### Job Submission

FTP  
IPP  
LPR  
Raw Port  
Operator Console  
Virtual Printer/Hot Folder Support

### Graphical User Interface

Display on each print engine  
Login by Role: Admin, Operator, Maintenance or Customizable  
Highly customizable user interface layout by role  
Graphical Printer & Supplies Status  
Operator Messages  
Paper Catalog/Paper Setup

### Job Management

Graphical Job Ticketing/Job Preview – Native JDF  
Banner  
Operator Comments  
Sides Printed  
Copies  
Rotate, Reduce/Enlarge, Image Alignment  
Special Marks  
Job Imposition  
Job Queue Management  
Submit  
Suspend  
Hold  
Process Next  
Delete Job  
View Jobs  
Job Status  
Active  
Inactive  
Stored  
All Jobs  
Job History

**RICOH**  
imagine. change.

[www.ricoh-usa.com](http://www.ricoh-usa.com)

Ricoh USA, Inc., 300 Eagleview Blvd, Exton, PA 19341, 1-800-63-RICOH  
©2019 Ricoh USA, Inc. All rights reserved. Ricoh® and the Ricoh logo are registered trademarks of Ricoh Company, Ltd. All other trademarks are the property of their respective owners. The content of this document, and the appearance, features and specifications of Ricoh products and services are subject to change from time to time without notice. Products are shown with optional features. While care has been taken to ensure the accuracy of this information, Ricoh makes no representation or warranties about the accuracy, completeness or adequacy of the information contained herein, and shall not be liable for any errors or omissions in these materials. Actual results will vary depending upon use of the products and services, and the conditions and factors affecting performance. The only warranties for Ricoh products and services are as set forth in the express warranty statements accompanying them.

