

RICOH Pro C900/C900s
Color Production System
Improve Capacity and Flexibility

RICOH

workflow



speed



versatility



RICOH Pro C900/C900s Color Production System

This fast, flexible system meets all your business needs. Faster performance for variable data printing. Higher throughput during peak production. Greater flexibility for inline finishing. Lower costs for full-color applications. The RICOH® Pro C900/C900s delivers all of these advantages, and much more. With this cost-effective, production-class color system, you can also have convenient scanning and copying. Either way, you can accept more specialty jobs and capitalize on every opportunity to grow your business.

The RICOH Pro C900 delivers high-volume color printing while the RICOH Pro C900s adds built-in scanning, copying and document serving functionality. Both systems offer extensive inline finishing options.



ProductivitySpeedQualityConsistency

Versatile Imaging, Exceptional Color

Equipped to produce an incredible variety of color documents, this versatile digital color production system empowers you to take on new kinds of jobs, finish them faster and keep your customers coming back for more.

- Deliver every document faster with a 90 page-per-minute print engine. This high-speed, high-volume system lets you add capacity, offload work from other systems or migrate jobs to more cost-effective technology—all of which grow revenue.
- Maintain profitability. The RICOH Pro C900/C900s is engineered to provide maximum uptime enabling you to consistently deliver jobs on time.
- Replace toner bottles, as well as reload and auto-link Media Trays, without stopping jobs in progress, enabling long, unattended print runs.
- Never let your choice of media hinder productivity. The RICOH Pro C900/C900s handles heavy media weights without slowing down, so you can reduce turnaround time for direct mail and Variable Data Printing (VDP) jobs.
- Navigate through the print controller and program tasks quickly on the user-friendly, easy-to-read, 10.4-inch color touch-screen display.
- Add the service and support network of Ricoh, a trusted global brand, and the result is a responsive organization dedicated to your business needs.

Multifaceted Capabilities

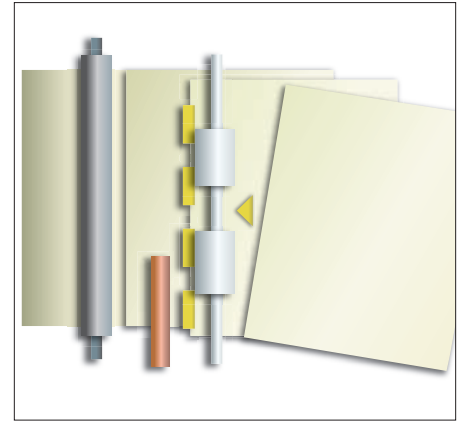
The RICOH Pro C900s offers versatile scanning, copying and document storage, making it ideal for environments that need one system to do it all.

- Capture originals with resolutions up to 1200 dpi for exceptionally smooth reproduction of images, text, graphics and tonal gradations.
- Integrate documents into unique workflows or distribute documents throughout the enterprise with a full array of Scan-to destinations, including e-mail, URL, FTP, SMB, mailbox, hold queue, and more.
- Save precious production time by scanning hardcopy originals directly into any TWAIN-compliant desktop application.
- Preview, modify and reprint commonly used documents without re-RIPing them by storing them on the 410 GB Document Server.

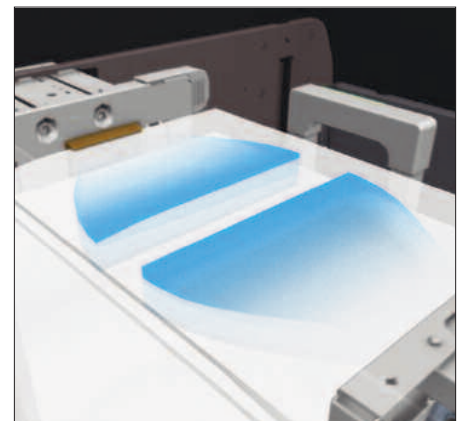
Consistent, Repeatable Quality

The RICOH Pro C900/C900s delivers consistent, high-quality color output on a wide variety of media, even in demanding production environments.

- Captivate customers with exceptional 1200 x 1200 dpi image quality. The RICOH Pro C900/C900s provides the same high resolution as higher-volume systems, so you can send short-run jobs to a less expensive solution.
- Expect consistent toner coverage in high-color areas because of the system's stabilizing, single-direction development method.
- Produce a wider range of colors using specially formulated toner technology.
- Achieve consistent color quality from print-to-print and over long runs with innovative self-checks and real-time calibration that adjust and compensate for color shifts.



To ensure extremely accurate sheet-to-sheet registration, the RICOH Pro C900/C900s physically adjusts each sheet for skew, position and alignment, and automatically changes rotation speed to compensate for minor differences in timing created by these adjustments.



The Air-Assist feature separates individual sheets to counteract static cling and eliminate multi-feeds, making it easy for you to run more jobs that require coated media.

Engineered for Reliable Performance

Take a Closer Look at the RICOH Pro C900/C900s Production System Build the perfect digital color production system for your company's needs with the flexible RICOH Pro C900/C900s.

Trained Customer Replaceable Units

Trained Customer Replaceable Units (TCRUs) enable trained operators to replace key hardware components quickly without waiting for the service technician. The end result is greater uptime, which enables you to generate more revenue.

Easy Toner Replacement

Replace toner on the fly without interrupting production. Just load a toner bottle into the slot and slide it in.



Convenient Inline Finishing

Choose the right finishing capabilities for a variety of specialty requirements. With multiple options, you can configure a complete, end-to-end document finishing solution that aligns with your customers' needs. Inline finishing also lets you process complex jobs without taking them offline for manual finishing.

@Remote™

Ensure accurate, timely meter reads and billing. The RICOH @Remote™ diagnostic solution collects device service and error log data remotely and reports media and toner alerts.

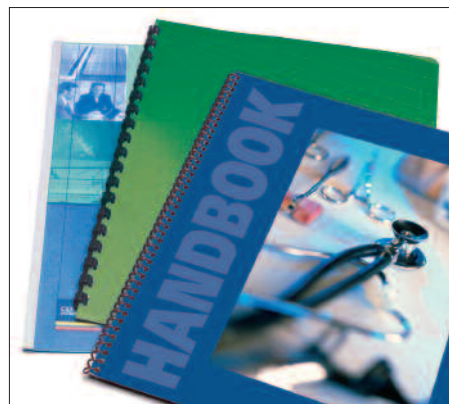
Workflow

Select from three powerful print controllers, depending on your specific workflow and application requirements.



RB5000 Ring Binder

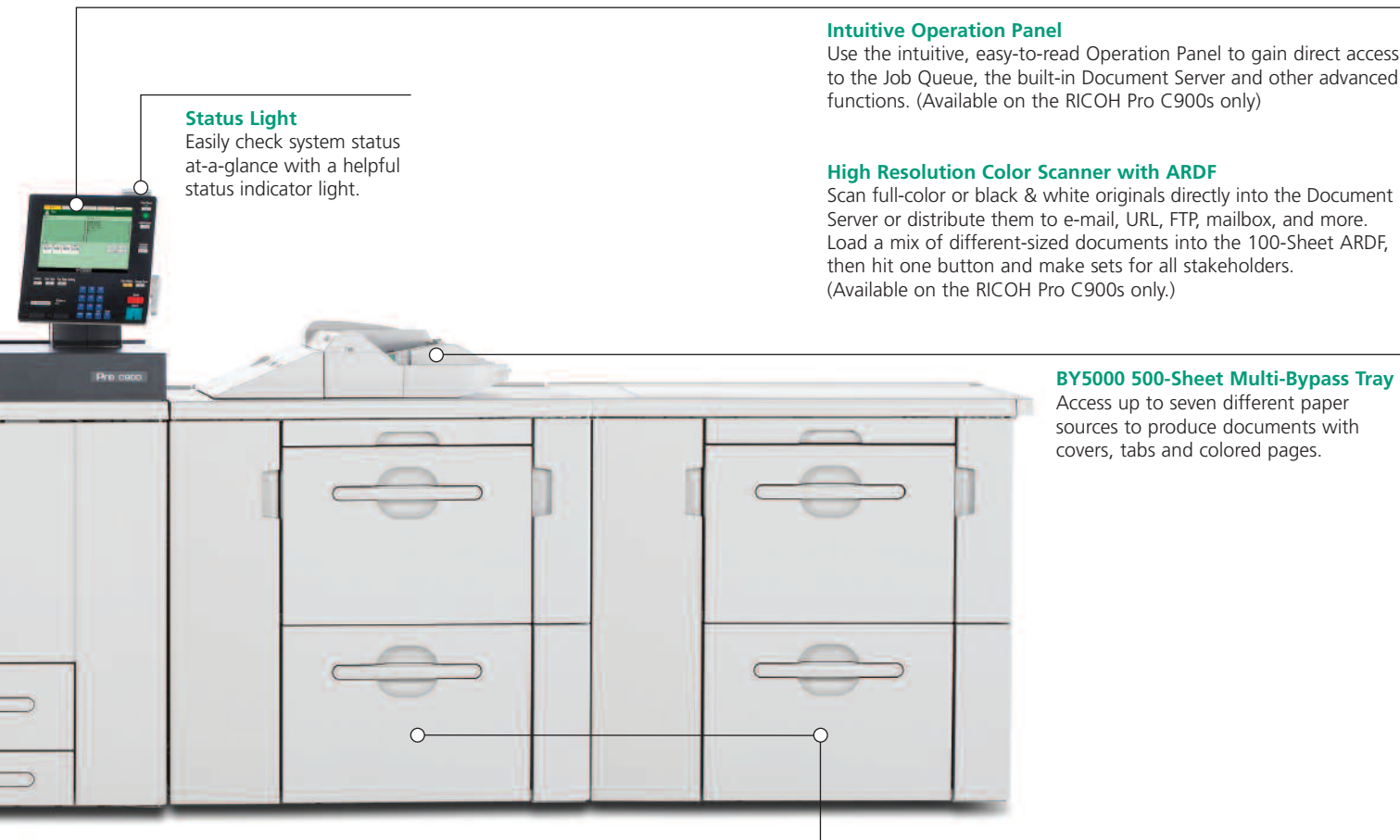
The Ring Binder automates the entire binding process, by punching, collating and applying the ring bind without any manual intervention. Choose two ring sizes for documents up to 50 or 100 sheets.



GBC StreamPunch™ III

This interchangeable die punch unit rapidly produces punched and collated documents in a variety of binding styles—which are then bound in an off-line operation.

InnovationSpeedColorFinishing



Status Light
Easily check system status at-a-glance with a helpful status indicator light.

Intuitive Operation Panel
Use the intuitive, easy-to-read Operation Panel to gain direct access to the Job Queue, the built-in Document Server and other advanced functions. (Available on the RICOH Pro C900s only)

High Resolution Color Scanner with ARDF
Scan full-color or black & white originals directly into the Document Server or distribute them to e-mail, URL, FTP, mailbox, and more. Load a mix of different-sized documents into the 100-Sheet ARDF, then hit one button and make sets for all stakeholders. (Available on the RICOH Pro C900s only.)

BY5000 500-Sheet Multi-Bypass Tray
Access up to seven different paper sources to produce documents with covers, tabs and colored pages.

Broad Range of Media
Run a wide variety of conventional and specialty stocks (in sizes up to 13" x 19.2") and take on more jobs, regardless of media requirements. Print drivers support advanced page programming for mixed media, so you can automate the selection of stocks during job preparation and submission. You can also load a mix of different-sized documents into the ARDF, then hit one button and make sets. (ARDF available on the Pro C900s only)

Large Capacity Tray with Air-Assist Feeding
With two trays that each hold up to 2,000 sheets, including sizes up to 13" x 19.2", the LCIT RT5020 Large Capacity Tray* allows you to easily accommodate 11" x 17" jobs with full bleed—including crop marks, registration marks and color bars.

*The Pro C900 can be configured with up to two optional LCITs.
The Pro C900s can be configured with one additional optional RT5020 LCIT.



GB5000 Perfect Binder*
Meet customer demand for inline perfect-bound books from 10 to 200 pages (400 pages in duplex mode). This finisher automatically trims collated pages (three sides or one side) and applies the perfect binding without operator intervention, so you can reduce labor costs.

*Please contact your RICOH Pro C900/C900s Sales Representative for availability.



SK5000 High Capacity Stacker
The High Capacity Stacker enables longer unattended print runs, providing up to 10,000-sheet stacking capability when two SK5000 units are configured. Each stacker comes with a roll-away cart for transporting stacked output to off-line bindery operations.

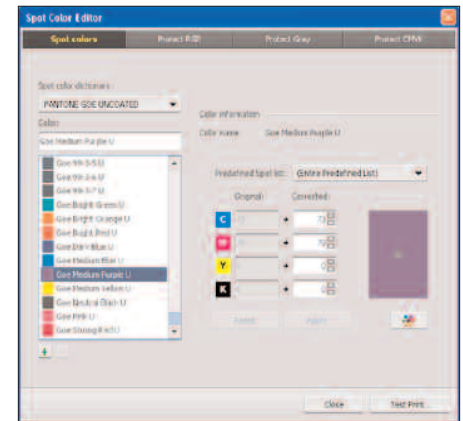
RICOH Pro C900/C900s Color Production System

Optimize Color Performance

The Color Controller C-80*, powered by Creo Color Server Technology, offers full graphic arts management tools for out-of-the-box job control and editing, making it ideal for any production environment.

- Maximize productivity. The Creo Fusion board allows you to RIP one file while printing a separate file simultaneously, as well as make changes to a processed job without re-RIPing the file.
- Streamline job processing with seamless integration to graphic arts workflows, including Kodak (Scitex) Brisque, Kodak Prinergy and Agfa:Apogee.
- Apply separate rendering styles to text and images to optimize final output quality while accelerating job processing time.
- Capitalize on the rapidly expanding personalization market with extensive built-in VDP capabilities.
- Expect accurate, consistent results with out-of-the-box color and image quality.
- Bridge the gap between offset and digital printing with built-in JDF support.

*Only available on the RICOH Pro C900.

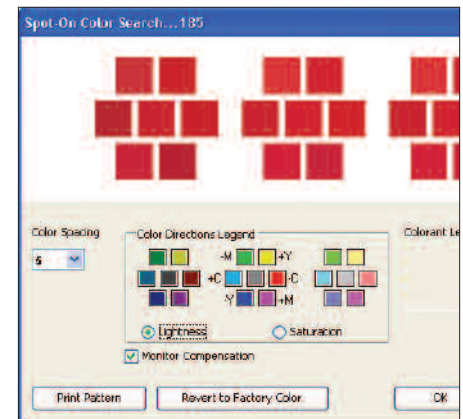


Intelligent Color Management allows you to adjust color output to suit a variety of application-specific needs.

Advanced Workflow Control

The Color Controller E-80, powered by EFI® Fiery® QX100 Server technology, is ideal for handling complex print jobs with exceptional speed.

- Improve overall print management. The E-80 controller meets the needs of printing environments where advanced color management, high productivity and speed are critical to ensure success and profitability.
- Take advantage of the growing popularity of Variable Data Printing (VDP). With this controller, you can implement open architecture and flexible VDP solutions to add value to documents and increase volume of customized output.
- Increase processing speed. The E-80 controller features an extremely fast dual-processor architecture and the ability to RIP one file while printing another, enabling it to produce documents much faster than other high-speed systems.
- Achieve total control with automated workflow for all print jobs. Administration is streamlined through Command WorkStation software, which makes it easy for operators to monitor, control and troubleshoot production.
- Ensure precise color management. This controller provides outstanding color control and includes professional-grade tools for color management, proofing and controlling color workflow.



Whether you decide on the standard Fiery print controller or the E-80 print controller, you have access to the same set of Fiery tools and functions supporting your workflow environment.

Powerful EFI Fiery Controller

The RICOH Pro C900/Pro C900s offers a standard Fiery print controller that establishes end-to-end control over job processing at every stage of production.

- Create a smooth, uninterrupted and completely transparent process that covers Web-to-print submission, ticketing, acceptance, pre-flight, make-ready, print production, job management, finishing, archiving/retrieval and accounting.
- Use advanced profile creation tools to ensure color matching across a wide range of input and output devices.
- Leverage the smartest, most effective workflow solutions and streamline every aspect of your production environment through Ricoh's partnerships with proven industry-leading technology innovators. These partners enable Ricoh to coexist seamlessly within current production environments.
- Get a comprehensive view of the print queue of one or more networked Fiery-driven devices using EFI Command WorkStation.

The Total Green Solution



Ricoh continues its long-standing commitment to developing solutions with environmentally friendly and superior energy- and supply-saving features, without compromising productivity.

Flexible Efficient Profitable Reliable

Choose the Right Controller for Your Workflow

The RICOH Pro C900/C900s offers a choice of print controllers, all of which incorporate powerful file processing and color management technology from EFI. The controller that will align best with your needs depends on the types of jobs and print volume your production environment handles.



Standard Workflow

The standard Fiery Controller handles a wide range of applications and drives the Pro C900/C900s at peak performance. Although it is fully integrated, this controller is a server-based platform that offers excellent production and outstanding value.

Production-Focused Workflow

Ideal for generating personalized VDP jobs, the Color Controller E-80 delivers the speed, productivity and seamless workflow controls required for high productivity and precise results. It also offers versatile color management tools designed for graphic arts applications.

Graphics-Intensive Workflow

The Color Controller C-80, powered by Creo Color Server Technology, is a high-performance, high-end color server designed for professional graphic arts, mid-production, CRDs, creative agencies and commercial printers. It also comes equipped with the speed and workflow controls required for VDP applications.

EFI Fiery Print Controller Specifications (Standard)

CPU	Intel Core Duo 2.16 GHz
Memory	2 GB
Hard Disk Drive	500 GB (250 GB x 2)
Operating System	Windows XP
Fiery System Version	Fiery System 8.0 Release 2
Page Description Languages	Genuine Adobe® PostScript® 3™, PCL5c, PCL6
Network Interface	Ethernet 1000/100/10BaseT
Network Protocols	TCP/IP (IPv4, IPv6), Apple Talk, SMB
Client Operating System Support	Windows 2000/2003/XP/Vista Mac OS/X v10.3.9 or later
Standard Utilities	
Print Submission & Management	EFI Driver, EFI Command WorkStation® (PC & Mac), Fiery WebTools, EFI Hot Folders, EFI Virtual Printer, Macintosh Print Center Plug-Ins, Rush Printing, Print/Process Next, Advanced Job Re-Order, Suspend On Mismatch, Quick Doc Merge, Schedule Print
Color Management & Proofing	EFI Fiery ColorWise®, Fiery Graphic Arts Package
Imposition & Document Assembly	Mixed Media, Paper Catalogue, Tab Shift, Insert Tab, Booklet Maker, EFI Impose, Fiery Edition
Variable Data Printing	PPML, EFI Fiery FreeForm®, Fiery VDP Resource Manager, Creo VPS
Additional Utilities	Web Image Monitor, Ricoh @Remote
Optional Utilities	
Color Management & Proofing	EFI Fiery Color Profiler Suite V2.2
Imposition & Document Assembly	EFI Compose Fiery Edition
Color Measurement	ES-1000 Color Spectrophotometer

Color Controller E-80

CPU	Intel Xeon (Quad-Core) E5450 3.00 GHz x 2
Memory	2 GB
Hard Disk Drive	500 GB (250 GB x 2 for data), 82 GB (for OS)
Operating System	Windows XPe
Fiery System Version	Fiery System 8.0 Release 2
Page Description Languages	Genuine Adobe® PostScript® 3™
Network Interface	Ethernet 1000/100/10BaseT (2 ports)
Network Protocols	TCP/IP (IPv4, IPv6), Apple Talk, SMB
Client Operating System Support	Windows 2000/2003/XP/Vista Mac OS/X v10.3.9 or later

Standard Utilities

Print Submission & Management	EFI Driver, EFI Command WorkStation (PC & Mac), Fiery WebTools, EFI Hot Folders, EFI Virtual Printer, Macintosh Print Center Plug-Ins, Rush Printing, Print/Process Next, Advanced Job Re-Order, Suspend On Mismatch, Quick Doc Merge, Schedule Print
Color Management & Proofing	EFI Fiery ColorWise, Fiery Graphic Arts Package Premium Edition
Imposition & Document Assembly	Mixed Media, Paper Catalogue, Tab Shift, Insert Tab, Booklet Maker, EFI Impose, Fiery Edition
Variable Data Printing	PPML, EFI Fiery FreeForm, Fiery VDP Resource Manager, Creo VPS
Additional Utilities	Ricoh @Remote
Optional Accessories	
Color Management & Proofing	EFI Color Profiler Suite V2.2
Color Measurement	ES-1000 Color Spectrophotometer
HDD Security	Removable HDD
Print Management	FACI bundle (keyboard, monitor, mouse and stand)

Color Controller Creo C-80 Platform*

CPU	Intel Core2 Quad, 2.66 GHz, 6 MB, 1333 MHz
Memory	2 GB System memory 3 GB Image memory
Hard Disks	250 GB User Disk
Configuration	750 GB Printer (Image) disk
Creo Color Server	FusionRA board for dedicated image processing
Operating System	Windows XPe
Ports	4 x USBs, 1 Serial Port, 2 Ethernet Ports
Hardware Accessories	Mouse and keyboard - included DVD R/W - included Monitor 19" wide - included X-Rite i1 Spectrophotometer - included Product stand - optional
Network Interface	Ethernet 1000/100/10BaseT
Network Protocols	TCP/IP (IPv4, IPv6), AppleTalk, Bonjour, SMB
Client Operating Systems	Windows 2000, 2003, XP, Vista, Mac OS/X v10.3.9 or later

Page Description Languages	PDF, PostScript 3, PPML, VPS
Native Files Supported	.ppt, .doc, .txt, .xls
Job Ticket Workflow	CIP3, JDF, JMF, Creo Color Server Job Ticket
Print Submission	Hot Folders, Virtual Printers, Print Drivers for Mac and PC
PrePress Compatibility	Brisque jobs, CT/LW, Tiff/Tiff-IT, PDF to Go and others
Variable Data Printing	Compatible with most industry standard VDP applications. Standard and Gallop modes, VDP File Creator GRACol, FOGRA, SWOP
Color Management Default Profiles	
Profile Support	Default ICC profiles, Import ICC, PDF/A1 Profile
Image Quality	Object Oriented, Calibration and Output Curve support
Spot Color Support	Pantone, DIC, Pantone Goe, Toyo
Color Measurement	X-Rite i1 Spectrophotometer (included)
Standard Utilities	
Professional Power Pack	Progressive printing (PROG's), advanced VDP and color management tools, Imposition Template Builder tool, dynamic page exceptions, job slug line, and more. Includes Adobe Acrobat version 9.0 standard and Encfocus PitStop Acrobat plug-in version 08 (Professional Power Pack)
Optional Utilities	
Process Power Pack	Parallel RIP—speeds up production time by running two jobs simultaneously Photo Touch-up Software—photo processing software for improved results
Hardware Accessories	Product stand
Security	
Application Security	Password printing from client on job level, login levels set by the system administrator, remote access operation restrictions
Data Security	Disk Wipe, format image disk, automatic data deletion policy (job level or system level), configuration backup
System Security	Microsoft XP Operating System security standards, auto update Microsoft hot fixes, support installation and configuration of 3rd-party antivirus software

*Only available on RICOH Pro C900.

RICOH Pro C900/C900s

Specifications

Main Unit

Main Unit Base Configuration	Pro C900 Base Unit includes Plotting Engine, 2 x 1,000-Sheet Tandem Tray, 1 x 500-Sheet Tray and 10.4" Operation Panel
Printing Process	Dry electrostatic transfer with internal transfer belt; 4-drum method
Print Resolution	1200 dpi
Output Speed	8.5" x 11": 90 pages-per-minute in BW and full-color
Warm-Up Time	Less than 420 seconds
Maximum Input	11,000 sheets (fully configured)

Pro C900

Standard Media Capacity	Tray 1: 2 x 1,000 sheets tandem Tray 2: 1 x 500 sheets
Media Size	Tray 1: 8.5" x 11" (tandem), 11" x 17"*
(Standard Input Trays)	Tray 2: 5.5" x 8.5" - 13" x 18"
Media Weight	Trays 1 & 2: 16 lb. Bond - 80 lb. Cover
Dimensions (WxDxH)	49.2" x 43.3" x 56.7"
Weight	1,543.3 lbs. (700 kg) or less
Power Requirements	240V, 24A

Pro C900s

Standard Media Capacity	Tray 1: 2 x 1,000 sheets tandem Tray 2: 1 x 500 sheets Tray 3: 2,000 sheets (Air-Assist) Tray 4: 2,000 sheets (Air-Assist)
Media Size	Tray 1: 8.5" x 11" (tandem), 11" x 17"*
	Tray 2: 5.5" x 8.5" - 13" x 18"
	Tray 3: up to 13" x 19.2" (Air-Assist)
	Tray 4: up to 13" x 19.2" (Air-Assist)
Media Weight	Trays 1 & 2: 16 lb. Bond - 80 lb. Cover Trays 3 & 4: 16 lb. Bond - 110 lb. Cover
Maximum Output	13,000 sheets (fully configured)
Dimensions (WxDxH)	102.6" x 43.3" x 55.5"
Weight	2,072.3 lbs. or less
Power Requirements	208 - 240V, 24A, 50/60 Hz, Single Phase
Maximum Power Consumption	Less than 5,500W

*With optional Tandem Tray Converter.

Optional Input and Finishing Accessories

Optional Input Trays

LCIT RT5000 Letter Size Capacity Tray

RT5000 Letter/A4	Tray 1: 1,000 sheets
Large Capacity Tray	Tray 2: 1,000 sheets Tray 3: 2,550 sheets

LCIT RT5020 13" x 19.2" Large Capacity Tray*

Media Capacity	2 x 2,000-Sheet Trays Air-Assist
Media Size	5.5" x 8.5" - 13" x 19.2"
Media Weight	16 lb. Bond - 110 lb. Cover

*Up to two LCIT RT5020s can be added per Pro C900 and one LCIT RT5020 per Pro C900s. BU5000 Bridge Unit required with second RT5020.

BY5000 500-Sheet Multi-Bypass Tray*

Media Capacity	500 sheets
Media Size	5.5" x 8.5" - 13" x 19.2"
Media Weight	16 lb. Bond - 80 lb. Cover

*BY5000 requires an LCIT RT5020 on the Pro C900 or a second RT5020 on the Pro C900s.

CI5010 2-Tray Cover Interposer

Stack Capacity	2 x 200 sheets
Media Size	5.5" x 8.5" - 13" x 19.2"
Media Weight	17 lb. Bond - 80 lb. Cover

SR5000 3,000-Sheet Finisher/Stapler

Media Size	Up to 13" x 19.2"
Media Weight	Proof Tray: 16 lb. Bond - 80 lb. Cover Shift Tray: 16 lb. Bond - 110 lb. Cover

Stack Capacity

Proof Tray: 500 sheets (8.5" x 11" or smaller)
Shift Tray: 3,000 sheets (8.5" x 11" or smaller)

Staple Capacity	2 to 100 sheets: 8.5" x 11" 2 to 50 sheets: 5.5" x 11" or 11" x 17"
Staple Positions	Top, Bottom, 2-Staples, Top-Slant
Accessories	Hole Punch Unit (2/3 holes)

BK5000 Saddle Stitch Unit

Media Size	11" x 17" SEF, 8.5" x 14" SEF, 8.5" x 11" SEF, 12" x 18" SEF
Media Weight	17 lb. Bond - 24 lb. Bond
Maximum Booklet	15 sheets/20 lb. Bond
Stacking Capacity	30 sets

ZF4000 Z-Fold Unit

Media Size	8.5" x 11" x 14"
(Shift & Proof Tray)	11" x 17" SEF
(Staple Tray)	11" x 17"
Media Weight	17 - 20 lb. Bond

GB5000 Perfect Bind Unit

Book Size	Width: 7.81" x 11.69" Length: 5.5" x 8.5"
Media Weight	17 lb. Bond - 110 lb. Cover
Capacity	10 - 200 sheets
Stacking Capacity	7 sets (100 sheets per set)
Cover Interposer	2 x 200-sheet trays
Inline Trimming	1-side/3-side/none
Transit Pass Unit	For perfect bind*

Type GB5000

*Transit Pass Unit Type GB5000 and Cover Interposer Type GB5000 required.

BK5010e Production Level Booklet Maker*

Maximum Booklet	30 sheets (120 pages)
Finishing Speed	Maintains 72 ppm rated engine speed
Media Size	Width: 8.1" - 12.6" Length: 10.8" - 18"
Media Weight	16 lb. Bond - 172 lb. Index**
Optional Accessories	TR5010e for face trimming BF5010e for square book folding CF5010 Cover Feeder

*Manufactured by Plockmatic International AB.

**Booklet maker supports up to 172 lb. Index in off-line mode only.

GBC StreamPunch III Punch Unit

Punch Type	Customer replaceable die sets
Media Size	8.5" x 11" LEF (punch on 11" side only)
Die Types	3-hole, 11-hole Velo Bind, 19-hole Comb Bind, 21- and 32-hole Wirebind, 32-hole Procluck, 44-hole Color Coil
Custom Dies	Available on request

RB5000 Ring Bind Unit

Media Size	8.5" x 11"
Media Weight	17 lb. Bond - 80 lb. Cover
Number of Sheets	2 - 100 sheets
Stacking Capacity	Binding Mode: 11 sets (100 pages per set) Punching Mode: 50 sets
Ring Consumables	Ring bind element for 50 sheets Ring bind element for 100 sheets

SK5000 High-Capacity Stacker*

Media Size	5.5" x 8.5" up to 13" x 19.2"
Media Weight	16 lb. Bond - 110 lb. Cover
Stacking Capacity	5,000 sheets
Roll-Away Cart	One included for unloading stacks

*Up to two units can be connected. Requires a Cooling Buffer Unit option.

Document Server Specifications*

HDD Capacity	410 GB
Max. Stored Documents	3,000**
Max. Pages per Document	Copy: 2,000** Print: 5,000** Scan: 2,000**
Max. Page Storage	12,000**

*The Document Server is only on the C900s.

**Maximum capacity may vary due to image coverage.

Scanner Specifications (GW Controller)

Scanning Resolutions	100/150/200/300/400/600 dpi
Scan Area	Up to 11.7" x 17"
Scan Speed	75/75 spm (BW/FC)
File Formats	TIFF and PDF (multi/single), JPEG, High Compression PDF
Mixed Size Mode	Supported
Scan-to-Destination	Scan-to-Email, Scan-to-Folder, Scan-to-URL, Scan-to-FTP, Scan-to-NCP (Novell), TWIN Scanning
Scan-to-Email Authentication	SMTP, POP before SMTP
Resolution	200 - 600 dpi
Max. E-Mail Registries	2,000 e-mail addresses, 500 groups
LDAP	Supports up to five LDAP servers
File Type	Single/Multi-Page PDF or TIFF, Single/Multi High Compression PDF

Copier Specifications

Scanning Element	3-line CCD Array
System Memory	2 GB
System HDD	640 GB
Document Feeder	Standard 100-Sheet ARDF
Copy Resolution	1200 x 1200 dpi
Image Adjustment	Automatic or manual
Quantity Indicator	Up to 9,999
Original Type	Book/sheet/object
Original Size	5.5" x 8.5" - 11" x 17"
First-Copy Out Time	Less than 13.5 seconds
Speed (Memory)	90/90 cpm (BW/FC)
Speed (ARDF)	80/60 cpm (BW/FC)
Magnification	7 reductions and 5 enlargements
Zoom	25% - 400% in 1% increments
Copier Features	Auto Magnification, Directional Magnification, Full Image Copy, Interrupt Copy, Original Type Setting, Duplex (1:1, 2:2, Book to 2-Sided, Front and Back to 2-Sided), Book/ Series Combine, Margin Adjustment, Erase 3-Edge, Cover/Slip-Sheet, Chaptering, Media Designate, Image Rotation, Electronic Sort, 4-Position Staple Punch, Stamp, Image Adjustment, User Code, Interrupt Copy, Copy Counter, Counterfeit Prevention

Additional Accessories

Tab Sheet Unit, Tandem Tray Converter, Optional Counter Interface, Cooling Fan for SR5000, Cooling Buffer Unit for SK5000

Consumables

CMYK Toner	72,000 page yield per bottle Based on 5% coverage
-------------------	--

Standard Uptime Components

TCRU Kit	Trained Customer Replaceable Parts Maintenance components replaced by customer
@Remote	Remote diagnostics Remote troubleshooting

For maximum performance and yield, we recommend using genuine Ricoh parts and supplies.

RICOH

www.ricoh-usa.com

Bringing Ricoh Value to Your Organization

Ricoh technology offers a diverse portfolio of solutions to help your organization stay competitive and move ahead. Let Ricoh show you how to empower your business to improve critical processes, keep information secure, ensure compliance and promote environmental sustainability while reducing the total cost of ownership.

Ricoh Americas Corporation, Five Dedrick Place, West Caldwell, NJ 07006
RicoH® and the Ricoh Logo are registered trademarks of Ricoh Company, Ltd. All other trademarks are the property of their respective owners. Print speed may be affected by network, application or PC performance. Specifications and external appearances are subject to change without notice. Products are shown with optional features.

R3174

