



CLX-9252NA and CLX-9352NA
MultiXpress Color Multifunction Printers

High-output solutions for
your high-output workgroup.



Enhance your office data security at no extra cost.

Your business is no one else's business. Samsung helps you keep it that way with a number of built-in security features. Data encryption, secure log in, protected networks, and more are all standard.

Control Data Security

Data security is a major concern of businesses today. The Samsung Security Framework is standard on the MultiXpress CLX-9252NA and CLX-9352NA. It increases network protection and helps prevent unauthorized access to confidential information.



XOA (Open Architecture Platform) API



Connect the MultiXpress CLX-9252NA and CLX-9352NA MFPs to a company's applications through XOA. Based on open standards, XOA enables print solution vendors to create embedded applications that enhance the use of the device's capabilities to help improve business processes. XOA provides:

- Intelligent integration across a wide range of services
- Easier integration and less downtime during installation
- A flexible solution for continuous productivity
- Optimized extensibility and customization

Increase Efficiency and Productivity

Samsung offers solutions to help increase business efficiency, such as device management, secure printing, document workflow, barcode document management, and mobile printing. Samsung's extensive suite of solutions is designed to help meet modern office requirements.

Authenticated User



- Authentication
- Authorization
- Accounting

Protected Network



- Secure Socket Layer (SSL)/ Transport Layer Security (TLS)
- Simple Network Management Protocol (SNMP) v3
- Internet Protocol Security IPSec (Internet Protocol [IP] v4, IPv6)
- 802.1x with Extensible Authentication Protocol [EAP]
- Protocol/port management
- MAC/IP filtering

Secure Document



- Secure print
- Secure scan
- Secure fax
- Document tagging (watermark, stamps)

Secure Data



- Encryption
- Hard disk drive image overwrite
- Digital signature

Secure Management



- System logs
- System back up
- Email notification

SyncThru™ Device Management Solution



SyncThru™ Admin remotely discovers, manages, diagnoses, and reports all devices within the network to achieve increased efficiency and productivity throughout the organization.

Easy Mobile Print App



Free Samsung Mobile Print App lets you print, scan, and fax to/from mobile devices. Just connect to your MFP wirelessly and print, scan, or fax, without the need to install any drivers.

SmarThru™ Workflow Document Distribution Solution



SmarThru™ Workflow streamlines document workflows, from capturing paper documents, as well as electronic documents, to distributing them to predefined destinations.

Barcode™ Document Management Solution



Barcode™ is used to manage assets and stock items, track items through distribution channels, or simply improve the management of documents within the organization.

Produce polished documents of various formats and media types.

The exciting thing about business is you never know what the day will hold. It might be a last-minute presentation. It might be an internal international report that determines your entire year's budget. No matter what document output requirements you and your team face each business day, the versatile Samsung CLX-9252NA and CLX-9352NA color MFPs are there for you.

Configured to Grow with a Business

The MultiXpress CLX-9252NA and CLX-9352NA are designed to expand with a growing business. The MFPs can be configured based on the needs of the business with a wide range of functions, including:

- Working Table
- 1,250-sheet Standard Finisher
- 3,250-sheet Booklet Finisher
- Stand
- Dual Cassette Feeder
- High Capacity Feeder

Extensive Paper Handling and Finishing Capabilities

Workgroup members can finish various types of documents with the optional 1,250/3,250 finisher (hole punch and booklet), stapling and folding features. Users can select from the optional dual cassette feeder (DCF) and high capacity feeder (HCF).

Wide Media Acceptance, Including Banners

The MultiXpress CLX-9252NA and CLX-9352NA MFPs can accept a wide array of media types. The A3-capable MFPs accept the widest copy paper weight in the class. A multipurpose tray supports envelopes of various widths, heavy stock paper and other special media. Additionally, the MFPs can support banners up to 47.2" x 12.5".

Samsung CLX-9252NA/CLX-9352NA MultiXpress Color Multifunction Printers







Easy operation at your fingertips.

When you're in a hurry, the last thing you want to do is stand there trying to figure out how to work your MFP. Samsung's advanced technology is intuitive. Every advancement we make is for a single purpose: to make your workday easier.

Samsung MPS, Mobile, Security, and Productivity Solutions

Samsung offers intelligent in-house and partner solutions that increase office productivity.

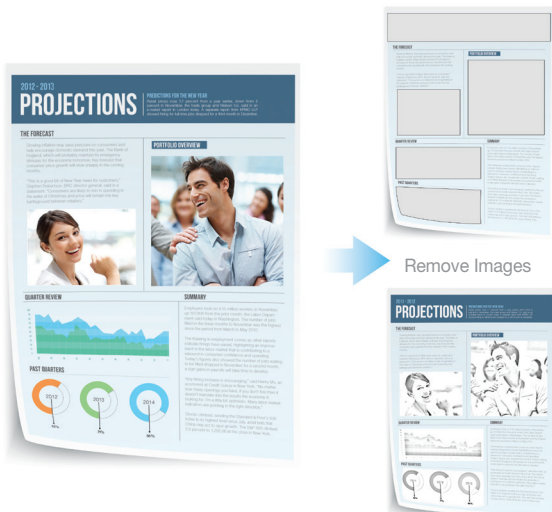
Document Management/Workflow	Managed Print Services	Job Accounting/Pull Printing	Device Management
<ul style="list-style-type: none"> • DPD - GoldFax[^] • Drive[^] • Intellinetics[^] • MaxxVault^{^**} • Perceptive^{^**} • Prism[^] • SmarThru 3 (Workflow)[*] 	<ul style="list-style-type: none"> • Compass • GreatAmerica Leasing • LMI • MWai[^] • PrintFleet 	<ul style="list-style-type: none"> • Bits[^] • EFI • Equitrac[^] • Genius Bytes[^] • ITC • Jetmobile • OCM[^] • PaperCut[^] • Pharos[^] • SafeCom[^] • Vendapin 	<ul style="list-style-type: none"> • SyncThru[*] (Web Admin) • SyncThru 6[*] (Web Services) 

* Samsung in-house solutions. ** Available mid 2013. ^ XOA Solution.

Simplified Savings with the Touch of a Button

Businesses can lower operating expenses with greater ease using Eco Mode, an energy-saving feature that helps companies reduce paper and power costs. By simply pressing the Eco button on the MFP, users can print more onto every page, with options for 2-up, 4-up, and duplex printing.

Users can select the option to automatically skip blank pages, which helps save on toner, further reducing supply expenses.



Conversion bitmap to sketch

Easy Eco Driver provides users a preview of a document before printing, which helps reduce wasted printouts. While previewing the document, users can modify its format by removing text and images. The user can also adjust the layout (for example, from 1-up to 2-up printing) without changing the original document layout.

LCD Control Panel: One of the Largest in its MFP Class

The color LCD control panel on the MultiXpress CLX-9252NA and CLX-9352NA MFPs is 8.9" and considered one of the largest control panels in its printer class. The control panel tilts for optimal viewing of current job status, following operational prompts and set-up menus. Also, LED indicators, such as low paper alerts or a ready-for-use indicator, help users more quickly determine the device status.



Samsung Mobile Print solution earned the Summer 2012 "Pick" Award as "Outstanding Mobile Print App" from Buyers Lab, Inc.



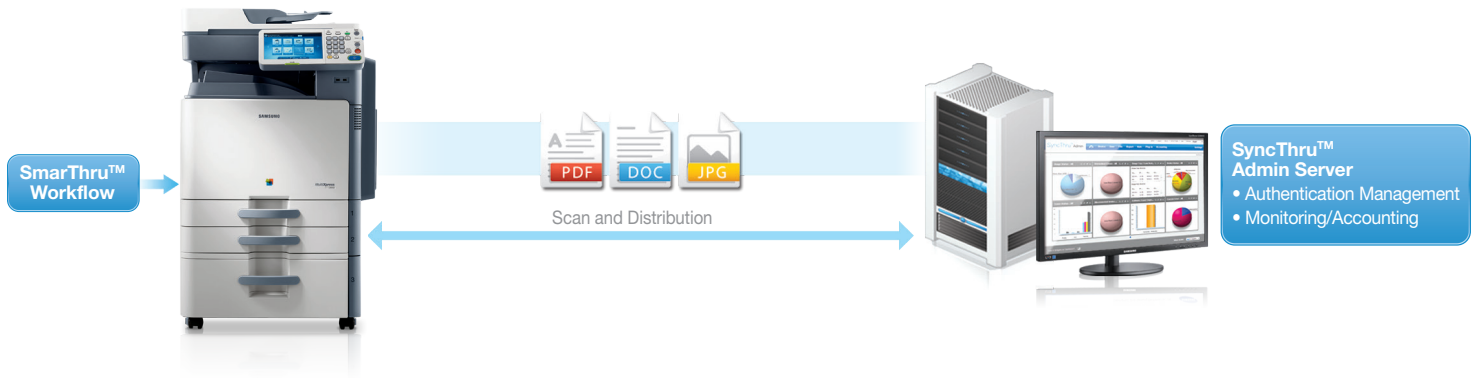
Samsung Eco-Driver earned the 2012 "Outstanding Achievement" Award from Buyers Lab, Inc.

Expand functionality easily and affordably.

You can accomplish more with the Samsung CLX-9252NA and CLX-9352NA color MFPs and their expanded functionality options. The CLX-9252NA and CLX-9352NA MFPs can be tailored to your unique business requirements. You can add security, usage monitoring, and more.

Manage Workflows with Smart Solutions

Use Samsung solutions with the MultiXpress CLX-9252NA and CLX-9352NA to create an MFP that helps efficiently manage business workflows.

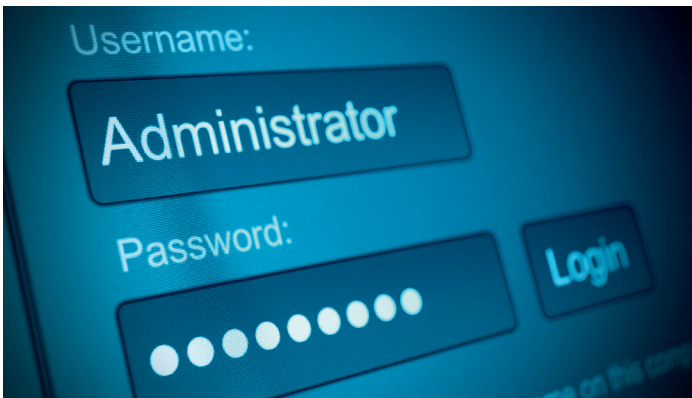


Single Sign On (SSO)

A user logs in once and gains access to all Samsung solutions.

Secure Document Workflow

Only authenticated users can access the pre-defined scan workflow by SmarThru™ Workflow with the icon-based intuitive user interface.

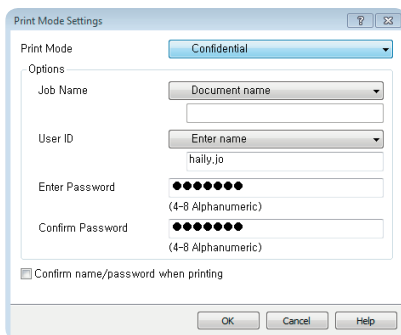


Secure Printing

Documents are not released without user authentication.

Usage Monitoring by User and Device

Information technology (IT) administrators can manage and monitor users' print, copy, and scan jobs by using the SyncThru™ Admin interface.



True color at the speed of light.

In today's fast-paced environment, you expect your MFP to achieve maximum uptime. The new Samsung MultiXpress CLX-9252NA and CLX-9352NA provide high-output workgroups optimal speed for printing, copying, scanning, and faxing without sacrificing quality. Samsung's Rendering Engine for Clean Page (ReCP) technology produces professional-grade printouts, and the polymerized toner uses smaller and more uniform particles to provide vivid and glossy images, while requiring lower fusing temperatures.

Improve Performance with Twice the Power

The MultiXpress CLX-9252NA and CLX-9352NA enhance office productivity with faster printing and scanning capabilities, powered by a fully integrated Samsung 1GHz dual-core processor. Large print and copy jobs are easier to manage, and scanning throughput is increased. The dual-core processor performs printing tasks faster than a conventional processor, enabling employees to focus on core work activities.



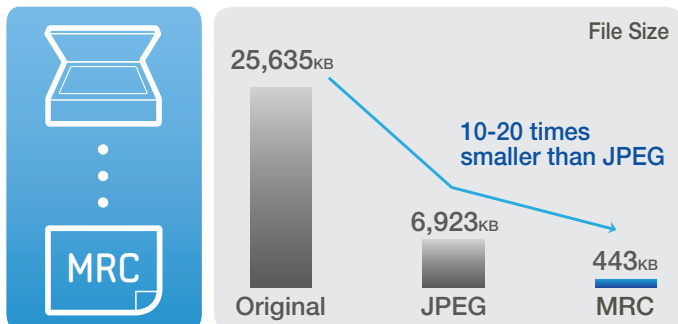
Enjoy Quality Printouts

Samsung's unique ReCP (Rendering Engine for Clean Page) technology and up to 600 x 600 x 4 bit dpi improve the overall quality and vibrancy of your color printing, ensuring every printout looks perfect. ReCP automatically sharpens the focus of both graphics and text, while solid objects are overlapped to eliminate white gaps.



Send Scanned Files Quicker with High Compression

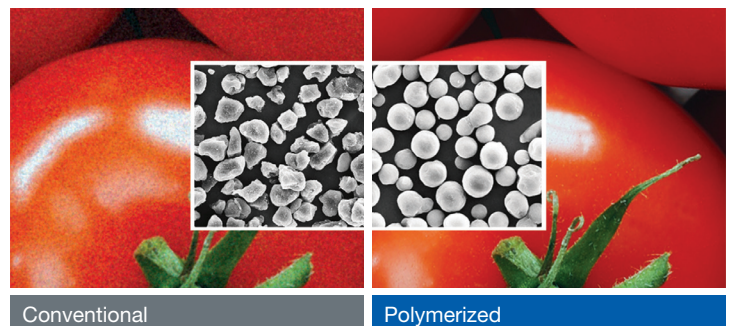
The Samsung Mixed Raster Content (MRC) technology compresses scanned files with little reduction in quality. The compressed files save MFP storage space, helping users create and send scanned documents with greater ease and speed.



MRC: extracted text and image for PDF format scan. Evaluation from internal test lab.

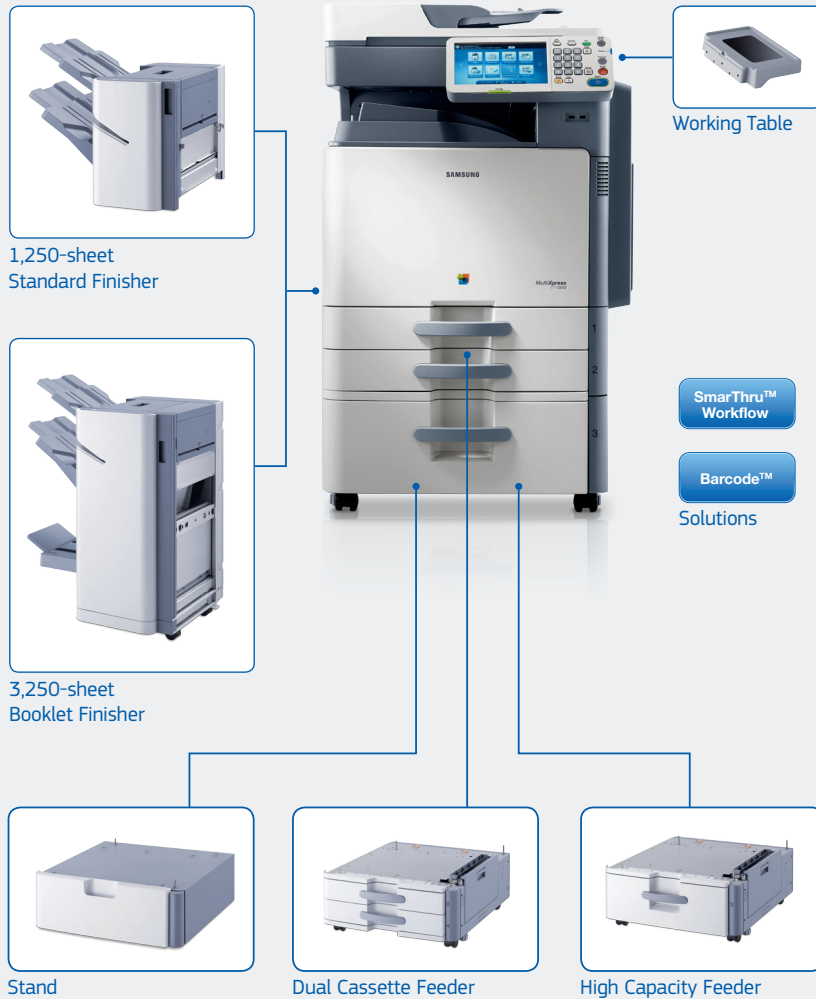
Prevent Document Fading with Polymerized Toner

Samsung polymerized toner produces smaller and more uniform particles than conventional toners. Printouts have crisper lines and intense colors, and pages curl less often. Additionally, the high wax content improves the image gloss and durability, which helps prevent the document from fading.



Flexible configuration, genuine Samsung consumables.

Samsung CLX-9252NA/CLX-9352NA color MFPs give you the options you need for maximum productivity.



Product Configurations

Basic Configuration

Main Unit + Stand
 Input Capacity: 1,140 Sheets
 Output Capacity: 650 Sheets



Advanced Configuration

Main Unit + 1,250 Sheet Standard Finisher + Dual Cassette Feeder
 Input Capacity: 2,180 Sheets
 Output Capacity: 1,400 Sheets



Full-Featured Configuration

Main Unit + 3,250 Sheet Booklet Finisher + High Capacity Feeder
 Input Capacity: 3,140 Sheets
 Output Capacity: 3,400 Sheets



Protect your investment with genuine Samsung consumables.

Only genuine Samsung polymerized toners are engineered along with the CLX-9252NA and CLX-9352NA to maximize performance, image quality, and control. Their advanced electronics communicate with the MFPs to precisely calibrate color and text output through ReCP technology, as well as to provide low-toner and other important alerts.



Consumables

Model	CLX-9252NA/CLX-9352NA
Toner Part Number	Toner Description
CLT-K606S	25,000 Yield - Standard Black Toner
CLT-C607S	15,000 Yield - Standard Cyan Toner
CLT-C606S*	20,000 Yield - High Yield Cyan Toner
CLT-M607S	15,000 Yield - Standard Magenta Toner
CLT-M606S*	20,000 Yield - High Yield Magenta Toner
CLT-Y607S	15,000 Yield - Standard Yellow Toner
CLT-Y606S*	20,000 Yield - High Yield Yellow Toner
CLT-R607K	75,000 Yield - Black Imaging Unit
CLT-R607C	75,000 Yield - Cyan Imaging Unit
CLT-R607M	75,000 Yield - Magenta Imaging Unit
CLT-R607Y	75,000 Yield - Yellow Imaging Unit
CLT-W606	75,000 Yield - Waste Toner Container
CLX-PMK10C	Filter (Dust, Ozone), Cleaning and Transfer Set
CLX-PMK11C	Tray Roller Kit
CLX-PMK13C	MP Roller Kit

*For CLX-9352NA Only

Options

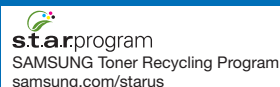
Model	CLX-9252NA/CLX-9352NA
Accessory Part Number	Part Description
CLX-BRG200	Bridge Unit for Finisher (required for CLX-FIN40L, CLX-FIN40S)
CLX-DHK11C	Cassette Dehumidifying Heater
CLX-DSK10T	Stand
CLX-FAX160	Fax Kit
CLX-FAX260	Multiline Fax Kit
CLX-FIN40L	3,250-Sheet Booklet Finisher (requires CLX-BRG200)
CLX-FIN40S	1,250-Sheet Standard Finisher (requires CLX-BRG200)
CLX-HCF102	High Capacity Feeder (2,000 Sheets)
CLX-HPU000	2/3 Hole Punch Kit
CLX-KIT10F	Foreign Device Interface Kit
CLX-PPF000	Dual Cassette Feeder
SCX-STP000	Finishing Staples Cartridge 15K Yield
CLX-WKT000	Working Table

Specifications	CLX-9252NA	CLX-9352NA
General		
Speed (Mono/Color)	25 / 25 ppm	35 / 35 ppm
Functions	Standard: Print, Copy, Scan, Network, Duplex / Optional: Fax	Standard: Print, Copy, Scan, Network, Duplex / Optional: Fax
Processor/Memory	1GHz (Dual Core) / 1.5 GB	1GHz (Dual Core) / 1.5 GB
Display	8.9" Color Touch-Panel LCD, 1024 x 600 (WSVGA)	8.9" Color Touch-Panel LCD, 1024 x 600 (WSVGA)
Interface	High-Speed USB 2.0 Host (3-port), Hi-Speed USB 2.0 Ethernet 10/100/1000 Base TX	High-Speed USB 2.0 Host (3-port), Hi-Speed USB 2.0 Ethernet 10/100/1000 Base TX
Warm-up Time	From Power On: Less Than 39 sec. / From Sleep: Less Than 28 sec.	From Power On: Less Than 39 sec. / From Sleep: Less Than 28 sec.
Noise Level (Simplex/Duplex)	Copying: 54dBA/56dBA, Printing: 51dBA/53dBA, Ready: 37dBA, Sleep: 27dBA	Copying: 54dBA/56dBA, Printing: 51dBA/53dBA, Ready: 37dBA, Sleep: 27dBA
Storage	320 GB (Document Box Space: 154 GB)	320 GB (Document Box Space: 154 GB)
Max. Monthly Duty Cycle	120,000 pages	150,000 pages
Dimension (W x D x H)	26.7" x 30.0" x 33.6" (including DADF)	26.7" x 30.0" x 33.6" (including DADF)
Weight	241 lbs. (Including DADF, Waste Toner Box)	241 lbs. (Including DADF, Waste Toner Box)
Network Protocols	IP Management (DHCP, DHCPv6, BOOTP, AutoIP, SetIP, Static), - Discovery Protocol (SLP, UPnP, Bonjour, DNS, WINS), - Printing Protocol (TCP/IP (9100), TCP/IP (9100)v6, LPR, LPR6, IPP, WSD), - Management Protocol (SNMPv1.2, SNMPv1.2 (IPv6), SNMP3, SNMPv3 (IPv6), HTTP, HTTPS, LDAP, LDAPs, SMTP), - Scan Protocol (SMTP, SMTPs, FTP, SMB, Twain for Network, WebDav), - Security Protocol (SMB, Kerberos, LDAP, IPsec)	IP Management (DHCP, DHCPv6, BOOTP, AutoIP, SetIP, Static), - Discovery Protocol (SLP, UPnP, Bonjour, DNS, WINS), - Printing Protocol (TCP/IP (9100), TCP/IP (9100)v6, LPR, LPR6, IPP, WSD), - Management Protocol (SNMPv1.2, SNMPv1.2 (IPv6), SNMP3, SNMPv3 (IPv6), HTTP, HTTPS, LDAP, LDAPs, SMTP), - Scan Protocol (SMTP, SMTPs, FTP, SMB, Twain for Network, WebDav), - Security Protocol (SMB, Kerberos, LDAP, IPsec)
Network Security	SSL/TLS, IP sec, SNMPv3, IPv6, Protocol & Port Management, IP/MAC filtering	SSL/TLS, IP sec, SNMPv3, IPv6, Protocol & Port Management, IP/MAC filtering
OS Compatibility	[Windows] - Windows XP (32/64bit)/2003(32/64bit)/Vista(32/64bit)/2008/Win7/2008 R2(64 only) [Mac] - Mac OS 10.4 and Later [Linux] - RedHat Enterprise Linux WS 4, 5 (32/64bit) - Fedora Core 2-10 (32/64bit) - SUSE Linux 9.1 (32bit) OpenSUSE 9.2, 9.3, 10.0, 10.1, 10.2 10.3, 11.0, 11.1 (32/64bit) - Mandrake 10.0, 10.1 (32/64bit) - Mandriva 2005, 2006, 2007, 2008, 2009 (32/64bit) - Ubuntu 6.06, 6.10, 7.04, 7.10, 8.04, 8.10 (32/64bit) - SUSE Linux Enterprise Desktop 9, 10 (32/64bit) - Debian 3.1, 4.0, 5.0 (32/64bit)	[Windows] - Windows XP (32/64bit)/2003(32/64bit)/Vista(32/64bit)/2008/Win7/2008 R2(64 only) [Mac] - Mac OS 10.4 and Later [Linux] - RedHat Enterprise Linux WS 4, 5 (32/64bit) - Fedora Core 2-10 (32/64bit) - SUSE Linux 9.1 (32bit) OpenSUSE 9.2, 9.3, 10.0, 10.1, 10.2 10.3, 11.0, 11.1 (32/64bit) - Mandrake 10.0, 10.1 (32/64bit) - Mandriva 2005, 2006, 2007, 2008, 2009 (32/64bit) - Ubuntu 6.06, 6.10, 7.04, 7.10, 8.04, 8.10 (32/64bit) - SUSE Linux Enterprise Desktop 9, 10 (32/64bit) - Debian 3.1, 4.0, 5.0 (32/64bit)
Power Consumption	Max 1.1 kW (Ready: <100 W, Low power: <20 W, Sleep: <1.5 W)	Max 1.1 kW (Ready: <100 W, Low power: <20 W, Sleep: <1.5 W)
Certification	WHQL Compliance, Cerner	WHQL Compliance, Cerner
Print		
First Print Out Time	Less than 12.5 sec (Mono) / Less than 13.5 sec (Color)	Less than 9.5 sec (Mono) / Less than 10.5 sec (Color)
Resolution	Default 600 x 600 x 2, bit Up to 600 x 600 x 4 bit	Default 600 x 600 x 2, bit Up to 600 x 600 x 4 bit
Emulation	PCL5Ce, PCL6C, PostScript Level3, PDF 1.7	PCL5Ce, PCL6C, PostScript Level3, PDF 1.7
Fonts	PCL: Scalable93, OCR-A, OCR-B / Postscript: Scalable136	PCL: Scalable93, OCR-A, OCR-B / Postscript: Scalable136
Duplex (Mono/Color) - Simple to Duplex	Up to 24.4 / 24.4 ppm in A4 / Letter Up to 12 / 12 ppm in A3 / 11X17	Up to 34.2 / 34.2 ppm in A4 / Letter Up to 17 / 17 ppm in A3 / 11X17
Network Operating System	[Windows] - Microsoft™ XP (32/64 bits) / 2003 (32/64 bits) / Vista (32/64 bits) / Win7 [Mac] - Mac OS 10.4 and Later [Linux] - RedHat Enterprise Linux WS 4, 5, 6 (32/64 bit), - Fedora 5, 6, 7, 8, 9, 10, 11, 12, 13, 14, 15 (32/64 bit) - openSUSE 10.2, 10.3, 11.0, 11.1, 11.2, 11.3, 11.4 (32/64 bit), - Mandriva 2007, 2008, 2009, 2009.1, 2010 (32/64 bit) - Ubuntu 6.06, 6.10, 7.04, 7.10, 8.04, 8.10, 9.04, 9.10, 10.04, 10.10, 11.04 (32/64 bit), - SUSE Linux Enterprise Desktop 10, 11 (32/64 bit) - Debian 4.0, 5.0, 6.0 (32/64 bit)	[Windows] - Microsoft™ XP (32/64 bits) / 2003 (32/64 bits) / Vista (32/64 bits) / Win7 [Mac] - Mac OS 10.4 and Later [Linux] - RedHat Enterprise Linux WS 4, 5, 6 (32/64 bit), - Fedora 5, 6, 7, 8, 9, 10, 11, 12, 13, 14, 15 (32/64 bit) - openSUSE 10.2, 10.3, 11.0, 11.1, 11.2, 11.3, 11.4 (32/64 bit), - Mandriva 2007, 2008, 2009, 2009.1, 2010 (32/64 bit) - Ubuntu 6.06, 6.10, 7.04, 7.10, 8.04, 8.10, 9.04, 9.10, 10.04, 10.10, 11.04 (32/64 bit), - SUSE Linux Enterprise Desktop 10, 11 (32/64 bit) - Debian 4.0, 5.0, 6.0 (32/64 bit)
Utilities	SyncThru Web Service, Anyweb Print, Easy Printer Manager, Easy Document Creator, Easy Deployment Manager, Mobile Print (Android, iOS, Win Mobile)	SyncThru Web Service, Anyweb Print, Easy Printer Manager, Easy Document Creator, Easy Deployment Manager, Mobile Print (Android, iOS, Win Mobile)
Solutions	SyncThru Admin 6, SmarThru Workflow 3, SmarThru	SyncThru Admin 6, SmarThru Workflow 3, SmarThru
Open Platform	eXtended Open Architecture (XOA)	eXtended Open Architecture (XOA)
Copy		
Speed (Mono/Color)	25 cpm in A4 / Letter	35 cpm in A4 / Letter
First Copy Out Time	9.5 seconds (Mono) / 10.5 seconds (Color)	7.5 seconds (Mono) / 8.5 seconds (Color)
Resolution/Zoom Rate/ Multi Copy	600 x 600 dpi / 25% - 400% / 9,999 Pages	600 x 600 dpi / 25% - 400% / 9,999 Pages
Copy Features	ID Copy, Clone Copy, N-UP Copy, Poster Copy	ID Copy, Clone Copy, N-UP Copy, Poster Copy
Other Copier Features	Original Type: Text, Text/Photo, Magazine, Photo, Copied Original, Map, Light Original Color Setting: Auto Color, Full Color, B&W Image Modify: Book Center Erase, Watermark Copy, Automatic Background Suppression, Time & Date Stamp, ID Stamp	Original Type: Text, Text/Photo, Magazine, Photo, Copied Original, Map, Light Original Color Setting: Auto Color, Full Color, B&W Image Modify: Book Center Erase, Watermark Copy, Automatic Background Suppression, Time & Date Stamp, ID Stamp
Fax (Optional)		
Modem Speed / Compatibility	33.6 Kbps / ITU-T G3, Super G3	33.6 Kbps / ITU-T G3, Super G3
Resolution	Up to 600 x 600 dpi (Mono)	Up to 600 x 600 dpi (Mono)
Memory	HDD Back-up	HDD Back-up
Auto Dialing	500 Locations Speed Dial, 500 Group Dial	500 Locations Speed Dial, 500 Group Dial
Fax Features	Speed Dial, Group, Dial, On-hook Dial, Auto Redial, Caller ID, Secure Reception, Fax Forwarding, etc.	Speed Dial, Group, Dial, On-hook Dial, Auto Redial, Caller ID, Secure Reception, Fax Forwarding, etc.
Scan		
Compatibility / Method	Network TWAIN / Color CDDM-MMT	Network TWAIN / Color CDDM-MMT
Scan Document Size	Max. 11.7" x 17.0"	Max. 11.7" x 17.0"
Resolution (Optical/Enhanced)	Up to 600 x 600 dpi (Optical) / Up to 4,800 x 4,800 dpi (Enhanced)	Up to 600 x 600 dpi (Optical) / Up to 4,800 x 4,800 dpi (Enhanced)
Paper Handling		
Input Capacity & Types	Standard Cassette: 520 sheets (Cassette) x 2 / Multipurpose tray: 100 sheets Other Options: (Dual Cassette Tray) 1,040 sheets, (High Capacity Feeder) 2,000 sheets, (Maximum) 3,140 sheets Cassette: Plain / Thin / Bond / Punched / Pre-Printed / Recycled / Label / CardStock / Letterhead / Thick / Cotton / Colored / Archive / Glossy Multipurpose tray: Plain / Thick / Heavy Weight / Extra Heavy Weight 1 / Extra Heavy Weight 2 / Thin / Cotton / Color / Preprinted / Recycled / Bond / Archive / Letterhead / Punched / CardStock / Labels / Envelope / Glossy Other Options: (Dual Cassette Tray) Plain / Thick / Heavy Weight / Extra Heavy Weight 1 / Thin / Cotton / Color / Pre-printed / Recycled / Bond / Archive / Letterhead / CardStock / Label (High Capacity Feeder) Plain / Thick / Heavy Weight / Thin / Cotton / Color / Pre-printed / Recycled / Bond / CardStock	Standard Cassette: 520 sheets (Cassette) x 2 / Multipurpose tray: 100 sheets Other Options: (Dual Cassette Tray) 1,040 sheets, (High Capacity Feeder) 2,000 sheets, (Maximum) 3,140 sheets Cassette: Plain / Thin / Bond / Punched / Pre-Printed / Recycled / Label / CardStock / Letterhead / Thick / Cotton / Colored / Archive / Glossy Multipurpose tray: Plain / Thick / Heavy Weight / Extra Heavy Weight 1 / Extra Heavy Weight 2 / Thin / Cotton / Color / Preprinted / Recycled / Bond / Archive / Letterhead / Punched / CardStock / Labels / Envelope / Glossy Other Options: (Dual Cassette Tray) Plain / Thick / Heavy Weight / Extra Heavy Weight 1 / Thin / Cotton / Color / Pre-printed / Recycled / Bond / Archive / Letterhead / CardStock / Label (High Capacity Feeder) Plain / Thick / Heavy Weight / Thin / Cotton / Color / Pre-printed / Recycled / Bond / CardStock
Media Types	Cassette: Letter / Legal / Oficio / Folio / A3 / A4 / JIS B5 / ISO B5 / Executive / A5 / Statement / Custom Multipurpose tray: 98 x 148 mm - 320 x 457 mm (3.87 x 5.8" - 12.6 x 18") Banner 320 x 1200 mm (12.5"-47.2") Other Options: (Dual Cassette Tray) Letter, Legal, Oficio, Folio, Statement, Ledger, A3, A4, JIS B5, ISO B5, Executive, A5, Custom (High Capacity Feeder) A4, Letter	Cassette: Letter / Legal / Oficio / Folio / A3 / A4 / JIS B5 / ISO B5 / Executive / A5 / Statement / Custom Multipurpose tray: 98 x 148 mm - 320 x 457 mm (3.87 x 5.8" - 12.6 x 18") Banner 320 x 1200 mm (12.5"-47.2") Other Options: (Dual Cassette Tray) Letter, Legal, Oficio, Folio, Statement, Ledger, A3, A4, JIS B5, ISO B5, Executive, A5, Custom (High Capacity Feeder) A4, Letter
Media Size	Cassette: 13-48 lbs. / Multipurpose tray: (Simplex) .13-.56 lbs., (Duplex) .13-.39 lbs. Other Options: (Dual Cassette Tray) .13-.48 lbs., (High Capacity Feeder) .13-.48 lbs.	Cassette: 13-48 lbs. / Multipurpose tray: (Simplex) .13-.56 lbs., (Duplex) .13-.39 lbs. Other Options: (Dual Cassette Tray) .13-.48 lbs., (High Capacity Feeder) .13-.48 lbs.
Media Weights	Standard: 500 (Center Output Tray) / Max: 3,250 (Booklet Finisher, option)	Standard: 500 (Center Output Tray) / Max: 3,250 (Booklet Finisher, option)
Output Capacity Types	DADF	DADF
ADF Type	100 Sheets	100 Sheets
ADF Capacity	A3, A4, A4 SEF, A5, A5 SEF, B4, B5, B5 SEF	A3, A4, A4 SEF, A5, A5 SEF, B4, B5, B5 SEF
ADF Document Size	Simplex: .09-.28 lbs. / Duplex: 50-128 gsm	Simplex: .09-.28 lbs. / Duplex: 50-128 gsm
ADF Document Weight		

samsung.com/printer

Follow us on Twitter@SamsungBizUSA

Product Support: 1-866-SAM4BIZ | 1-800-SAMSUNG



©2013 Samsung Electronics America, Inc. Samsung is a registered mark of Samsung Electronics Corp., Ltd. Specifications and designs are subject to change without notice. Non-metric weights and measurements are approximate. All other brand, product, service names and logos are trademarks and/or registered trademarks of their respective manufacturers and companies. Simulated screen images. See samsung.com for detailed information. Printed in USA on 50% recycled (30% post-consumer waste) paper using soy inks. PNT-CLX9252NACLX9352NA-JAN13T

