

SAMSUNG

Samsung **MultiXpress** X4300LX | X4250LX series

THE NEW WAY OF PRINTING, INNOVATED FOR
SMARTER BUSINESS



Go beyond your work capabilities with print innovation.

To keep up with the fast-paced business world, workplaces are embracing bring your own device (BYOD) policies. This trend is leading to more efficient, more seamless operations and highly productive employees using smartphones, tablets and cloud computing in the office.

Businesses now want to extend that same smart technology to all devices. Printers are expected to have the same functionalities and interoperability as cutting-edge mobile devices, and businesses are seeking print solutions that can be easily managed while delivering powerful performance at reduced costs.

Samsung's new multifunction printers (MFPs), the MultiXpress X4300LX/X4250LX, provide smart usability that allows users to work faster and more efficiently using intuitive, easy-to-use controls. And with high-performance and resource-efficient features, these MFPs can meet the printing needs of work groups that depend on reliable, cost-competitive document handling solutions, while lowering total cost of ownership (TCO).

Work smarter using the latest in intelligent touch features.



Samsung User Interface Center
powered by Android™

Convenient Applications and Widgets

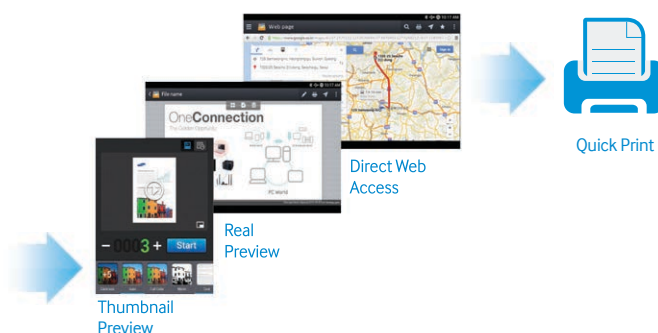
TOUCH

Touch to Print, Just Like on a Tablet

The MultiXpress X4300LX/X4250LX provide innovative usability through the Samsung SMART UI Center, the very first Android printing User Interface (UI). These user-friendly interfaces provide intuitiveness, usability and extensibility.

Enjoy Preloaded Applications and Widgets

Applications are preloaded, including Copy, Scan/Send, Box (Document Storage), Job Status, Counter, Settings, Build Job, Address Book and Help, which provide users with more convenient usability. In addition, there are custom widgets for creating instant, one-touch access to frequently used functions.

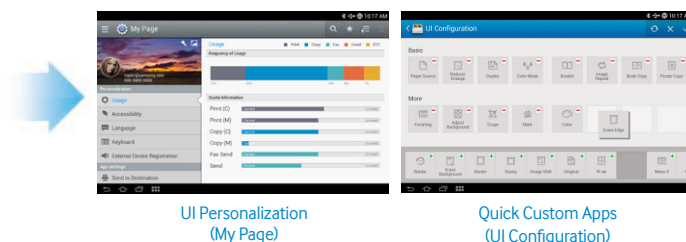


USE

Expand Use with Independent Functions and Extensibility

The Real Preview function is available in preloaded applications, such as Copy, Send and Box. Usability can be further extended with the built-in Web Print Browser, which allows you to quickly print content such as maps, pictures, e-mail and more without a PC.

Access even more useful features and solutions by downloading them through the Samsung Print App store.



UI Personalization (My Page)

Quick Custom Apps (UI Configuration)

MANAGE

Personalize the User Interface Through My Page

Enhance the UI by arranging and managing the environment per user with My Page. Simply customize the settings and Quick Menu for each user, and keep track of an individual's usage, control accessibility and more.

Create Custom Shortcuts and UIs in a Snap

Administrators can create custom shortcuts directly on the device. Instantly perform complex tasks with one click by customizing the interface configuration.

Print and scan at super-fast speeds without sacrificing quality.

Boost productivity with ultra-fast performance.

Work fast, wait less.

Scan at High Speed

The MultiXpress X4300LX/X4250LX printers are equipped with a Dual Scan Document Feeder (DSDF), enabling it to deliver high scanning speeds. These workhorse MFPs can scan up to 80 single-sided images per minute (ipm) and up to 120 double-sided ipm.

Faster Print Processing with Zero Fuss

The MultiXpress X4300LX/X4250LX print at speeds of up to 30 pages per minute (ppm). A 1 GHz dual-core CPU provides the power and capacity to accomplish print and copy jobs of any size or complexity.



Edge Enhancement



Color Trapping

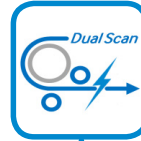


Composite Color Reduction



De-Screening

Ultra-Fast Dual Scan
Up to 120 ipm



Fast Print Speed
Up to 30 ppm

Dual Core Core
1 GHz Dual-Core CPU

Get Sharper-Quality Print Output

Samsung's unique Rendering Engine for Clean Page (ReCP) technology delivers professional-quality output with sharp text and clean images. The innovative technology automatically sharpens the focus of both graphics and text. And with a superior resolution of 1,200 x 1,200 effective dpi, your scans, printouts and company will always look professional.

Samsung MPS, Mobile, Security and Productivity Solutions.

Samsung's strategic partnerships allow us to offer simplified, seamless solutions that increase both security and office productivity.

SAMSUNG	INTEGRATED SOLUTION VENDOR		SAMSUNG SOLUTIONS
MPS / FLEET MANAGEMENT	Compass Sales Solutions FMAudit	MWA Intelligence PrintFleet	SyncThru Admin™
OUTPUT MANAGEMENT COST ACCOUNTING	Copitrak Drive▲ Equitrac▲	Jetmobile▲★★ PaperCut▲ Pharos Systems▲★	BUSINESS CORE™ PRINTING SOLUTIONS Usage Tracker▲ SecuThru™ Lite 2▲
DOCUMENT DISTRIBUTION CONTENT MANAGEMENT	EMC² Drive▲ GoldFax▲ InfoDynamics▲★★	Intellinetics LaserFiche▲★★ Notable Solutions, Inc.▲★ Omtool▲	Cloud Connector▲ Secure Login Manager▲ SmarThru™ Workflow Lite▲ SmarThru™ Workflow 3▲
MOBILE AND CLOUD	Drive▲	EFI	Samsung Mobile Print App PrinterOn

▲XOA Solution ★Limited **2015

Manage expenses through cost-efficient attributes.

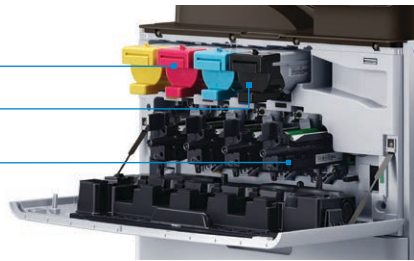
Lower your TCO with cost-efficient solutions and supplies.

Do more jobs, spend less.

Save Resources with Low TCO Printing

Businesses can handle heavy printing volumes while reducing costs with the MultiXpress X4300LX/X4250LX. Flexible options include a long-life drum supporting up to 100,000 pages and high-yield toner supporting up to 23,000* pages for black toner and 20,000* pages for cyan, yellow and magenta toner. They're designed to perform longer, resulting in a lower total cost of ownership.

- CLT-C808S: Cyan, Magenta, Yellow Toner (20,000 page yield)
- CLT-R808S: Black Toner (23,000 page yield)
- CLT-R808: Imaging Unit (100,000 page yield)

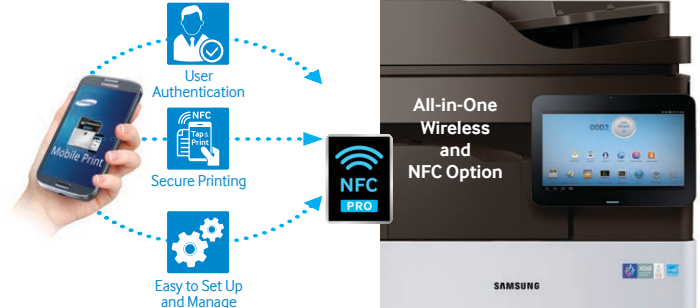


Create a Customized and Cost-Efficient Printing Environment

Samsung Business Core™ Printing Solutions (BCPS) is a software suite that runs on the XOA-Embedded platform and was created for small to medium-sized businesses to improve workplace efficiency. With custom workflows, secure print release and cloud printing, IT managers can easily implement the kind of print and document management solutions typically seen in the enterprise. These essential printing solutions include:



For further customization, numerous certified partner solutions are available through the Samsung XOA platform (XOA Embedded and XOA Web).



Manage your printing needs from a Samsung mobile device.

The Samsung Wireless and NFC printing option can be added to support various mobile printing solutions with just a tap, including:

User Authentication: Enable authorized users to tap and print to a Samsung MFP from their mobile devices.

Secure Printing: Authorize secure release of documents held in the printer's memory with BCPS and your mobile device.

Easy Wireless Setup: Configure wireless (IP) print setup from your mobile device without complicated activation steps.

Device Cloning: Clone standardized functions of an MFP.

Google Cloud Print: Allows user to print to their Samsung printers from any device at any time.



The Samsung Mobile Print App Makes the Smartphone Smarter

Increase your productivity with the Samsung Mobile Print App, available as a free download for Android and iOS platforms. Print, scan and fax directly to and from any Samsung printer or MFP on a local wireless network or via Wi-Fi Direct on select models. Print important emails, PDFs and Microsoft® Office documents, all without the need for an external server or PC.



PrinterOn is the world's leading enterprise-grade mobile printing platform, and is designed for any organization that wants to provide simple, secure mobile and cloud printing.



Samsung's Mobile Print solution earned the Summer 2012 Pick as "Outstanding Mobile Print App" from Buyers Lab, Inc.

*Declared cartridge yield in accordance with ISO/IEC 19752

Customize your MFP with a flexible print solution.

Select from a range of options to create a tailor-made MFP.

Configurable devices for optimized performance.

With unique configuration capabilities, the MultiXpress X4300LX/X4250LX printers can meet the needs of businesses of varying sizes, and in varying industries. Options include a wireless and NFC adaptor, Foreign Device Interface (FDI) Kit, various stand sizes and more.

CONFIGURATIONS AND OPTIONS

Job Separator
SL-JSP500S

Inner Finisher
SL-FIN501L

Staples
• Inner, Booklet
SCX-STP000

Staples
• Main for Booklet
SL-STP000

Booklet Finisher²
SL-FIN701B

Fax Kit
SL-FAX2501

FDI Kit
CLX-KIT10F

DSDF¹ (standard)
Dual Scan Automatic Document Feeder

- 100-sheet capacity
- Single-pass 2-sided document scanning
- Paper empty / width / length detection

Wireless/NFC
SL-NWE001X

- IEEE 802.11 b/g/n
- NFC (Active Type)

Multi Purpose Tray
SL-WKT101

Working Table
CLX-WKT001

Additional LAN Kit
SL-NWA001N

Punch Kit
• Inner - 2/3
SL-HPU501T

Punch Kit
• Booklet - 2/3
SL-HPU700T

Cabinet Stand
SL-DSK502T

or

DCF³
SL-PFP502D

¹Dual Scan Document Feeder ²Available Q1 2015 ³Dual Cassette Feeder

Specifications	X4300LX	X4250LX
Print		
Speed	Up to 30 ppm in A4/Letter (Up to 16 ppm in A3)	Up to 25 ppm in A4/Letter (Up to 14 ppm in A3)
First Print Out Time	Less than 9 / 11.5 sec	Less than 9.5 / 11.5 sec
Resolution/Enhanced	600 x 600 dpi / Up to 1200 x 1200 dpi with Reduced Speed	
Emulation	PCL5e / PCL6 / PostScript3 / PDF V1.7	
Duplex	Built-in	
Copy		
Speed	Up to 30 / 30 ipm in A4/Letter	Up to 25 / 25 ipm in A4/Letter
First Copy Out Time	Less than 5.9 / 7.6 sec	Less than 6.6 / 8.2 sec
Resolution (Platen / DADF)	Scan: 600 x 600 dpi / Printing: 600 x 600 dpi	
Reduce & Enlarge	25% ~ 400% (Platen Copy), 25% ~ 200% (Single pass duplexing ADF Copy)	
Multi Copy	1 ~ 9,999 pages	
Duplex Copy	Built-in	
Copy Features	ID Copy / N-up / Booklet / Image Repeat / Auto Fit / Book Copy / Poster Copy / Watermark / Image Overlay / Stamp / Covers / Job Build / Preview / Erase Edge / Image Shift / Image Adjustment / Background Adjustment	
Scan		
Compatibility	Network TWAIN / Network SANE	
Method	MMT	
Resolution (Optical / Enhanced)	Up to 600 x 600 dpi / Up to 4,800 x 4,800 dpi	
Scan to / Destination	Scan to: TIFF-S / TIFF-M / JPEG / PDF / Compact PDF / XPS / Destination: EMAIL / FTP / SMB / HDD / USB / WSD / PC	
Fax		
Compatibility	ITU-T G3 / Super G3	
Modem Speed	33.6 Kbps	
Resolution (Mono)	Up to 600 x 600 dpi	
Fax Feature	On hook Dial, Search, Speed Dial, TAD I/F, Tone/Pulse, Pause, Auto Redial, Last Number Redial, Caller ID, External Phone Interface, Fax Forward to E-Mail, Broadcasting, Delayed Fax	
Paper Handling		
Input Capacity and Types	Standard: 1,140-sheet cassette tray, 100-sheet MP tray / Max: 2,180 sheets	
Output Capacity and Type	500 sheets Face Down	
Standard Cassette	Media Sizes:	Cassette 1: 148.5 x 210 mm ~ 297 x 354 mm (5.8" x 8.2" ~ 11.7" x 14") / Cassette 2: 148.5 x 210 mm ~ 297 x 432 mm (5.8" x 8.2" ~ 11.7" x 17")
	Media Types:	Plain / Thin / Bond / Hole Punched / Pre-Printed / Recycled / Thin CardStock / Letterhead / Thick / Cotton / Colored / Archive / Thin Glossy/ Heavy Weight / Extra Heavy Weight
Multipurpose Tray	Media Sizes:	98 x 148 mm ~ 297 x 432 mm (3.8" x 5.8" ~ 11.7" x 17")
	Media Types:	Plain / Thin / Bond / Hole Punched / Pre-Printed / Recycled / Thin CardStock / Letterhead / Thick / Cotton / Colored / Archive / Thin Glossy / Heavy Weight / Envelope / Label
ADF Document Size	Width: 5" - 11.7" (128 - 297 mm) Length: 5.5" - 17" (140 - 432 mm)	
Capacity	100-Sheet Single Pass Duplexing (DSDF)	
General Features		
Mobility	Google Cloud Print, Apple AirPrint, Samsung Mobile Print, NFC Tap and Print (optional)	
Display	10.1" Color Touch-Panel LCD (960 x 600)	
Interface	Hi-Speed USB 2.0 Host, Std Ethernet 10/100/1G Base TX (Wired LAN), IEEE 802.11b/g/n + NFC Active Type (Optional)	
Noise Level	Printing: Less than 50 dBA (Sound Pressure) / Standby: Less than 30 dBA (Sound Pressure) / Sleep: Less than 27 dBA (Sound Pressure)	Printing: Less than 49 dBA (Sound Pressure) / Standby: Less than 30 dBA (Sound Pressure) / Sleep: Less than 27 dBA (Sound Pressure)
Memory	2 GB	
HDD Standard	320 GB	
OS Compatibility	- Windows: XP (32 / 64 bit) / Vista (32 / 64 bit) / 2003 Server (32 / 64 bit) / 2008 Server (32 / 64 bit) / Win7 (32 / 64 bit) / 2008 R2 (64 bit) / Win8 (32 bit / 64 bit) - Linux: RedHat Enterprise Linux WS 4 / 5 / 6 (32 / 64 bit) / Fedora 5 - 15 (32 / 64 bit) / openSUSE 10.2, 10.3, 11.0, 11.1, 11.2, 11.3, 11.4 (32 / 64 bit) / Mandriva 2007, 2008, 2009, 2009.1, 2010 (32 / 64 bit) / Ubuntu 6.06, 6.10, 7.04, 7.10, 8.04, 8.10, 9.04, 9.10, 10.04, 10.10, 11.04 (32 / 64 bit) / SUSE Linux Enterprise Desktop 10, 11 (32 / 64 bit) - UNIX: Sun Solaris 9, 10, 11 (x86, SPARC) / HP-UX 11.0, 11i v1, 11i v2, 11i v3 (PA-RISC, Itanium) / IBM AIX 5.1, 5.2, 5.3, 5.4, 6.1, 7.1 (PowerPC) - Mac OS: X 10.5 - 10.9	
Monthly Duty Cycle	85,000 sheets/month	73,000 sheets/month
Dimension (W x D x H)	22.3" x 24" x 32.6"	
Weight	197.42 lbs. with Consumables	
Consumables		
CLT-C808S - Cyan Toner	20,000 Pages*	
CLT-M808S - Magenta Toner	20,000 Pages*	
CLT-Y808S - Yellow Toner	20,000 Pages*	
CLT-K808S - Black Toner	23,000 Pages*	
CLT-R808 - Imaging Unit	100,000 Pages*	
CLT-W808 - Waste Container	33,700 Pages	

*Declared cartridge yield in accordance with ISO/IEC 19752

SAMSUNG

For complete product information and accessories, visit samsung.com/business or samsung.com/b2bprinters

Product Support: 1-800-SAMSUNG or 1-866-SAM4BIZ | Follow Us:  youtube.com/samsungbizusa |  [@SamsungBizUSA](https://twitter.com/SamsungBizUSA)



Samsung Electronics has been named 2013 ENERGY STAR Partner of the Year in the product manufacturing category by the U.S. Environmental Protection Agency (EPA).

©2015 Samsung Electronics America, Inc. Samsung is a registered trademark of Samsung Electronics Corp., Ltd. Specifications and designs are subject to change without notice. Non-metric weights and measurements are approximate. Intel, the Intel logo, Intel Core and Core Inside are all trademarks of Intel Corporation in the U.S and other countries. All brand, product, service names and logos are trademarks and/or registered trademarks of their respective manufacturers and companies. See samsung.com for detailed information. Printed in USA on 50% recycled (30% post-consumer waste) paper using soy inks. PNT-X430LX/X4250LX/B2BBRO-JAN15T

