

SAMSUNG

Samsung **MultiXpress** M5370LX

THE NEW WAY OF PRINTING, INNOVATED
FOR SMARTER BUSINESS



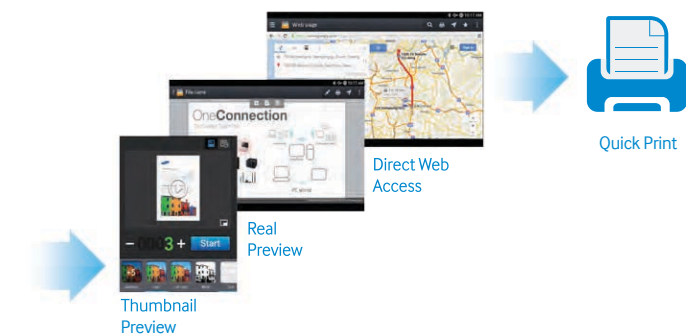
Go beyond your work capabilities with print innovation.

To keep up with the fast-paced business world, workplaces are embracing bring your own device (BYOD) policies. This trend is leading to more efficient, more seamless operations and highly productive employees using smartphones, tablets and cloud computing in the office.

Businesses now want to extend that same smart technology to all devices. Printers are expected to have the same functionalities and interoperability as cutting-edge mobile devices, and businesses are seeking print solutions that can be easily managed while delivering powerful performance at reduced costs.

Samsung's new multifunction printer (MFP), the MultiXpress M5370LX, provides smart usability that allows users to work faster and more efficiently using intuitive, easy-to-use controls. And with high-performance and resource-efficient features, this MFP can meet the printing needs of work groups that depend on reliable, cost-competitive document handling solutions, while lowering total cost of ownership (TCO).

Work smarter using the latest in intelligent touch features.

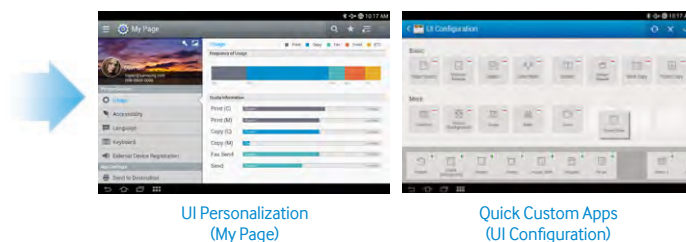


USE

Expand Use with Independent Functions and Extensibility

The Real Preview function is available in preloaded applications, such as Copy, Send and Box. Usability can be further extended with the built in Web Print Browser, which allows you to quickly print content such as maps, pictures, e-mail and more without a PC.

Access even more useful features and solutions by downloading them through the Samsung Print App store.



TOUCH

Touch to Print, Just Like on a Tablet

The MultiXpress M5370LX provides innovative usability through the Samsung SMART UI Center, the very first Android printing User Interface (UI). This user-friendly interface provides intuitiveness, usability and extensibility.

Enjoy Preloaded Applications and Widgets

Applications are preloaded, including Copy, Scan/Send, Box (Document Storage), Job Status, Counter, Settings, Build Job, Address Book and Help, which provide users with more convenient usability. In addition, there are custom widgets for creating instant, one-touch access to frequently used functions.

MANAGE

Personalize the User Interface Through My Page

Enhance the UI by arranging and managing the environment per user with My Page. Simply customize the settings and Quick Menu for each user, and keep track of an individual's usage, control accessibility and more.

Create Custom Shortcuts and Personalized UIs

Administrators can create custom shortcuts directly on the device. Instantly perform complex tasks with one click by customizing the interface configuration.

Print and scan at super-fast speeds without sacrificing quality.

Boost productivity with ultra-fast performance.

Work fast, wait less.

Scan at High Speed

The MultiXpress M5370LX is equipped with a Dual Scan Document Feeder (DSDF), enabling it to deliver high scanning speeds. This workhorse MFP can scan up to 55 single-sided images per minute (ipm) and up to 80 double-sided ipm.

Faster Print Processing with Zero Fuss

The MultiXpress M5370LX prints at speeds of up to 55 pages per minute (ppm). A 1 GHz dual-core CPU provides the power and capacity to accomplish print and copy jobs of any size or complexity.



Edge Enhancement



Negative Sharpening



De-ICE (Integrated Cavity Effect)



De-Screening

Get Sharper-Quality Print Output

Samsung's unique Rendering Engine for Clean Page (ReCP) technology delivers professional-quality output with sharp text and clean images. The innovative technology automatically sharpens the focus of both graphics and text. And with a superior resolution of 1,200 x 1,200 effective dpi, your scans, printouts and company will always look professional.

Ultra-Fast Dual Scan
Up to 80 ipm



Samsung MPS, Mobile, Security and Productivity Solutions.

Samsung's strategic partnerships allow us to offer simplified, seamless solutions that increase both security and office productivity.

SAMSUNG	INTEGRATED SOLUTION VENDOR		SAMSUNG SOLUTIONS
MPS / FLEET MANAGEMENT	Compass Sales Solutions FMAudit	MWA Intelligence▲ PrintFleet	SyncThru Admin™
OUTPUT MANAGEMENT COST ACCOUNTING	Copitrak Drive▲ Equitrac▲	Jetmobile▲★★ PaperCut▲ Pharos Systems▲★	BUSINESS CORE™ PRINTING SOLUTIONS Usage Tracker▲ SecuThru™ Lite 2▲
DOCUMENT DISTRIBUTION CONTENT MANAGEMENT	EMC² Drive▲ GoldFax▲ InfoDynamics▲★★	Intellinetics LaserFiche▲★★ Notable Solutions, Inc.▲★ Omtool▲	Cloud Connector▲ Secure Login Manager▲ SmarThru™ Workflow Lite▲ SmarThru™ Workflow 3▲
MOBILE AND CLOUD	Drive▲	EFI	Samsung Mobile Print App PrinterOn

▲XOA Solution ★Limited **2015

Manage expenses through cost-efficient operations.

Lower your TCO with cost-efficient solutions and supplies.

Do more jobs, spend less.

Save Resources with Low TCO Printing

Businesses can handle heavy printing volumes while reducing costs with the MultiXpress M5370LX. Flexible options include a long-life drum supporting up to 100,000 pages and extra-high yield toner supporting up to 30,000* pages, which are designed to perform longer, resulting in a lower total cost of ownership.

MLT-D358S:
Toner Cartridge
(30,000 page yield)

MLT-R358:
Imaging Unit (OPC)
(100,000 page yield)



Create a Customized and Cost-Efficient Printing Environment

Samsung Business Core™ Printing Solutions (BCPS) is a software suite that runs on the XOA-Embedded platform and was created for small to medium-sized businesses to improve workplace efficiency. With custom workflows, secure print release and cloud printing, IT managers can easily implement the kind of print and document management solutions typically seen in the enterprise. These essential printing solutions include:



For further customization, numerous certified partner solutions are available through the Samsung XOA platform (XOA Embedded and XOA Web).



Manage your printing needs from a Samsung mobile device.

The Samsung Wireless and NFC printing option can be added to support various mobile printing solutions with just a tap, including:

User Authentication: Enable authorized users to tap and print to a Samsung MFP from their mobile devices.

Secure Printing: Authorize secure release of documents held in the printer's memory with BCPS and your mobile device.

Easy Wireless Setup: Configure wireless (IP) print setup from your mobile device without complicated activation steps.

Device Cloning: Clone standardized functions of an MFP.

Google Cloud Print: Allows user to print to their Samsung printers from any device at any time.



The Samsung Mobile Print App Makes the Smartphone Smarter

Increase your productivity with the Samsung Mobile Print App, available as a free download for Android and iOS platforms. Print, scan and fax directly to and from any Samsung printer or MFP on a local wireless network or via Wi-Fi Direct on select models. Print important emails, PDFs and Microsoft® Office documents, all without the need for an external server or PC.



PrinterOn is the world's leading enterprise-grade mobile printing platform, and is designed for any organization that wants to provide simple, secure mobile and cloud printing.



Samsung's Mobile Print solution earned the Summer 2012 Pick as "Outstanding Mobile Print App" from Buyers Lab, Inc.

*Declared cartridge yield in accordance with ISO/IEC 19752

Customize your office with a flexible print solution.

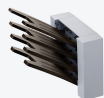
Select from a range of options to create a tailor-made MFP.

With its unique configuration capabilities, the MultiXpress M5370LX can meet the needs of firms of varying sizes and in varying industries. Options include a wireless and NFC adapter, Foreign Device Interface (FDI) Kit, various stand sizes and more.

CONFIGURATIONS AND OPTIONS

4-Bin Mailbox

- 400 sheets
- SL-MBT0401



1-Bin Finisher

- 500 sheets
- SL-FIN001M



Staples

SCX-STP000



2-Bin Finisher

- 100/500 sheets
- SL-FIN002M



Fax Kit

SL-FAX1001



FDI Kit

SCX-KIT20F



DSDF (standard) Dual Scan Automatic Document Feeder

- 100-sheet capacity
- Single-pass 2-sided document scanning
- Paper empty / width / length detection

Wireless and NFC Option

SL-NWE001X



- IEEE 802.11 b/g/n
- NFC (Active Type)



High-Capacity Feeder

- 2,100 sheets
- SL-HCF001B



or



Second Cassette Feeder

- 520 sheets
- Up to 1
- SL-SCF300



High-Capacity Feeder

- 2,100 sheets
- SL-HCF001B

or



Second Cassette Feeder

- 520 sheets
- Up to 1
- SL-SCF300



Cabinet Stand

SL-DSK001T

or



Second Cassette Feeder

- 520 sheets
- Up to 3
- SL-SCF300



Short Stand

SL-DSK002S

Specifications	M5370LX
Print	
Speed	Up to 55 pages per minute (in letter)
First Print Out Time	Less than 7.5 seconds
Resolution	Up to 1200 x 600 dpi
Emulation	PCL5e / PCL6 / PostScript3 / PDF Direct V1.7
Duplex	Standard
Copy	
Speed	Up to 55 pages per minute (in letter)
First Copy Out Time	Less than 4.5 seconds
Resolution (Platen / DADF)	Scan 600 x 600 dpi / Printing 600 x 600 dpi
Reduce & Enlarge	25% ~ 400% (Platen Copy), 25% ~ 200% (Single pass duplexing ADF Copy)
Multi Copy	1~9,999 pages
Duplex Copy	Standard
Copy Features	Erase Edge / Margin Shift (Auto Center / Custom Margin) / Book Center Erase / Form Copy / Watermark Copy / Page Numbering / Time & Date Stamp / ID Stamp / Job Program / Erase Background (Auto / Erase 7 Levels / Enhance 3 Levels) / Erase Backside Image (10 Levels) / Sharpness (11 Levels) / Negative Image (On/Off) / Job Build / Mirror
Scan	
Compatibility	TWAIN (Only for USB), WIA (N/A)
Method	CCD
Resolution (Optical / Enhanced)	Up to 600 x 600 dpi / Up to 4,800 x 4,800 dpi
Scan to / Destination	Scan to: TIFF-S / TIFF-M / JPEG / PDF / Compact PDF / XPS / Destination: EMAIL / FTP / SMB / HDD / USB / Client
Fax	
Compatibility	ITU-T G3, Super G3
Modem Speed	33.6 Kbps
Resolution (Mono)	Up to 600 x 600 dpi
Memory	HDD Shared
Fax Feature	On Hook Dial, Search, Speed Dial, TAD V/F, Tone/Pulse, Pause, Auto Redial, Last Number Redial, Distinctive Ring, Caller ID, External Phone Interface, Fax Forward to E-Mail, Broadcasting, Delayed Fax
Paper Handling	
Input Capacity and Types	Standard: 520-sheet cassette Tray, 100-sheet MP tray / Max: 3,240 sheets (with options)
Output Capacity and Type	520 sheets Face Down
Media Size	3.85" x 5.83" ~ 8.5" x 14", A4, A5, A6
Media Type	Letter / Legal / Oficio / Folio / A4 / JIS B5 / ISO B5 / Executive / A5 / Statement / A6 / PostCard 4x6 / Envelope B5 / Envelope Monarch / Envelope COM-10 / Envelope DL / Envelope C5 / Envelope C6 / Custom [Min: 98 mm x 148 mm (3.85" x 5.83") / Max: 216 x 356 mm (8.5" x 14")]
Media Weight	Standard Cassette Tray: 60 - 163 g/m2 (16 - 39 lb), Duplex Supported Weight: 60 - 90 g/m2 (16 - 24 lb) / Plain Paper: 70 - 90 g/m2 (18 - 24 lb) / Thin Paper: 60 - 69 g/m2 (16 - 18 lb) / Bond: 105 - 120 g/m2 (28 - 32 lb) / Punched: 60 - 90 g/m2 (16 - 24 lb) / Pre-Printed: 75 - 85 g/m2 (20 - 23 lb) / Recycled: 60 - 85 g/m2 (16 - 23 lb) / Envelope: 75 - 90 g/m2 (20 - 24 lb) / Label: 120 - 150 g/m2 (32 - 40 lb) / CardStock: 106 - 163 g/m2 (28 - 43 lb) / Letterhead: 75 - 90 g/m2 / Thick Paper: 91 - 105 g/m2 (24 - 28 lb) / Colored: 75 - 85 g/m2 (20 - 23 lb) / Cotton Paper: 75 - 85 g/m2 (20 - 23 lb) / Multipurpose Tray: 60 - 163 g/m2 (16 - 43 lb)
ADF Document Size	Width: 5.7" ~ 8.5" (145 ~ 216 mm) Length: 5.7" ~ 14.0" (145 ~ 356 mm)
ADF Capacity	100-sheet single pass duplexing (DSDf)
General Features	
Mobility	Google Cloud Print, Apple AirPrint, Samsung Mobile Print, NFC Tap and Print (optional)
Display	10.1" Color Touch-Screen LCD
Interface	Hi-Speed USB 2.0 Host (2 Ports), Hi-Speed USB 2.0 Peripheral (1 Port), Ethernet 10/100/1000 base TX, FDI (Optional)
Noise Level	Printing: 56dBA / Copying: 58dBA / Standby: 37dBA / Sleep: Background Noise Level
Memory	RAM: 2GB/2GB Standard/Max
HDD (Standard)	320GB
OS Compatibility	- Windows: XP (32 / 64 bit) / Vista (32 / 64 bit) / 2003 Server (32 / 64 bit) / 2008 Server (32 / 64 bit) / Win7 (32 / 64 bit) / 2008 R2 (64 bit) / Win8 (32 bit / 64 bit) - Linux: RedHat Enterprise Linux WS 4 / 5 / 6 (32 / 64 bit) / Fedora 5 - 15 (32 / 64 bit) / openSUSE 10.2, 10.3, 11.0, 11.1, 11.2, 11.3, 11.4 (32 / 64 bit) / Mandriva 2007, 2008, 2009, 2009.1, 2010 (32 / 64 bit) / Ubuntu 6.06, 6.10, 7.04, 7.10, 8.04, 8.10, 9.04, 9.10, 10.04, 10.10, 11.04 (32 / 64 bit) / SUSE Linux Enterprise Desktop 10, 11 (32 / 64 bit) / Debian 4.0, 5.0, 6.0 (32 / 64 bit) - UNIX: Sun Solaris 9,10,11 (x86, SPARC) / HP-UX 11.0, 11i v1, 11i v2, 11i v3 (PA-RISC, Itanium) / IBM AIX 5.1, 5.2, 5.3, 5.4, 6.1, 7.1 (PowerPC) - Mac OS: X 10.5 - 10.9
Monthly Duty Cycle	300,000 sheets/month
Dimension (W x D x H)	24.8" x 19.9" x 25.0"
Weight	107.9 lbs. with Consumables
Consumables	
Toner	MLT-D358S, 30,000 Pages*
Imaging Unit	MLT-R358, 100,000 Pages*
Options	
Paper Handling	SL-DSK001T: Cabinet Stand SL-DSK002S: Short Stand SL-SCF5300: Second Cassette Feeder (520 sheets x 1 ~ 3) SL-HCF001B: High Capacity Cassette Feeder (2,100 pages)
Finishing Options	SL-FIN001M: 1-Bin Finisher SL-FIN002M: 2-Bin Finisher SL-MBT0401: Multi-Bin Mailbox SCX-STP000: Finishing Staples Cartridge 15K Yield
Interface	SL-FAX1001: Fax Kit SL-NWE001X: Wireless + NFC SCX-KIT20F: FDI Kit (Foreign Device Kit)

*Declared cartridge yield in accordance with ISO/IEC 19752

SAMSUNG

For complete product information and accessories, visit samsung.com/business or samsung.com/b2bprinters

Product Support: 1-800-SAMSUNG or 1-866-SAM4BIZ | Follow Us:  youtube.com/samsungbizusa |  [@SamsungBizUSA](https://twitter.com/SamsungBizUSA)



Samsung Electronics has been named 2013 ENERGY STAR Partner of the Year in the product manufacturing category by the U.S. Environmental Protection Agency (EPA).

©2014 Samsung Electronics America, Inc. Samsung is a registered trademark of Samsung Electronics Corp., Ltd. Specifications and designs are subject to change without notice. Non-metric weights and measurements are approximate. Intel, the Intel logo, Intel Core and Core Inside are all trademarks of Intel Corporation in the U.S. and other countries. All brand, product, service names and logos are trademarks and/or registered trademarks of their respective manufacturers and companies. See samsung.com for detailed information. Printed in USA on 50% recycled (30% post-consumer waste) paper using soy inks. PNT-M5370LXBRO-DEC14T

