



SCX-6555N/6545N
MultiXpress Monochrome Multifunction Printers

Centralized Workflow Solution



The Professional Solution Center

Powerful applications provide businesses with customizable solutions. Samsung's MultiXpress provides high-speed printing and copying with customizable control to increase productivity and maintain economical running cost.

Samsung offers in-house and select partner solutions.

Samsung offers MPS, mobile, security and productivity solutions. These solutions allow you to create a more efficient and secure workgroup.

	Document Management/Workflow <ul style="list-style-type: none"> • DPD - GoldFax^Δ • Drive^Δ • Intellinetics^Δ • Perceptive^Δ • Prism^Δ • SmarThru3 (Workflow)*
	Managed Print Services <ul style="list-style-type: none"> • Compass • GreatAmerica Leasing • LMI • MWAi^Δ • PrintFleet
	Job Accounting/Pull Printing <ul style="list-style-type: none"> • Bits^Δ • EFI • Equitrac^Δ • Genius Bytes^Δ • ITC • Jetmobile • OCM^Δ • PaperCut^Δ • Pharos^Δ • SafeCom^Δ • Vendapin
	Device Management <ul style="list-style-type: none"> • SyncThru* (Web Admin) • SyncThru 6* (Web Services)
^Δ XOA platform solution. * Samsung in-house solution.	



Free Samsung Mobile Print App

Lets you print, scan and fax to/from mobile devices. Just connect to your MFP wirelessly and print, scan or fax without the need to install any drivers.*

*Note: Wireless Access Point (AP) is required



The Samsung Mobile Print App earned the 2012 Pick Award from Buyers Lab, Inc.

Protect both resources and data.


Data security is a major concern of businesses today. The Samsung Security Framework is standard on the MultiXpress 6555N and MultiXpress 6545N MFPs. It increases network protection and helps prevent unauthorized access to confidential information.

	Authenticated User	<ul style="list-style-type: none"> • Authentication • Authorization • Accounting
	Protected Network	<ul style="list-style-type: none"> • Secure Socket Layer (SSL)/ Transport Layer Security (TLS) • Simple Network Management Protocol (SNMP) v3 • Internet Protocol Security IPsec (Internet Protocol [IP] v4, IPv6) • 802.1x with Extensible Authentication Protocol [EAP] • Protocol/port management • MAC/IP filtering
	Secure Document	<ul style="list-style-type: none"> • Secure print • Secure scan • Secure fax • Document tagging (watermark, stamps)
	Secure Data	<ul style="list-style-type: none"> • Encryption • Hard disk drive image overwrite • Digital signature
	Secure Management	<ul style="list-style-type: none"> • System logs • System back up • Email notification



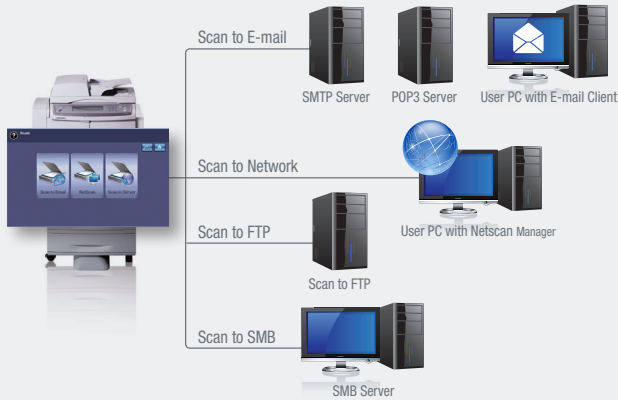
*Shown with optional equipment.

XOA Express Application Platform*

 XOA Express application platform is Samsung's open architecture system that allows you to add custom applications and services on your MFP, so that it can be easily integrated and optimized with your workflow.
 *XOA model special order only

Scan to Anywhere

The MultiXpress 6555N/6545N helps to distribute documents efficiently by scanning directly to email, FTP, SMB or client.



Document Box

Store scanned data into HDD and manage the stored data. Print and send your scanned data stored on the standard 80GB hard disk drive at any time.



Configurations: Main Unit (520 sheets + MP 100 sheets) + Finishing Options



1 Finisher + 1 SCF
 (Single Cassette Feeder)
 520 Sheets
 +
HCF
 (High Capacity Feeder)
 2,100 sheets

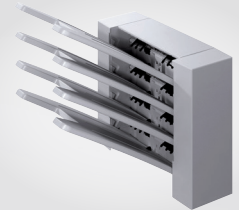


1 Finisher + 3 SCF Max.
 (Single Cassette Feeder)
 520 Sheets x 3
 +
Short Stand

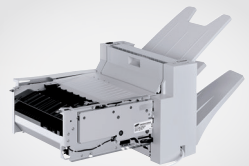


1 Finisher + 1 SCF
 (Single Cassette Feeder)
 520 Sheets
 +
Tall Stand

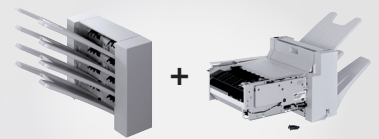
Accessories



4-Bin Mailbox (SCX-MBT40S)
 Output capacity: 400 sheets



2-Bin Finisher (SCX-FIN20S)
 Output capacity: 600 sheets



Combination:
 4-Bin Mailbox (SCX-MBT40S) and
 2-Bin Finisher (SCX-FIN20S)
 Output capacity: 1,000 sheets
 You can collate your printed documents and staple documents of up to 50 pages. Staple cartridge capacity is 5,000.

Specifications	MultiXpress 6555N	MultiXpress 6545N
Print		
Speed	Up to 55 ppm	Up to 45 ppm
Resolution	1,200 x 1,200 dpi effective output	1,200 x 1,200 dpi effective output
First Print Out Time	Less than 8 seconds (from ready mode)	Less than 8 seconds (from ready mode)
Emulation	PCL5, PCL6, Postscript Level 3, TIFF, JPG, PDF v1.4	PCL5, PCL6, Postscript Level 3, TIFF, JPG, PDF v1.4
Copy		
Speed	Up to 55 ppm	Up to 45 ppm
Resolution	600 x 600 dpi	600 x 600 dpi
First Copy Out Time	Less than 5 seconds	Less than 5 seconds
Zoom Rate	25-400% (platen), 25-200% (ADF)	25-400% (platen), 25-200% (ADF)
Copy Features	ID copy, Clone Copy, N-up Copy, Poster Copy, Booklet	ID copy, Clone Copy, N-up Copy, Poster Copy, Booklet
Scan		
Compatibility	Twain Standard, WIA Standard	Twain Standard, WIA Standard
Method	Color Flatbed Scanner or DADF	Color Flatbed Scanner or DADF
Resolution (Optical) / (Enhanced)	600 x 600 dpi / 4,800 x 4,800 dpi	600 x 600 dpi / 4,800 x 4,800 dpi
Scan to	HDD, USB, Email, Client, SMB, FTP	HDD, USB, Email, Client, SMB, FTP
Fax		
Compatibility / Modem Speed	ITU-T G3 / 33.6Kbps	ITU-T G3 / 33.6Kbps
Resolution	Mono: 300 x 300 dpi / Color: 200 x 200 dpi	Mono: 300 x 300 dpi / Color: 200 x 200 dpi
Memory	HDD Storage (80GB HDD)	HDD Storage (80GB HDD)
Auto Dialing	Speed Dial: 200 Locations	Speed Dial: 200 Locations
Fax Features	On-hook Dial, Auto Redial, Last Number Redial, Mail Box, Auto Reduction, Multi Send, Delayed Send, Fax Forwarding (HDD, Email, Fax)	On-hook Dial, Auto Redial, Last Number Redial, Mail Box, Auto Reduction, Multi Send, Delayed Send, Fax Forwarding (HDD, Email, Fax)
Paper Handling		
Input Capacity and Types	520-Sheet Cassette, 100-Sheet Multi-Purpose Tray	520-Sheet Cassette, 100-Sheet Multi-Purpose Tray
Output Capacity and Types	Up to 500 sheets Face Down	Up to 500 sheets Face Down
Media Size	3.86" x 5.83" - 8.5" x 8.5" x 14"	3.86" x 5.83" - 8.5" x 8.5" x 14"
Media Type	Plain, Thin, Envelope, Labels, Card Stock, Bond, Archived, Punched, Pre-Printed, Recycled, Transparency, Letterhead, Thick, Colored	Plain, Thin, Envelope, Labels, Card Stock, Bond, Archived, Punched, Pre-Printed, Recycled, Transparency, Letterhead, Thick, Colored
ADF Capacity	100-Sheet DADF	100-Sheet DADF
ADF Document Size	Width: 5.7"-8.5", Length: 5.7" - 14.0" for Single Page Scan, 5.7" - 15.7" for Multi Page Scan	Width: 5.7"-8.5", Length: 5.7" - 14.0" for Single Page Scan, 5.7" - 15.7" for Multi Page Scan
General Features		
LCD	800 x 480 7" WGA Color Touch Screen LCD	800 x 480 7" WGA Color Touch Screen LCD
Memory / Storage	256MB (Max 512MB) / 80GB HDD	256MB (Max 512MB) / 80GB HDD
Processor	500 MHz	500 MHz
Connectivity	Hi-Speed USB 2.0, Ethernet 10/100/1000 base TX, USB host 2.0 (Scan to and print from USB device)	Hi-Speed USB 2.0, Ethernet 10/100/1000 base TX, USB host 2.0 (Scan to and print from USB device)
OS Compatibility	[Windows] XP 32/64 bit, Vista 32/64 bit, Windows 7/8 32/64 bit, Windows 2003 Server 32/64 bit, Windows Server 2008 32/64 bit, Windows Server 2008 R2 64 bit / [Linux] RedHat Enterprise Linux WS 4, 5 (32/64 bit) Fedora 5, 6, 7, 8, 9, 10, 11, 12, 13 (32/64 bit) / SuSE Linux 10.1 (32 bit) / OpenSUSE 10.2, 10.3, 11.0, 11.1, 11.2 (32/64 bit) / Mandriva 2007, 2008, 2009, 2009.1, 2010 (32/64 bit) / Ubuntu 6.06, 6.10, 7.04, 7.10, 8.04, 8.10, 9.04, 9.10, 10.04 (32/64 bit) / SuSE Linux Enterprise Desktop 10, 11 (32/64 bit) / Debian 4.0, 5.0 (32/64 bit) / [UNIX] Sun Solaris 9, 10 (x86, SPARC) / HP-UX 11.0, 11i v1, 11i v2, 11i v3 (PA-RISC, Itanium) - IBM AIX 5.1, 5.2, 5.3, 5.4 / [Mac] Mac OS X 10.4 ~ 10.7	[Windows] XP 32/64 bit, Vista 32/64 bit, Windows 7/8 32/64 bit, Windows 2003 Server 32/64 bit, Windows Server 2008 32/64 bit, Windows Server 2008 R2 64 bit / [Linux] RedHat Enterprise Linux WS 4, 5 (32/64 bit) Fedora 5, 6, 7, 8, 9, 10, 11, 12, 13 (32/64 bit) / SuSE Linux 10.1 (32 bit) / OpenSUSE 10.2, 10.3, 11.0, 11.1, 11.2 (32/64 bit) / Mandriva 2007, 2008, 2009, 2009.1, 2010 (32/64 bit) / Ubuntu 6.06, 6.10, 7.04, 7.10, 8.04, 8.10, 9.04, 9.10, 10.04 (32/64 bit) / SuSE Linux Enterprise Desktop 10, 11 (32/64 bit) / Debian 4.0, 5.0 (32/64 bit) / [UNIX] Sun Solaris 9, 10 (x86, SPARC) / HP-UX 11.0, 11i v1, 11i v2, 11i v3 (PA-RISC, Itanium) - IBM AIX 5.1, 5.2, 5.3, 5.4 / [Mac] Mac OS X 10.4 ~ 10.7
Noise Level	Less than 55 dBA (Printing) / Less than 57 dBA (Copying) / Less than 37 dBA (Standby)	Less than 55 dBA (Printing) / Less than 57 dBA (Copying) / Less than 37 dBA (Standby)
Duty Cycle, Monthly	Up to 250,000 pages	Up to 200,000 pages
Dimension (W x D x H)	25.2" x 19.4" x 23.9"	25.2" x 19.4" x 23.9"
Weight	106.3 lbs.	106.3 lbs.
Consumables		
Average Toner Cartridge Yield	25,000 standard pages (declared yield in accordance with ISO/IEC 19752)	25,000 standard pages (declared yield in accordance with ISO/IEC 19752)
Average Drum Yield	80,000 standard pages	80,000 standard pages
Model Codes	25,000 Page Toner Cartridge (SCX-D6555A) / 80,000 Page Drum (SCX-R6555A)	25,000 Page Toner Cartridge (SCX-D6555A) / 80,000 Page Drum (SCX-R6555A)
Accessories	256MB Memory Module (ML-MEM160) 520 Sheet Cassette Feeder (SCX-S6555A) 2,100 Sheet High Capacity Feeder (SCX-HCF100) Fax Kit (SCX-FAK210) 1-Bin Finisher (SCX-FIN11S) 2-Bin Finisher (SCX-FIN20S) 4-Bin Mailbox (SCX-MBT40S) Staple Cartridge (SCX-STP000) Short Stand (SCX-DSK10S) Tall Stand with Storage Cabinet (SCX-DSK10T) FDI Kit (SCX-KIT20F) 125,000 Yield Service Maintenance (SCX-V6555B) 250,000 Yield Service Maintenance (SCX-V6555A)	256MB Memory Module (ML-MEM160) 520 Sheet Cassette Feeder (SCX-S6555A) 2,100 Sheet High Capacity Feeder (SCX-HCF100) Fax Kit (SCX-FAK210) 1-Bin Finisher (SCX-FIN11S) 2-Bin Finisher (SCX-FIN20S) 4-Bin Mailbox (SCX-MBT40S) Staple Cartridge (SCX-STP000) Short Stand (SCX-DSK10S) Tall Stand with Storage Cabinet (SCX-DSK10T) FDI Kit (SCX-KIT20F) 125,000 Yield Service Maintenance (SCX-V6555B) 250,000 Yield Service Maintenance (SCX-V6555A)
Green Management		
	ENERGY STAR® Compliant, S.T.A.R. Program (Samsung Toner Recycle Program)	ENERGY STAR® Compliant, S.T.A.R. Program (Samsung Toner Recycle Program)

*Print speed will be affected by operating system used, computing performance, application software, connecting method, media type, media size and job complexity. **Copy speed is based on Single Document Multiple Copy.

Product Support: 1-866-SAM4BIZ | 1-800-SAMSUNG | samsung.com/printer

Follow us:  @SamsungBizUSA |  youtube.com/samsungbizusa



Samsung Electronics has been named 2012 ENERGY STAR Partner of the Year in the product manufacturing category by the U.S. Environmental Protection Agency (EPA).



©2013 Samsung Electronics America, Inc. Samsung is a registered mark of Samsung Electronics Corp., Ltd. Specifications and designs are subject to change without notice. Non-metric weights and measurements are approximate. All brand, product, service names and logos are trademarks and/or registered trademarks of their respective manufacturers and companies. Simulated screen images. Printed in USA on 50% recycled (80% post-consumer waste) paper using soy inks. PNT-6555N6545NPBRO-MAY13T

