

SAVIN®

MP C4502 MP C5502 & MP C4502A MP C5502A

Multifunction Color

- ✓ Copier
- ✓ Printer
- ✓ Facsimile
- ✓ Scanner



MP C4502
MP C4502A

45
ppm

monochrome
and full-color

MP C5502
MP C5502A

55
ppm

monochrome
and full-color

Busy has never looked so easy

A fast-paced workplace offers something new and exciting every day. It's time your Multifunction Product (MFP) does too. The versatile SAVIN® MP C4502/MP C5502 Series delivers high-quality, full-color performance to streamline your unique workflow demands. These innovative MFPs leverage advanced capabilities found only in Savin's services led platform to simplify even the most complex printing, copying, scanning, and distribution tasks. With robust security features, impressive finishing capabilities and eco-friendly operation, these MFPs manage heavy workloads with exceptional efficiency. Choose this series to be the primary system for your workgroup or as an integral part of our Managed Document Services (MDS) strategy to help enhance productivity and reduce total cost of ownership throughout your organization.

- Produce 45-55 color prints/copies per minute
- Enjoy versatile performance in an intelligent, compact design
- Take advantage of convenient, customizable one-touch home screen operation
- Support environmental and security best practices and standards
- Improve efficiency with powerful administrative tools



Improve every aspect of your output environment

Enjoy efficiency and quality

Customize your user interface

This system sets a new standard for intuitive operation. Users can quickly and easily customize the operations panel home screen with their own company logo, workflows, preferences and settings — bringing speed and convenience to every job. You can also tilt the panel and lock it in a position that is ergonomically comfortable.



Control individual or group usage

Reducing waste has never been easier. The system allows administrators to set quotas for individuals or workgroups, which helps control costs associated with paper, supplies and energy consumption. An Eco-Friendly Indicator also minimizes costs by providing paper usage histories for specific users and certain job types.



Print reliably, with better quality

For professional-looking documents, Savin's advanced PXP-EQ toner delivers crisp, monochrome and color reproduction every time. The newly designed fusing technology measurably shortens the sleep-to-operate time, which improves image quality and reduces power consumption.



Protect your documents and data

The Savin MP C4502/MP C5502 Series incorporates a host of state-of-the-art security features that helps with security compliance requirements — both yours and organizations you serve. For example, passwords and user authentication help prevent unauthorized copying or printing. By utilizing DOSS, information is overwritten on the HDD.





Full-featured, performance enhancing

Produce high-quality documents — fast

The Savin MP C4502/MP C5502 Series offers a powerful integration of speed and reliability that improves both personal and workgroup productivity. This system prints or copies up to 55 pages-per-minute. An impressive warm-up time of less than 24 seconds means faster output and less waiting. Individual prints or copies take less than six seconds. A choice of three finishing options — including a 2,000-Sheet Booklet Finisher — adds a professional touch to any document.



Take advantage of powerful connections

Enjoy full compatibility throughout the office with a host of network capabilities engineered specifically to enhance efficiency. Print from most manufacturers' mobile devices by downloading their application for convenient output when and where it is needed most. Generate output at the device using a USB memory or SD card for convenience and flexibility.



Share documents with greater speed and confidence

This new series lets you scan, share and store documents quickly and easily. You can scan full-color or monochrome originals and share them instantly with Scan-to-Email/Folder/HDD. Preview full-color thumbnails of scanned pages to ensure quality and accuracy before distributing them. Access LDAP-registered directories and information, including Home Directory, for fast, convenient scanning and easier, cost-effective administration. This system also offers a High Compression PDF feature, which allows you to compress file sizes for faster, more reliable distribution.



Personal, powerful and secure

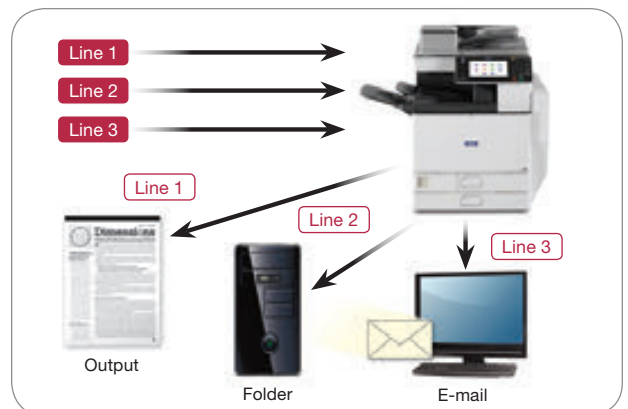
Work the way you want with customizable features

Configure the Savin MP C4502/MP C5502 Series to align perfectly with the way you like to work. A tiltable, full-color control panel features a customizable, personal Home Screen. You can quickly configure workflows, choose icons and create convenient single-step shortcuts for frequently used operations. Assign personal preferences and selected functions to five, one-touch function keys. An external keyboard can be connected via a USB port to accommodate users who prefer traditional keyboard input to a touch screen. A time-saving Auto Job Promotion feature elevates jobs higher in the print queue if they are being blocked by jobs stopped due to errors.



Depend on efficient, reliable fax communications

An innovative Fax Connection option opens fast and streamlined communications with other Savin devices on the same network. This connection simplifies the infrastructure required for fax communications and keeps operating costs low. Connect up to three analog lines and greatly expand your fax capacity and reduce or eliminate network bottlenecks. You can also use the Internet Fax feature to distribute documents directly to e-mail addresses and eliminate long-distance costs. Inbound faxes can be automatically forwarded to e-mail addresses, network folders or the system hard drive.



Protect hardcopy and electronic documents

With the DataOverwriteSecurity System (DOSS) feature, the MFP will automatically destroy latent images and data stored on the internal HDD. The encryption feature will encrypt your address book, authentication information, and your stored documents on the MFP. Password-protected and user-specific authentication provides a secure line of defense. PDF/A file support and enhanced encryption also help to ensure a high global standard of information security. You can also store a print job at the device until an authorized user swipes their ID card or enters their ID information at the control panel to release it. Unauthorized Copy Control prevents fraudulent duplication of sensitive documents.





Manage your fleet with efficiency and precision

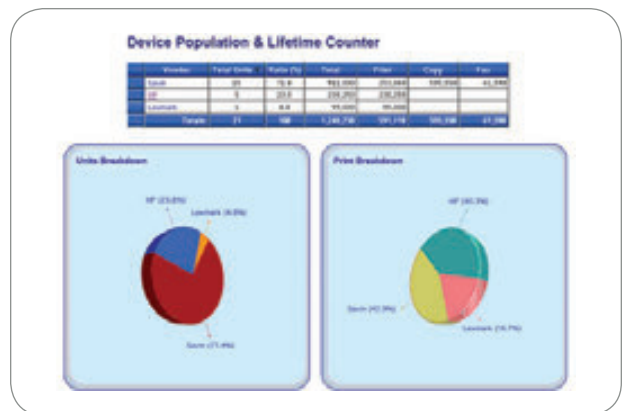
Simplify administrative tasks and system upgrades

A number of easy-to-use tools allow you to simplify virtually every type of job. You can dramatically reduce costs associated with wasted output by establishing print and copy quotas for as many as 1,000 users. Savin's Web Image Monitor lets you configure system settings, manage address books and monitor device status. Remote firmware upgrades make it easy to capitalize on the latest technology and optimize system performance.



Take control with user-friendly tools

Ensure your networked devices operate at peak efficiency via intuitive system management, device monitoring, troubleshooting and other administrative tools. Configure, organize and diagnose network devices remotely by accessing Web SmartDeviceMonitor from any standard web browser. Automate service calls and the collection of critical device data with @Remote™ software. You can even request e-mail alerts, so you'll know the moment supplies are low or an error is detected.



Minimize environmental impact, maximize savings

Savin's commitment to environmental responsibility is reflected in the design of this innovative system. You can measurably reduce your paper consumption by encouraging users to take advantage of the high-performance automatic duplexing — for both copying and printing. A built-in Eco-Friendly Indicator tells users how much they or their workgroups have saved by using two-sided printing capabilities. To minimize energy use and wait time, the Savin MP C4502/MP C5502 Series consumes only 1 watt while in Sleep Mode and recovers in less than 18 seconds.



Comprehensive features in a compact design



Savin MP C5502A

- 1 Easy access and intuitive operation on the homescreen via the large 8.5" full-color LCD control panel
- 2 100-sheet Single Pass Duplex Feeder (SPDF) to efficiently handle one- and two-sided originals for copying, scanning and faxing*
- 3 Standard 2 x 550-sheet paper trays for longer, uninterrupted runs
- 4 Standard 100-sheet bypass tray accommodates a wide range of paper sizes and types
- 5 Optional 2 x 550-sheet paper trays (shown) or 2,000-sheet large capacity tray for multiple paper sources on demand
- 6 Optional 1,200-sheet side LCT for even more productivity
- 7 A 1,000-sheet finisher, 2,000-sheet booklet finisher (shown), 3,000-sheet finisher and punch kits offer an entire range of finishing possibilities
- 8 125-sheet one-bin tray to separate output and simplify document retrieval

*The MP C4502 and the MP C5502 comes standard with an Automatic Reversing Document Feeder (ARDF).

Savin MP C4502/MP C5502/MP C4502A/MP C5502A

SYSTEM SPECIFICATIONS

General Specifications

Printing Process	Dry Electrostatic Transfer
Output Speed (Copy/Print)	MP C4502/A: 45 ppm BW & FC (LTR) MP C5502/A: 55 ppm BW & FC (LTR)
Warm-Up Time	MP C4502/A: 22.1 seconds MP C5502/A: 24.1 seconds
Recovery from Sleep Mode	MP C4502/A: 15 seconds MP C5502/A: 18 seconds
First Copy Time (FC/BW)	MP C4502/A: 5.7/3.6 seconds MP C5502/A: 4.8/3.1 seconds
Copy Resolution	600 dpi
Quantity Indicator	Up to 999 copies

Document Feeder

MP C4502/C5502 Automatic Reversing Document Feeder (ARDF)	Original Capacity: 100 sheets Original Size: 5.5" x 8.5" - 11" x 17" (A5 - A3) Paper Weight: Simplex: 11 - 34 lb. Bond (40 - 128 g/m ²) Duplex: 14 - 34 lb. Bond (52 - 128 g/m ²)
MP C4502A/C5502A Single Pass Duplexing Feeder (SPDF)	Original Capacity: 100 sheets Original Size: 5.5" x 8.5" - 11" x 17" (A5 - A3) Paper Weight: Simplex: 11 - 34 lb. Bond (40 - 128 g/m ²) Duplex: 14 - 34 lb. Bond (52 - 128 g/m ²)

Paper Capacity

Supported Paper Sizes	Standard: 2 x 550 sheets + 100-sheet Bypass Tray, Maximum: 4,400 sheets (w/Tandem LCT + Side LCT) 1st Paper Tray: 8.5" x 11" (A4) 2nd Paper Tray: 7.25" x 10.5" - 11" x 17", Envelopes (with option) Bypass: Up to 12" x 18", Envelopes Custom Sizes: Width: 3.5" - 12" (90 - 305 mm), Length: 5.8" - 23.6" (148 - 600 mm)
Supported Paper Weights	Standard Trays: 16 - 68 lb. Bond/140 lb. Index (52 - 256 g/m ²) Bypass Tray: 16 - 80 lb. Bond/110 lb. Cover (52 - 300 g/m ²) Duplex Unit: 16 - 45 lb. Bond/90 lb. Index (52 - 169 g/m ²)
Paper Types	Plain/recycled paper, laser printer qualified transparencies, labels, envelopes
Auto Duplex Output Capacity	Standard: 500 sheets Maximum: 3,625 sheets (w/3,000 Sheet Finisher + 1 Bin Tray)

Zoom Dimensions (WxDxH)

Zoom	25% - 400% in 1% increments
Dimensions (WxDxH)	MP C4502/C5502: 26.4" x 26.9" x 35.3" (670 x 682 x 895 mm) w/ARDF MP C4502A/C5502A: 26.4" x 26.9" x 36.7" (670 x 682 x 930 mm) w/SPDF
Weight	MP C4502/C5502: < 287 lb. (130 kg) w/ARDF MP C4502A/C5502A: < 293 lb. (133 kg) w/SPDF
Power Requirements	120V - 127V, 60Hz
Power Consumption	1,584W or less
TEC Value	MP C4502: 2151Wh MP C5502: 2719Wh MP C4502A: 2150Wh MP C5502A: 2749Wh

Printer Specifications (Standard)

CPU	Intel Celeron-M @ 1.0 GHz, Embedded
Memory	2 GB RAM Standard/Maximum; 190 GB Hard Disk Drive (with DOSS/Encryption)
Print Drivers	Standard: PCL 5c, PCL 6 (XL), XPS via download Optional: Postscript 3
Font Support	Standard: PCL: 45 Scalable Optional: PostScript 3: 136 Roman fonts
Max. Print Resolution	1200 x 1200 dpi
Network Interfaces	Standard: 10BaseT/100Base-TX Ethernet (RJ-45), USB 2.0 Host Interface, USB 2.0 for direct PC/Mac connection, Front USB 2.0/SD Card Slot Interface Optional: Gigabit Ethernet (1000Base-T) IEEE 802.11a/b/g Wireless Interface IEEE 1284/ECP Parallel Interface, Bluetooth TCP/IP (IPv4, IPv6), IPX/SPX*
Network Protocol Support	Windows XP/Vista/7/Server 2003/Server 2008/Server 2008R2, Mac OS X 10.2 or later, Novell NetWare 6.5*, Sun Solaris, HP-UX, SCO OpenServer, RedHat Linux, and IBM AIX, SAP R/3

Utilities Web SmartDeviceMonitor, @Remote

*Network option is required

Scanner Specifications (Standard)

Scanner Resolution	BW and FC scanning at 100 - 600 dpi, Up to 1200 dpi for TWAIN scanning Default Scan Resolution: 200 dpi
Scanning Speed (Letter-size)	MP C4502/C5502: 300 dpi: 67 ipm BW/FC MP C4502A/C5502A: 300 dpi: 85 ipm BW/FC Simplex/110 ipm BW/FC Duplex
Scan Area	Main Scan: 11.7" (297 mm) Sub Scan: 17" (432 mm)
Supported File Formats	Single/Multi-Page TIFF, Single Page JPEG, Single/Multi-Page PDF, Single/Multi-Page PDF/A High Compression PDF
Scan Modes	Scan-to-Email (with LDAP support) Scan-to-Folder (SMB/FTP/NCP) Scan-to-URL Scan-to-Media (USB/SD Card) Network TWAIN Scanning

Document Server Specifications (Standard)

Max. Stored Documents	3,000 documents
Max. Page Capacity	9,000 pages

Facsimile Specifications (Optional)

Type	Fax Option Type C5502: Super G3
Resolution	200 x 100 dpi, 200 x 200 dpi, 400 x 400 dpi (with optional SAF memory)
Modem Speed	33.6K - 2,400 bps w/Auto fallback
Compression Method	MH, MR, MMR, JBIG
Auto Dialing	2,000 Quick/Speed Dial numbers; 100 Group Dial numbers Standard: 4 MB (approx. 320 pages), Optional: 28 MB (approx. 2,240 pages) with optional SAF memory
Memory Capacity (SAF)	Internet Fax by E-mail (T.37); IP Fax (T.38); LAN Fax; Fax Forward to E-mail/Folder; LDAP Support
Additional Modes	Additional G3 Lines (up to 2); Fax SAF Memory; Telephone Handset, Fax Connection Unit
Options	

Security Features (Optional)

Copy Data Security, DataOverwriteSecurity System (DOSS) with ISO 15408 Common Criteria Certification

Hardware Accessories

Paper Handling Options

Two-Tray Paper Bank (PB3130)¹	
Tray Capacity	1,100 sheets (550 sheets x 2 trays)
Paper Size	5.8" x 8.3" to 11" x 17" (A5 - A3)
Paper Weight	14 - 68 lb. Bond/140 lb. Index (52 - 256 g/m ²)
Dimensions (WxDxH)	22.8" x 24.4" x 10.2" (580 x 620 x 260 mm)

Tandem Large Capacity Tray (PB3140)¹

Tray Capacity	2,000 sheets (1,000 sheets x 2)
Paper Size	8.5" x 11" (A4)
Paper Weight	14 - 68 lb. Bond/140 lb. Index (52 - 256 g/m ²)
Dimensions (WxDxH)	22.8" x 24.4" x 10.2" (580 x 620 x 260 mm)

Side Large Capacity Tray (RT3020)

Tray Capacity	1,200 sheets
Paper Size	8.5" x 11" (A4)
Paper Weight	16 - 57.5 lb. Bond/120 lb. Index (60 - 216 g/m ²)
Dimensions (WxDxH)	21.3" x 15.1" x 11.4" (540 x 384 x 290 mm)
Requires Two-Tray Paper Bank (PB3130) or Tandem LCT (PB3140)	

Finisher Options

1,000-Sheet Finisher (SR3090)²	
Paper Size	Proof Tray: 5.5" x 8.5" to 12" x 18" (A6 - A3) Shift Tray: 5.5" x 8.5" to 12" x 18"
Paper Weight	Proof Tray: 14 - 69 lb. Bond/140 lb. Index (52 - 260 g/m ²) Shift Tray: 14 - 43 lb. Bond/90 lb. Index (52 - 163 g/m ²)
Stack Capacity	Proof Tray: 250 sheets (8.5" x 11") or smaller 50 sheets (8.5" x 14" or larger) Shift Tray: 1,000 sheets (8.5" x 11") or smaller 500 sheets (8.5" x 14" or larger)

Staple Capacity	50 sheets (8.5" x 11") 30 sheets (8.5" x 14" or larger)
Staple Paper Sizes	8.5" x 11" to 12" x 18"
Staple Paper Weight	17 - 24 lb. Bond (64 - 90 g/m ²)
Staple Positions	1 staple: 2 positions; 2 staples: 1 position
Dimensions (WxDxH)	10.7" x 20.5" x 31.2" (270 x 520 x 790 mm)

2,000-Sheet Booklet Finisher (SR3110)¹

Paper Size	Proof Tray: 5.5" x 8.5" to 12" x 18" (A6 - A3) Shift Tray: 5.5" x 8.5" to 12" x 18" Booklet Tray: 8.5" x 11", 8.5" x 14", 11" x 17"
Paper Weight	Proof Tray: 14 - 43 lb. Bond/90 lb. Index (52 - 163 g/m ²) Shift Tray: 14 - 68 lb. Bond/140 lb. Index (52 - 256 g/m ²) Booklet Tray: 17 - 24 lb. Bond (64 - 90 g/m ²)
Stack Capacity	Proof Tray: 250 sheets (8.5" x 11" or smaller) 50 sheets (8.5" x 14" or larger) Shift Tray: 2,000 sheets (8.5" x 11" or smaller) 1,000 sheets (8.5" x 14" or larger) 500 sheets (5.5" x 8.5") Booklet Tray: 30 sets (2 - 5 sheets/set, all sizes, saddle-stitched) or 15 sets (6 - 10 sheets/set, all sizes, saddle-stitched) or 10 sets (11 - 15 sheets/set, all sizes, saddle-stitched)
Staple Capacity	Normal Staple: 50 sheets (8.5" x 11") 30 sheets (8.5" x 14" or larger and/or Mixed Sizes) Saddle Stitch: 15 sheets (up to 60-page booklets)
Staple Paper Size	Normal Staple: 8.5" x 11" to 11" x 17" Saddle Stitch: 8.5" x 11" to 11" x 17"
Staple Paper Weight	17 - 24 lb. Bond (64 - 90 g/m ²)
Staple Positions	1 staple: 3 positions; 2 staples: 2 positions
2-/3-Hole Punch Unit	Optional; Installs inside Booklet Finisher Punch Paper Sizes: 5.5" x 8.5" to 11" x 17"
Dimensions (WxDxH)	25.9" x 25.1" x 37.8" (657 x 613 x 960 mm)

3,000-Sheet Finisher (SR3120)¹

Paper Size	Proof Tray: 5.5" x 8.5" to 12" x 18" (A6 - A3) Shift Tray: 5.5" x 8.5" to 12" x 18"
Paper Weight	Proof Tray: 14 - 43 lb. Bond/90 lb. Index (52 - 163 g/m ²) Shift Tray: 14 - 68 lb. Bond/140 lb. Index (52 - 256 g/m ²)
Stack Capacity	Proof Tray: 250 sheets (8.5" x 11" or smaller) 50 sheets (8.5" x 14" or larger) Shift Tray: 3,000 sheets (8.5" x 11") 1,500 sheets (8.5" x 14" or larger) 500 sheets (5.5" x 8.5")
Staple Capacity	50 sheets (8.5" x 11") 30 sheets (8.5" x 14" or larger and/or Mixed Sizes)
Staple Paper Size	8.5" x 11" to 11" x 17"
Staple Paper Weight	17 - 24 lb. Bond (64 - 90 g/m ²)
Staple Positions	1 staple: 3 positions; 2 staples: 1 position
2-/3-Hole Punch Unit	Optional; Installs inside Finisher Punch Paper Sizes: 5.5" x 8.5" to 11" x 17"
Dimensions (WxDxH)	25.9" x 25.1" x 37.8" (657 x 613 x 960 mm)

Additional Accessories

FAC52 Cabinet, Envelope Feeder Tray, Side Tray, Internal Sort Shift Tray, One Bin Tray, File Format Converter, Key Counter Bracket, Card Reader Bracket, Bridge Unit, Scanner Accessibility, SD Card for Network, Browser Unit, Platen Cover, Counter Interface, Camera Direct Print Card, ADF Handle, IPDS Unit, HotSpot Printing Kit, Fiery[™] Print Controller

Consumables

Item	Yield
Black Toner	31,000 pages
Cyan Toner	22,500 pages
Magenta Toner	22,500 pages
Yellow Toner	22,500 pages

¹Either the Cabinet Stand or one of the paper bank options must be installed.

²Requires configuration with Bridge Unit.

³Not available on MP C4502A/C5502A.

www.savin.com

Savin, Five Dedrick Place, West Caldwell, NJ 07006

Savin[™] and the Savin Logo are registered trademarks of Ricoh Company, Ltd. All other trademarks are the property of their respective owners. The content of this document, and the appearance, features and specifications of Savin products and services are subject to change from time to time without notice. Products are shown with optional features. While care has been taken to ensure the accuracy of this information, Savin makes no representation or warranties about the accuracy, completeness or adequacy of the information contained herein, and shall not be liable for any errors or omissions in these materials. Actual results will vary depending upon use of the products and services, and the conditions and factors affecting performance. The only warranties for Savin products and services are as set forth in the express warranty statements accompanying them.

S3325

