

SAVIN®

Pro C550EX/C700EX Color Digital Imaging System

SPEED >

QUALITY >

FLEXIBILITY >

POWER >

CONTROL >



**Increase productivity and
profitability for full-color jobs.**

Optional Cover Interposers

Feed pre-printed sheets from one or two sources for front and back covers.

Optional Z-Fold Unit

Insert larger sheets within smaller-format documents.

Optional 3,000-Sheet Finishers

Choose from 50- or 100-sheet stapling and 2- or 3-hole punching.

Optional 2,000-Sheet Booklet Finisher

Fold and staple documents to produce finished booklets.

Tandem 2 x 1,100-Sheet Paper Tray, Two 550-Sheet Paper Trays and Bypass

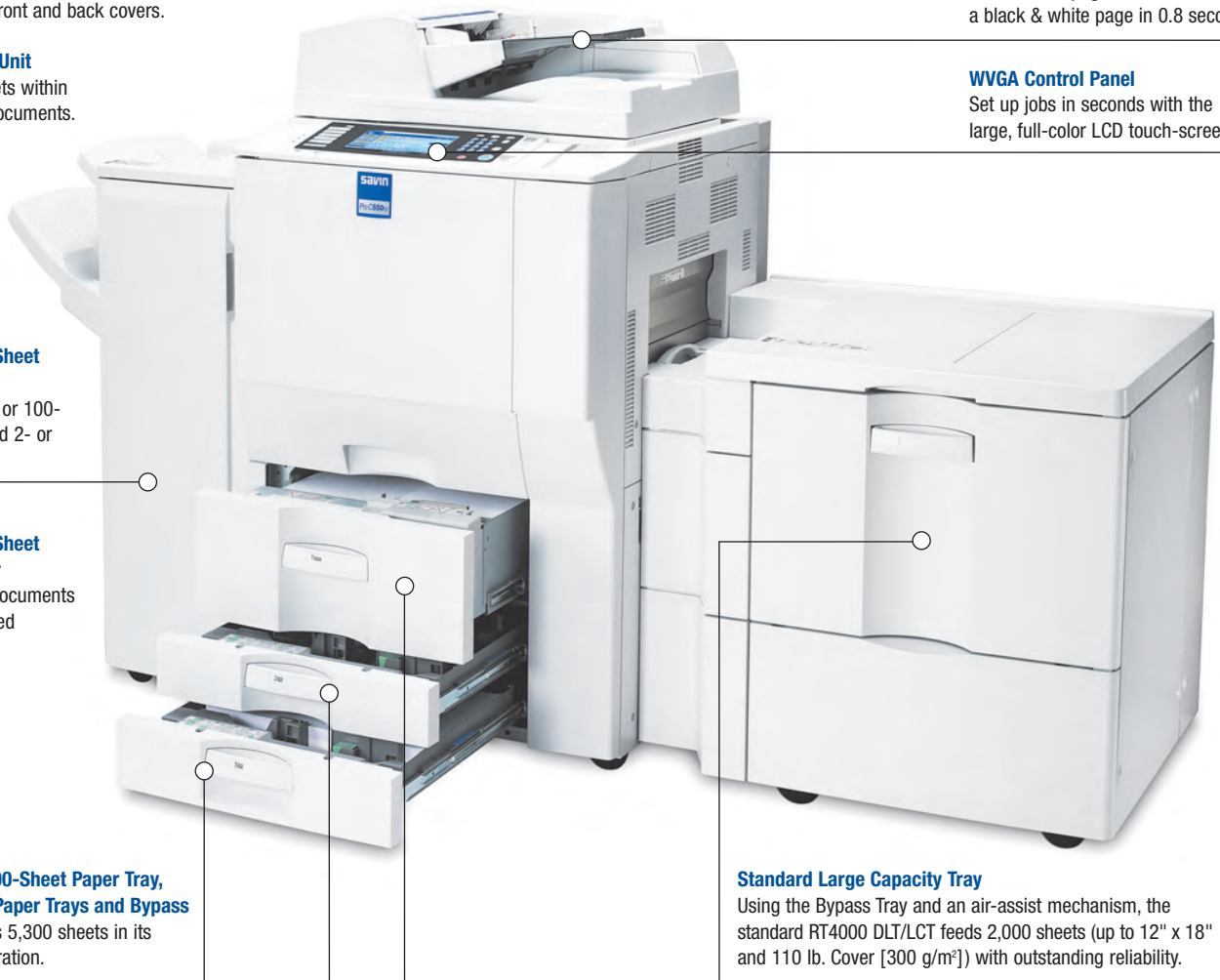
The system holds 5,300 sheets in its standard configuration.

100-Sheet Automatic Reversing Document Feeder (ARDF)

Scan a color page in 1.0 seconds or a black & white page in 0.8 seconds.

WVGA Control Panel

Set up jobs in seconds with the large, full-color LCD touch-screen.



Standard Large Capacity Tray

Using the Bypass Tray and an air-assist mechanism, the standard RT4000 DLT/LCT feeds 2,000 sheets (up to 12" x 18" and 110 lb. Cover [300 g/m²]) with outstanding reliability.

GBC StreamPunch III



Use the GBC StreamPunch III to produce clean, precisely punched documents in a range of styles.

BK5010 Production Booklet Maker



Create saddle-stitch square fold booklets up to 120 pages.

Ring Binder RB5000



In-Line Ring Binding — with the new Ring Binder RB5000 — eliminates the time and expense of inserting binding elements off-line, dramatically saving time and labor.



Build your business with high-speed color.

Designed to help all kinds of production environments grow revenue and strengthen profitability, the SAVIN® Pro C550EX/C700EX color digital imaging system delivers outstanding speed, reliability and flexibility, as well as a powerful EFI Fiery® E-8100 Print Server for high-quality color with precise control. Add this fast, dependable system to increase productivity and take on a wider variety of jobs, so you can keep every customer coming back for more.



Find the features you need in seconds with the intuitive LCD touch-screen.

Accelerate Productivity

Outpace your competition and turn important jobs around quickly with exceptional speed for full-color and black & white output.

- Make quick work of any job with the Pro C550EX, which delivers 55 color or 60 black & white pages per minute (ppm), or the Pro C700EX, which achieves speeds of 70 color or 75 black & white ppm. Duplexing runs at 100% of rated speed.
- Reduce wait-time between jobs. The multitasking E-8100 enables you to print one job while simultaneously RIPing a second. Its standard 2.13 GHz processor and 2GB memory help ensure fast performance, even for complex, color-intense files.
- Hit deadlines every time, especially rush orders. Together, the SAVIN Pro C700EX and the E-8100 form the fastest color output combination in this segment.
- Ensure smooth operation with the large, full-color WVGA control panel, which offers an intuitive menu that makes it easy for any user to find the right settings.
- Minimize interruptions by maximizing paper input capacity. The systems hold up to 5,300 sheets to support extended runs.

Maximize Color Control

The high-performance E-8100 provides the extra horsepower you need to ensure consistency, control workflow and deliver vivid full-color output.

- Understand complex jobs at a glance with a new user interface. Simple, easy-to-follow menus allow anyone to navigate sophisticated imposition settings.
- Manage workflow from a single PC with the Command WorkStation® utility, which enables you to rearrange job queues and edit multiple jobs on the fly.
- Maximize efficiency and speed with extensive job management features, including Rush Print, Process Next, Print Next and Paper Catalog.
- Ensure optimal color quality with the optional Fiery Graphic Arts Package Premium Edition, which allows you to optimize screen settings, simulate dithering patterns and perform manual or automatic trapping.

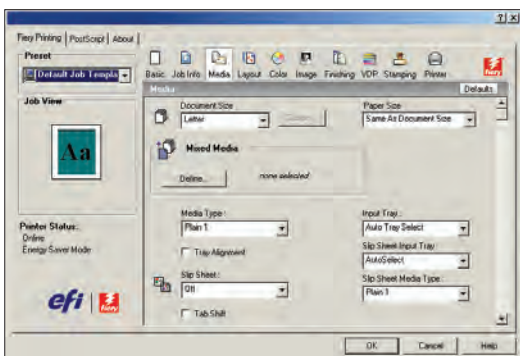
- Prepare jobs rapidly with optional EFI Impose. This utility enables users to choose imposition settings, selecting gang-up style, gutter size and binding method.
- Reduce errors and reprints with the optional EFI Compose utility, which lets you preview and edit pre-processed jobs prior to final output.
- Increase color accuracy across many different platforms, applications and media types with Fiery Spot-On utility.
- Accelerate processing with Hot Folders, which allow users to drag a job into a folder and automatically apply a pre-determined configuration of job settings.
- Create customized marketing and promotions with optional support for a variety of variable data printing techniques.

Optimize Image Quality

In addition to its state-of-the-art controller, the SAVIN Pro C550EX/C700EX includes several features that help ensure excellent image quality.

- Sharpen every image with new PxP toner technology. Smaller toner particles ensure smooth, even distribution, which enhances edge definition, coverage and density while improving color matching.
- Parallel calibration ensures consistent color quality over long job runs.
- Remove trace indentations that can occur after fusing. The system incorporates a smaller, more precise mechanism for moving paper in and out of the fuser unit.

E-8100 Interface



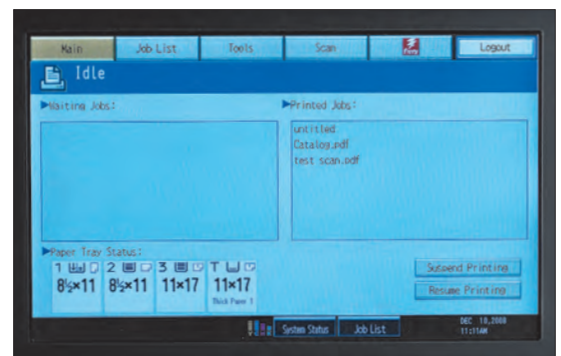
The easy-to-use, icon-driven Fiery interface can be arranged to display the most commonly used features and settings.

Fiery® E-8100



The fast, powerful Fiery E-8100 Print Server ensures optimal full-color output.

Touch Panel Display



The integrated touch-panel display puts all Fiery features and functions at your fingertips.

Pro C550EX/C700EX Color Digital Imaging System

SPEED > QUALITY > FLEXIBILITY > POWER > CONTROL >

Variable Data Printing



Meet customer requests for on-demand printing and other one-to-one marketing tools with extensive variable data printing support.

Finishing and Media Flexibility

Configure the system with one or more in-line finishing options and run a diverse array of media to meet your customers' most pressing needs.

- Handle a very wide range of stock. The paper trays accommodate weights up to 80 lb. Cover and will duplex up to 90 lb. Index.
- Run longer jobs on more sizes with the standard Large Capacity Tray. It accepts sizes up to 12" x 18" and weights up to 110 lb. Cover, and holds up to 2,000 sheets.
- Produce booklets up to 60 pages (15 sheets) with the optional SR4020 Booklet Maker.
- Insert maps, drawings, plans and other large documents in smaller-format documents with the Z-Fold Unit.

Smooth, Easy Operation

Light production environments need to move quickly, with no room for error. This system ensures simple, convenient operation at all times.

- Locate E-8100 features immediately by pressing the Fiery Driven key located on the system's control panel.
- Never say no to your customers. Take advantage of a comprehensive lineup of copying, scanning, faxing and storage capabilities to handle virtually any task.
- Place the system anywhere in the shop — especially in locations where floor space is at a premium — with its small footprint.

The Total Green Solution

Savin continues its long-standing commitment to developing solutions with environmentally friendly and superior energy- and supply-saving features, without compromising productivity.



Our earth,
Our tomorrow

COPIER SPECIFICATIONS

Configuration	Console
Scanning Element	Flatbed with moving 3-line CCD array image-scanning
Toner	PxP Chemical toner
System Memory	320GB (160GB x 2)
Document Feeder	Standard 100-Sheet ARDF
Copy Resolution	600 x 600 dpi
Color	256 Levels
Image Density	Manual & Automatic
Quantity Indicator	1 - 9,999
Original Type	Sheet/Book/Object
Original Size	Up to 11" x 17"
Warm-Up Time	Pro C550EX less than 90 sec. Pro C700EX less than 75 sec.
First-Copy Out Time	Pro C550EX 5.7/7.5 sec. (BW/FC) Pro C700EX 4.9/6.4 sec. (BW/FC) Pro C550EX 60/55 cpm (BW/FC) Pro C700EX 75/70 cpm (BW/FC)
Speed	
Standard Paper Capacity	1st Tray 1,100 x 2 550 Sheets x 2nd & 3rd Trays, 2,000-Sheet RT4000
Paper Size	5,300 Sheet std. max capacity
Paper Weight	5.5" x 8.5" to 12" x 18" 14 lb. Bond - 80 lb. Cover (std. Trays) 17 lb. Bond - 90 lb. Index (Duplex) 14 lb. Bond - 110 lb. Cover (LCT)
Magnification	7 reduction and 5 enlargement
Zoom	25% to 400% in 1% increments
Power Source	C550EX/120V/20A/60Hz C700EX/208-240V/12A/60Hz
Dimensions (WxDxH)	29.5" x 33.5" x 43.1" (excluding ARDF)
Weight	656.9 lb.

COLOR CONTROLLER E-8100

Controller Type	Server type
CPU	Intel Core 2 Duo 2.13GHz
Host Interface	1000/100/10Base-T
Memory	2GB
Internal HDD	160GB
DVD/CD-RW Drive	DVD Drive Available
Operating System	XPe
Network Protocol	TCP/IP(IPv4/IPv6), AppleTalk (Auto Switching), SMB, Bonjour
Printer Description	Adobe PostScript 3 (Standard)
Languages	PCL5c, PCL6 (Standard)
Print Resolution	600 dpi
Scan Resolution	Max. 600 dpi
Fonts	PS3: 136 fonts PCL: 80 scalable fonts
Operation Panel	Pro C550EX/C700EX operation panel is commonly used for printer/scanner function as "Fiery Menu"
Controller LED	Power LED
User Interface LCD	LED and 7 buttons for UIB (User Interface board) available on the upper area of E-8100

Fiery Scan	Scan To: E-mail, Mailbox, Hold Queue, FTP, Internet Fax, SMB, Local HDD
Utility (Standard)	CommandWorkStation (Windows Edition) CommandWorkStation (Macintosh Edition) ColorWise Pro Tools (Spot-on) Fiery Scan (Twain plug-in, Remote Scan) Printer Delete Utility Fiery Web Tools Auto-Trapping/Hot Folders/Spot-on Paper Catalog Fiery Graphic Arts Package Premium Edition FACI Kit/FACI Furniture EFI Impose EFI Compose EFI Server HDD Security EFI Server Kit Option (UV version) Color Profiler Suite (UV version)
Options	ICC Profile, (newest ICC profile ICV4 is supported) Color Chart, CMYK Color Reference Pages, RGB Color Tests, Trapping Support, ColorWise Pro Tools ColorCal, Densitometer, Spectrophotometer
Color Management Tools	
Calibration	

ACCESSORIES

RT4000 DLT/LCT (Standard)	
Paper Capacity	2,000 Sheets
Paper Size	Up to 12" x 18"
Paper Weight	14 lb. - 110 lb. Cover
Size	38.1" x 28" x 29.3"
Weight	192 lbs.
CS391 9-Bin Mailbox	
Number of Bins	9
Stack Capacity of Bins	100 Sheets
Paper Size	5.5" x 8.5" - 11" x 17"
Paper Weight	14 lb. - 34 lb. Bond
Size	21" x 24" x 26"
Weight	33 lbs.
Z-Fold Unit	
Paper Size	8.5" x 11" and 11" x 17"
Paper Weight	17 lb. - 20 lb. Bond
Size	7" x 24" x 38"
Weight	121 lbs.
2 Source Cover Interposer	
Paper Size	5.5" x 8.5" - 12" x 18"
Paper Weight	17 lb. Bond - 110 lb. Index
Size	28" x 29" x 50"
Weight	99 lbs.

SR5000 100-Sheet Staple Finisher**	
Paper Size	5.5" x 8.5" - 12" x 18"
Capacity (Shift Tray)	8.5" x 11" - 3,000 Sheets
Paper Weight	14 lb. Bond - 110 lb. Cover
Staple	8.5" x 11" - 100 Sheets 8.5" x 14" - 11" x 17" - 50 Sheets 31" x 29" x 39"
Size	31" x 29" x 39"
Weight	165 lbs.

**SR5000 must include Finisher Adapter Type C.

SR4010 50-Sheet Staple Finisher	
Paper Size	5.5" x 8.5" - 12" x 18"
Capacity (Shift Tray)	8.5" x 11" - 3,000 Sheets
Paper Weight	14 lb. Bond - 110 lb. Cover
Staple	8.5" x 11" - 50 Sheets 8.5" x 14" - 11" x 17" - 30 Sheets
Size	26" x 24" x 38"
Weight	119 lbs.

SR4020 Booklet Maker	
Paper Size	5.5" x 8.5" - 12" x 18"
Capacity (Shift Tray)	8.5" x 11" - 2,000 Sheets
Paper Weight	14 lb. Bond - 110 lb. Cover
Staple	8.5" x 11" - 50 Sheets 8.5" x 14" - 11" x 17" - 30 Sheets
Saddle Stitch Staple***	8.5" x 11" - 12" x 18" - 15 Sheets
Size	26" x 24" x 38"
Weight	139 lbs.

***Paper weight for saddle stitch stapling is 28 lb. Bond max.

Ring Binder RB5000	
Paper Sizes Supported	8.5" x 11" (long edge feed only)
Maximum Binding Capacity	100 sheets/booklet

GBC StreamPunch III	
Paper Sizes Supported	8.5" x 11" (long edge feed only)
Die Sets Supported	7 customer replaceable die sets

BK5010 Production Booklet Maker	
Paper Sizes Supported	Width: 8.1" x 12.6" Length: 10.8" x 18"
Maximum Booklet Size	30 sheets or 120 pages (based on 20 lb. Bond)

ADDITIONAL ACCESSORIES

Punch Unit for SR5000
Punch Unit for SR4010/4020
Jogger Option for 4010/4020
11 x 17 Tray Type 2105
Copy Connector Kit Type 3260
Tab Sheet Unit Type 3260
Java VM Card Type F
Hard Drive Encryption Unit Type A
DataOverwriteSecuritySystem (DOSS) Unit
Cover Interposer Type 3260
Copy Tray Type 2075
Key Counter Bracket Type 1027
Optional Counter Interface Unit Type 1

www.savin.com

Bringing Savin Value to Your Organization

Savin technology offers a diverse portfolio of solutions to help your organization stay competitive and move ahead. Let Savin show you how to empower your business to improve critical processes, keep information secure, ensure compliance and promote environmental sustainability while reducing the total cost of ownership.

Savin Five Dedrick Place, West Caldwell, NJ 07006
SAVIN® is a registered trademark of Ricoh Americas Corporation. All other trademarks are the property of their respective owners. Print speed may be affected by network, application or PC performance. Specifications and external appearances are subject to change without notice. Products are shown with optional features.

S3018-1



Mixed Sources
Product group from well-managed forests, controlled sources and recycled wood or fiber
Cert no. SGS-COC-2807
www.fsc.org
© 1996 Forest Stewardship Council

